

Activity ID	Activity Name	Duration	Start	Finish	Total Float	2020		2021				2022				2023			
						Q3	Q4	Q1	Q2	Q3	Q4	Q1	Q2	Q3	Q4	Q1	Q2		
US183 North Improvements - Goliad County (Revision-3)						463	06-Jul-20	10-Nov-22											0
0-010	NTP	0	06-Jul-20		0														
0-020	Mobilization	5	06-Jul-20	13-Jul-20	0														
0-030	Project Completion	0		10-Nov-22	0														
Phase 1- Cross Drainage Structures						112	15-Jul-20	12-Feb-21											21
Northbound Side (A,B,C,D,E)						8	15-Jul-20	27-Jul-20											21
Culvert Crossing A						4	15-Jul-20	20-Jul-20											25
1N-010	Set Up Channelizing Devices and TCP	1	15-Jul-20	15-Jul-20	25														
1N-020	Set Up SW3P	1	15-Jul-20	15-Jul-20	25														
1N-030	Remove MBGF	1	16-Jul-20	16-Jul-20	25														
1N-040	Install MBGF	2	17-Jul-20	20-Jul-20	25														
Culvert Crossing B						8	15-Jul-20	27-Jul-20											21
1N-050	Set Up Channelizing Devices and TCP	1	15-Jul-20	15-Jul-20	21														
1N-060	Set Up SW3P	1	15-Jul-20	15-Jul-20	21														
1N-070	Remove Existing End Treatments	1	16-Jul-20	16-Jul-20	21														
1N-075	Construct Culvert Extension	4	17-Jul-20	23-Jul-20	21														
1N-080	Install Proposed End Treatments	2	24-Jul-20	27-Jul-20	21														
Culvert Crossing C						4	15-Jul-20	20-Jul-20											25
1N-090	Set Up Channelizing Devices and TCP	1	15-Jul-20	15-Jul-20	25														
1N-100	Set Up SW3P	1	15-Jul-20	15-Jul-20	25														
1N-110	Remove MBGF	1	16-Jul-20	16-Jul-20	25														
1N-120	Install MBGF	2	17-Jul-20	20-Jul-20	25														
Culvert Crossing D						4	15-Jul-20	20-Jul-20											25
1N-130	Set Up Channelizing Devices and TCP	1	15-Jul-20	15-Jul-20	25														
1N-140	Set Up SW3P	1	15-Jul-20	15-Jul-20	25														
1N-150	Remove Existing End Treatments	1	16-Jul-20	16-Jul-20	25														
1N-160	Install Proposed End Treatments	2	17-Jul-20	20-Jul-20	25														
Culvert Crossing E						4	15-Jul-20	20-Jul-20											25
1N-170	Set Up Channelizing Devices and TCP	1	15-Jul-20	15-Jul-20	25														
1N-180	Set Up SW3P	1	15-Jul-20	15-Jul-20	25														
1N-190	Remove Existing End Treatments	1	16-Jul-20	16-Jul-20	25														
1N-200	Install Proposed End Treatments	2	17-Jul-20	20-Jul-20	25														
Southbound Side (A,B,C,D,E)						8	28-Jul-20	10-Aug-20											21
Culvert Crossing A						4	28-Jul-20	03-Aug-20											25
1S-010	Set Up Channelizing Devices and TCP	1	28-Jul-20	28-Jul-20	25														
1S-020	Set Up SW3P	1	28-Jul-20	28-Jul-20	25														
1S-030	Remove MBGF	1	29-Jul-20	29-Jul-20	25														
1S-040	Install MBGF	2	31-Jul-20	03-Aug-20	25														
Culvert Crossing B						8	28-Jul-20	10-Aug-20											21
1S-050	Set Up Channelizing Devices and TCP	1	28-Jul-20	28-Jul-20	21														
1S-060	Set Up SW3P	1	28-Jul-20	28-Jul-20	21														
1S-070	Remove Existing End Treatments	1	29-Jul-20	29-Jul-20	21														
1S-075	Construct Culvert Extension	4	31-Jul-20	05-Aug-20	21														
1S-080	Install Proposed End Treatments	2	07-Aug-20	10-Aug-20	21														

█ Actual Work ◆ Milestone
█ Remaining Work ◀ Summary
█ Critical Remaining Work

Activity ID	Activity Name	Duration	Start	Finish	Total Float	2020				2021				2022				2023					
						Q3	Q4	Q1	Q2	Q3	Q4	Q1	Q2	Q3	Q4	Q1	Q2						
Culvert Crossing C						4	28-Jul-20	03-Aug-20	25														
1S-090	Set Up Channelizing Devices and TCP	1	28-Jul-20	28-Jul-20	25																		
1S-100	Set Up SW3P	1	28-Jul-20	28-Jul-20	25																		
1S-110	Remove MBGF	1	29-Jul-20	29-Jul-20	25																		
1S-120	Install MBGF	2	31-Jul-20	03-Aug-20	25																		
Culvert Crossing D						4	28-Jul-20	03-Aug-20	25														
1S-130	Set Up Channelizing Devices and TCP	1	28-Jul-20	28-Jul-20	25																		
1S-140	Set Up SW3P	1	28-Jul-20	28-Jul-20	25																		
1S-150	Remove Existing End Treatments	1	29-Jul-20	29-Jul-20	25																		
1S-160	Install Proposed End Treatments	2	31-Jul-20	03-Aug-20	25																		
Culvert Crossing E						4	28-Jul-20	03-Aug-20	25														
1S-170	Set Up Channelizing Devices and TCP	1	28-Jul-20	28-Jul-20	25																		
1S-180	Set Up SW3P	1	28-Jul-20	28-Jul-20	25																		
1S-190	Remove Existing End Treatments	1	29-Jul-20	29-Jul-20	25																		
1S-200	Install Proposed End Treatments	2	31-Jul-20	03-Aug-20	25																		
Northbound Side (F,G,H,I,J)						8	11-Aug-20	24-Aug-20	21														
Culvert Crossing F						4	11-Aug-20	17-Aug-20	25														
1N-210	Set Up Channelizing Devices and TCP	1	11-Aug-20	11-Aug-20	25																		
1N-220	Set Up SW3P	1	11-Aug-20	11-Aug-20	25																		
1N-230	Remove Existing End Treatments	1	12-Aug-20	12-Aug-20	25																		
1N-240	Install Proposed End Treatments	2	14-Aug-20	17-Aug-20	25																		
Culvert Crossing G						4	11-Aug-20	17-Aug-20	25														
1N-250	Set Up Channelizing Devices and TCP	1	11-Aug-20	11-Aug-20	25																		
1N-260	Set Up SW3P	1	11-Aug-20	11-Aug-20	25																		
1N-270	Remove Existing End Treatments	1	12-Aug-20	12-Aug-20	25																		
1N-280	Install Proposed End Treatments	2	14-Aug-20	17-Aug-20	25																		
Culvert Crossing H						4	11-Aug-20	17-Aug-20	25														
1N-290	Set Up Channelizing Devices and TCP	1	11-Aug-20	11-Aug-20	25																		
1N-300	Set Up SW3P	1	11-Aug-20	11-Aug-20	25																		
1N-310	Remove Existing End Treatments	1	12-Aug-20	12-Aug-20	25																		
1N-320	Install Proposed End Treatments	2	14-Aug-20	17-Aug-20	25																		
Culvert Crossing I						4	11-Aug-20	17-Aug-20	25														
1N-330	Set Up Channelizing Devices and TCP	1	11-Aug-20	11-Aug-20	25																		
1N-340	Set Up SW3P	1	11-Aug-20	11-Aug-20	25																		
1N-350	Remove MBGF	1	12-Aug-20	12-Aug-20	25																		
1N-360	Install MBGF	2	14-Aug-20	17-Aug-20	25																		
Culvert Crossing J						8	11-Aug-20	24-Aug-20	21														
1N-370	Set Up Channelizing Devices and TCP	1	11-Aug-20	11-Aug-20	21																		
1N-380	Set Up SW3P	1	11-Aug-20	11-Aug-20	21																		
1N-390	Remove Existing End Treatments	1	12-Aug-20	12-Aug-20	21																		
1N-395	Construct Culvert Extensions	4	14-Aug-20	20-Aug-20	21																		
1N-400	Install Proposed End Treatments	2	21-Aug-20	24-Aug-20	21																		
Southbound Side (F,G,H,I,J)						8	25-Aug-20	08-Sep-20	21														
Culvert Crossing F						4	25-Aug-20	31-Aug-20	25														
1S-210	Set Up Channelizing Devices and TCP	1	25-Aug-20	25-Aug-20	25																		

█ Actual Work ◆ Milestone
█ Remaining Work ◀ Summary
█ Critical Remaining Work

Project Duration: 29 months
 Standard Workweek. Average 17 work days per month

Activity ID	Activity Name	Duration	Start	Finish	Total Float	2020				2021				2022				2023	
						Q3	Q4	Q1	Q2	Q3	Q4	Q1	Q2	Q3	Q4	Q1	Q2		
1S-220	Set Up SW3P	1	25-Aug-20	25-Aug-20	25														
1S-230	Remove Existing End Treatments	1	27-Aug-20	27-Aug-20	25														
1S-240	Install Proposed End Treatments	2	28-Aug-20	31-Aug-20	25														
Culvert Crossing G		4	25-Aug-20	31-Aug-20	25														
1S-250	Set Up Channelizing Devices and TCP	1	25-Aug-20	25-Aug-20	25														
1S-260	Set Up SW3P	1	25-Aug-20	25-Aug-20	25														
1S-270	Remove Existing End Treatments	1	27-Aug-20	27-Aug-20	25														
1S-280	Install Proposed End Treatments	2	28-Aug-20	31-Aug-20	25														
Culvert Crossing H		4	25-Aug-20	31-Aug-20	25														
1S-290	Set Up Channelizing Devices and TCP	1	25-Aug-20	25-Aug-20	25														
1S-300	Set Up SW3P	1	25-Aug-20	25-Aug-20	25														
1S-310	Remove Existing End Treatments	1	27-Aug-20	27-Aug-20	25														
1S-320	Install Proposed End Treatments	2	28-Aug-20	31-Aug-20	25														
Culvert Crossing I		4	25-Aug-20	31-Aug-20	25														
1S-330	Set Up Channelizing Devices and TCP	1	25-Aug-20	25-Aug-20	25														
1S-340	Set Up SW3P	1	25-Aug-20	25-Aug-20	25														
1S-350	Remove MBGF	1	27-Aug-20	27-Aug-20	25														
1S-360	Install MBGF	2	28-Aug-20	31-Aug-20	25														
Culvert Crossing J		8	25-Aug-20	08-Sep-20	21														
1S-370	Set Up Channelizing Devices and TCP	1	25-Aug-20	25-Aug-20	21														
1S-380	Set Up SW3P	1	25-Aug-20	25-Aug-20	21														
1S-390	Remove Existing End Treatments	1	27-Aug-20	27-Aug-20	21														
1S-395	Construct Culvert Extensions	4	28-Aug-20	02-Sep-20	21														
1S-400	Install Proposed End Treatments	2	03-Sep-20	08-Sep-20	21														
Northbound Side (K,L,M,N,O)		8	09-Sep-20	21-Sep-20	21														
Culvert Crossing K		8	09-Sep-20	21-Sep-20	21														
1N-410	Set Up Channelizing Devices and TCP	1	09-Sep-20	09-Sep-20	21														
1N-420	Set Up SW3P	1	09-Sep-20	09-Sep-20	21														
1N-430	Remove Existing End Treatments	1	10-Sep-20	10-Sep-20	21														
1N-435	Construct Culvert Extensions	4	11-Sep-20	17-Sep-20	21														
1N-440	Install Proposed End Treatments	2	18-Sep-20	21-Sep-20	21														
Culvert Crossing L		4	09-Sep-20	14-Sep-20	25														
1N-450	Set Up Channelizing Devices and TCP	1	09-Sep-20	09-Sep-20	25														
1N-460	Set Up SW3P	1	09-Sep-20	09-Sep-20	25														
1N-470	Remove Existing End Treatments	1	10-Sep-20	10-Sep-20	25														
1N-480	Install Proposed End Treatments	2	11-Sep-20	14-Sep-20	25														
Culvert Crossing M		4	09-Sep-20	14-Sep-20	25														
1N-490	Set Up Channelizing Devices and TCP	1	09-Sep-20	09-Sep-20	25														
1N-500	Set Up SW3P	1	09-Sep-20	09-Sep-20	25														
1N-510	Remove MBGF	1	10-Sep-20	10-Sep-20	25														
1N-520	Install MBGF	2	11-Sep-20	14-Sep-20	25														
Culvert Crossing N		4	09-Sep-20	14-Sep-20	25														
1N-530	Set Up Channelizing Devices and TCP	1	09-Sep-20	09-Sep-20	25														
1N-535	Set Up SW3P	1	09-Sep-20	09-Sep-20	25														
1N-540	Remove MBGF	1	10-Sep-20	10-Sep-20	25														

█ Actual Work ◆ Milestone
█ Remaining Work ◀ Summary
█ Critical Remaining Work

Activity ID	Activity Name	Duration	Start	Finish	Total Float	2020				2021				2022				2023	
						Q3	Q4	Q1	Q2	Q3	Q4	Q1	Q2	Q3	Q4	Q1	Q2		
1N-545	Install MBGF	2	11-Sep-20	14-Sep-20	25														
Culvert Crossing O		4	09-Sep-20	14-Sep-20	25														
1N-550	Set Up Channelizing Devices and TCP	1	09-Sep-20	09-Sep-20	25														
1N-555	Set Up SW3P	1	09-Sep-20	09-Sep-20	25														
1N-560	Remove MBGF	1	10-Sep-20	10-Sep-20	25														
1N-565	Install MBGF	2	11-Sep-20	14-Sep-20	25														
Southbound Side (K,L,M,N,O)		8	23-Sep-20	06-Oct-20	21														
Culvert Crossing K		8	23-Sep-20	06-Oct-20	21														
1S-410	Set Up Channelizing Devices and TCP	1	23-Sep-20	23-Sep-20	21														
1S-420	Set Up SW3P	1	23-Sep-20	23-Sep-20	21														
1S-430	Remove Existing End Treatments	1	24-Sep-20	24-Sep-20	21														
1S-435	Construct Culvert Extensions	4	25-Sep-20	02-Oct-20	21														
1S-440	Install Proposed End Treatments	2	05-Oct-20	06-Oct-20	21														
Culvert Crossing L		4	23-Sep-20	28-Sep-20	25														
1S-450	Set Up Channelizing Devices and TCP	1	23-Sep-20	23-Sep-20	25														
1S-460	Set Up SW3P	1	23-Sep-20	23-Sep-20	25														
1S-470	Remove Existing End Treatments	1	24-Sep-20	24-Sep-20	25														
1S-480	Install Proposed End Treatments	2	25-Sep-20	28-Sep-20	25														
Culvert Crossing M		4	23-Sep-20	28-Sep-20	25														
1S-490	Set Up Channelizing Devices and TCP	1	23-Sep-20	23-Sep-20	25														
1S-500	Set Up SW3P	1	23-Sep-20	23-Sep-20	25														
1S-510	Remove MBGF	1	24-Sep-20	24-Sep-20	25														
1S-520	Install MBGF	2	25-Sep-20	28-Sep-20	25														
Culvert Crossing N		4	23-Sep-20	28-Sep-20	25														
1S-530	Set Up Channelizing Devices and TCP	1	23-Sep-20	23-Sep-20	25														
1S-535	Set Up SW3P	1	23-Sep-20	23-Sep-20	25														
1S-540	Remove MBGF	1	24-Sep-20	24-Sep-20	25														
1S-545	Install MBGF	2	25-Sep-20	28-Sep-20	25														
Culvert Crossing O		4	23-Sep-20	28-Sep-20	25														
1S-550	Set Up Channelizing Devices and TCP	1	23-Sep-20	23-Sep-20	25														
1S-555	Set Up SW3P	1	23-Sep-20	23-Sep-20	25														
1S-560	Remove MBGF	1	24-Sep-20	24-Sep-20	25														
1S-565	Install MBGF	2	25-Sep-20	28-Sep-20	25														
Northbound Side (P,Q,R,S,T)		8	07-Oct-20	20-Oct-20	21														
Culvert Crossing P		4	07-Oct-20	14-Oct-20	25														
1N-570	Set Up Channelizing Devices and TCP	1	07-Oct-20	07-Oct-20	25														
1N-575	Set Up SW3P	1	07-Oct-20	07-Oct-20	25														
1N-580	Remove Existing End Treatments	1	09-Oct-20	09-Oct-20	25														
1N-585	Install Proposed End Treatments	2	12-Oct-20	14-Oct-20	25														
Culvert Crossing Q		8	07-Oct-20	20-Oct-20	21														
1N-590	Set Up Channelizing Devices and TCP	1	07-Oct-20	07-Oct-20	21														
1N-595	Set Up SW3P	1	07-Oct-20	07-Oct-20	21														
1N-600	Remove Existing End Treatments	1	09-Oct-20	09-Oct-20	21														
1N-602	Construct Culvert Extensions	4	12-Oct-20	16-Oct-20	21														
1N-605	Install Proposed End Treatments	2	19-Oct-20	20-Oct-20	21														

█ Actual Work ◆ Milestone
█ Remaining Work ◀ Summary
█ Critical Remaining Work

Project Duration: 29 months
 Standard Workweek. Average 17 work days per month

Activity ID	Activity Name	Duration	Start	Finish	Total Float	2020				2021				2022				2023					
						Q3	Q4	Q1	Q2	Q3	Q4	Q1	Q2	Q3	Q4	Q1	Q2						
Culvert Crossing R						4	07-Oct-20	14-Oct-20	25														
1N-610	Set Up Channelizing Devices and TCP	1	07-Oct-20	07-Oct-20	25																		
1N-615	Set Up SW3P	1	07-Oct-20	07-Oct-20	25																		
1N-620	Remove Existing End Treatments	1	09-Oct-20	09-Oct-20	25																		
1N-625	Install Proposed End Treatments	2	12-Oct-20	14-Oct-20	25																		
Culvert Crossing S						4	07-Oct-20	14-Oct-20	25														
1N-630	Set Up Channelizing Devices and TCP	1	07-Oct-20	07-Oct-20	25																		
1N-635	Set Up SW3P	1	07-Oct-20	07-Oct-20	25																		
1N-640	Remove Existing End Treatments	1	09-Oct-20	09-Oct-20	25																		
1N-645	Install Proposed End Treatments	2	12-Oct-20	14-Oct-20	25																		
Culvert Crossing T						8	07-Oct-20	20-Oct-20	21														
1N-650	Set Up Channelizing Devices and TCP	1	07-Oct-20	07-Oct-20	21																		
1N-655	Set Up SW3P	1	07-Oct-20	07-Oct-20	21																		
1N-660	Remove Existing End Treatments	1	09-Oct-20	09-Oct-20	21																		
1N-662	Construct Culvert Extensions	4	12-Oct-20	16-Oct-20	21																		
1N-665	Install Proposed End Treatments	2	19-Oct-20	20-Oct-20	21																		
Southbound Side (P,Q,R,S,T)						8	22-Oct-20	03-Nov-20	21														
Culvert Crossing P						4	22-Oct-20	27-Oct-20	25														
1S-570	Set Up Channelizing Devices and TCP	1	22-Oct-20	22-Oct-20	25																		
1S-575	Set Up SW3P	1	22-Oct-20	22-Oct-20	25																		
1S-580	Remove Existing End Treatments	1	23-Oct-20	23-Oct-20	25																		
1S-585	Install Proposed End Treatments	2	26-Oct-20	27-Oct-20	25																		
Culvert Crossing Q						8	22-Oct-20	03-Nov-20	21														
1S-590	Set Up Channelizing Devices and TCP	1	22-Oct-20	22-Oct-20	21																		
1S-595	Set Up SW3P	1	22-Oct-20	22-Oct-20	21																		
1S-600	Remove Existing End Treatments	1	23-Oct-20	23-Oct-20	21																		
1S-602	Construct Culvert Extensions	4	26-Oct-20	30-Oct-20	21																		
1S-605	Install Proposed End Treatments	2	02-Nov-20	03-Nov-20	21																		
Culvert Crossing R						4	22-Oct-20	27-Oct-20	25														
1S-610	Set Up Channelizing Devices and TCP	1	22-Oct-20	22-Oct-20	25																		
1S-615	Set Up SW3P	1	22-Oct-20	22-Oct-20	25																		
1S-620	Remove Existing End Treatments	1	23-Oct-20	23-Oct-20	25																		
1S-625	Install Proposed End Treatments	2	26-Oct-20	27-Oct-20	25																		
Culvert Crossing S						4	22-Oct-20	27-Oct-20	25														
1S-630	Set Up Channelizing Devices and TCP	1	22-Oct-20	22-Oct-20	25																		
1S-635	Set Up SW3P	1	22-Oct-20	22-Oct-20	25																		
1S-640	Remove Existing End Treatments	1	23-Oct-20	23-Oct-20	25																		
1S-645	Install Proposed End Treatments	2	26-Oct-20	27-Oct-20	25																		
Culvert Crossing T						8	22-Oct-20	03-Nov-20	21														
1S-650	Set Up Channelizing Devices and TCP	1	22-Oct-20	22-Oct-20	21																		
1S-655	Set Up SW3P	1	22-Oct-20	22-Oct-20	21																		
1S-660	Remove Existing End Treatments	1	23-Oct-20	23-Oct-20	21																		
1S-662	Construct Culvert Extensions	4	26-Oct-20	30-Oct-20	21																		
1S-665	Install Proposed End Treatments	2	02-Nov-20	03-Nov-20	21																		
Northbound Side (U,V,W,X,Y)						8	04-Nov-20	18-Nov-20	21														

█ Actual Work ◆ Milestone
█ Remaining Work ◀ Summary
█ Critical Remaining Work

Project Duration: 29 months
 Standard Workweek. Average 17 work days per month

Activity ID	Activity Name	Duration	Start	Finish	Total Float	2020				2021				2022				2023	
						Q3	Q4	Q1	Q2	Q3	Q4	Q1	Q2	Q3	Q4	Q1	Q2		
Culvert Crossing U						8	04-Nov-20	18-Nov-20	21										
1N-670	Set Up Channelizing Devices and TCP	1	04-Nov-20	04-Nov-20	21														
1N-675	Set Up SW3P	1	04-Nov-20	04-Nov-20	21														
1N-680	Remove Existing End Treatments	1	05-Nov-20	05-Nov-20	21														
1N-682	Construct Culvert Extensions	4	06-Nov-20	13-Nov-20	21														
1N-685	Install Proposed End Treatments	2	16-Nov-20	18-Nov-20	21														
Culvert Crossing V						8	04-Nov-20	18-Nov-20	21										
1N-690	Set Up Channelizing Devices and TCP	1	04-Nov-20	04-Nov-20	21														
1N-695	Set Up SW3P	1	04-Nov-20	04-Nov-20	21														
1N-700	Remove Existing End Treatments	1	05-Nov-20	05-Nov-20	21														
1N-702	Construct Culvert Extensions	4	06-Nov-20	13-Nov-20	21														
1N-705	Install Proposed End Treatments	2	16-Nov-20	18-Nov-20	21														
Culvert Crossing W						8	04-Nov-20	18-Nov-20	21										
1N-710	Set Up Channelizing Devices and TCP	1	04-Nov-20	04-Nov-20	21														
1N-715	Set Up SW3P	1	04-Nov-20	04-Nov-20	21														
1N-720	Remove Existing End Treatments	1	05-Nov-20	05-Nov-20	21														
1N-722	Construct Culvert Extensions	4	06-Nov-20	13-Nov-20	21														
1N-725	Install Proposed End Treatments	2	16-Nov-20	18-Nov-20	21														
Culvert Crossing X						8	04-Nov-20	18-Nov-20	21										
1N-730	Set Up Channelizing Devices and TCP	1	04-Nov-20	04-Nov-20	21														
1N-735	Set Up SW3P	1	04-Nov-20	04-Nov-20	21														
1N-740	Remove Existing End Treatments	1	05-Nov-20	05-Nov-20	21														
1N-742	Construct Culvert Extensions	4	06-Nov-20	13-Nov-20	21														
1N-745	Install Proposed End Treatments	2	16-Nov-20	18-Nov-20	21														
Culvert Crossing Y						8	04-Nov-20	18-Nov-20	21										
1N-750	Set Up Channelizing Devices and TCP	1	04-Nov-20	04-Nov-20	21														
1N-755	Set Up SW3P	1	04-Nov-20	04-Nov-20	21														
1N-760	Remove Existing End Treatments	1	05-Nov-20	05-Nov-20	21														
1N-762	Construct Culvert Extensions	4	06-Nov-20	13-Nov-20	21														
1N-765	Install Proposed End Treatments	2	16-Nov-20	18-Nov-20	21														
Southbound Side (U,V,W,X,Y)						8	19-Nov-20	10-Dec-20	21										
Culvert Crossing U						8	19-Nov-20	10-Dec-20	21										
1S-670	Set Up Channelizing Devices and TCP	1	19-Nov-20	19-Nov-20	21														
1S-675	Set Up SW3P	1	19-Nov-20	19-Nov-20	21														
1S-680	Remove Existing End Treatments	1	20-Nov-20	20-Nov-20	21														
1S-682	Construct Culvert Extensions	4	30-Nov-20	04-Dec-20	21														
1S-685	Install Proposed End Treatments	2	08-Dec-20	10-Dec-20	21														
Culvert Crossing V						8	19-Nov-20	10-Dec-20	21										
1S-690	Set Up Channelizing Devices and TCP	1	19-Nov-20	19-Nov-20	21														
1S-695	Set Up SW3P	1	19-Nov-20	19-Nov-20	21														
1S-700	Remove Existing End Treatments	1	20-Nov-20	20-Nov-20	21														
1S-702	Construct Culvert Extensions	4	30-Nov-20	04-Dec-20	21														
1S-705	Install Proposed End Treatments	2	08-Dec-20	10-Dec-20	21														
Culvert Crossing W						8	19-Nov-20	10-Dec-20	21										
1S-710	Set Up Channelizing Devices and TCP	1	19-Nov-20	19-Nov-20	21														

█ Actual Work ◆ Milestone
█ Remaining Work ◀ Summary
█ Critical Remaining Work

Activity ID	Activity Name	Duration	Start	Finish	Total Float	2020				2021				2022				2023	
						Q3	Q4	Q1	Q2	Q3	Q4	Q1	Q2	Q3	Q4	Q1	Q2		
1S-715	Set Up SW3P	1	19-Nov-20	19-Nov-20	21														
1S-720	Remove Existing End Treatments	1	20-Nov-20	20-Nov-20	21														
1S-722	Construct Culvert Extensions	4	30-Nov-20	04-Dec-20	21														
1S-725	Install Proposed End Treatments	2	08-Dec-20	10-Dec-20	21														
Culvert Crossing X		8	19-Nov-20	10-Dec-20	21														
1S-730	Set Up Channelizing Devices and TCP	1	19-Nov-20	19-Nov-20	21														
1S-735	Set Up SW3P	1	19-Nov-20	19-Nov-20	21														
1S-740	Remove Existing End Treatments	1	20-Nov-20	20-Nov-20	21														
1S-742	Construct Culvert Extensions	4	30-Nov-20	04-Dec-20	21														
1S-745	Install Proposed End Treatments	2	08-Dec-20	10-Dec-20	21														
Culvert Crossing Y		8	19-Nov-20	10-Dec-20	21														
1S-750	Set Up Channelizing Devices and TCP	1	19-Nov-20	19-Nov-20	21														
1S-755	Set Up SW3P	1	19-Nov-20	19-Nov-20	21														
1S-760	Remove Existing End Treatments	1	20-Nov-20	20-Nov-20	21														
1S-762	Construct Culvert Extensions	4	30-Nov-20	04-Dec-20	21														
1S-765	Install Proposed End Treatments	2	08-Dec-20	10-Dec-20	21														
Northbound Side (Z,AA,AB,AC,AD)		8	11-Dec-20	23-Dec-20	21														
Culvert Crossing Z		4	11-Dec-20	17-Dec-20	25														
1N-770	Set Up Channelizing Devices and TCP	1	11-Dec-20	11-Dec-20	25														
1N-775	Set Up SW3P	1	11-Dec-20	11-Dec-20	25														
1N-780	Remove Existing End Treatments	1	14-Dec-20	14-Dec-20	25														
1N-785	Install Proposed End Treatments	2	16-Dec-20	17-Dec-20	25														
Culvert Crossing AA		4	11-Dec-20	17-Dec-20	25														
1N-790	Set Up Channelizing Devices and TCP	1	11-Dec-20	11-Dec-20	25														
1N-795	Set Up SW3P	1	11-Dec-20	11-Dec-20	25														
1N-800	Remove Existing End Treatments	1	14-Dec-20	14-Dec-20	25														
1N-805	Install Proposed End Treatments	2	16-Dec-20	17-Dec-20	25														
Culvert Crossing AB		8	11-Dec-20	23-Dec-20	21														
1N-810	Set Up Channelizing Devices and TCP	1	11-Dec-20	11-Dec-20	21														
1N-815	Set Up SW3P	1	11-Dec-20	11-Dec-20	21														
1N-820	Remove Existing End Treatments	1	14-Dec-20	14-Dec-20	21														
1N-822	Construct Culvert Extension	4	16-Dec-20	21-Dec-20	21														
1N-825	Install Proposed End Treatments	2	22-Dec-20	23-Dec-20	21														
Culvert Crossing AC		4	11-Dec-20	17-Dec-20	25														
1N-830	Set Up Channelizing Devices and TCP	1	11-Dec-20	11-Dec-20	25														
1N-835	Set Up SW3P	1	11-Dec-20	11-Dec-20	25														
1N-840	Remove Existing End Treatments	1	14-Dec-20	14-Dec-20	25														
1N-845	Install Proposed End Treatments	2	16-Dec-20	17-Dec-20	25														
Culvert Crossing AD		8	11-Dec-20	23-Dec-20	21														
1N-850	Set Up Channelizing Devices and TCP	1	11-Dec-20	11-Dec-20	21														
1N-855	Set Up SW3P	1	11-Dec-20	11-Dec-20	21														
1N-860	Remove Existing End Treatments	1	14-Dec-20	14-Dec-20	21														
1N-862	Construct Culvert Extensions	4	16-Dec-20	21-Dec-20	21														
1N-865	Install Proposed End Treatments	2	22-Dec-20	23-Dec-20	21														
Southbound Side (Z,AA,AB,AC,AD)		8	04-Jan-21	14-Jan-21	21														

█ Actual Work ◆ Milestone
█ Remaining Work ◀ Summary
█ Critical Remaining Work

Project Duration: 29 months
 Standard Workweek. Average 17 work days per month

Activity ID	Activity Name	Duration	Start	Finish	Total Float	2020		2021				2022				2023	
						Q3	Q4	Q1	Q2	Q3	Q4	Q1	Q2	Q3	Q4	Q1	Q2
Culvert Crossing Z						4	04-Jan-21	07-Jan-21	25								
1S-770	Set Up Channelizing Devices and TCP	1	04-Jan-21	04-Jan-21	25												
1S-775	Set Up SW3P	1	04-Jan-21	04-Jan-21	25												
1S-780	Remove Existing End Treatments	1	05-Jan-21	05-Jan-21	25												
1S-785	Install Proposed End Treatments	2	06-Jan-21	07-Jan-21	25												
Culvert Crossing AA						4	04-Jan-21	07-Jan-21	25								
1S-790	Set Up Channelizing Devices and TCP	1	04-Jan-21	04-Jan-21	25												
1S-795	Set Up SW3P	1	04-Jan-21	04-Jan-21	25												
1S-800	Remove Existing End Treatments	1	05-Jan-21	05-Jan-21	25												
1S-805	Install Proposed End Treatments	2	06-Jan-21	07-Jan-21	25												
Culvert Crossing AB						8	04-Jan-21	14-Jan-21	21								
1S-810	Set Up Channelizing Devices and TCP	1	04-Jan-21	04-Jan-21	21												
1S-815	Set Up SW3P	1	04-Jan-21	04-Jan-21	21												
1S-820	Remove Existing End Treatments	1	05-Jan-21	05-Jan-21	21												
1S-822	Construct Culvert Extension	4	06-Jan-21	11-Jan-21	21												
1S-825	Install Proposed End Treatments	2	12-Jan-21	14-Jan-21	21												
Culvert Crossing AC						4	04-Jan-21	07-Jan-21	25								
1S-830	Set Up Channelizing Devices and TCP	1	04-Jan-21	04-Jan-21	25												
1S-835	Set Up SW3P	1	04-Jan-21	04-Jan-21	25												
1S-840	Remove Existing End Treatments	1	05-Jan-21	05-Jan-21	25												
1S-845	Install Proposed End Treatments	2	06-Jan-21	07-Jan-21	25												
Culvert Crossing AD						8	04-Jan-21	14-Jan-21	21								
1S-850	Set Up Channelizing Devices and TCP	1	04-Jan-21	04-Jan-21	21												
1S-855	Set Up SW3P	1	04-Jan-21	04-Jan-21	21												
1S-860	Remove Existing End Treatments	1	05-Jan-21	05-Jan-21	21												
1S-862	Construct Culvert Extensions	4	06-Jan-21	11-Jan-21	21												
1S-865	Install Proposed End Treatments	2	12-Jan-21	14-Jan-21	21												
Northbound Side (AE,AF,AG,AH,AI)						8	15-Jan-21	29-Jan-21	21								
Culvert Crossing AE						8	15-Jan-21	29-Jan-21	21								
1N-870	Set Up Channelizing Devices and TCP	1	15-Jan-21	15-Jan-21	21												
1N-875	Set Up SW3P	1	15-Jan-21	15-Jan-21	21												
1N-880	Remove Existing End Treatments	1	20-Jan-21	20-Jan-21	21												
1N-882	Construct Culvert Extension	4	21-Jan-21	26-Jan-21	21												
1N-885	Install Proposed End Treatments	2	27-Jan-21	29-Jan-21	21												
Culvert Crossing AF						8	15-Jan-21	29-Jan-21	21								
1N-890	Set Up Channelizing Devices and TCP	1	15-Jan-21	15-Jan-21	21												
1N-895	Set Up SW3P	1	15-Jan-21	15-Jan-21	21												
1N-900	Remove Existing End Treatments	1	20-Jan-21	20-Jan-21	21												
1N-902	Construct Culvert Extension	4	21-Jan-21	26-Jan-21	21												
1N-905	Install Proposed End Treatments	2	27-Jan-21	29-Jan-21	21												
Culvert Crossing AG						8	15-Jan-21	29-Jan-21	21								
1N-910	Set Up Channelizing Devices and TCP	1	15-Jan-21	15-Jan-21	21												
1N-915	Set Up SW3P	1	15-Jan-21	15-Jan-21	21												
1N-920	Remove Existing End Treatments	1	20-Jan-21	20-Jan-21	21												
1N-922	Construct Culvert Extension	4	21-Jan-21	26-Jan-21	21												

■ Actual Work ◆ Milestone
■ Remaining Work ◀ Summary
■ Critical Remaining Work

Activity ID	Activity Name	Duration	Start	Finish	Total Float	2020		2021				2022				2023	
								Q1	Q2	Q3	Q4	Q1	Q2	Q3	Q4	Q1	Q2
1N-925	Install Proposed End Treatments	2	27-Jan-21	29-Jan-21	21												
Culvert Crossing AH		8	15-Jan-21	29-Jan-21	21												
1N-930	Set Up Channelizing Devices and TCP	1	15-Jan-21	15-Jan-21	21												
1N-935	Set Up SW3P	1	15-Jan-21	15-Jan-21	21												
1N-940	Remove Existing End Treatments & MBGF	1	20-Jan-21	20-Jan-21	21												
1N-942	Construct Culvert Extension	4	21-Jan-21	26-Jan-21	21												
1N-945	Install Proposed End Treatments & MBGF	2	27-Jan-21	29-Jan-21	21												
Culvert Crossing AI		8	15-Jan-21	29-Jan-21	21												
1N-950	Set Up Channelizing Devices and TCP	1	15-Jan-21	15-Jan-21	21												
1N-955	Set Up SW3P	1	15-Jan-21	15-Jan-21	21												
1N-960	Remove Existing End Treatments	1	20-Jan-21	20-Jan-21	21												
1N-962	Construct Culvert Extension	4	21-Jan-21	26-Jan-21	21												
1N-965	Install Proposed End Treatments	2	27-Jan-21	29-Jan-21	21												
Southbound Side (AE,AF,AG,AH,AI)		8	01-Feb-21	12-Feb-21	21												
Culvert Crossing AE		8	01-Feb-21	12-Feb-21	21												
1S-870	Set Up Channelizing Devices and TCP	1	01-Feb-21	01-Feb-21	21												
1S-875	Set Up SW3P	1	01-Feb-21	01-Feb-21	21												
1S-880	Remove Existing End Treatments	1	03-Feb-21	03-Feb-21	21												
1S-882	Construct Culvert Extension	4	04-Feb-21	09-Feb-21	21												
1S-885	Install Proposed End Treatments	2	11-Feb-21	12-Feb-21	21												
Culvert Crossing AF		8	01-Feb-21	12-Feb-21	21												
1S-890	Set Up Channelizing Devices and TCP	1	01-Feb-21	01-Feb-21	21												
1S-895	Set Up SW3P	1	01-Feb-21	01-Feb-21	21												
1S-900	Remove Existing End Treatments	1	03-Feb-21	03-Feb-21	21												
1S-902	Construct Culvert Extension	4	04-Feb-21	09-Feb-21	21												
1S-905	Install Proposed End Treatments	2	11-Feb-21	12-Feb-21	21												
Culvert Crossing AG		8	01-Feb-21	12-Feb-21	21												
1S-910	Set Up Channelizing Devices and TCP	1	01-Feb-21	01-Feb-21	21												
1S-915	Set Up SW3P	1	01-Feb-21	01-Feb-21	21												
1S-920	Remove Existing End Treatments	1	03-Feb-21	03-Feb-21	21												
1S-922	Construct Culvert Extension	4	04-Feb-21	09-Feb-21	21												
1S-925	Install Proposed End Treatments	2	11-Feb-21	12-Feb-21	21												
Culvert Crossing AH		8	01-Feb-21	12-Feb-21	21												
1S-930	Set Up Channelizing Devices and TCP	1	01-Feb-21	01-Feb-21	21												
1S-935	Set Up SW3P	1	01-Feb-21	01-Feb-21	21												
1S-940	Remove Existing End Treatments & MBGF	1	03-Feb-21	03-Feb-21	21												
1S-942	Construct Culvert Extension	4	04-Feb-21	09-Feb-21	21												
1S-945	Install Proposed End Treatments & MBGF	2	11-Feb-21	12-Feb-21	21												
Culvert Crossing AI		8	01-Feb-21	12-Feb-21	21												
1S-950	Set Up Channelizing Devices and TCP	1	01-Feb-21	01-Feb-21	21												
1S-955	Set Up SW3P	1	01-Feb-21	01-Feb-21	21												
1S-960	Remove Existing End Treatments	1	03-Feb-21	03-Feb-21	21												
1S-962	Construct Culvert Extension	4	04-Feb-21	09-Feb-21	21												
1S-965	Install Proposed End Treatments	2	11-Feb-21	12-Feb-21	21												
Phase 2- Roadway Construction (Widening)/Bridge Replacement		203	15-Jul-20	26-Jul-21	0												

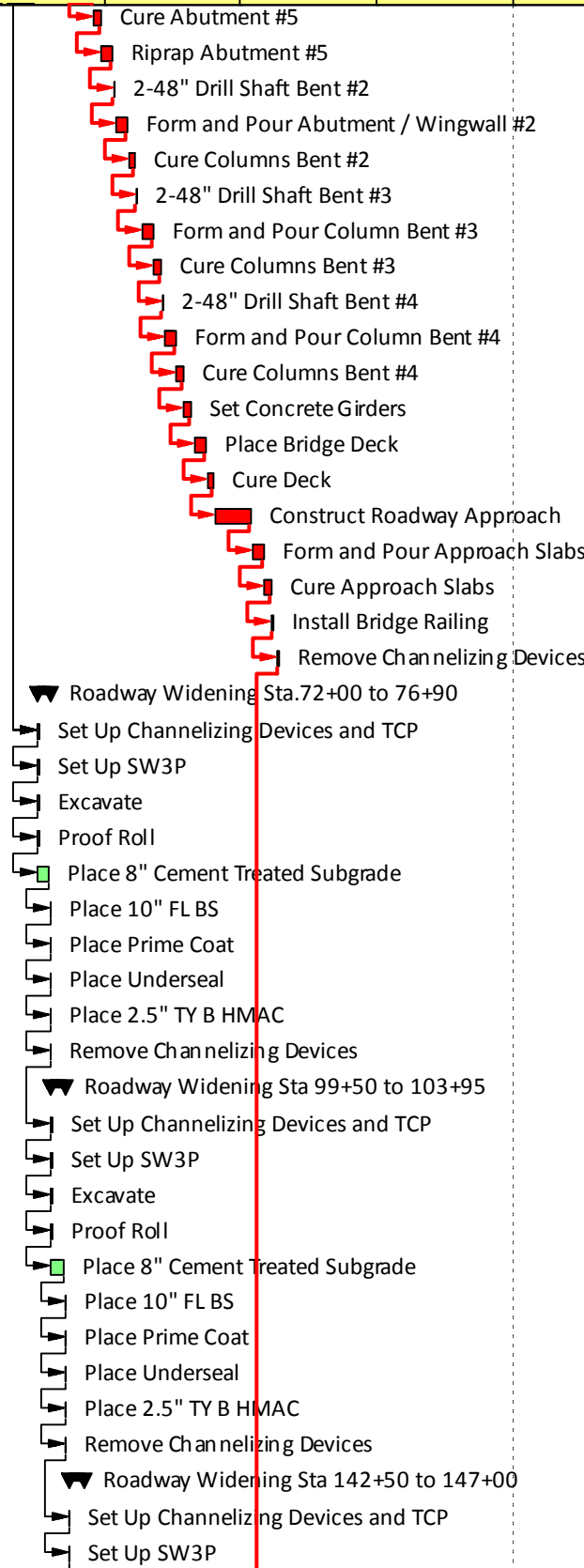
█ Actual Work ◆ Milestone
█ Remaining Work ◀ Summary
█ Critical Remaining Work

Project Duration: 29 months
 Standard Workweek. Average 17 work days per month

Activity ID	Activity Name	Duration	Start	Finish	Total Float	2020		2021				2022				2023	
								Q3	Q4	Q1	Q2	Q3	Q4	Q1	Q2	Q3	Q4
18 Mile Coletto Creek Bridge Replacement		203	15-Jul-20	26-Jul-21	0	18 Mile Coletto Creek Bridge Replacement											
Step 1 - SB Widening		100	15-Jul-20	22-Jan-21	0	Step 1 - SB Widening											
2.1-110	Set Up Channelizing Devices and TCP	1	15-Jul-20	15-Jul-20	0												
2.1-120	Set Up SW3P	1	15-Jul-20	15-Jul-20	0												
2.1-130	Remove Existing Structure	5	16-Jul-20	23-Jul-20	0												
2.1-140	Excavation and Embankment	5	24-Jul-20	31-Jul-20	0												
2.1-150	1-18" Drill Shaft and 2-36" Drill Shaft Abutment #1	1	03-Aug-20	03-Aug-20	0												
2.1-160	Form and Pour Abutment / Wingwall #1	5	04-Aug-20	11-Aug-20	0												
2.1-170	Cure Abutment #1	5	12-Aug-20	16-Aug-20	0												
2.1-180	Riprap Abutment #1	5	17-Aug-20	24-Aug-20	0												
2.1-190	Install Temp Shoring Abutment #5	1	25-Aug-20	25-Aug-20	0												
2.1-200	1-18" Drill Shaft and 2-36" Drill Shaft Abutment #5	1	27-Aug-20	27-Aug-20	0												
2.1-210	Form and Pour Abutment / Wingwall #5	5	28-Aug-20	03-Sep-20	0												
2.1-220	Cure Abutment #5	5	04-Sep-20	08-Sep-20	1												
2.1-230	Riprap Abutment #5	5	09-Sep-20	15-Sep-20	1												
2.1-240	2-48" Drill Shaft Bent #2	1	17-Sep-20	17-Sep-20	1												
2.1-250	Form and Pour Column Bent #2	5	18-Sep-20	25-Sep-20	1												
2.1-260	Cure Columns Bent #2	5	26-Sep-20	30-Sep-20	4												
2.1-270	2-48" Drill Shaft Bent #3	1	02-Oct-20	02-Oct-20	1												
2.1-280	Form and Pour Column Bent #3	5	05-Oct-20	12-Oct-20	1												
2.1-290	Cure Columns Bent #3	5	13-Oct-20	17-Oct-20	2												
2.1-300	2-48" Drill Shaft Bent #4	1	19-Oct-20	19-Oct-20	1												
2.1-310	Form and Pour Column Bent #4	5	20-Oct-20	27-Oct-20	1												
2.1-320	Cure Columns Bent #4	5	28-Oct-20	01-Nov-20	2												
2.1-330	Set Concrete Girders	5	02-Nov-20	06-Nov-20	2												
2.1-340	Place Bridge Deck	5	10-Nov-20	18-Nov-20	2												
2.1-350	Cure Deck	5	19-Nov-20	23-Nov-20	8												
2.1-360	Construct Roadway Approach	15	30-Nov-20	04-Jan-21	2												
2.1-370	Form and Pour Approach Slabs	5	05-Jan-21	11-Jan-21	2												
2.1-380	Cure Approach Slabs	5	12-Jan-21	16-Jan-21	3												
2.1-390	Install Bridge Railing	2	20-Jan-21	21-Jan-21	0												
2.1-400	Remove Channelizing Devices	1	22-Jan-21	22-Jan-21	0												
Step 2 - NB Widening		103	25-Jan-21	26-Jul-21	0	Step 2 - NB Widening											
2.2-110	Set Up Channelizing Devices and TCP	1	25-Jan-21	25-Jan-21	0												
2.2-120	Set Up SW3P	1	25-Jan-21	25-Jan-21	0												
2.2-130	Remove Existing Structure	5	26-Jan-21	03-Feb-21	0												
2.2-140	Excavation and Embankment	5	04-Feb-21	11-Feb-21	0												
2.2-150	1-18" Drill Shaft and 3-36" Drill Shaft Abutment #1	2	12-Feb-21	15-Feb-21	0												
2.2-160	Form and Pour Abutment / Wingwall #1	5	17-Feb-21	23-Feb-21	0												
2.2-170	Cure Abutment #1	5	24-Feb-21	28-Feb-21	0												
2.2-180	Riprap Abutment #1	5	01-Mar-21	08-Mar-21	0												
2.2-190	Install Temp Shoring Abutment #5	1	09-Mar-21	09-Mar-21	0												
2.2-200	1-18" Drill Shaft and 2-36" Drill Shaft Abutment #5	2	11-Mar-21	12-Mar-21	0												
2.2-210	Form and Pour Abutment / Wingwall #5	5	17-Mar-21	24-Mar-21	0												

█ Actual Work ◆ Milestone
█ Remaining Work ◀ Summary
█ Critical Remaining Work

Activity ID	Activity Name	Duration	Start	Finish	Total Float	2020		2021				2022				2023	
						Q3	Q4	Q1	Q2	Q3	Q4	Q1	Q2	Q3	Q4	Q1	Q2
2.2-220	Cure Abutment #5	5	25-Mar-21	29-Mar-21	0												
2.2-230	Riprap Abutment #5	5	30-Mar-21	06-Apr-21	0												
2.2-240	2-48" Drill Shaft Bent #2	1	07-Apr-21	07-Apr-21	0												
2.2-250	Form and Pour Abutment / Wingwall #2	5	09-Apr-21	16-Apr-21	0												
2.2-260	Cure Columns Bent #2	5	17-Apr-21	21-Apr-21	0												
2.2-270	2-48" Drill Shaft Bent #3	1	22-Apr-21	22-Apr-21	0												
2.2-280	Form and Pour Column Bent #3	5	26-Apr-21	03-May-21	0												
2.2-290	Cure Columns Bent #3	5	04-May-21	08-May-21	1												
2.2-300	2-48" Drill Shaft Bent #4	1	10-May-21	10-May-21	0												
2.2-310	Form and Pour Column Bent #4	5	11-May-21	18-May-21	0												
2.2-320	Cure Columns Bent #4	5	19-May-21	23-May-21	0												
2.2-330	Set Concrete Girders	5	24-May-21	28-May-21	0												
2.2-340	Place Bridge Deck	5	01-Jun-21	08-Jun-21	0												
2.2-350	Cure Deck	5	09-Jun-21	13-Jun-21	0												
2.2-360	Construct Roadway Approach	15	14-Jun-21	08-Jul-21	0												
2.2-370	Form and Pour Approach Slabs	5	09-Jul-21	16-Jul-21	0												
2.2-380	Cure Approach Slabs	5	17-Jul-21	21-Jul-21	0												
2.2-390	Install Bridge Railing	2	22-Jul-21	23-Jul-21	0												
2.2-400	Remove Channelizing Devices	1	26-Jul-21	26-Jul-21	0												
Roadway Widening Sta.72+00 to 76+90		6	15-Feb-21	23-Feb-21	21												
2-110	Set Up Channelizing Devices and TCP	1	15-Feb-21	15-Feb-21	21												
2-120	Set Up SW3P	1	15-Feb-21	15-Feb-21	21												
2-130	Excavate	1	15-Feb-21	15-Feb-21	21												
2-140	Proof Roll	1	15-Feb-21	15-Feb-21	21												
2-150	Place 8" Cement Treated Subgrade	5	15-Feb-21	22-Feb-21	21												
2-160	Place 10" FL BS	1	23-Feb-21	23-Feb-21	21												
2-170	Place Prime Coat	1	23-Feb-21	23-Feb-21	21												
2-180	Place Underseal	1	23-Feb-21	23-Feb-21	21												
2-190	Place 2.5" TY B HMAC	1	23-Feb-21	23-Feb-21	21												
2-200	Remove Channelizing Devices	1	23-Feb-21	23-Feb-21	21												
Roadway Widening Sta 99+50 to 103+95		6	24-Feb-21	05-Mar-21	21												
2-210	Set Up Channelizing Devices and TCP	1	24-Feb-21	24-Feb-21	21												
2-220	Set Up SW3P	1	24-Feb-21	24-Feb-21	21												
2-230	Excavate	1	24-Feb-21	24-Feb-21	21												
2-240	Proof Roll	1	24-Feb-21	24-Feb-21	21												
2-250	Place 8" Cement Treated Subgrade	5	24-Feb-21	04-Mar-21	21												
2-260	Place 10" FL BS	1	05-Mar-21	05-Mar-21	21												
2-270	Place Prime Coat	1	05-Mar-21	05-Mar-21	21												
2-280	Place Underseal	1	05-Mar-21	05-Mar-21	21												
2-290	Place 2.5" TY B HMAC	1	05-Mar-21	05-Mar-21	21												
2-300	Remove Channelizing Devices	1	05-Mar-21	05-Mar-21	21												
Roadway Widening Sta 142+50 to 147+00		6	08-Mar-21	18-Mar-21	21												
2-310	Set Up Channelizing Devices and TCP	1	08-Mar-21	08-Mar-21	21												
2-320	Set Up SW3P	1	08-Mar-21	08-Mar-21	21												

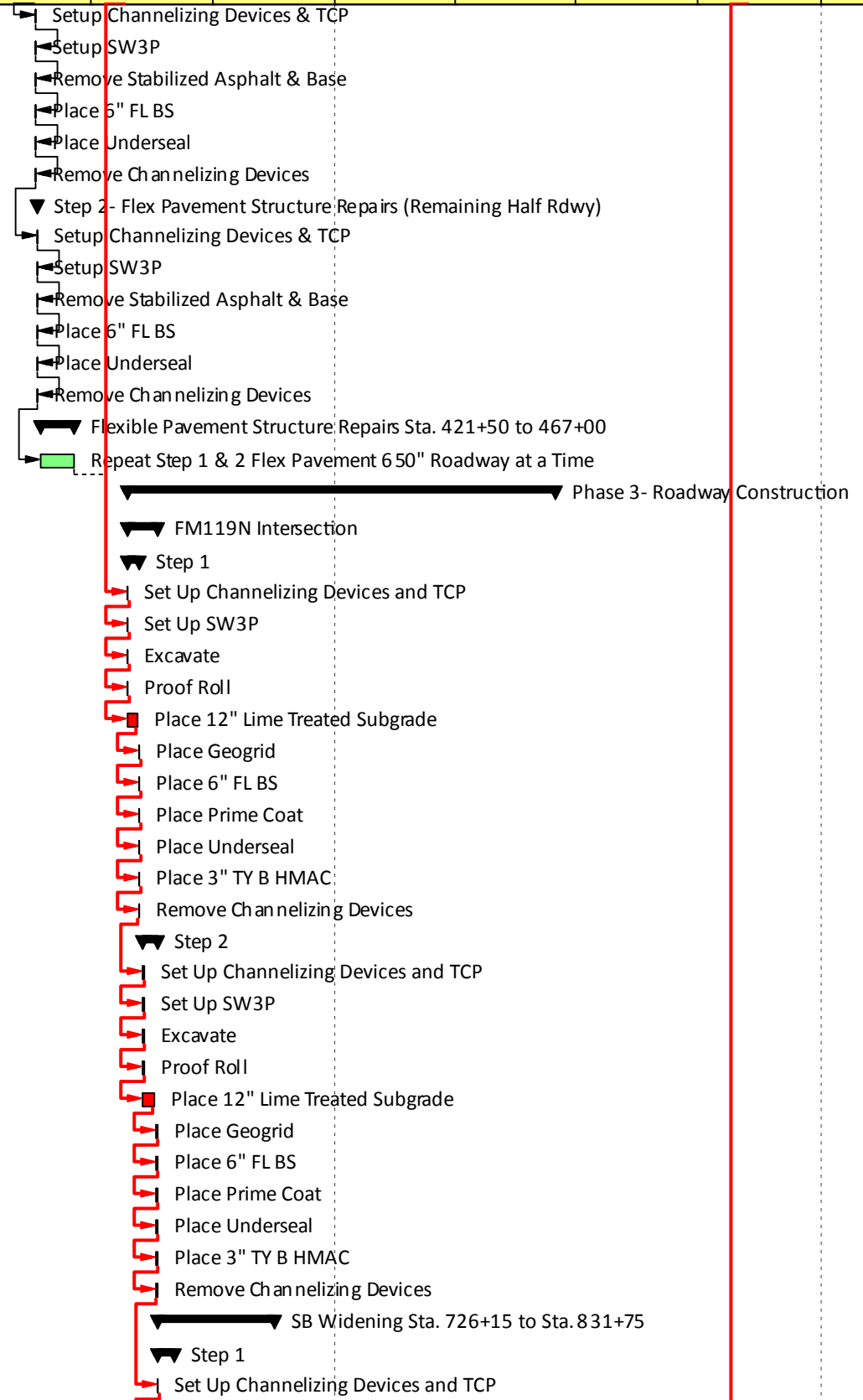


█ Actual Work ◆ Milestone
█ Remaining Work ◀ Summary
█ Critical Remaining Work

Activity ID	Activity Name	Duration	Start	Finish	Total Float	2020		2021				2022				2023	
						Q3	Q4	Q1	Q2	Q3	Q4	Q1	Q2	Q3	Q4	Q1	Q2
2-330	Excavate	1	08-Mar-21	08-Mar-21	21												
2-340	Proof Roll	1	08-Mar-21	08-Mar-21	21												
2-350	Place 8" Cement Treated Subgrade	5	08-Mar-21	17-Mar-21	21												
2-360	Place 10" FL BS	1	18-Mar-21	18-Mar-21	21												
2-370	Place Prime Coat	1	18-Mar-21	18-Mar-21	21												
2-380	Place Underseal	1	18-Mar-21	18-Mar-21	21												
2-390	Place 2.5" TY B HMAC	1	18-Mar-21	18-Mar-21	21												
2-400	Remove Channelizing Devices	1	18-Mar-21	18-Mar-21	21												
Roadway Widening Sta 218+50 to 224+00		6	19-Mar-21	29-Mar-21	21												
2-410	Set Up Channelizing Devices and TCP	1	19-Mar-21	19-Mar-21	21												
2-420	Set Up SW3P	1	19-Mar-21	19-Mar-21	21												
2-430	Excavate	1	19-Mar-21	19-Mar-21	21												
2-440	Proof Roll	1	19-Mar-21	19-Mar-21	21												
2-450	Place 8" Cement Treated Subgrade	5	19-Mar-21	26-Mar-21	21												
2-460	Place 10" FL BS	1	29-Mar-21	29-Mar-21	21												
2-470	Place Prime Coat	1	29-Mar-21	29-Mar-21	21												
2-480	Place Underseal	1	29-Mar-21	29-Mar-21	21												
2-490	Place 2.5" TY B HMAC	1	29-Mar-21	29-Mar-21	21												
2-500	Remove Channelizing Devices	1	29-Mar-21	29-Mar-21	21												
Roadway Widening Sta 300+00 to 415+00		28	30-Mar-21	18-May-21	21												
Step 1- SB Widening		14	30-Mar-21	22-Apr-21	21												
2-1310	Set Up Channelizing Devices and TCP	1	30-Mar-21	30-Mar-21	21												
2-1320	Set Up SW3P	1	30-Mar-21	30-Mar-21	21												
2-1330	Excavate	2	30-Mar-21	01-Apr-21	21												
2-1340	Proof Roll	1	02-Apr-21	02-Apr-21	21												
2-1350	Place 8" Cement Treated Subgrade	5	02-Apr-21	09-Apr-21	21												
2-1360	Place 10" FL BS	3	12-Apr-21	15-Apr-21	21												
2-1370	Place Prime Coat	1	16-Apr-21	16-Apr-21	21												
2-1380	Place Underseal	1	16-Apr-21	16-Apr-21	21												
2-1390	Place 2.5" TY B HMAC	2	19-Apr-21	21-Apr-21	21												
2-1400	Remove Channelizing Devices	1	22-Apr-21	22-Apr-21	21												
Step 2- NB Widening		14	26-Apr-21	18-May-21	21												
2-1410	Set Up Channelizing Devices and TCP	1	26-Apr-21	26-Apr-21	21												
2-1420	Set Up SW3P	1	26-Apr-21	26-Apr-21	21												
2-1430	Excavate	2	26-Apr-21	27-Apr-21	21												
2-1440	Proof Roll	1	29-Apr-21	29-Apr-21	21												
2-1450	Place 8" Cement Treated Subgrade	5	29-Apr-21	06-May-21	21												
2-1460	Place 10" FL BS	3	07-May-21	11-May-21	21												
2-1470	Place Prime Coat	1	12-May-21	12-May-21	21												
2-1480	Place Underseal	1	12-May-21	12-May-21	21												
2-1490	Place 2.5" TY B HMAC	2	13-May-21	14-May-21	21												
2-1500	Remove Channelizing Devices	1	18-May-21	18-May-21	21												
Flexible Pavement Structure Repairs Sta. 415+00 to 421+50		2	20-May-21	21-May-21	21												
Step 1- Flex Pavement Structure Repairs (Half Rdwy)		1	20-May-21	20-May-21	21												

█ Actual Work ◆ Milestone
█ Remaining Work ◀ Summary
█ Critical Remaining Work

Activity ID	Activity Name	Duration	Start	Finish	Total Float	2020		2021				2022				2023	
								Q3	Q4	Q1	Q2	Q3	Q4	Q1	Q2	Q3	Q4
2-1510	Setup Channelizing Devices & TCP	1	20-May-21	20-May-21	21												
2-1520	Setup SW3P	1	20-May-21	20-May-21	21												
2-1530	Remove Stabilized Asphalt & Base	1	20-May-21	20-May-21	21												
2-1540	Place 6" FL BS	1	20-May-21	20-May-21	21												
2-1550	Place Underseal	1	20-May-21	20-May-21	21												
2-1560	Remove Channelizing Devices	1	20-May-21	20-May-21	21												
Step 2- Flex Pavement Structure Repairs (Remaining Half Rdwy)		1	21-May-21	21-May-21	21												
2-1570	Setup Channelizing Devices & TCP	1	21-May-21	21-May-21	21												
2-1580	Setup SW3P	1	21-May-21	21-May-21	21												
2-1590	Remove Stabilized Asphalt & Base	1	21-May-21	21-May-21	21												
2-1600	Place 6" FL BS	1	21-May-21	21-May-21	21												
2-1610	Place Underseal	1	21-May-21	21-May-21	21												
2-1620	Remove Channelizing Devices	1	21-May-21	21-May-21	21												
Flexible Pavement Structure Repairs Sta. 421+50 to 467+00		16	24-May-21	18-Jun-21	21												
2-1630	Repeat Step 1 & 2 Flex Pavement 650" Roadway at a Time	16	24-May-21	18-Jun-21	21												
Phase 3- Roadway Construction		171	28-Jul-21	15-Jun-22	0												
FM119N Intersection		12	28-Jul-21	19-Aug-21	0												
Step 1		6	28-Jul-21	06-Aug-21	0												
3-010	Set Up Channelizing Devices and TCP	1	28-Jul-21	28-Jul-21	0												
3-020	Set Up SW3P	1	28-Jul-21	28-Jul-21	0												
3-030	Excavate	1	28-Jul-21	28-Jul-21	0												
3-040	Proof Roll	1	28-Jul-21	28-Jul-21	0												
3-050	Place 12" Lime Treated Subgrade	5	28-Jul-21	05-Aug-21	0												
3-060	Place Geogrid	1	06-Aug-21	06-Aug-21	0												
3-070	Place 6" FL BS	1	06-Aug-21	06-Aug-21	0												
3-080	Place Prime Coat	1	06-Aug-21	06-Aug-21	0												
3-090	Place Underseal	1	06-Aug-21	06-Aug-21	0												
3-100	Place 3" TY B HMA	1	06-Aug-21	06-Aug-21	0												
3-110	Remove Channelizing Devices	1	06-Aug-21	06-Aug-21	0												
Step 2		6	09-Aug-21	19-Aug-21	0												
3-120	Set Up Channelizing Devices and TCP	1	09-Aug-21	09-Aug-21	0												
3-130	Set Up SW3P	1	09-Aug-21	09-Aug-21	0												
3-140	Excavate	1	09-Aug-21	09-Aug-21	0												
3-150	Proof Roll	1	09-Aug-21	09-Aug-21	0												
3-160	Place 12" Lime Treated Subgrade	5	09-Aug-21	17-Aug-21	0												
3-170	Place Geogrid	1	19-Aug-21	19-Aug-21	0												
3-180	Place 6" FL BS	1	19-Aug-21	19-Aug-21	0												
3-190	Place Prime Coat	1	19-Aug-21	19-Aug-21	0												
3-200	Place Underseal	1	19-Aug-21	19-Aug-21	0												
3-210	Place 3" TY B HMA	1	19-Aug-21	19-Aug-21	0												
3-220	Remove Channelizing Devices	1	19-Aug-21	19-Aug-21	0												
SB Widening Sta. 726+15 to Sta. 831+75		51	20-Aug-21	16-Nov-21	0												
Step 1		8	20-Aug-21	01-Sep-21	0												
3-230	Set Up Channelizing Devices and TCP	1	20-Aug-21	20-Aug-21	0												

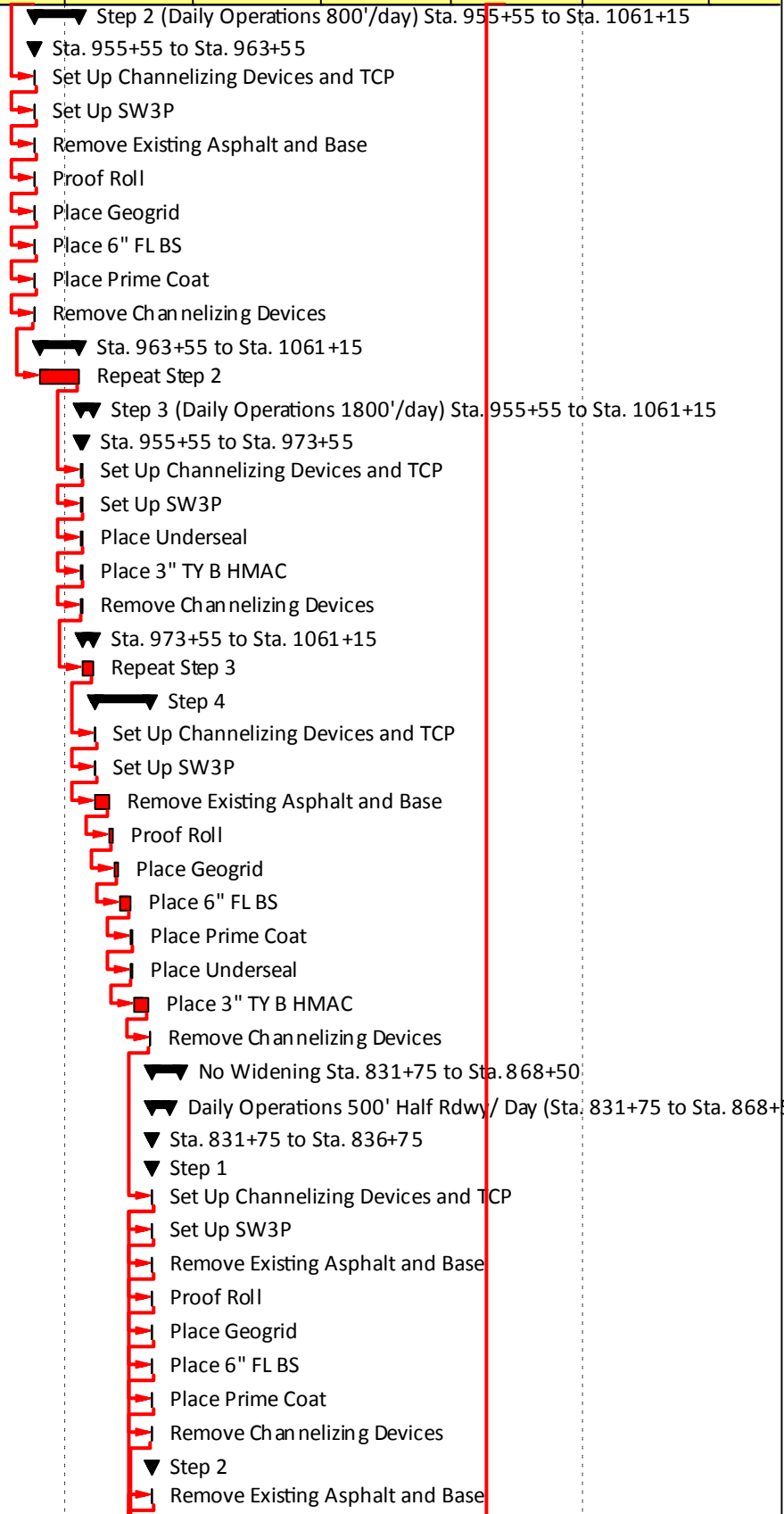


█ Actual Work ◆ Milestone
█ Remaining Work ◀ Summary
█ Critical Remaining Work

Activity ID	Activity Name	Duration	Start	Finish	Total Float	2020		2021				2022				2023	
								Q3	Q4	Q1	Q2	Q3	Q4	Q1	Q2	Q3	Q4
3-240	Set Up SW3P	1	20-Aug-21	20-Aug-21	0												
3-250	Excavate	2	20-Aug-21	23-Aug-21	0												
3-260	Proof Roll	1	24-Aug-21	24-Aug-21	0												
3-270	Place 12" Lime Treated Subgrade	5	24-Aug-21	31-Aug-21	0												
3-280	Remove Channelizing Devices	1	01-Sep-21	01-Sep-21	0												
Step 2 (Daily Operations 800'/day) Sta. 726+15 to Sta. 831+75		14	03-Sep-21	27-Sep-21	0												
Sta. 726+15 to Sta. 734+15		1	03-Sep-21	03-Sep-21	0												
3-290	Set Up Channelizing Devices and TCP	1	03-Sep-21	03-Sep-21	0												
3-300	Set Up SW3P	1	03-Sep-21	03-Sep-21	0												
3-310	Remove Existing Asphalt and Base	1	03-Sep-21	03-Sep-21	0												
3-320	Proof Roll	1	03-Sep-21	03-Sep-21	0												
3-330	Place Geogrid	1	03-Sep-21	03-Sep-21	0												
3-340	Place 6" FL BS	1	03-Sep-21	03-Sep-21	0												
3-350	Place Prime Coat	1	03-Sep-21	03-Sep-21	0												
3-360	Remove Channelizing Devices	1	03-Sep-21	03-Sep-21	0												
Sta. 734+15 to Sta. 831+75		13	07-Sep-21	27-Sep-21	0												
3-2 SB	Repeat Step 2	13	07-Sep-21	27-Sep-21	0												
Step 3 (Daily Operations 1800'/day) Sta. 726+15 to Sta. 831+75		6	28-Sep-21	07-Oct-21	0												
Sta. 726+15 to Sta. 744+15		1	28-Sep-21	28-Sep-21	0												
3-370	Set Up Channelizing Devices and TCP	1	28-Sep-21	28-Sep-21	0												
3-380	Set Up SW3P	1	28-Sep-21	28-Sep-21	0												
3-390	Place Underseal	1	28-Sep-21	28-Sep-21	0												
3-400	Place 3" TY B HMAC	1	28-Sep-21	28-Sep-21	0												
3-410	Remove Channelizing Devices	1	28-Sep-21	28-Sep-21	0												
Sta. 744+15 to Sta. 831+75		5	29-Sep-21	07-Oct-21	0												
3-3 SB	Repeat Step 3	5	29-Sep-21	07-Oct-21	0												
Step 4		23	08-Oct-21	16-Nov-21	0												
3-420	Set Up Channelizing Devices and TCP	1	08-Oct-21	08-Oct-21	0												
3-430	Set Up SW3P	1	08-Oct-21	08-Oct-21	0												
3-440	Remove Existing Asphalt and Base	6	08-Oct-21	18-Oct-21	0												
3-450	Proof Roll	2	19-Oct-21	21-Oct-21	0												
3-460	Place Geogrid	2	25-Oct-21	26-Oct-21	0												
3-470	Place 6" FL BS	5	27-Oct-21	02-Nov-21	0												
3-480	Place Prime Coat	1	03-Nov-21	03-Nov-21	0												
3-490	Place Underseal	2	03-Nov-21	05-Nov-21	0												
3-495	Place 3" TY B HMAC	5	08-Nov-21	15-Nov-21	0												
3-500	Remove Channelizing Devices	1	16-Nov-21	16-Nov-21	0												
NB Widening Sta. 955+55 to Sta. 1061+15		51	18-Nov-21	01-Mar-22	0												
Step 1		8	18-Nov-21	09-Dec-21	0												
3-510	Set Up Channelizing Devices and TCP	1	18-Nov-21	18-Nov-21	0												
3-520	Set Up SW3P	1	18-Nov-21	18-Nov-21	0												
3-530	Excavate	2	18-Nov-21	19-Nov-21	0												
3-540	Proof Roll	1	29-Nov-21	29-Nov-21	0												
3-550	Remove Channelizing Devices	1	09-Dec-21	09-Dec-21	0												
3-560	Place 12" Lime Treated Subgrade	5	29-Nov-21	07-Dec-21	0												

█ Actual Work ◆ Milestone
█ Remaining Work ◀ Summary
█ Critical Remaining Work

Activity ID	Activity Name	Duration	Start	Finish	Total Float	2020		2021				2022				2023							
								Q3	Q4	Q1	Q2	Q3	Q4	Q1	Q2	Q3	Q4	Q1	Q2				
Step 2 (Daily Operations 800'/day) Sta. 955+55 to Sta. 1061+15						14	10-Dec-21	10-Jan-22	0														
Sta. 955+55 to Sta. 963+55						1	10-Dec-21	10-Dec-21	0														
3-570	Set Up Channelizing Devices and TCP	1	10-Dec-21	10-Dec-21	0																		
3-580	Set Up SW3P	1	10-Dec-21	10-Dec-21	0																		
3-590	Remove Existing Asphalt and Base	1	10-Dec-21	10-Dec-21	0																		
3-600	Proof Roll	1	10-Dec-21	10-Dec-21	0																		
3-610	Place Geogrid	1	10-Dec-21	10-Dec-21	0																		
3-620	Place 6" FL BS	1	10-Dec-21	10-Dec-21	0																		
3-630	Place Prime Coat	1	10-Dec-21	10-Dec-21	0																		
3-640	Remove Channelizing Devices	1	10-Dec-21	10-Dec-21	0																		
Sta. 963+55 to Sta. 1061+15						13	13-Dec-21	10-Jan-22	0														
3-2 NB	Repeat Step 2	13	13-Dec-21	10-Jan-22	0																		
Step 3 (Daily Operations 1800'/day) Sta. 955+55 to Sta. 1061+15						6	12-Jan-22	20-Jan-22	0														
Sta. 955+55 to Sta. 973+55						1	12-Jan-22	12-Jan-22	0														
3-650	Set Up Channelizing Devices and TCP	1	12-Jan-22	12-Jan-22	0																		
3-660	Set Up SW3P	1	12-Jan-22	12-Jan-22	0																		
3-670	Place Underseal	1	12-Jan-22	12-Jan-22	0																		
3-680	Place 3" TY B HMAC	1	12-Jan-22	12-Jan-22	0																		
3-690	Remove Channelizing Devices	1	12-Jan-22	12-Jan-22	0																		
Sta. 973+55 to Sta. 1061+15						5	13-Jan-22	20-Jan-22	0														
3-3 NB	Repeat Step 3	5	13-Jan-22	20-Jan-22	0																		
Step 4						23	21-Jan-22	01-Mar-22	0														
3-700	Set Up Channelizing Devices and TCP	1	21-Jan-22	21-Jan-22	0																		
3-710	Set Up SW3P	1	21-Jan-22	21-Jan-22	0																		
3-720	Remove Existing Asphalt and Base	6	21-Jan-22	31-Jan-22	0																		
3-730	Proof Roll	2	01-Feb-22	03-Feb-22	0																		
3-740	Place Geogrid	2	04-Feb-22	07-Feb-22	0																		
3-750	Place 6" FL BS	5	08-Feb-22	15-Feb-22	0																		
3-760	Place Prime Coat	1	16-Feb-22	16-Feb-22	0																		
3-770	Place Underseal	2	16-Feb-22	17-Feb-22	0																		
3-780	Place 3" TY B HMAC	5	18-Feb-22	28-Feb-22	0																		
3-789	Remove Channelizing Devices	1	01-Mar-22	01-Mar-22	0																		
No Widening Sta. 831+75 to Sta. 868+50						12	03-Mar-22	23-Mar-22	0														
Daily Operations 500' Half Rdwy/ Day (Sta. 831+75 to Sta. 868+50)						8	03-Mar-22	15-Mar-22	0														
Sta. 831+75 to Sta. 836+75						1	03-Mar-22	03-Mar-22	0														
Step 1						1	03-Mar-22	03-Mar-22	0														
3-9	Set Up Channelizing Devices and TCP	1	03-Mar-22	03-Mar-22	0																		
3-9	Set Up SW3P	1	03-Mar-22	03-Mar-22	0																		
3-9	Remove Existing Asphalt and Base	1	03-Mar-22	03-Mar-22	0																		
3-9	Proof Roll	1	03-Mar-22	03-Mar-22	0																		
3-9	Place Geogrid	1	03-Mar-22	03-Mar-22	0																		
3-9	Place 6" FL BS	1	03-Mar-22	03-Mar-22	0																		
3-9	Place Prime Coat	1	03-Mar-22	03-Mar-22	0																		
3-9	Remove Channelizing Devices	1	03-Mar-22	03-Mar-22	0																		
Step 2						1	03-Mar-22	03-Mar-22	0														
3-1	Remove Existing Asphalt and Base	1	03-Mar-22	03-Mar-22	0																		



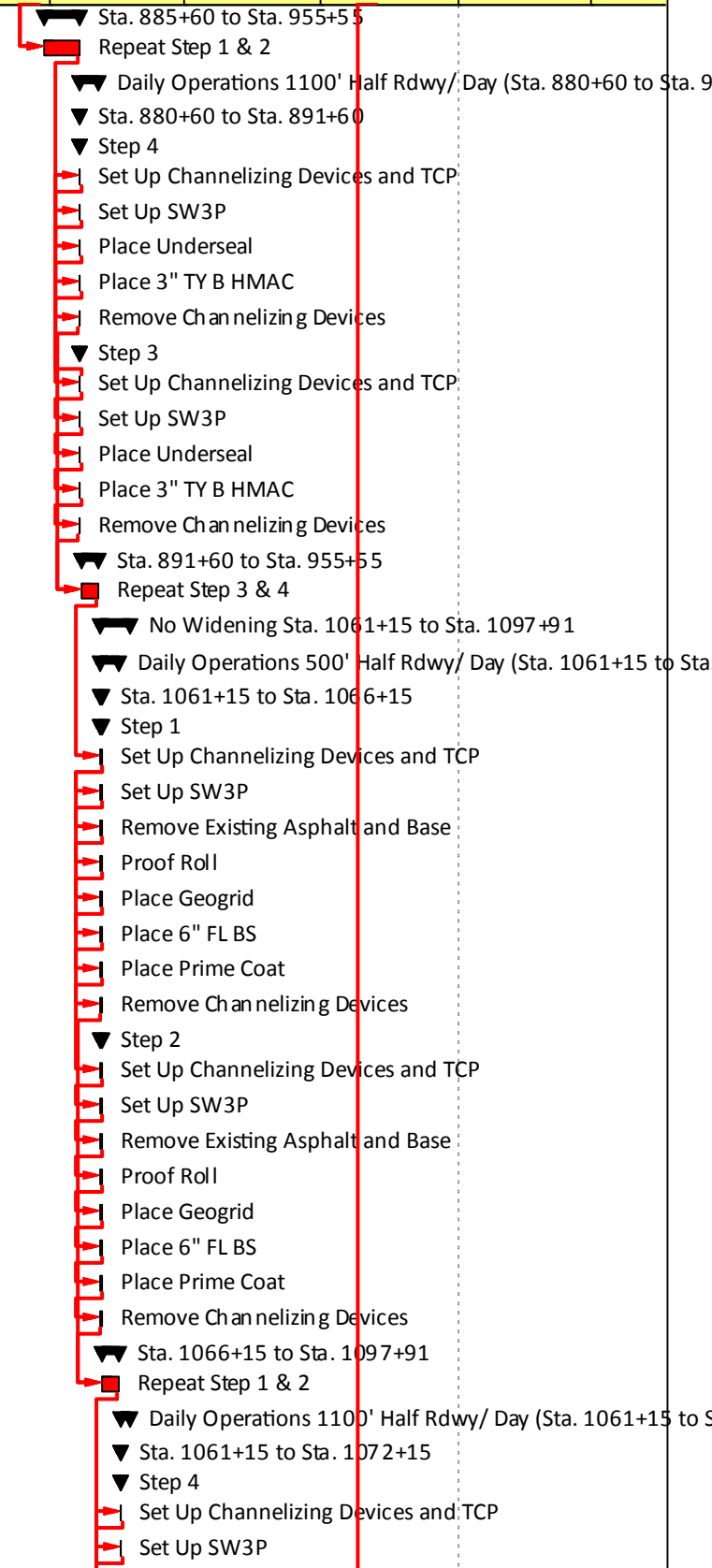
█ Actual Work ◆ Milestone
█ Remaining Work ◀ Summary
█ Critical Remaining Work

Activity ID	Activity Name	Duration	Start	Finish	Total Float	2020		2021				2022				2023	
						Q3	Q4	Q1	Q2	Q3	Q4	Q1	Q2	Q3	Q4	Q1	Q2
3-1	Proof Roll	1	03-Mar-22	03-Mar-22	0												
3-1	Place Geogrid	1	03-Mar-22	03-Mar-22	0												
3-1	Place 6" FL BS	1	03-Mar-22	03-Mar-22	0												
3-1	Place Prime Coat	1	03-Mar-22	03-Mar-22	0												
3-1	Remove Channelizing Devices	1	03-Mar-22	03-Mar-22	0												
3-9	Set Up Channelizing Devices and TCP	1	03-Mar-22	03-Mar-22	0												
3-9	Set Up SW3P	1	03-Mar-22	03-Mar-22	0												
Sta. 836+75 to Sta. 868+50		7	04-Mar-22	15-Mar-22	0												
3-1-2	Repeat Step 1 & 2	7	04-Mar-22	15-Mar-22	0												
Daily Operations 1100' Half Rdwy/ Day (Sta. 831+75 to Sta. 868+50)		4	17-Mar-22	23-Mar-22	0												
Sta. 831+75 to Sta. 842+75		1	17-Mar-22	17-Mar-22	0												
Step 4		1	17-Mar-22	17-Mar-22	0												
3-1	Set Up Channelizing Devices and TCP	1	17-Mar-22	17-Mar-22	0												
3-1	Set Up SW3P	1	17-Mar-22	17-Mar-22	0												
3-1	Place Underseal	1	17-Mar-22	17-Mar-22	0												
3-1	Place 3" TY B HMAC	1	17-Mar-22	17-Mar-22	0												
3-1	Remove Channelizing Devices	1	17-Mar-22	17-Mar-22	0												
Step 3		1	17-Mar-22	17-Mar-22	0												
3-1	Set Up Channelizing Devices and TCP	1	17-Mar-22	17-Mar-22	0												
3-1	Set Up SW3P	1	17-Mar-22	17-Mar-22	0												
3-1	Place Underseal	1	17-Mar-22	17-Mar-22	0												
3-1	Place 3" TY B HMAC	1	17-Mar-22	17-Mar-22	0												
3-1	Remove Channelizing Devices	1	17-Mar-22	17-Mar-22	0												
Sta. 842+75 to Sta. 868+50		3	18-Mar-22	23-Mar-22	0												
3-3-4	Repeat Step 3 & 4	3	18-Mar-22	23-Mar-22	0												
No Widening Sta. 880+60 to Sta. 955+55		22	25-Mar-22	03-May-22	0												
Daily Operations 500' Half Rdwy/ Day (Sta. 880+60 to Sta. 955+55)		15	25-Mar-22	20-Apr-22	0												
Sta. 880+60 to Sta. 885+60		1	25-Mar-22	25-Mar-22	0												
Step 1		1	25-Mar-22	25-Mar-22	0												
3-1	Set Up Channelizing Devices and TCP	1	25-Mar-22	25-Mar-22	0												
3-1	Set Up SW3P	1	25-Mar-22	25-Mar-22	0												
3-1	Remove Existing Asphalt and Base	1	25-Mar-22	25-Mar-22	0												
3-1	Proof Roll	1	25-Mar-22	25-Mar-22	0												
3-1	Place Geogrid	1	25-Mar-22	25-Mar-22	0												
3-1	Place 6" FL BS	1	25-Mar-22	25-Mar-22	0												
3-2	Place Prime Coat	1	25-Mar-22	25-Mar-22	0												
3-2	Remove Channelizing Devices	1	25-Mar-22	25-Mar-22	0												
Step 2		1	25-Mar-22	25-Mar-22	0												
3-2	Set Up Channelizing Devices and TCP	1	25-Mar-22	25-Mar-22	0												
3-2	Set Up SW3P	1	25-Mar-22	25-Mar-22	0												
3-2	Remove Existing Asphalt and Base	1	25-Mar-22	25-Mar-22	0												
3-2	Proof Roll	1	25-Mar-22	25-Mar-22	0												
3-2	Place Geogrid	1	25-Mar-22	25-Mar-22	0												
3-2	Place 6" FL BS	1	25-Mar-22	25-Mar-22	0												
3-2	Place Prime Coat	1	25-Mar-22	25-Mar-22	0												
3-2	Remove Channelizing Devices	1	25-Mar-22	25-Mar-22	0												

█ Actual Work ◆ Milestone
█ Remaining Work ◀ Summary
█ Critical Remaining Work

Project Duration: 29 months
 Standard Workweek. Average 17 work days per month

Activity ID	Activity Name	Duration	Start	Finish	Total Float	2020		2021				2022				2023	
							Q3	Q4	Q1	Q2	Q3	Q4	Q1	Q2	Q3	Q4	Q1
	Sta. 885+60 to Sta. 955+55	14	28-Mar-22	20-Apr-22	0												
3-1-12	Repeat Step 1 & 2	14	28-Mar-22	20-Apr-22	0												
	Daily Operations 1100' Half Rdwy/ Day (Sta. 880+60 to Sta. 955+55)	7	21-Apr-22	03-May-22	0												
	Sta. 880+60 to Sta. 891+60	1	21-Apr-22	21-Apr-22	0												
	Step 4	1	21-Apr-22	21-Apr-22	0												
3-2	Set Up Channelizing Devices and TCP	1	21-Apr-22	21-Apr-22	0												
3-2	Set Up SW3P	1	21-Apr-22	21-Apr-22	0												
3-2	Place Underseal	1	21-Apr-22	21-Apr-22	0												
3-2	Place 3" TY B HMAC	1	21-Apr-22	21-Apr-22	0												
3-2	Remove Channelizing Devices	1	21-Apr-22	21-Apr-22	0												
	Step 3	1	21-Apr-22	21-Apr-22	0												
3-2	Set Up Channelizing Devices and TCP	1	21-Apr-22	21-Apr-22	0												
3-2	Set Up SW3P	1	21-Apr-22	21-Apr-22	0												
3-2	Place Underseal	1	21-Apr-22	21-Apr-22	0												
3-2	Place 3" TY B HMAC	1	21-Apr-22	21-Apr-22	0												
3-2	Remove Channelizing Devices	1	21-Apr-22	21-Apr-22	0												
	Sta. 891+60 to Sta. 955+55	6	22-Apr-22	03-May-22	0												
3-3-14	Repeat Step 3 & 4	6	22-Apr-22	03-May-22	0												
	No Widening Sta. 1061+15 to Sta. 1097+91	12	05-May-22	24-May-22	0												
	Daily Operations 500' Half Rdwy/ Day (Sta. 1061+15 to Sta. 1097+91)	8	05-May-22	17-May-22	0												
	Sta. 1061+15 to Sta. 1066+15	1	05-May-22	05-May-22	0												
	Step 1	1	05-May-22	05-May-22	0												
3-2	Set Up Channelizing Devices and TCP	1	05-May-22	05-May-22	0												
3-2	Set Up SW3P	1	05-May-22	05-May-22	0												
3-2	Remove Existing Asphalt and Base	1	05-May-22	05-May-22	0												
3-2	Proof Roll	1	05-May-22	05-May-22	0												
3-2	Place Geogrid	1	05-May-22	05-May-22	0												
3-2	Place 6" FL BS	1	05-May-22	05-May-22	0												
3-2	Place Prime Coat	1	05-May-22	05-May-22	0												
3-2	Remove Channelizing Devices	1	05-May-22	05-May-22	0												
	Step 2	1	05-May-22	05-May-22	0												
3-2	Set Up Channelizing Devices and TCP	1	05-May-22	05-May-22	0												
3-2	Set Up SW3P	1	05-May-22	05-May-22	0												
3-2	Remove Existing Asphalt and Base	1	05-May-22	05-May-22	0												
3-2	Proof Roll	1	05-May-22	05-May-22	0												
3-2	Place Geogrid	1	05-May-22	05-May-22	0												
3-2	Place 6" FL BS	1	05-May-22	05-May-22	0												
3-2	Place Prime Coat	1	05-May-22	05-May-22	0												
3-2	Remove Channelizing Devices	1	05-May-22	05-May-22	0												
	Sta. 1066+15 to Sta. 1097+91	7	06-May-22	17-May-22	0												
3-1-22	Repeat Step 1 & 2	7	06-May-22	17-May-22	0												
	Daily Operations 1100' Half Rdwy/ Day (Sta. 1061+15 to Sta. 1097+91)	4	18-May-22	24-May-22	0												
	Sta. 1061+15 to Sta. 1072+15	1	18-May-22	18-May-22	0												
	Step 4	1	18-May-22	18-May-22	0												
3-2	Set Up Channelizing Devices and TCP	1	18-May-22	18-May-22	0												
3-2	Set Up SW3P	1	18-May-22	18-May-22	0												



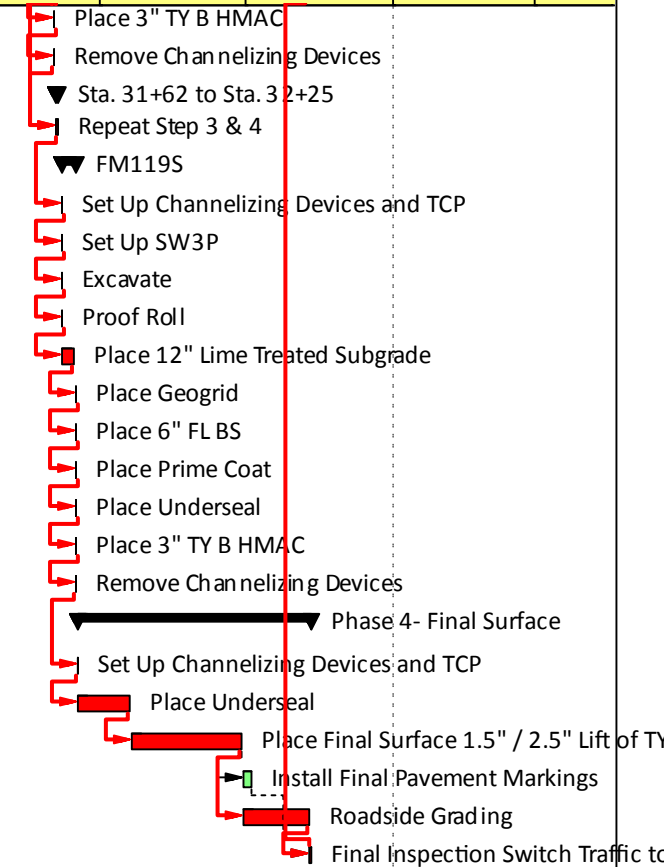
■ Actual Work ◆ Milestone
■ Remaining Work ▼ Summary
■ Critical Remaining Work

Activity ID	Activity Name	Duration	Start	Finish	Total Float	2020		2021				2022				2023	
								Q3	Q4	Q1	Q2	Q3	Q4	Q1	Q2	Q3	Q4
3-2	Place Underseal	1	18-May-22	18-May-22	0												
3-2	Place 3" TY B HMAC	1	18-May-22	18-May-22	0												
3-2	Remove Channelizing Devices	1	18-May-22	18-May-22	0												
	Step 3	1	18-May-22	18-May-22	0												
3-2	Set Up Channelizing Devices and TCP	1	18-May-22	18-May-22	0												
3-2	Set Up SW3P	1	18-May-22	18-May-22	0												
3-2	Place Underseal	1	18-May-22	18-May-22	0												
3-2	Place 3" TY B HMAC	1	18-May-22	18-May-22	0												
3-2	Remove Channelizing Devices	1	18-May-22	18-May-22	0												
	Sta. 1072+15 to Sta. 1097+91	3	20-May-22	24-May-22	0												
3-3-24	Repeat Step 3 & 4	3	20-May-22	24-May-22	0												
	No Widening FM119S Sta. 20+62 to Sta. 32+25	5	26-May-22	03-Jun-22	0												
	Daily Operations 500' Half Rdwy/ Day (Sta. 20+62 to Sta. 32+25)	3	26-May-22	31-May-22	0												
	Sta. 20+62 to Sta. 25+62	1	26-May-22	26-May-22	0												
	Step 1	1	26-May-22	26-May-22	0												
3-2	Set Up Channelizing Devices and TCP	1	26-May-22	26-May-22	0												
3-2	Set Up SW3P	1	26-May-22	26-May-22	0												
3-2	Remove Existing Asphalt and Base	1	26-May-22	26-May-22	0												
3-2	Proof Roll	1	26-May-22	26-May-22	0												
3-2	Place Geogrid	1	26-May-22	26-May-22	0												
3-2	Place 6" FL BS	1	26-May-22	26-May-22	0												
3-2	Place Prime Coat	1	26-May-22	26-May-22	0												
3-2	Remove Channelizing Devices	1	26-May-22	26-May-22	0												
	Step 2	1	26-May-22	26-May-22	0												
3-2	Set Up Channelizing Devices and TCP	1	26-May-22	26-May-22	0												
3-2	Set Up SW3P	1	26-May-22	26-May-22	0												
3-2	Remove Existing Asphalt and Base	1	26-May-22	26-May-22	0												
3-2	Proof Roll	1	26-May-22	26-May-22	0												
3-2	Place Geogrid	1	26-May-22	26-May-22	0												
3-2	Place 6" FL BS	1	26-May-22	26-May-22	0												
3-2	Place Prime Coat	1	26-May-22	26-May-22	0												
3-2	Remove Channelizing Devices	1	26-May-22	26-May-22	0												
	Sta. 25+62 to Sta. 32+25	2	27-May-22	31-May-22	0												
3-1-32	Repeat Step 1 & 2	2	27-May-22	31-May-22	0												
	Daily Operations 1100' Half Rdwy/ Day (Sta. 20+62 to Sta. 32+25)	2	01-Jun-22	03-Jun-22	0												
	Sta. 20+62 to Sta. 31+62	1	01-Jun-22	01-Jun-22	0												
	Step 4	1	01-Jun-22	01-Jun-22	0												
3-2	Set Up Channelizing Devices and TCP	1	01-Jun-22	01-Jun-22	0												
3-2	Set Up SW3P	1	01-Jun-22	01-Jun-22	0												
3-2	Place Underseal	1	01-Jun-22	01-Jun-22	0												
3-2	Place 3" TY B HMAC	1	01-Jun-22	01-Jun-22	0												
3-2	Remove Channelizing Devices	1	01-Jun-22	01-Jun-22	0												
	Step 3	1	01-Jun-22	01-Jun-22	0												
3-2	Set Up Channelizing Devices and TCP	1	01-Jun-22	01-Jun-22	0												
3-2	Set Up SW3P	1	01-Jun-22	01-Jun-22	0												
3-2	Place Underseal	1	01-Jun-22	01-Jun-22	0												

█ Actual Work ◆ Milestone
█ Remaining Work ◀ Summary
█ Critical Remaining Work

Project Duration: 29 months
 Standard Workweek. Average 17 work days per month

Activity ID	Activity Name	Duration	Start	Finish	Total Float	2020				2021				2022				2023	
						Q3	Q4	Q1	Q2	Q3	Q4	Q1	Q2	Q3	Q4	Q1	Q2		
3-2	Place 3" TY B HMAC	1	01-Jun-22	01-Jun-22	0														
3-2	Remove Channelizing Devices	1	01-Jun-22	01-Jun-22	0														
Sta. 31+62 to Sta. 32+25		1	03-Jun-22	03-Jun-22	0														
3-3-34	Repeat Step 3 & 4	1	03-Jun-22	03-Jun-22	0														
FM119S		6	06-Jun-22	15-Jun-22	0														
3-790	Set Up Channelizing Devices and TCP	1	06-Jun-22	06-Jun-22	0														
3-800	Set Up SW3P	1	06-Jun-22	06-Jun-22	0														
3-810	Excavate	1	06-Jun-22	06-Jun-22	0														
3-820	Proof Roll	1	06-Jun-22	06-Jun-22	0														
3-830	Place 12" Lime Treated Subgrade	5	06-Jun-22	13-Jun-22	0														
3-840	Place Geogrid	1	15-Jun-22	15-Jun-22	0														
3-850	Place 6" FLBS	1	15-Jun-22	15-Jun-22	0														
3-860	Place Prime Coat	1	15-Jun-22	15-Jun-22	0														
3-870	Place Underseal	1	15-Jun-22	15-Jun-22	0														
3-880	Place 3" TY B HMAC	1	15-Jun-22	15-Jun-22	0														
3-890	Remove Channelizing Devices	1	15-Jun-22	15-Jun-22	0														
Phase 4- Final Surface		84	16-Jun-22	10-Nov-22	0														
4-010	Set Up Channelizing Devices and TCP	1	16-Jun-22	16-Jun-22	0														
4-020	Place Underseal	19	17-Jun-22	19-Jul-22	0														
4-030	Place Final Surface 1.5" / 2.5" Lift of TY D HMAC	38	21-Jul-22	27-Sep-22	0														
4-040	Install Final Pavement Markings	4	29-Sep-22	04-Oct-22	21														
4-050	Roadside Grading	25	29-Sep-22	09-Nov-22	0														
4-060	Final Inspection Switch Traffic to Final Configuration	1	10-Nov-22	10-Nov-22	0														



█ Actual Work ◆ Milestone
█ Remaining Work ◀ Summary
█ Critical Remaining Work