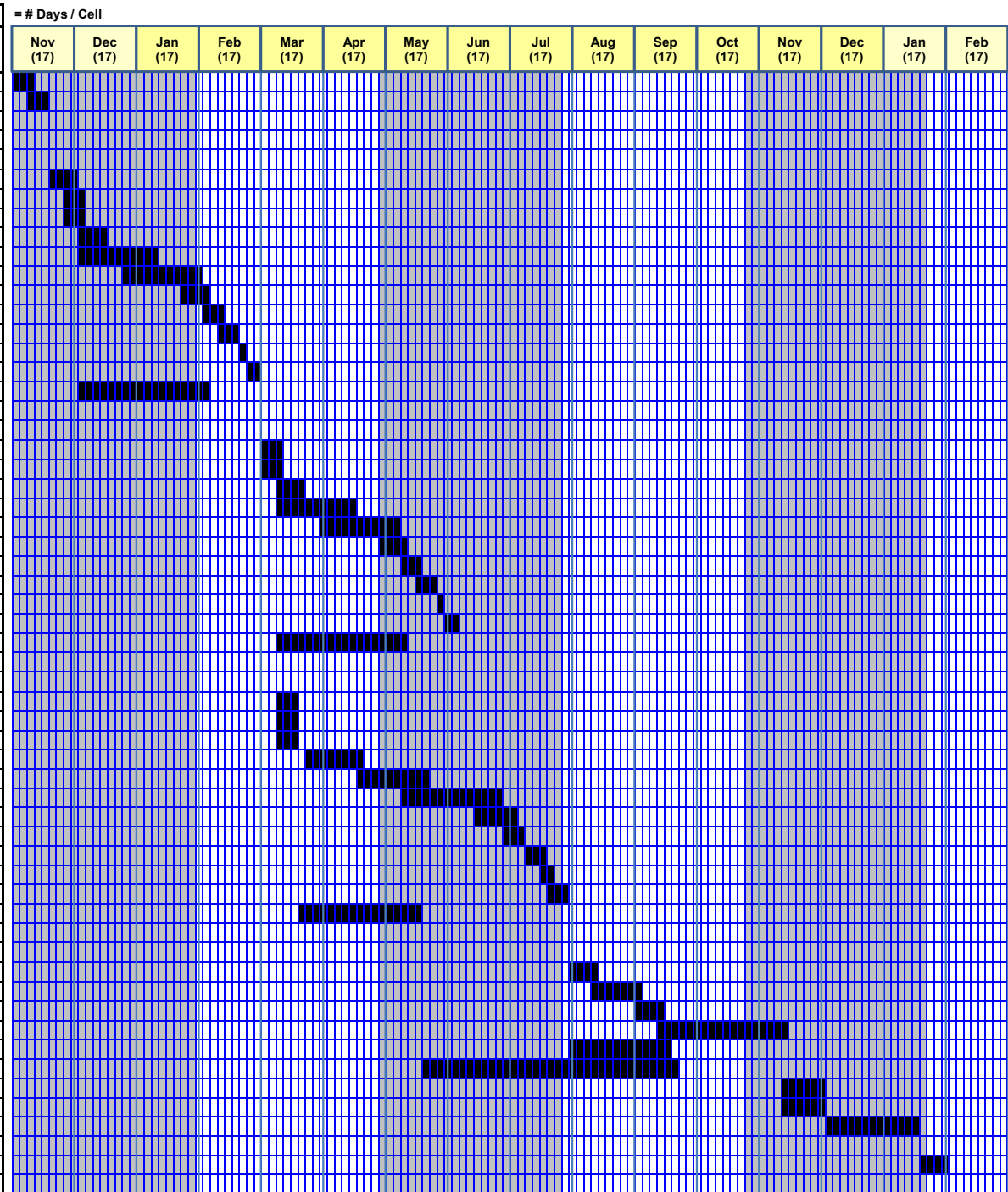


**Contract Time Estimate**

Rd: FM 624 County: Nueces  
 CSJ: 0989-02-054, etc Project: F 2022(932)

TASK #	Description	Quantity	Unit	Daily Rate	Duration	Pred Task	% Compl	Pred Task	% Compl	Pred Task	% Compl	Start Day	Finish Day
1	INITIAL BARRICADES SETUP	5	DAYS	1	5							1	5
2	SETUP SW3P	5	DAYS	1	5	1	100					6	10
3													
4													
5	<b>PHASE 1</b>												
6	PLANING	48,440	SY	7500	7	2	100					11	17
7	TCP SETUP	5	DAYS	1	5	6	50					15	19
8	TEMP STRIPING	5	DAYS	1	5	7	0					15	19
9	EMBANKMENT	3,433	CY	500	7	8	100					20	26
10	EXCAVATION	10,469	CY	500	21	8	100					20	40
11	LIME TREAT SUBGRADE	10,975	SY	500	22	10	50	9	50			31	52
12	FLEXIBLE BASE	2,201	CY	350	7	11	75					48	54
13	PRIME COAT	3,618	GAL	1000	4	12	75					54	57
14	PRIME COAT CURE	5	DAYS	1	5	13	100					58	62
15	UNDERSEAL	8,645	SY	6000	2	14	100					63	64
16	HM TY-D	951	TONS	300	4	15	100					65	68
17	CULVERT EXTENSIONS	34	DAYS	1	34	8	100					20	53
18													
19	<b>PHASE 2A WIDENING</b>												
20	TCP SETUP	5	DAYS	1	5	16	100					69	73
21	TEMP STRIPING	5	DAYS	1	5	20	0					69	73
22	EMBANKMENT	3,433	CY	500	7	21	100					74	80
23	EXCAVATION	10,469	CY	500	21	21	100					74	94
24	LIME TREAT SUBGRADE	10,975	SY	500	22	23	50					85	106
25	FLEXIBLE BASE	2,201	CY	350	7	24	75					102	108
26	PRIME COAT	3,618	GAL	1000	4	25	75					108	111
27	PRIME COAT CURE	5	DAYS	1	5	26	100					112	116
28	UNDERSEAL	8,645	SY	6000	2	27	100					117	118
29	HM TY-D	951	TONS	300	4	28	100					119	122
30	CULVERT EXTENSIONS	34	DAYS	1	34	21	100					74	107
31													
32	<b>PHASE 2B WIDENING</b>												
33	TCP SETUP	5	DAYS	1	5	20	100					74	78
34	PLANING	28,340	SY	7500	4	33	0					74	77
35	TEMP STRIPING	5	DAYS	1	5	34	0					74	78
36	EMBANKMENT	7,852	CY	500	16	35	100	22	100			81	96
37	EXCAVATION	9,264	CY	500	19	35	100	23	100			95	113
38	LIME TREAT SUBGRADE	13,483	SY	500	27	37	50	24	100			107	133
39	FLEXIBLE BASE	3,198	CY	350	10	38	75	25	100			128	137
40	PRIME COAT	4,260	GAL	1000	5	39	75	26	100			136	140
41	PRIME COAT CURE	5	DAYS	1	5	40	100					141	145
42	UNDERSEAL	8,645	SY	6000	2	41	100	28	100			146	147
43	HM TY-D	1,317	TONS	300	5	42	100	29	100			148	152
44	CULVERT EXTENSIONS	34	DAYS	1	34	35	100					79	112
45													
46	<b>FINAL SURFACE</b>												
47	FINAL PAVEMENT REPAIR	3,445	SY	500	7	43	100					153	159
48	PLANING	89,323	SY	7500	12	47	100					160	171
49	UNDERSEAL	199,651	SY	36000	6	48	100					172	177
50	OVERLAY	20,010	TONS	600	34	49	100					178	211
51	DRIVEWAYS	5,544	SY	200	28	43	100					153	180
52	TREE REMOVAL/SEEDING	68	DAYS	1	68	37	100					114	181
53	FINAL STRIPING	153,012	LF	15000	11	50	100					212	222
54	FINAL SIGNING	10	DAYS	1	10	50	100					212	221
55	RUMBLE STRIPS	383,981	LF	15000	26	53	100					223	248
56													
57	FINAL CLEANUP	7	DAYS	1	7	55	100					249	255
58													



Working days = 255 days  
 @ 17 days/month  
 (255 days) / (17 days/month) = 15 months  
 15 months of barricades  
 Estimated completion date: February 2024