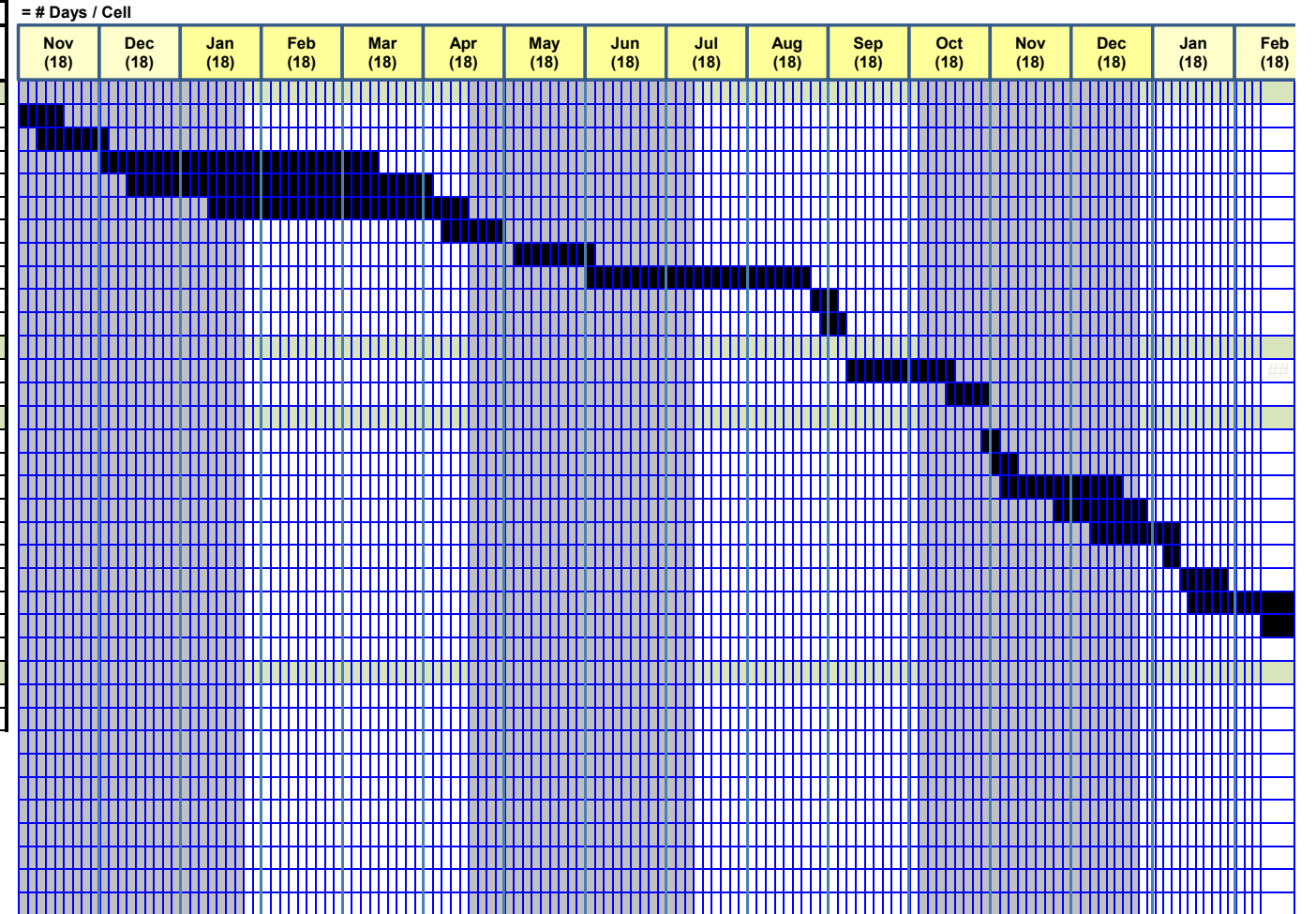


**Contract Time Estimate**

Rd: US 281  
CSJ: 0249-08-042, etc.

County: PALO PINTO  
Project: US 281

TASK #	Description	Quantity	Unit	Daily Rate	Duration	Pred Task	% Comp	Pred Task	% Comp	Pred Task	% Comp	Start Day	Finish Day
1	<b>PHASE 1 (NORTH OF MINERAL WELLS)</b>				0							1	1
2	Set-up Barricades & Temp Erosion Control	10	DAY	1	10	1	100					1	10
3	Prep ROW	423	STA	30	15	2	35					5	19
4	Construct Excavation & Embankment Construct culvert improvements	48,287	CY	810	60	3	100					20	79
5	Construct 8" Lime Treat Subgrade	53,416	SY	815	66	4	10					26	91
6	Construct 12" Flex Base	17,022	CY	295	58	5	25					43	100
7	Construct Prime on Flex Base	13,064	GAL	1100	12	6	90					96	107
8	Construct Level-up Existing Shoulder	5,273	TON	300	18	7	125					111	128
9	Construct 8" HMA TY-B	20,766	TON	420	50	8	85					127	176
10	Construct Seal Coat	66,480	GAL	15000	5	9	100					177	181
11	Place Work Zone Pavement Markings, Seeding & Signs	1	LS	0.2	5	10	60					180	184
12	<b>PHASE 2 (NORTH OF MINERAL WELLS)</b>				0							180	180
13	Construct 2" Superpave ACP	36,562	TON	1550	24	11	100					185	208
14	Place Final Pavement Markings	243,155	LF	32000	8	13	95					208	215
15	<b>PHASE 3 (SOUTH OF MINERAL WELLS)</b>				0							208	208
16	Set-up Barricades & Temp Erosion Control	3	DAY	1	3	14	100					216	218
17	Prep ROW	239	STA	50	5	16	60					218	222
18	Construct Excavation & Embankment Construct culvert improvements	21,867	CY	810	27	17	40					220	246
19	Construct 8" Lime Treat Subgrade	28,533	SY	1300	22	18	40					231	252
20	Construct 12" Flex Base	9,081	CY	470	20	19	40					240	259
21	Construct Prime on Flex Base	6,977	GAL	3000	3	20	90					258	260
22	Construct Level-up Existing Shoulder	7,059	TON	650	11	21	100					261	271
23	Construct 8" HMA TY-B	11,065	TON	620	18	22	20					264	281
24	Construct Seal Coat	41,163	GAL	21000	2	23	90					281	282
25	Place Work Zone Pavement Markings, Seeding & Signs	1	LS	0.5	2	24	150					284	285
26	<b>PHASE 4 (SOUTH OF MINERAL WELLS)</b>				0							284	284
27	Construct 2" Superpave ACP	22,639	TON	1300	18	25	100					286	303
28	Place Final Pavement Markings	174,770	LF	88000	2	27	90					303	304



304 working days

304 ÷ 18 = 17 months

17 × 256/12 = 363 contract days

