

FED. ROAD DIST. NO.	STATE	FEDERAL AID PROJECT NO.	SHEET NO.
6	TEXAS	1-820-4(43)422	1
STATE DIST. NO.	COUNTY	STATE CONTROL NO.	INVENTORY NO.
2	TARRANT	8-15-2	1-820

**STATE OF TEXAS
STATE HIGHWAY DEPARTMENT**

**PLAN OF PROPOSED
RIGHT OF WAY PROJECT**

INTERSTATE LOOP 820

TARRANT COUNTY

ACCOUNT NO. 9002-8-13

PROJECT NO. 1-820-4(43)422

**FROM: INT. HWY. 30 WEST OF FORT WORTH, SE
TO: INT. HWY. 20 S.W. OF FORT WORTH**

PLAN SCALE AS SHOWN
NET LENGTH OF PROJECT = 19,297.20 FT. = 3.655 MI.

PROJECT DESIGNATOR 7001



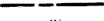
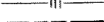
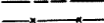
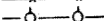
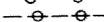

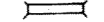


"FINAL MAP"

BEGIN ACCOUNT NO. 9002-8-15
BEGIN PROJECT NO. 1-820-4(109)471
STA. 128+41.96

BEGIN ACCOUNT NO. 9002-8-13
BEGIN PROJECT NO. 1-820-4(43)422
STA. 128+41.96

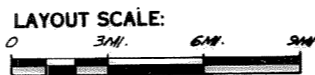
END ACCOUNT NO. 9002-8-13
END PROJECT NO. 1-820-4(43)422
STA. 270+50.98

STA. 270+50.98
BEGIN PROJECT NO. 1-20-4(38)428
BEGIN ACCOUNT NO. 9002-2-12

- CONVENTIONAL SIGNS
- RIGHT OF WAY LINE 
 - PROPERTY LINE 
 - COUNTY LINE 
 - CONTROL OF ACCESS LINE 
 - SURVEY LINE 
 - FENCE 
 - POWER LINE 
 - TELEPHONE OR TELEGRAPH 
 - RAILROAD 
 - BRIDGE OR CULVERT 
 - CITY LIMITS 



EQUATION: STA. 102+95.74 BACK =
STA. 103+00.00 FORWARD
LENGTH = 4.26 FT.





CORRECT: 6-2, 1981

B.P. Stewart
DISTRICT R.O.W. ENGINEER

APPROVED: 6-3, 1981

J.R. Stone
DISTRICT ENGINEER

DEPARTMENT OF COMMERCE BUREAU OF PUBLIC ROADS	
APPROVED: 	DATE: 
DIVISION ENGINEER	

BENJAMIN F. WICKSON SURVEY
ABST. NO. 1673

GEORGE WHITE SURVEY
ABST. NO. 1751

(1A)
 Richardson Hts. Inc. et al
 Channel Easement
 Vol. 1999 Page 181
 Rt. Sta. 106+69.59
 Part-1 1.023 Ac.
 Rt. Sta. 107+36.34
 Part-2 0.037 Ac.
 Lt. Sta. 105+83.46
 Part-3 0.650 Ac.
 Rt. Sta. 117+59.42
 Part-4 1.089 Ac.
 Rt. Sta. 117+61.96
 Part-5 1.246 Ac.
 Lt. Sta. 116+47.31
 Part-6 0.413 Ac.

(2)
 Texas Electric Service Co.
 Channel Easement
 U-6680
 Sta. 107+36.34
 0.207 Ac.

(2)
 Texas Electric Service Co.
 Joint Use Agreement
 U-6680
 Sta. 113+92± To Sta. 116+45±
 Part-1=2.404 Ac.
 Lt. Sta. 143+89.97
 Part-2=0.555 Ac.

(1A)
 Richardson Hts. Inc. et al
 Deed - 231
 Vol. 1999 Page 231
 Sta. 116+45± To Sta. 128+41±
 Part-1 11.986 Ac.
 Rt. Sta. 120+52.69 To Rt. Sta. 127+61.46
 Part-2 40.348 Ac.
 Remainder West Side=339 Ac.±
 East Side=141 Ac.±



FED. RD. DIV. NO.	STATE	FEDERAL PROJECT NO.	SHEET NO.
2	TEXAS	1-820-4(43)422	18
STATE DIST. NO.	COUNTY	CONT. SECT. JOB	HIGHWAY NO.
2	TARRANT	8 15 2	1002 LOOP 820

**B.B.B. & C. R.R. Co. SURVEY
ABST. 219**

Remainder = 112 Ac. ±

Remainder = 29 Ac. ±

Remainder = 22 Ac. ±

(B)
For Property Data
See Sheet No. 5



(1A)
(1E)
Part 1

(1B)
Part 1

(1A)
Part 2

(4A)

**WESTERN HILLS PHASE III
SECTION
BLOCK I**

**G. WHITE SURVEY
ABST. 1751**

(4A)
Richardson Hts, Inc. et al
Deed
Vol. 4999 Page 208
Sta. 127+60.36 To Sta. 147+35.50
19.870 Ac.
Remainder = 24 Ac. ±

Curve Data
R1. 131+77.31
A=09°35'14"
D=20°30'
R=11,459.16'
T=960.97'
L=1,917.44'

(1A) (1E)
For Property Data
See Sheet No. 1A



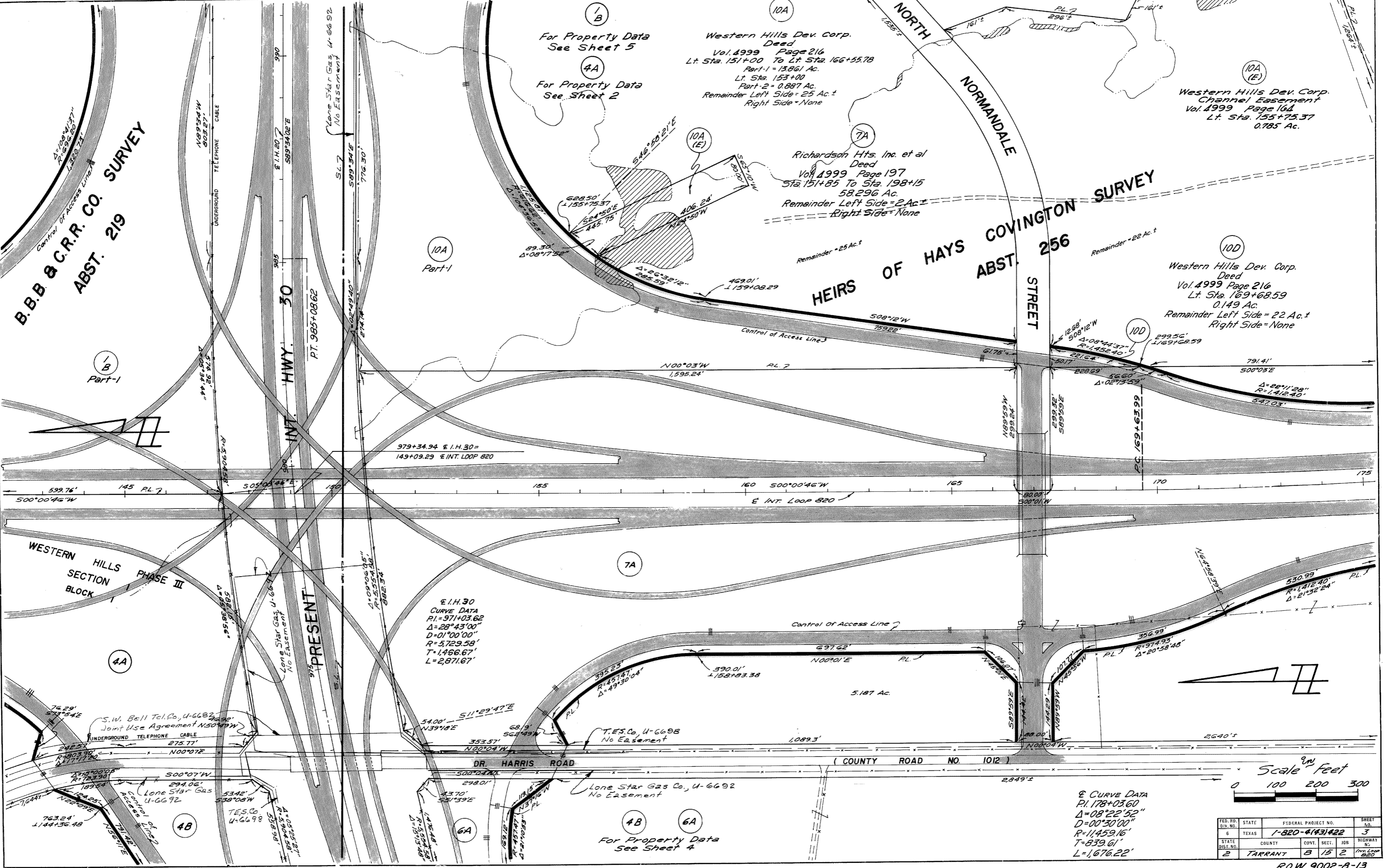
Scale in Feet
0 100 200 300

UNDERGROUND TELEPHONE CABLE
DR. HARRIS RD. (COUNTY ROAD NO. 1012)
7,585' ±
2,644' ±

FED. RD. DIV. NO.	STATE	FEDERAL PROJECT NO.	SHEET NO.
6	TEXAS	1-820-4(43)422	2
STATE DIST. NO.	COUNTY	CONT. SECT.	JOB
2	TARRANT	8 15 2	HWY. GROUP 820

B.B.B. & C.R.R. CO. SURVEY
ABST. 219

HEIRS OF HAYS COVINGTON SURVEY
ABST. 256



For Property Data See Sheet 5

For Property Data See Sheet 2

Western Hills Dev. Corp.
 Deed
 Vol. 4999 Page 216
 Lt. Sta. 151+00 To Lt. Sta. 166+55.78
 Part-1 = 13.861 Ac.
 Lt. Sta. 153+00
 Part-2 = 0.887 Ac.
 Remainder Left Side = 25 Ac.±
 Right Side = None

Western Hills Dev. Corp.
 Channel Easement
 Vol. 4999 Page 164
 Lt. Sta. 155+75.37
 0.785 Ac.

Richardson Hts. Inc. et al
 Deed
 Vol. 4999 Page 197
 Sta. 151+85 To Sta. 198+15
 58.296 Ac.
 Remainder Left Side = 2 Ac.±
 Right Side = None

Western Hills Dev. Corp.
 Deed
 Vol. 4999 Page 216
 Lt. Sta. 169+68.59
 0.149 Ac.
 Remainder Left Side = 22 Ac.±
 Right Side = None

10A Part-1

1/B Part-1

7A

4A

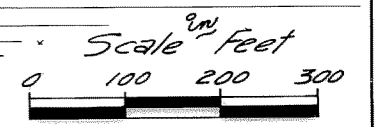
4B

6A

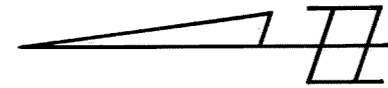
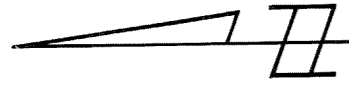
For Property Data See Sheet 4

Curve Data
 P.I. = 971+03.62
 Δ = 28°43'00"
 D = 01°00'00"
 R = 5,729.58'
 T = 1,466.67'
 L = 2,871.67'

Curve Data
 P.I. 178+03.60
 Δ = 08°22'52"
 D = 00°30'00"
 R = 1,459.16'
 T = 839.61'
 L = 1,676.22'



FED. NO.	STATE	FEDERAL PROJECT NO.	SHEET NO.
6	TEXAS	1-820-4143422	3
STATE DIST. NO.	COUNTY	COM. SECT. JOB	HIGHWAY NO.
2	TARRANT	B 15 2	INT. LOOP 820



4B

Richardson Hts. Inc. et al.
Deed
Vol. 4999 Page 208
Rt. Sta. 144+36.48
5.413 Ac.
Remainder = 1,464 Ac.±

5

Richardson Hts. Inc. et al.
Deed
Vol. 4999 Page 175
Rt. Sta. 151+49.67
0.931 Ac.
Remainder = 143 Ac.±

6A

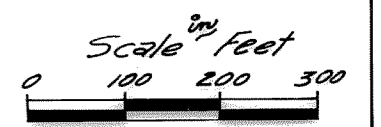
Richardson Hts. Inc. et al.
Deed
Vol. 4999 Page 191
Rt. Sta. 155+28.57
3.997 Ac.
Remainder = None

6B (E)

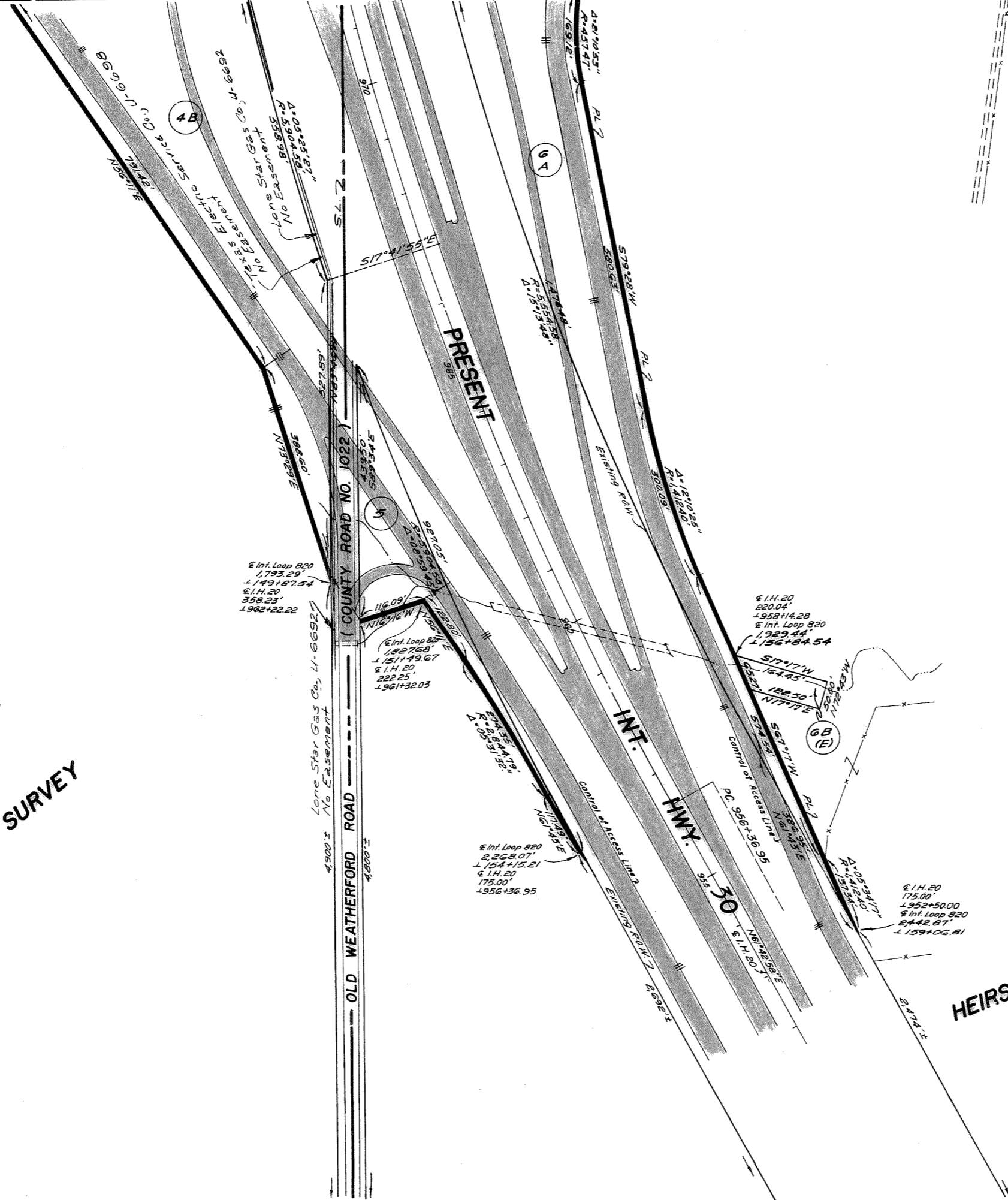
Henry H. Dickerson Jr. Trustee
Channel Easement
Vol. 5079 Page 383
Rt. Sta. 156+84.54
0.165 Ac.
Whole Property = 195 Ac.±

B.B.B. & C.R.R. CO. SURVEY
ABST. 219

HEIRS OF HAYS COVINGTON SURVEY
ABST. 256



FED. NO.	STATE	FEDERAL PROJECT NO.	SHEET NO.
6	TEXAS	1-820-4(83)422	4
STATE DIST. NO.	COUNTY	CONT. SECT. JOB	HIGHWAY NO.
2	TARRANT	B 15 2	1785



**B.B.B. & C.R.R. CO. SURVEY
ABST. 218**

**HEIRS OF HAYS COVINGTON SURVEY
WESTERN HILLS ADD'N.
SECTION 8
ABST. 256**

(100 E)
Western Hills Dev. Corp.
Channel Easement
Vol. 4999 Page 164
Lt. Sta. 154+84.27
0.012 Ac.

(100)
Western Hills Dev. Corp.
Deed
Vol. 4999 Page 216
Lt. Sta. 150+75.39
4.776 Ac.
Remainder = 7 Ac. ±

(8B)
Texas Electric Service Company
Joint Use Agreement
U-6698
Lt. Sta. 154+83.78
0.007 Ac.

(8B E)
Texas Electric Service Co.
Channel Easement
U-6698
Lt. Sta. 154+84.27
0.182 Ac.

(8A)
Texas Electric Service Co.
Joint Use Agreement
U-6698
Lt. Sta. 154+56.72
1.434 Ac.

(10A)
For Property Data
See Sheet 3

(1C)
Richardson Hts. Inc. et al
Deed
Vol. 4999 Page 197
Lt. Sta. 143+58.84
1.108 Ac.
Remainder = 2 Ac. ±

(3)
Richardson Hts. Inc.
Deed
Vol. 4999 Page 225
Lt. Sta. 147+24.75
2.574 Ac.
Remainder = 50 Ac. ±

(1B)
Richardson Hts. Inc. et al
Deed
Vol. 4999 Page 197
Sta. 128+30.19 to Sta. 147+33.55
Part-1 26.706 Ac.
Lt. Sta. 143+89.97
Part-2 1.587 Ac.
Remainder Left Side = 41 Ac. ±
Right Side = None

(2)
For Property Data
See Sheet 1B

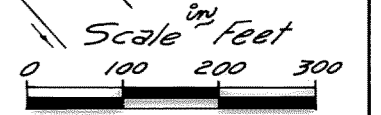
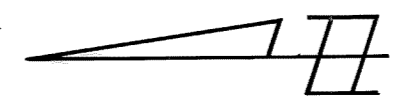
B.B.B. & C. RR. CO. SURVEY ABST. 219

INT. HWY. 30

DALE LANE

NORTH NORMANDALE STREET

CALMONT AVE.



FED. RD. DIV. NO.	STATE	FEDERAL PROJECT NO.	SHEET NO.
0	TEXAS	1-820-4(43)422	5
STATE DIST. NO.	COUNTY	CONT. SECT. JOB	HIGHWAY NO.
2	TARRANT	3 15 2	INT. LOOP 820

WESTERN HILLS ADDITION

SECTION 7

BLOCK 80
LOT A

BLOCK 84

LOT A

CHAMITA LANE

NORMANDALE STREET

WEST HEIRS OF HAYS COVINGTON SURVEY ABST. 256

BLOCK 86

LOT 2

LOT 3

(7B)
Western Hills Dev. Corp.
Deed
Vol. 1999 Page 170
Lt. Sta. 185+75.21
To Lt. Sta. 199+38.21
5.120 Ac.
Remainder = None

(7B)

City of Ft. Worth, U-6714
No Easement

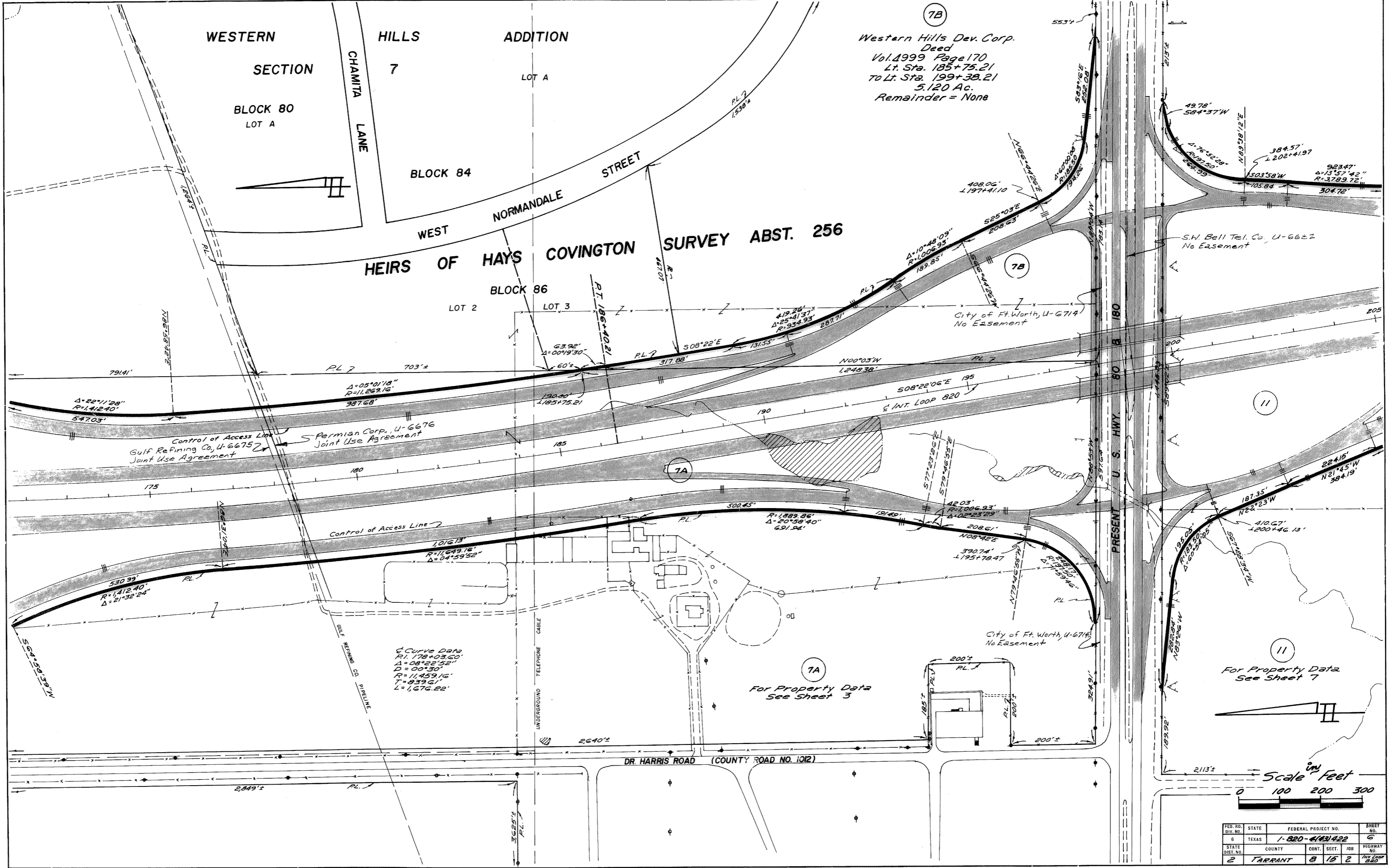
S.W. Bell Tel. Co. U-6622
No Easement

(11)

PRESENT U.S. HWY. 80 & 180

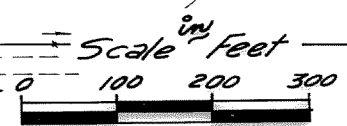
(11)

For Property Data
See Sheet 7

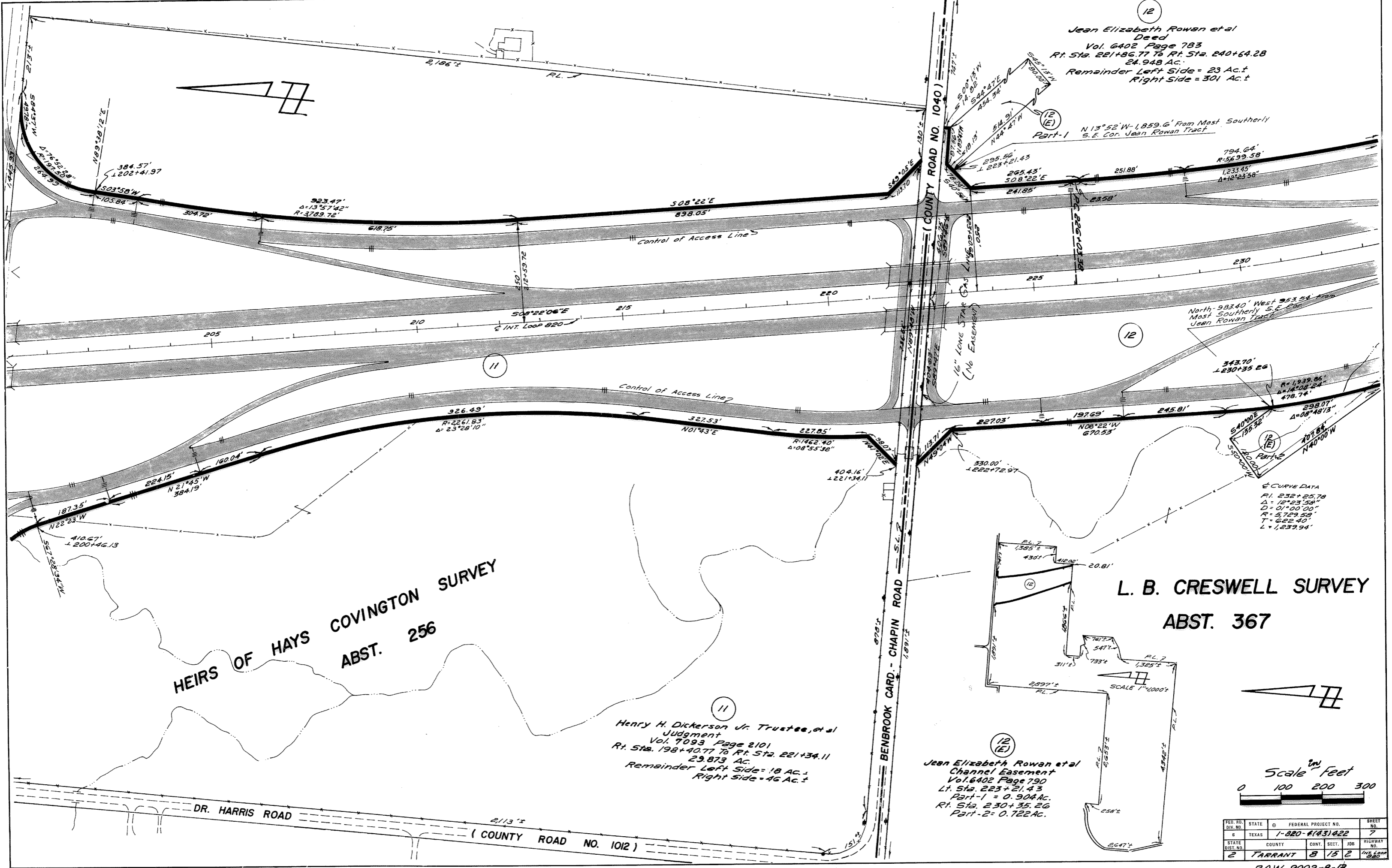


Curve Data
R1: 178+03.60'
A: 08°22'52"
D: 00°30'
R: 11,459.16'
T: 839.61'
L: 1,676.82'

(7A)
For Property Data
See Sheet 3



FED. RD. DIV. NO.	STATE	FEDERAL PROJECT NO.	SHEET NO.
6	TEXAS	1-820-4(13)422	6
STATE DIST. NO.	COUNTY	CONT. SECT. JOB	HIGHWAY NO.
2	TARRANT	8 15 2	152



12
 Jean Elizabeth Rowan et al
 Deed
 Vol. 6402 Page 783
 Rt. Sta. 221+86.77 To Rt. Sta. 240+64.28
 24.948 Ac.
 Remainder Left Side = 23 Ac.±
 Right Side = 301 Ac.±

Part-1 N 13°52'W - 1,859.6' From Most Southerly
 S.E. Cor. Jean Rowan Tract

North - 983.40' West 253.58' From
 Most Southerly S.E. Cor.
 Jean Rowan Tract

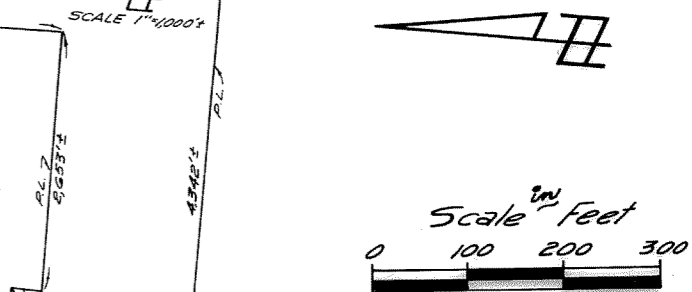
CURVE DATA
 R1 = 232 + 25.78
 Δ = 12°23'30"
 D = 0'00"00"
 R = 5,729.58'
 T = 622.40'
 L = 1,237.94'

HEIRS OF HAYS COVINGTON SURVEY
 ABST. 256

L. B. CRESWELL SURVEY
 ABST. 367

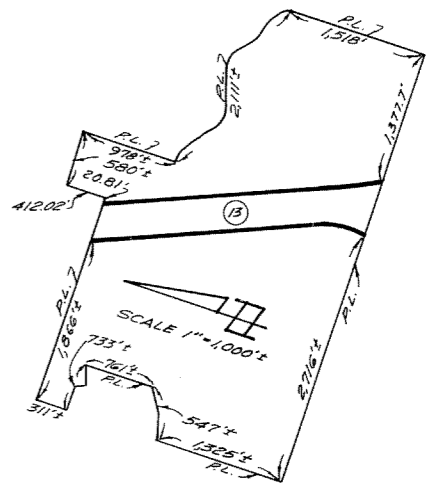
11
 Henry H. Dickerson Jr. Trustee, et al
 Judgment
 Vol. 7093 Page 2101
 Rt. Sta. 198+40.77 To Rt. Sta. 221+34.11
 29.873 Ac.
 Remainder Left Side = 18 Ac.±
 Right Side = 46 Ac.±

12 (E)
 Jean Elizabeth Rowan et al
 Channel Easement
 Vol. 6402 Page 790
 Lt. Sta. 223+21.43
 Part-1 = 0.904 Ac.
 Rt. Sta. 230+35.26
 Part-2 = 0.722 Ac.



FED. NO.	STATE	FEDERAL PROJECT NO.	SHEET NO.
6	TEXAS	1-820-4(43)422	7
STATE DIST. NO.	COUNTY	CONT. SECT. 100	HIGHWAY NO.
2	TARRANT	8 15 2	100

(12)
(E)
Jean Elizabeth Rowan et al
Channel Easement
Vol. 6402 Page 790
Lt. Sta. 239+12.70
Part-3 = 0.559 AC.



SW. BELL TEL. UG CABLE
D-15-80A
OWNER April 18, 1978
SDH IPT MAY 3, 1978

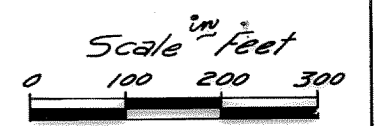
24" FT. NORTH SAN SEWER
OWNER SDH IPT 25, 1978
SDH IPT AUG. 28, 1978

L. B. CRESWELL SURVEY
ABST. 367

T. G. ZACHARY SURVEY
ABST. 1759

(12)
(TE)
Jean Elizabeth Rowan et al
Temporary Const. Easement
Vol. 6402 Page 778
Lt. Sta. 239+12.70
0.225 AC.

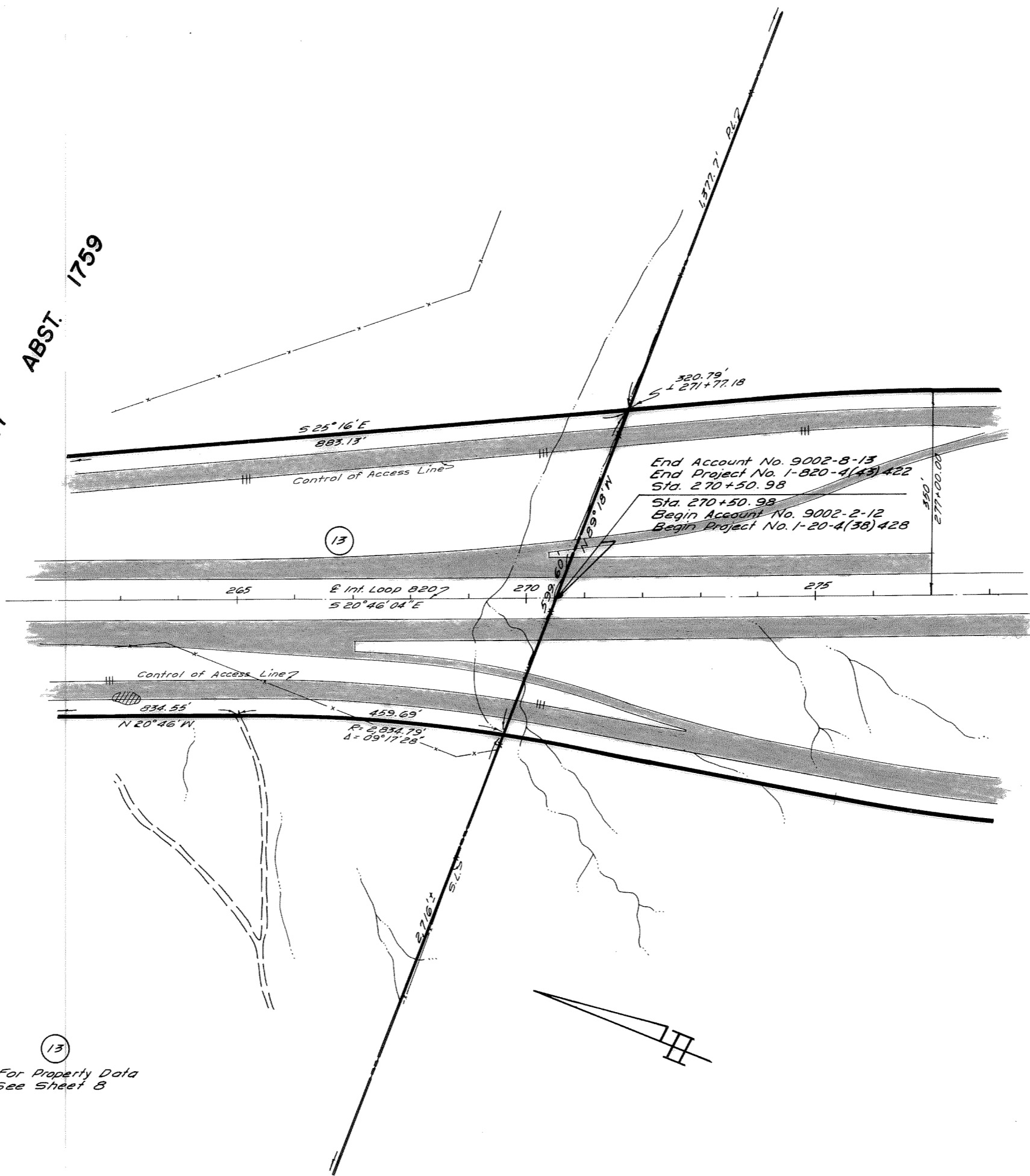
(13)
Sue Rowan Laughlin et al
Deed
Vol. 6402 Page 797
Lt. Sta. 242+39.94 To Lt. Sta. 271+77.18
32.012 AC.
Remainder Left Side = 87 Ac.±
Right Side = 127 Ac.±



FED. NO.	STATE	FEDERAL PROJECT NO.	SHEET NO.
6	TEXAS	1-820-41431422	8
STATE DIST. NO.	COUNTY	CONT. SECT. JOR	HIGHWAY NO.
2	TARRANT	8 15 2	Int. Loop 820

T. G. ZACHARY SURVEY
 ABST. 1759

J. F. ELLIOTT SURVEY
 ABST. 493

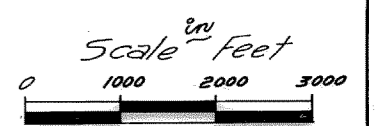
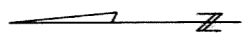
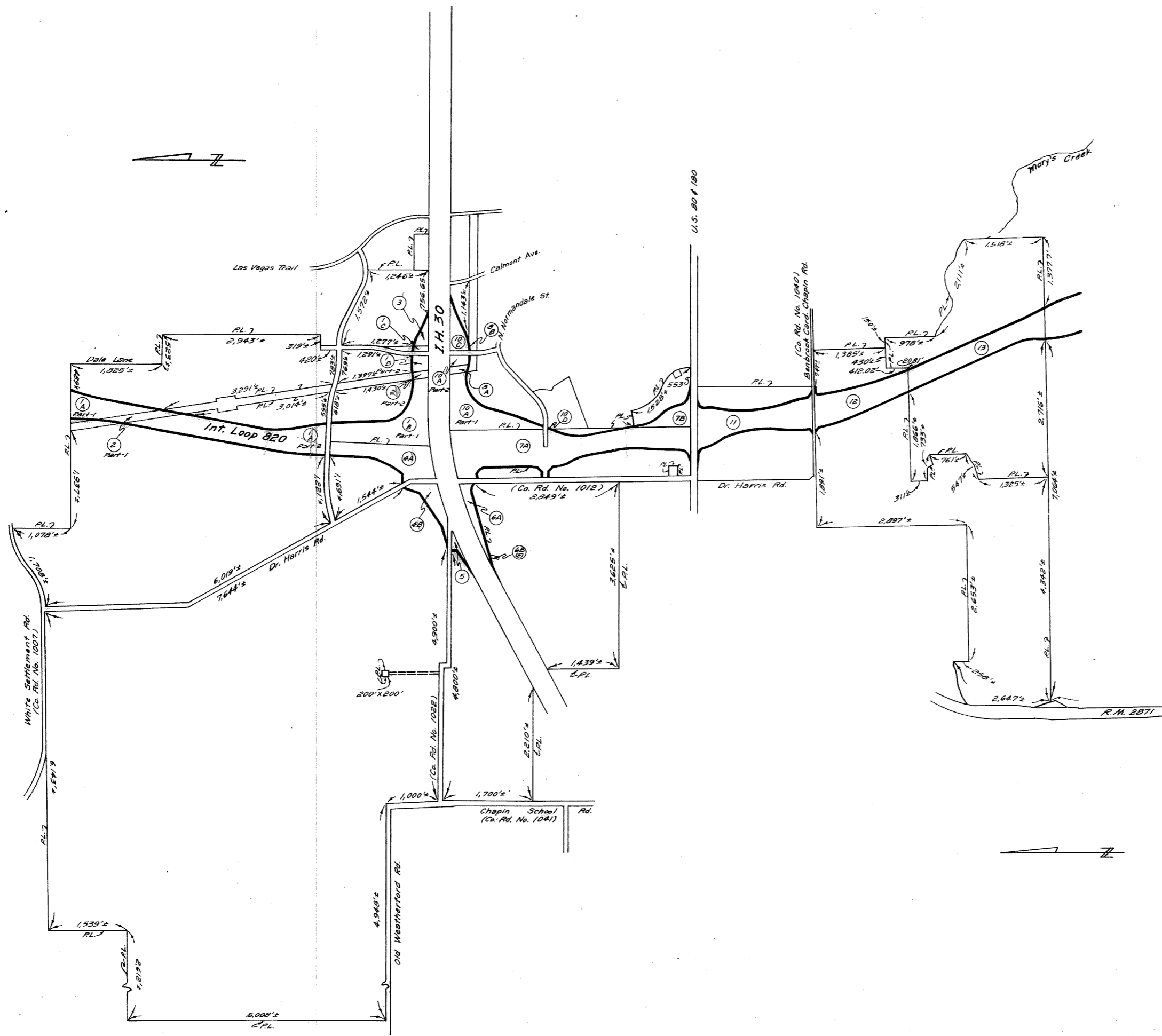
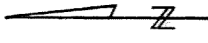


End Account No. 9002-8-13
 End Project No. 1-820-4(43) 422
 Sta. 270+50.98
 Sta. 270+50.98
 Begin Account No. 9002-2-12
 Begin Project No. 1-20-4(38) 428

(13)
 For Property Data
 See Sheet 8



FED. RD. DIV. NO.	STATE	FEDERAL PROJECT NO.	SHEET NO.
6	TEXAS	1-820-4(43) 422	9
STATE DIST. NO.	COUNTY	CONT. SECT. JDR	HIGHWAY NO.
2	TARRANT	8 15 2	Int. Loop 8207



FED. RD. DIV. NO.	STATE	FEDERAL PROJECT NO.	SHEET NO.
6	TEXAS	1-820-4(43)422	10
STATE DIST. NO.	COUNTY	CONT. SECT. JOB	HIGHWAY NO.
2	TARRANT	8 15 2	INT. LOOP 820

R.O.W. 9002-8-13 8-25-77