

Contract Time Determination Worksheet

Bar Chart Method

Project Information

Description: SH 288 NB Frontage Road
 CSJ 0598-02-119

County: Brazoria District: Houston

ID No.	Description	Contract Quantity	Units	Production Rate	Working Day Duration	Preceding Activity		Start Day	Finish Day
						ID	Percent Complete		
Phase 1									
1	Initial Traffic Control Setup	1	LS	1	1	1		1	1
2	Prepare ROW	4.4	STA	6	1	1	100%	2	2
3	Install Construction Exits	220	SY	400	1	2	100%	3	3
4	Install Erosion Control Fence and Logs	317	LF	2000	1	3	100%	4	4
5	Install Rock Filter Dam	60	LF	300	1	4	100%	5	5
6	Install Portable Concrete Traffic Barrier	2000	LF	750	3	5	100%	6	8
7	Remove Concrete Pvmnt - Phase 1	5675	SY	1500	4	6	100%	9	12
8	Excavation (Road)	5624	CY	1000	6	7	100%	13	18
9	Embankment (Road)	11727	CY	1000	12	8	100%	19	30
10	Excavation (Detention)	4183	CY	750	6	5	100%	6	11
11	Lime Treat Subgrade	24470	SY	2000	13	15	100%	67	79
12	Cement Treated Subgrade - Phase 1	24470	SY	2500	10	11	100%	80	89
13	HMAC Base - Phase 1	1346	TON	750	2	12	100%	90	91
14	Concrete Pavement - Phase 1	22904	SY	2700	9	13	100%	92	100
15	Storm Sewer Pipe	4774	LF	120	40	16	80%	27	66
16	Storm Sewer Box	98	LF	10	10	8	100%	19	28
17	Inlets	21	EA	5	5	15	90%	63	67
18	Concrete Curb	9488	LF	5000	2	14	100%	101	102
19	Striping	12379	LF	10000	2	18	100%	103	104
20	Illumination	1	LS	0.2	5	15	100%	67	71
21	Sod, Seed, and Fertilize - Phase 2	26682	SY	2000	14	19	100%	105	118
Phase 2									
23	Move Portable Concrete Traffic Barrier	580	LF	750	1	21	100%	119	119
24	Remove Concrete Pvmnt - Phase 1	2675	SY	1500	2	23	100%	120	121
25	Excavation (Road)	350	CY	1000	1	24	100%	122	122
26	Embankment (Road)	725	CY	1000	1	25	100%	123	123
27	Lime Treat Subgrade	1510	SY	750	3	26	100%	124	126
28	Cement Treated Subgrade - Phase 1	1510	SY	750	3	27	100%	127	129
29	HMAC Base - Phase 1	83	TON	750	1	28	25%	128	128
30	Concrete Pavement - Phase 1	1030	SY	500	3	29	100%	129	131
31	Concrete Curb	72	LF	5000	1	30	100%	132	132
32	Striping	300	LF	10000	1	31	100%	133	133
33	Sod, Seed, and Fertilize - Phase 2	1647	SY	2000	1	32	100%	134	134
Phase 3									
35	Move Portable Concrete Traffic Barrier	1780	LF	750	3	33	100%	135	137
36	Remove Concrete Pvmnt - Phase 1	2700	SY	1500	2	35	100%	138	139
37	Excavation (Road)	975	CY	1000	1	36	100%	140	140
38	Embankment (Road)	2025	CY	1000	3	37	100%	141	143
39	Lime Treat Subgrade	2025	SY	750	3	38	100%	144	146
40	Cement Treated Subgrade - Phase 1	2025	SY	750	3	39	100%	147	149
41	HMAC Base - Phase 1	233	TON	750	1	40	100%	150	150
42	Concrete Pavement - Phase 1	3177	SY	500	7	41	100%	151	157
43	Concrete Curb	89	LF	5000	1	42	100%	158	158
44	Striping	300	LF	10000	1	43	100%	159	159
45	Sod, Seed, and Fertilize - Phase 2	4612	SY	2000	3	44	100%	160	162
46	Remove Portable Concrete Traffic Barrier	2000	LF	250	8	45	25%	161	168
47	Remove Construction Exits	220	LF	500	1	46	100%	169	169
48	Remove Rock Filter Dam	60	SY	400	1	46	100%	169	169
49	Remove Silt Fence and SW3P	317	LF	300	2	48	100%	170	171

Total Working Days 171

Comments:

365 days/yr - 52 Saturdays - 52 Sundays - 6 Holidays = 255 Allowable calendar days/yr

(255 Allowable calendar days/yr) / (12 months/yr) - 6 Rain days/month = 15.25 Work days/month

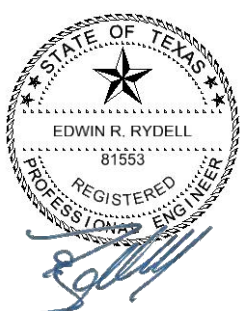
Standard work week is used for this project. Project construction schedule was done using working days.

Calculations below converts the working days to construction months for Item 502 are required.

Number of working days = 171 working days

Excluding holidays and rain days = 15.25 working days/month

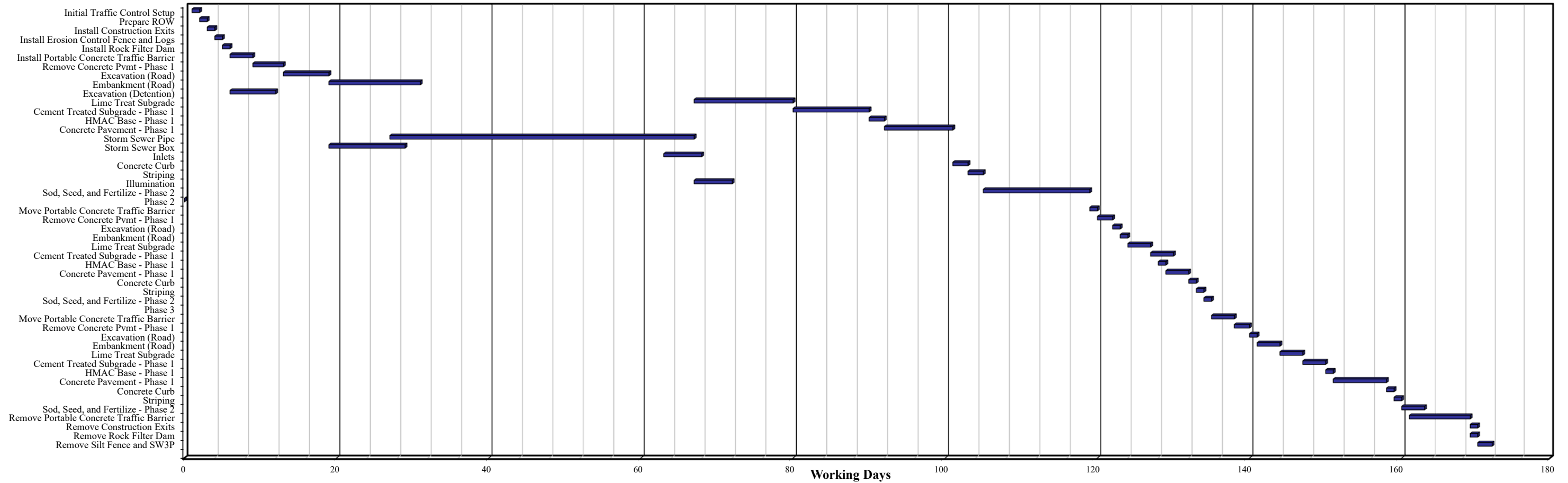
171 working days / (15.25 working days/month) = 12 months



5/20/2020

Project Information

Description: SH 288 NB Frontage Road
CSJ 0598-02-119
 County: Brazoria District: Houston



Comments:

365 days/yr - 52 Saturdays - 52 Sundays - 6 Holidays = 255 Allowable calendar days/yr

(255 Allowable calendar days/yr) / (12 months/yr) - 6 Rain days/month = 15.25 Work days/month

Standard work week is used for this project. Project construction schedule was done using working days.

Calculations below converts the working days to construction months for Item 502 are required.

Number of working days = 171 working days

Excluding holidays and rain days = 15.25 working days/month

171 working days / (15.25 working days/month) = 12 months



5/20/2020