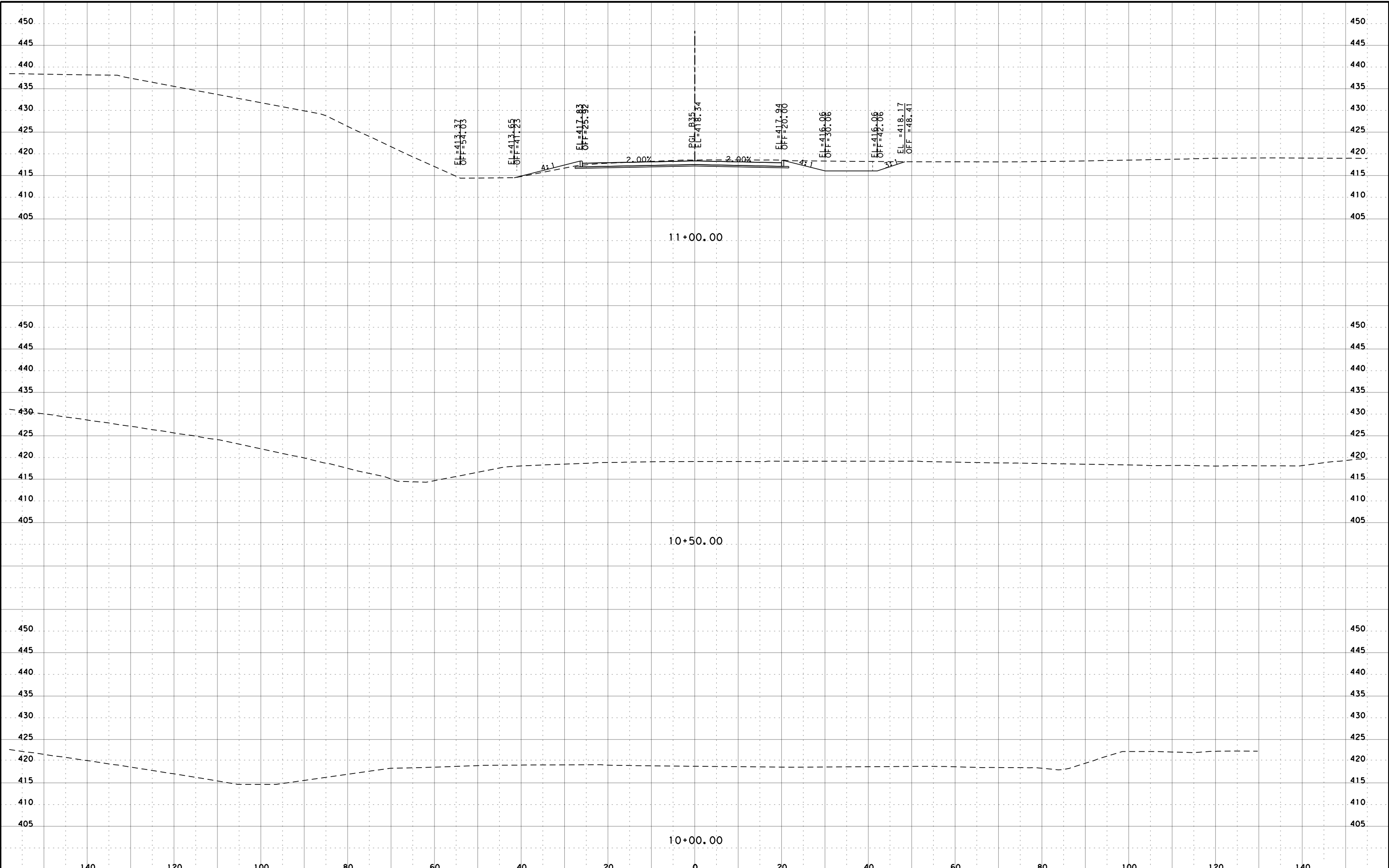


DATE: 4/27/2020 10:18:13 AM
 FILE: pw: \\us-hou-pw01.dannenbaum.local\Documents\Transportation\4946-04\Project Documentation\Submittals\Final\4946_B135 CROSS SECTION SHOTS.dgn



B35 CROSS SECTIONS

FOR INFORMATION PURPOSES ONLY
 CROSS SECTION DATA IS FOR NON-CONSTRUCTION PURPOSES ONLY. IT IS THE RESPONSIBILITY OF THE PROSPECTIVE BIDDER TO VALIDATE THE DATA.

SCALE: 1" = 20 (HORZ)
 1" = 20 (VERT)
 SHEET 1 OF 8

DANNENBAUM
 ENGINEERING COMPANY-DALLAS, LLC
 T.B.P.E. FIRM REGISTRATION #8996
 3030 LBJ FREEWAY, SUITE 910 DALLAS, TX 75234 (972)239-2002

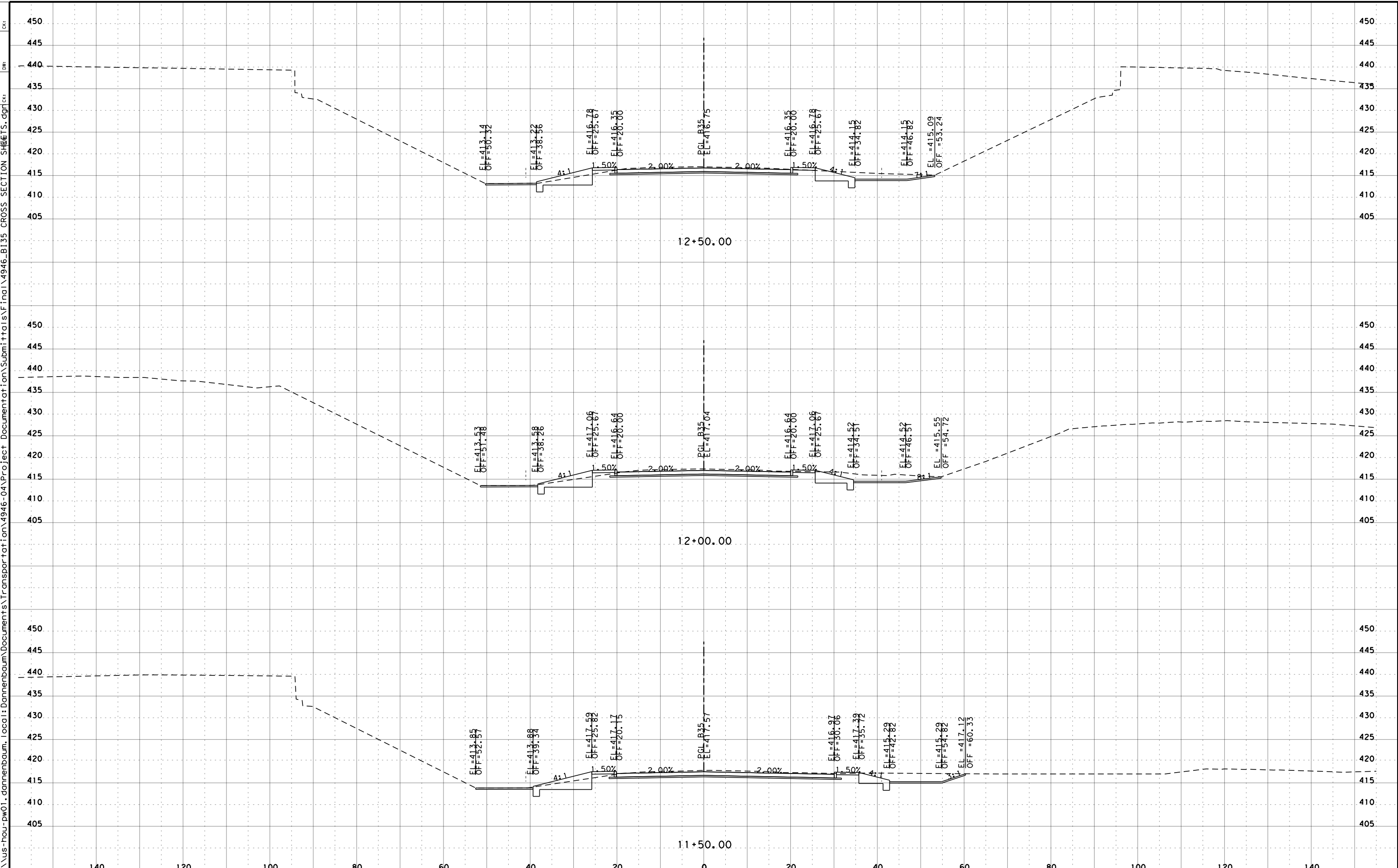


CONT	SECT	JOB	HIGHWAY
\$C\$	\$S\$	\$J\$	\$HWY\$
DIST	COUNTY	SHEET NO.	
\$DST\$	\$CTYS\$	1	

DATE: 4/27/2020 10:18:15 AM

FILE: pw: \\us-hou-pw01.dannenbaum.local: D:\Documents\Transportation\4946-04\Project Documentation\Submittals\Final\4946_B135_CROSS_SECTION_SHEETS.dgn

CHK: DWF: SHEET: 2 OF 8



B35 CROSS SECTIONS

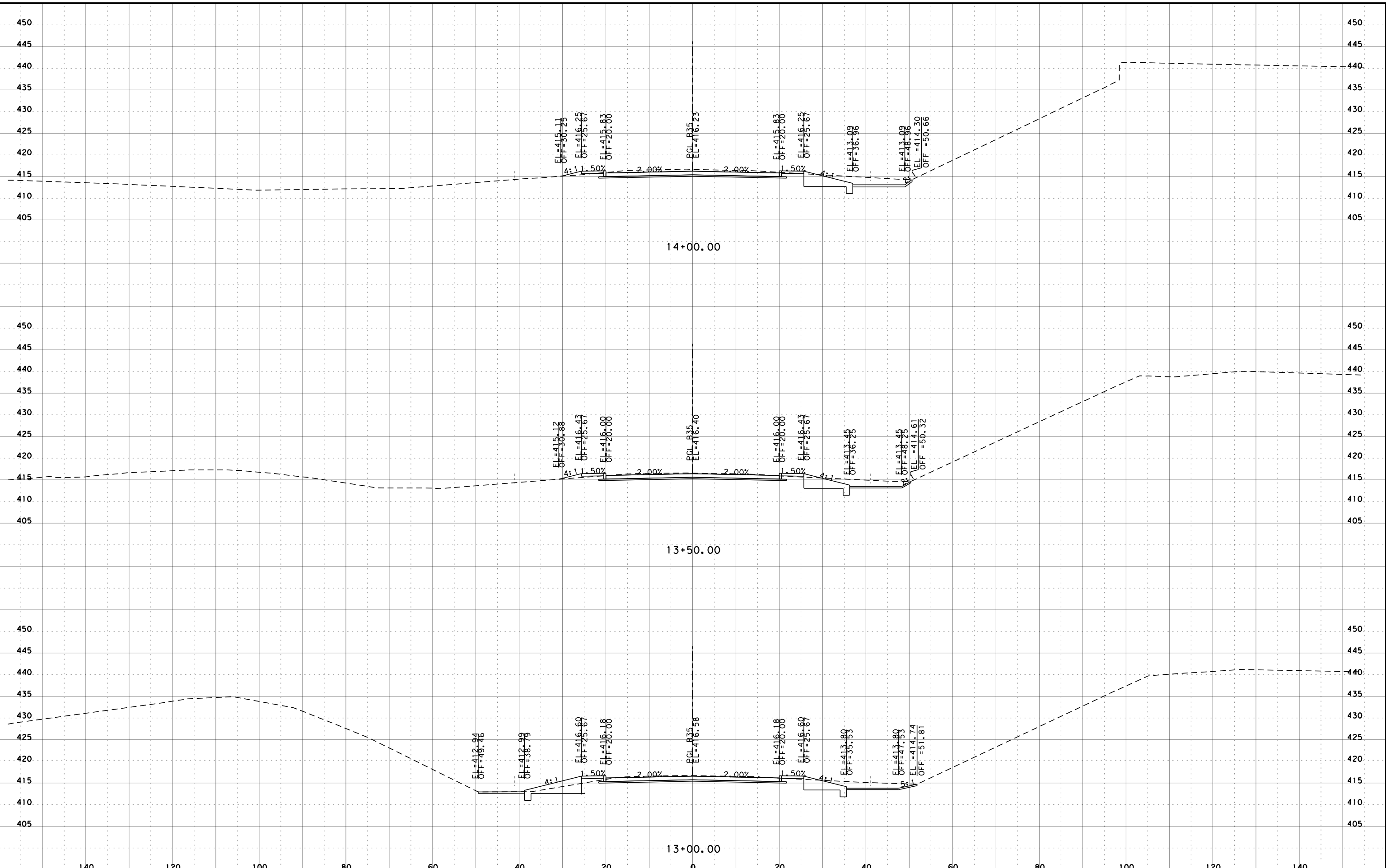
FOR INFORMATION PURPOSES ONLY
 CROSS SECTION DATA IS FOR NON-CONSTRUCTION PURPOSES ONLY. IT IS THE RESPONSIBILITY OF THE PROSPECTIVE BIDDER TO VALIDATE THE DATA.

SCALE: 1" = 20 (HORZ)
 1" = 20 (VERT)
 SHEET 2 OF 8

DANNENBAUM
 ENGINEERING COMPANY-DALLAS, LLC
 T.B.P.E. FIRM REGISTRATION #8996
 3030 LBJ FREEWAY, SUITE 910 DALLAS, TX 75234 (972)239-2002



CONT	SECT	JOB	HIGHWAY
\$C\$	\$S\$	\$J\$	\$HWY\$
DIST	COUNTY	SHEET NO.	
\$DST\$	\$CTY\$	2	

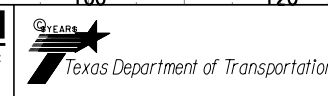


B35 CROSS SECTIONS

FOR INFORMATION PURPOSES ONLY
 CROSS SECTION DATA IS FOR NON-CONSTRUCTION PURPOSES ONLY. IT IS THE RESPONSIBILITY OF THE PROSPECTIVE BIDDER TO VALIDATE THE DATA.

SCALE: 1" = 20 (HORZ)
 1" = 20 (VERT)
 SHEET 3 OF 8

DANNENBAUM
 ENGINEERING COMPANY-DALLAS, LLC
 T.B.P.E. FIRM REGISTRATION #8996
 3030 LBJ FREEWAY, SUITE 910 DALLAS, TX 75234 (972)239-2002



CONT	SECT	JOB	HIGHWAY
\$C\$	\$S\$	\$J\$	\$HWY\$
DIST	COUNTY	SHEET NO.	
\$DST\$	\$CTY\$	3	

DATE: 4/27/2020 10:18:19 AM

FILE: pw:\us-hou-pw01.dannenbaum.local\Documents\Transportation\4946-04\Project Documentation\Submittals\Final\4946_BI35 CROSS SECTION SHIETS.dgn

CHK:

DWG:

SHIETS.dgn

15+50.00

15+00.00

14+50.00

140

120

100

80

60

40

20

0

20

40

60

80

100

120

140

405

410

415

420

425

430

435

440

445

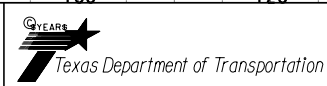
450

B35 CROSS SECTIONS

FOR INFORMATION PURPOSES ONLY
 CROSS SECTION DATA IS FOR NON-CONSTRUCTION
 PURPOSES ONLY. IT IS THE RESPONSIBILITY OF
 THE PROSPECTIVE BIDDER TO VALIDATE THE DATA.

SCALE: 1" = 20 (HORZ)
 1" = 20 (VERT)
 SHEET 4 OF 8

DANNENBAUM
 ENGINEERING COMPANY-DALLAS, LLC
 T.B.P.E. FIRM REGISTRATION #8996
 3030 LBJ FREEWAY, SUITE 910 DALLAS, TX 75234 (972)239-2002



CONT	SECT	JOB	HIGHWAY
\$C\$	\$S\$	\$J\$	\$HW\$
DIST	COUNTY	SHEET NO.	
\$DST\$	\$CTYS	4	

15+50.00

15+00.00

14+50.00

EL = 416.93
OFF = 28.32

EL = 416.67
OFF = 25.67

EL = 415.84
OFF = 20.84

PCL B35
EL = 416.24

EL = 415.84
OFF = 20.84

EL = 415.67
OFF = 25.67

EL = 413.61
OFF = 36.29

EL = 413.61
OFF = 48.29

EL = 414.24
OFF = 50.19

EL = 416.56
OFF = 27.33

EL = 416.14
OFF = 25.67

EL = 415.70
OFF = 20.70

PCL B35
EL = 416.12

EL = 415.70
OFF = 20.70

EL = 415.14
OFF = 25.67

EL = 412.84
OFF = 37.56

EL = 412.84
OFF = 49.56

EL = 424.16
OFF = 83.44

EL = 414.18
OFF = 46.11

EL = 412.70
OFF = 42.70

EL = 410.09
OFF = 40.09

EL = 415.14
OFF = 25.67

EL = 415.70
OFF = 20.70

PCL B35
EL = 416.12

EL = 415.70
OFF = 20.70

EL = 415.14
OFF = 25.67

EL = 412.74
OFF = 37.92

EL = 412.74
OFF = 47.92

EL = 414.43
OFF = 50.90

DATE: 4/27/2020 10:18:21 AM

FILE: pw:\us-hou-pw01.dannenbaum.local:Dannenbaum\Documents\Transportation\4946-04\Project Documentation\Submittals\Final\4946_BI35_CROSS_SECTION_SHEETS.dgn

CHK:

DWG:

CHK:

CHK:

CHK:

CHK:

CHK:

CHK:

CHK:

CHK:

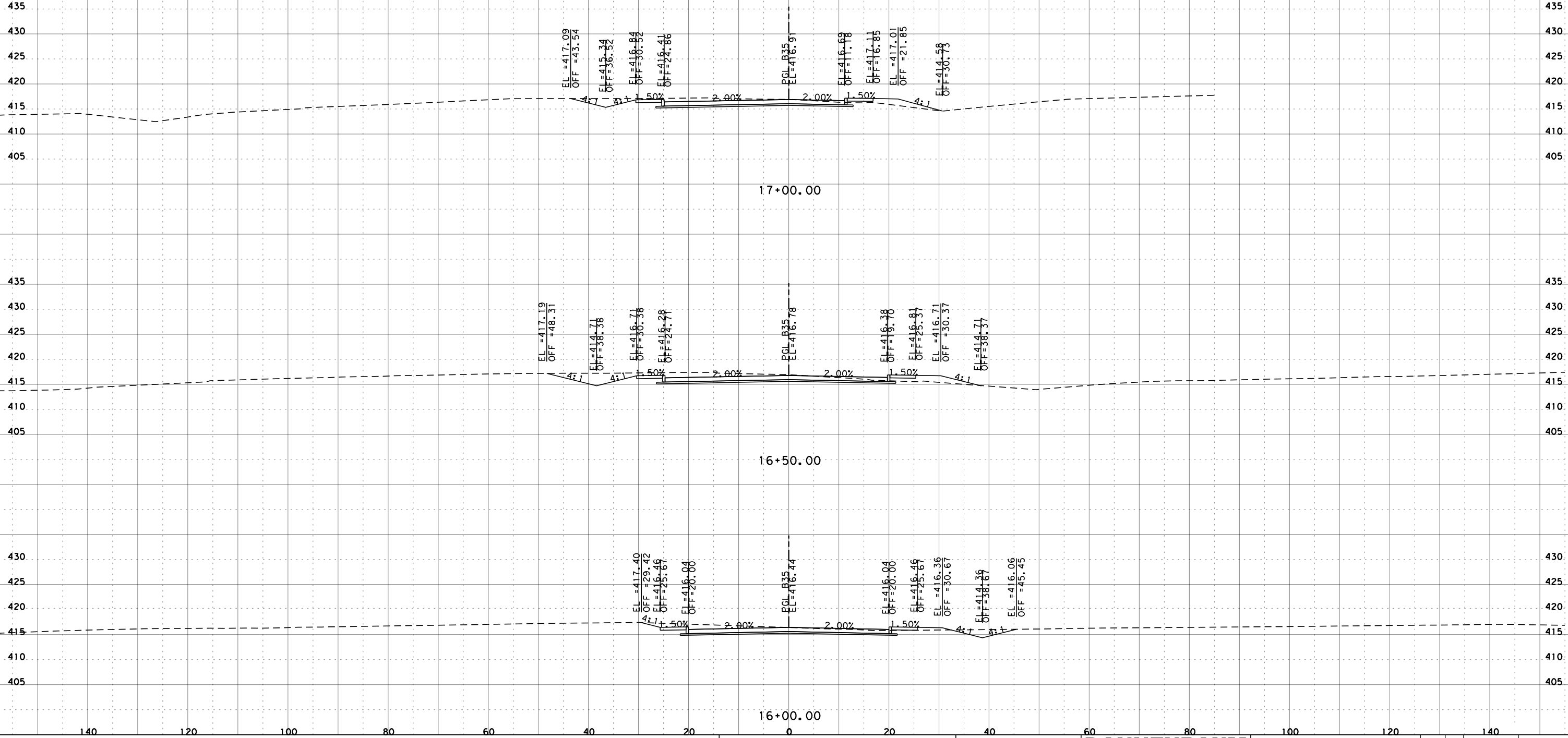
CHK:

CHK:

CHK:

CHK:

CHK:



B35 CROSS SECTIONS

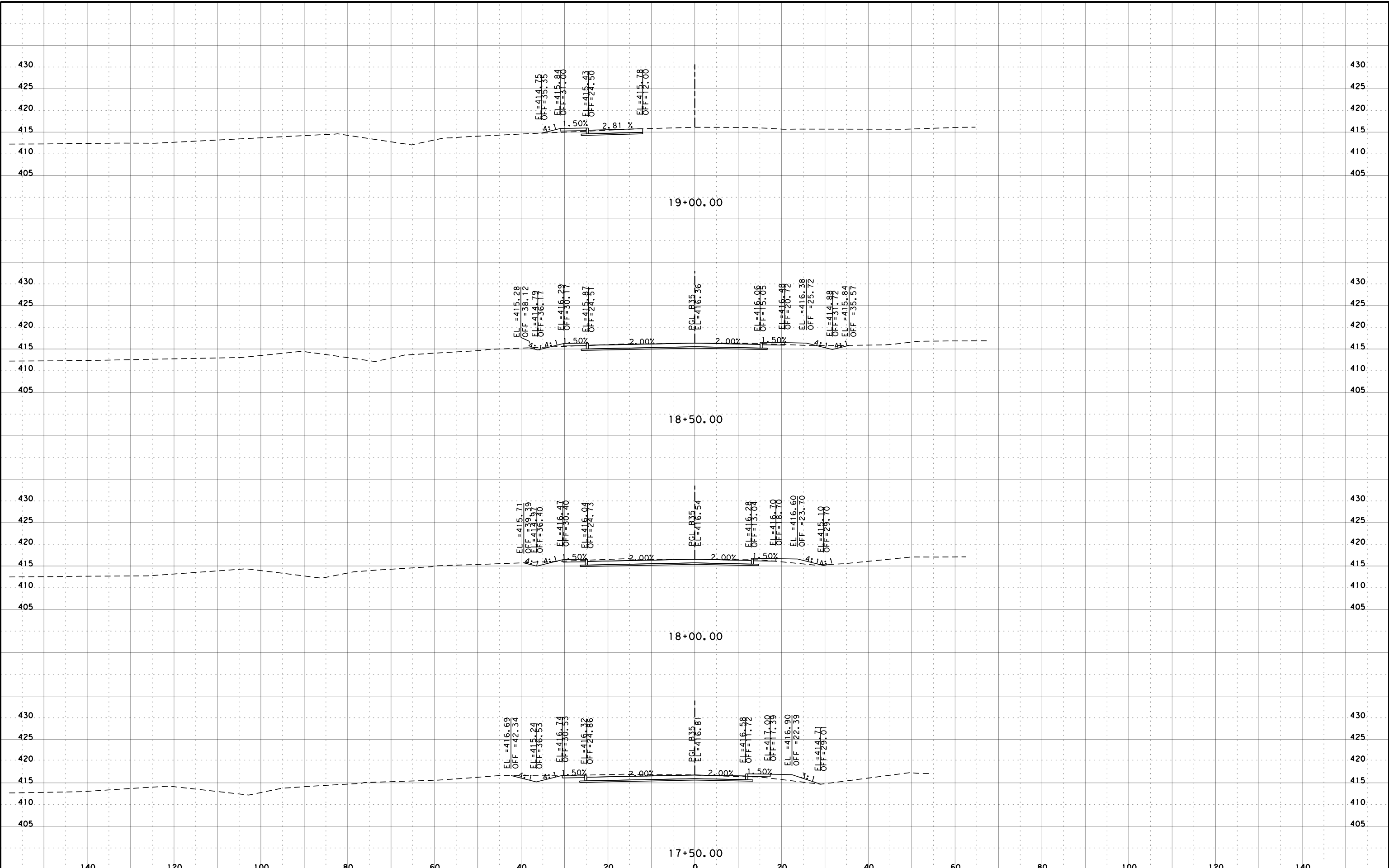
FOR INFORMATION PURPOSES ONLY
CROSS SECTION DATA IS FOR NON-CONSTRUCTION PURPOSES ONLY. IT IS THE RESPONSIBILITY OF THE PROSPECTIVE BIDDER TO VALIDATE THE DATA.

SCALE: 1" = 20 (HORZ)
1" = 20 (VERT)
SHEET 5 OF 8

DANNENBAUM
ENGINEERING COMPANY-DALLAS, LLC
T.B.P.E. FIRM REGISTRATION #8996
3030 LBJ FREEWAY, SUITE 910 DALLAS, TX 75234 (972)239-2002



CONT	SECT	JOB	HIGHWAY
\$C\$	\$S\$	\$J\$	\$HWY\$
DIST	COUNTY	SHEET NO.	
\$DST\$	\$CTY\$	5	



B35 CROSS SECTIONS

FOR INFORMATION PURPOSES ONLY
 CROSS SECTION DATA IS FOR NON-CONSTRUCTION PURPOSES ONLY. IT IS THE RESPONSIBILITY OF THE PROSPECTIVE BIDDER TO VALIDATE THE DATA.

SCALE: 1" = 20 (HORZ)
 1" = 20 (VERT)
 SHEET 6 OF 8

DANNENBAUM
 ENGINEERING COMPANY-DALLAS, LLC
 T.B.P.E. FIRM REGISTRATION #8996
 3030 LBJ FREEWAY, SUITE 910 DALLAS, TX 75234 (972)239-2002

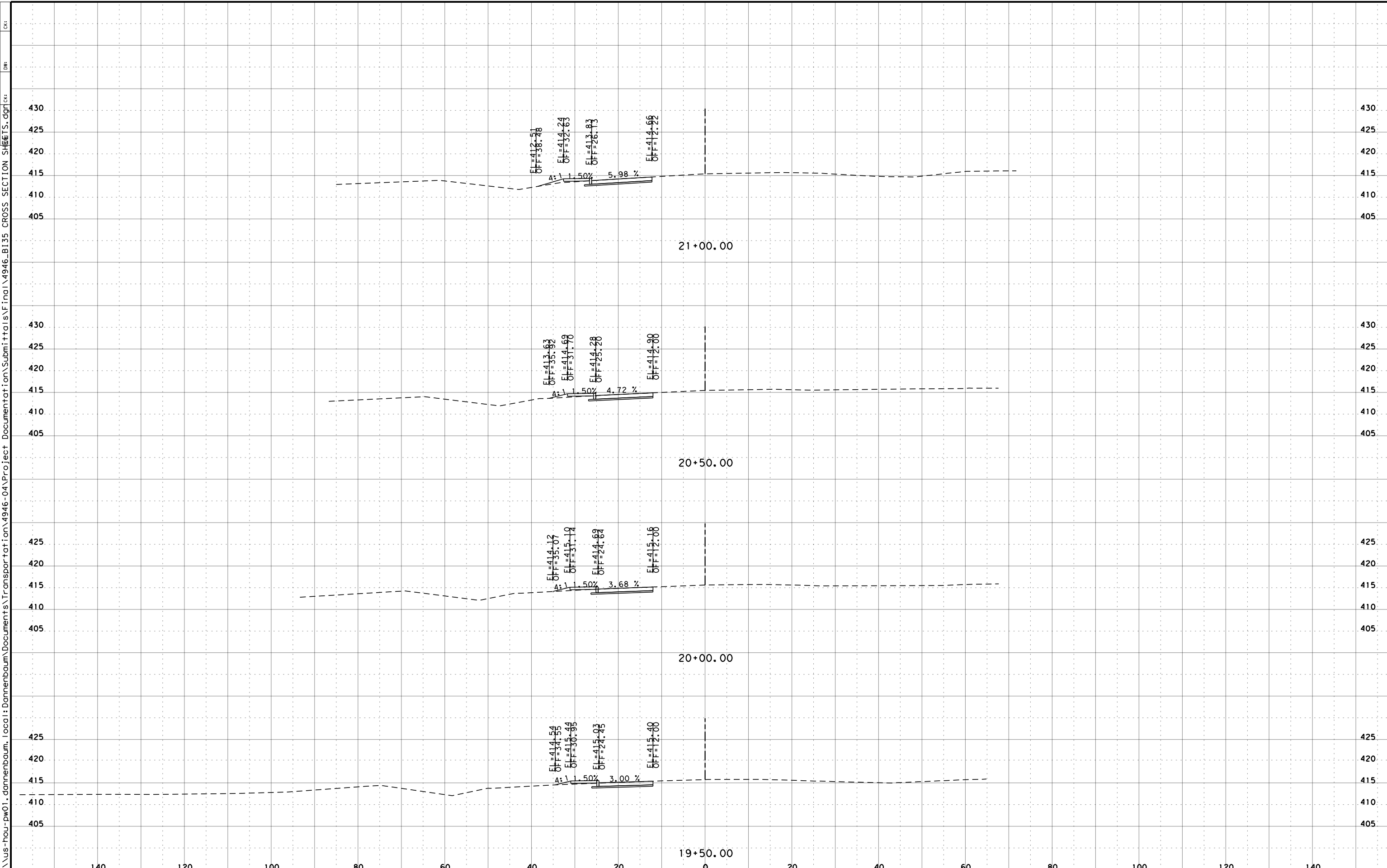


CONT	SECT	JOB	HIGHWAY
\$C\$	\$S\$	\$J\$	\$HWY\$
DIST	COUNTY	SHEET NO.	
\$DST\$	\$CTYS\$	6	

DATE: 4/27/2020 10:18:25 AM

FILE: pw: \\us-hou-pw01.dannenbaum.local\Documents\Transportation\4946-04\Project Documentation\Submittals\Final\4946_BI35 CROSS SECTION SHEETS.dgn

CHK: DWF:



B35 CROSS SECTIONS

FOR INFORMATION PURPOSES ONLY
CROSS SECTION DATA IS FOR NON-CONSTRUCTION PURPOSES ONLY. IT IS THE RESPONSIBILITY OF THE PROSPECTIVE BIDDER TO VALIDATE THE DATA.

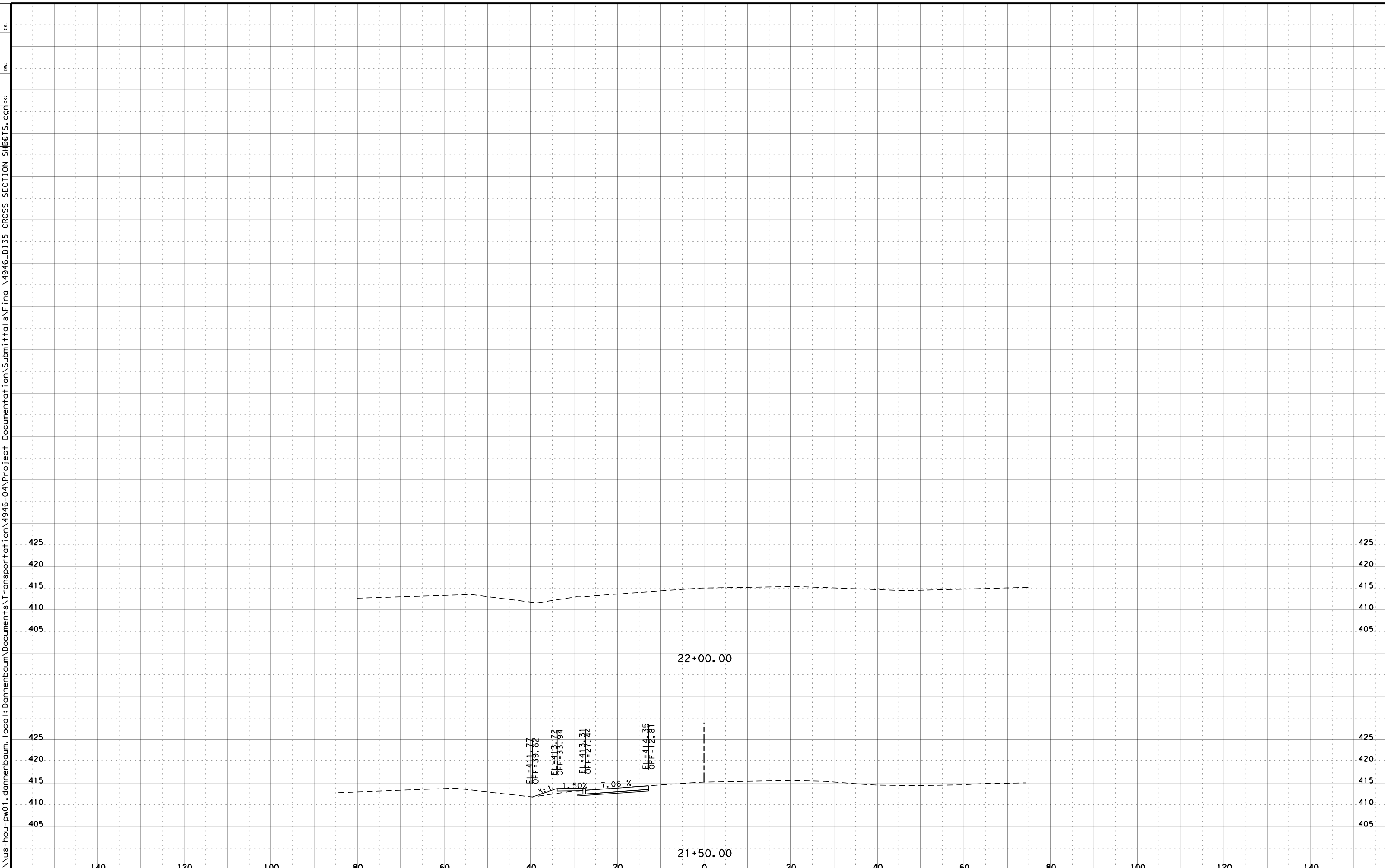
SCALE: 1" = 20 (HORZ)
1" = 20 (VERT)
SHEET 7 OF 8

DANNENBAUM
ENGINEERING COMPANY-DALLAS, LLC
T.B.P.E. FIRM REGISTRATION #8996
3030 LBJ FREEWAY, SUITE 910 DALLAS, TX 75234 (972)239-2002



CONT	SECT	JOB	HIGHWAY
\$C\$	\$S\$	\$J\$	\$HWY\$
DIST	COUNTY	SHEET NO.	
\$DST\$	\$CTYS\$	7	

DATE: 4/27/2020 10:18:27 AM
 FILE: pw:\us-hou-pw01.dannenbaum.local:Dannenbaum\Documents\Transportation\4946-04\Project Documentation\Submittals\Final\4946_B135_CROSS_SECTION_SHEETS.dgn



B35 CROSS SECTIONS

FOR INFORMATION PURPOSES ONLY
 CROSS SECTION DATA IS FOR NON-CONSTRUCTION PURPOSES ONLY. IT IS THE RESPONSIBILITY OF THE PROSPECTIVE BIDDER TO VALIDATE THE DATA.

SCALE: 1" = 20 (HORZ)
 1" = 20 (VERT)

SHEET 8 OF 8

DANNENBAUM
 ENGINEERING COMPANY-DALLAS, LLC
 T.B.P.E. FIRM REGISTRATION #8996
 3030 LBJ FREEWAY, SUITE 910 DALLAS, TX 75234 (972)239-2002



CONT	SECT	JOB	HIGHWAY
\$C\$	\$S\$	\$J\$	\$HWY\$
DIST	COUNTY	SHEET NO.	
\$DST\$	\$CTY\$	8	