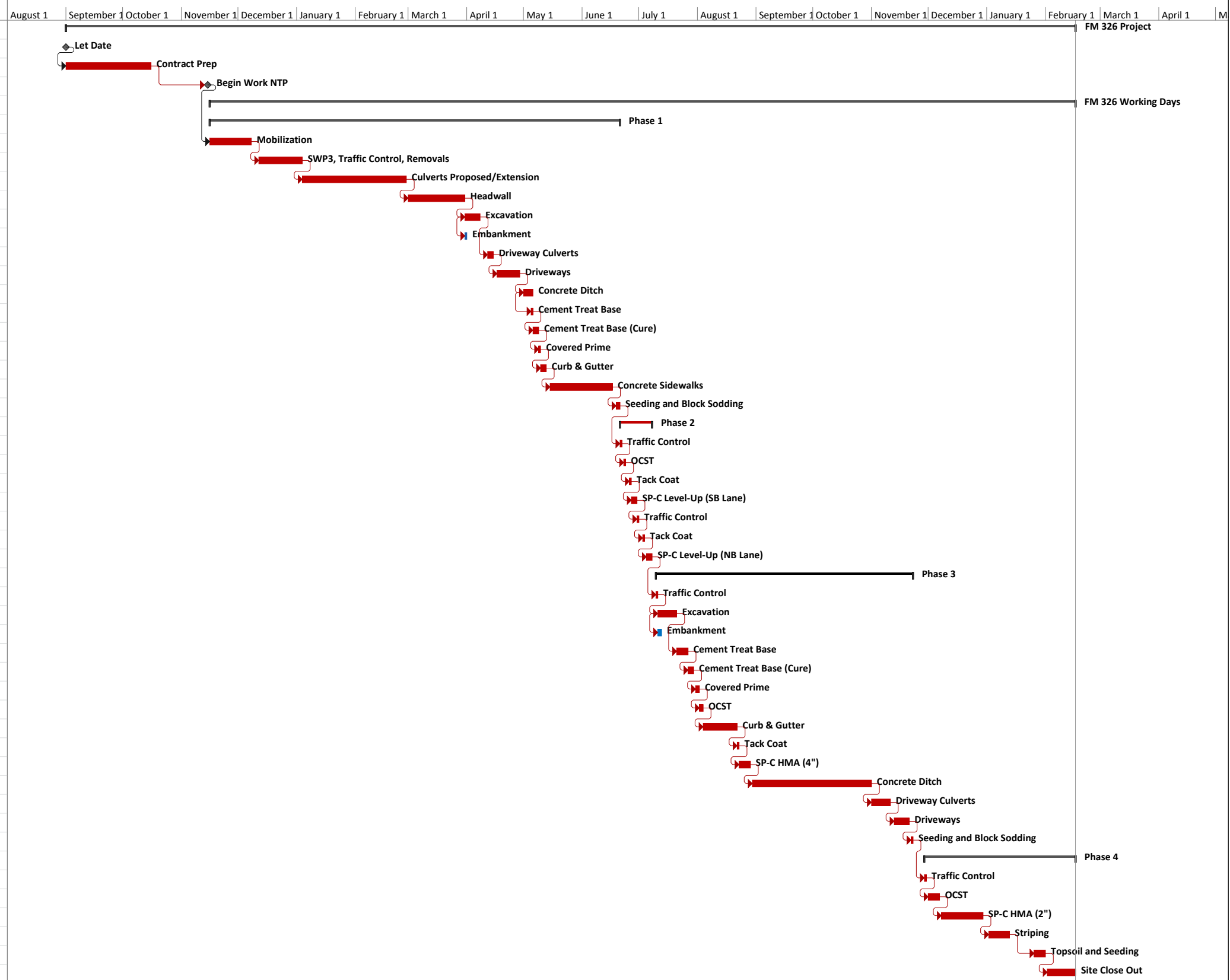


**Lufkin District  
FM 326 Construction Schedule**

ID	Task Mode	Task Name	Quantity	Unit	Daily Rate	Duration	Start	Finish	Calendar
1		<b>FM 326 Project</b>				<b>202 days</b>	<b>Thu 9/1/22</b>	<b>Fri 2/16/24</b>	
2		Let Date				0 days	Thu 9/1/22	Thu 9/1/22	5
3		Contract Prep				45 days	Thu 9/1/22	Sat 10/15/22	5
4		Begin Work NTP				0 days	Mon 11/14/22	Mon 11/14/22	5
5		<b>FM 326 Working Days</b>				<b>171 days</b>	<b>Wed 11/16/22</b>	<b>Fri 2/16/24</b>	
6		<b>Phase 1</b>				<b>74 days</b>	<b>Wed 11/16/22</b>	<b>Tue 6/20/23</b>	
7		Mobilization	10	DAY	1	10 days	Wed 11/16/22	Wed 12/7/22	1
8		SWP3, Traffic Control, Removals	24.2	STA	5	5 days	Mon 12/12/22	Tue 1/3/23	1
9		Culverts Proposed/Extension	90	LF	8	12 days	Wed 1/4/23	Mon 2/27/23	1
10		Headwall	3	EA	0.3	10 days	Wed 3/1/23	Thu 3/30/23	1
11		Excavation	640	CY	250	3 days	Fri 3/31/23	Fri 4/7/23	1
12		Embankment	359	CY	400	1 day	Fri 3/31/23	Fri 3/31/23	1
13		Driveway Culverts	246	LF	100	2 days	Wed 4/12/23	Fri 4/14/23	1
14		Driveways	1063	SY	200	5 days	Mon 4/17/23	Fri 4/28/23	1
15		Concrete Ditch	173	SY	40	4 days	Mon 5/1/23	Fri 5/5/23	1
16		Cement Treat Base	1250	SY	1,500	1 day	Fri 5/5/23	Fri 5/5/23	3
17		Cement Treat Base (Cure)				3 days	Sat 5/6/23	Mon 5/8/23	5
18		Covered Prime	313	GAL	500	1 day	Tue 5/9/23	Tue 5/9/23	1
19		Curb & Gutter	485	LF	200	2 days	Wed 5/10/23	Fri 5/12/23	1
20		Concrete Sidewalks	1290	SY	75	17 days	Mon 5/15/23	Fri 6/16/23	1
21		Seeding and Block Sodding	2638	SY	1500	2 days	Mon 6/19/23	Tue 6/20/23	1
22		<b>Phase 2</b>				<b>11 days</b>	<b>Wed 6/21/23</b>	<b>Fri 7/7/23</b>	
23		Traffic Control	1	LS	1	1 day	Wed 6/21/23	Wed 6/21/23	1
24		OCST	1459	SY	3,600	1 day	Fri 6/23/23	Fri 6/23/23	2
25		Tack Coat	429	GAL	500	1 day	Mon 6/26/23	Mon 6/26/23	2
26		SP-C Level-Up (SB Lane)	1025	TON	300	3 days	Tue 6/27/23	Thu 6/29/23	2
27		Traffic Control	1	LS	1	1 day	Fri 6/30/23	Fri 6/30/23	1
28		Tack Coat	430	GAL	500	1 day	Mon 7/3/23	Mon 7/3/23	2
29		SP-C Level-Up (NB Lane)	1026	SY	300	3 days	Wed 7/5/23	Fri 7/7/23	2
30		<b>Phase 3</b>				<b>68 days</b>	<b>Mon 7/10/23</b>	<b>Wed 11/22/23</b>	
31		Traffic Control	1	LS	1	1 day	Mon 7/10/23	Mon 7/10/23	1
32		Excavation	1492	CY	250	6 days	Tue 7/11/23	Thu 7/20/23	1
33		Embankment	837	CY	400	2 days	Tue 7/11/23	Wed 7/12/23	1
34		Cement Treat Base	4739	SY	1,500	3 days	Fri 7/21/23	Wed 7/26/23	3
35		Cement Treat Base (Cure)				3 days	Thu 7/27/23	Sat 7/29/23	5
36		Covered Prime	1169	GAL	500	2 days	Mon 7/31/23	Tue 8/1/23	2
37		OCST	2010	SY	3,600	2 days	Wed 8/2/23	Thu 8/3/23	2
38		Curb & Gutter	1937	LF	200	10 days	Fri 8/4/23	Mon 8/21/23	1
39		Tack Coat	694	GAL	500	1 day	Tue 8/22/23	Tue 8/22/23	2
40		SP-C HMA (4")	954	TON	300	3 days	Wed 8/23/23	Mon 8/28/23	2
41		Concrete Ditch	1167	SY	40	29 days	Wed 8/30/23	Tue 10/31/23	1
42		Driveway Culverts	326	LF	100	3 days	Wed 11/1/23	Fri 11/10/23	1
43		Driveways	1089	SY	200	5 days	Mon 11/13/23	Mon 11/20/23	1
44		Seeding and Block Sodding	2036	SY	1500	1 day	Wed 11/22/23	Wed 11/22/23	1
45		<b>Phase 4</b>				<b>18 days</b>	<b>Wed 11/29/23</b>	<b>Fri 2/16/24</b>	
46		Traffic Control	1	LS	1	1 day	Wed 11/29/23	Wed 11/29/23	1
47		OCST	11546	SY	3,600	3 days	Fri 12/1/23	Wed 12/6/23	1
48		SP-C HMA (2")	1269	TON	300	4 days	Fri 12/8/23	Fri 12/29/23	1
49		Striping	7464	LF	2500	3 days	Tue 1/2/24	Fri 1/12/24	1
50		Topsoil and Seeding	4675	SY	1500	3 days	Fri 1/26/24	Wed 1/31/24	1
51		Site Close Out	4	LS	1	4 days	Fri 2/2/24	Fri 2/16/24	1



**Rodriguez Transportation Group, Inc.** Start Date: 11/16/22  
**FM 326** Finish Date: 02/16/24  
 Date: Thu 6/16/22

Task █ Milestone ◆ Summary ▬ Critical █ Calendars: 1. Standard Work Week  
 2. Asphalt  
 3. Cement Treat  
 4. MTBA  
 5. Curing

*Chi Gmen*

6/21/2022