

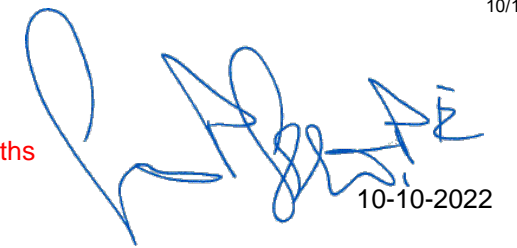
Contract Time Estimate

Rd: FM 219
CSJ: 1054-02-023

County: BOSQUE
Project: F 2023(363)

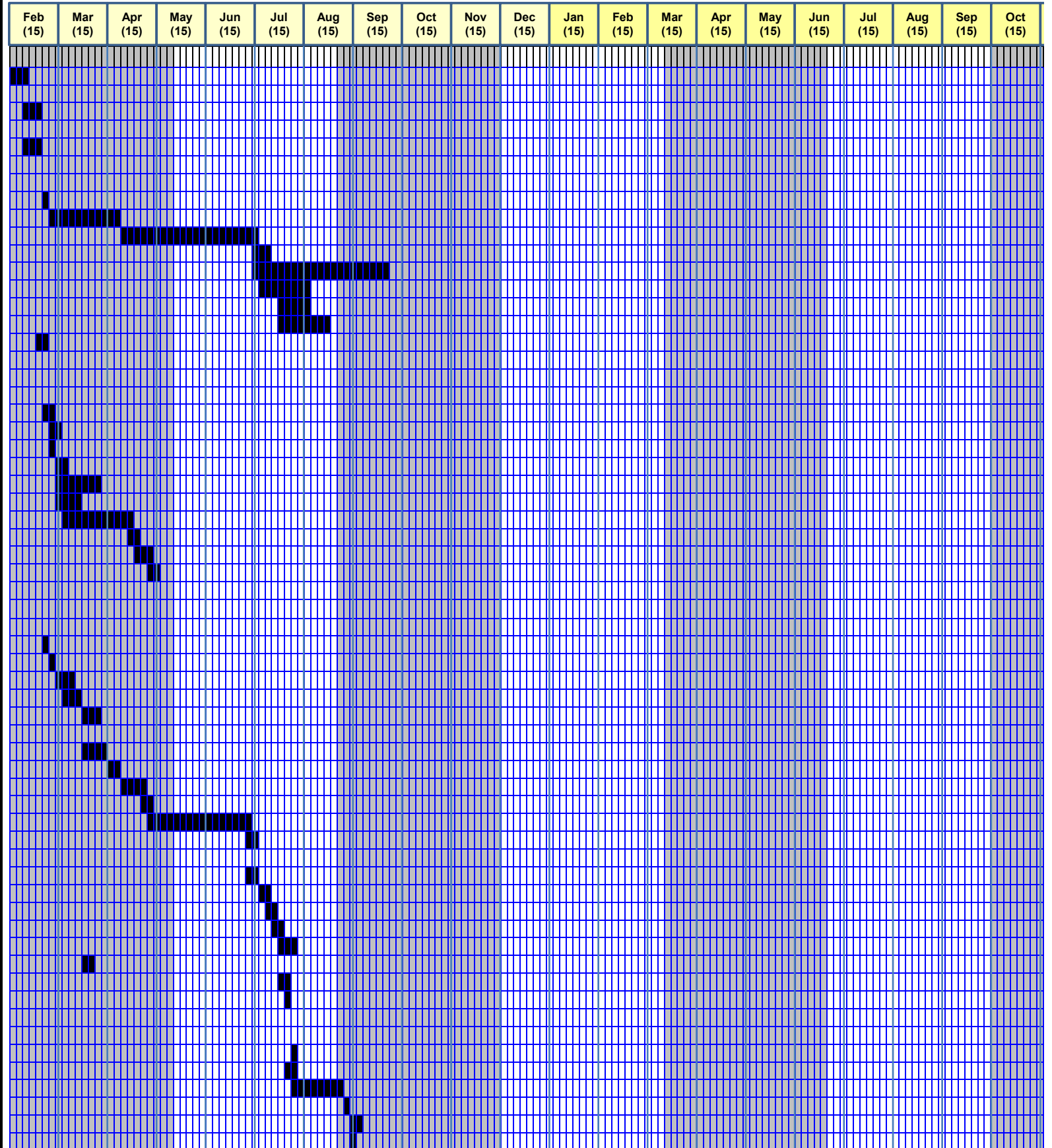
Begin Construction: **February 1, 2023**
End Construction: **September 30, 2024**

365-52 Sundays - 52 Saturdays - 6 Holidays = 255 Days
255 Days / 12 Months = 21.25 Days / Month
21.25 Days / Month - 6 Rain Days / Month = 15 Days / Month
292 Construction Days / 15 Days / Month = 19.47 Months, Use 20 Months
20 Months x 15 Days / Month = **300 Contract Days**



10-10-2022

TASK #	Description	Quantity	Unit	Daily Rate	Duration	Pred Task	% Complete	Pred Task	% Complete	Pred Task	% Complete	Start Day	Finish Day	# Days / Cell =	
														2	2
0	PHASE 1 - INITIAL CONSTRUCTION ACTIVITIES											1	1		
1	TCP - INITIAL TRAFFIC CONTROL SETUP	1	LS	0.2	5							1	5		
2															
3	SW3P - SETUP BMPs	1	LS	0.2	5	1	100					6	10		
4															
5	PREPARE ROW	85	STA	25	4	1	100					6	9		
6															
7	CROSSING CULVERTS (MINOR)														
8	REMOVE DRAINAGE STRUCTURES	12	EA	10	2	3	100					11	12		
9	BOX - CROSSING CULVERTS (Precast)	652	LF	30	22	8	100					13	34		
10	BOX - CROSSING CULVERTS (CIP + Cure Time)	41	LF	1	41	9	100					35	75		
11	PIPE - CROSSING CULVERTS	92	LF	30	4	10	100					76	79		
12	WINGWALLS (CIP + Cure Time)	8	EA	0.2	40	9	50	10	100			76	115		
13	SAFETY END TREATMENTS	30	EA	2	15	11	20					77	91		
14	RIPRAP STONE PROTECTION	409	CY	50	9	12	20	13	20			84	92		
15	CEMENT STABILIZED BACKFILL	664	CY	50	14	12	20	13	20			84	97		
16	CLEAN EXISTING CULVERTS	4	EA	2	2	5	100					10	11		
17															
18															
19	CROSSING CULVERTS (C-208 & C-299)														
20	PORT TEMP SIGNAL - TCP SETUP	4	LS	1	4	3	100					11	14		
21	DETOUR PAVEMENT	300	SY	100	3	20	35					13	15		
22	PORT CTB (SOURCE)	90	LF	90	1	21	25					14	14		
23	PORT CTB (MOVE x3)	270	LF	90	3	22	100					15	17		
24	REMOVE DRAINAGE STRUCTURES	4	EA	0.35	12	23	15					16	27		
25	BOX - CROSSING CULVERTS (Precast)	178	LF	30	6	23	20					16	21		
26	WINGWALLS	4	EA	0.2	20	25	30					18	37		
27	RIPRAP STONE PROTECTION	84	CY	50	2	26	100					38	39		
28	CEMENT STABILIZED BACKFILL	197	CY	50	4	27	100					40	43		
29	TCP REMOVAL	2	LS	1	2	28	100					44	45		
30															
31	PHASE 2 - BRIDGES														
32	GARY CREEK														
33	PORT TEMP SIGNAL - TCP SET UP	2	LS	1	2	3	100					11	12		
34	PORT CTB / CRASH CUSHIONS	930	LF	750	2	33	100					13	14		
35	REMOVE BRIDGE (0-99 FT)	1	LS	0.2	5	34	100					15	19		
36	ABUTMENT EMBANKMENT and EARTHWORK	1	LS	0.2	5	35	50					18	22		
37	TEMP SHORING / REMOVE PVMT	1138	LF	250	5	36	100					23	27		
38	BRIDGE STRUCTURE														
39	CONCRETE FOOTING (Drill Shafts)	8	EA	1	8	36	100					23	30		
40	CONCRETE ABUTMENT	2	EA	0.5	4	39	100					31	34		
41	CONCRETE BENT (Multi-Column)	2	EA	0.3	7	40	100					35	41		
42	CONCRETE BEAM (Simple Span)	12	EA	10	2	41	100					42	43		
43	BRIDGE SLAB (with Cure)	600	SY	20	30	42	100					44	73		
44	CONCRETE RAIL (Slipform)	127	LF	100	2	43	100					74	75		
45	PERMANENT PAVEMENT														
46	CEMENT TREAT BS MATL	3780	SY	1500	3	43	100					74	76		
47	FLEX BASE	3780	SY	1500	3	46	100					77	79		
48	SEAL COAT	2	LS	1	2	47	100					80	81		
49	MBGF (INSTALL)	200	LF	100	2	48	100					82	83		
50	CONC RIPRAP (MBGF MOW STRIP)	200	LF	50	4	49	100					84	87		
51	GABIONS	300	SY	75	4	36	100					23	26		
52	PVMT MRKGS / SIGNING / OBJ MRKRS	1	LS	0.5	2	49	100					84	85		
53	TCP (Remove Detour / Open to Traffic)	1	LS	2	1	52	100					86	86		
54															
55	TURKEY CREEK														
56	PORT TEMP SIGNAL - TCP SET UP	2	LS	1	2	53	100					87	88		
57	PORT CTB / CRASH CUSHIONS	960	LF	750	2	54	100					86	87		
58	RAIL RETROFIT	150	LF	10	15	57	100					88	102		
59	MBGF (INSTALL)	200	LF	100	2	58	100					103	104		
60	CONC RIPRAP (MBGF MOW STRIP)	200	LF	50	4	59	100					105	108		
61	PVMT MRKGS / SIGNING / OBJ MRKRS	1	LS	0.5	2	59	100					105	106		



Contract Time Estimate

Rd: FM 219

County: BOSQUE

CSJ: 1054-02-023

Project: F 2023(363)

Days / Cell = **2**

TASK #	Description	Quantity	Unit	Daily Rate	Duration	Pred Task	% Complete	Pred Task	% Complete	Pred Task	% Complete	Start Day	Finish Day
62													
63	PHASE 3 - FM 219 PAVEMENT REHAB												
64	PARALLEL DRAINAGE												
65	RC PIPE - PARALLEL CULVERTS	1132	LF	100	12	61	100					107	118
66	HEADWALL / SETS	66	EA	3	22	65	50					113	134
67													
68	BASE PREPARATIONS												
69	REWORK BASE MATERIAL	14224	CY	500	29	61	100					107	135
70	CEMENT TREATED BASE (8")	116988	SY	2500	47	69	25					115	161
71	FLEXBASE (6")	31115	CY	750	42	70	25					127	168
72	PRIME COAT (EMULSION)	49474	GAL	6000	9	71	90					165	173
73	SEAL COAT	116988	SY	14000	9	72	50					170	178
74	WRK ZN PAV MRKGS	140671	LF	15000	10	73	50					175	184
75													
76	MAILBOXES ASSEMBLIES	35	EA	4	9	74	100					185	193
77													
78	SIDE STREET / DRIVEWAYS	5857	SY	200	30	74	100					185	214
79													
80	METAL BEAM GUARD FENCE / SGTs / SRs	200	LF	300	1	78	100					215	215
81	CONC RIPRAP (MBGF MOW STRIP)	200	LF	150	2	80	100					216	217
82													
83	PHASE 4 - FINAL SURFACE AND CONSTRUCTION												
84	HOT MIX ASPHALT SURFACE												
85	MAIN LANE HMAC OVERLAY	12061	TON	1000	13	78	100					215	227
86	DRIVEWAYS, INTERSECTIONS & TURNOUTS	653	TON	500	2	85	100					228	229
87													
88	PERM PAVEMENT MARKINGS												
89	PAVEMENT MARKING (THERMO)	117479	LF	25000	5	86	100					230	234
90	PAVEMENT MARKING (BUTTONS/MARKERS)	780	EA	1000	1	89	100					235	235
91	MILLED RUMBLE STRIPS (CENTER)	31789	LF	20000	2	89	100					235	236
92	MILLED RUMBLE STRIPS (SHOULDER)	63697	LF	15000	5	91	100					237	241
93													
94	REMOVE SMALL SIGNS	87	EA	25	4	86	100					230	233
95	SMALL SIGNS / OMs	85	EA	25	4	94	100					234	237
96	SHOULDER UP AND SEEDING	231886	SY	3500	67	85	25					219	285
97	FINAL CLEAN UP	1	LS	0.15	7	96	100					286	292
98													

