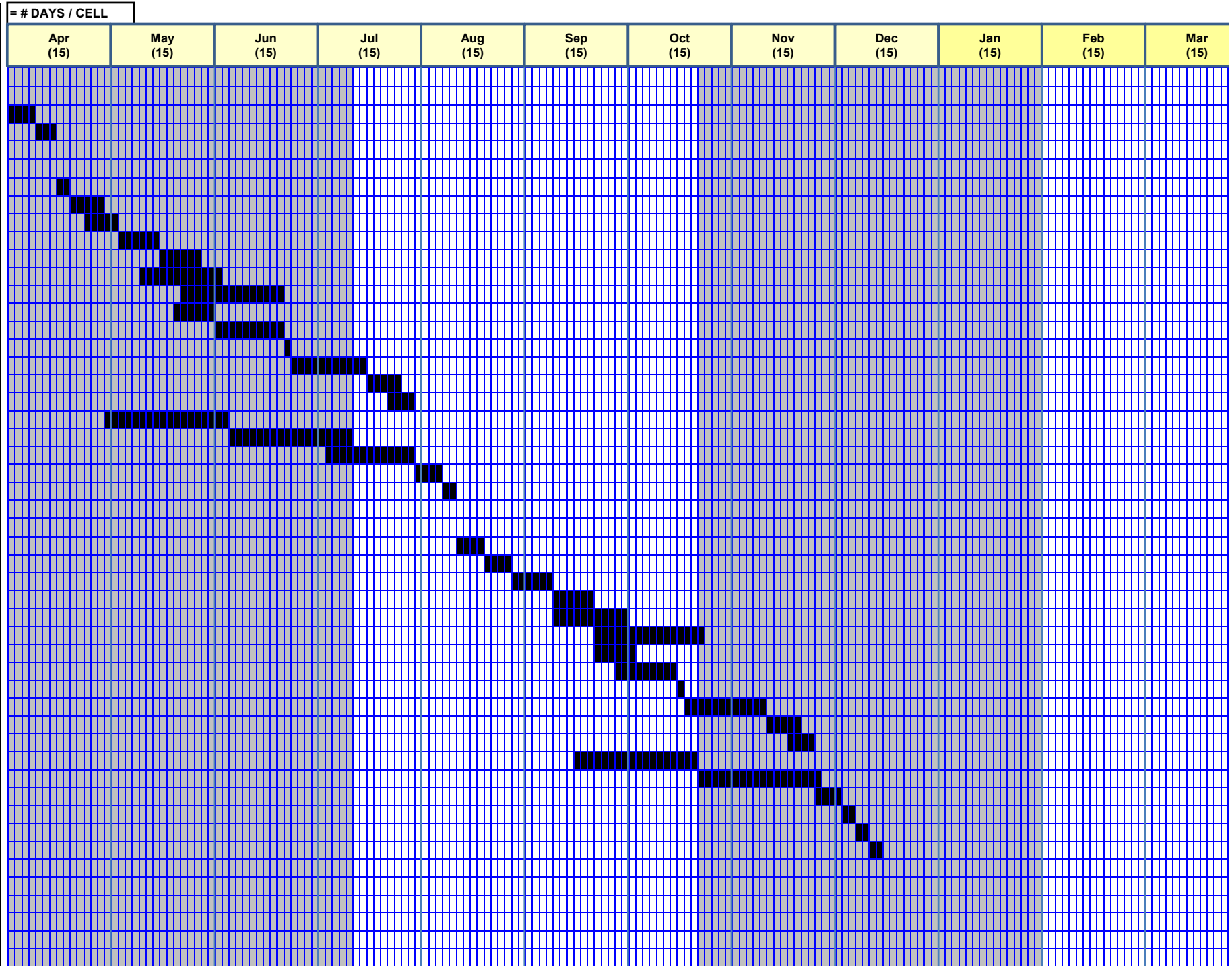


Contract Time Estimate

Rd: SH 95 County: Bell
 CSJ: CSJ 0320-02-040 Project: Runnels Creek

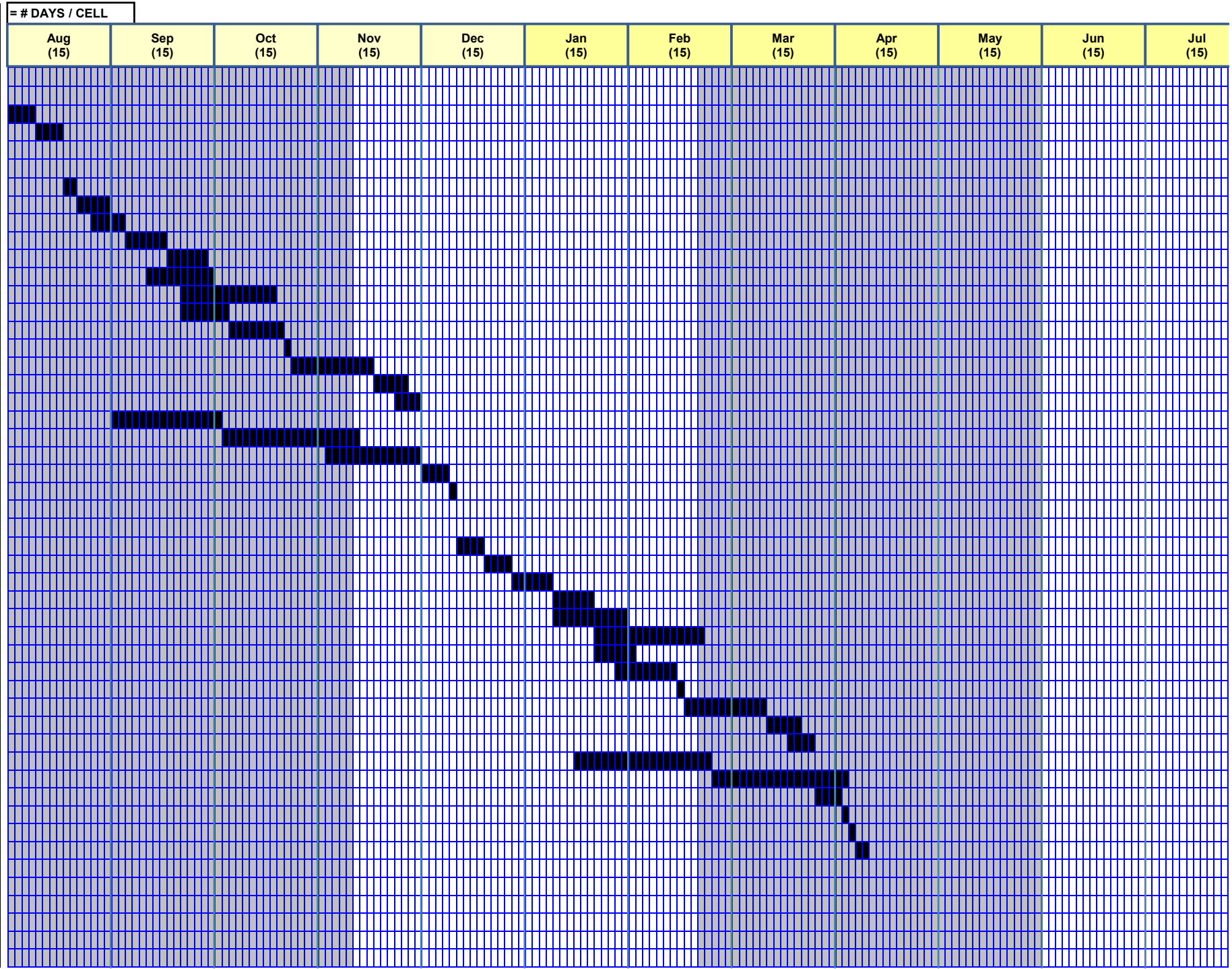
TASK #	Description	Quantity	Unit	Daily Rate	Duration	Pred Task	% Comp	Pred Task	% Comp	Pred Task	% Comp	Start Day	Finish Day
1	SH 95 at Runnels Creek	-											
2	Phase 0												
3	INITIAL TCP / MOBILITY	1	LOC	0.25	4		100					1	4
4	PREP ROW / SW3P	8	STA	3	3	3	100					5	7
5													
6	PHASE 1												
7	TCP SWITCH	1	LOC	0.5	2	4	100					8	9
8	REMOVE EXIST BRIDGE	1	EA	0.2	5	7	100					10	14
9	TEMPORARY SPL SHORING	711	SF	150	5	8	25					12	16
10	DRILLED SHAFT (ABUTS)	192	LF	35	6	9	100					17	22
11	DRILLED SHAFT (BENTS)	135	LF	25	6	10	100					23	28
12	ABUT CONC	48	CY	4	12	10	50					20	31
13	ABUT STONE RIPRAP	673	CY	45	15	12	50					26	40
14	BENT COL CONC	17	CY	3	6	11	33					25	30
15	BENT CAP CONC	39	CY	4	10	14	100					31	40
16	PRES CONC I-GIRDERS	753	LF	800	1	15	100					41	41
17	190' PCG UNIT	5,384	SF	500	11	16	100					42	52
18	SUPERSTRUCTURE CURING	1	LOC	0.2	5	17	100					53	57
19	TYPE SSTR	226	LF	75	4	18	60					56	59
20	EMBANKMENT/EXCAVATION	1,718	CY	100	18	8	100					15	32
21	ROADWAY PAVEMENT	2,165	SY	125	18	20	100					33	50
22	CONSTRUCTING DETOURS	634	SY	50	13	21	75					47	59
23	MBGF W/ SGT'S	250	LF	75	4	22	100					60	63
24	SEEDING / SODDING	5,038	SY	4000	2	23	100					64	65
25													
26	PHASE 2												
27	TCP SWITCH	1	LOC	0.25	4	24	100					66	69
28	REMOVE EXIST BRIDGE	1	EA	0.25	4	27	100					70	73
29	DRILLED SHAFT (ABUTS)	192	LF	35	6	28	100					74	79
30	DRILLED SHAFT (BENTS)	135	LF	25	6	29	100					80	85
31	ABUT CONC	44	CY	4	11	29	100					80	90
32	ABUT STONE RIPRAP	689	CY	45	16	31	50					86	101
33	BENT COL CONC	17	CY	3	6	30	100					86	91
34	BENT CAP CONC	35	CY	4	9	33	50					89	97
35	PRES CONC I-GIRDERS	565	LF	600	1	34	100					98	98
36	190' PCG UNIT	5,700	SF	500	12	35	100					99	110
37	SUPERSTRUCTURE CURING	1	LOC	0.2	5	36	100					111	115
38	TYPE SSTR	226	LF	75	4	37	60					114	117
39	EMBANKMENT/EXCAVATION	1,718	CY	100	18	31	25					83	100
40	ROADWAY PAVEMENT	2,165	SY	125	18	39	100					101	118
41	MBGF W/ SGT'S	250	LF	75	4	38	100					118	121
42	SEEDING / SODDING	5,038	SY	4000	2	41	100					122	123
43	SIGNING / STRIPING	5,560	LF	5000	2	42	100					124	125
44	REMOVE TCP	1	LOC	0.5	2	43	100					126	127
45													
46													
47													
48													
49													
50													



Contract Time Estimate

Rd: SH 95 County: Bell
 CSJ: CSJ 0320-02-041 Project: Cathey Creek

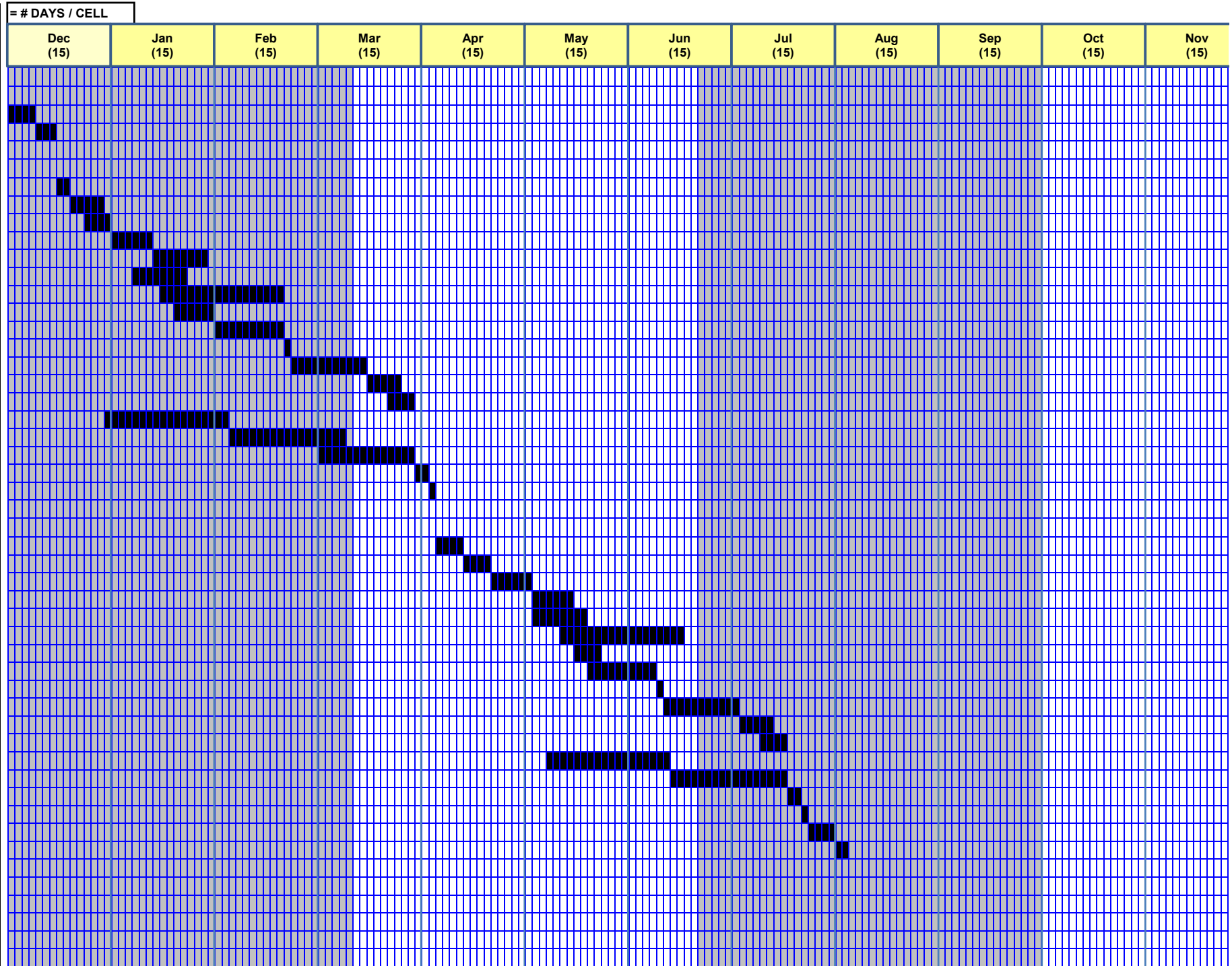
TASK #	Description	Quantity	Unit	Daily Rate	Duration	Pred Task	% Comp	Pred Task	% Comp	Pred Task	% Comp	Start Day	Finish Day
1	SH 95 at Cathey Creek	-											
2	Phase 0												
3	INITIAL TCP / MOBILITY	1	LOC	0.25	4		100					1	4
4	PREP ROW / SW3P	9	STA	3	4	3	100					5	8
5													
6	PHASE 1												
7	TCP SWITCH	1	LOC	0.5	2	4	100					9	10
8	REMOVE EXIST BRIDGE	1	EA	0.2	5	7	100					11	15
9	TEMPORARY SPL SHORING	433	SF	100	5	8	25					13	17
10	DRILLED SHAFT (ABUTS)	270	LF	45	6	9	100					18	23
11	DRILLED SHAFT (BENTS)	201	LF	40	6	10	100					24	29
12	ABUT CONC	38	CY	4	10	10	50					21	30
13	ABUT STONE RIPRAP	416	CY	30	14	12	50					26	39
14	BENT COL CONC	20	CY	3	7	11	33					26	32
15	BENT CAP CONC	32	CY	4	8	14	100					33	40
16	PRES CONC I-GIRDERS	834	LF	850	1	15	100					41	41
17	210' PCG UNIT	5,950	SF	500	12	16	100					42	53
18	SUPERSTRUCTURE CURING	1	LOC	0.2	5	17	100					54	58
19	TYPE SSTR	238	LF	75	4	18	60					57	60
20	EMBANKMENT/EXCAVATION	1,992	CY	125	16	8	100					16	31
21	ROADWAY PAVEMENT	2,388	SY	125	20	20	100					32	51
22	CONSTRUCTING DETOURS	765	SY	55	14	21	75					47	60
23	MBGF W/ SGT'S	330	LF	100	4	22	100					61	64
24	SEEDING / SODDING	3,387	SY	4000	1	23	100					65	65
25													
26	PHASE 2												
27	TCP SWITCH	1	LOC	0.25	4	24	100					66	69
28	REMOVE EXIST BRIDGE	1	EA	0.25	4	27	100					70	73
29	DRILLED SHAFT (ABUTS)	192	LF	35	6	28	100					74	79
30	DRILLED SHAFT (BENTS)	135	LF	25	6	29	100					80	85
31	ABUT CONC	44	CY	4	11	29	100					80	90
32	ABUT STONE RIPRAP	689	CY	45	16	31	50					86	101
33	BENT COL CONC	17	CY	3	6	30	100					86	91
34	BENT CAP CONC	35	CY	4	9	33	50					89	97
35	PRES CONC I-GIRDERS	565	LF	600	1	34	100					98	98
36	190' PCG UNIT	5,700	SF	500	12	35	100					99	110
37	SUPERSTRUCTURE CURING	1	LOC	0.2	5	36	100					111	115
38	TYPE SSTR	226	LF	75	4	37	60					114	117
39	EMBANKMENT/EXCAVATION	1,992	CY	100	20	31	25					83	102
40	ROADWAY PAVEMENT	2,388	SY	125	20	39	100					103	122
41	MBGF W/ SGT'S	330	LF	100	4	38	100					118	121
42	SEEDING / SODDING	3,387	SY	4000	1	41	100					122	122
43	SIGNING / STRIPING	4,810	LF	5000	1	42	100					123	123
44	REMOVE TCP	1	LOC	0.5	2	43	100					124	125
45													
46													
47													
48													
49													
50													



Contract Time Estimate

Rd: SH 95 County: Bell
 CSJ: CSJ 0320-02-039 Project: Willow Creek

TASK #	Description	Quantity	Unit	Daily Rate	Duration	Pred Task	% Comp	Pred Task	% Comp	Pred Task	% Comp	Start Day	Finish Day
1	SH 95 at Willow Creek	-											
2	Phase 0												
3	INITIAL TCP / MOBILITY	1	LOC	0.25	4		100					1	4
4	PREP ROW / SW3P	9	STA	3	3	3	100					5	7
5													
6	PHASE 1												
7	TCP SWITCH	1	LOC	0.5	2	4	100					8	9
8	REMOVE EXIST BRIDGE	1	EA	0.2	5	7	100					10	14
9	TEMPORARY SPL SHORING	362	SF	100	4	8	25					12	15
10	DRILLED SHAFT (ABUTS)	249	LF	45	6	9	100					16	21
11	DRILLED SHAFT (BENTS)	303	LF	40	8	10	100					22	29
12	ABUT CONC	32	CY	4	8	10	50					19	26
13	ABUT STONE RIPRAP	441	CY	25	18	12	50					23	40
14	BENT COL CONC	16	CY	3	6	11	33					25	30
15	BENT CAP CONC	40	CY	4	10	14	100					31	40
16	PRES CONC I-GIRDERS	872	LF	900	1	15	100					41	41
17	220' PCG UNIT	6,234	SF	600	11	16	100					42	52
18	SUPERSTRUCTURE CURING	1	LOC	0.2	5	17	100					53	57
19	TYPE SSTR	244	LF	75	4	18	60					56	59
20	EMBANKMENT/EXCAVATION	1,758	CY	100	18	8	100					15	32
21	ROADWAY PAVEMENT	2,089	SY	125	17	20	100					33	49
22	CONSTRUCTING DETOURS	651	SY	50	14	21	75					46	59
23	MBGF W/ SGT'S	113	LF	75	2	22	100					60	61
24	SEEDING / SODDING	2,134	SY	4000	1	23	100					62	62
25													
26	PHASE 2												
27	TCP SWITCH	1	LOC	0.25	4	24	100					63	66
28	REMOVE EXIST BRIDGE	1	EA	0.25	4	27	100					67	70
29	DRILLED SHAFT (ABUTS)	249	LF	45	6	28	100					71	76
30	DRILLED SHAFT (BENTS)	202	LF	40	6	29	100					77	82
31	ABUT CONC	31	CY	4	8	29	100					77	84
32	ABUT STONE RIPRAP	445	CY	25	18	31	50					81	98
33	BENT COL CONC	11	CY	3	4	30	100					83	86
34	BENT CAP CONC	39	CY	4	10	33	50					85	94
35	PRES CONC I-GIRDERS	654	LF	900	1	34	100					95	95
36	220' PCG UNIT	6,600	SF	600	11	35	100					96	106
37	SUPERSTRUCTURE CURING	1	LOC	0.2	5	36	100					107	111
38	TYPE SSTR	244	LF	75	4	37	60					110	113
39	EMBANKMENT/EXCAVATION	1,758	CY	100	18	31	25					79	96
40	ROADWAY PAVEMENT	2,089	SY	125	17	39	100					97	113
41	MBGF W/ SGT'S	113	LF	75	2	38	100					114	115
42	SEEDING / SODDING	2,134	SY	4000	1	41	100					116	116
43	SIGNING / STRIPING	18,716	LF	5000	4	42	100					117	120
44	REMOVE TCP	1	LOC	0.5	2	43	100					121	122
45													
46													
47													
48													
49													
50													



Contract Time Estimate

Rd: SH 95 County: Bell
 CSJ: CSJ 0320-02-042 Project: Darrs Creek

TASK #	Description	Quantity	Unit	Daily Rate	Duration	Pred Task	% Comp	Pred Task	% Comp	Pred Task	% Comp	Start Day	Finish Day
1	SH 95 at Darrs Creek	-											
2	Phase 0												
3	INITIAL TCP / MOBILITY	1	LOC	0.25	4		100					1	4
4	PREP ROW / SW3P	14	STA	3	5	3	100					5	9
5													
6	PHASE 1												
7	TCP SWITCH	1	LOC	0.5	2	4	100					10	11
8	REMOVE EXIST BRIDGE	1	EA	0.15	7	7	100					12	18
9	TEMPORARY SPL SHORING	504	SF	125	5	8	25					14	18
10	DRILLED SHAFT (ABUTS)	213	LF	40	6	9	100					19	24
11	DRILLED SHAFT (BENTS)	339	LF	40	9	10	100					25	33
12	ABUT CONC	44	CY	4.5	10	10	50					22	31
13	ABUT STONE RIPRAP	668	CY	35	20	12	50					27	46
14	BENT COL CONC	26	CY	3	9	11	33					28	36
15	BENT CAP CONC	55	CY	6	10	14	100					37	46
16	PRES CONC I-GIRDERS	1,870	LF	1000	2	15	100					47	48
17	160' / 310' PCG UNITS	13,316	SF	700	20	16	100					49	68
18	SUPERSTRUCTURE CURING	1	LOC	0.2	5	17	100					69	73
19	TYPE SSTR	506	LF	150	4	18	60					72	75
20	EMBANKMENT/EXCAVATION	2,807	CY	125	23	8	100					19	41
21	ROADWAY PAVEMENT	2,980	SY	125	24	20	100					42	65
22	CONSTRUCTING DETOURS	795	SY	50	16	21	75					60	75
23	MBGF W/ SGT'S	500	LF	100	5	19	100					76	80
24	SEEDING / SODDING	2,490	SY	4000	1	23	100					81	81
25													
26	PHASE 2												
27	TCP SWITCH	1	LOC	0.25	4	24	100					82	85
28	REMOVE EXIST BRIDGE	1	EA	0.2	5	27	100					86	90
29	DRILLED SHAFT (ABUTS)	213	LF	40	6	28	100					91	96
30	DRILLED SHAFT (BENTS)	226	LF	40	6	29	100					97	102
31	ABUT CONC	42	CY	4.5	10	29	100					97	106
32	ABUT STONE RIPRAP	633	CY	35	19	31	50					102	120
33	BENT COL CONC	17	CY	3	6	30	100					103	108
34	BENT CAP CONC	49	CY	5	10	33	50					106	115
35	PRES CONC I-GIRDERS	1,403	LF	1000	2	34	100					116	117
36	160' / 310' PCG UNITS	14,100	SF	700	21	35	100					118	138
37	SUPERSTRUCTURE CURING	1	LOC	0.2	5	36	100					139	143
38	TYPE SSTR	506	LF	150	4	37	60					142	145
39	EMBANKMENT/EXCAVATION	2,807	CY	150	19	31	25					100	118
40	ROADWAY PAVEMENT	2,980	SY	125	24	39	100					119	142
41	MBGF W/ SGT'S	500	LF	100	5	38	100					146	150
42	SEEDING / SODDING	2,490	SY	4000	1	41	100					151	151
43	SIGNING / STRIPING	10,367	LF	5000	3	41	100					151	153
44	REMOVE TCP	1	LOC	0.5	2	43	100					154	155
45	FINAL CLEAN UP	1	LOC	0.25	4	44	100					156	159
46													
47													
48													
49													
50													

