

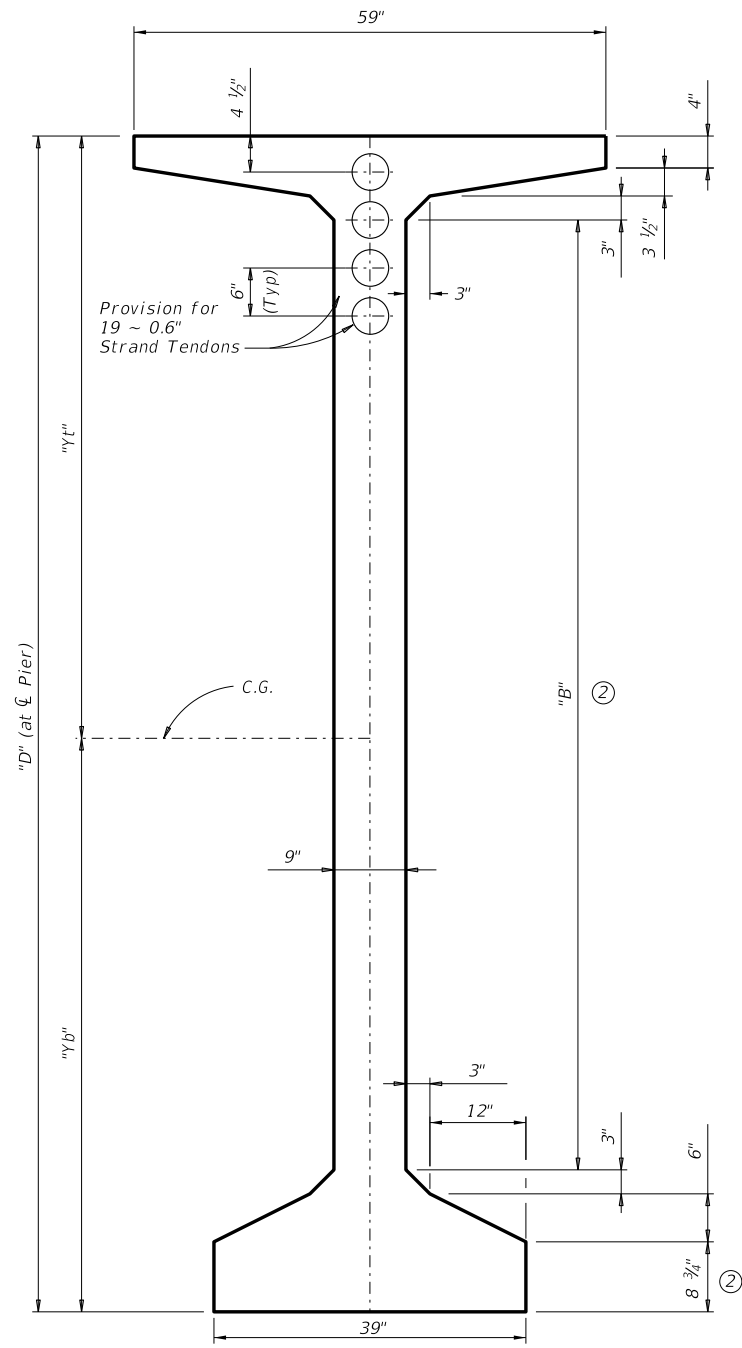
DISCLAIMER:
The use of this standard is governed by the "Texas Engineering Practice Act". No warranty of any kind is made by TxDOT for any purpose whatsoever. TxDOT assumes no responsibility for the conversion of this standard to other formats or for incorrect results or damages resulting from its use.

DATE:
FILE:

GIRDER DIMENSIONS AND SECTION PROPERTIES

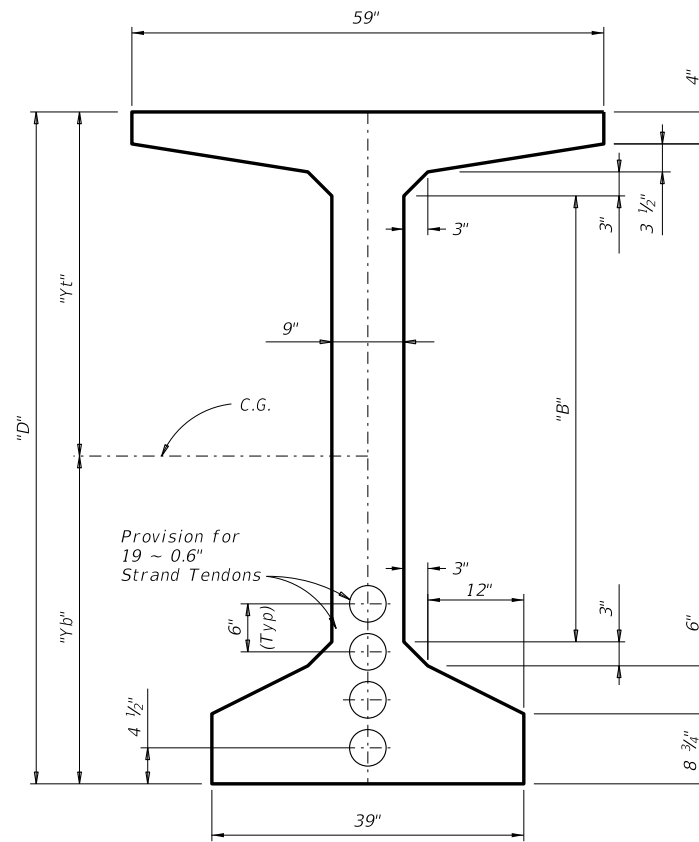
Girder Type	"D"	"B"	"y _t "	"y _b "	Area	"I _x "	"I _y "	Weight ④
	(in.)	(in.)	(in.)	(in.)	(in. ²)	(in. ⁴)	(in. ⁴)	(plf)
Tx84	84	55.75	43.16	40.84	1,358	1,338,646	137,439	1,509
STx7	84	55.75	43.08	40.92	1,442	1,390,146	219,439	1,602
STx8	96	67.75	49.28	46.72	1,550	1,937,216	220,168	1,722
STx9	108	79.75	55.46	52.54	1,658	2,595,808	220,897	1,842
HSTx12 ②	147	118.75	75.41	71.59	2,009	5,600,633	223,267	2,232
HSTx14 ②	168	139.75	86.09	81.91	2,198	7,834,345	224,542	2,442
HSTx16 ②	192	163.75	98.26	93.74	2,414	10,983,036	226,000	2,682

④ Based on 0.160 kcf



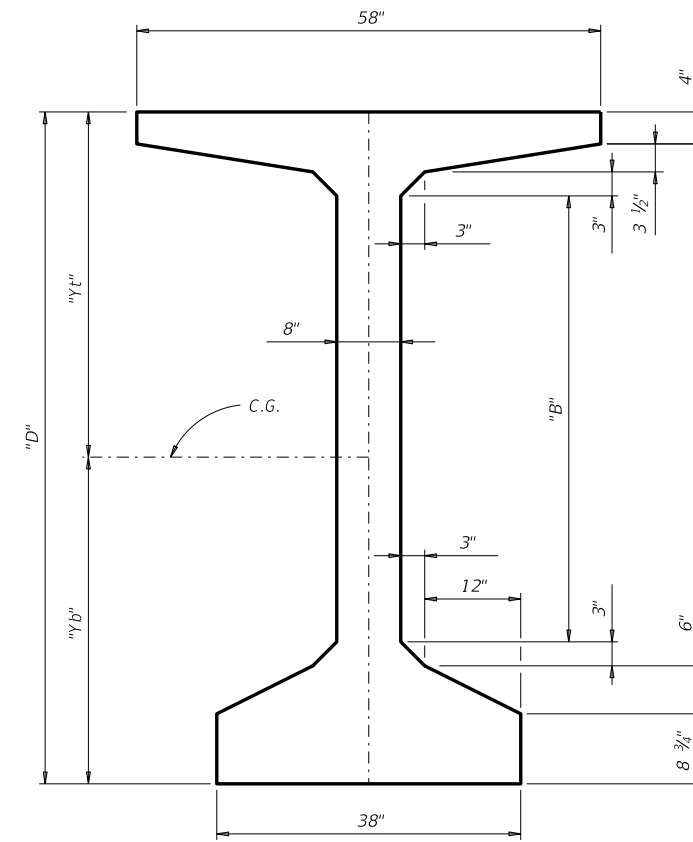
Type HSTx12, HSTx14 & HSTx16 ③

(For spliced applications)



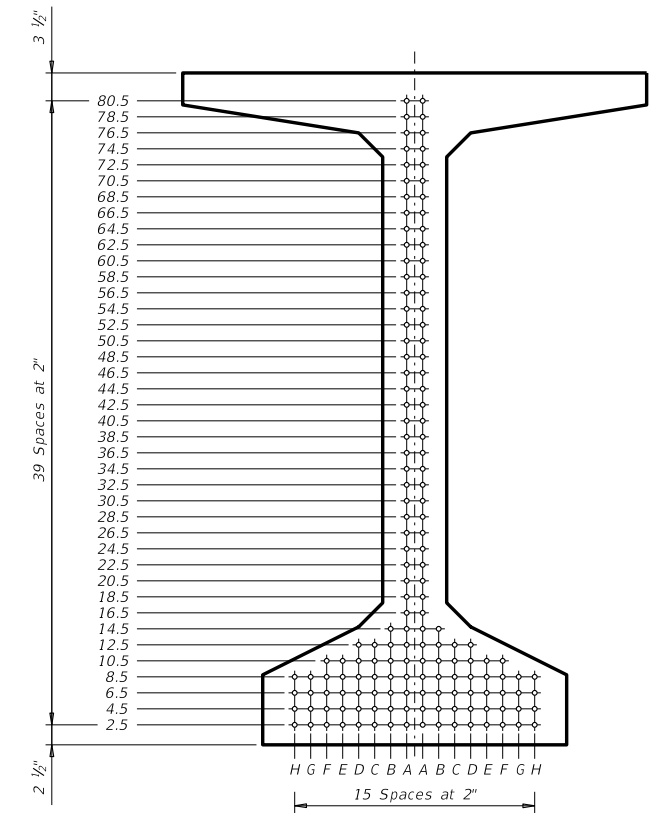
Type STx7, STx8 & STx9 ③

(For spliced applications)



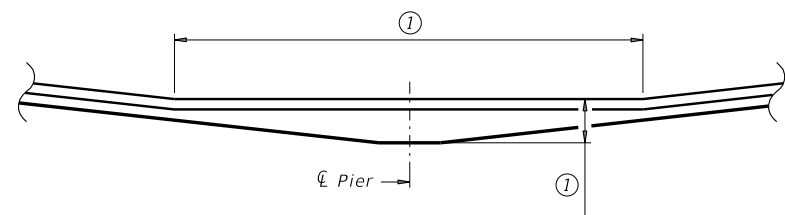
Type Tx84

(Pretensioned, for non-spliced applications)



Type Tx84

(Showing strand pattern)



THICKENING ALLOWANCE

Formwork to allow for contingent usage of bottom flange thickening in variable depth section as shown.

- ① Dimension selected by Engineer.
- ② Adjust dimensions and section properties if Thickening Allowance is used.
- ③ Contact TxDOT Bridge Division for preliminary pretension strand patterns.

GENERAL NOTES:
Designed according to AASHTO LRFD Bridge Design Specifications.

PRELIMINARY
SUBJECT TO REVISION

This document is released for informational purposes only, on 10/14/22. This sheet is to be used as a guide for project-specific details. It is not to be used for regulatory approval, permit, bidding, or construction purposes.

HL93 LOADING



LONG SPAN PRECAST I-GIRDER SECTIONS

FILE: long span i-girder.dgn	DN: TxDOT	CK: TxDOT	DW: TxDOT	CK: TxDOT
CONT	SECT	JOB	HIGHWAY	
REVISIONS				
Rev. 8/19 Webs/Flanges narrowed by 1" for spliced girders	DIST	COUNTY	SHEET NO.	