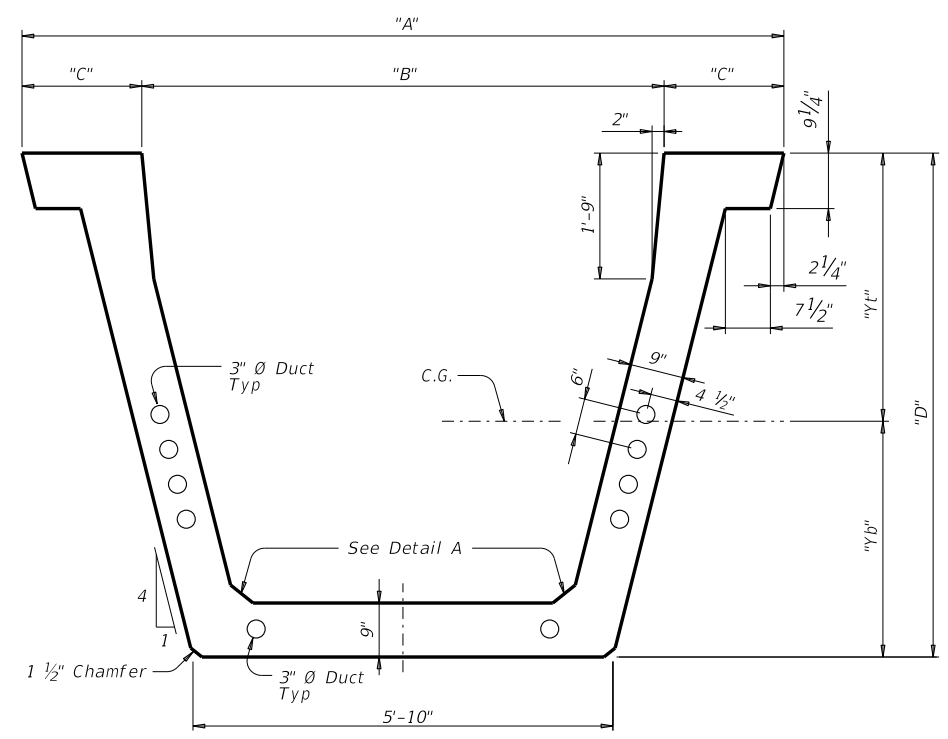


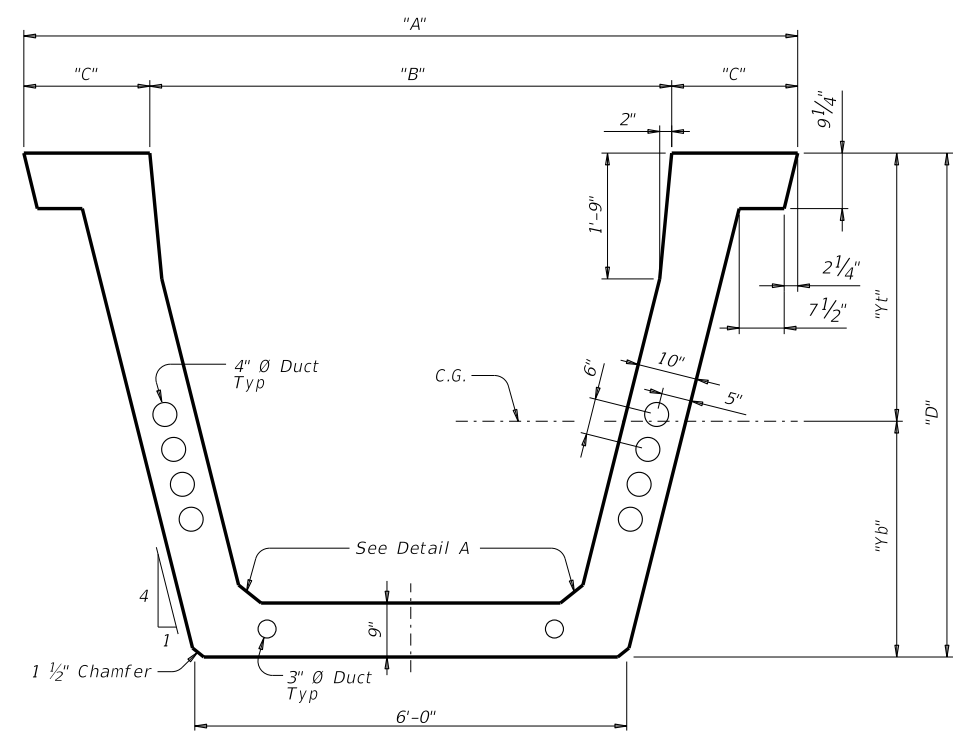
DISCLAIMER:
The use of this standard is governed by the "Texas Engineering Practice Act". No warranty of any kind is made by TxDOT for any purpose whatsoever. TxDOT assumes no responsibility for the conversion of this standard to other formats or for incorrect results or damages resulting from its use.

Girder Type	"A"	"B"	"C"	"D"	"Yt"	"Yb"	Area	"Ix"	"Iy"	Weight ①
	(ft-in.)	(ft-in.)	(ft-in.)	(ft-in.)	(in.)	(in.)	(in. ²)	(in. ⁴)	(in. ⁴)	(plf)
U72-9	10'-1"	6'-9"	1'-8"	6'-0"	39.91	32.09	2,037	1,242,461	2,787,978	2,263
U84-9	10'-7"	7'-3"	1'-8"	7'-0"	46.19	37.81	2,260	1,862,691	3,396,907	2,511
U96-9	11'-1"	7'-9"	1'-8"	8'-0"	52.41	43.59	2,482	2,645,338	4,072,397	2,758
U72-10	10'-3"	6'-9"	1'-9"	6'-0"	39.51	32.49	2,185	1,312,653	3,098,940	2,428
U84-10	10'-9"	7'-3"	1'-9"	7'-0"	45.74	38.26	2,432	1,972,138	3,781,971	2,702
U96-10	11'-3"	7'-9"	1'-9"	8'-0"	51.93	44.07	2,680	2,806,535	4,539,083	2,978

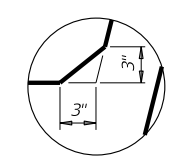
① Based on 0.160 kcf



Type U72-9, U84-9 & U96-9



Type U72-10, U84-10 & U96-10



DETAIL A

GENERAL NOTES:
Designed according to AASHTO LRFD Specifications.
Contact TxDOT Bridge Division for preliminary pretension strand patterns.

PRELIMINARY
SUBJECT TO REVISION
This document is released for informational purposes only, on 10/14/22. This sheet is to be used as a guide for project-specific details. It is not to be used for regulatory approval, permit, bidding, or construction purposes.

HL93 LOADING

Texas Department of Transportation
Bridge Division

**LONG SPAN
PRECAST U-GIRDER
SECTIONS
STRAIGHT & CURVED**

FILE: long span u-girder.dgn	DN: TxDOT	CK: TxDOT	DW: TxDOT	CK: TxDOT
©TxDOT November 2013	CONT	SECT	JOB	HIGHWAY
REVISIONS				
DIST	COUNTY			SHEET NO.

DATE:
FILE: