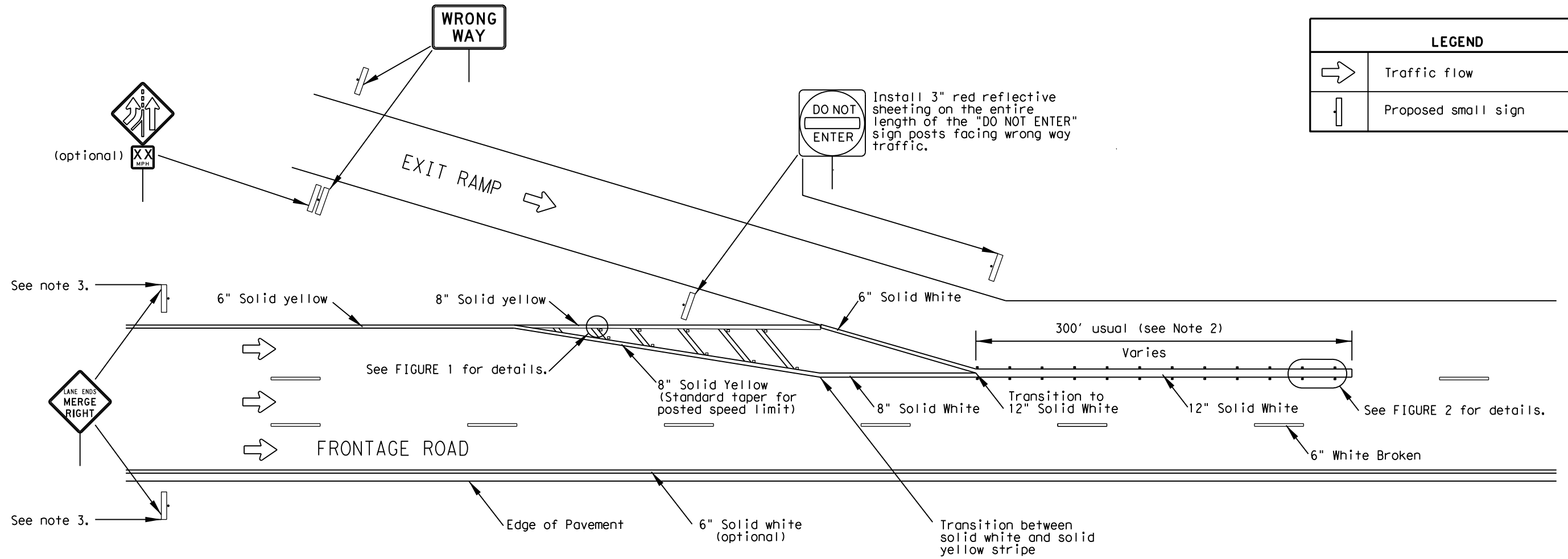


# TYPICAL PAVEMENT MARKINGS FREEWAY EXIT TO 3 LANE FRONTAGE RD.



LEGEND	
➔	Traffic flow
⏏	Proposed small sign

**NOTES**

- 1). FOR 2 LANE FRONTAGE ROADS, EXITING VOLUME VERSUS FRONTAGE ROAD VOLUME WITH A 2:1 RATIO SHALL HAVE THE SAME PAVEMENT MARKINGS. ALL OTHER CONDITIONS SHALL BE SIGNED AS A YIELD CONDITION.
- 2). LENGTH OF 12" WHITE LINE MAY VARY DEPENDING ON LOCATION.
- 3). REFER TO TMUTCD TABLE 2C-4 FOR ADVANCE WARNING SIGN PLACEMENT.

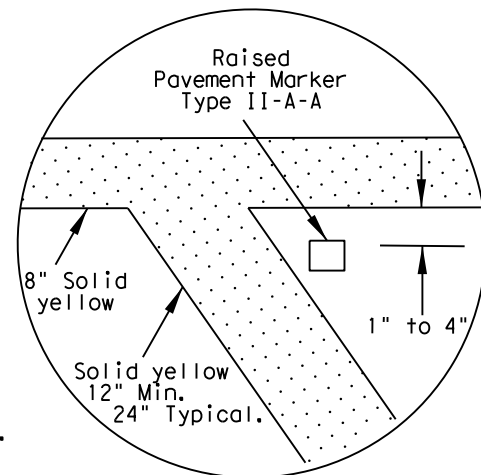


FIGURE 1

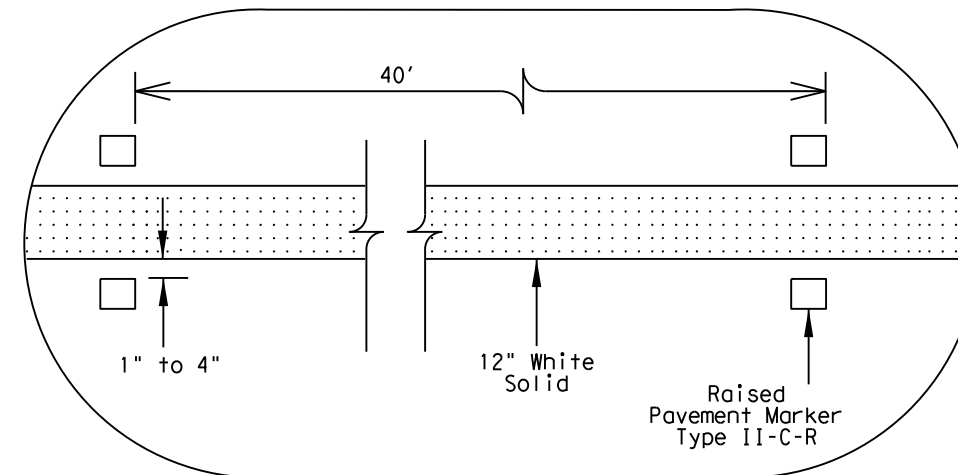


FIGURE 2



## PAVEMENT MARKINGS (EXIT TO FRONTAGE ROAD) DALLAS DISTRICT STANDARD

NOT TO SCALE

DESIGN MAA	FED. RD. DIV. NO. 6			HIGHWAY NO.
GRAPHICS MAA	STATE	DISTRICT	COUNTY	SHEET NO.
CHECK BLS	TEXAS	DALLAS		
CHECK BA	CONTROL	SECTION	JOB	