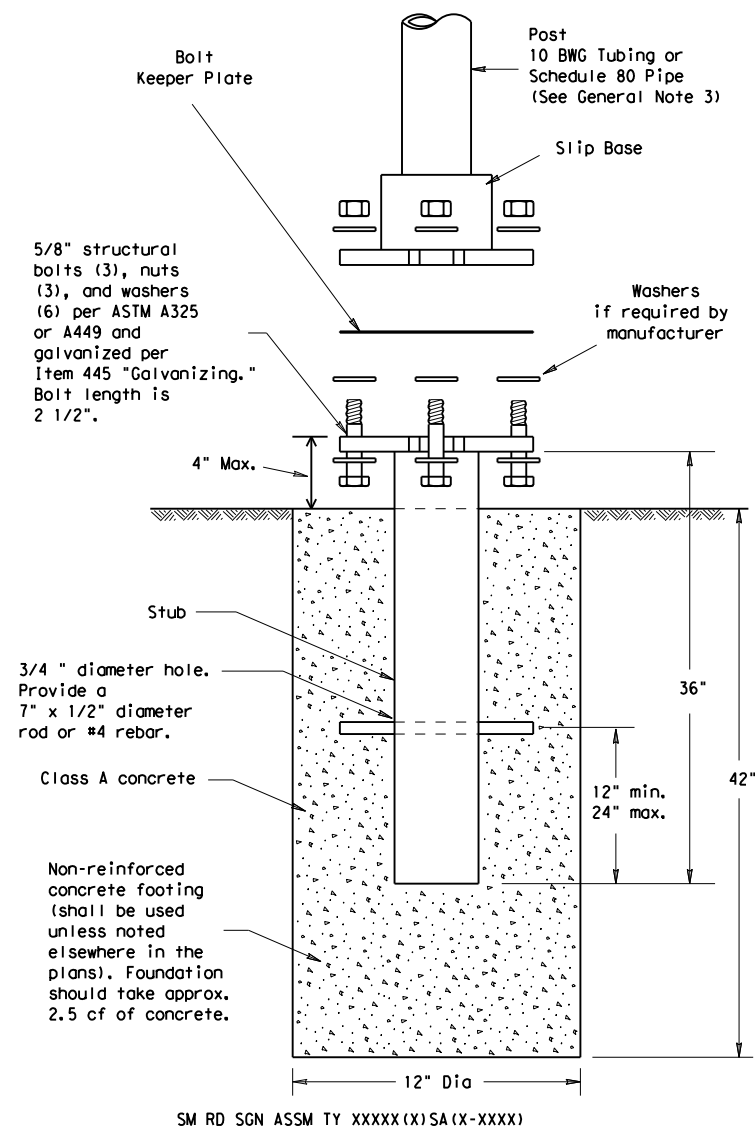
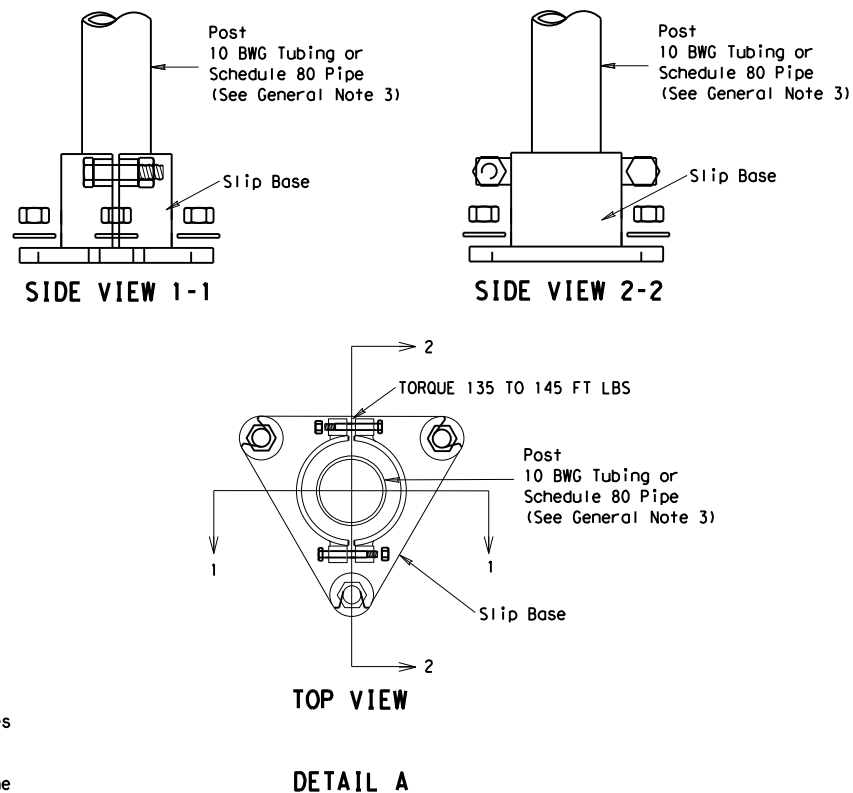


DISCLAIMER: The use of this standard is governed by the "Texas Engineering Practice Act". No warranty of any kind is made by TxDOT for any purpose whatsoever. TxDOT assumes no responsibility for the conversion of this standard to other formats or for incorrect results or damages resulting from its use.

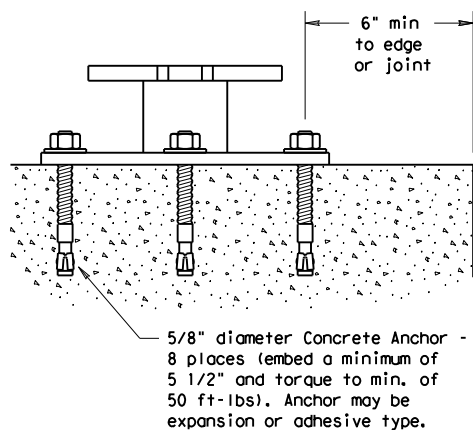
# TRIANGULAR SLIPBASE INSTALLATION GENERAL REQUIREMENTS



**NOTE**  
The devices shall be installed per manufacturers' recommendations. Installation procedures shall be provided to the Engineer by Contractor.



## CONCRETE ANCHOR



Concrete anchor consists of 5/8" diameter stud bolt with UNC series bolt threads on the upper end. Heavy hex nut per ASTM A563, and hardened washer per ASTM F436. The stud bolt shall have a minimum yield and ultimate tensile strength of 50 and 75 KSI, respectively. Nuts, bolts and washers shall be galvanized per Item 445, "Galvanizing." Adhesive type anchors shall have stud bolts installed with Type III epoxy per DMS-6100, "Epoxyes and Adhesives." Adhesive anchors may be loaded after adequate epoxy cure time per the manufacturer's recommendations. Top of bolt shall extend at least flush with top of the nut when installed. The anchor, when installed in 4000 psi normal-weight concrete with a 5 1/2" minimum embedment, shall have a minimum allowable tension and shear of 3900 and 3100 psi, respectively.

SM RD SGN ASSM TY XXXX(X)SB(X-XXXX)

## GENERAL NOTES:

- Slip base shall be permanently marked to indicate manufacturer. Method, design, and location of marking are subject to approval of the TxDOT Traffic Standards Engineer.
- Material used as post with this system shall conform to the following specifications:
  - 10 BWG Tubing (2.875" outside diameter)
    - 0.134" nominal wall thickness
    - Seamless or electric-resistance welded steel tubing or pipe
    - Steel shall be HSLAS Gr 55 per ASTM A1011 or ASTM A1008
    - Other steels may be used if they meet the following:
      - 55,000 PSI minimum yield strength
      - 70,000 PSI minimum tensile strength
      - 20% minimum elongation in 2"
    - Wall thickness (uncoated) shall be within the range of 0.122" to 0.138"
    - Outside diameter (uncoated) shall be within the range of 2.867" to 2.883"
    - Galvanization per ASTM A123 or ASTM A653 G210. For precoated steel tubing (ASTM A653), recoat tube outside diameter weld seam by metallizing with zinc wire per ASTM B833.
  - Schedule 80 Pipe (2.875" outside diameter)
    - 0.276" nominal wall thickness
    - Steel tubing per ASTM A500 Gr C
    - Other seamless or electric-resistance welded steel tubing or pipe with equivalent outside diameter and wall thickness may be used if they meet the following:
      - 46,000 PSI minimum yield strength
      - 62,000 PSI minimum tensile strength
      - 21% minimum elongation in 2"
    - Wall thickness (uncoated) shall be within the range of 0.248" to 0.304"
    - Outside diameter (uncoated) shall be within the range of 2.855" to 2.895"
    - Galvanization per ASTM A123
- See the Traffic Operations Division website for detailed drawings of sign clamps and Texas Universal Triangular Slipbase System components. The website address is: <http://www.txdot.gov/publications/traffic.htm>
- Sign supports shall not be spliced except where shown. Sign support posts shall not be spliced.

## ASSEMBLY PROCEDURE

- Foundation**
- Prepare 12-inch diameter by 42-inch deep hole. If solid rock is encountered, the depth of the foundation may be reduced such that it is embedded a minimum of 18 inches into the solid rock.
  - The Engineer may permit batches of concrete less than 2 cubic yards to be mixed with a portable, motor-driven concrete mixer. For small placements less than 0.5 cubic yards, hand mixing in a suitable container may be allowed by Engineer. Concrete shall be Class A.
  - Push the pipe end of the slip base stub into the center of the concrete. Rotate the stub back and forth while pushing it down into the concrete to assure good contact between the concrete and stub. Continue to work the stub into the concrete until it is between 2 to 4 inches above the ground.
  - Plumb the stub. Allow a minimum of 4 days to set, unless otherwise directed by the Engineer.
  - The triangular slipbase system is multidirectional and is designed to release when struck from any direction.
- Support**
- Cut support so that the bottom of the sign will be 7 to 7.5 feet above the edge of the travelway (i.e., edge of the closest lane) when slip plate is below the edge of pavement or 7 to 7.5 feet above slip plate when the slip plate is above the edge of the travelway. The cut shall be plumb and straight.
  - Attach sign to support using connections shown. When multiple signs are installed on the same support, ensure the minimum clearance between each sign is maintained. See SMD(SLIP-2) for clearances based on sign types.

ADDED DETAIL A FOR CLAMP BASE  
10-2010

Texas Department of Transportation  
Dallas District Standard

**SIGN MOUNTING DETAILS  
SMALL ROADSIDE SIGNS  
TRIANGULAR SLIPBASE SYSTEM  
SMD(SLIP-1)-08(DAL)**

© TxDOT July 2002		DN: TxDOT	CK: TxDOT	DW: TxDOT	CK: TxDOT
9-08	REVISIONS	CONT	SECT	JOB	HIGHWAY
12-10 (DISTRICT)		DIST		COUNTY	SHEET NO.
ADDED CLAMP BASE DETAIL FOR SLIP BASE INSTALLATION					