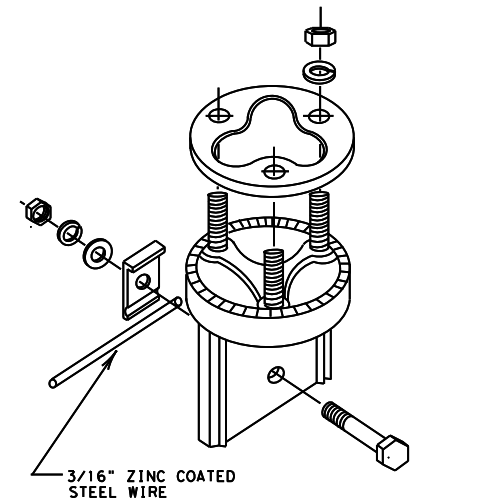
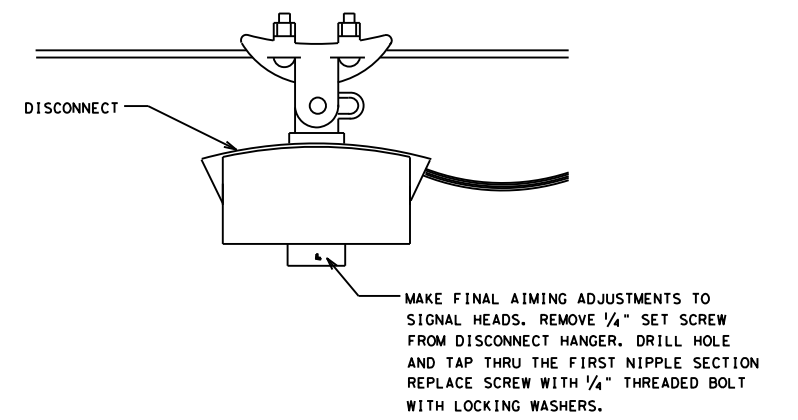


TYPICAL FLASHING BEACON INSTALLATION

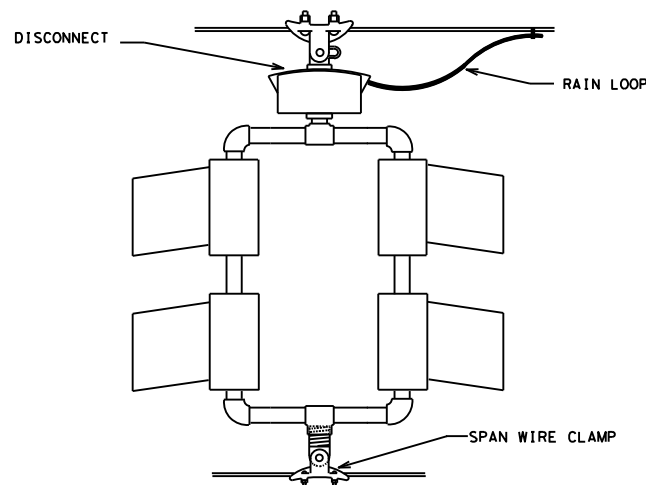


**TETHER CLAMP ASSEMBLY
TETHER CLAMP FOR ONE WAY FLASHING BEACON**

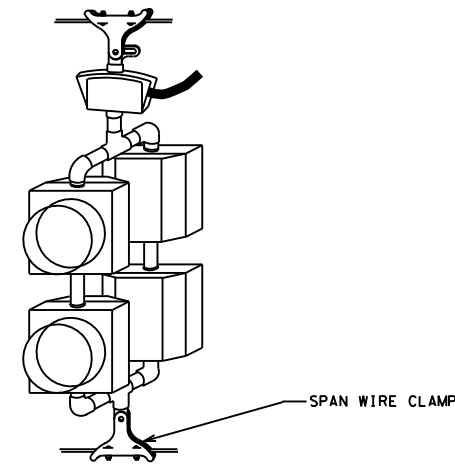
DETAIL A



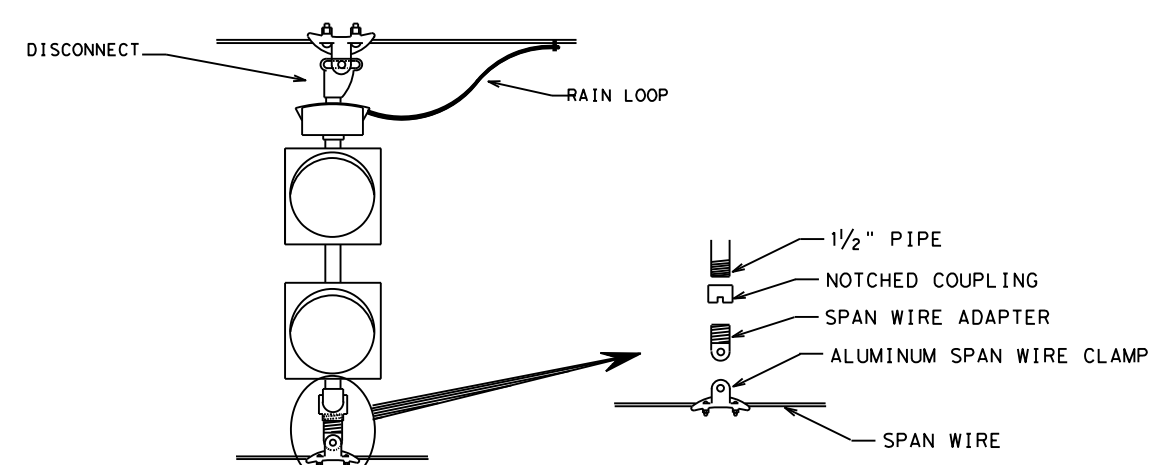
DISCONNECT HANGER MODIFICATION



TYPICAL TWO-WAY FLASHING BEACON INSTALLATION

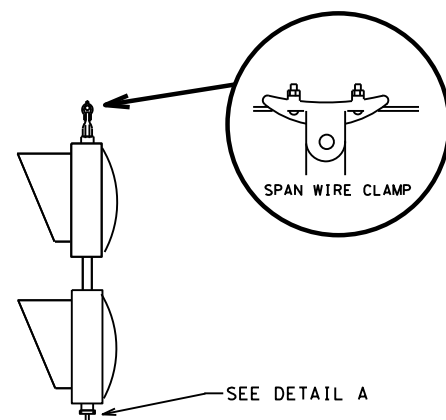


TYPICAL TWO-WAY FLASHING BEACON INSTALLATION

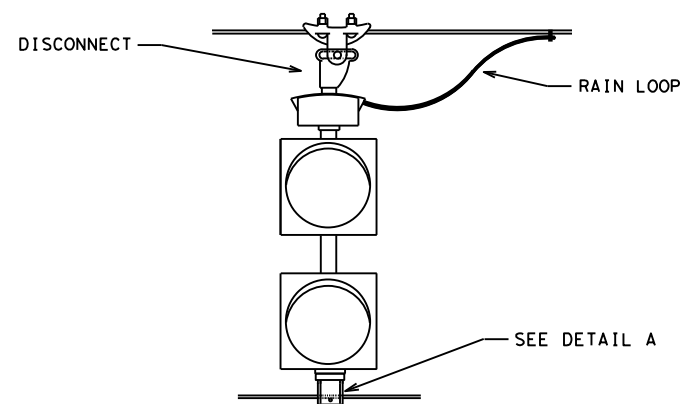


TYPICAL TWO-WAY FLASHING BEACON INSTALLATION

SPAN WIRE CLAMP



TYPICAL ONE-WAY FLASHING BEACON INSTALLATION



TYPICAL ONE-WAY FLASHING BEACON INSTALLATION

CONSTRUCTION DETAILS FOR SPAN WIRE MOUNTED FLASHING BEACONS

2 OF 2
DALLAS DISTRICT STANDARD

FED. RD. DIV. NO.	FEDERAL AID PROJECT NO.	SHEET NO.
6		
STATE	STATE DIST. NO.	COUNTY
TEXAS	DALLAS	DALLAS
CONT.	SECT.	JOB HIGHWAY NO.
\$CONT	\$SECT	*JOB \$HWY