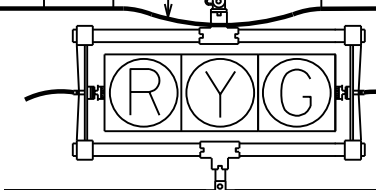


COMPRESSION FITTING

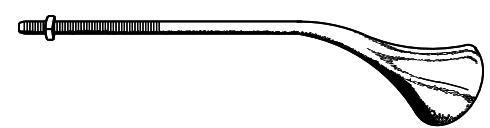
SOURCES:
RELIABLE ELECTRIC NO. 5264
FARGO NO. OR EQUAL

MINIMUM 1" SEPARATION FROM
SIGNAL HEAD MOUNTING BRACKET



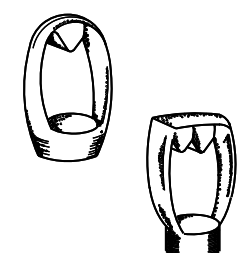
1/4" STRANDED STEEL CABLE

1/2" BLACK PLASTIC CABLE STRAPS OR
MESSENGER RINGS AT 12" CTRS.



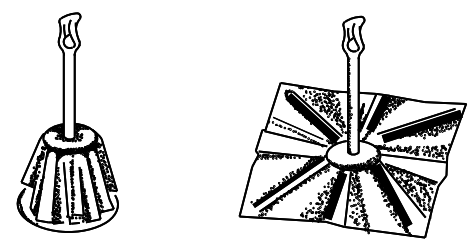
THIMBLEYE BOLT (Angle Type)

SOURCES:
HUBBELL POWER SYS. NO. 5016
MCLEAN POWER SYS. NO. J8154
OR EQUAL



EYE NUTS (Twineye & tripeye)

SOURCES:
HUBBELL POWER SYS. NO. 6560 (TWIN), 6510 (SINGLE)
MCLEAN POWER SYS. NO. J6515 (TWIN), J6510 (SINGLE)
OR EQUAL

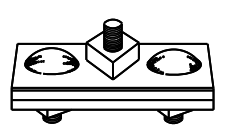


8-WAY ANCHOR

SOURCES:
HUBBELL POWER SYS. NO. 1283
MCLEAN POWER SYS. NO. J0283
OR EQUAL

LIFT PLATE

SOURCES:
HUBBELL POWER SYS. NO. 7898
MCLEAN POWER SYS. NO. J7890
OR EQUAL

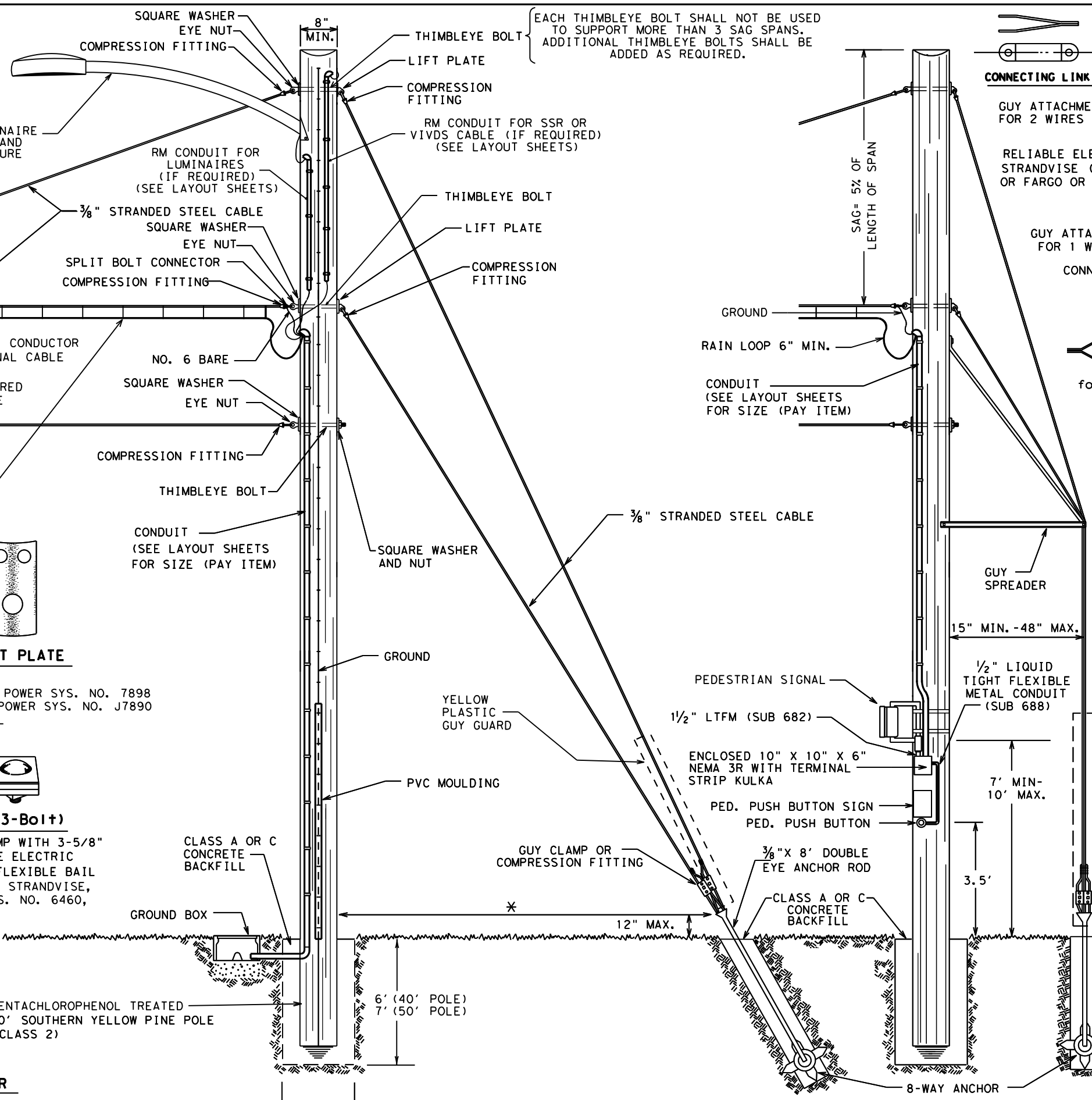


GUY CLAMP (3-Bolt)

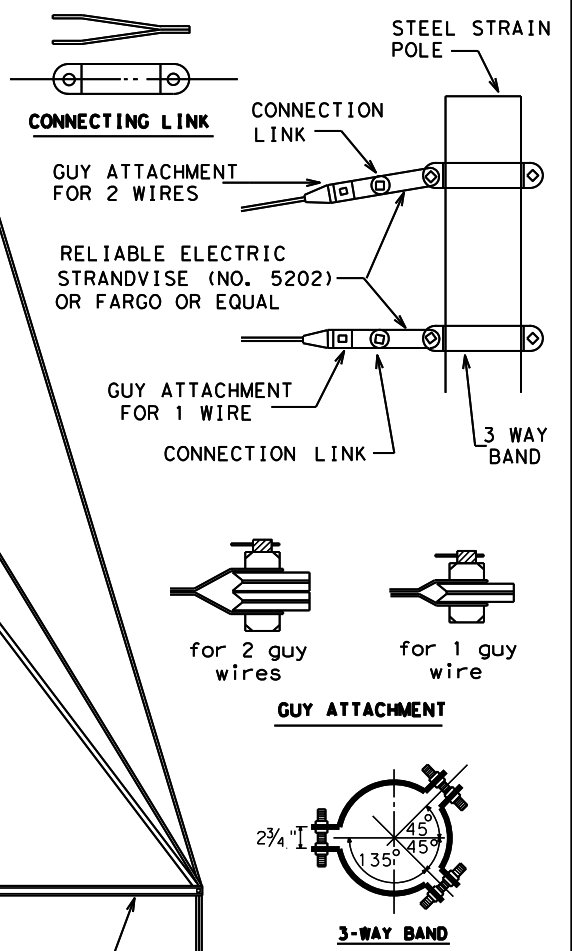
6" HEAVY GUY CLAMP WITH 3-5/8"
BOLTS OR RELIABLE ELECTRIC
STRANDWISE WITH FLEXIBLE BAIL
(NO. 5264), FARGO STRANDWISE,
HUBBELL POWER SYS. NO. 6460,
OR EQUAL

PENTACHLOROPHENOL TREATED
40' SOUTHERN YELLOW PINE POLE
(CLASS 2)

HOLE DIA = POLE DIA
AT BOTTOM + 18"



EACH THIMBLEYE BOLT SHALL NOT BE USED
TO SUPPORT MORE THAN 3 SAG SPANS.
ADDITIONAL THIMBLEYE BOLTS SHALL BE
ADDED AS REQUIRED.



SPAN CABLE ATTACHMENT DETAILS FOR STEEL STRAIN POLES

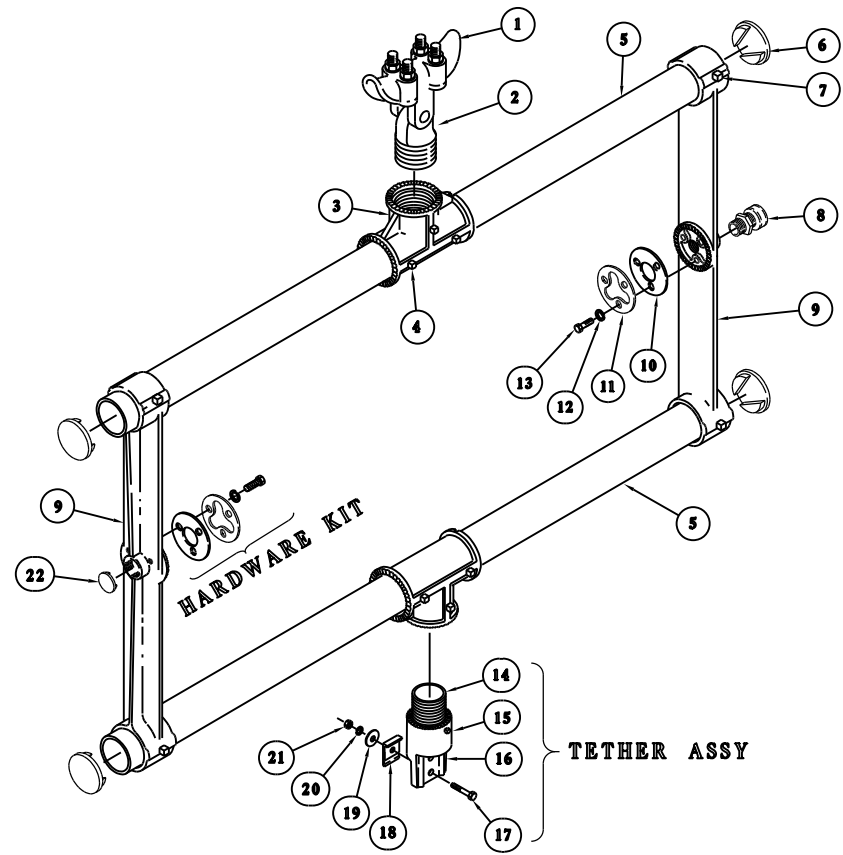
* ANCHORS SHOULD BE LOCATED
SO THAT THE DISTANCE
BETWEEN THE ANCHOR AND THE
POLE BUTT IS EQUAL TO THE
DISTANCE FROM THE GROUND
TO THE POINT OF GUY
ATTACHMENT. IN NO CASE
SHOULD THE DISTANCE FROM
THE ANCHOR TO THE POLE
BUTT BE LESS THAN 1/3 OF
THE DISTANCE FROM THE
GROUND TO THE POINT OF
GUY ATTACHMENT.

CONSTRUCTION DETAILS FOR SPAN WIRE MOUNTED TRAFFIC SIGNALS

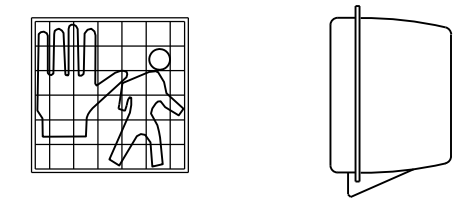
SHEET 1 OF 3
DALLAS DISTRICT STANDARD

FED. RD. DIST. NO.	FEDERAL AID PROJECT NO.	SHEET NO.
6	(SEE TITLE SHEET)	
STATE	DIST. NO.	COUNTY
TEXAS	DAL	WNTY
CONTR.	SECT.	JOB
#CONT	#SECT	#JOB
		SHRY

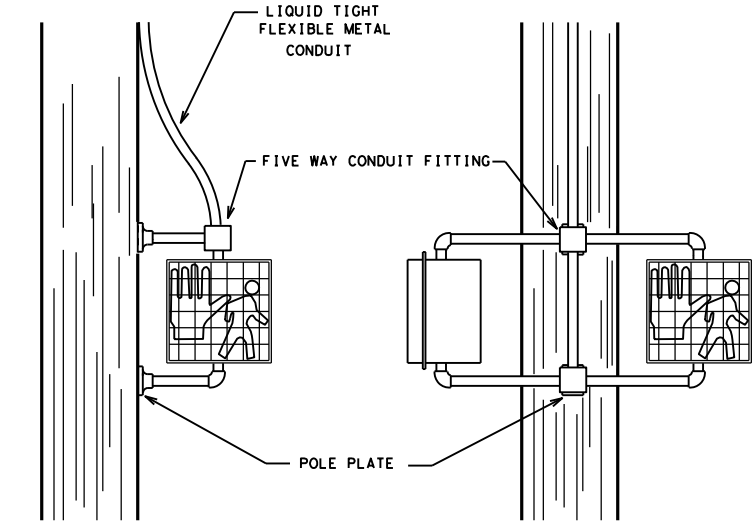
**BOTTOM TETHERED, SPAN WIRE
SIGNAL HEAD HARDWARE
ASSEMBLY (BACKPLATE NOT SHOWN)**



ITEM	DESCRIPTION	QTY
1	SPAN WIRE CLAMP, IRON, W/ U-BOLTS	1
2	SPAN WIRE ADAPTER, ALUM W/ STAINLESS BUSHING	1
3	TEE HORIZONTAL SLIP, DIE CAST ALUM	2
4	SCREW, SET SQ HD, 1/4"-20 X 1/2", STAINLESS	6
5	TUBE, 1/2" X LENGTH, ALUM	2
6	TUBE CAP, 1/2", PLASTIC	4
7	SCREW, SET SQ HD, 5/16"-18 X 5/8", STAINLESS	8
8	CGB, 3/4" .55-.65, ZINC 1	1
9	CAST ARM, FOR HORIZONTAL MOUNTED SIGNAL, ALUM	2
10	GASKET, TRI-BOLT, 1/16" X 70 DURO NEOPRENE	2
11	WASHER, SLOTTED, ZINC 2	2
12	WASHER, LOCK SPLIT, 1/4", STAINLESS	6
13	BOLT, HEX HD, 1/4"-20 X 1/2", GRADE 5, STAINLESS	6
14	NIPPLE, ALLTHREAD, 1/2" NPS X 2.13", ALUM	1
15	SCREW, SET SQ HD, 1/4"-20 X 5/8", STAINLESS	1
16	BODY, 1/2", HANGER, ALUM	1
17	BOLT, HEX HD, 5/16"-18 X 1 1/2", STAINLESS	1
18	PLATE, TETHER, 1-HOLE, ALUM	1
19	WASHER, FENDER, 5/16", STAINLESS	1
20	WASHER, SPLIT LOCK, 5/16", STAINLESS	1
21	NUT, HEX HD, 5/16"-18, STAINLESS	1
22	CAP, EN-3/4, BLUE (FOR CGB)	1

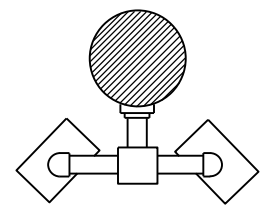


"EGGCRATE" VISOR PEDESTRIAN SIGNAL
WITH ONE-PIECE REFLECTOR



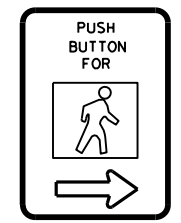
152A
ONE-WAY
ADJUSTABLE FACE SIGNAL FOR
WOOD POLE MOUNTING

143C
TWO-WAY
ADJUSTABLE FACE SIGNAL FOR
WOOD POLE MOUNTING

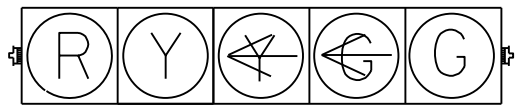


143C
PLAN VIEW

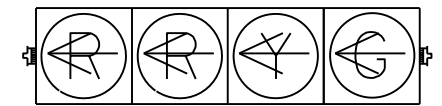
SIGN R10-4bR
SIGN R10-4bL
9"X12"



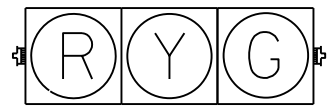
PEDESTRIAN PUSHBUTTON
SIGN DETAILS



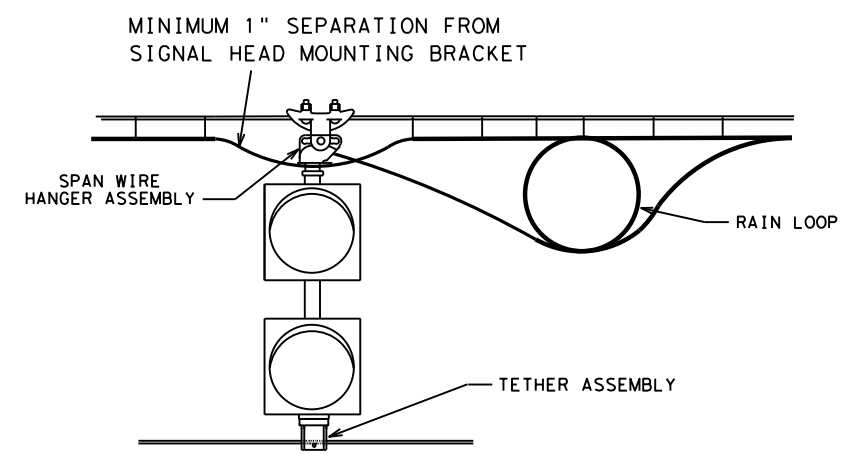
H5LT
TYPICAL SPAN WIRE
HORIZONTAL MOUNT
INSTALLATION



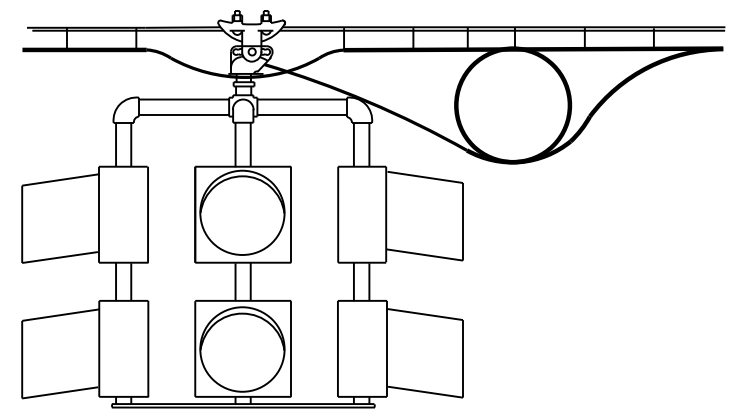
H4LT
TYPICAL SPAN WIRE
HORIZONTAL MOUNT
INSTALLATION



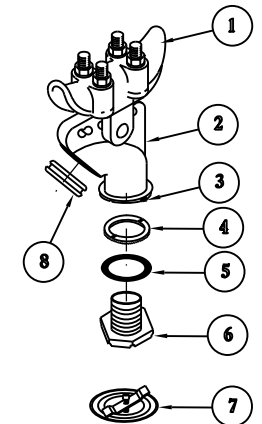
H3
TYPICAL SPAN WIRE
HORIZONTAL MOUNT
INSTALLATION



**TYPICAL
ONE-WAY FLASHING BEACON
INSTALLATION**



**TYPICAL
FOUR-WAY FLASHING BEACON
INSTALLATION**

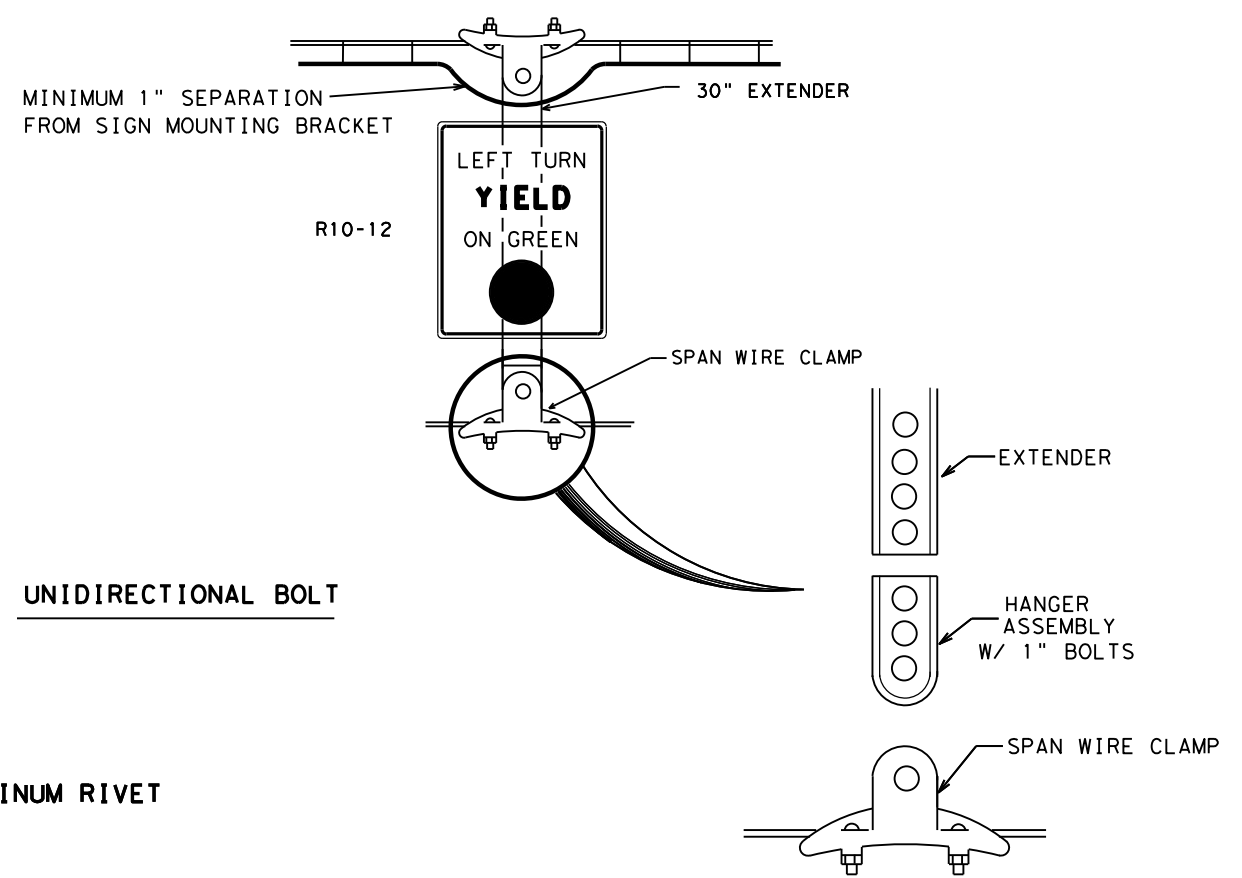
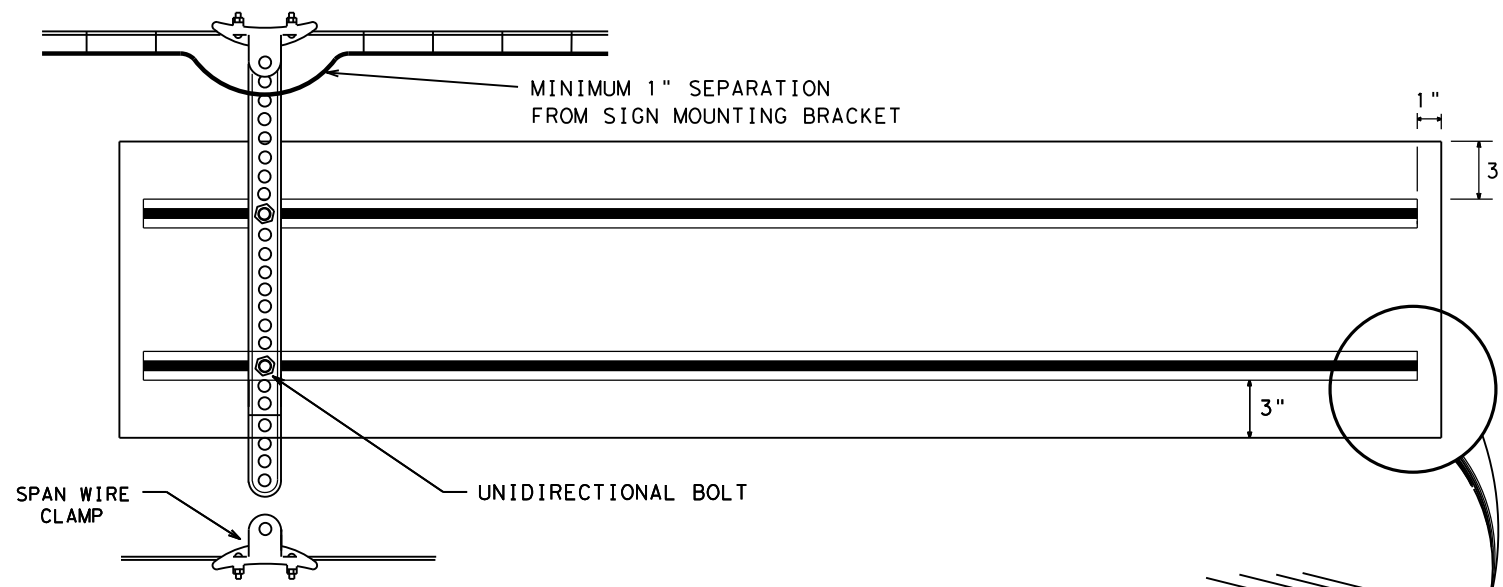


SPAN WIRE FLASHING BEACON
SIGNAL HEAD HANGER ASSEMBLY

**SPAN WIRE FLASHING BEACON
SIGNAL HEAD HANGER ASSEMBLY**

ITEM	DESCRIPTION	QTY
1	SPAN WIRE CLAMP, IRON, W/ U-BOLTS	1
2	WIRE OUTLET BODY, 3/4", ALUM	1
3	SET SCREW, SQUARE HD, CUP POINT, 1/4"-20X5/8", TYPE 304 STAINLESS	1
4	LOCKRING, SERRATED, 380 DIE CAST ALUM	1
5	GASKET, 70 DURO NEOPRENE	1
6	NIPPLE, HEX, 1-1/2" NPS, ALUM	1
7	KIT, SIGNAL CLOSURE	1
8	GROMMET, 1-1/2", W/ DIAPHRAGM	1

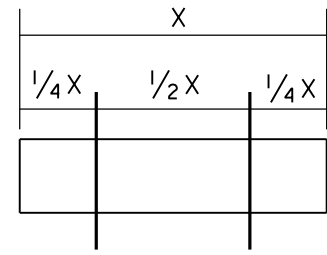
CONSTRUCTION DETAILS FOR SPAN
WIRE MOUNTED TRAFFIC SIGNALS



MEDIUM EXTRUSION HPN053

UNIDIRECTIONAL BOLT

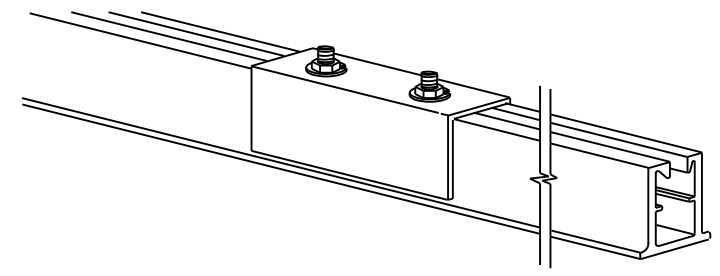
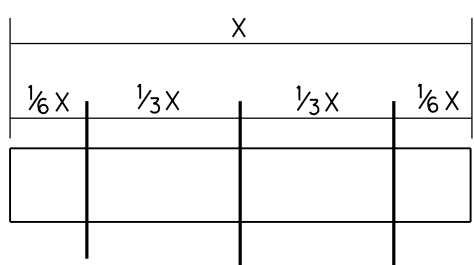
ALUMINUM RIVET



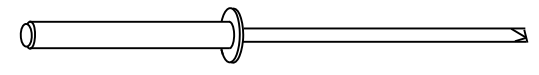
HANGER ASSEMBLY DETAILS

NOTES: 1. BASED ON SIGN WIDTH, THE NUMBER OF VERTICAL SUPPORTS REQUIRED ARE AS FOLLOWS:
 3'-0" OR LESS - 1 SUPPORT REQUIRED
 >3'-0" UP TO 8'-0" - 2 SUPPORTS REQUIRED
 >8'-0" - 3 SUPPORTS REQUIRED
 SEE DIAGRAMS FOR SIGN SUPPORT SPACING

2. FOR STREET NAME SIGNS, EXTRUDED ALUMINUM SHALL BE MOUNTED FOR HORIZONTAL SUPPORT AS SHOWN.



5" ALUMINUM COUPLING
6061-T6



ALUMINUM RIVET

NOTE: ALUMINUM RIVETS SHALL BE USED TO ATTACH THE SIGN TO THE EXTRUDED ALUMINUM. SPACINGS OF RIVETS SHALL BE 6" O.C.

SHEET 3 OF 3
DALLAS DISTRICT STANDARD

FED. RD. DIV. NO.	FEDERAL AID PROJECT NO.	SHEET NO.
6 (SEE TITLE SHEET)		
STATE	DIST. NO.	COUNTY
TEXAS	DAL	#CNTY
CONT.	SECT.	JOB HIGHWAY NO.
#CONT	#SECT	#JOB #HWY

CONSTRUCTION DETAILS FOR SPAN WIRE MOUNTED TRAFFIC SIGNALS