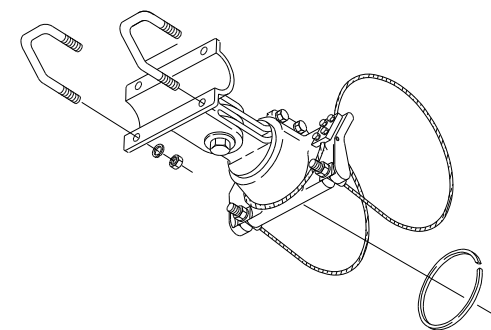
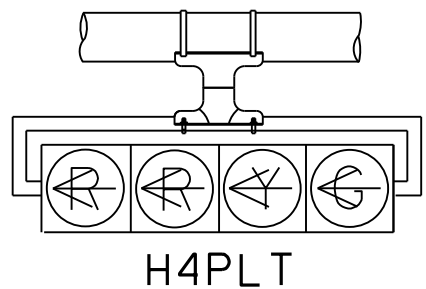
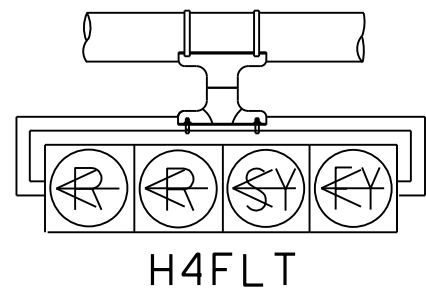
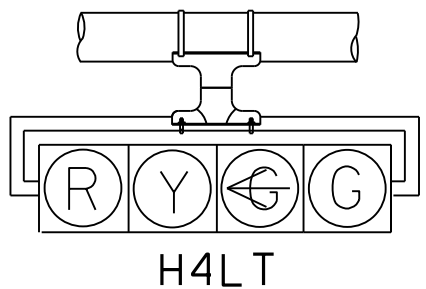
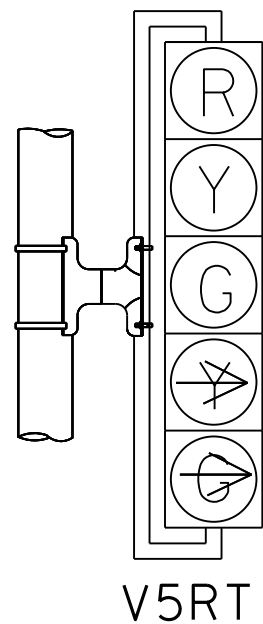
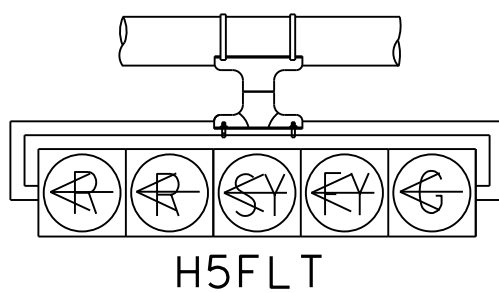
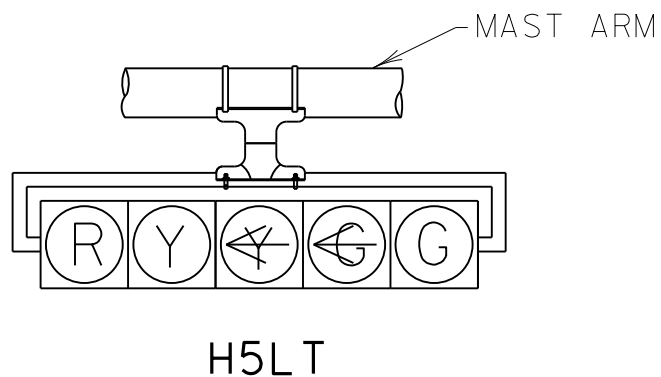


TYPE 1 AND 2 CLAMPS



TYPE 2 CLAMP KIT

SHALL BE INSTALLED WHEN ROTATION ABOUT THE HORIZONTAL AND VERTICAL AXES ARE NEEDED.



NOTES:

1. VEHICLE SIGNAL HEADS SHALL BE MOUNTED WITH TYPE 1 CLAMP AND APPROPRIATE TUBING.
2. ALL POLE MOUNTED VEHICLE HEADS SHALL BE INSTALLED ON THE AWAY-FROM-TRAFFIC SIDE OF THE PEDESTAL OR MAST ARM POLE.
3. THE SIGNAL HEADS SHOWN ARE NOT MEANT TO REFLECT ALL POSSIBLE SIGNAL HEADS, BUT ARE REPRESENTATIVE OF SIGNAL HEADS COMMONLY IN USE. SEE THE TRAFFIC SIGNAL LAYOUT FOR REQUIRED SIGNAL HEADS, AND THE NUMBER AND ORIENTATION OF LOUVERS.

TRAFFIC SIGNAL HEAD DETAILS (DAL)

© TXDOT 2018
DALLAS DISTRICT STANDARD

FED. RD. DIV. NO.	FEDERAL AID PROJECT NO.	SHEET NO.
6	(SEE TITLE SHEET)	101
STATE	STATE DIST.	COUNTY
TEXAS	DALLAS	DENTON, ETC.
CONT.	SECT.	JOB HIGHWAY NO.
0081	03	081 US 371, ETC.