

Quality Guidelines for Temporary Traffic Control Devices and Features



**American Traffic Safety
Services Association**

EVALUATION GUIDE FOR TEMPORARY CONCRETE BARRIER

ACCEPTABLE

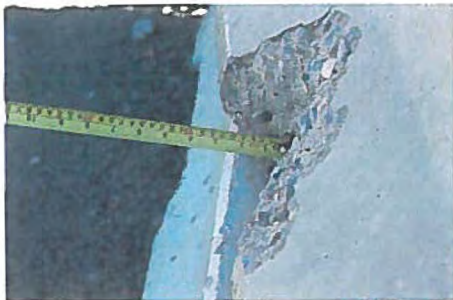
These are examples of acceptable temporary barrier wall. The walls appear new with few minor blemishes. Spalls and chipped concrete pose no threat of damaging or snagging tires. The connecting loops are all sound and in place with no broken strands.



EVALUATION GUIDE FOR TEMPORARY CONCRETE BARRIER cont.

MARGINAL

These are examples of temporary barrier wall which are marginal. The walls have minor spalls with hairline cracks and minor imperfections along the base but are still structurally sound. The connecting loops are all sound and in place.



UNACCEPTABLE

These are examples of unacceptable temporary concrete barrier walls. The barrier walls have large spalls and cracks, with unsound concrete that could be easily removed when hit. The spalled wall could cause tire damage if hit especially along the base. Any spalled concrete could cause the vehicle to "snag" and twist from the direction it is going. Any spalls with exposed rebar or with connecting loops broken or damaged is cause for rejection.

