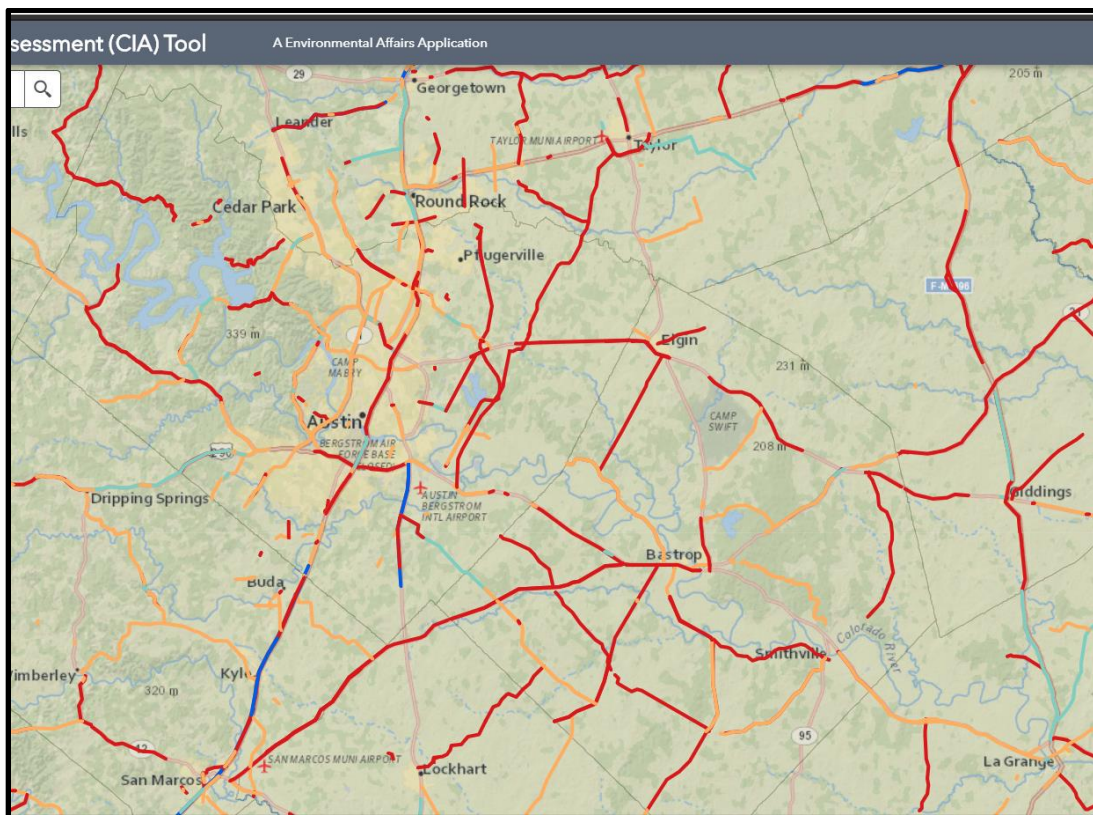


This document provides guidance on how to use the Community Impacts Data Tool, a GIS based tool developed by TxDOT ENV to assist with completion of a Community Impact Assessment (CIA) for TxDOT projects. The tool uses the most current decennial census and American Community Survey data which is then curated to provide only the data needed, at the appropriate census geography level, to complete a TxDOT CIA. This tool can provide a map of the project's unique study area as well as a report showing race data at block level, median income data at block group level, and language data at block group level. These maps and data report can be appended to the TxDOT CIA Technical Report.

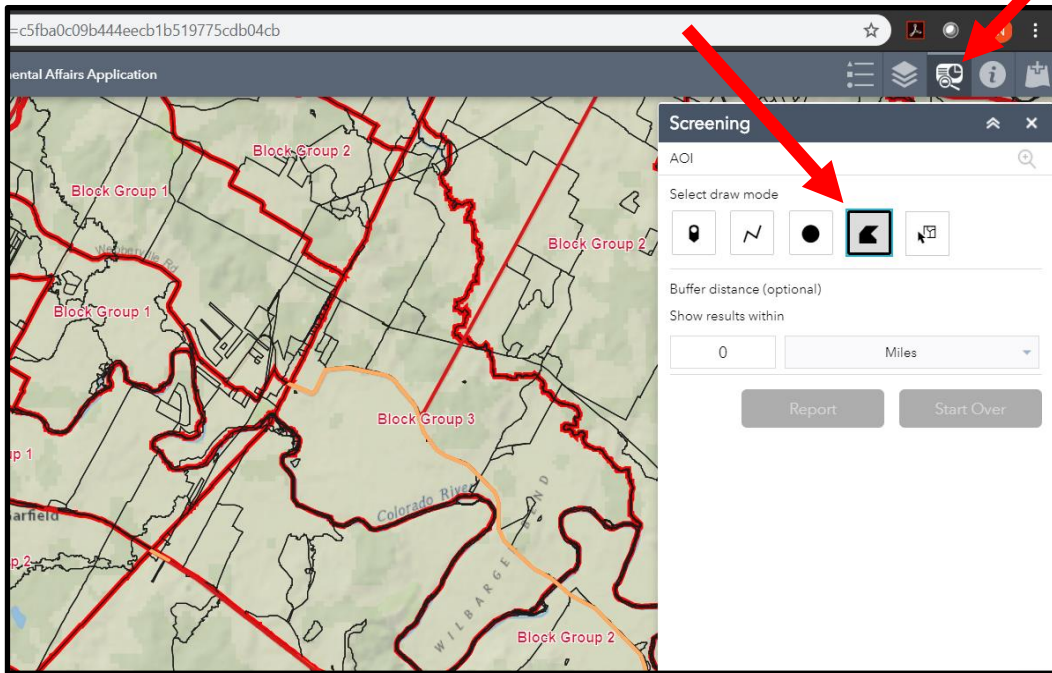
Following is a step by step guide to using the Community Impacts Data Aggregator and generating the necessary reports and data.

1. The Community Impacts Data Aggregator can be accessed on the [TxDOT Sharepoint site](#). You can navigate to it from Crossroads>TxDOT Sharepoint>Environmental Affairs>Business Support>GIS>GIS Environmental Resources
2. In order to start your search, zoom and pan to your project area.



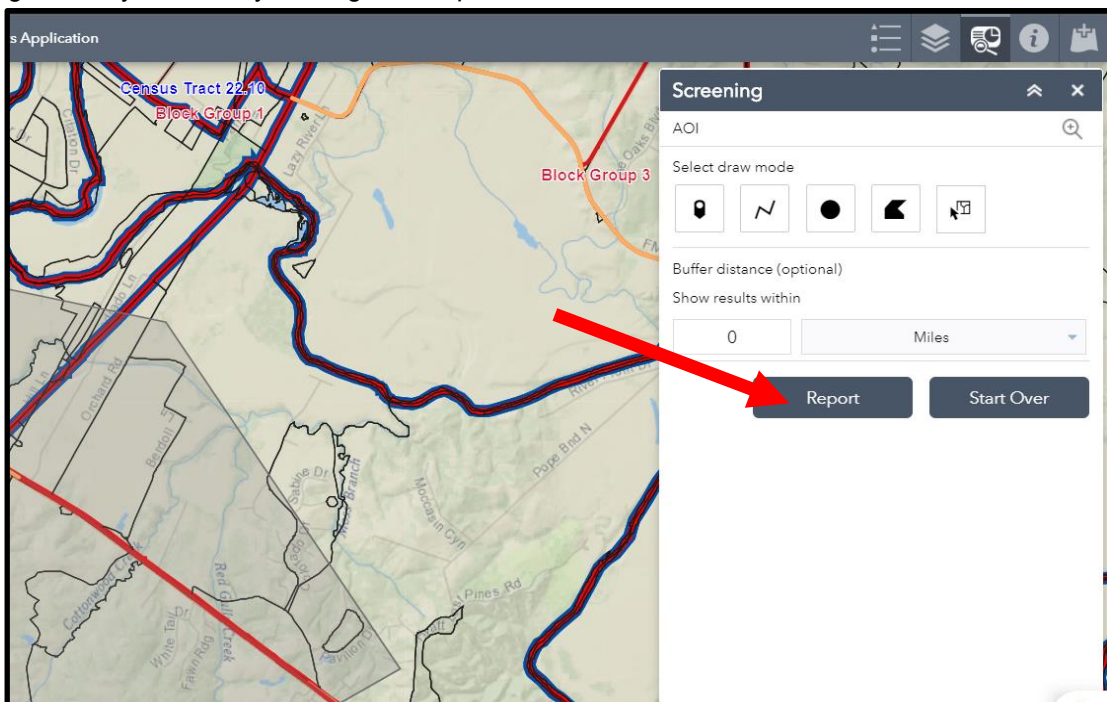
3. Once you zoom to your project area you can customize your study area. Go to the "Screening" drop down button in the top right corner. In the screening tools, select a "draw mode" to create your study area.

There are several options for drawing the appropriate study area depending on what your unique study area might look like. In most cases, the polygon tool will be best but sometimes the line feature with a buffer could be used. **See the Community Impacts Handbook for more information on selecting a study area.**

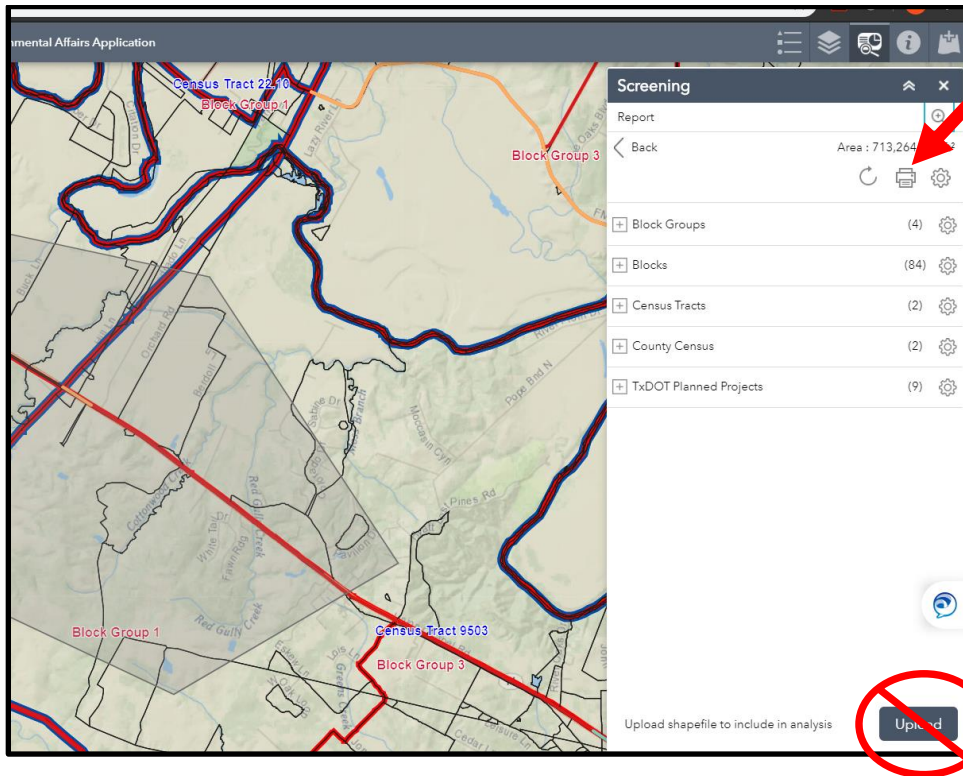


**\*\*Please note that the study area cannot exceed 100 census geography units. If you have a large project, you may need to create more than one study area to cover your entire project\*\***

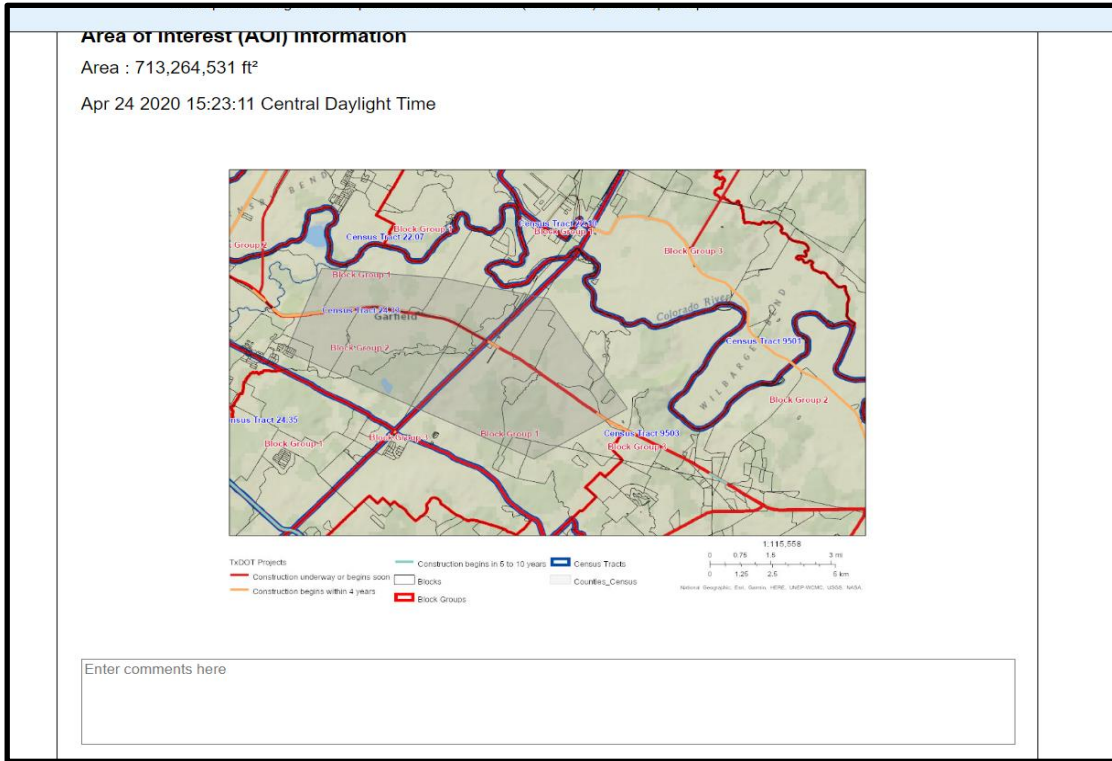
4. After you've selected your study area it will be highlighted in gray. You are then ready to generate your data by clicking the "Report" button.



5. To generate your report, click on the Printer icon. **Do NOT** click the “Upload” button.



6. A screening report will be generated for you including a map of your study area.



The results of this report can be summarized in the CIA TR form and the full report can be included as an appendix to the report. While other factors should be included and considered (such as field observations, data on students on free or reduced lunch, and other ACS data sets) this basic set of data is the first step in completing a comprehensive CIA and the foundation for Environmental Justice analysis.

Please contact ENV if you have any questions about using this tool or the data in it.



**Appendix A: Revision History**

The following table shows the revision history for this interim guidance document.

<b>Revision History</b>	
<b>Effective Date Month, Year</b>	<b>Reason for and Description of Change</b>
May 2020	Version 1 was released.