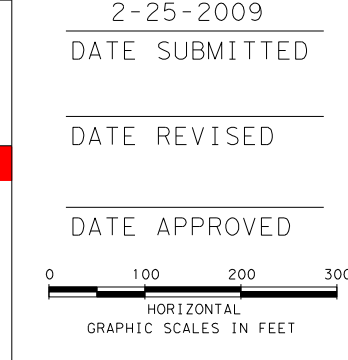


- Legend:**
- PROPOSED MAINLANES
 - PROPOSED MANAGED LANES
 - PROPOSED FRONTAGE ROADS /SURFACE STREET
 - PROPOSED DIRECT CONNECTOR/PROPOSED RAMP
 - PROPOSED SHOULDERS
 - PROPOSED GORE
 - POTENTIAL DISPLACEMENTS
 - PROPOSED CONSTRUCTION BY OTHERS
 - PROPOSED RETAINING WALL
 - PROPOSED CONTROL-OF-ACCESS
 - EXISTING RIGHT-OF-WAY
 - PROPOSED RIGHT-OF-WAY (ACCESS RESTRICTED)
 - PROPOSED RIGHT-OF-WAY (EXISTING DRIVEWAY ACCESS TO REMAIN)
 - PROPOSED NOISE WALL
 - SIDEWALK
 - PROPOSED CONCRETE BARRIER
 - PROPOSED FLEXIBLE BARRIER
 - EXISTING PAVEMENT REMOVAL
 - TRAFFIC DIRECTION
 - HOV DECLARATION AREA
 - ALIGNMENT NAME
 - TRAFFIC SYMBOL
 - CRASH CUSHION
 - MANAGED LANE TOLL GANTRY
 - RAMP TOLL GANTRY
 - BRIDGE IDENTIFIER
 - STRUCTURE LIMITS AND BENTS / COLUMNS
 - LUMINAIRES

NOTE: SHOULDER WIDTHS FOR THE FOLLOWING CONNECTORS WERE "FLIPPED" PLACING THE 9' SHOULDER ON THE INSIDE OF THE CURVE TO MEET STOPPING SIGHT DISTANCE (SSD) REQUIREMENTS IN BOOK 2.

DIRECT CONNECTOR	DESCRIPTION	MINIMUM SSD
35NB20W	DC ramp connecting IH35W-NB to IH820-WB	305'
35SB20E	DC ramp connecting IH35W-SB to IH820-EB	367'
820WBSS	DC ramp connecting IH820-WB to IH35W-WB	305'
820EBSN	DC ramp connecting IH820-EB to IH35W-NB	305'
MLS-E	Managed Lane DC ramp connecting IH35W-SB to IH820-EB	305'
MLW-S	Managed Lane DC ramp connecting IH820-WB to IH35W-SB	367'
183WB20S	DC ramp connecting SH183-WB to IH820-SB	367'

EXIT 17
377
Haltom Rd
Denton Hwy
1 MILE



NOT INTENDED FOR CONSTRUCTION OR PERMIT PURPOSES
2-25-2009
DATE SUBMITTED
DATE REVISED
DATE APPROVED
HORIZONTAL GRAPHIC SCALES IN FEET

BASE SCOPE SCHEMATIC
INCLUDES MANDATORY, OPTION 2
IH 820 MAINLANES BEGIN PROJECT STA 603+67.45 TO STA 700+00 RAMP AND MAJOR CROSS STREETS
ROLL 2 OF 27
TEXAS DEPARTMENT OF TRANSPORTATION
FORT WORTH DISTRICT
MARIBEL CHAVEZ, P.E. DISTRICT ENGINEER
PRELIMINARY DESIGN SCHEMATIC
IH 820
CSJ No. 008-14-058 CSJ No. 008-14-059 CSJ No. 014-16-194
ALONG IH 820 FROM INTERSTATE HIGHWAY 35W TO STATE HIGHWAY 26
PREPARED BY EARTH TECH, INC. UNDER THE SUPERVISION OF ANTHONY L. KARLINSKI, P.E., 92533
AECOM Technical Services Inc. - 3580

NOTES:
TOLL GANTRY LOCATIONS ARE PRELIMINARY AND SUBJECT TO CHANGE.

DESIGN SPEED:
MAINLANES-60MPH-BASED ON URBAN FREEWAY
DIRECT CONNECTORS-50MPH-BASED ON MID RANGE URBAN FREEWAY
RAMP-50MPH-BASED ON MID RANGE URBAN FREEWAY
FRONTAGE ROADS-40MPH-BASED ON URBAN COLLECTOR
CROSS STREETS-40MPH-BASED ON URBAN ARTERIAL OR URBAN COLLECTOR
HALTOM ROAD JUGHANDLES-30MPH-BASED ON LOCAL SIDE STREETS-30MPH-BASED ON LOCAL