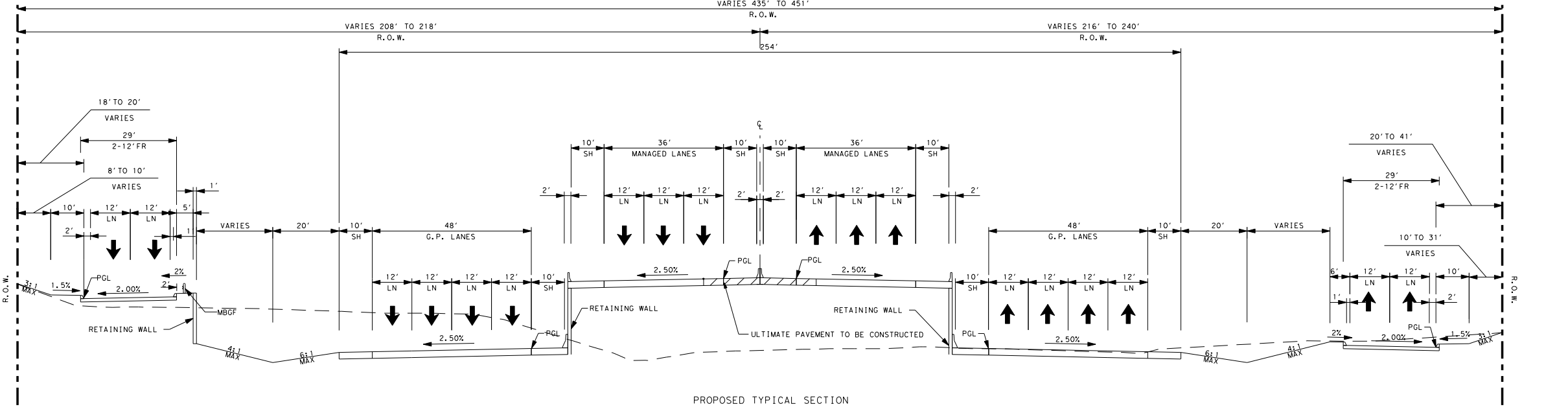
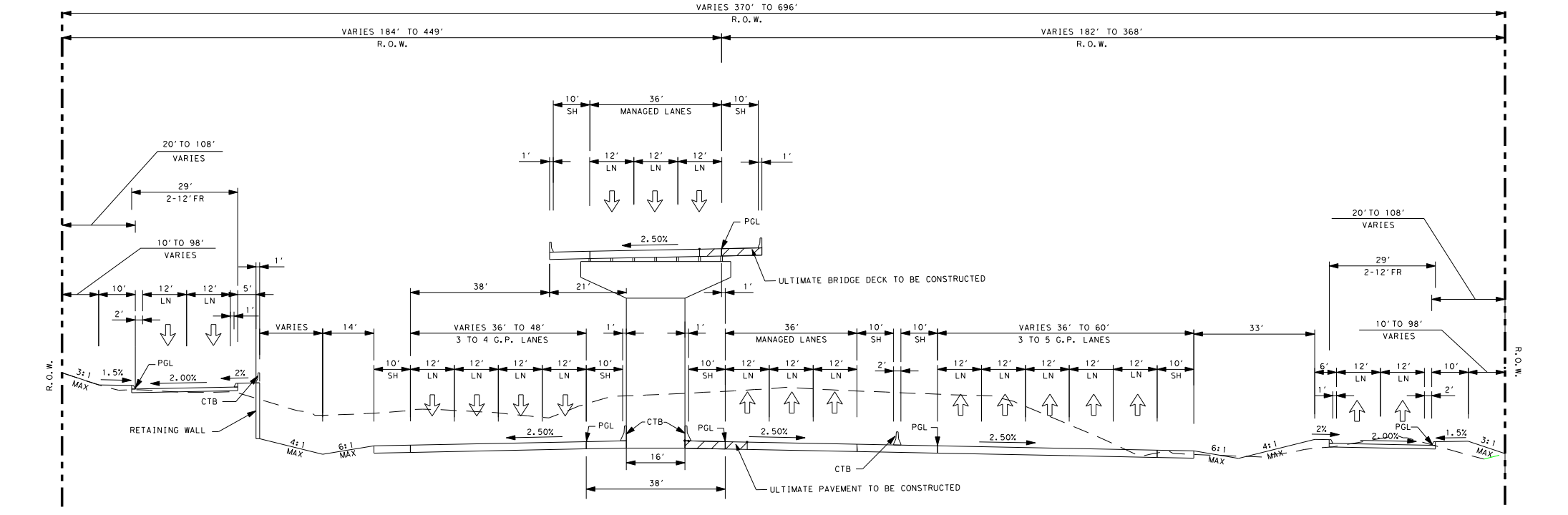


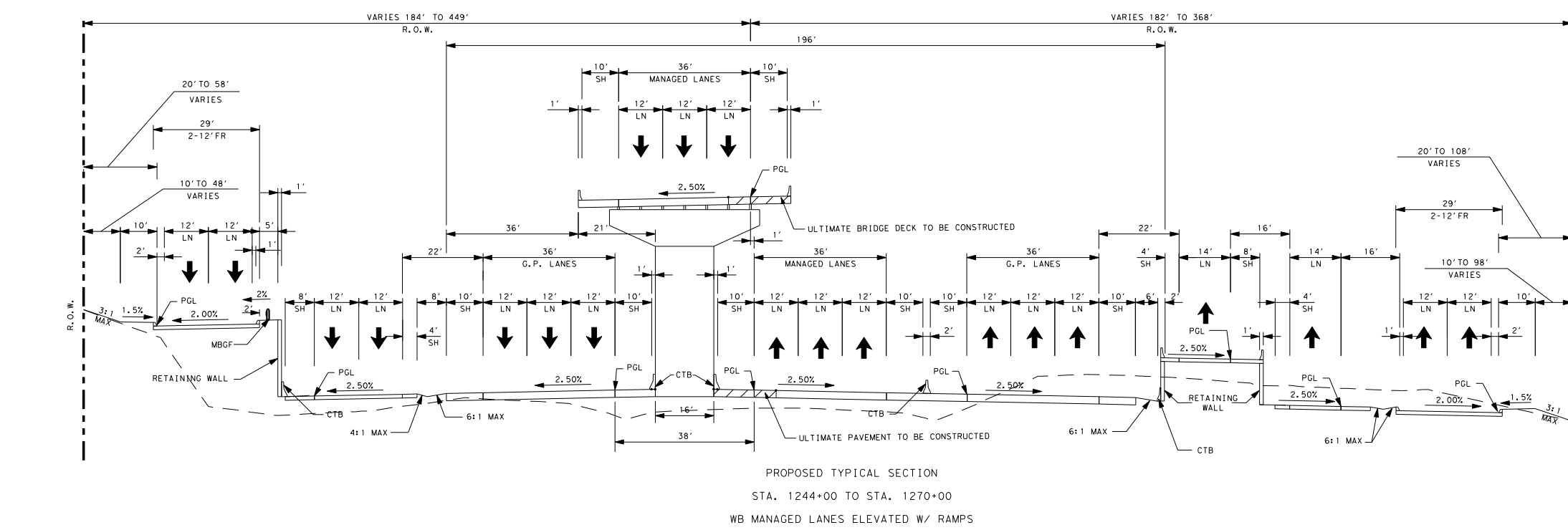
EXISTING TYPICAL SECTION
STA. 1190+00 TO STA. 1310+00



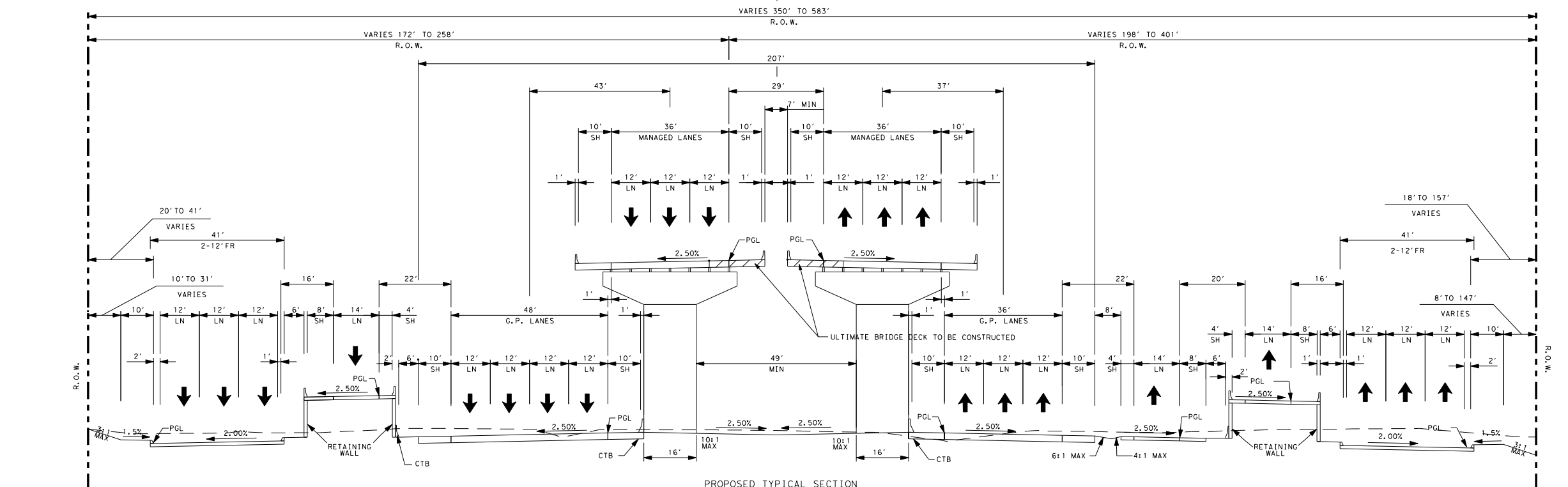
PROPOSED TYPICAL SECTION
STA. 1080+00 TO STA. 1086+70
MANAGED LANES ON WALL



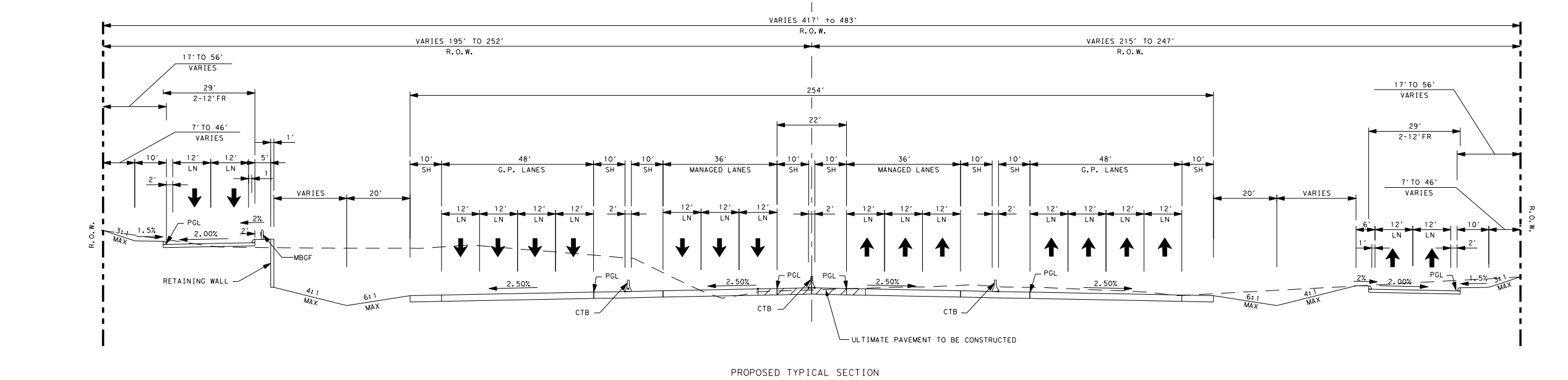
PROPOSED TYPICAL SECTION
STA. 1124+00 TO STA. 1244+00
STA. 1270+00 TO STA. 1310+00



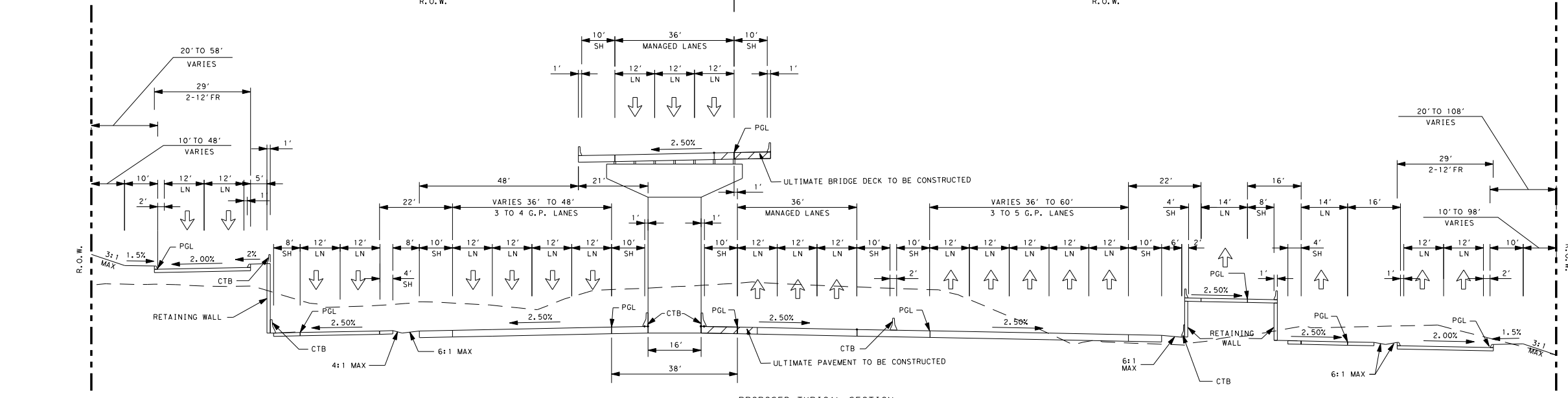
PROPOSED TYPICAL SECTION
STA. 1244+00 TO STA. 1270+00
WB MANAGED LANES ELEVATED W/ RAMPS



PROPOSED TYPICAL SECTION
STA. 1022+00 TO STA. 1079+00
ELEVATED MANAGED LANES



PROPOSED TYPICAL SECTION
W/ RETAINING WALL & SIDE DITCHES
STA. 1086+70 TO 1124+00



PROPOSED TYPICAL SECTION
STA. 1124+00 TO 1244+00
STA. 1270+00 TO STA. 1310+00
WB MANAGED LANES ELEVATED W/ RAMPS



PROPOSED TYPICAL SECTION
STA. 1124+00 TO 1244+00
STA. 1270+00 TO STA. 1310+00
WB MANAGED LANES ELEVATED W/ RAMPS

NOT INTENDED FOR CONSTRUCTION OR PERMIT PURPOSES

2-25-2009
DATE SUBMITTED

DATE REVISED

DATE APPROVED

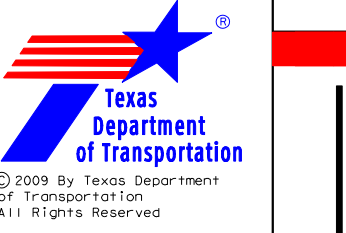
0 100 200 300
HORIZONTAL
GRAPHIC SCALES IN FEET

NTE
MOBILITY PARTNERS
PRELIMINARY

AECOM

ULTIMATE SCOPE SH183/121 TYPICAL SECTIONS ROLL 25 OF 27

TEXAS DEPARTMENT OF TRANSPORTATION
FORT WORTH DISTRICT
MARIBEL CHAVEZ, P.E. DISTRICT ENGINEER
PRELIMINARY DESIGN SCHEMATIC
SH183 / SH121
CSJ No. 364-01-054 CSJ No. 364-05-025
ALONG SH183 FROM INTERSTATE HIGHWAY 820 TO STATE HIGHWAY 121
PREPARED BY EARTH TECH, INC. UNDER THE SUPERVISION OF ANTHONY L. KARLINSKI, P.E., 92533
AECOM Technical Services Inc. - 3580



I:\Work\Projects\1032866\Map\Access\11\Map\Drawings\Segment_C\Drawings\SE10114.rvt (Plot - 15sec) 1/26/09 11:58 AM