

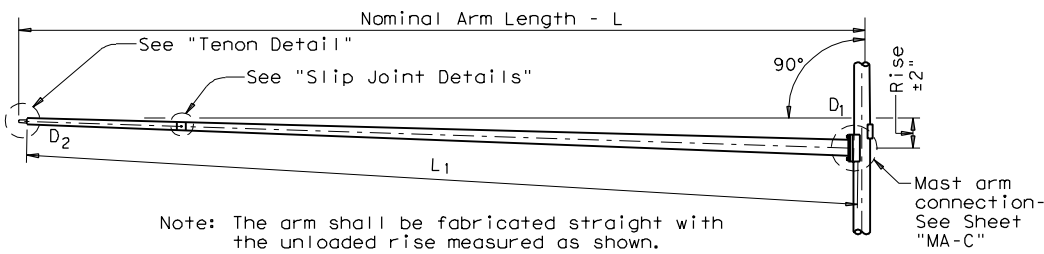
DISCLAIMER: The use of this standard is governed by the "Texas Engineering Practice Act". The use of any kind of unit or unit conversion by TxDOT for any purpose whatsoever. TxDOT assumes no responsibility for the conversion of this standard to other formats or for incorrect results or damages resulting from its use.

ACC: 048np1qt/usr/0482517
 LEVELS DISPLAYED: 1 2 3 4 5 6 7 8 9 10 11 12 13 14 15 16 17 18 19 20 21 22 23 24 25 26 27 28 29 30 31 32 33 34 35 36 37 38 39 40 41 42 43 44 45 46 47 48 49 50 51 52 53 54 55 56 57 58 59 60 61 62 63 64 65 66 67 68 69 70 71 72 73 74 75 76 77 78 79 80 81 82 83 84 85 86 87 88 89 90 91 92 93 94 95 96 97 98 99 100
 LV=1,2 for English 1,3 for Metric

Arm Length	ROUND POLES					POLYGONAL POLES					Foundation Type
	D _B	D ₁₉	D ₂₄	D ₃₀	① thk	D _B	D ₁₉	D ₂₄	D ₃₀	① thk	
ft.	in.	in.	in.	in.	in.	in.	in.	in.	in.	in.	
20	10.5	7.8	7.1	6.3	.179	11.5	8.5	7.7	6.8	.179	30-A
24	11.0	8.3	7.6	6.8	.179	12.0	9.0	8.2	7.3	.179	30-A
28	11.5	8.8	8.1	7.3	.179	12.5	9.5	8.7	7.8	.179	30-A
32	12.5	9.8	9.1	8.3	.179	12.0	9.0	8.2	7.3	.239	30-A
36	11.5	8.8	8.1	7.3	.239	12.5	9.5	8.7	7.8	.239	30-A
40	12.0	9.3	8.6	7.8	.239	13.5	10.5	9.7	8.8	.239	36-A
44	12.5	9.8	9.1	8.3	.239	14.0	11.0	10.2	9.3	.239	36-A
48	13.0	10.3	9.6	8.8	.239	15.0	12.0	11.2	10.3	.239	36-A

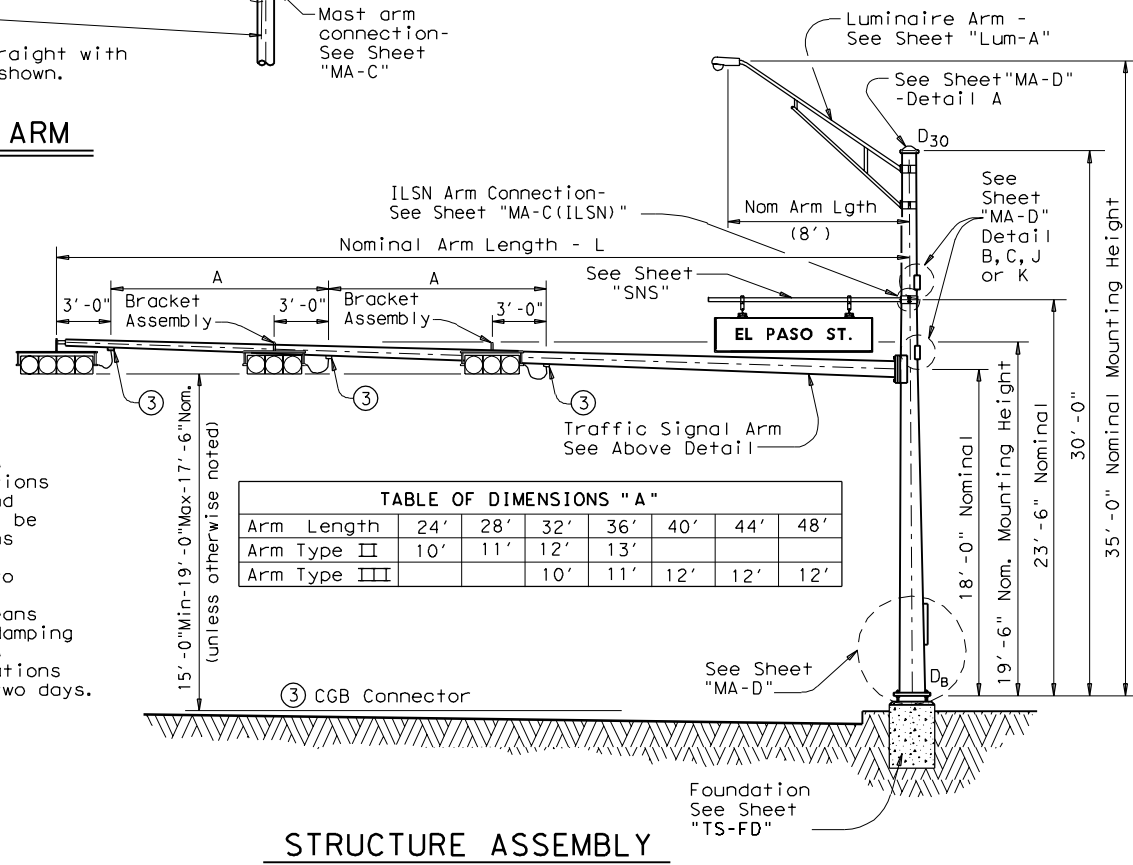
Arm Length	ROUND ARMS					POLYGONAL ARMS				
	L ₁	D ₁	D ₂	① thk	Rise	L ₁	D ₁	② D ₂	① thk	Rise
ft.	ft.	in.	in.	in.		ft.	in.	in.	in.	
20	19.1	6.5	3.8	.179	1'-9"	19.1	7.0	3.5	.179	1'-8"
24	23.1	7.5	4.3	.179	1'-10"	23.1	7.5	3.5	.179	1'-9"
28	27.1	8.0	4.2	.179	1'-11"	27.1	8.0	3.5	.179	1'-10"
32	31.0	9.0	4.7	.179	2'-1"	31.0	9.0	3.5	.179	2'-0"
36	35.0	9.5	4.6	.179	2'-4"	35.0	10.0	3.5	.179	2'-1"
40	39.0	9.5	4.1	.239	2'-8"	39.0	9.5	3.5	.239	2'-3"
44	43.0	10.0	4.1	.239	2'-11"	43.0	10.0	3.5	.239	2'-6"
48	47.0	10.5	4.1	.239	3'-4"	47.0	11.0	3.5	.239	2'-9"

- D_B = Pole Base O.D.
 - D₁₉ = Pole Top O.D. with no Luminaire and no ILSN
 - D₂₄ = Pole Top O.D. with ILSN w/out Luminaire
 - D₃₀ = Pole Top O.D. with Luminaire
 - D₁ = Arm Base O.D.
 - D₂ = Arm End O.D.
 - L₁ = Shaft Length
 - L = Nominal Arm Length
- ① Thickness shown are minimums, thicker materials may be used.
- ② D₂ may be increased by up to 1" for polygonal arms.



TRAFFIC SIGNAL ARM
(Fixed Mount)

Note: The arm shall be fabricated straight with the unloaded rise measured as shown.



Arm Length	24'	28'	32'	36'	40'	44'	48'
Arm Type II	10'	11'	12'	13'			
Arm Type III			10'	11'	12'	12'	12'

VIBRATION WARNING

Mast Arms of approximately 40' or longer are subject to possible harmonic vertical vibrations in light wind conditions due to unusual combinations of signal numbers, weights or positions, arm-wind orientation, and arm-pole stiffness. Arms shall be visually inspected in 5 to 20 mph wind conditions after signal head installation and, if vertical movements with a total excursion (max positive to max negative) of more than approximately 8" are observed at arm tip, damping devices or other means shall be fitted to the arm(s). The necessary damping device(s) or other remedial measures shall be as recommended by the fabricator. Excessive vibrations shall not be allowed to continue for more than two days.

SHIPPING PARTS LIST						
Ship each pole with the following attached: enlarged hand hole, pole cap, fixed-arm connection bolts and washers and any additional hardware listed in the table.						
Nominal Arm Length	30' Poles With Luminaire		24' Poles With ILSN		19' Poles With No Luminaire and No ILSN	
	Above hardware plus: One (or two if ILSN attached) small hand hole, clamp-on simplex		Above hardware plus one small hand hole		See note above	
ft	Designation	Quantity	Designation	Quantity	Designation	Quantity
20	20L-80		20S-80		20-80	
24	24L-80		24S-80		24-80	
28	28L-80		28S-80		28-80	
32	32L-80		32S-80		32-80	
36	36L-80		36S-80		36-80	
40	40L-80		40S-80		40-80	
44	44L-80		44S-80		44-80	
48	48L-80		48S-80		48-80	

Traffic Signal Arms (1 per Pole)						Ship each arm with the listed equipment attached							
Nominal Arm Length	Type I Arm (1 Signal)		Type II Arm (2 Signals)		Type III Arm (3 Signals)		ft	Designation	Quantity	Designation	Quantity	Designation	Quantity
	1 CGB connector		1 Bracket Assembly and 2 CGB Connectors		2 Bracket Assemblies and 3 CGB Connectors			Designation	Quantity	Designation	Quantity	Designation	Quantity
20	20I-80												
24	24I-80			24II-80									
28	28I-80			28II-80									
32				32II-80						32III-80			
36				36II-80						36III-80			
40										40III-80			
44										44III-80			
48										48III-80			

Luminaire Arms (1 per 30' pole)		
Nominal Arm Length	Quantity	
8' Arm		

④ Supply Option "A" unless otherwise noted

ILSN Arm (Max. 2 per pole) Ship with clamps, bolts and washers		
Nominal Arm Length	Quantity	
7' Arm		
9' Arm		

Anchor Bolt Assemblies (1 per pole)		
Anchor Bolt Diameter	Anchor Bolt Length	Quantity
1 1/2"	3'-4"	
1 3/4"	3'-10"	

Each anchor bolt assembly consists of the following: Top and Bottom templates, 4 anchor bolts, 8 nuts, 8 flat washers, 4 lock washers and 4 nut anchor devices (Type 2) per Standard Drawing "TS-FD".

Templates may be removed for shipment.

Texas Department of Transportation
 Traffic Operations Division
TRAFFIC SIGNAL SUPPORT STRUCTURES
SINGLE MAST ARM ASSEMBLY
(80 MPH WIND ZONE)
SMA-80(1)-96

FILE# SMA-80.DGN	DN# MS	CK# JSY	DN# MMF	CK# JSY
© TxDOT August 1995	DIST	FED REC	FEDERAL AID PROJECT	SHEET
5-96	REVISIONS	6		
	COUNTY	CONTROL SECT	JOB	HIGHWAY