

STATE	FEDERAL AID PROJECT NO.	DATE
TEXAS	SU 106(3)	1
PROJECT	CONTROL NO.	DATE
12 BRAZORIA 111-8-39	SH 288	

STATE OF TEXAS  
STATE HIGHWAY DEPARTMENT

968 15

PLAN OF PROPOSED  
RIGHT OF WAY PROJECT  
BRAZORIA COUNTY  
STATE HIGHWAY 288  
CONTROL 111-8-39

FINAL MAP

FROM INTERSECTION OF SH36, S&E TO FM 1495  
NET LENGTH: 14,848.20 FT. = 2.812 MILES



STA. 0+00 BEG. PROJ. 111-8-39 =  
3205' S72°01'E PROJ. C 111-8-23 Sta 0+00 =  
= STA. 1903+64.05 PROJ. C 188-6-14

STA. 140+48.20 END CONT. 111-8-39  
= STA. 43+61.1 CONT. 587-1-7

NOTE:  
Construction Project Data:  
Project No.: SU 106(3)  
Control No.: 111-8-39  
Beg. Sta. : 0+00  
End Sta. : 140+48.20  
Exceptions : None  
Equations : None  
Net Length: 14,413.20 Ft. = 2.729 Mi.

N-6T SH 288 27-N

CONVENTIONAL SIGNS

RIGHT OF WAY LINE	
PROPERTY LINE	
COUNTY LINE	
CONTROL OF ACCESS LINE	
SURVEY LINE	
FENCE	
POWER LINE	
TELEPHONE OR TELEGRAPH	
RAILROAD	
BRIDGE OR CULVERT	
CITY LIMITS	

EQUATIONS ~ None  
EXCEPTIONS ~ None  
RAILROAD CROSSINGS ~ None

LAYOUT SCALE: 1 IN.



CORRECTED 4-13-65

*F. S. Mikovsky*  
Resident

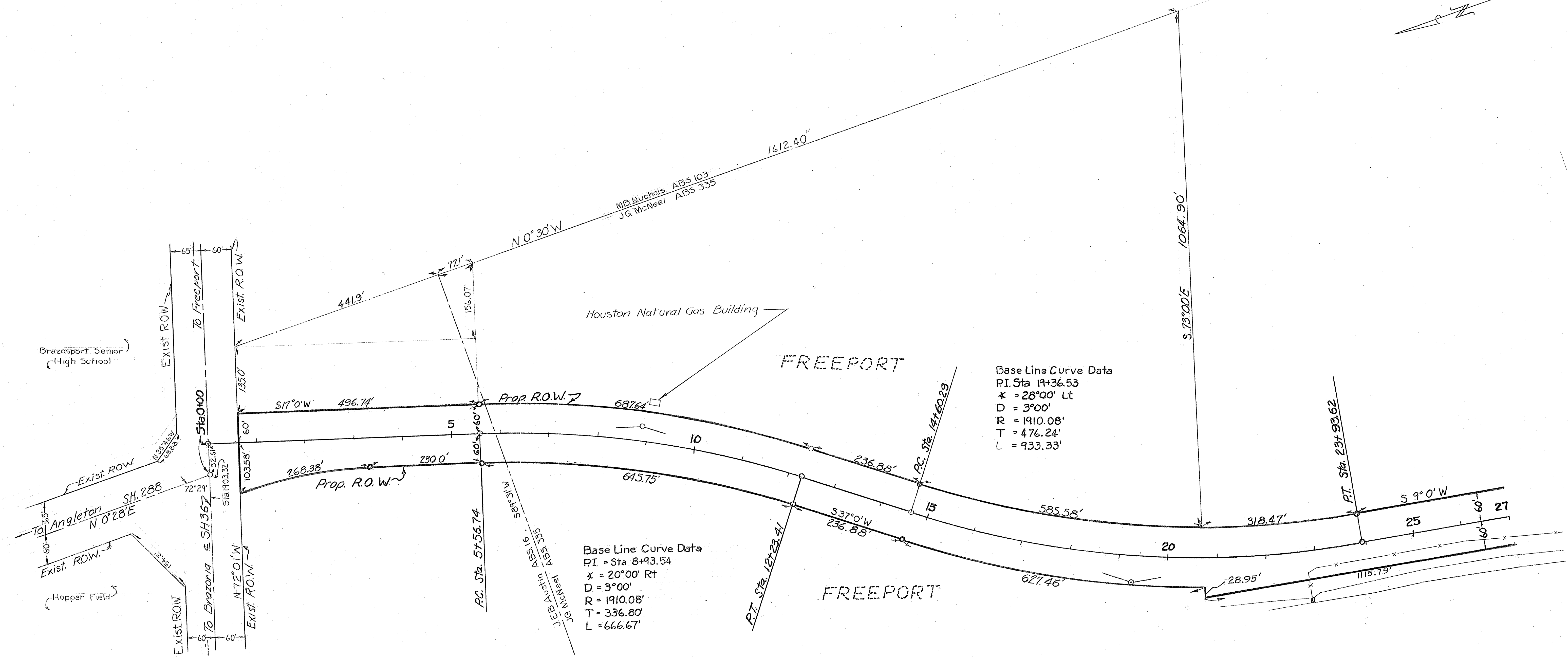
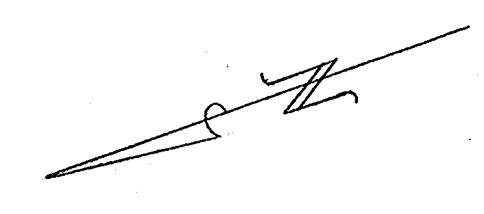
APPROVED 4-15-65

*M. S. Convisser*  
DISTRICT ENGINEER

DEPARTMENT OF HIGHWAYS  
BUREAU OF PUBLIC ROADS

APPROVED \_\_\_\_\_ DATE \_\_\_\_\_

DIVISION ENGINEER \_\_\_\_\_ DATE \_\_\_\_\_

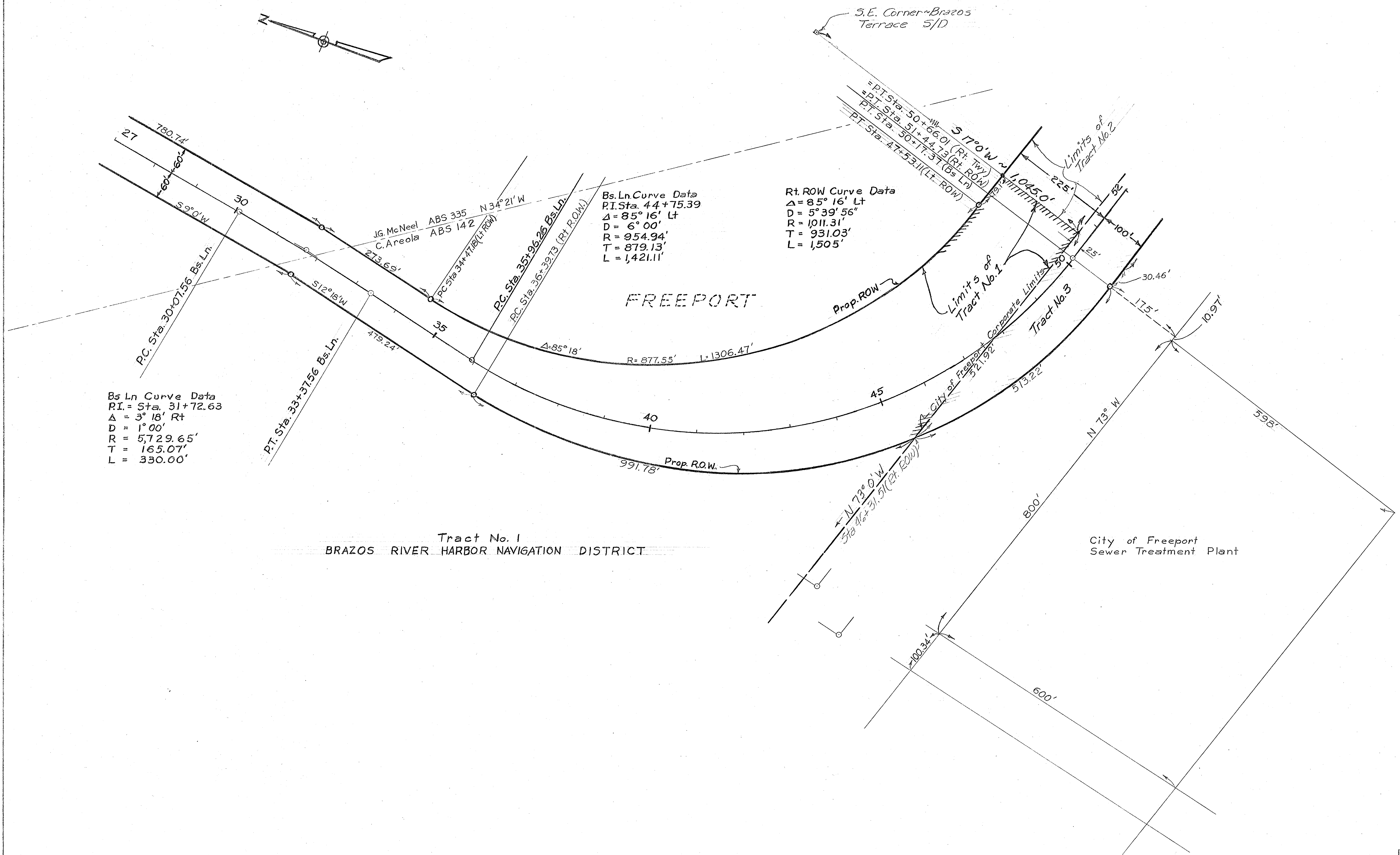
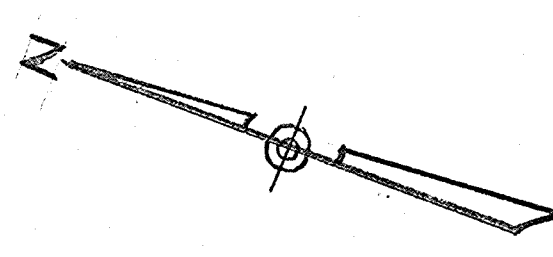


Base Line Curve Data  
 P.I. Sta 14+36.53  
 X = 28°00' Lt  
 D = 3°00'  
 R = 1910.08'  
 T = 476.24'  
 L = 933.33'

Base Line Curve Data  
 P.I. = Sta 8+93.54  
 X = 20°00' Rt  
 D = 3°00'  
 R = 1910.08'  
 T = 336.80'  
 L = 666.67'

**TRACT NO. 1**  
 BRAZOS RIVER HARBOR NAVIGATION DISTRICT  
 DEED ~ City of Freeport  
 Volume 874 Page 174  
 Sta. 0+60 to Sta. 48+32.21(Lt ROW)  
 17.038 Acres

FED. RD. DIV. NO.	STATE	FEDERAL PROJECT NO.	SHEET NO.
6	TEXAS	SU 106(3)	2
STATE DIST. NO.	COUNTY	CONT. SECT. JOB	HIGHWAY NO.
12	BRAZORIA	III 8 39	SH 288



Bs Ln Curve Data  
 P.I. = Sta. 31+72.63  
 $\Delta = 3^\circ 18' Rt$   
 $D = 1^\circ 00'$   
 $R = 5,729.65'$   
 $T = 165.07'$   
 $L = 330.00'$

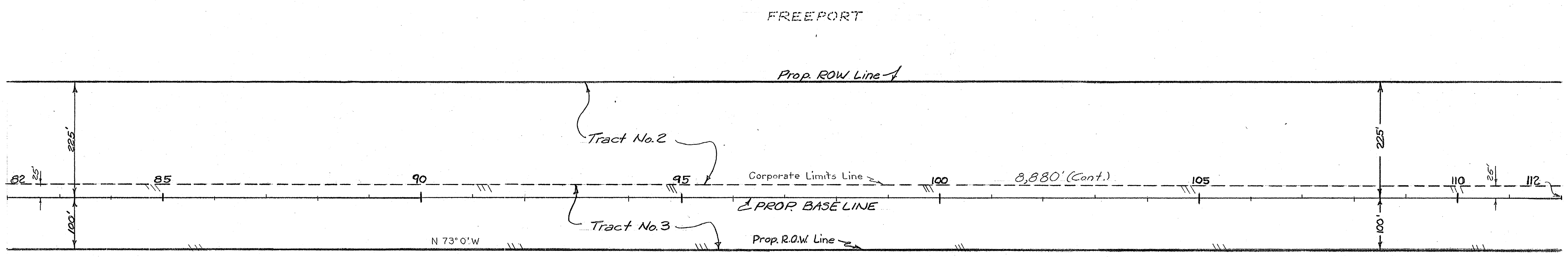
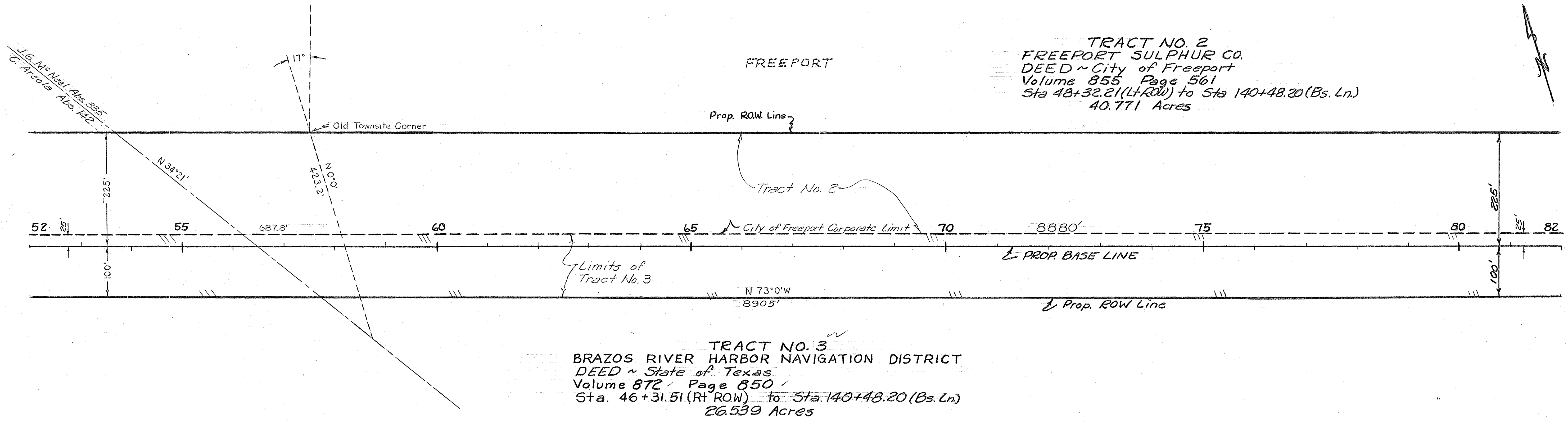
Bs Ln Curve Data  
 P.I. Sta. 44+75.39  
 $\Delta = 85^\circ 16' Lt$   
 $D = 6^\circ 00'$   
 $R = 954.94'$   
 $T = 879.13'$   
 $L = 1,421.11'$

Rt. ROW Curve Data  
 $\Delta = 85^\circ 16' Lt$   
 $D = 5^\circ 39' 56''$   
 $R = 1,011.31'$   
 $T = 931.03'$   
 $L = 1,505'$

Tract No. 1  
 BRAZOS RIVER HARBOR NAVIGATION DISTRICT

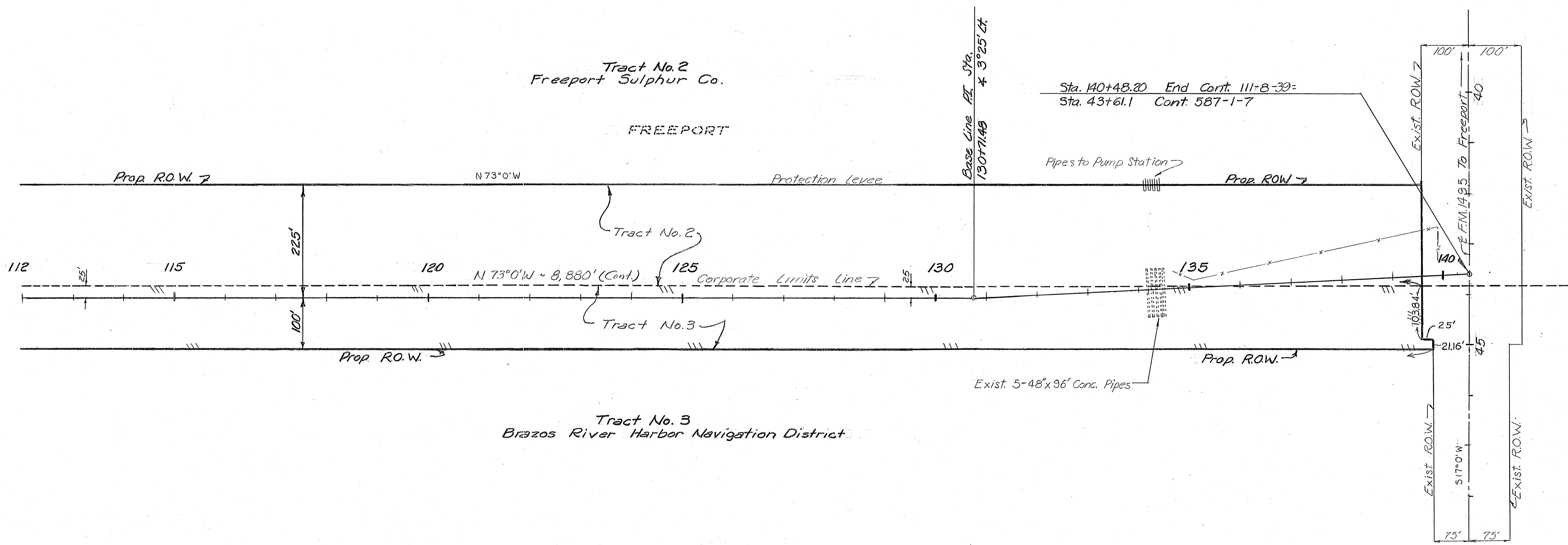
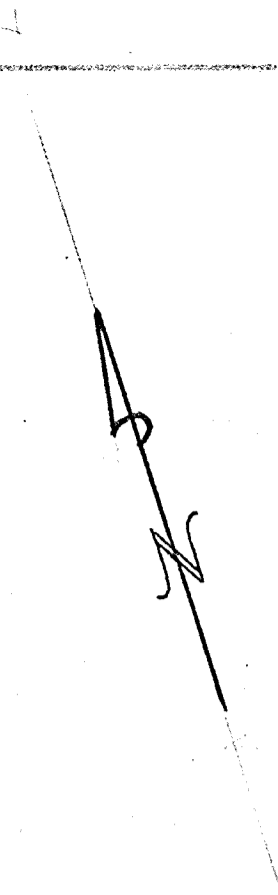
City of Freeport  
 Sewer Treatment Plant

FED. NO.	STATE	FEDERAL PROJECT NO.	SHEET NO.
6	TEXAS	SU 106(3)	3
STATE DIST. NO.	COUNTY	CONTR. SECT. JOB	HIGHWAY NO.
12	BRAZORIA	III 8 39	SH288



FED. RD. DIV. NO.	STATE	FEDERAL PROJECT NO.	SHEET NO.
6	TEXAS	SU 106(3)	4
STATE DIST. NO.	COUNTY	CONT. SECT. JOB	HIGHWAY NO.
12	BRAZORIA	III 8 30	SH288





Tract No. 2  
Freeport Sulphur Co.

FREEPORT

N 73° 0' W

Protection levee

Pipes to Pump Station

Prop. R.O.W.

Tract No. 2

Tract No. 3

Tract No. 3  
Brazos River Harbor Navigation District

N 73° 0' W ~ 8,880' (Cont.)

Corporate Limits Line 7

Exist. 5-48"x96' Conc. Pipes

Sta. 140+48.20 End Cont. 111+8-39 =  
Sta. 43+61.1 Cont. 587-1-7

Exist. ROW 7

Exist. ROW 7

Exist. ROW

Exist. ROW

FED. PROJ. NO.	STATE	FEDERAL PROJECT NO.	SHEET NO.
0	TEXAS	SU 106(3)	5
STATE DIST. NO.	COUNTY	CONT. SECT. JOB	HIGHWAY NO.
12	BRAZORIA	III B 39	SH 288