

PRELIMINARY SUBJECT TO CHANGE

SHEET 3

TEXAS 288 TOLL

SCHEMATIC LAYOUT
 WILSONIA CORSEY
 PROPOSED SH 288 TOLLWAY
 FROM US 99 TO CR 48
 BOUSTON DISTRICT
 DATE: APR 2017

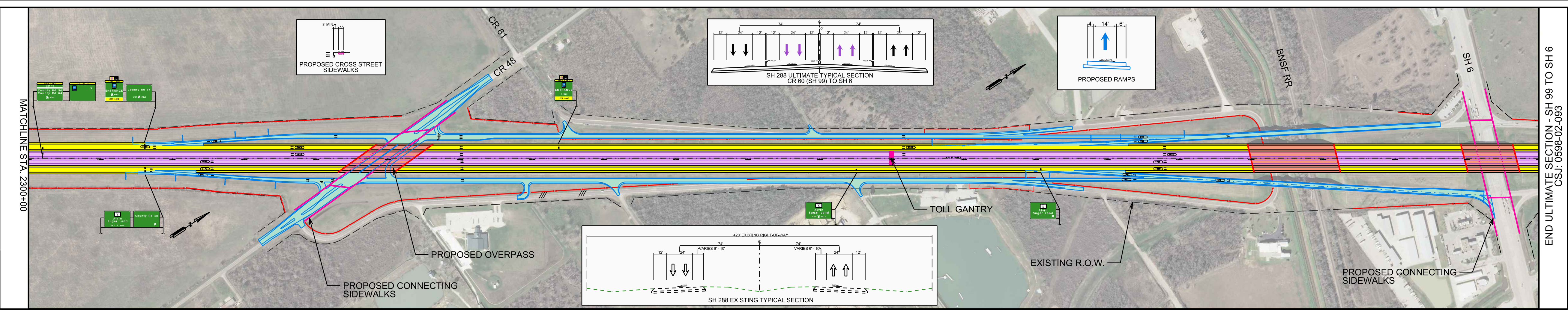
NOT A BIDDING DOCUMENT

LEGEND

DESIGN CRITERIA

COLOR/FILL LEGEND

CURVE DATA



END ULTIMATE SECTION - SH 99 TO SH 6 CSJ: 0598-02-093

