

PRELIMINARY SUBJECT TO CHANGE

SCHEMATIC LAYOUT  
BRAZORIA COUNTY  
PROPOSED SH 288  
SH 288 TOLLWAY

FROM US 95  
TO CR 66

BOUSTON DISTRICT

NOT A BIDDING DOCUMENT

DATE

LEGEND

DESIGN CRITERIA

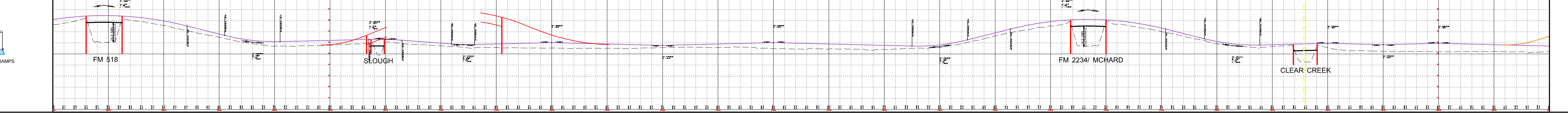
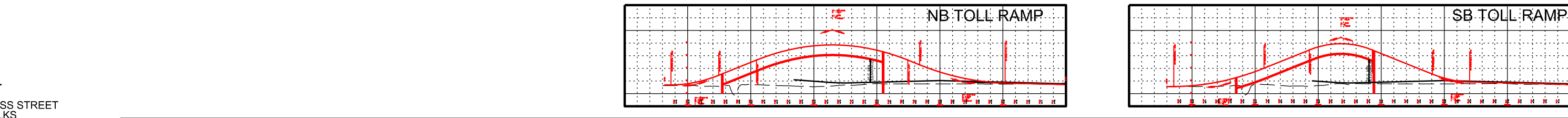
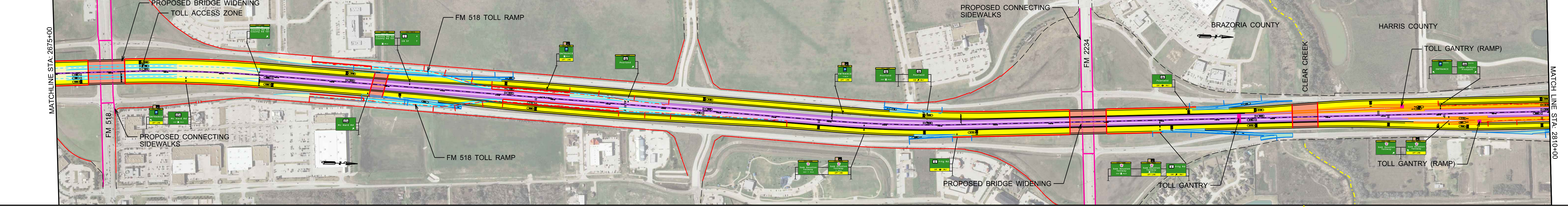
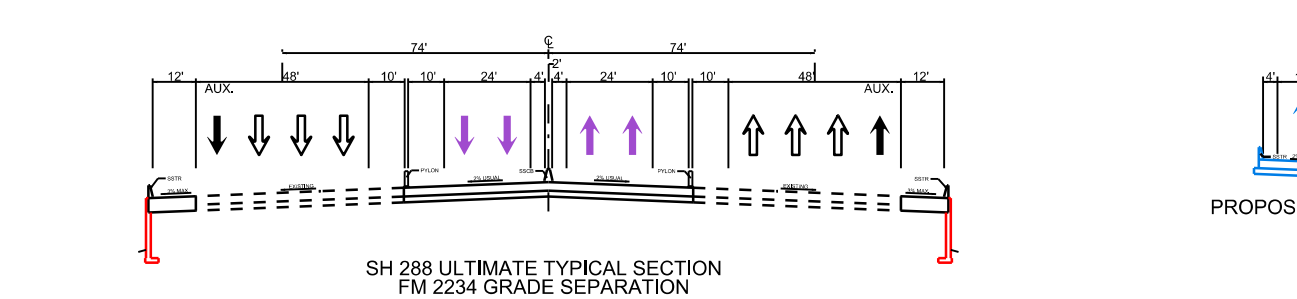
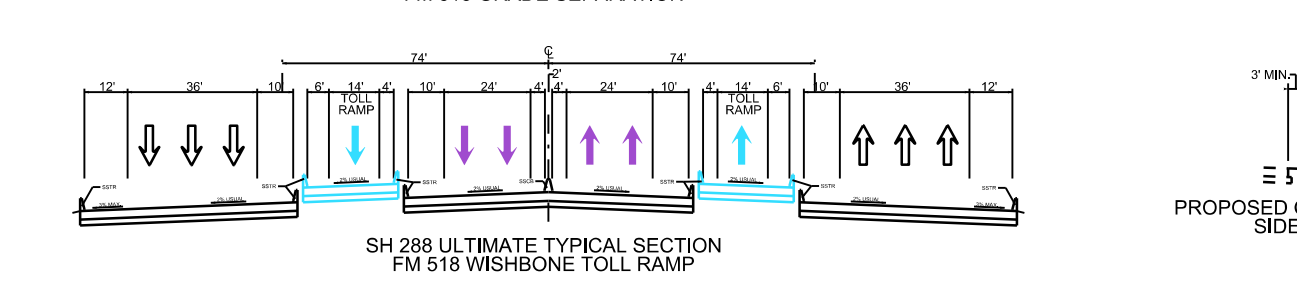
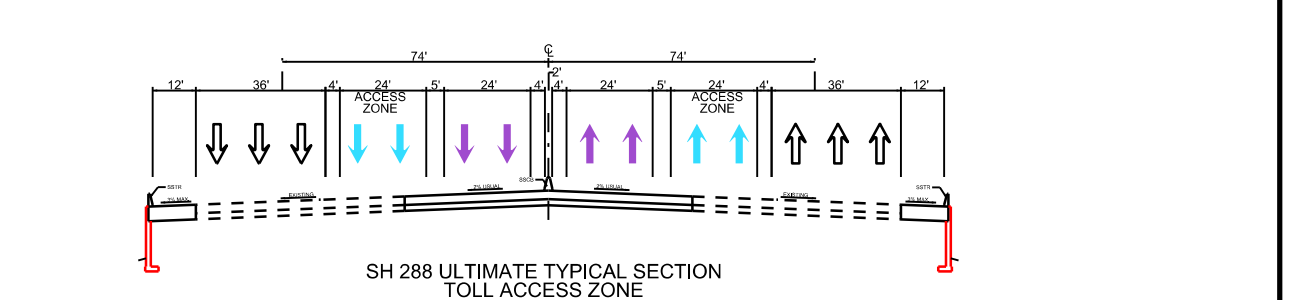
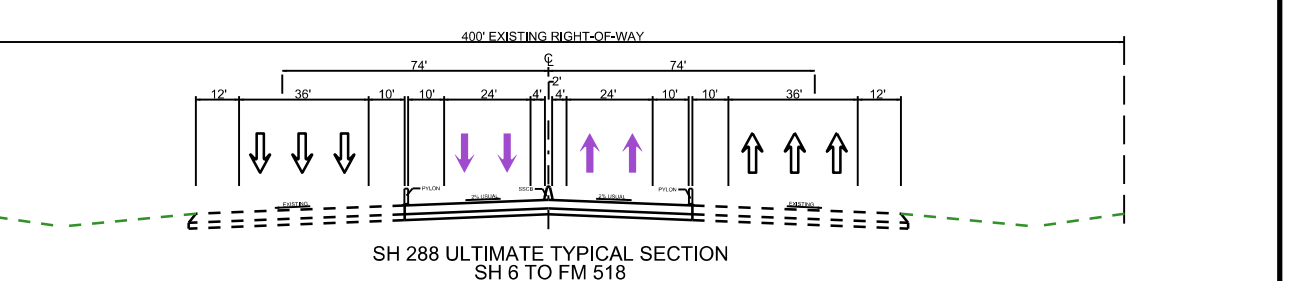
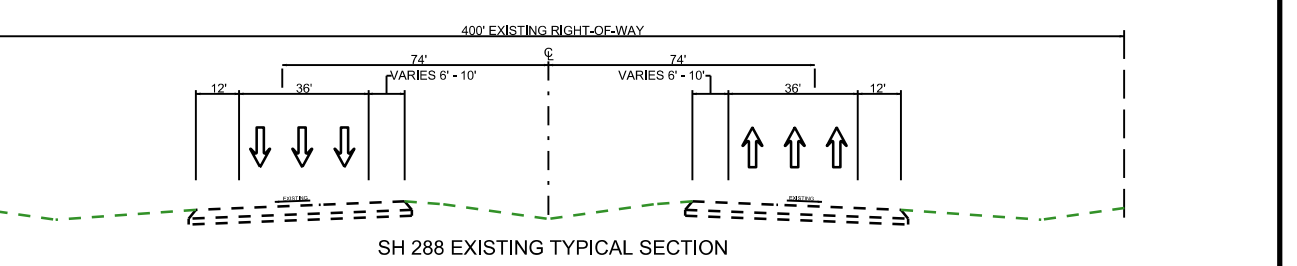
FUNCTIONAL CLASSIFICATION - URBAN PRINCIPAL ARTERIAL  
MAIN LANE/TOLL LANE DESIGN CRITERIA - URBAN FREEWAY  
RAMP/TOLL LANE DESIGN CRITERIA - URBAN FREEWAY  
FRONTAGE ROAD DESIGN CRITERIA - URBAN COLLECTOR  
FRONTAGE ROAD DESIGN CRITERIA - URBAN COLLECTOR  
FRONTAGE ROAD DESIGN CRITERIA - URBAN COLLECTOR

COLOR/FILL LEGEND

MAIN LANES  
RAMP/FRONTAGE  
TOLL LANES  
DIRECT CONNECTOR  
BRIDGE

CURVE DATA

TEXAS  
288  
TOLL



END ULTIMATE SECTION - SH 6 TO COUNTY LINE  
CSJ - 0598-02-900  
BRAZORIA COUNTY

BEGIN ULTIMATE SECTION - COUNTY LINE TO IH 610  
CSJ - 0598-01-905  
HARRIS COUNTY