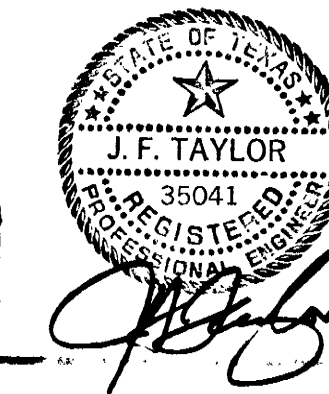


MAIN AND SUBSIDIARY CONDUIT

REF.	LENGTH (FT.)	NUMBER OF DUCTS	TYPE AND MATERIAL	SIZE (IN)	YEAR PLACED	ORDER NO.	TAX DISTRICT	REMARKS
#1	70	2	"B" PVC	4"	1981	98882	H6-031	
#2	3040	6	"B" PVC	4"	1981	98882	H6-031	
#3	1020	2	"B" PVC	4"	1981	98882	H6-031	
#4	200	4	"B" PVC	4"	1981	98882	H6-031	

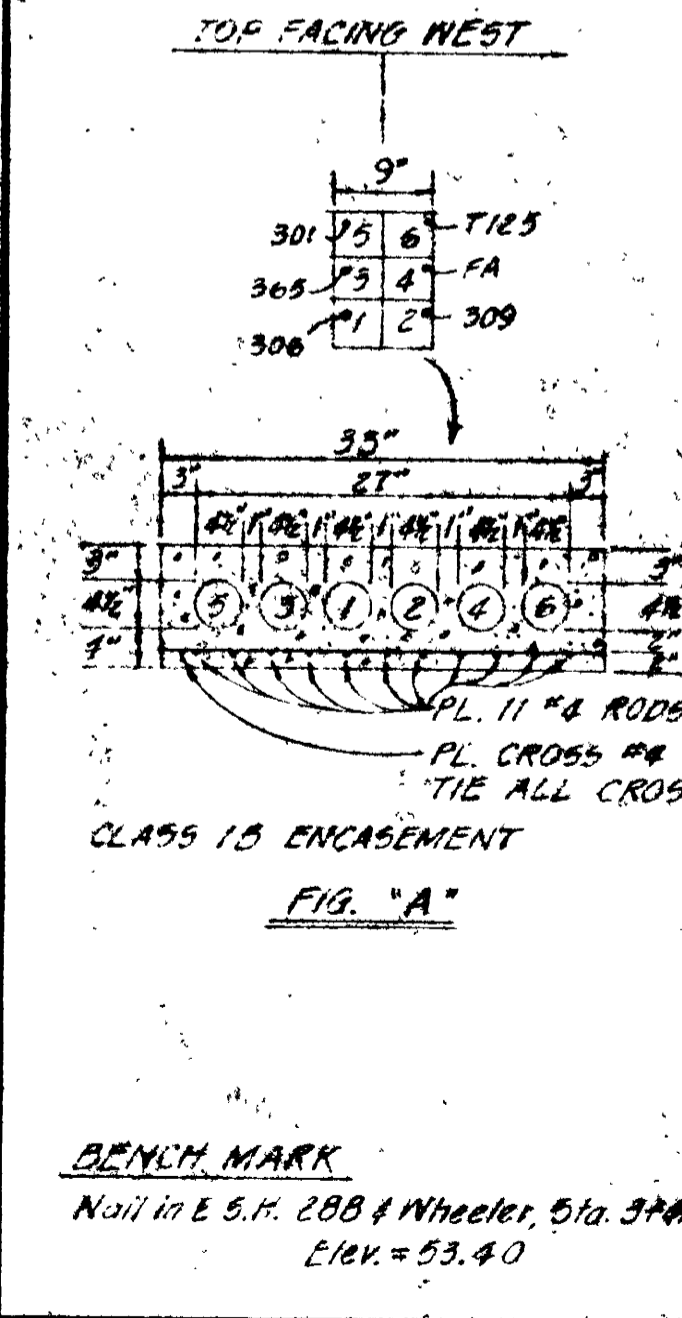
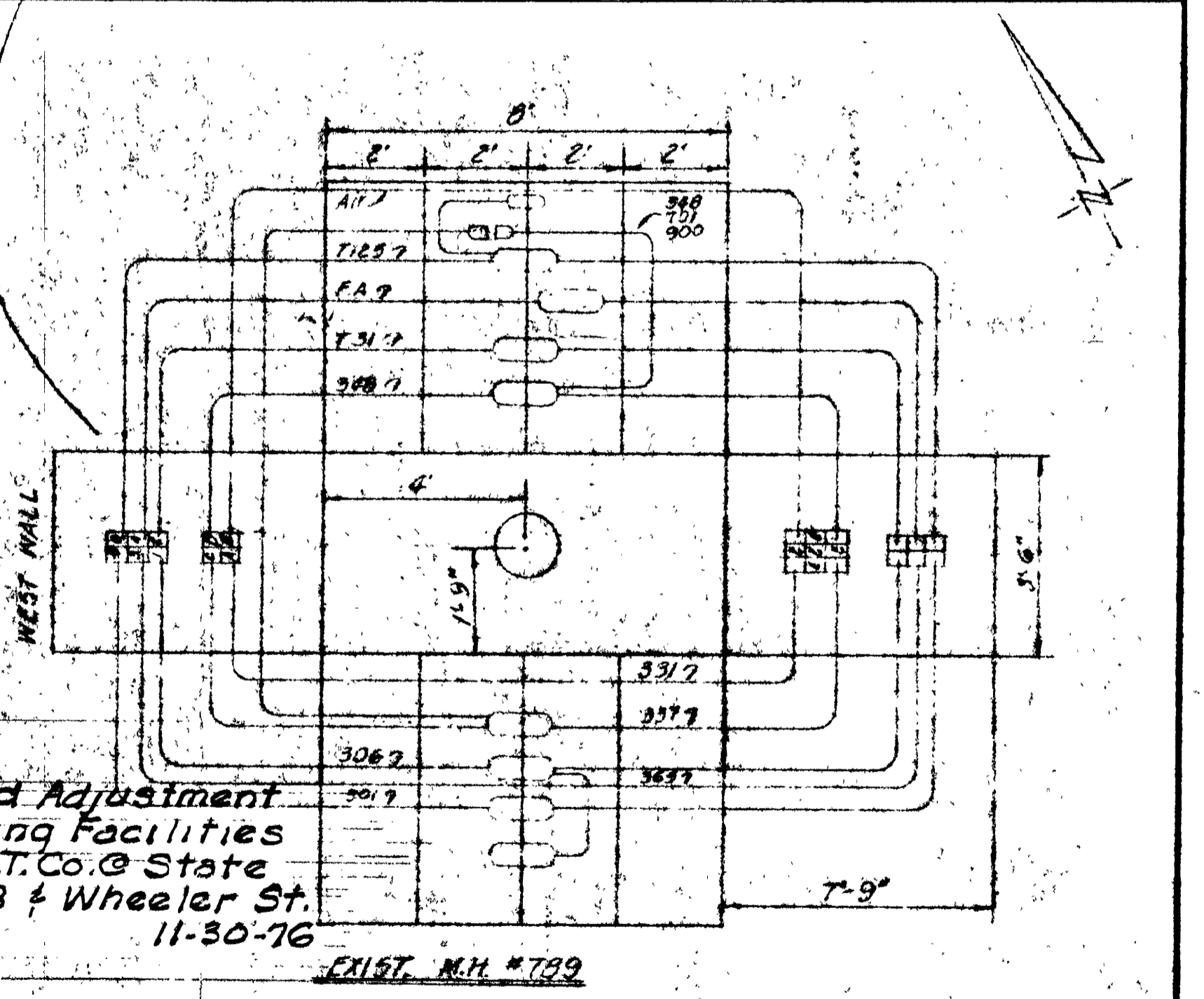
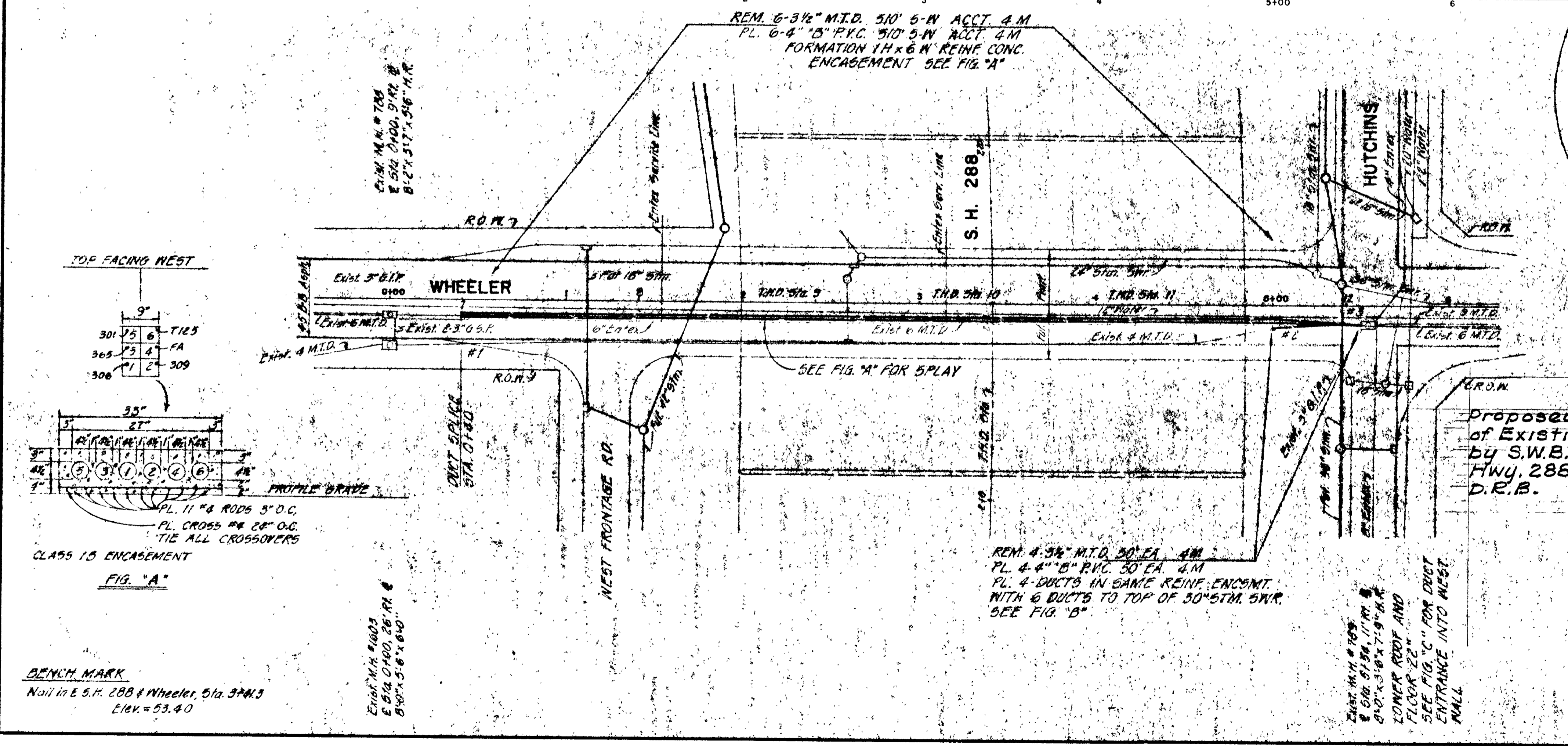
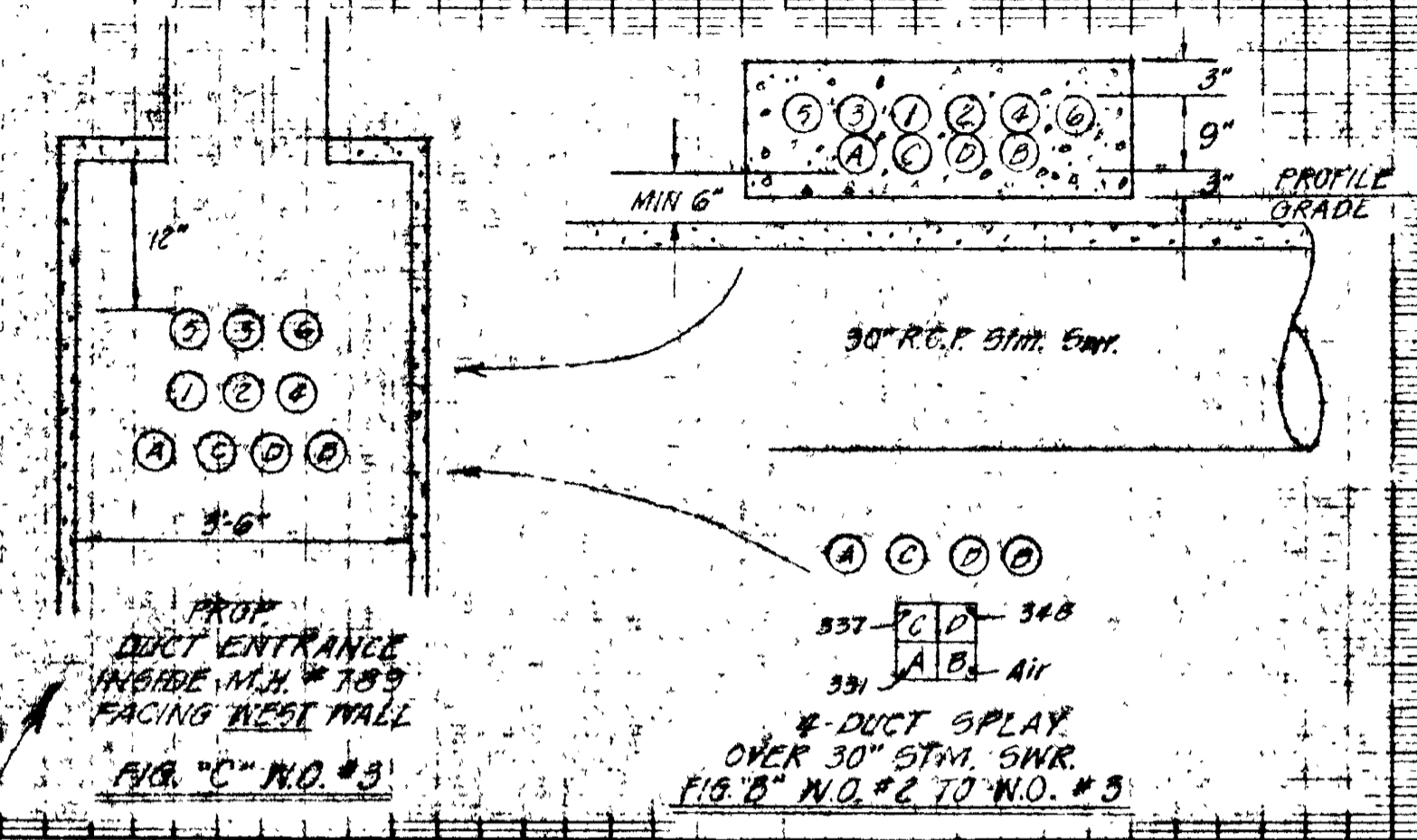
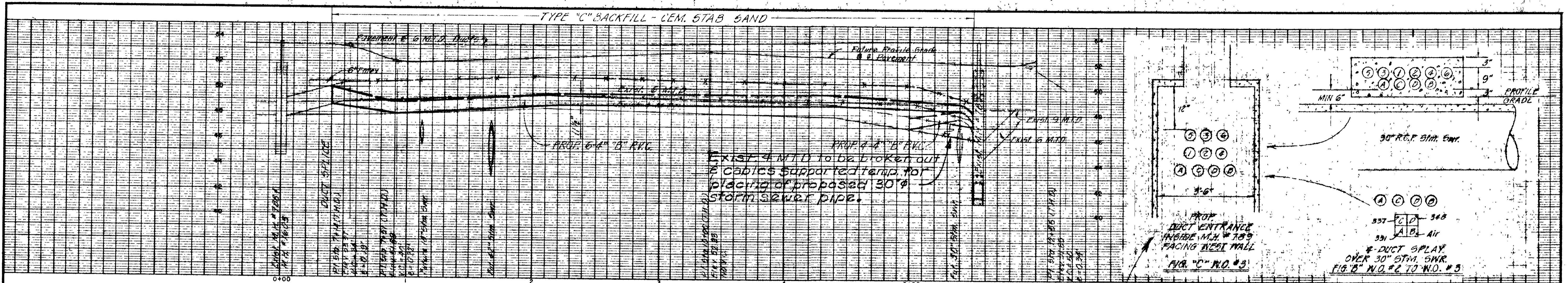
REM. 4-3 1/2" M.T.D. 50' EA. 4M
 #4 PLC. 4 SPLIT 4" B PVC. 50' EA. 4M
 PL. 4 DUCTS IN SAME REINF. ENCSMT.
 WITH 6 DUCTS TO TOP OF 30" STM. SWR.
 SEE FIG. "B"

EXIST. M.H. #789
 8' DIA. 51.54' I.D. R.I. #
 8'-0" x 3'-6" x 7'-9" H.R.
 LOWER ROOF AND
 FLOOR ROOF 22"
 SEE FIG. "C" FOR DUCT
 ENTRANCE INTO WEST
 WALL



BENCH MARK
 Nail in E.S.H. 288 & Wheeler, Sta. 3+41.3
 Elev. = 53.40

APPROVALS		WHEELER	
TRAFFIC & TRANS.		HOUSTON, TEXAS	
SEWERS		SCALE	
SANITARY SEWER		PLAN 1" = 40'	
PAYING		PROFILE HORIZ. 1" = 40'	
WATER DEPT.		PROFILE VERT. 1" = 4'	
ASST. DIR. PUB. WKS.		SOUTHWESTERN TELEPHONE CO.	
DIR. OF PUB. WKS.		L.C. Boardman	
DATE DESIGNED 2-10-77		DATE COMPLETED	
EST. NO. R0-98882		DESIGNED BY WEISSER/RR	
JOB NO. W-6000		TAX DIST. HG031	
C.O. JACKSON 521		SHEET NO. 1	
F.B. 186		WEISSER ENGINEERING COMPANY HOUSTON, TEXAS	



Proposed Adjustment
of Existing Facilities
by S.W.B.T. Co. @ State
Hwy. 288 & Wheeler St.
D.R.B.
11-30-76

APPROVALS		WHEELER HOUSTON, TEXAS	
TRAFFIC & TRANS.		SCALE PLAN 1" = 40' PROFILE HORIZ. 1" = 40' PROFILE VERT. 1" = 8'	
STORM SEWER		SOUTHWESTERN BELL TELEPHONE CO.	
SANITARY SEWER		J.C. Bowler ENGR. ASSOC.	
PAYING		DIST. ENGR.	DIV. PLANT ENGR.
DATE ISSUED		DATE CONST. COMP.	SHEET NO.
E.E. NO.		EST. NO.	DRAWN BY: WEISSER/RR
AREA NO. W-6000		C.O. JACKSON 521	TAX DIST. HG 031
JOB NO. 278-94		WEISSER ENGINEERING COMPANY HOUSTON, TEXAS	