

MFRFC 4M
 PLAC 1 TO 8
 OPER. RANGE

OPER. CODE	ACTION	MAJOR MATERIAL DESCRIPTION	ACCT. CODE	ML OR AMT.	PL	BORE	REMOVALS	
							AMOUNT	MORT. DATE
1	REMO	CONDUIT-6-MTD	4M	150'				'81
2	PLAC	PVC-C-4",6	4M	150' 900'				
3	REMO	CONDUIT-18-MCD	4M	150'				'81
4	PLAC	PVC-C-4",6	4M	150' 2700'				
5	REMO	CONDUIT-6-MCD	4M	103'				'81
6	PLAC	PVC-C-4",6	4M	103' 620'				
7	REMO	CONDUIT-18-MTD	4M	115'				'81
8	PLAC	PVC-C-4",18	4M	115' 2080'				

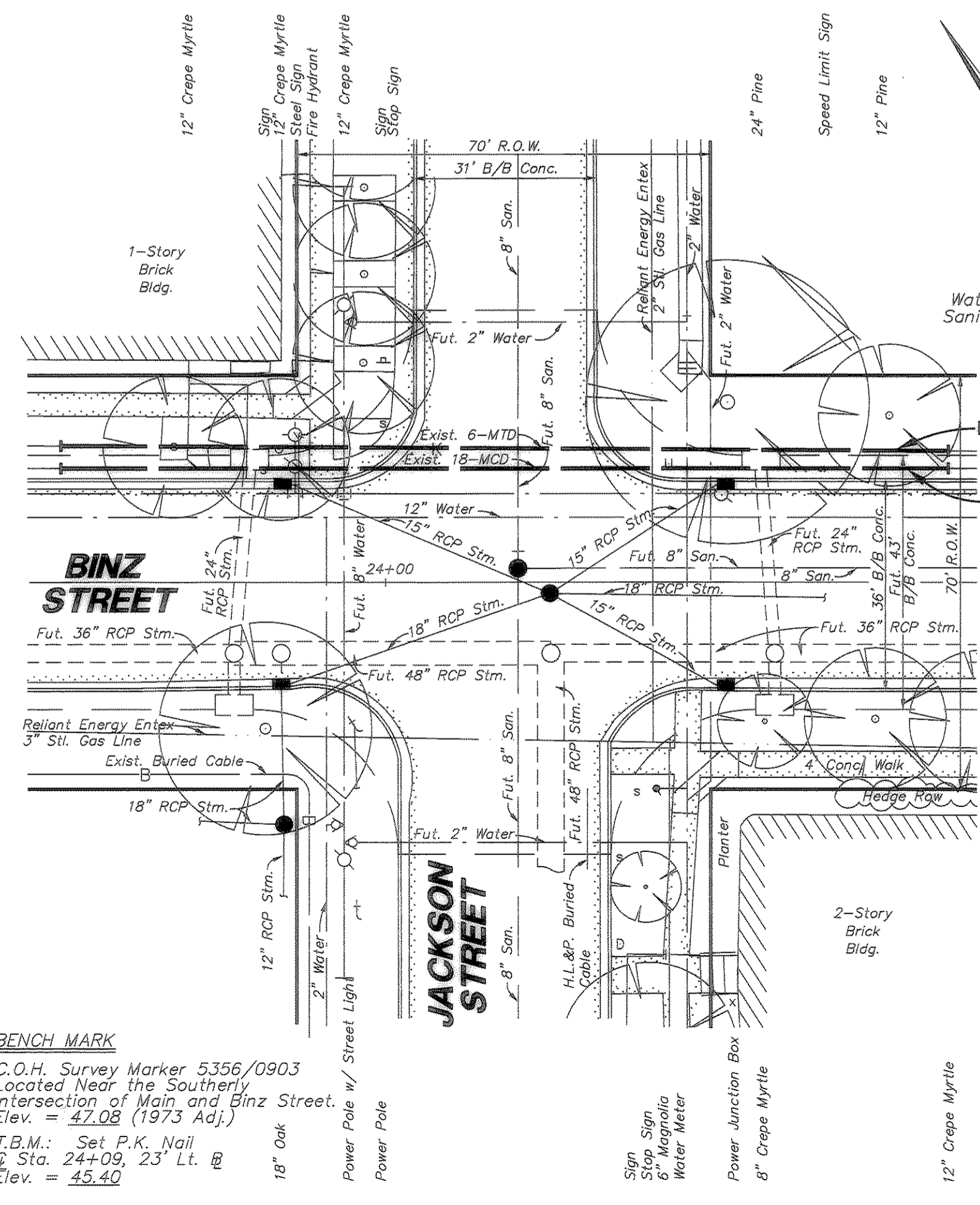
*NOTE: TY. 'C' BKFL. SHALL NOT CONFLICT WITH FUTURE SUBGRADE, FUT. STORM, OR FUT. WATER

**NOTE: USE SPLIT 'C' PVC AS REQUIRED FOR CONDUIT WITH EXISTING CABLES

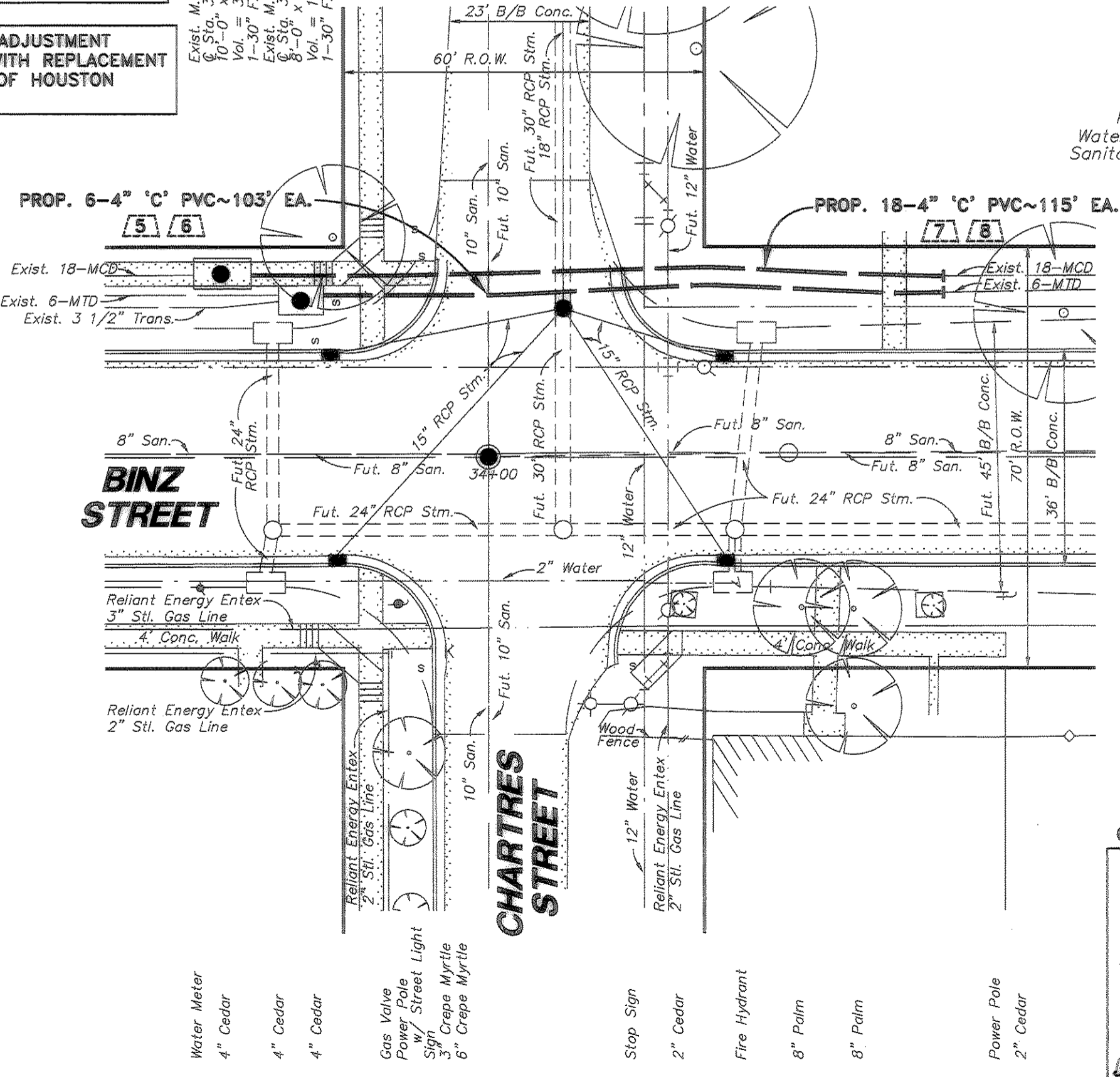
NOTE:
 S.W.B.T. CONTRACTOR SHALL COORDINATE ALL ADJUSTED S.W.B.T. CONDUIT ELEVATIONS WITH CITY OF HOUSTON CONTRACTOR AND MAINTAIN 6" MINIMUM CLEARANCE WITH ALL FUTURE CITY OF HOUSTON UTILITIES.

CONTRACTOR TO COORDINATE ADJUSTMENT OF EXIST. S.W.B.T. CONDUIT WITH REPLACEMENT OF 8" SAN. SWR. WITH CITY OF HOUSTON CONTRACTOR.

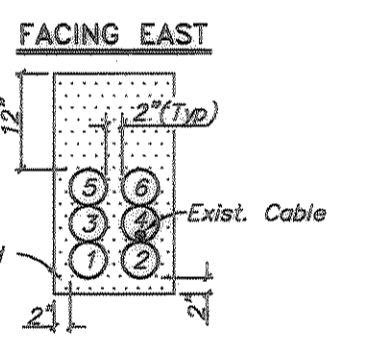
Exist. M.H. #6142
 6" Dia. 33'+65.31' LL. B
 10'-0" x 5'-0" x 7'-0" H.R.
 Vol. = 390 Cu. Ft.
 1-30" F. & C. 888
 6" Dia. 33'+65.26' LL. B
 8'-0" x 4'-0" x 5'-6" H.R.
 Vol. = 176 Cu. Ft.
 1-30" F. & C.



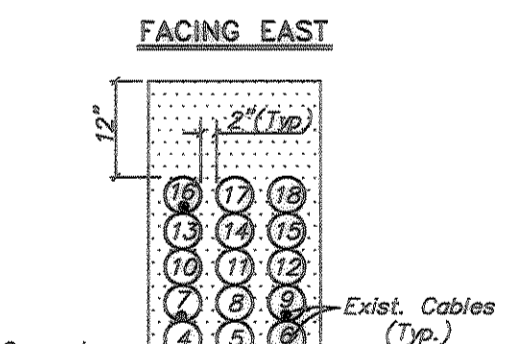
Key Map #533-B
 Water GIMS Map #5356D
 Sanitary GIMS Map #5356D



Key Map #533-B
 Water GIMS Map #5356D
 Sanitary GIMS Map #5356D



SECTION OF PROP. 6-4" DUCTS
 (SEE SHT. 'B' FOR ENCASEMENT DETAILS)



SECTION OF PROP. 18-4" DUCTS
 (SEE SHT. 'B' FOR ENCASEMENT DETAILS)

BENCH MARK
 C.O.H. Survey Marker 5356/0903
 Located Near the Southern
 Intersection of Main and Binz Street.
 Elev. = 47.08 (1973 Adj.)
 T.B.M.: Set P.K. Nail
 C. Sta. 24+09, 23' Lt.
 Elev. = 45.40

CITY OF HOUSTON
 DEPARTMENT OF PUBLIC WORKS AND ENGINEERING

REVIEWED BY

PRIVATELY FUNDED PUBLIC WORKS	CITY FUNDED PUBLIC WORKS
WATER	PROJECT MANAGER
WASTEWATER	CONSTRUCTION
STORM WATER	CHIEF ENGINEER
STREET & BRIDGE	

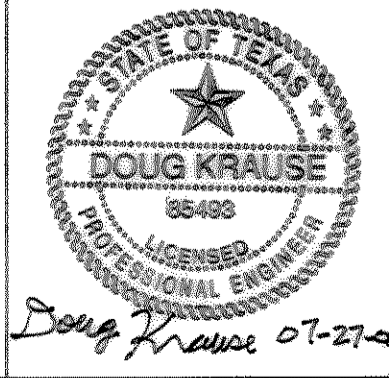
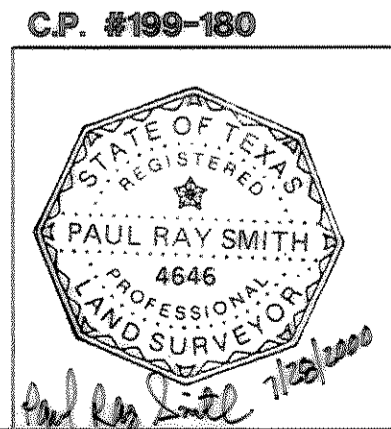
OTHER APPROVAL

TRAFFIC AND TRANSPORTATION	SPONSOR DEPARTMENT
CITY ENGINEER	DATE
DIRECTOR OF PUBLIC WORKS AND ENGINEERING	DATE
SUBMITTED:	DESIGNED BY:
SCALE: HORIZ. _____	DRAWN BY: _____
DATE: _____	SHEET NO. _____ OF _____ SHEETS
SURVEY BY: _____	CITY DWG NO: _____
F B NO: _____	

Southwestern Bell Telephone
BINZ STREET
HOUSTON, TEXAS

SCALE: PLAN 1" = 20' PROFILE VERT. 1" = 4' PROFILE HORIZ. 1" = 20'

PREPARED BY CONDUIT DISTRICT	DRAWN BY U.E.I.	ISSUE DATE 7/31/00
PREPARED BY MGR-ENG. DESIGN	AREA MGR-ENG. DESIGN	
PROJ. NO. 4757178	REC. REF.	SHEET 104
AREA NO. WK-6522	C.O. JACKSON '522'	TAX DIST. HG-031



JA-V-3A