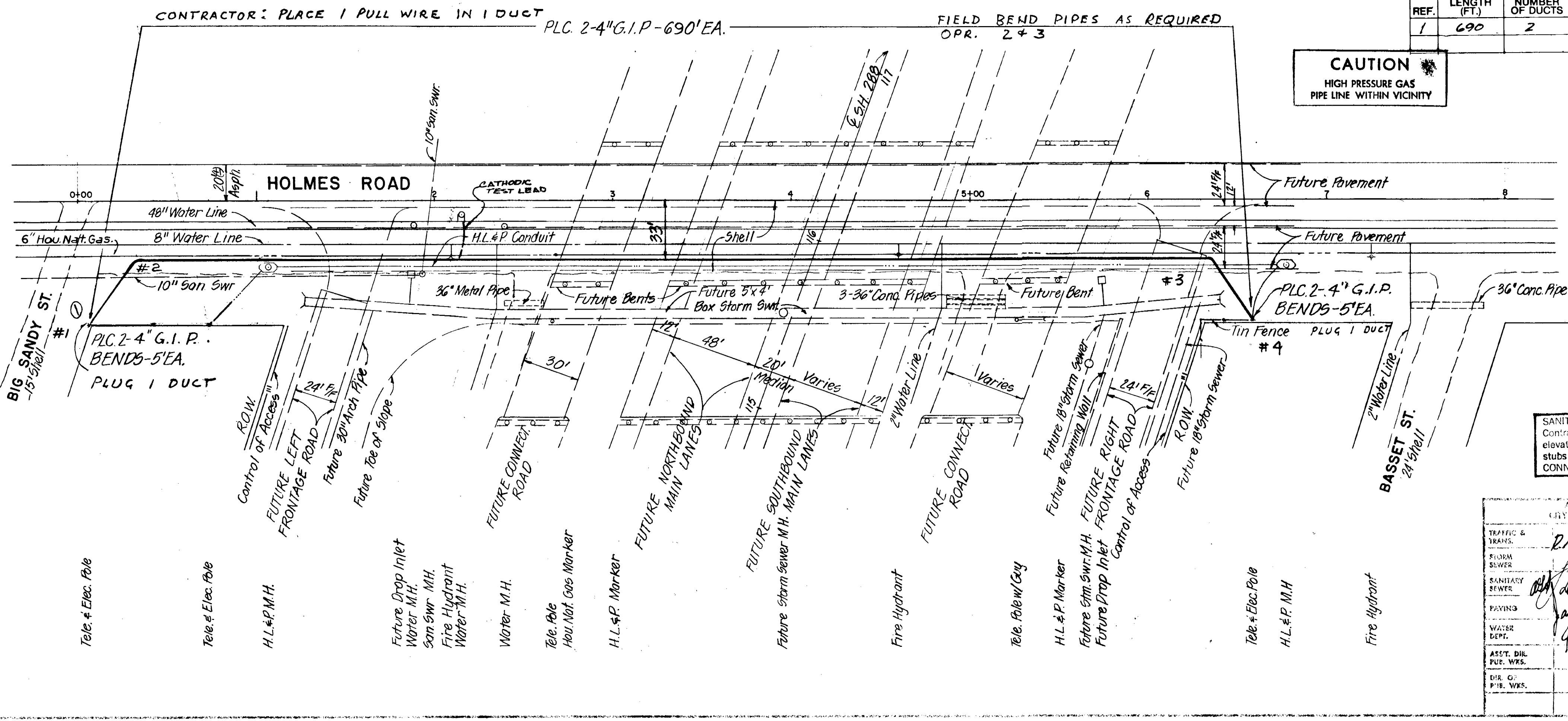


MAIN AND SUBSIDIARY CONDUIT

REF.	LENGTH (FT.)	NUMBER OF DUCTS	TYPE AND MATERIAL	SIZE (IN)	YEAR PLACED	ORDER NO.	TAX DISTRICT	REMARKS
1	690	2	GIP	4"	1981	90755	H6031	NO #1 TO NO #2



CAUTION
HIGH PRESSURE GAS
PIPE LINE WITHIN VICINITY

PLEASE CALL 223-4567 (CONA)
48 HOURS PRIOR TO ANY
DIGGING OPERATION

KEY MAP 533T
RC REF 45, 65.

CONTRACTOR
NOTIFY CITY OF HOUSTON,
CONSTRUCTION DIVISION,
222-4431, PRIOR TO
COMMENCING CONSTRUCTION.

ALL WORK TO BE PURSUED IN
ACCORDANCE WITH CITY ORDINANCE
41-30. NO WORKING BETWEEN THE
HOURS OF 7:00 TO 8:30 A.M. AND
4:00 TO 8:00 P.M.

NOTIFY TRAFFIC AND TRANSPORTATION
DEPT. IN WRITING 48 HOURS PRIOR
TO STARTING WORK.

SANITARY SEWER NOTE:
Contractor to establish final ground
elevation as necessary for clear cutting,
stubs and house connections.
CONNECTIONS SHOWN ARE APPROXIMATE

APPROVALS CITY OF HOUSTON TRAFFIC & TRANS. <i>R.P. Armstrong</i> PUBLIC WORKS <i>[Signature]</i> SANITARY SEWER <i>[Signature]</i> PAVING <i>[Signature]</i> WATER DEPT. <i>[Signature]</i> ASST. DIR. PUE. WKS. <i>W.C. Lieb</i> DIR. OF PUE. WKS. <i>E.B. Cope</i>		PROPOSED S.H. 288 AT HOLMES RD. HOUSTON, TEXAS SCALE SOUTHWESTERN BELL TELEPHONE CO. DATE ISSUED: 12-28-73 E.E. NO. 90755 AREA NO. N-8000 JOB NO. WK-4734	
DATE CONST. COMPD. 12-28-73 DRAWN BY WEISSER/WF C.O. REPUBLIC 734 DIST. HG 031		SHEET NO. 3 DIV. PLANN'G ENGR. WEISSER ENGINEERING COMPANY HOUSTON, TEXAS	

RE-COISOLATED 4
RE-CD