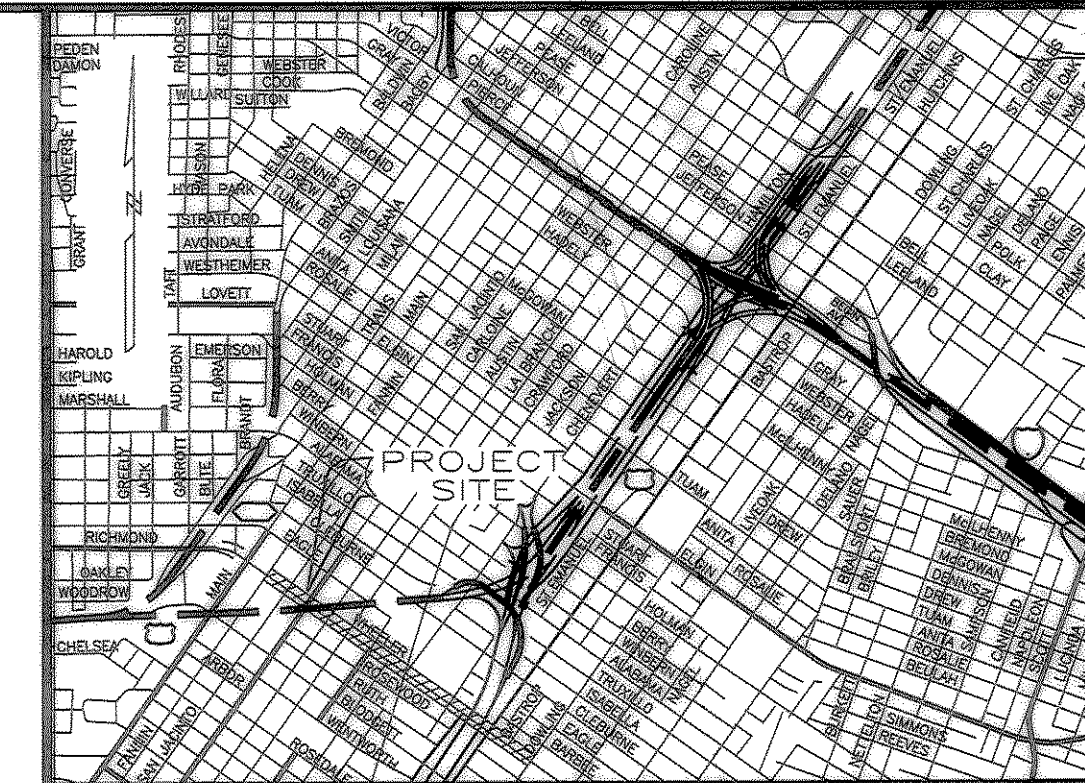


Southwestern Bell

HOUSTON EAST WK6522 CENTRAL UNIT JACKSON "522"
 PROPOSED CONDUIT ON WHEELER STREET FROM
 EXIST MH #782 ON FANNIN STREET TO EXIST. MH #799
 ON DELANO STREET.



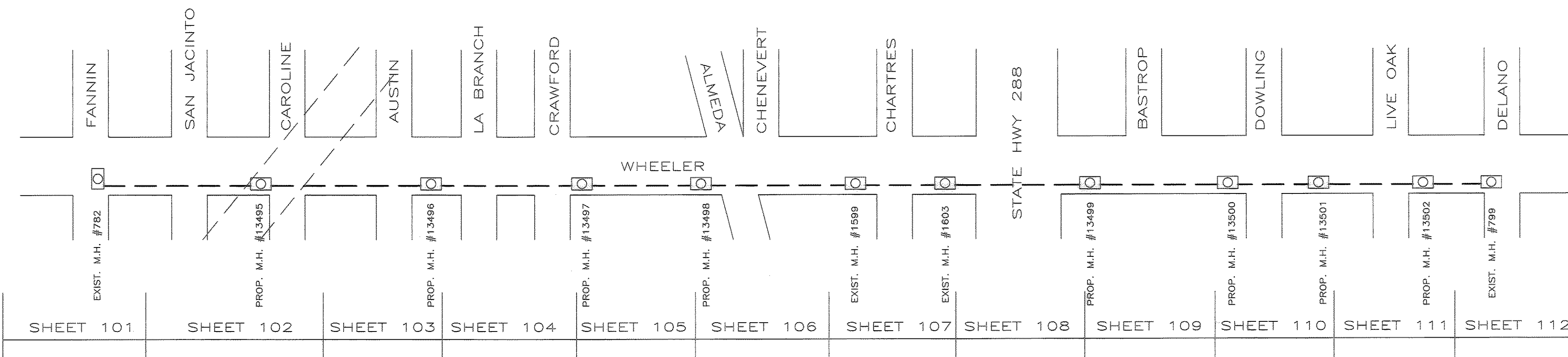
VICINITY MAP
 KEY MAP NO. 493 X & Y
 GIMS MAP NO. 5356 D & 5456 C

INDEX AND COVER SHEET
 SHEET 1 - 12 PLAN AND PROFILE SHEET
 SHEET C PAVEMENT REPAIR DETAIL
 SHEET C1 SIDEWALK REPAIR DETAIL
 SHEET D1-D5 TRAFFIC CONTROL

MAJOR MATERIALS

CONDUIT :
 4" - "C" PVC (A.T. 8546) 43,140 DU.FT.
 (5571 TR. FT.)
 MISCELLANEOUS

- 1 - 18" X 130' STEEL CASING
- 2 - 18" X 42' STEEL CASING
- 1 - 18" X 105' STEEL CASING
- 1 - 18" X 160' STEEL CASING
- 1 - 18" X 112' STEEL CASING
- 2 - 18" X 75' STEEL CASING
- 1 - 18" X 23' STEEL CASING
- 1 - 18" X 82' STEEL CASING
- 1 - 18" X 150' STEEL CASING
- 1 - 18" X 62' STEEL CASING
- 1 - 18" X 101' STEEL CASING
- 1 - 18" X 152' STEEL CASING
- 1 - 18" X 90' STEEL CASING
- 1 - 18" X 82' STEEL CASING
- 1 - 18" X 93' STEEL CASING
- 1 - 18" X 38' STEEL CASING
- 1 - 18" X 60' STEEL CASING
- 1 - 18" X 16' STEEL CASING
- 2 - 18" X 165' STEEL CASING
- 1 - 18" X 24' STEEL CASING
- 1 - 18" X 100' STEEL CASING
- 4 - 18" X 51' STEEL CASING
- 1 - 18" X 140' STEEL CASING
- 1 - 18" X 142' STEEL CASING
- 2 - 18" X 113' STEEL CASING
- 1 - 18" X 122' STEEL CASING
- 2 - 18" X 46' STEEL CASING
- 1 - 18" X 30' STEEL CASING
- 1 - 18" X 45' STEEL CASING
- 2 - 18" X 79' STEEL CASING
- 1 - 18" X 96' STEEL CASING



UTILITY NOTE:
 The Contractor shall be fully responsible for any and all damages to the existing public and or private utility lines, including but not limited to water lines, wastewater collection systems and storm sewers, during construction. All damages shall be repaired in accordance with City of Houston, Department of Public Works and Engineering "Standard Construction Specifications" with latest addenda and amendments thereto, with no cost to the Public.

APPROVED
 CITY OF HOUSTON

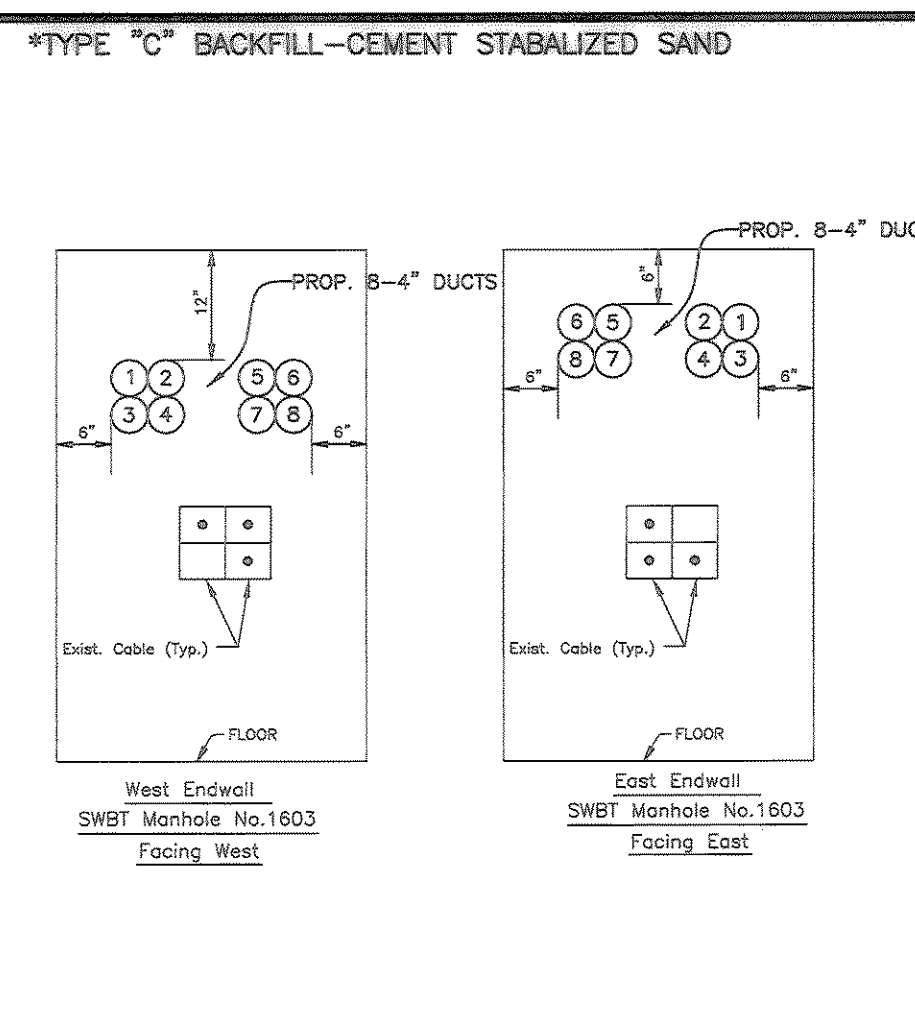
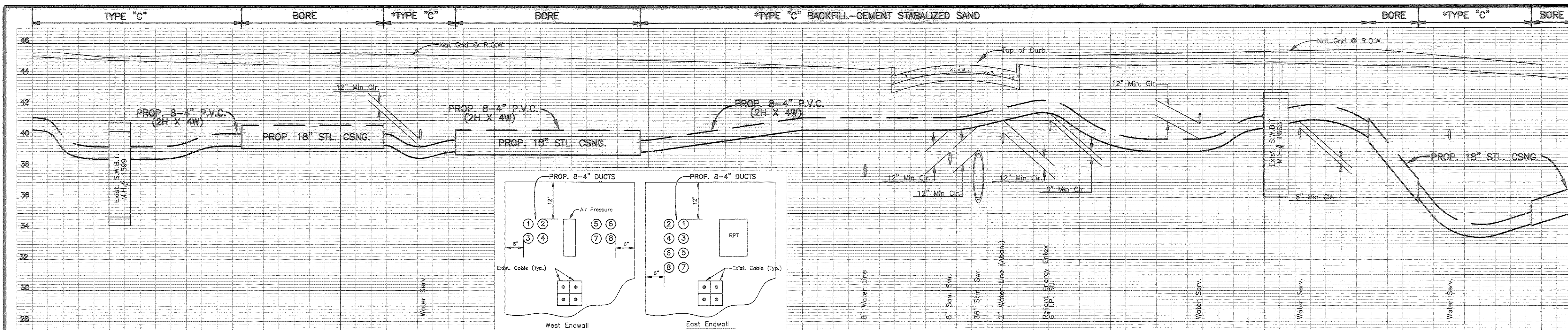
Herbert Lum 7-9-2000
 CITY ENGINEER DATE
 HERBERT LUM, P.E.
Herbert Lum 7-9-2000
 DIRECTOR OF PUBLIC WORKS AND ENGINEERING DATE

COH Log No: 2000-0438 DWG No.
 CONTRACTOR SHALL NOTIFY THE CITY OF HOUSTON, DEPARTMENT OF PUBLIC WORKS AND ENGINEERING, ENGINEERING CONSTRUCTION DIVISION (TELEPHONE NO. 713-837-7000) 48 HOURS BEFORE STARTING WORK ON THIS PROJECT.

NOTE THIS PROPERTY IS NOT IN THE 100-YEAR FLOOD ZONE PER F.I.R.M. MAP COMMUNITY 480298 0880 X DATED APRIL 20, 2000 AND IS DESIGNATED TO BE IN ZONE "X." * THIS INFORMATION IS BASED ON GRAPHIC PLOTTING ONLY. WE DO NOT ASSUME RESPONSIBILITY FOR EXACT DETERMINATION.

C.P. No. 100-017	ESTIMATE REQUEST NO. 4742529	AREA NO. WK6522	DATE ISSUED 04/26/00	NUMBER OF SHEETS 12	A
------------------	------------------------------	-----------------	----------------------	---------------------	---

WHEELER STREET



T.P. #6
Top of 60-D Nail
Elev. = 44.98

SWBT Electric Box
Exist. SWBT M.H.# 797
6'-0\"/>

NOTE:
CONTRACTOR TO TAKE NECESSARY PRECAUTIONS TO INSURE INTEGRITY OF EXISTING PAVEMENT DURING CONSTRUCTION. (USE SOLID WOOD SHORING AS REQUIRED).

Exist. M.H.# 1599 to Exist. M.H.# 1603
379' C-C 371' W-W

NOTE:
THE TYPE, SIZE, LOCATION AND OWNERSHIP OF EXISTING UTILITIES HAS BEEN OBTAINED FROM RECORDED DRAWINGS FURNISHED BY THE OWNERS. INFORMATION DERIVED FROM THESE SOURCES IS BELIEVED TO BE THE MOST RELIABLE AND IS PROVIDED FOR THE CONTRACTOR'S INFORMATION ONLY. THE CONTRACTOR SHOULD EXERCISE CAUTION WHEN EXCAVATING IN THE VICINITY OF UNDERGROUND UTILITIES AND NOTIFY THE OWNERS OF THE RESPECTIVE UTILITIES SO THAT THE OWNER'S REPRESENTATIVE MAY BE PRESENT TO VERIFY LOCATIONS. NO WARRANTY IS MADE AS TO THE ACCURACY OR COMPLETENESS OF UTILITY LOCATIONS SHOWN ON THESE DRAWINGS.

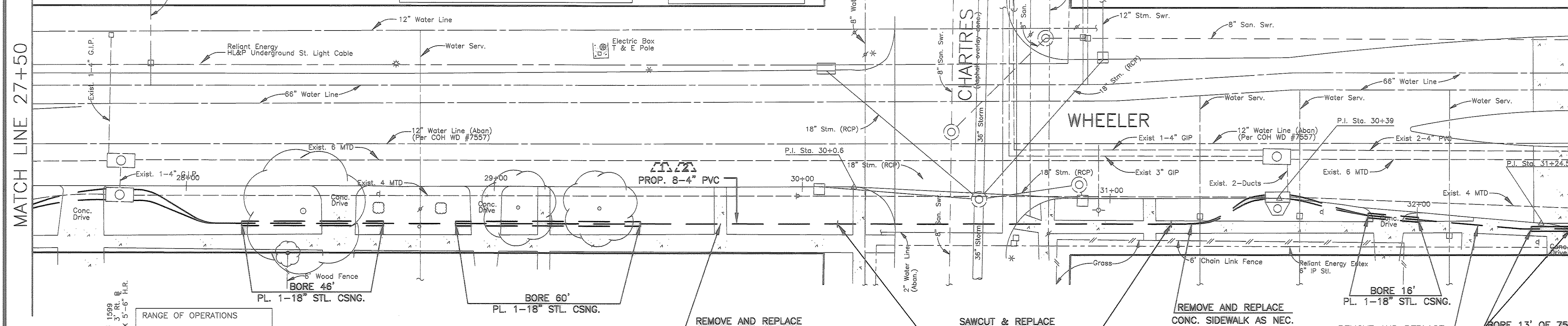
NOTE:
CONTRACTOR MUST COMPLY WITH OSHA'S SPECIFICATIONS AND BELL SYSTEM PRACTICES (822-020-020, SECTION II) ON TRENCHING, BACKFILLING AND EXCAVATIONS REQUIREMENTS.

NOTE:
CONTRACTOR TO ADHERE TO OSHA'S REQUIREMENTS FOR A "SUBSTANTIAL BARRICADE" AROUND ANY WORK LOCATION HAVING AN OPEN PIT.

NOTE:
AT THE TIME OF SURVEY THE FOLLOWING UTILITY COMPANY'S HAVE NOT RESPONDED TO OUR UTILITY REQUEST: M.C.I. TELECOMMUNICATIONS, A.T. & T., PHONOSCOPE, METROPOLITAN FIBER SYSTEM, T.C.I. CABLE. CONTRACTOR TO CONTACT THE U.C.C. AT (713) 223-4567 OR 1-800-669-8344 PRIOR TO CONSTRUCTION.

Exist. M.H.# 1603 to Prop. M.H.#13499 (Sht. 109)
647' C-C 637' W-W

NOTE:
THE LOCATIONS OF SOUTHWESTERN BELL TELEPHONE CO. UTILITIES ARE SHOWN IN AN APPROXIMATE WAY ONLY. THE CONTRACTOR SHALL DETERMINE THE EXACT LOCATION BEFORE COMMENCING WORK. HE AGREES TO BE FULLY RESPONSIBLE FOR ANY AND ALL DAMAGES WHICH MIGHT BE OCCASIONED BY HIS FAILURE TO EXACTLY LOCATE AND PRESERVE THESE UNDERGROUND UTILITIES. PLEASE CALL 713-223-4567 BEFORE YOU DIG.



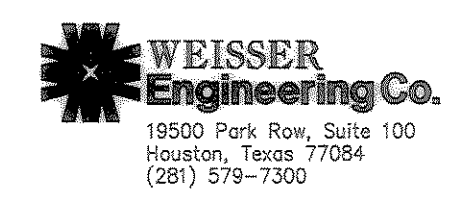
OPER.	ACTION CODE	MAJOR MATERIAL DESCRIPTION	ACCT. CODE	ML OR AMT.	PL	BORE	REMOVALS
							AMOUNT MORT. DATE
1	PLAC	TRENCH-8-MPC	4C	371'			
2	PLAC	PVC-C-4",8	4C		2968'	106'	

CAUTION UNDERGROUND GAS FACILITIES
LOCATIONS OF RELIANT ENERGY ENTEX MAIN LINES (TO INCLUDE UNIT GAS TRANSMISSION AND/OR INDUSTRIAL GAS SUPPLY CORPORATION WHERE APPLICABLE) ARE SHOWN IN AN APPROXIMATE LOCATION ONLY. SERVICE LINES ARE USUALLY NOT SHOWN. THE CONTRACTOR SHALL CONTACT THE UTILITY COORDINATING COMMITTEE AT (713) 223-4567 OR 1-800-669-8344 A MINIMUM OF 48 HOURS PRIOR TO CONSTRUCTION TO HAVE MAIN AND SERVICE LINES FIELD LOCATED.

* WHEN RELIANT ENERGY ENTEX PIPE LINE MARKINGS ARE NOT VISIBLE, CALL (713) 967-8037 (7:00 A.M. TO 4:30 P.M.) FOR STATUS OF LINE LOCATION REQUEST BEFORE EXCAVATION BEGINS.
* WHEN EXCAVATING WITHIN EIGHTEEN INCHES (18") OF THE INDICATED LOCATION OF RELIANT ENERGY ENTEX FACILITIES, ALL EXCAVATION MUST BE ACCOMPLISHED USING NONMECHANIZED EXCAVATION PROCEDURES.
* WHEN RELIANT ENERGY ENTEX FACILITIES ARE EXPOSED, SUFFICIENT SUPPORT MUST BE PROVIDED TO THE FACILITIES TO PREVENT EXCESSIVE STRESS ON THE PIPING.

THE CONTRACTOR IS FULLY RESPONSIBLE FOR ANY DAMAGES CAUSED BY HIS FAILURE TO EXACTLY LOCATE AND PRESERVE THESE UNDERGROUND FACILITIES.

WARNING
OVERHEAD LINES MAY EXIST ON THE PROPERTY, WE HAVE NOT ATTEMPTED TO MARK THOSE LINES SINCE THEY ARE CLEARLY VISIBLE, BUT YOU SHOULD LOCATE THEM PRIOR TO BEGINNING ANY CONSTRUCTION. TEXAS LAW, SECTION 752, HEALTH & SAFETY CODE, FORBIDS ALL ACTIVITIES IN WHICH PERSONS OR THINGS MAY COME WITHIN SIX (6) FEET OF LIVE OVERHEAD HIGH VOLTAGE LINES. PARTIES RESPONSIBLE FOR THE WORK, INCLUDE CONTRACTORS, ARE LEGALLY RESPONSIBLE FOR SAFETY OF CONSTRUCTION WORKERS UNDER THIS LAW. THIS LAW CARRIES BOTH CRIMINAL AND CIVIL LIABILITY. TO ARRANGE FOR LINES TO BE TURNED OFF OR MOVED CALL HL&P AT (713) 207-7777.



CITY OF HOUSTON
DEPARTMENT OF PUBLIC WORKS AND ENGINEERING

REVIEWED BY

PRIVATELY FUNDED PUBLIC WORKS	CITY FUNDED PUBLIC WORKS
WATER	PROJECT MANAGER
WASTEWATER	CONSTRUCTION
STORM WATER	CHIEF ENGINEER
STREET & BRIDGE	OTHER APPROVAL
TRAFFIC AND TRANSPORTATION	SPONSOR DEPARTMENT

CITY ENGINEER DATE
DIRECTOR OF PUBLIC WORKS AND ENGINEERING DATE

SUBMITTED: SCALE: 1"=20'H; 1"=4' V
DATE: 01/24/00
SURVEY BY: F B NO: 1850

DESIGNED BY: WEC
DRAWN BY: WEC
SHEET NO 7 OF 20 SHEETS
CITY DWG NO:

Southwestern Bell Telephone
WHEELER STREET
HOUSTON, TEXAS

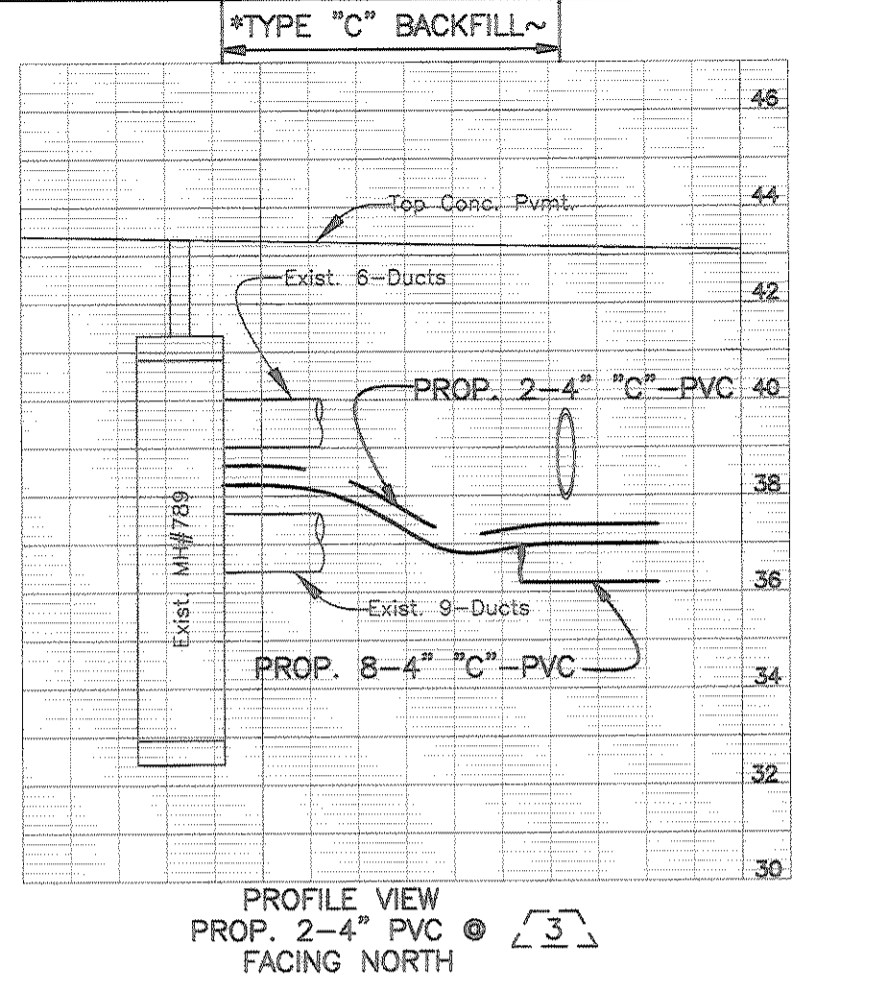
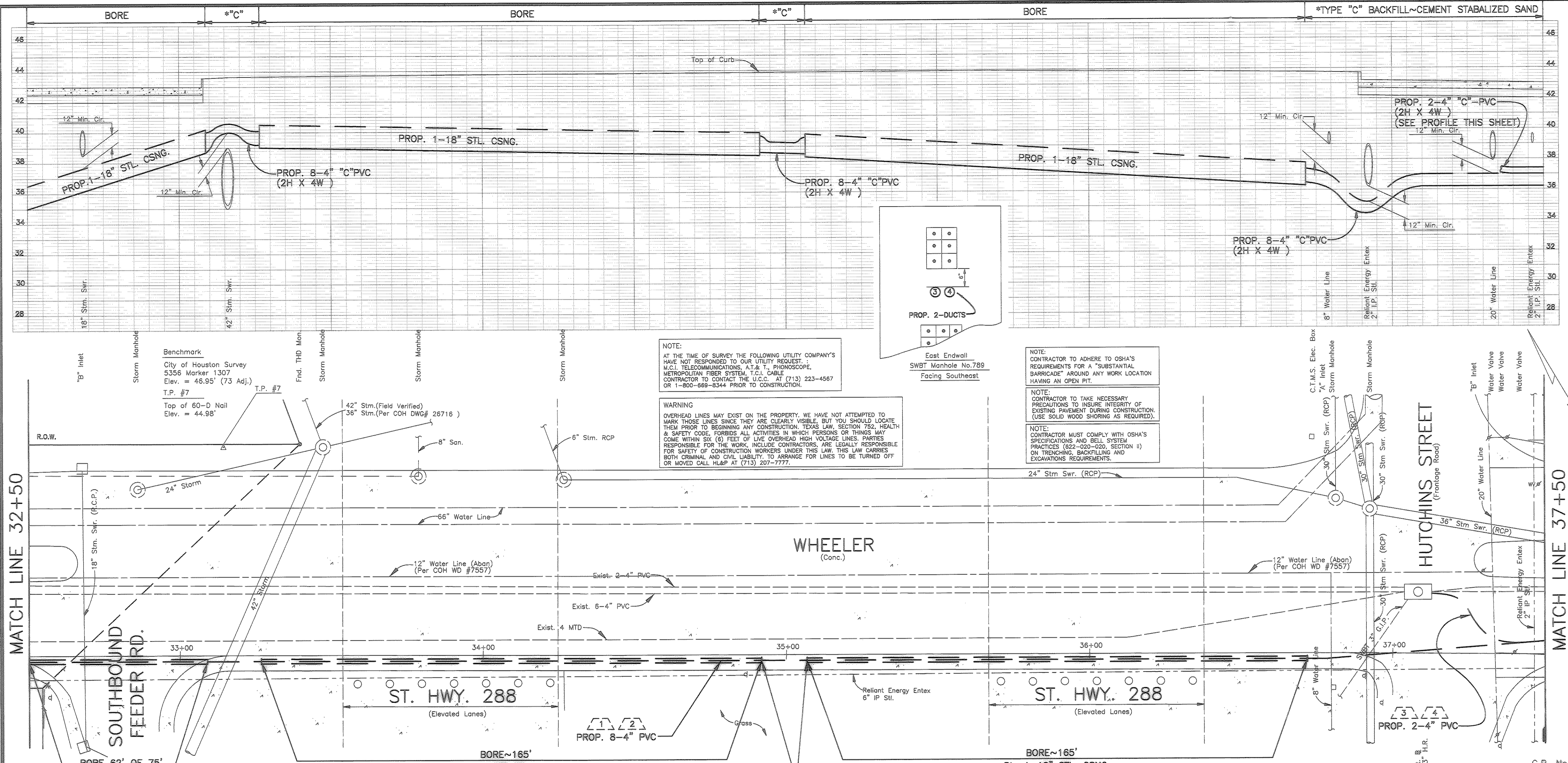
SCALE: PLAN 1" = 20' PROFILE HORIZ 1" = 20' PROFILE VERT 1" = 4'

PREPARED BY CONDUIT DISTRICT
DRAWN BY WEC
ISSUE DATE 5/8/00

PREPARED BY E. J. Eubanks
MANAGER ENG.(DESIGN)
DRAWN BY John Tufano
AREA MANAGER ENG.(DESIGN)

PROJ. No. 4742529
AREA No. WK6522
REC. REF. No. 522
TAX. DIST. HG-031
SHEET 107

S0486 WEISSER ENGINEERING COMPANY



NOTE:
 AT THE TIME OF SURVEY THE FOLLOWING UTILITY COMPANY'S HAVE NOT RESPONDED TO OUR UTILITY REQUEST:
 M.C.I. TELECOMMUNICATIONS, A.T. & T., PHONOSCOPE, METROPOLITAN FIBER SYSTEM, T.C.I. CABLE
 CONTRACTOR TO CONTACT THE U.C.C. AT (713) 223-4567 OR 1-800-669-8344 PRIOR TO CONSTRUCTION.

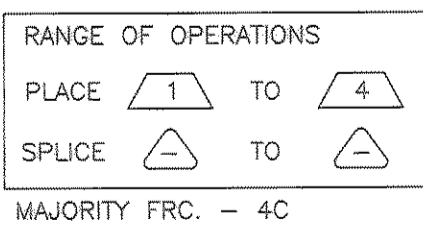
WARNING
 OVERHEAD LINES MAY EXIST ON THE PROPERTY. WE HAVE NOT ATTEMPTED TO MARK THOSE LINES SINCE THEY ARE CLEARLY VISIBLE. BUT YOU SHOULD LOCATE THEM PRIOR TO BEGINNING ANY CONSTRUCTION. TEXAS LAW, SECTION 752, HEALTH & SAFETY CODE, FORBIDS ALL ACTIVITIES IN WHICH PERSONS OR THINGS MAY COME WITHIN SIX (6) FEET OF LIVE OVERHEAD HIGH VOLTAGE LINES. PARTIES RESPONSIBLE FOR THE WORK, INCLUDE CONTRACTORS, ARE LEGALLY RESPONSIBLE FOR SAFETY OF CONSTRUCTION WORKERS UNDER THIS LAW. THIS LAW CARRIES BOTH CRIMINAL AND CIVIL LIABILITY. TO ARRANGE FOR LINES TO BE TURNED OFF OR MOVED CALL H&P AT (713) 207-7777.

NOTE:
 CONTRACTOR TO TAKE NECESSARY PRECAUTIONS TO INSURE INTEGRITY OF EXISTING PAVEMENT DURING CONSTRUCTION. (USE SOLID WOOD SHORING AS REQUIRED).

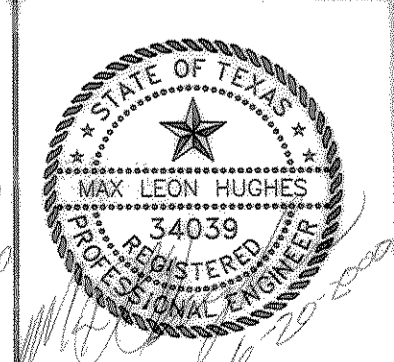
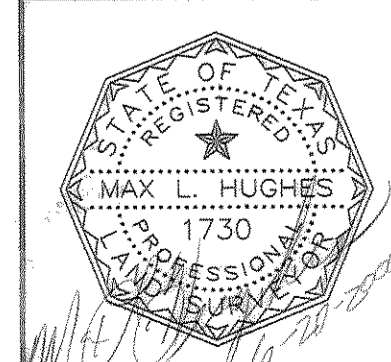
NOTE:
 CONTRACTOR MUST COMPLY WITH OSHA'S SPECIFICATIONS AND BELL SYSTEM PRACTICES (822-029-020, SECTION II) ON TRENCHING, BACKFILLING AND EXCAVATION REQUIREMENTS.

OPER.	ACTION CODE	MAJOR MATERIAL DESCRIPTION	ACCT. CODE	ML OR AMT.	PL	BORE	REMOVALS	
							AMOUNT	MORT. DATE
1	PLAC	TRENCH-8-MPC	4C	581'				
2	PLAC	PVC-C-4", 8	4C	4648'	421'			
3	PLAC	TRENCH-2-MPC	4C	34'				
4	PLAC	PVC-C-4", 2	4C	68'				

CAUTION UNDERGROUND GAS FACILITIES
 LOCATIONS OF RELIANT ENERGY ENTEX MAIN LINES (TO INCLUDE UNIT GAS TRANSMISSION AND/OR INDUSTRIAL GAS SUPPLY CORPORATION WHERE APPLICABLE) ARE SHOWN IN AN APPROXIMATE LOCATION ONLY. SERVICE LINES ARE USUALLY NOT SHOWN. THE CONTRACTOR SHALL CONTACT THE UTILITY COORDINATING COMMITTEE AT (713) 223-4567 OR 1-800-669-8344 A MINIMUM OF 48 HOURS PRIOR TO CONSTRUCTION TO HAVE MAIN AND SERVICE LINES FIELD LOCATED.
 * WHEN RELIANT ENERGY ENTEX PIPE LINE MARKINGS ARE NOT VISIBLE, CALL (713) 967-8037 (7:00 A.M. TO 4:30 P.M.) FOR STATUS OF LINE LOCATION REQUEST BEFORE EXCAVATION BEGINS.
 * WHEN EXCAVATING WITHIN EIGHTEEN INCHES (18") OF THE INDICATED LOCATION OF RELIANT ENERGY ENTEX FACILITIES, ALL EXCAVATION MUST BE ACCOMPLISHED USING NONMECHANIZED EXCAVATION PROCEDURES.
 * WHEN RELIANT ENERGY ENTEX FACILITIES ARE EXPOSED, SUFFICIENT SUPPORT MUST BE PROVIDED TO THE FACILITIES TO PREVENT EXCESSIVE STRESS ON THE PIPING.
 THE CONTRACTOR IS FULLY RESPONSIBLE FOR ANY DAMAGES CAUSED BY HIS FAILURE TO EXACTLY LOCATE AND PRESERVE THESE UNDERGROUND FACILITIES.



NOTE:
 THE LOCATIONS OF SOUTHWESTERN BELL TELEPHONE CO. UTILITIES ARE SHOWN IN AN APPROXIMATE WAY ONLY. THE CONTRACTOR SHALL DETERMINE THE EXACT LOCATION BEFORE COMMENCING WORK. HE AGREES TO BE FULLY RESPONSIBLE FOR ANY AND ALL DAMAGES WHICH MIGHT BE OCCASIONED BY HIS FAILURE TO EXACTLY LOCATE AND PRESERVE THESE UNDERGROUND UTILITIES. PLEASE CALL 713-223-4567 BEFORE YOU DIG.



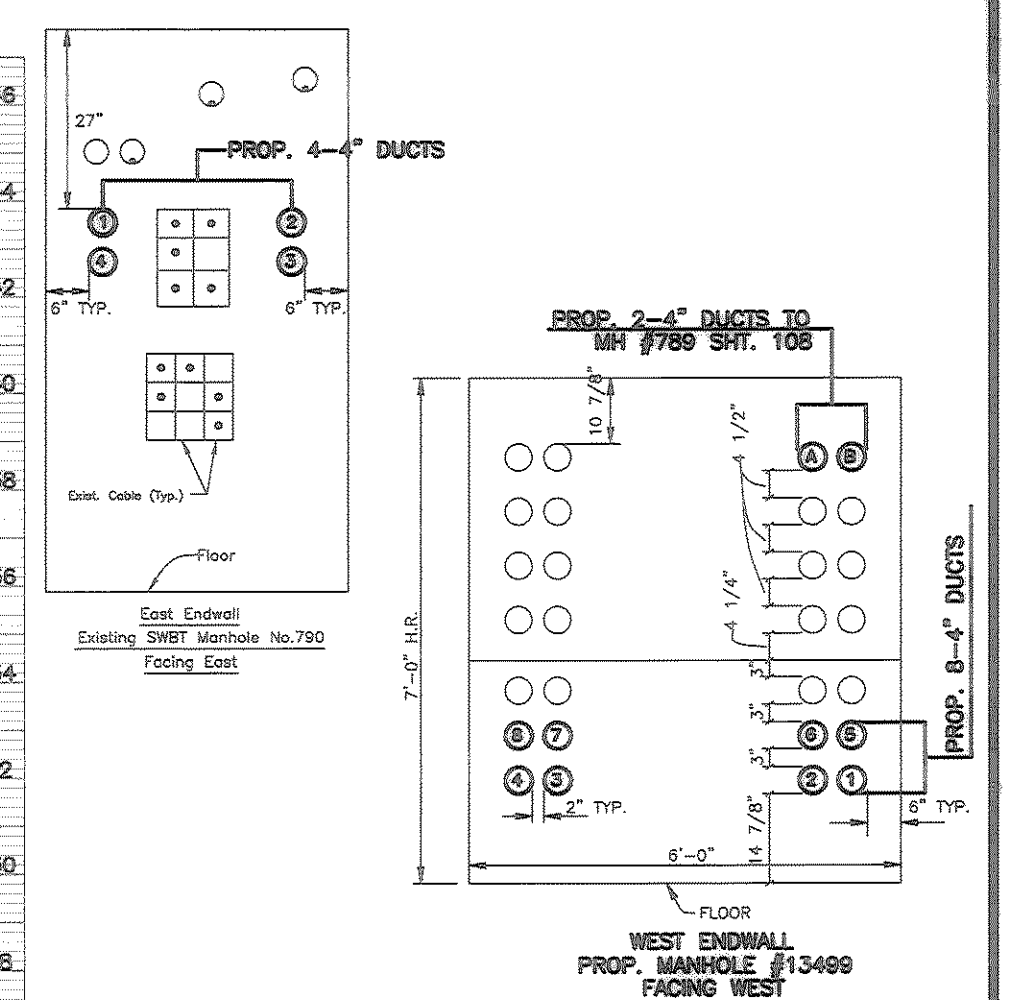
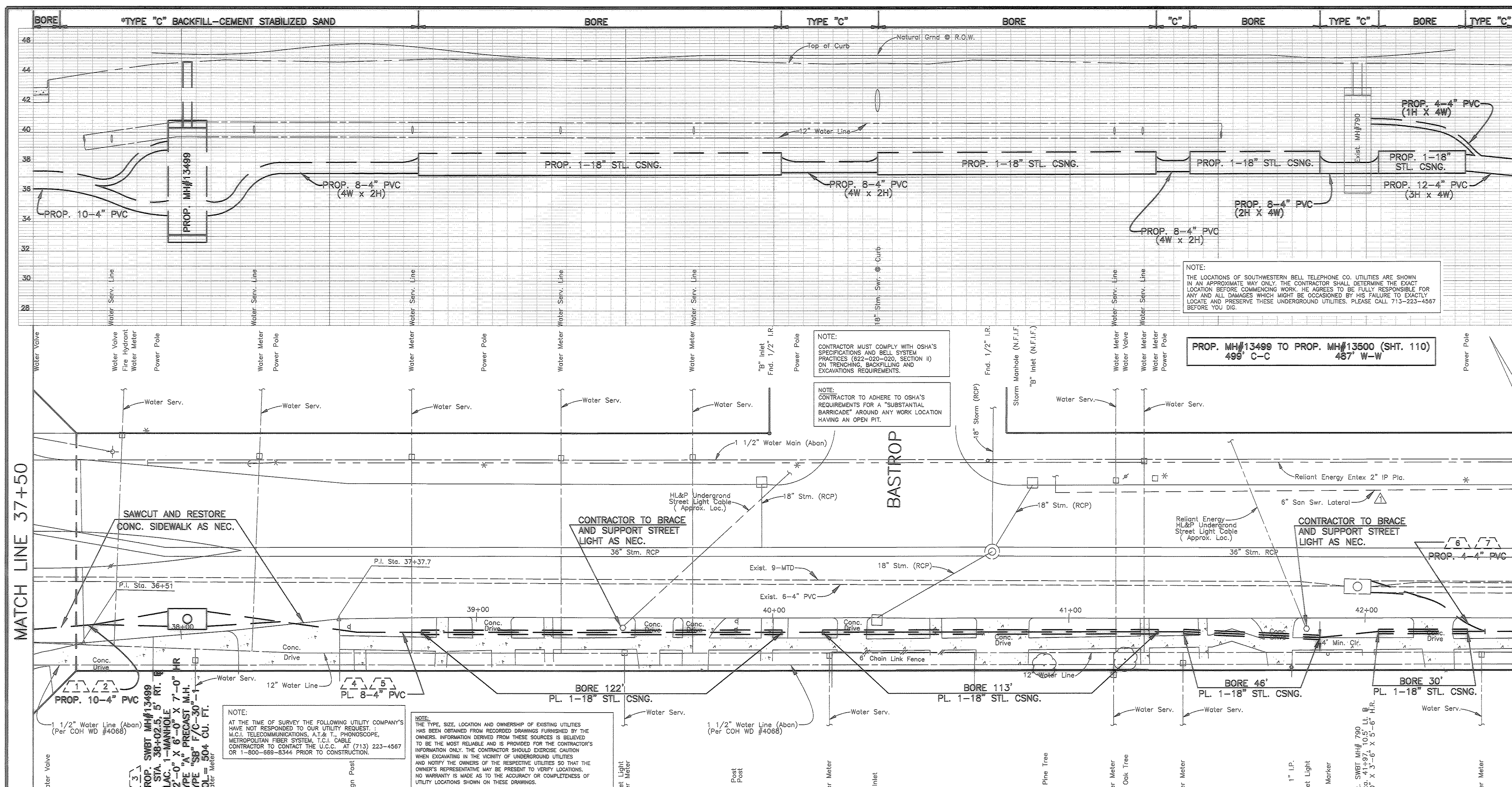
CITY OF HOUSTON
 DEPARTMENT OF PUBLIC WORKS AND ENGINEERING

REVIEWED BY
 PRIVATELY FUNDED PUBLIC WORKS CITY FUNDED PUBLIC WORKS
 H. Chang 6-12-00
 WATER PROJECT MANAGER
 WASTEWATER
 6-12-00
 CONSTRUCTION
 STORM WATER
 6-8-00
 STREET & BRIDGE CHIEF ENGINEER
 OTHER APPROVAL
 6/14/00
 TRAFFIC AND TRANSPORTATION SPONSOR DEPARTMENT

CITY ENGINEER DATE
 DIRECTOR OF PUBLIC WORKS AND ENGINEERING DATE
 SUBMITTED: SCALE: 1"=20' H, 1"=4' V DESIGNED BY: WEC
 DATE: 01/24/00 DRAWN BY: WEC
 SURVEY BY: CITY DWG NO:
 F B NO: 1850

Southwestern Bell Telephone
 WHEELER STREET
 HOUSTON, TEXAS

SCALE: PLAN 1" = 20' PROFILE HORIZ 1" = 20' PROFILE VERT 1" = 4'
 PREPARED BY CONDUIT DISTRICT MANAGER ENG.(DESIGN)
 DRAWN BY WEC
 ISSUE DATE 4/28/00
 PREPARED BY E. Eubanks MANAGER ENG.(DESIGN)
 JOHN Eubanks AREA MANAGER ENG.(DESIGN)
 PROJ. No. 4742529 REC REF SHEET
 AREA WK6522 c.o. Jackson 522 TAX DIST HG-031 108
 S0486 WEISSER ENGINEERING COMPANY



NOTE:
THE LOCATIONS OF SOUTHWESTERN BELL TELEPHONE CO. UTILITIES ARE SHOWN IN AN APPROXIMATE WAY ONLY. THE CONTRACTOR SHALL DETERMINE THE EXACT LOCATION BEFORE COMMENCING WORK. HE AGREES TO BE FULLY RESPONSIBLE FOR ANY AND ALL DAMAGES WHICH MIGHT BE OCCASIONED BY HIS FAILURE TO EXACTLY LOCATE AND PRESERVE THESE UNDERGROUND UTILITIES. PLEASE CALL 713-223-4567 BEFORE YOU DIG.

PROP. MH#13499 TO PROP. MH#13500 (SHT. 110)
499' C-C 457' W-W

NOTE:
CONTRACTOR MUST COMPLY WITH OSHA'S SPECIFICATIONS AND BELL SYSTEM PRACTICES (822-020-020, SECTION II) ON TRENCHING, BACKFILLING AND EXCAVATIONS REQUIREMENTS.

NOTE:
CONTRACTOR TO ADHERE TO OSHA'S REQUIREMENTS FOR A "SUBSTANTIAL BARRICADE" AROUND ANY WORK LOCATION HAVING AN OPEN PIT.

MATCH LINE 37+50

MATCH LINE 42+50

ADDED 6" SAN LATERAL PER CITY COMMENTS	EF	06/05/00
REV.	DESCRIPTION	BY DATE
CITY OF HOUSTON DEPARTMENT OF PUBLIC WORKS AND ENGINEERING		
REVIEWED BY		
PRIVATELY FUNDED PUBLIC WORKS	CITY FUNDED PUBLIC WORKS	
WATER <i>H. Chamy 6-12-00</i> PROJECT MANAGER		
WASTEWATER <i>R. Luf 6-26-00</i> CONSTRUCTION		
STORM WATER <i>W. J. 6-8-00</i> CHIEF ENGINEER		
STREET & BRIDGE <i>6/9/00</i> OTHER APPROVAL		
TRAFFIC AND TRANSPORTATION <i>Steve Baig</i> SPONSOR DEPARTMENT		
CITY ENGINEER	DATE	
<i>Walt L...</i>	7-7-2002	
SUBMITTED:		
SCALE: 1"=20'H, 1"=4'V	DESIGNED BY: WEC	
DATE: 01/24/00	DRAWN BY: WEC	
SURVEY BY:	DATE	
F B NO:1850	7-7-2002	
CITY DWG NO:		

OPER.	ACTION CODE	MAJOR MATERIAL DESCRIPTION	ACCT. CODE	ML OR AMT.	PL	BORE	REMOVALS
							AMOUNT MORT. DATE
1	PLAC	TRENCH-10-MPC	4C	56'			
2	PLAC	PVC-C-4",10	4C		560'		
3	PLAC	MANHOLE	4C		1		
4	PLAC	TRENCH-8-MPC	4C	433'			
5	PLAC	PVC-C-4",8	4C		3464'	311'	
6	PLAC	TRENCH-4-MPC	4C	42'			
7	PLAC	PVC-C-4",4	4C		168'		

RANGE OF OPERATIONS

PLACE	1	TO	5
SPLICE	-	TO	-

MAJORITY FRC. - 4C

NOTE:
CONTRACTOR TO TAKE NECESSARY PRECAUTIONS TO INSURE INTEGRITY OF EXISTING PAVEMENT DURING CONSTRUCTION. (USE SOLID WOOD SHORING AS REQUIRED).

CAUTION UNDERGROUND GAS FACILITIES

LOCATIONS OF RELIANT ENERGY ENTEX MAIN LINES (TO INCLUDE UNIT GAS TRANSMISSION AND/OR INDUSTRIAL GAS SUPPLY CORPORATION WHERE APPLICABLE) ARE SHOWN IN AN APPROXIMATE LOCATION ONLY. SERVICE LINES ARE USUALLY NOT SHOWN. THE CONTRACTOR SHALL CONTACT THE UTILITY COORDINATING COMMITTEE AT (713) 223-4567 OR 1-800-669-8344 A MINIMUM OF 48 HOURS PRIOR TO CONSTRUCTION TO HAVE MAIN AND SERVICE LINES FIELD LOCATED.

* WHEN RELIANT ENERGY ENTEX PIPE LINE MARKINGS ARE NOT VISIBLE, CALL (713) 967-8037 (7:00 A.M. TO 4:30 P.M.) FOR STATUS OF LINE LOCATION REQUEST BEFORE EXCAVATION BEGINS.

* WHEN EXCAVATING WITHIN EIGHTEEN INCHES (18") OF THE INDICATED LOCATION OF RELIANT ENERGY ENTEX FACILITIES, ALL EXCAVATION MUST BE ACCOMPLISHED USING NONMECHANIZED EXCAVATION PROCEDURES.

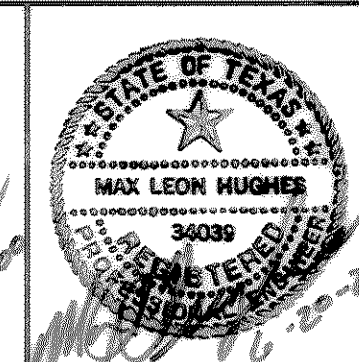
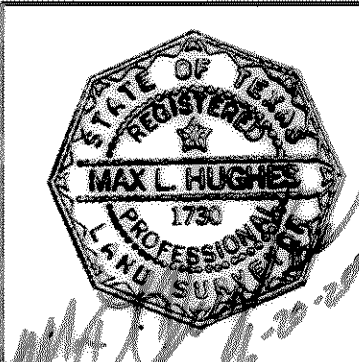
* WHEN RELIANT ENERGY ENTEX FACILITIES ARE EXPOSED, SUFFICIENT SUPPORT MUST BE PROVIDED TO THE FACILITIES TO PREVENT EXCESSIVE STRESS ON THE PIPING.

THE CONTRACTOR IS FULLY RESPONSIBLE FOR ANY DAMAGES CAUSED BY HIS FAILURE TO EXACTLY LOCATE AND PRESERVE THESE UNDERGROUND FACILITIES.

WARNING

OVERHEAD LINES MAY EXIST ON THE PROPERTY. WE HAVE NOT ATTEMPTED TO MARK THOSE LINES SINCE THEY ARE CLEARLY VISIBLE, BUT YOU SHOULD LOCATE THEM PRIOR TO BEGINNING ANY CONSTRUCTION. TEXAS LAW, SECTION 752, HEALTH & SAFETY CODE, FORBIDS ALL ACTIVITIES IN WHICH PERSONS OR THINGS MAY COME WITHIN SIX (6) FEET OF LIVE OVERHEAD HIGH VOLTAGE LINES. PARTIES RESPONSIBLE FOR THE WORK, INCLUDE CONTRACTORS, ARE LEGALLY RESPONSIBLE FOR SAFETY OF CONSTRUCTION WORKERS UNDER THIS LAW. THIS LAW CARRIES BOTH CRIMINAL AND CIVIL LIABILITY. TO ARRANGE FOR LINES TO BE TURNED OFF OR MOVED CALL HL&P AT (713) 207-7777.

WEISSER Engineering Co.
19500 Park Row, Suite 100
Houston, Texas 77064
(281) 579-7300



Southwestern Bell Telephone

WHEELER STREET
HOUSTON, TEXAS

SCALE: PLAN 1" = 20' PROFILE HORIZ 1" = 20' PROFILE VERT 1" = 4'

PREPARED BY CONDUIT DISTRICT	DRAWN BY WEC	ISSUE DATE 5/8/00
PREPARED BY <i>E. J. Eubanks</i> MANAGER ENG.(DESIGN)	DRAWN BY <i>John T. Brown</i> AREA MANAGER ENG.(DESIGN)	
PROJ. No. 4742529	REC REF	SHEET 109
AREA No. WK6522	c.o. JACKSON 527	TAX DIST HG-031
S0486 WEISSER ENGINEERING COMPANY		