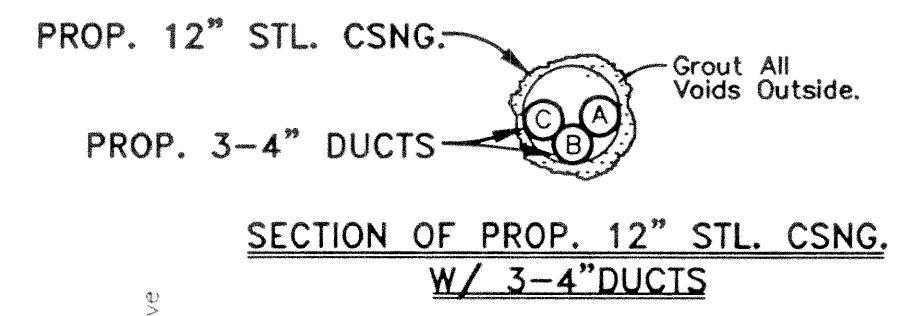
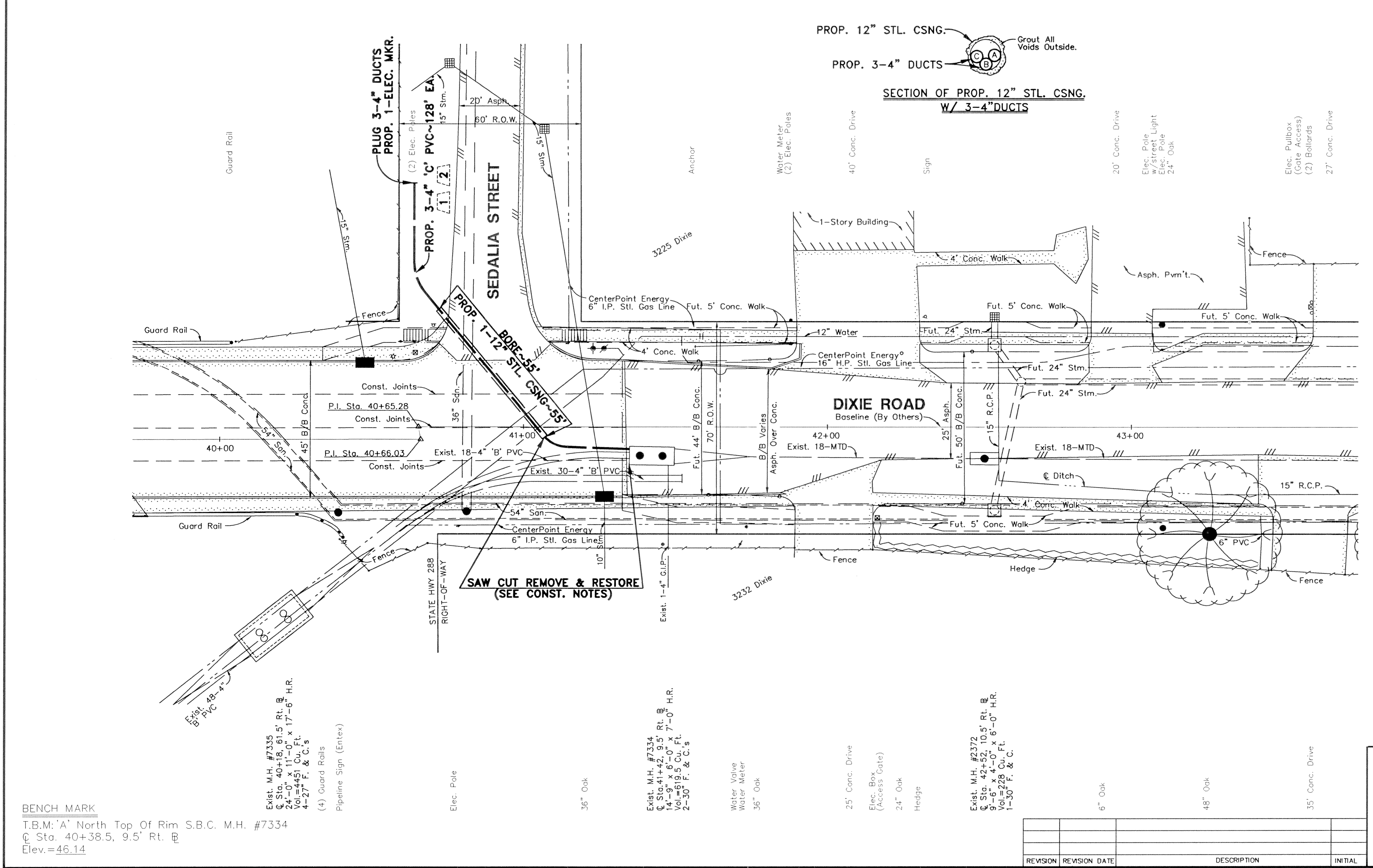
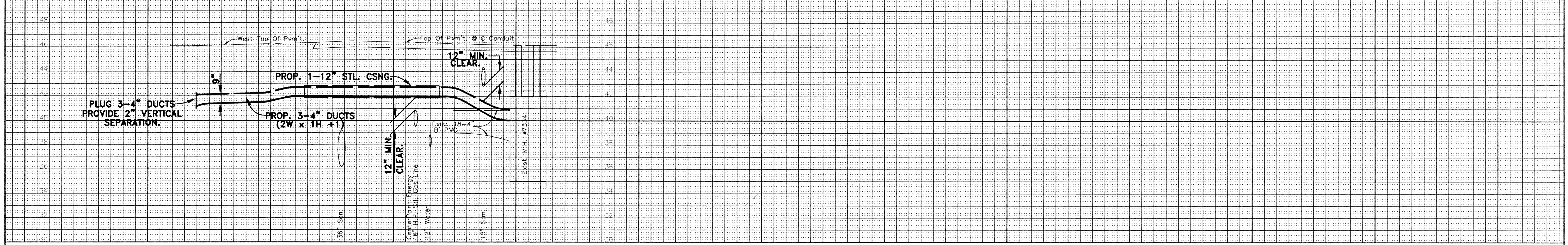
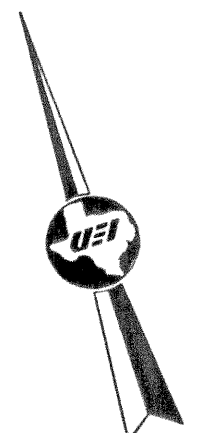


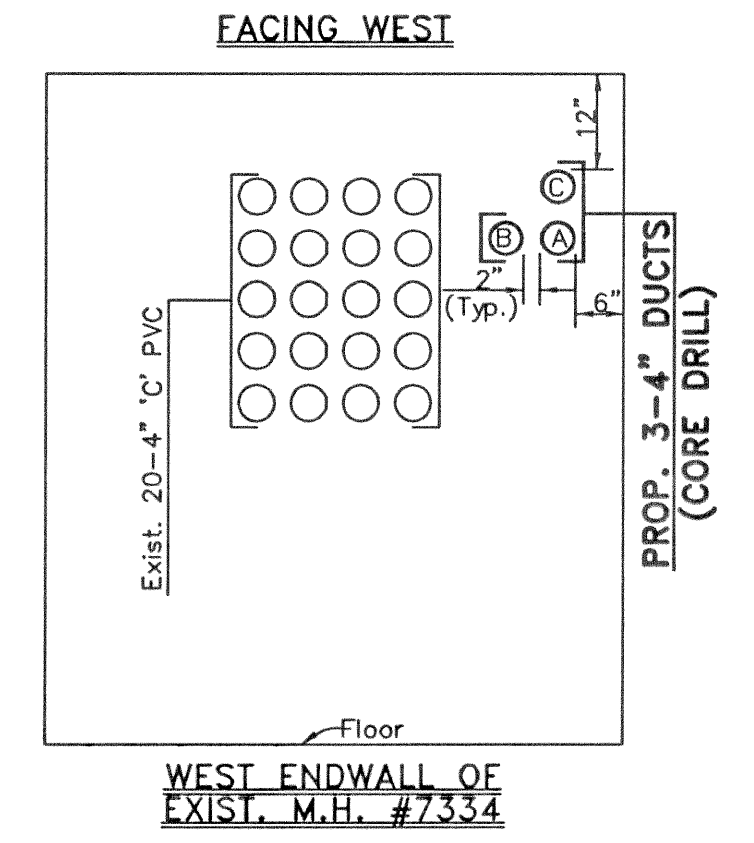
TYP. 'A' BKFL~COMP. BORE TYPE 'C'



SEE CONSTRUCTION NOTES & DETAILS ON B, C & D SHEETS



Key Map #533-F
GIMS Map #5355D



MFR 4C
PLAC 1 TO 2
OPER. RANGE

OPER	ACTION CODE	MAJOR MATERIAL DESCRIPTION	ACCT. CODE	ML OR AMT.	PL	BORE	REMOVALS	
							AMOUNT	MORT. DATE
1	PLAC	TRENCH-3-MPC	4C	128'		55'		
2	PLAC	PVC-C-4",3				384'		

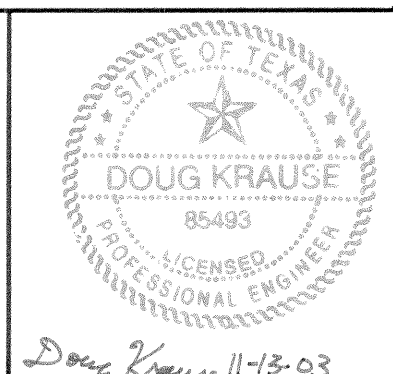
BENCH MARK
T.B.M. 'A' North Top Of Rim S.B.C. M.H. #7334
Sta. 40+38.5, 9.5' Rt. B
Elev. = 46.14

Exist. M.H. #7335
Sta. 40+18, 61.5' Rt. B
24'-0" x 11'-0" x 17'-6" H.R.
Vol. = 4451 Cu. Ft.
4-27' F. & C. S.

Exist. M.H. #7334
Sta. 41+42, 9.5' Rt. B
14'-9" x 6'-0" x 7'-0" H.R.
Vol. = 2229 Cu. Ft.
1-30' F. & C. S.

Exist. M.H. #2372
Sta. 42+52, 10.5' Rt. B
9'-6" x 4'-0" x 6'-0" H.R.
Vol. = 2229 Cu. Ft.
1-30' F. & C. S.

REVISION	REVISION DATE	DESCRIPTION	INITIAL



DIXIE ROAD @ SEDALIA STREET
HOUSTON, TEXAS

WATER	WASTEWATER	TRAFFIC
ST. & BRIDGE	STORMWATER	SWQ

SCALE: PLAN 1"= 20' PROFILE VERT. 1"= 4' PROFILE HORZ. 1"= 20'

C.P. #603-049

PREPARED BY: *John A. Miller* (M.S.R.-ENG. DESIGN) *John E. Egan* (AREA MGR.-ENG. DESIGN)

PREPARED BY CONDUIT DISTRICT: *John Court* (M.S.R.-ENG. DESIGN) DRAWN BY: U.E.I. ISSUE DATE: 12-03-07

PROJECT NO. 5147910 REC REF 747-369 SHEET 101

AREA NO. WK-7747 c.o. RIVERSIDE '747' TAX DIST. HG-031

United Engineers, Inc. JOB NO. 22048-00

RIV-G-6A