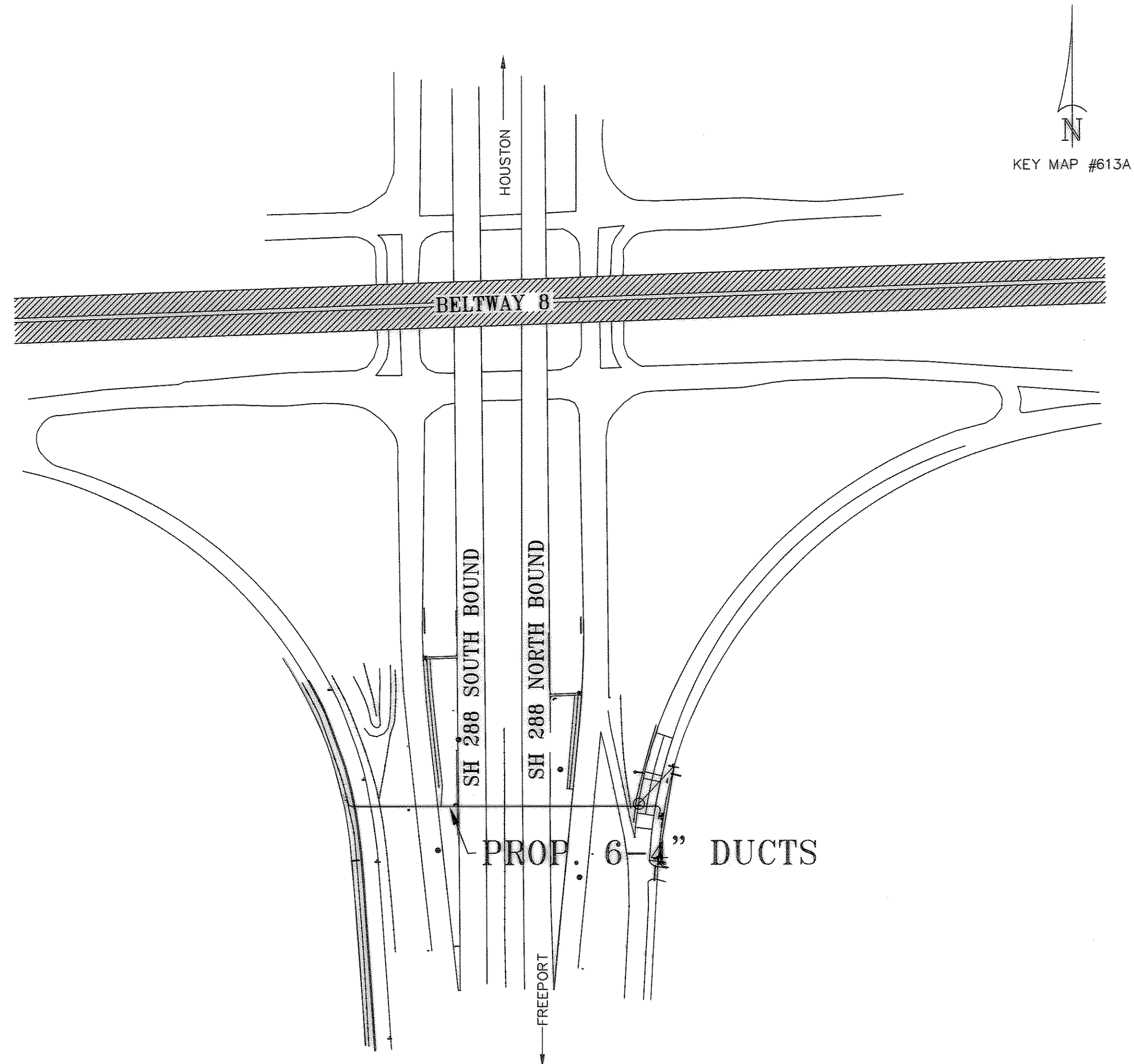
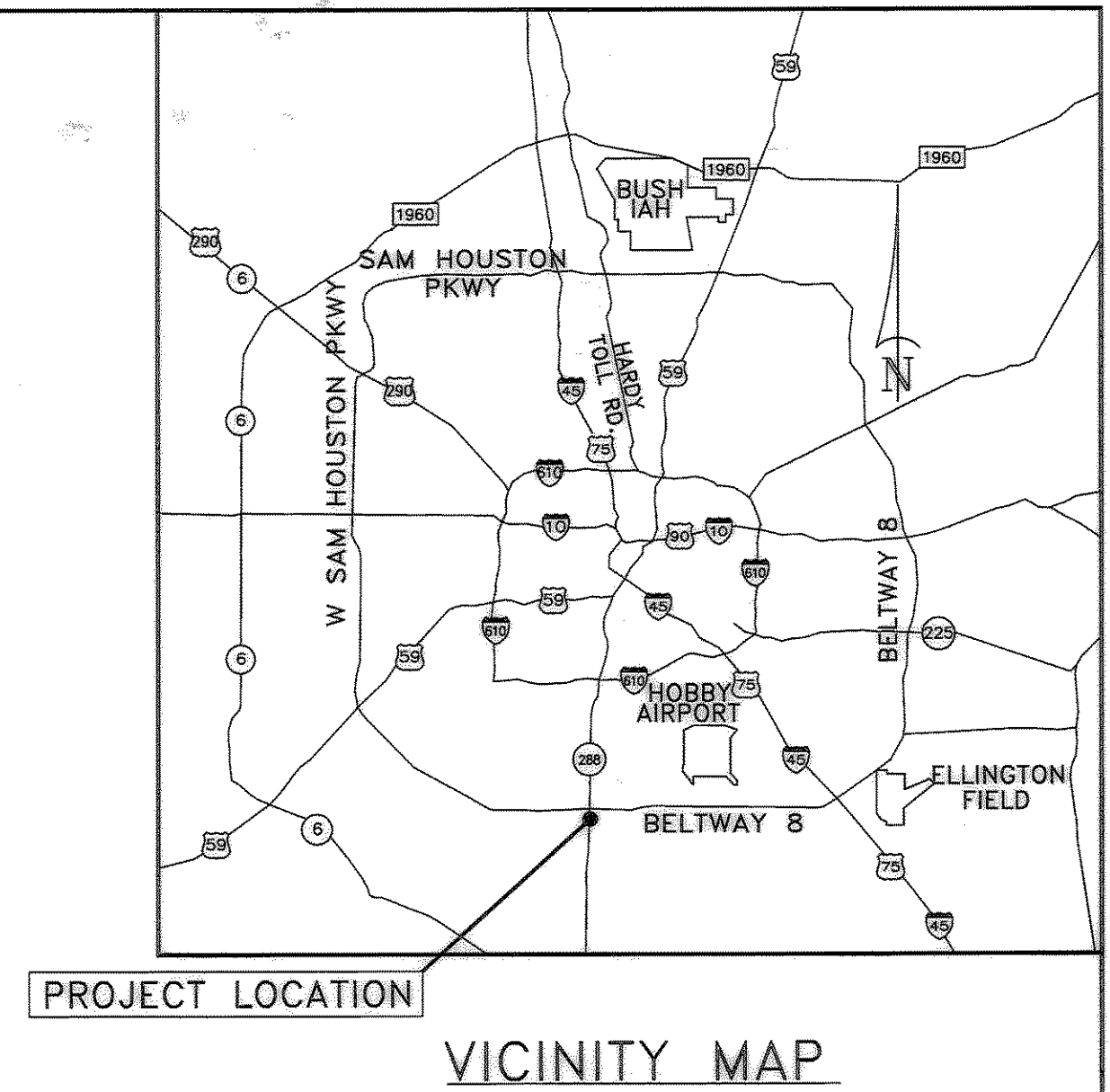




SHEET INDEX

- A COVER SHEET
- B GENERAL DETAILS & SPECIFICATIONS
- C GENERAL DETAILS & SPECIFICATIONS
- D TRAFFIC CONTROL PLAN
- F TYPICAL SWPP PLAN
- 101 PLAN & PROFILE SHEET
- 102 PLAN & PROFILE SHEET

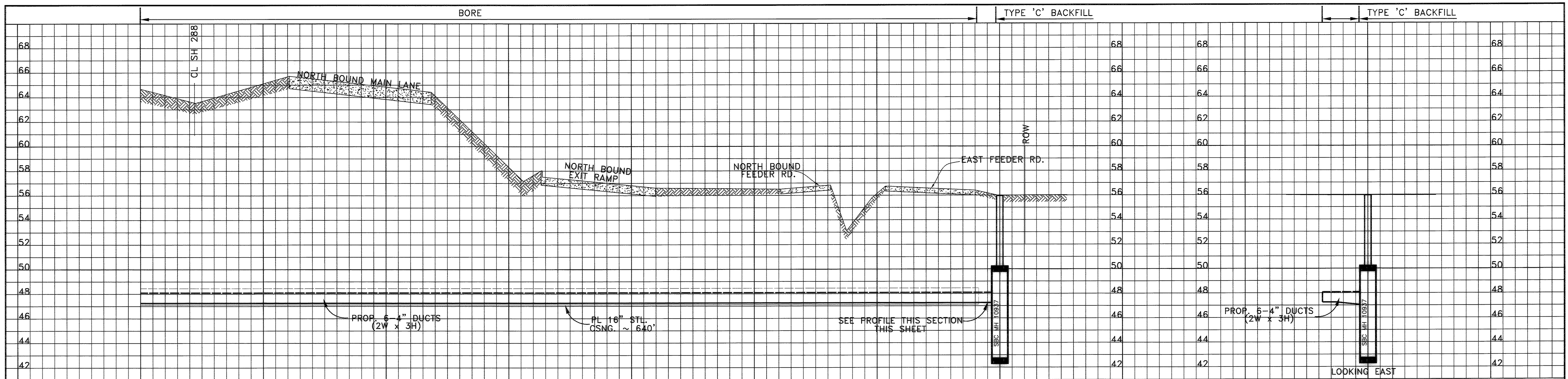
IDLEWOOD '433' WK4433
 PROP. 6-4" PVC DUCTS CROSSING SH 288
 HARRIS COUNTY, TEXAS



AREA DETERMINED TO BE IN/OUT THE
 500-YEAR FLOODPLAIN (ZONE-X) BASED
 ON F.I.R.M. 48201C1010K, PANEL 1010
 OF 1135 PANELS (REV. APRIL 20, 2000)

						CP# 704-024	
						PROJECT NO. 5334175	A
REVISION	REVISION DATE	DESCRIPTION	MS INITIAL	AREA NO. WK4433	DATE ISSUED 01/07/05	NUMBER OF SHEETS 7	

PROP. 6-4" PVC DUCTS CROSSING SH 288

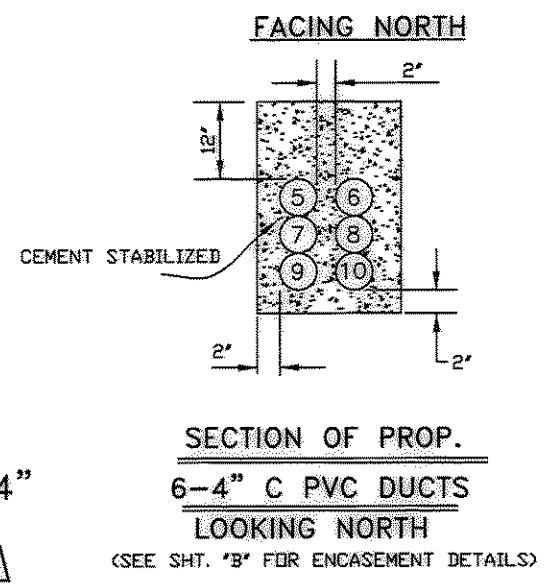
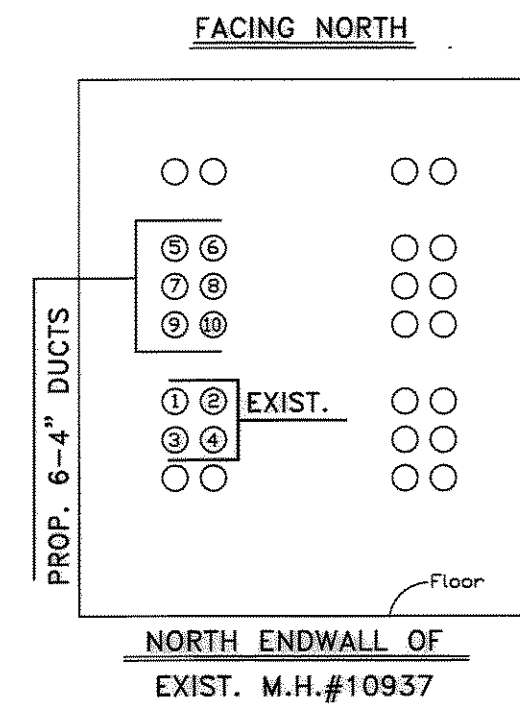
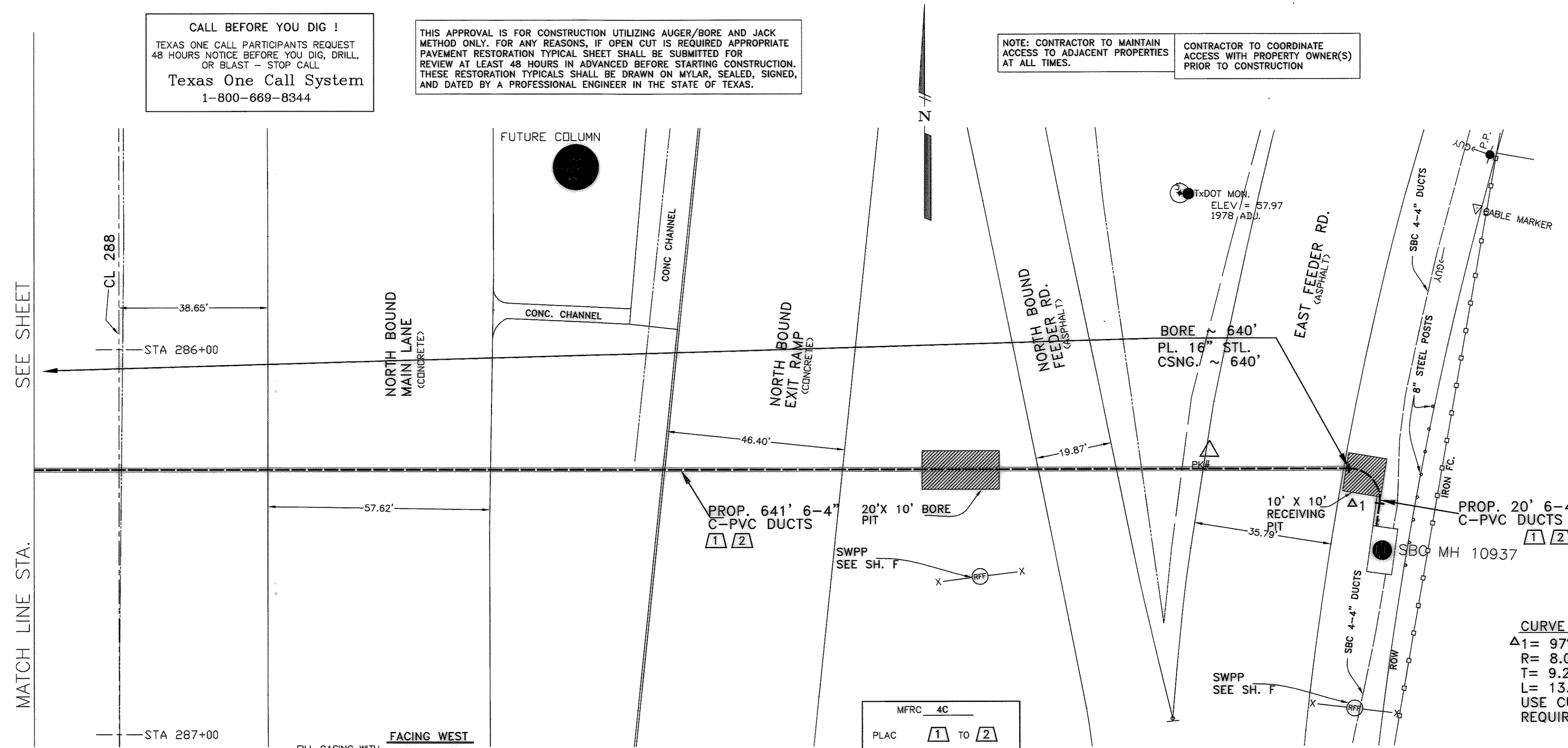


CALL BEFORE YOU DIG !
 TEXAS ONE CALL PARTICIPANTS REQUEST
 48 HOURS NOTICE BEFORE YOU DIG, DRILL,
 OR BLAST - STOP CALL
Texas One Call System
 1-800-669-8344

THIS APPROVAL IS FOR CONSTRUCTION UTILIZING AUGER/BORE AND JACK
 METHOD ONLY. FOR ANY REASONS, IF OPEN CUT IS REQUIRED APPROPRIATE
 PAVEMENT RESTORATION TYPICAL SHEET SHALL BE SUBMITTED FOR
 REVIEW AT LEAST 48 HOURS IN ADVANCED BEFORE STARTING CONSTRUCTION.
 THESE RESTORATION TYPICALS SHALL BE DRAWN ON MYLAR, SEALED, SIGNED,
 AND DATED BY A PROFESSIONAL ENGINEER IN THE STATE OF TEXAS.

NOTE: CONTRACTOR TO MAINTAIN
 ACCESS TO ADJACENT PROPERTIES
 AT ALL TIMES.

CONTRACTOR TO COORDINATE
 ACCESS WITH PROPERTY OWNER(S)
 PRIOR TO CONSTRUCTION



NOTE
 THE CONTRACTOR SHALL KEEP ALL ROADWAYS FREE
 AND CLEAR OF ALL CONSTRUCTION EQUIPMENT, SUPPLIES
 AND VEHICLES AT ALL TIMES.

CURVE DATA
 $\Delta 1 = 97^\circ 52'$
 $R = 8.0'$
 $T = 9.2'$
 $L = 13.7'$
 USE CURVE SEGMENTS AS
 REQUIRED; CONC. ENCASE

BENCH MARK:
 TxDOT BRASS DISK SET IN THE EAST SIDE OF 5' DIA. CONCRETE
 LIGHT STANDARD BASS, LOCATED AT TxDOT STATION 285+60
 275.5' LEFT.
 Elev. = 57.97' (1978 Adj.)

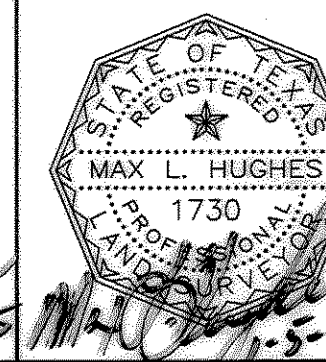
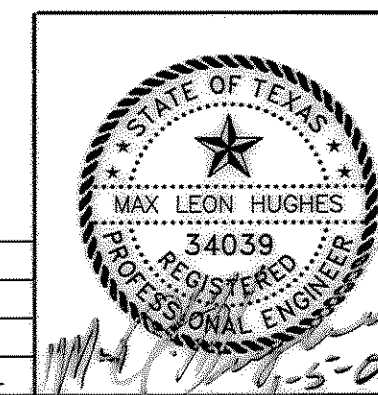
NOTE:
 DUCT ASSIGNMENT CHANGES
 REQUIRE APPROVAL FROM SBC
 INSPECTOR

**PROP. 16\"/>
 6-4\"/>
 N.T.S.**

OPER	ACTION CODE	MAJOR MATERIAL DESCRIPTION	ACCT. CODE	ML OR AMT.	PL	BORE	REMOVALS
							AMOUNT MORT DATE
1	PLAC	TRENCH-6-MPC	4C	661'		641'	
2	PLAC	PVC-C-4", 6	4C	3966'			

MFRC 4C
 PLAC 1 TO 2
 OPER. RANGE

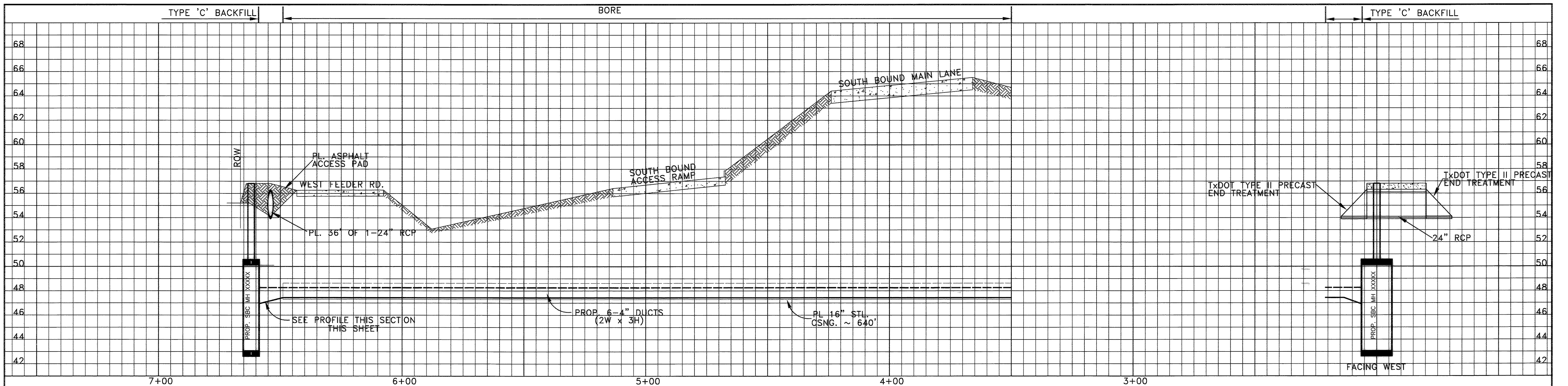
REVISION	REVISION DATE	INITIAL



SBC			
6-4" PVC DUCTS CROSSING SH 288			
HARRIS COUNTY, TEXAS			
SCALE: PLAN 1"= 20'		PROFILE VERT. 1"= 4'	
PROFILE HORIZ. 1"= 20'		C.P.# 704-024	
PREPARED BY <i>M. J. Lee</i>			
PREPARED BY CONDUIT DISTRICT <i>M. J. Lee</i>		DRAWN BY <i>MLH</i>	
PROJECT NO. 5334175		REC REF N/A	
AREA NO. WK 4433		c.o. IDLEWOOD "433" TAX DIST. HGO29	
SHEET NO. 101			ISSUE DATE 01/20/08

Suburban Engineering & Surveying, Inc.
 22415 Kent Falls Drive
 Katy, TX 77705
 (281) 395-9277
 (832) 967-9348 Cell
 E-mail: maxhughes385@aol.com

PROP. 6-4" PVC DUCTS CROSSING SH 288



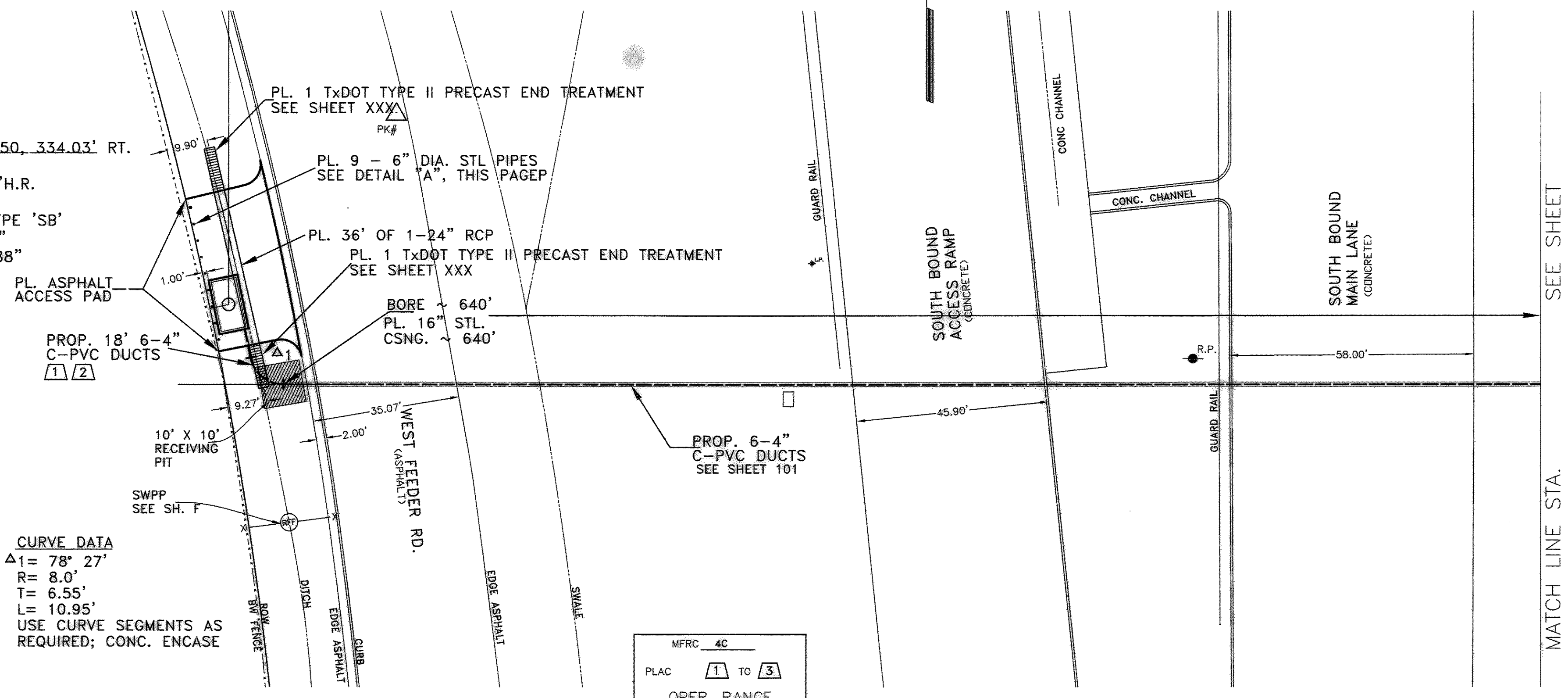
CALL BEFORE YOU DIG !
 TEXAS ONE CALL PARTICIPANTS REQUEST
 48 HOURS NOTICE BEFORE YOU DIG, DRILL,
 OR BLAST - STOP CALL
Texas One Call System
 1-800-669-8344

THIS APPROVAL IS FOR CONSTRUCTION UTILIZING AUGER/BORE AND JACK
 METHOD ONLY. FOR ANY REASONS, IF OPEN CUT IS REQUIRED APPROPRIATE
 PAVEMENT RESTORATION TYPICAL SHEET SHALL BE SUBMITTED FOR
 REVIEW AT LEAST 48 HOURS IN ADVANCED BEFORE STARTING CONSTRUCTION.
 THESE RESTORATION TYPICALS SHALL BE DRAWN ON MYLAR, SEALED, SIGNED,
 AND DATED BY A PROFESSIONAL ENGINEER IN THE STATE OF TEXAS.

NOTE: CONTRACTOR TO MAINTAIN
 ACCESS TO ADJACENT PROPERTIES
 AT ALL TIMES.

CONTRACTOR TO COORDINATE
 ACCESS WITH PROPERTY OWNER(S)
 PRIOR TO CONSTRUCTION

3
 PROP. M.H.#XXXXX
 TxDOT STA 286+12.50, 334.03' RT.
 TYPE 'A' PRECAST
 12'-0"x6'-0"x7'-0"H.R.
 VOL.= 504 CU. FT.
 PL. 1-30" F./C. TYPE 'SB'
 LAT.= N29°35'01.37"
 LONG.= W95°21'13.88"

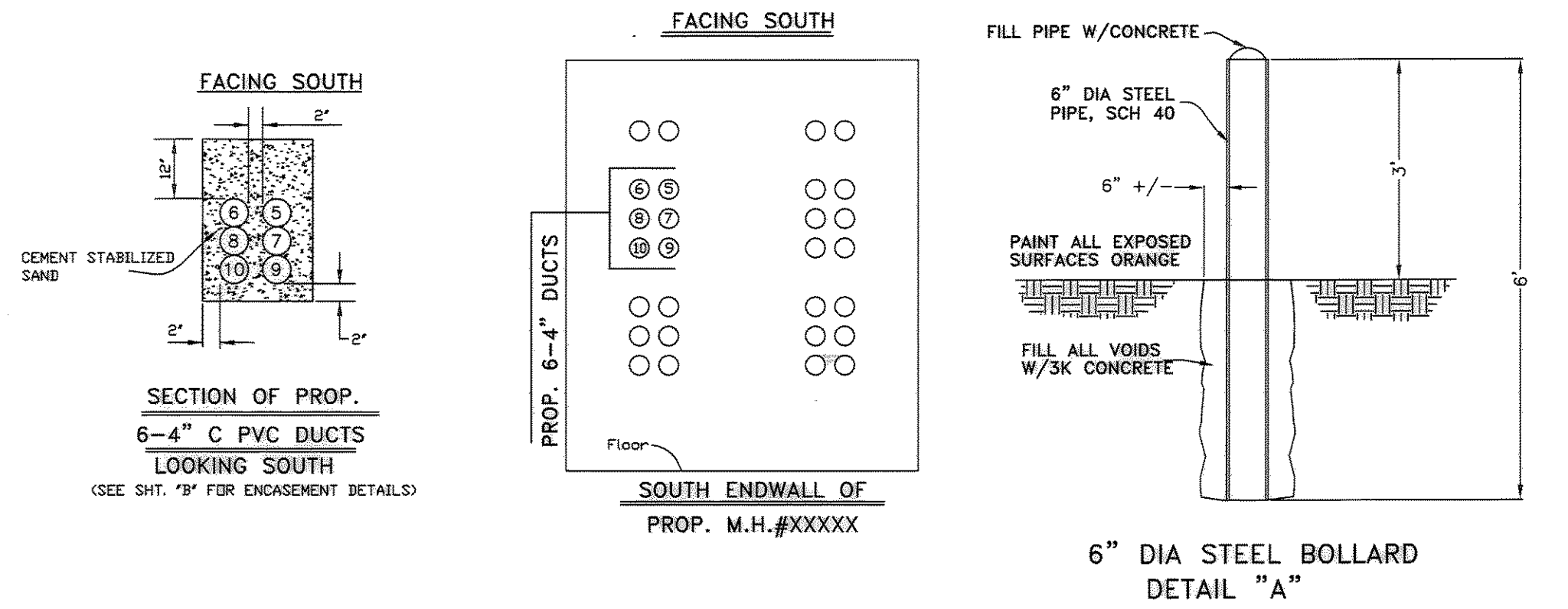


CURVE DATA
 $\Delta 1 = 78^\circ 27'$
 $R = 8.0'$
 $T = 6.55'$
 $L = 10.95'$
 USE CURVE SEGMENTS AS
 REQUIRED; CONC. ENCASE

BENCH MARK:
 TxDOT BRASS DISK SET IN THE EAST SIDE OF 5' DIA. CONCRETE
 LIGHT STANDARD BASS, LOCATED AT TxDOT STATION 285+60
 275.5' LEFT.
 Elev. = 57.97 (1978 Adj.)

NOTE:
 DUCT ASSIGNMENT CHANGES
 REQUIRE APPROVAL FROM SBC
 INSPECTOR

OPER	ACTION	MAJOR MATERIAL DESCRIPTION	ACCT. CODE	ML OR AMT.	PL	BORE	REMOVALS
							AMOUNT
1	PLAC	TRENCH-6-MPC	4C	18'			
2	PLAC	PVC-C-4", 6	4C		108'		
3	PLAC	MANHOLE 12'X6'X7'	4C	1			



NOTE
 THE CONTRACTOR SHALL KEEP ALL ROADWAYS FREE
 AND CLEAR OF ALL CONSTRUCTION EQUIPMENT, SUPPLIES
 AND VEHICLES AT ALL TIMES.

SBC

6-4" PVC DUCTS CROSSING SH 288
HARRIS COUNTY, TEXAS

PLAN 1"= PROFILE VERT. 1"= 4" PROFILE HORIZ. 1"= 20'

CP# 704-024

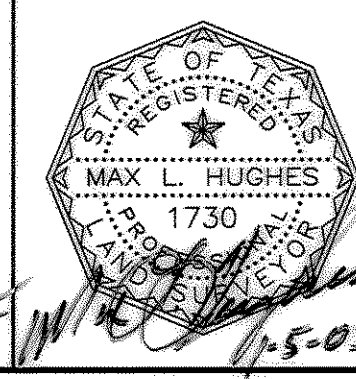
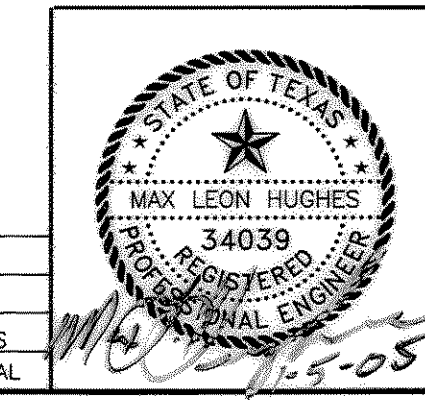
PREPARED BY: *M. Juel*

PREPARED BY CONDUIT DISTRICT: *M. Juel* DRAWN: *A. J. Juel* ISSUE DATE: **01/09/05**

PROJECT NO. 5334175 REC REF N/A

AREA NO. WK4433 C.DLEWOOD_ "433" TAX DIST. HGO29

102



REVISION	REVISION DATE	MS INITIAL
04-24-2003		

PROP. 6-4" PVC DUCTS CROSSING SH 288