

MANHOLES

RE	IN	INSIDE DIM	MIN. OPENING	SHAPE	RECESS AT DUCTS	TOTAL DEPTH OF EXCAVATION	WALLS	ROOF	REAR	OUTER COVER	WT	WT	DRIN	DATE	REMARKS
#	N	LVY	HD.	TH						SHAPE	WT	INSIDE OF COVER	FRAME		
782		See Fannin													
783		8'x5'6"x5'9"	24"	RECT.	6"	7'-9"	6"C	6"C	6"C	R				7-27	EST. 28
784		8'x5'7"x5'5"	24"	RECT.	6"	8'-9"	6"C	6"C	6"C	R				7-27	EST. 28
785		8'x5'7"x5'6"	24"	RECT.	6"	8'-5"	6"C	6"C	6"C	R				7-27	EST. 28
786		8'x3'7"x5'5"	24"	RECT.	6"	8'	6"C	6"C	6"C	R				7-27	EST. 28
787		8'x3'7"x5'7"	24"	RECT.	6"	8'	6"C	6"C	6"C	R				7-27	EST. 28
330		See Fannin													
1599		8'x3'6"x5'6"	30"	Red		8'-6"				R				5-46	Est. 5172

MANHOLES

M/H IDENT	INSIDE DIMENSIONS	VOL CU FT	TYPE	PRCST	COLLAR & COVER	YEAR PLACED	ORDER NO	TAX DIST	REMARKS
	LENGTH	WIDTH	HEADROOM						
783	8'-0"	3'-6"	5'-1"		1-24"	1981	28	H6-031	
784	8'-0"	3'-7"	5'-5"		1-24"	1981	28	H6-031	
785	8'-0"	3'-7"	5'-6"		1-24"	1981	28	H6-031	
786	8'-0"	3'-7"	5'-5"		1-24"	1981	28	H6-031	
787	8'-0"	3'-7"	5'-1"		1-24"	1981	28	H6-031	

CONDUIT

FROM TO	ORIGINAL PAVEMENT	CONDUIT	DATE	REMARKS		
M.H. INCL. M.H.	SURFACE	BASE	LENGTH	TYPE	LENGTH	
782-783	EARTH	50'	7-27	EST. 28		
783-784	EARTH	438'	7-27	EST. 28		
784-785	EARTH	22'	7-27	EST. 28		
785-786	EARTH	506'	7-27	EST. 28		
786-787	EARTH	475'	7-27	EST. 28		

MAIN AND SUBSIDIARY CONDUIT

REF	LENGTH (FT)	NUMBER OF DUCTS	TYPE AND MATERIAL	SIZE (IN)	YEAR PLACED	ORDER NO	TAX DISTRICT	REMARKS
#1	4887	4	MTD	4"	1981	28	H6-031	
#2	4840	4	MTD	4"	1981	28	H6-031	
#3	5130	4	MTD	4"	1981	28	H6-031	
#4	4672	4	MTD	4"	1981	28	H6-031	
#5	2874	4	MTD	4"	1981	28	H6-031	

LATERALS

NO	ORIGINAL PAVEMENT	SUB SURFACE	DATE	REMARKS		
	SURFACE	BASE	LENGTH	TYPE	LENGTH	
1	Gravel	2'-0"	1980	EST 795		
2	"	2'-0"	1980	EST 795		
3	"	2'-0"	1980	EST 795		

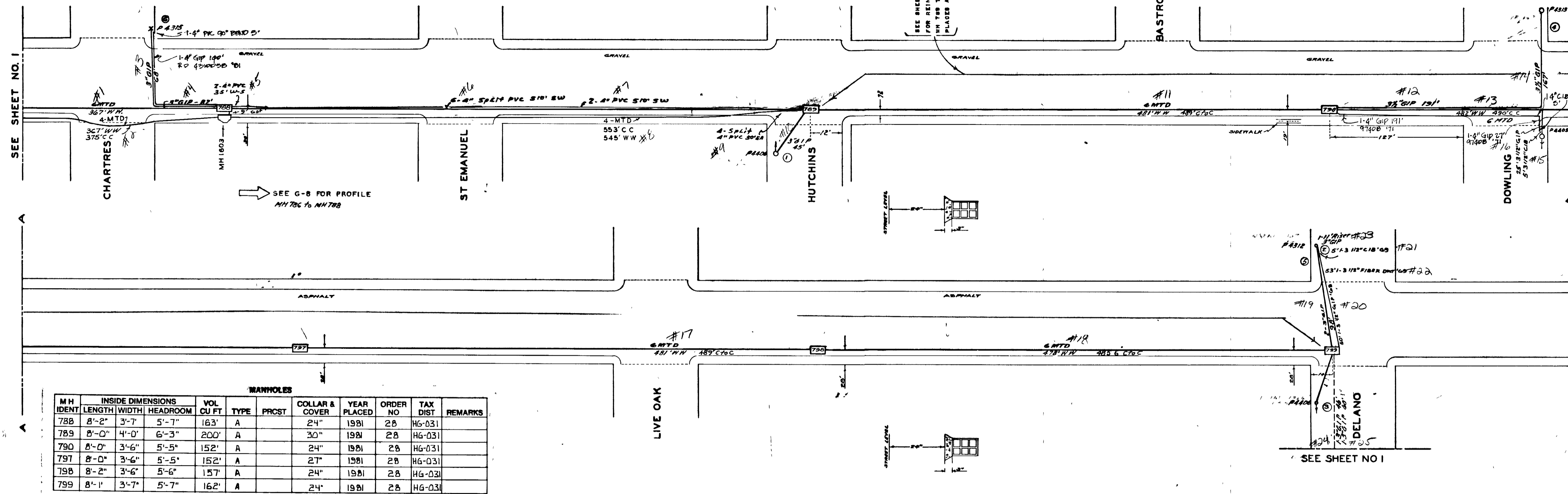
NOTE - SEE G-8 FOR PROFILE ON 4-MTD

Jackson  
WHEELER

1

DRAWN BY  
POSTED BY  
12/1/81  
57889 1973

HG-31



SEE G-8 FOR PROFILE  
MH 786 TO MH 788

SEE SHEET NO 1

M H IDENT	INSIDE LENGTH	INSIDE WIDTH	HEADROOM	VOL CU FT	TYPE	PRCST	COLLAR & COVER	YEAR PLACED	ORDER NO	TAX DIST	REMARKS
788	8'-2"	3'-7"	5'-7"	163'	A		24"	1981	28	HG-031	
789	8'-0"	4'-0"	6'-3"	200'	A		30"	1981	28	HG-031	
790	8'-0"	3'-6"	5'-5"	152'	A		24"	1981	28	HG-031	
797	8'-0"	3'-6"	5'-5"	152'	A		27"	1981	28	HG-031	
798	8'-2"	3'-6"	5'-6"	157'	A		24"	1981	28	HG-031	
799	8'-1"	3'-7"	5'-7"	162'	A		24"	1981	28	HG-031	

REF	LENGTH (FT)	NUMBER OF DUCTS	TYPE AND MATERIAL	SIZE (IN)	YEAR PLACED	ORDER NO	TAX DISTRICT	REMARKS
#1	2202	6	MTD	3 1/2	1981	28	HG-031	
#2	1468	4	MTD	3 1/2	1981	28	HG-031	
#3	68	1	GIP	3	1981	28	HG-031	
#4	82	1	GIP	3	1981	28	HG-031	
#5	70	2	PVC	4	1981	28	HG-031	
#6	3060	6	PVC	4	1981	28	HG-031	
#7	1020	2	PVC	4	1981	28	HG-031	
#8	2180	4	MTD	3 1/2	1981	28	HG-031	

M H	INSIDE DIM	MIN DIM	SHAPE	RECESS AT DUCTS	TOTAL DEPTH OF EXCAVATION	WALLS	ROOF	FLOOR	ENTER COVER	WT OF COVER	WT OF FRAME	BRICK	DATE	REMARKS
788	8'2"x3'7"x5'7"	24"	RECT	6"	8'9"	6"C	6"C	6"C	R				7-27	EST 28
789	8'0"x4'0"x6'3"	30"	RECT	6"	8'6"	6"C	6"C	6"C	R				7-27	EST 28
790	8'0"x3'6"x5'5"	24"	RECT	6"	8'8"	6"C	6"C	6"C	R				7-27	EST 28
797	8'0"x3'6"x5'5"	27"	RECT	6"	8'1"	6"C	6"C	6"C	R				7-27	EST 28
798	8'2"x3'6"x5'6"	24"	RECT	6"	7'7"	6"C	6"C	6"C	R				7-27	EST 28
799	8'1"x3'7"x5'7"	24"	RECT	6"	8'1"	6"C	6"C	6"C	R	TYPE L			7-27	EST 28

ACCOUNTING	CLASSIFICATION	EXCHANGE	REMARKS
788 789	G	EARTH	593'
789 790	G	EARTH	479'
790 797	A	EARTH	341' 138'
797 798	A	EARTH	479'
798 799	A	EARTH	476'
787 788	A	EARTH	305' 60'

NR	ORIGINAL PAVEMENT	SUB SURFACE	DATE	REMARKS
1	A	EARTH	15-23	7-27 EST 28
2	A	EARTH	28'	7-27 EST 28
3	A	EARTH	103'	7-27 EST 28
4	A	EARTH	42'	1930 EST 905
5	A	EARTH	25'	1930 EST 905
6	A	EARTH	34'	

REF	LENGTH (FT)	NUMBER OF DUCTS	TYPE AND MATERIAL	SIZE (IN)	YEAR PLACED	ORDER NO	TAX DISTRICT	REMARKS
#9	200	4	PVC	4	1981	28	HG-031	
#10	45	1	GIP	3	1981	28	HG-031	
#11	2886	6	MTD	3 1/2	1981	28	HG-031	
#12	191	1	GIP	3 1/2	1981	28	HG-031	
#13	2892	6	MTD	3 1/2	1981	28	HG-031	
#14	167	1	GIP	3 1/2	1981	28	HG-031	
#15	5	1	CIB	3 1/2	1981	28	HG-031	
#16	25	1	GIP	3 1/2	1981	28	HG-031	

REF	LENGTH (FT)	NUMBER OF DUCTS	TYPE AND MATERIAL	SIZE (IN)	YEAR PLACED	ORDER NO	TAX DISTRICT	REMARKS
#17	2886	6	MTD	3 1/2	1981	28	HG-031	
#18	2888	6	MTD	3 1/2	1981	28	HG-031	
#19	196	2	GIP	3	1981	28	HG-031	
#20	50	1	GIP	3 1/2	1981	28	HG-031	
#21	5	1	CIB	3 1/2	1981	28	HG-031	
#22	53	1	CIB	3 1/2	1981	28	HG-031	
#23	11	1	CIB	3 1/2	1981	28	HG-031	
#24	46	1	GIP	3	1981	28	HG-031	
#25	60	1	GIP	3	1981	2361	HG-031	

Jackson

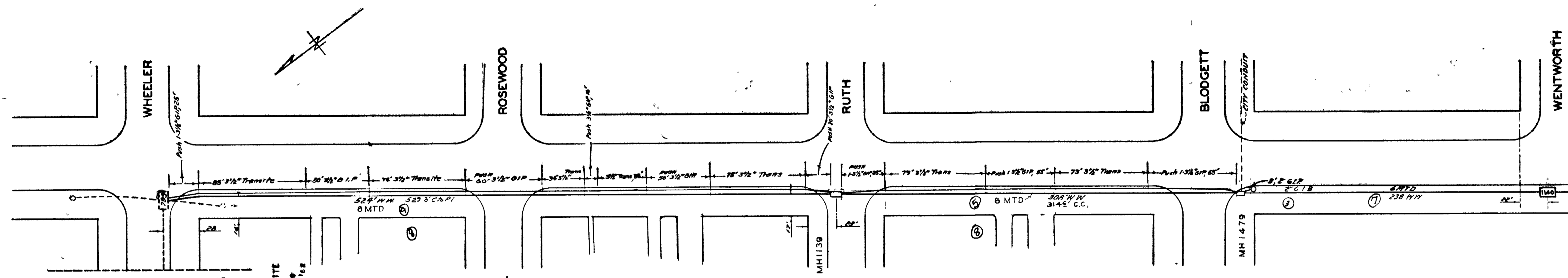
WHEELER

2

HG-31

DRAWN BY  
POSTED BY  
1981 Inv 11-30-81  
C.D.

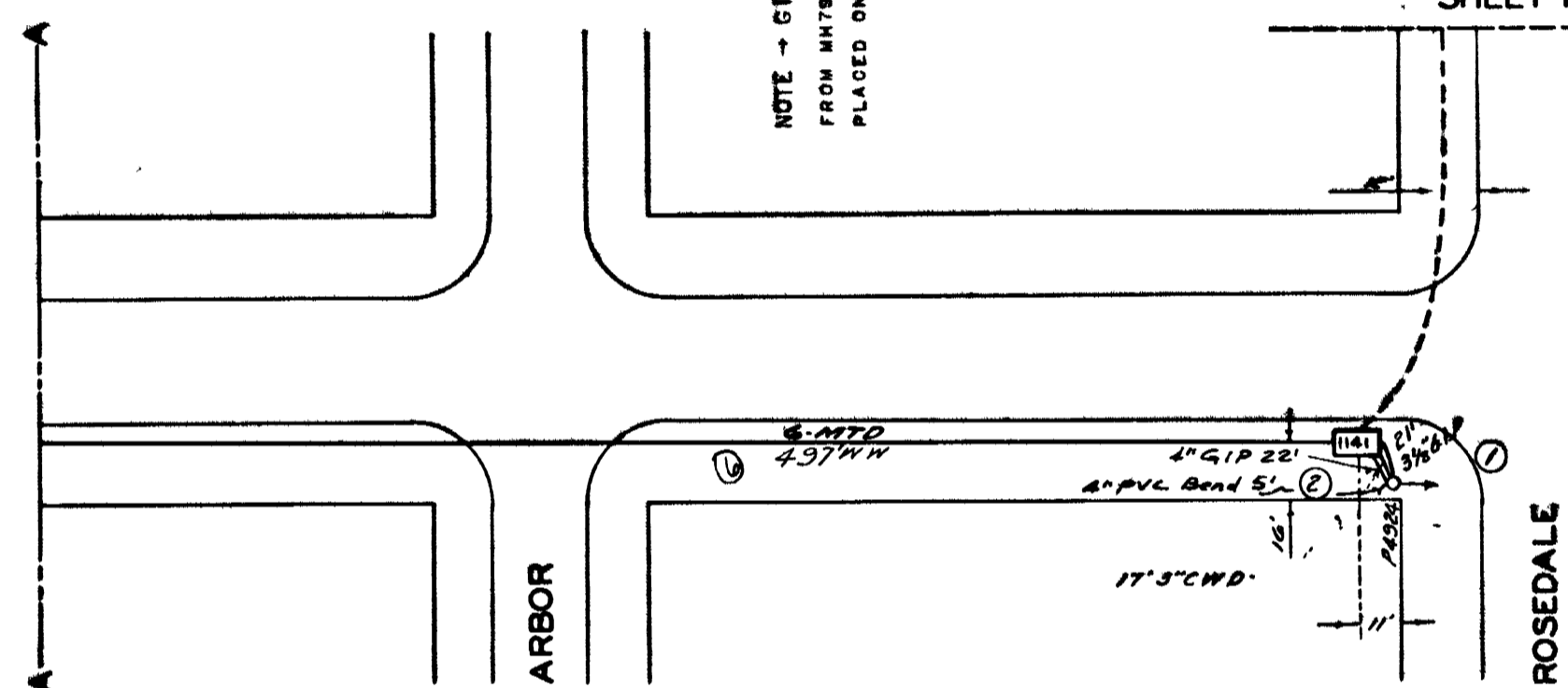
**DELANO STREET**  
WHEELER TO ROSEDALE  
SCALE 1 INCH = 50 FEET



SEE SHEET NO 2 WHEELER

NOTE - GIP AND TRANSITE FROM MH 1139 TO MH 1479 PLACED ON EST P5850 1/2

SEE ROSEDALE SHEET NO.1



**MANHOLES**

MH IDENT	INSIDE DIMENSIONS			VOL CU FT	TYPE	PRCST	COLLAR & COVER	YEAR PLACED	ORDER NO	TAX DIST	REMARKS
	LENGTH	WIDTH	HEADROOM								
1139	8'-2"	3'-6"	5'-5"	154	"A"		1-30"	1981	967	HG031	
1140	8'-3"	3'-6"	5'-7"	154	"A"		1-30"	1981	967	HG031	
1141	8'-2"	3'-5"	5'-8"	154	"A"		1-30"	1981	967	HG031	
1479	6'-0"	3'-0"	4'-0"	72	"Y"		1-27"	1981	9563	HG031	

**MAIN AND SUBSIDIARY CONDUIT**

REF	LENGTH (FT)	NUMBER OF DUCTS	TYPE AND MATERIAL	SIZE (IN)	YEAR PLACED	ORDER NO	TAX DISTRICT	REMARKS
①	21	1	G.I.P	3 1/2"	1981	9484	HG031	
②	5	1	P.U.C.	4"	1981	1674	HG031	
③	3	1	G.I.P	2"	1981	R 8563	HG031	
④	3144	6	M.T.D	3"	1981	967	HG031	
⑤	1948	6	MTD	3"	1981	967	HG031	
⑥	2992	6	MTD	3"	1981	967	HG031	
⑦	1428	6	MTD	3"	1981	967	HG031	
⑧	460 370	7	Trans G.I.P	3 1/2"	1981	P5850	HG031	

**MANHOLES**

NO	INSIDE DIMENS.	MIN. OPENING	SHAPE	RECESS AT DUCTS	TOTAL DEPTH OF EXCAVATION	WALLS	ROOF	FLOOR	COVER SHAPE	COVER SIZE (IN)	WT. COVER (LBS)	GRAIN	DATE	REMARKS
1139	8'2" x 3'6" x 5'5"	30"	RECT		8'	C	C	C	R				1930	Est 967
1140	8'3" x 3'6" x 5'7"	30"	RECT		8'10"	C	C	C	R				1930	Est 967
1141	8'2" x 3'5" x 5'8"	30"	RECT		9'	C	C	C	R				1930	Est 967
1479	6'0" x 3'0" x 4'0"	27"	RECT						R				1941	R 8563 TYPE Y

**MAIN CONDUIT**

**ACCOUNTING CLASSIFICATION**

FROM	TO	NO	DATE	REMARKS
10-4	10-4			
1739	1139		1930	Est 967
1139	1479	P	1930	Est 967
1140	1141		1930	Est 967
1479	1140	P	1930	Est 967
799	1479		1962	Est P5850, 1 DUCT, GIP & Trans

**LATERALS**

NO	ORIGINAL PAVEMENT			SUB-SURFACE		DATE	REMARKS
	SURF	BASE	LENGTH	TYFF	LENGTH		
1	S		12'			1930	R 0 9484
2	D					1936	Est 1674
3			3'			1941	R 8563

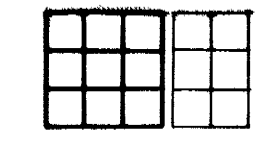
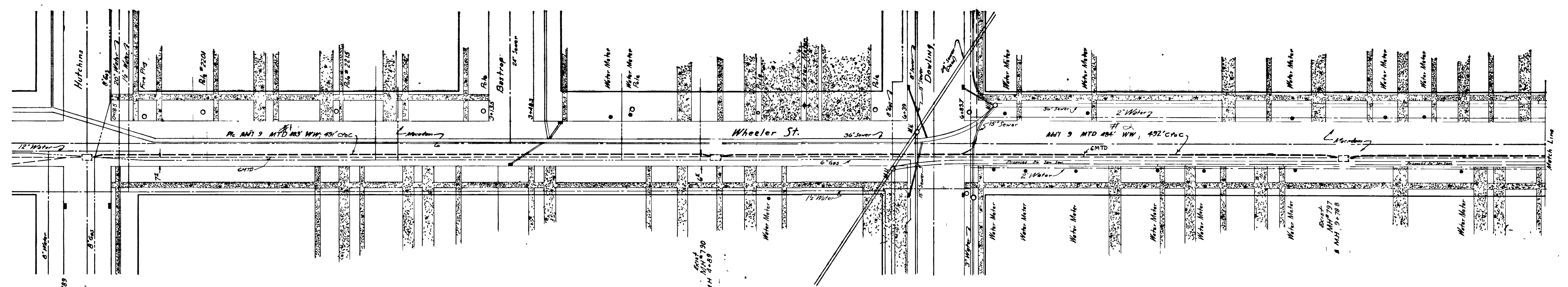
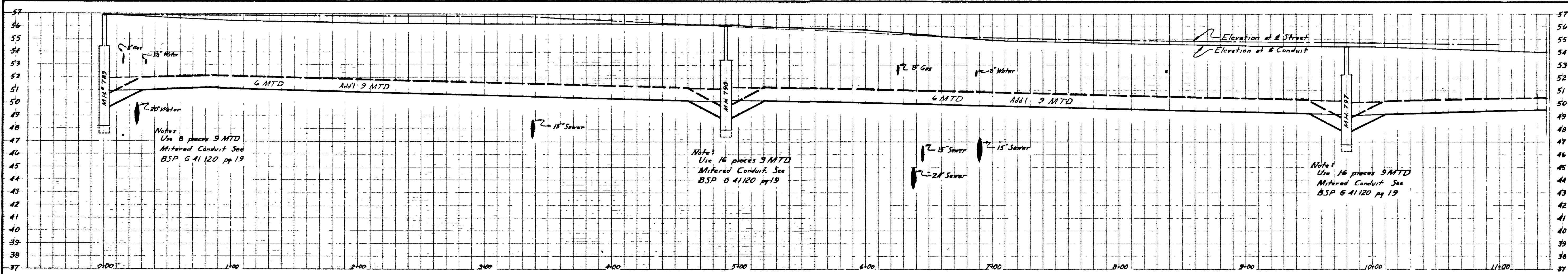
**LATERALS Jackson**

NO	ORIGINAL PAVEMENT			SUB-SURFACE		DATE	REMARKS
	SURF	BASE	LENGTH	TYFF	LENGTH		

INTEREST 6-3-31

POSTED	BY
6-3-31	RMCJr
1934 INV	10-15-36 EP

DELANO STREET  
HG-31



Typical Cross Section  
Looking East in Trench  
From MH 789 to MH 797

MAIN AND SUBSIDIARY CONDUIT

REF	LENGTH (FT)	NUMBER OF DUCTS	TYPE AND MATERIAL	SIZE (IN)	YEAR PLACED	ORDER NO	TAX DISTRICT	REMARKS
#1	4347	9	MTD	3 1/2	1981	5041	HG-031	
#2	4356	9	MTD	3 1/2	1981	5041	HG-031	

Bench Mark  
N Rim San MH Delano and Rosedale  
50.67

Jackson

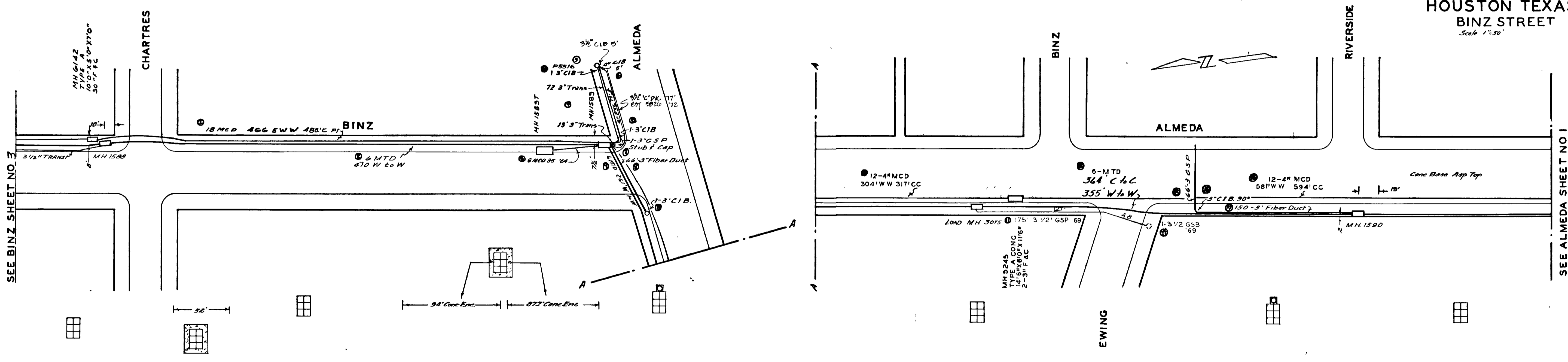
HG-31

JOB NUMBER		WHEELER ST. HOUSTON, TEXAS	
SCALE PLAN 1" = 40" PROFILE HORZ 1" = 40" PROFILE VERT 1" = 4"			
SOUTHWESTERN BELL TELEPHONE CO			
ENGR		DIV PLANT ENGR	
DATE ISSUED 2-27-50	DATE CONST 1950 unless COMP'D - show otherwise	SHEET NO	
E R NO 16257	EST NO 5041	DRAWN BY RHP	
25 78 3		2-A	

Book 5

MAIN AND SUBSIDIARY CONDUIT						
REF	LENGTH (FT)	NUMBER OF DUCTS	TYPE AND MATERIAL	SIZE (IN)	YEAR PLACED	TAX DISTRICT
①	8397	18	M.C.D	3"	1981	HG031
②	2820	6	M.T.D.	3"	1981	HG031
③	210	6	M.C.D	3"	1981	HG031
④	85	2	Trans	3"	1981	HG031
⑤		3	C.I.B	3"	1981	HG031
⑥	5	1	C.I.B.	4"	1981	HG031
⑦		1	G.S.P.	3"	1981	HG031
⑧	66	1	FIBER DUCT	3"	1981	HG031
⑨	1566	6	M.T.D	3"	1981	HG031
⑩	3648	12	M.C.D	4"	1981	HG031
⑪	175	1	G.S.P	3 1/2"	1981	HG031
⑫	2150	6	M.T.D.	3"	1981	HG031
⑬	66	1	G.S.P.	3"	1981	HG031
⑭		1	G.S.B	3 1/2"	1981	HG031
⑮	90	1	C.I.B	3"	1981	HG031
⑯	6972	12	M.C.D	4"	1981	HG031
⑰	150		FIBER DUCT	3"	1981	HG031

MANHOLES										
M H IDENT	INSIDE DIMENSIONS			VOL CU FT	TYPE	PRCST	COLLAR & COVER	YEAR PLACED	ORDER NO	TAX DIST
	LENGTH	WIDTH	HEADROOM							
6192	10'-0"	5'-0"	7'-0"	350	"A"		1-30"	1981	P8039	HG031
1589T	11'-0"	9'-0"	8'-3"	792	"A"		2-30"	1981	6419	HG031
1589	10'-0"	5'-0"	8'-0"	400	"L"		1-30"	1981	5172	HG031
L3075	10'-0"	4'-0"	8'-0"	320	"A"		1-30"	1981	7464	HG031
1588	8'-0"	3'-6"	5'-6"	154	"A"		1-27"	1981	5172	HG031
5245	14'-6"	6'-0"	11'-6"	1000.5	"A"		2-30"	1981	5257	HG031
1590	8'-0"	3'-6"	5'-6"	154	"A"		1-27"	1981	5172	HG031



HOUSTON TEXAS  
BINZ STREET  
Scale 1"=50'

MANHOLES

M H	INSIDE DIMENS L W-HD RM	MIN OPENING	SHAPE	RECESS AT DUCTS	TOTAL DEPTH OF EXCAV'TN	WALLS	ROOF	FLOOR	OUTER COVER SHAPE	WT (LBS)	INSIDE COVER (LBS)	WT FRAME (LBS)	DRAIN	DATE	REMARKS
1589	8'x3'6"x5'8"	27"	Rect		9'0"									1946	Est 5172
1589	10'x5'0"x8'0"	30"	Rect		8'6"									1946	Est 5172
1590	8'x3'6"x3'6"	27"	Rect		11'4"									1946	Est 5172
3075	10'x4'0"x8'0"	30"	Rect											1955	Est 7464
1589T	11'0"x9'0"x8'5"	23"												1964	Est 6419 63

MAIN CONDUIT

FROM M H	TO & INCL M H	ACCOUNTING CLASSIFICATION			DATE	REMARKS
		SURFACE	BASE	LENGTH		

LATERALS

NO	ORIGINAL PAVEMENT			SUB-SURFACE		DATE	REMARKS
	SURFACE	BASE	LENGTH	TYPE	LENGTH		
3						1946	Est 5172
4						1946	Est 5172
5						1950	Est 5041

4  
HG-31  
DRAWN BY  
2-21-47 AG  
POSTED