



CenterPoint Energy Enx

F31500708



USER ID:
I220386

SCALE:
1" = 150'

DATE:
5/16/2013

N. FACET:
F31500710

E. FACET:
F31530708

S. FACET:
F31500706

W. FACET:
F31470708

NOTES:

TOWN: in ViewPlaceName

THIS MAP SHOWS GAS FACILITIES IN APPROXIMATE LOCATIONS. CONTRACTORS AND ENGINEERS SHALL DETERMINE EXACT LOCATIONS BEFORE EXCAVATING. CONTRACTORS AND ENGINEERS ARE FULLY RESPONSIBLE FOR ANY DAMAGES TO GAS FACILITIES RESULTING FROM THEIR EXCAVATIONS.



CenterPoint
Energy
Facilities

F31500706



USER ID:
i220386

SCALE:
1" = 150'

DATE:
5/16/2013

N. FACET:
F31500708

E. FACET:
F31530706

S. FACET:
F31500704

W. FACET:
F31470706

NOTES:

TOWN: In ViewPlaceName

THIS MAP SHOWS GAS FACILITIES IN APPROXIMATE LOCATION. CONTRACTORS AND ENGINEERS SHALL DETERMINE EXACT
LOCATIONS BEFORE EXCAVATING. CONTRACTORS AND ENGINEERS ARE FULLY RESPONSIBLE FOR ANY DAMAGES TO GAS
FACILITIES RESULTING FROM THEIR EXCAVATION.



CenterPoint Energy
Enex

F31500704



USER ID:
i220386

SCALE:
1" = 150'

DATE:
5/16/2013

N. FACET:
F31500706

E. FACET:
F31530704

S. FACET:
F31500702

W. FACET:
F31470704

NOTES:

TOWN: In ViewPlaceName

THIS MAP SHOWS GAS FACILITIES IN APPROXIMATE LOCATIONS. CONTRACTORS AND ENGINEERS SHALL DETERMINE EXACT LOCATIONS BEFORE EXCAVATING. CONTRACTORS AND ENGINEERS ARE FULLY RESPONSIBLE FOR ANY DAMAGES TO GAS FACILITIES RESULTING FROM THEIR EXCAVATIONS.



CenterPoint Energy Gas

F31470704



USER ID:
I220386

SCALE:
1" = 150'

DATE:
5/16/2013

N. FACET:
F31470706

E. FACET:
F31500704

S. FACET:
F31470702

W. FACET:
F31440704

NOTES:

TOWN: InViewPlaceName

THIS MAP SHOWS GAS FACILITIES IN APPROXIMATE LOCATIONS. CONTRACTORS AND ENGINEERS SHALL DETERMINE EXACT LOCATIONS BEFORE EXCAVATING. CONTRACTORS AND ENGINEERS ARE FULLY RESPONSIBLE FOR ANY DAMAGES TO GAS FACILITIES RESULTING FROM THEIR EXCAVATIONS.



CenterPoint
Energy
Enex

F31470702



USER ID:
i220386

SCALE:
1" = 150'

DATE:
5/16/2013

N. FACET:
F31470704

E. FACET:
F31500702

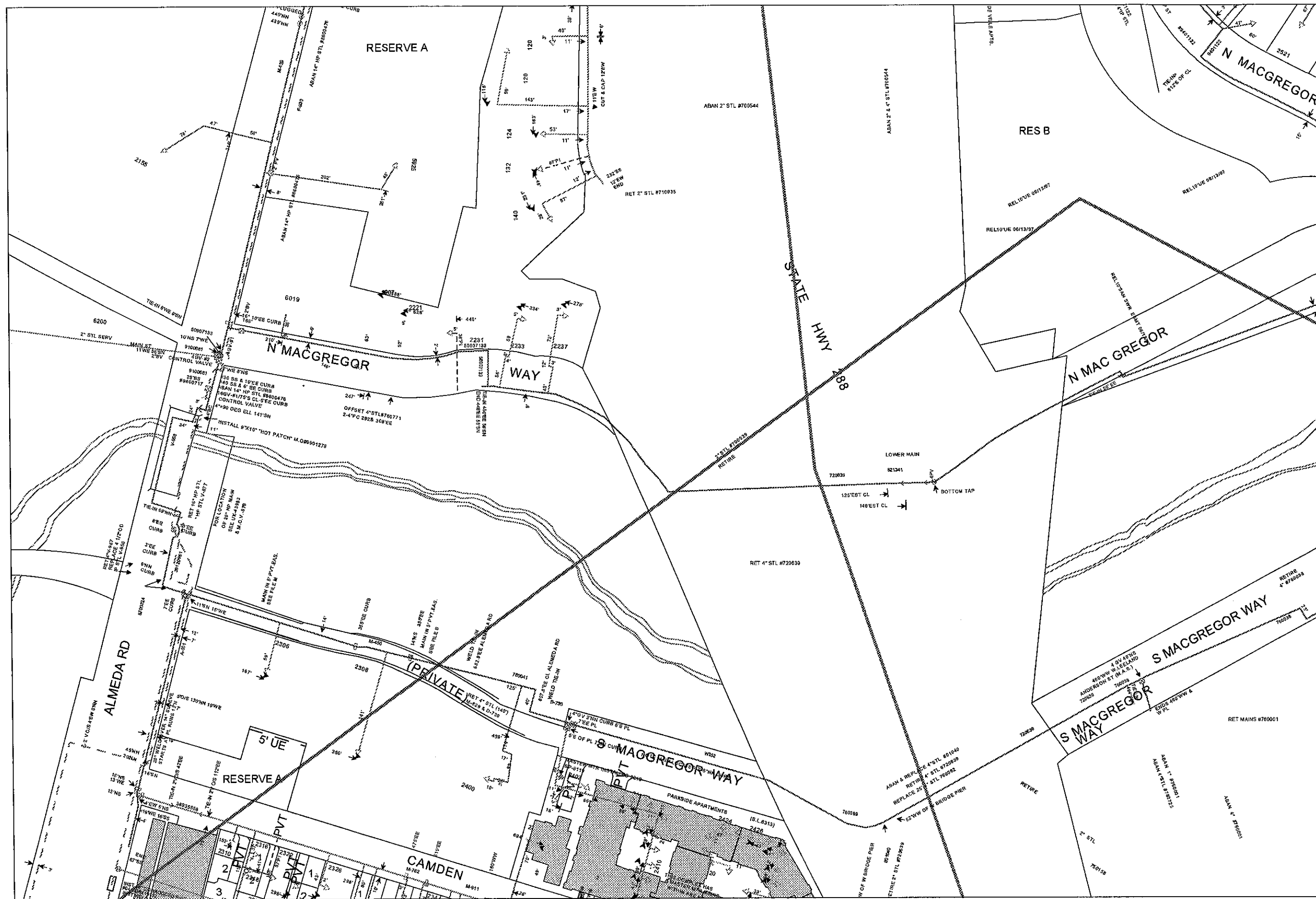
S. FACET:
F31470700

W. FACET:
F31440702

NOTES:

TOWN: In ViewPlaceName

THIS MAP SHOWS GAS FACILITIES IN APPROXIMATE LOCATIONS. CONTRACTORS AND ENGINEERS SHALL DETERMINE EXACT LOCATIONS BEFORE EXCAVATING. CONTRACTORS AND ENGINEERS ARE FULLY RESPONSIBLE FOR ANY DAMAGES TO GAS FACILITIES RESULTING FROM THEIR EXCAVATIONS.



CenterPoint Energy EnMax

F31470700



USER ID:
i220386

SCALE:
1" = 150'

DATE:
5/16/2013

N. FACET:
F31470702

E. FACET:
F31500700

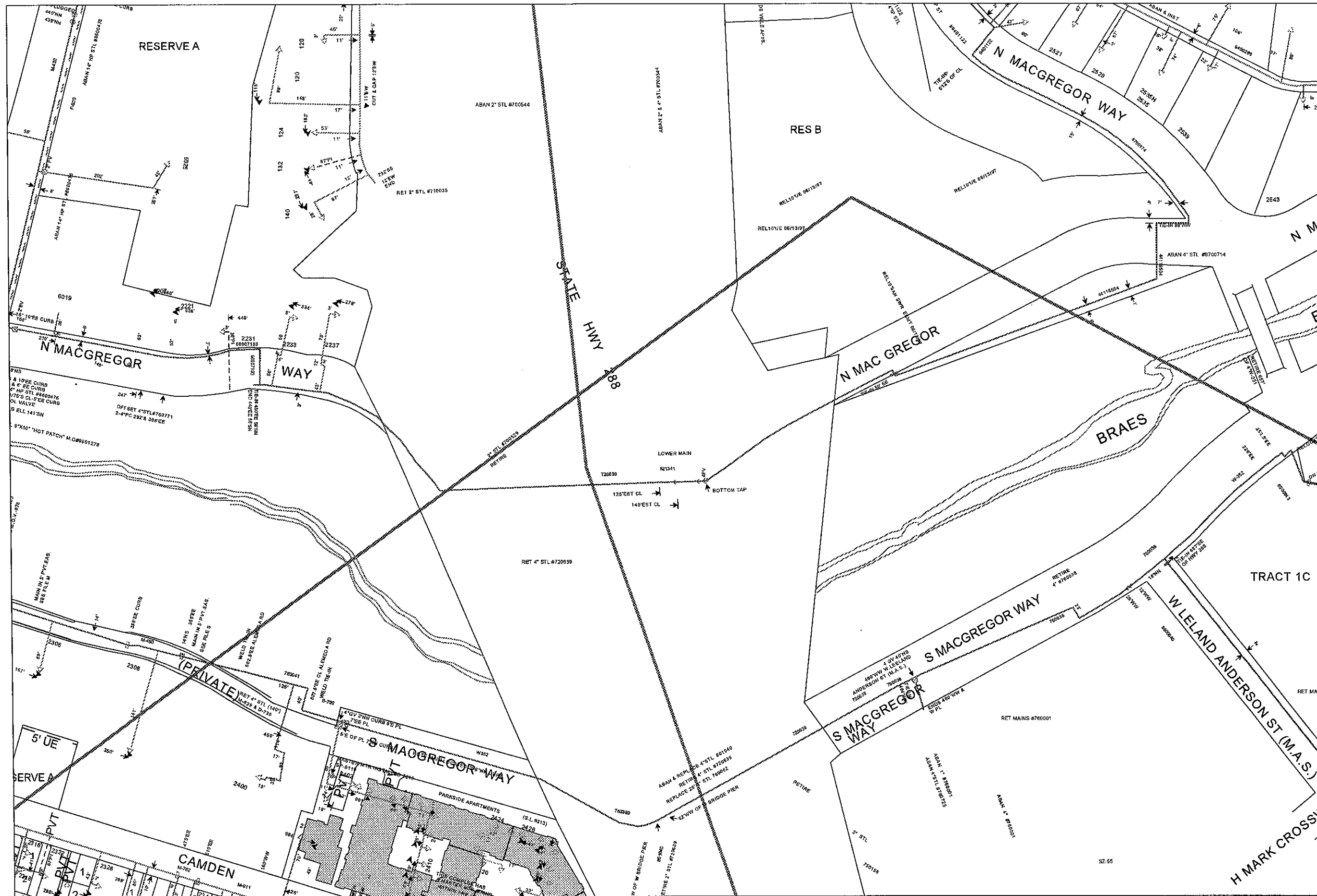
S. FACET:
F31470698

W. FACET:
F31440700

NOTES:

TOWN.InViewPlaceName

THIS MAP SHOWS GAS FACILITIES IN APPROXIMATE LOCATIONS. CONTRACTORS AND ENGINEERS SHALL DETERMINE EXACT LOCATIONS BEFORE EXCAVATING. CONTRACTORS AND ENGINEERS ARE FULLY RESPONSIBLE FOR ANY DAMAGES TO GAS FACILITIES RESULTING FROM THEIR EXCAVATIONS.



CenterPoint
Energy
Elixes

F31470700



USER ID:
i220386

SCALE:
1" = 150'

DATE:
5/16/2013

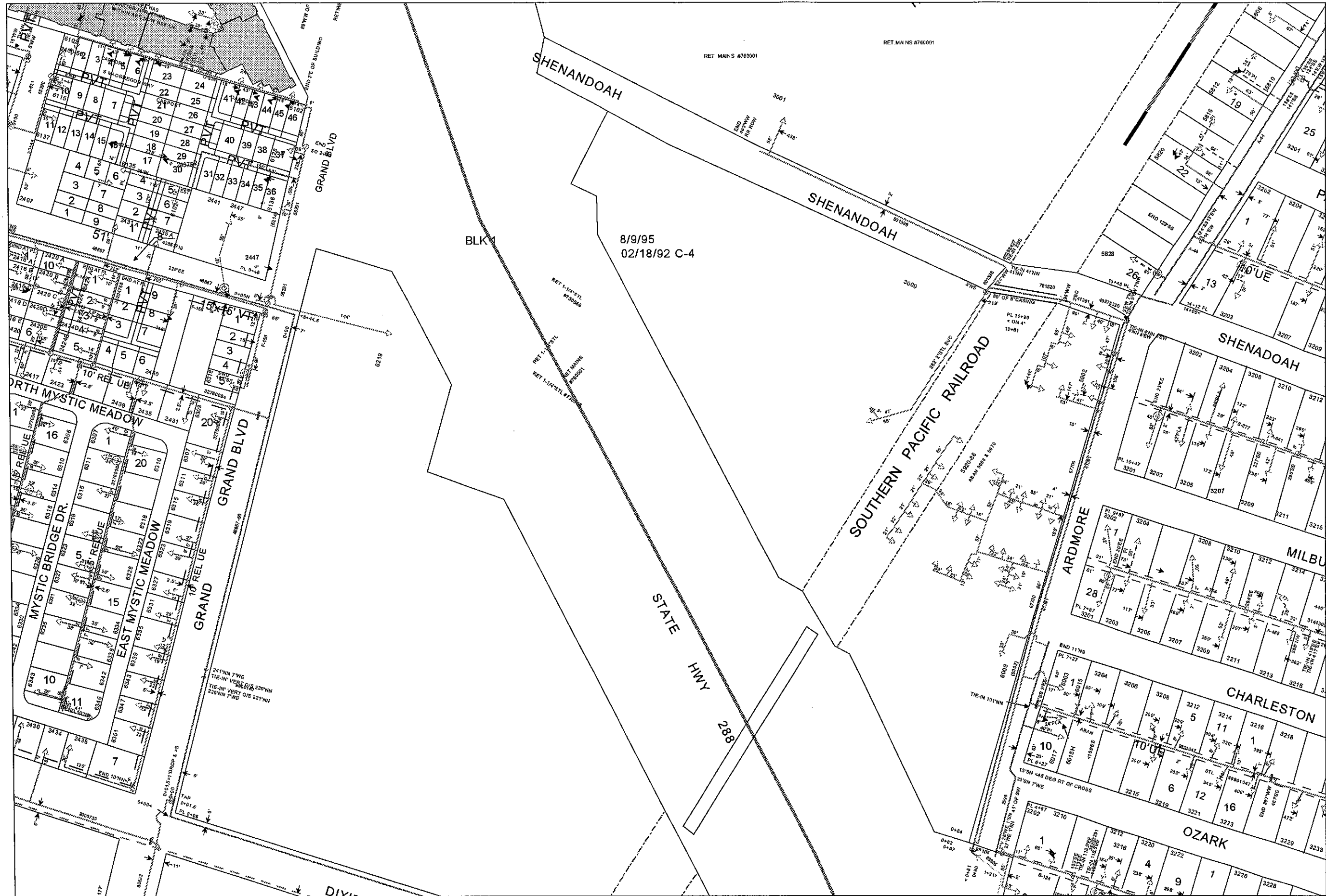
N. FACET:
F31470702

E. FACET:
F31500700

S. FACET:
F31470698

W. FACET:
F31440700

NOTES:
TOWN: InViewPlaceName
THIS MAP SHOWS GAS FACILITIES IN APPROXIMATE LOCATIONS. CONTRACTORS AND ENGINEERS SHALL DETERMINE EXACT LOCATIONS BEFORE EXCAVATING. CONTRACTORS AND ENGINEERS ARE FULLY RESPONSIBLE FOR ANY DAMAGES TO GAS FACILITIES RESULTING FROM THEIR EXCAVATIONS.



CenterPoint
Energy
Gis

F31500698



USER ID:
i220386

SCALE:
1" = 150'

DATE:
5/16/2013

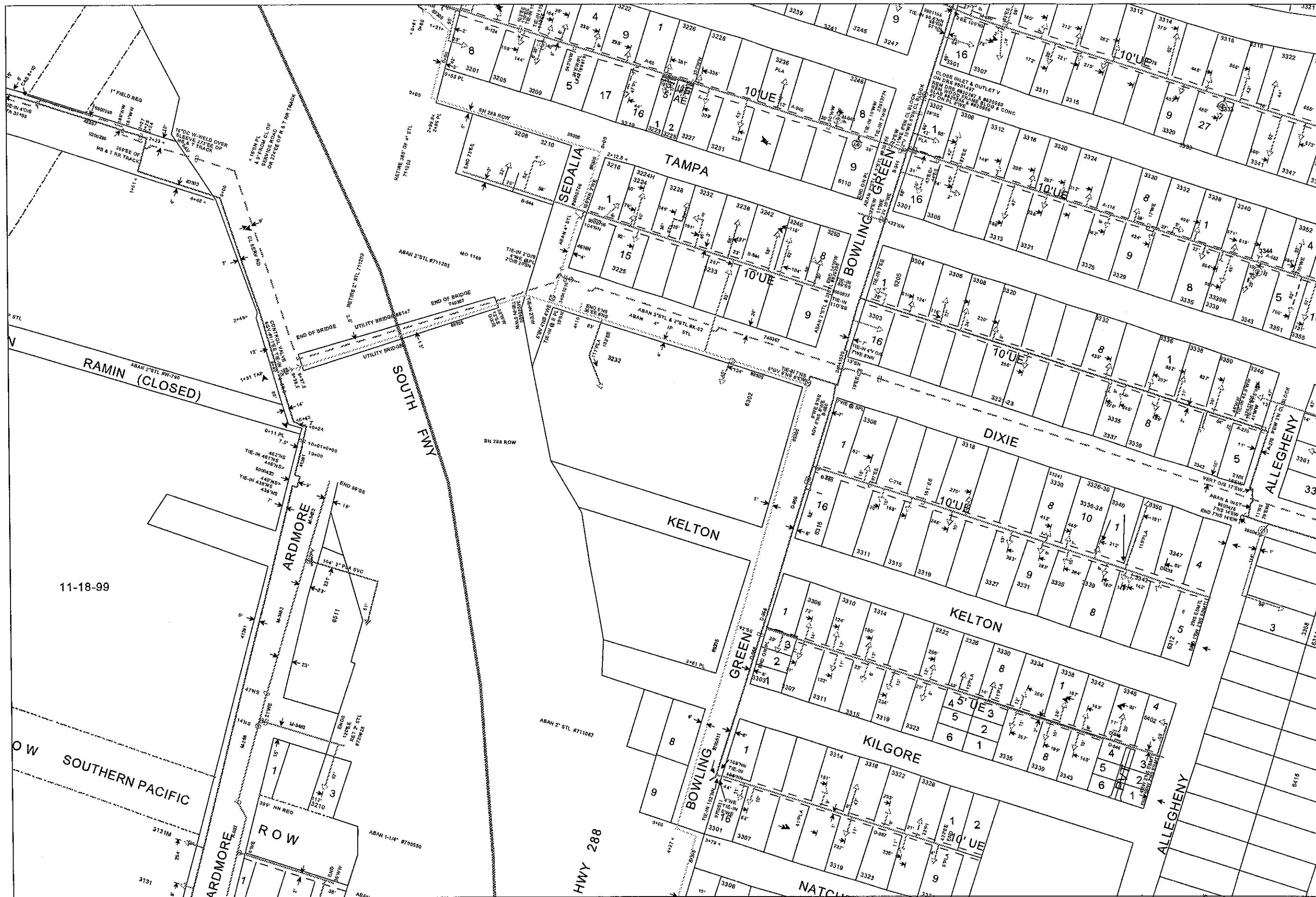
N. FACET:
F31500700

E. FACET:
F31530698

S. FACET:
F31500696

W. FACET:
F31470698

NOTES:
TOWN: In ViewPlaceName
THIS MAP SHOWS GAS FACILITIES IN APPROXIMATE LOCATIONS. CONTRACTORS AND ENGINEERS SHALL DETERMINE EXACT LOCATIONS BEFORE EXCAVATING. CONTRACTORS AND ENGINEERS ARE FULLY RESPONSIBLE FOR ANY DAMAGES TO GAS FACILITIES RESULTING FROM THEIR EXCAVATIONS.



CenterPoint
Energy
Enx

F31500698



USER ID:
I220386

SCALE:
1" = 150'

DATE:
5/16/2013

N. FACET:
F31500700

E. FACET:
F31530698

S. FACET:
F31500696

W. FACET:
F31470698

NOTES:
TOWN: In ViewPlaceName
THIS MAP SHOWS GAS FACILITIES IN APPROXIMATE LOCATIONS. CONTRACTORS AND ENGINEERS SHALL DETERMINE EXACT LOCATIONS BEFORE EXCAVATING. CONTRACTORS AND ENGINEERS ARE FULLY RESPONSIBLE FOR ANY DAMAGES TO GAS FACILITIES RESULTING FROM THEIR EXCAVATIONS.

11-18-99

HWY 288



CenterPoint
Energy
Enx

F31500696



USER ID:
1220386

SCALE:
1" = 150'

DATE:
5/16/2013

N. FACET:
F31500698

E. FACET:
F31530696

S. FACET:
F31500694

W. FACET:
F31470696

NOTES:

TOWN: In ViewPlaceName

THIS MAP SHOWS GAS FACILITIES IN APPROXIMATE LOCATIONS. CONTRACTORS AND ENGINEERS SHALL DETERMINE EXACT LOCATIONS BEFORE EXCAVATING. CONTRACTORS AND ENGINEERS ARE FULLY RESPONSIBLE FOR ANY DAMAGES TO GAS FACILITIES RESULTING FROM THEIR EXCAVATIONS.

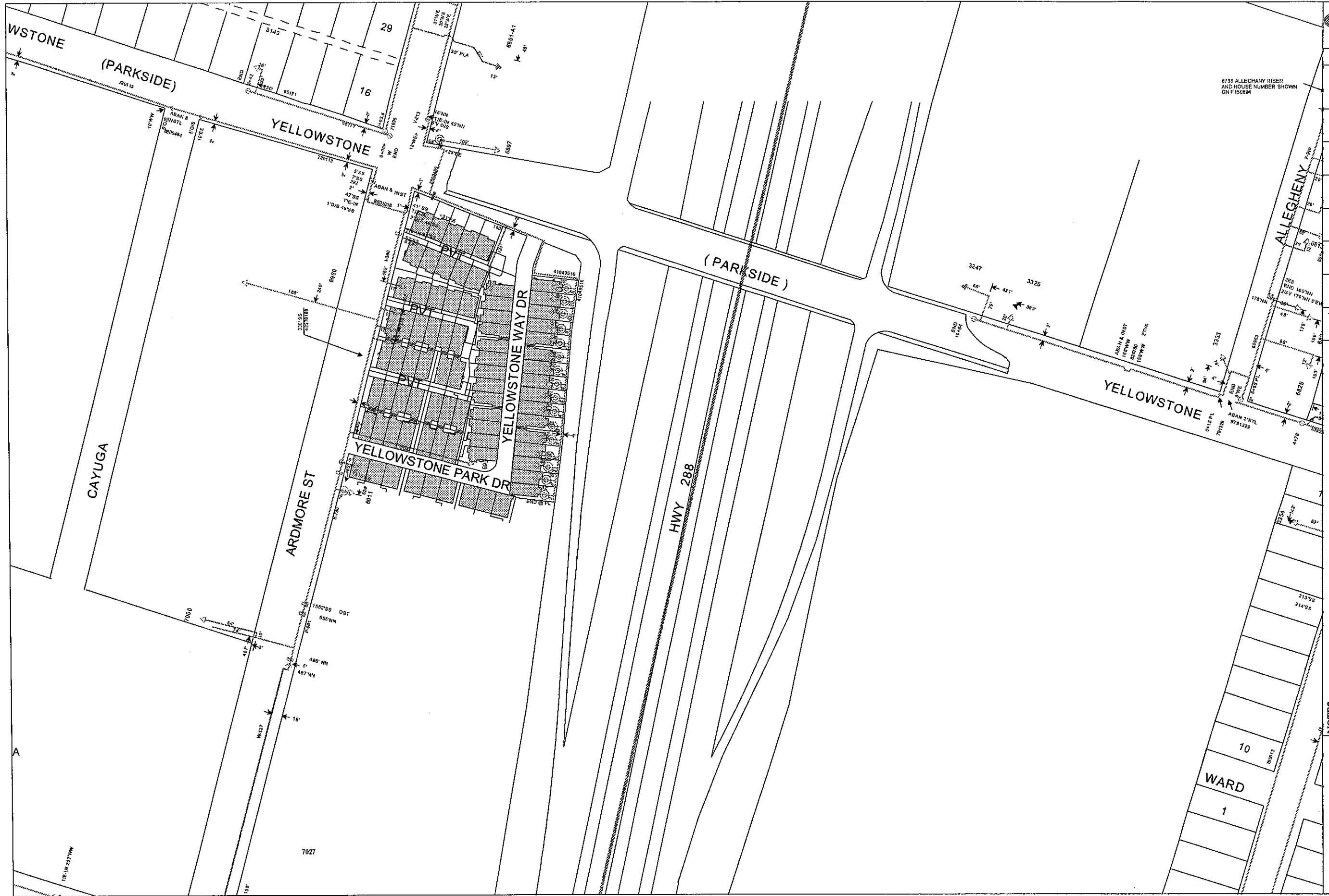
6788 ALLEGHANY RISER



NOTES:

TOWN.In ViewPlaceName

THIS MAP SHOWS GAS FACILITIES IN APPROXIMATE LOCATIONS. CONTRACTORS AND ENGINEERS SHALL DETERMINE EXACT LOCATIONS BEFORE EXCAVATING. CONTRACTORS AND ENGINEERS ARE FULLY RESPONSIBLE FOR ANY DAMAGES TO GAS FACILITIES RESULTING FROM THEIR EXCAVATIONS.



CenterPoint
Energy
Ennis

F31500694



USER ID:
i220386

SCALE:
1" = 150'

DATE:
5/16/2013

N. FACET:
F31500696

E. FACET:
F31530694

S. FACET:
F31500692

W. FACET:
F31470694

6733 ALLEGHENY RISER
AND HOUSE NUMBER SHOWN
ON F150694

NOTES:

TOWN: In ViewPlaceName

THIS MAP SHOWS GAS FACILITIES IN APPROXIMATE LOCATIONS. CONTRACTORS AND ENGINEERS SHALL DETERMINE EXACT LOCATIONS BEFORE EXCAVATING. CONTRACTORS AND ENGINEERS ARE FULLY RESPONSIBLE FOR ANY DAMAGES TO GAS FACILITIES RESULTING FROM THEIR EXCAVATIONS.

WARD
10
1



CenterPoint
Energy
Eratex

F31500694



USER ID:
i220386

SCALE:
1" : 150'

DATE:
5/16/2013

N. FACET:
F31500696

E. FACET:
F31530694

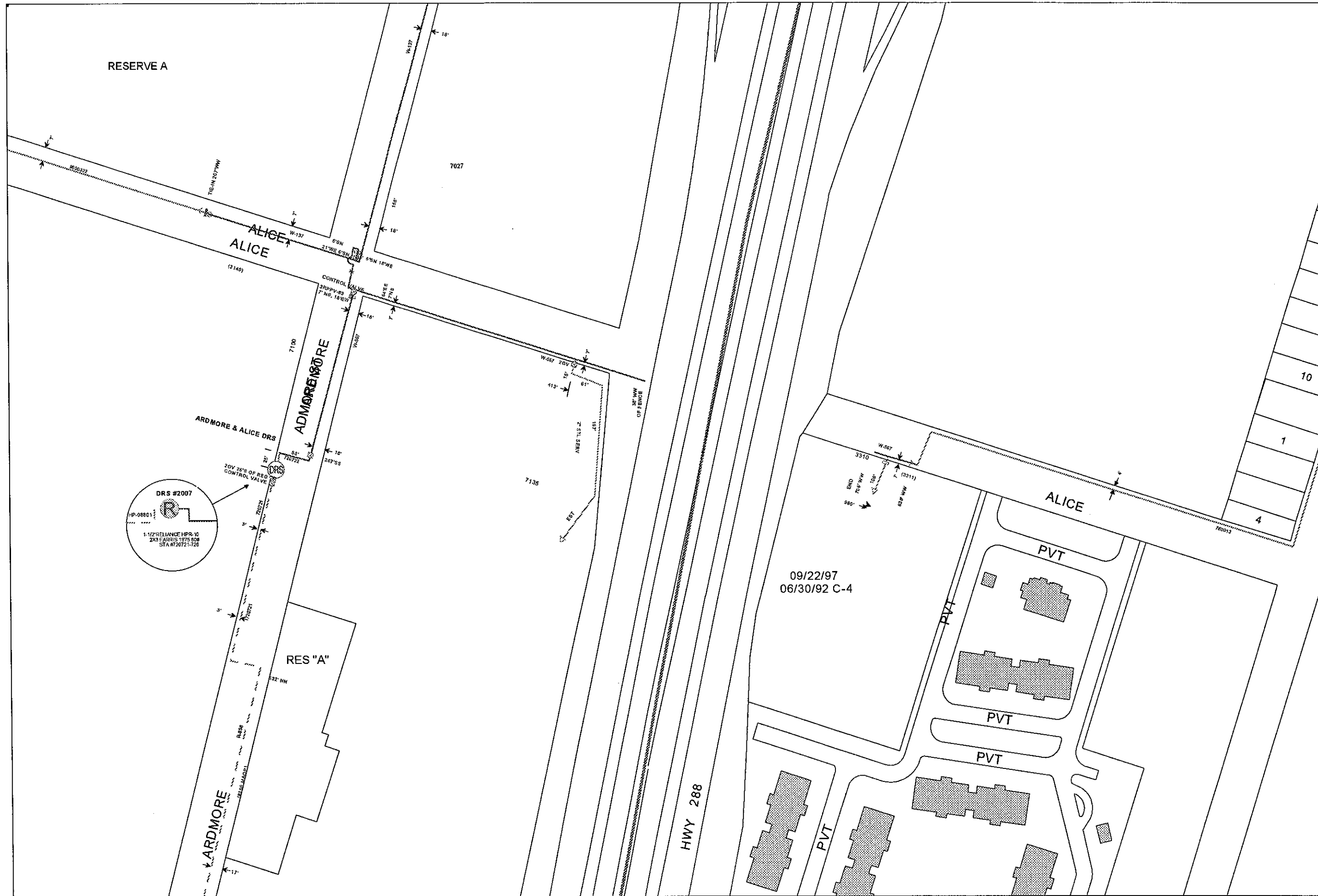
S. FACET:
F31500692

W. FACET:
F31470694

NOTES:

TOWN: In View Place Name

THIS MAP SHOWS GAS FACILITIES IN APPROXIMATE LOCATIONS. CONTRACTORS AND ENGINEERS SHALL DETERMINE EXACT LOCATIONS BEFORE EXCAVATING. CONTRACTORS AND ENGINEERS ARE FULLY RESPONSIBLE FOR ANY DAMAGES TO GAS FACILITIES RESULTING FROM THEIR EXCAVATIONS.



CenterPoint
Energy
GAS

F31500694



USER ID:
i220386

SCALE:
1" = 150'

DATE:
5/16/2013

N. FACET:
F31500696

E. FACET:
F31530694

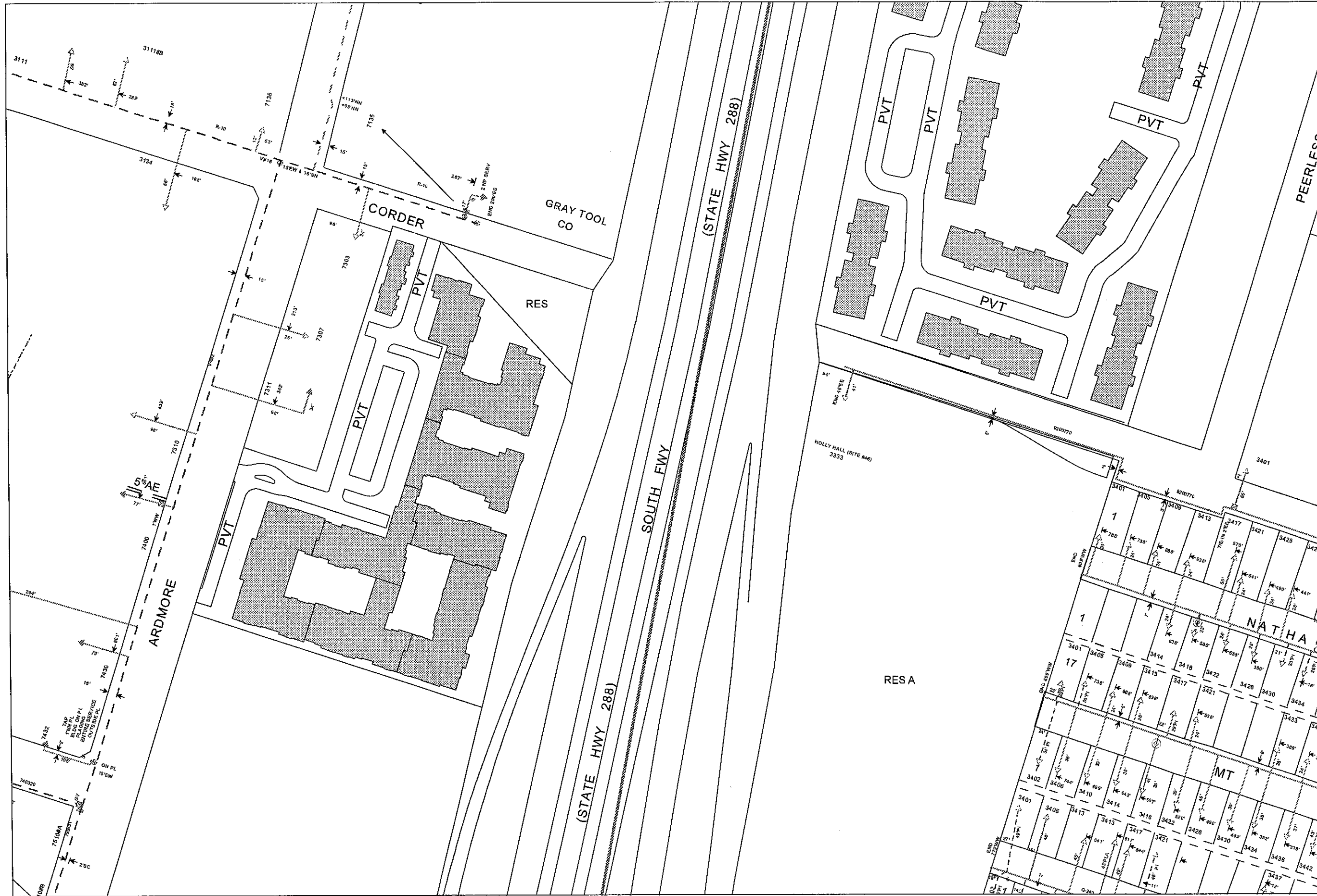
S. FACET:
F31500692

W. FACET:
F31470694

TOWN: In ViewPlaceName

NOTES:

THIS MAP SHOWS GAS FACILITIES IN APPROXIMATE LOCATIONS. CONTRACTORS AND ENGINEERS SHALL DETERMINE EXACT LOCATIONS BEFORE EXCAVATING. CONTRACTORS AND ENGINEERS ARE FULLY RESPONSIBLE FOR ANY DAMAGES TO GAS FACILITIES RESULTING FROM THEIR EXCAVATIONS.



CenterPoint
Energy
EnMax

F31470692



USER ID:
i220386

SCALE:
1" = 150'

DATE:
5/16/2013

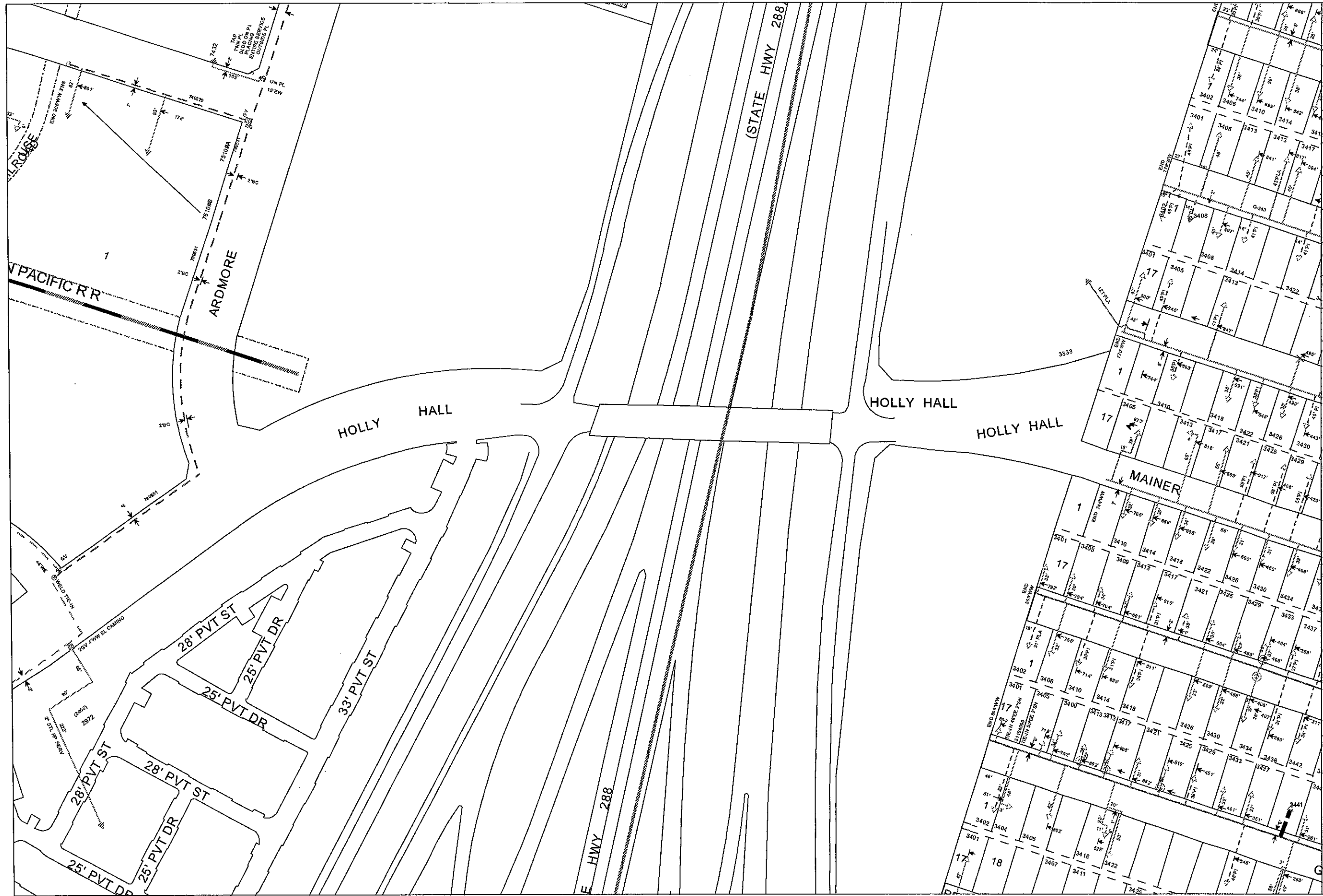
N. FACET:
F31470694

E. FACET:
F31500692

S. FACET:
F31470690

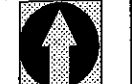
W. FACET:
F31440692

NOTES:
TOWN: In ViewPlaceName
THIS MAP SHOWS GAS FACILITIES IN APPROXIMATE LOCATIONS. CONTRACTORS AND ENGINEERS SHALL DETERMINE EXACT LOCATIONS BEFORE EXCAVATING. CONTRACTORS AND ENGINEERS ARE FULLY RESPONSIBLE FOR ANY DAMAGES TO GAS FACILITIES RESULTING FROM THEIR EXCAVATIONS.



CenterPoint
Energy
Enter

F31470690



USER ID:
i220386

SCALE:
1" = 150'

DATE:
5/16/2013

N. FACET:
F31470692

E. FACET:
F31500690

S. FACET:
F31470688

W. FACET:
F31440690

NOTES:

TOWN: InViewPlaceName

THIS MAP SHOWS GAS FACILITIES IN APPROXIMATE LOCATIONS. CONTRACTORS AND ENGINEERS SHALL DETERMINE EXACT LOCATIONS BEFORE EXCAVATING. CONTRACTORS AND ENGINEERS ARE FULLY RESPONSIBLE FOR ANY DAMAGES TO GAS FACILITIES RESULTING FROM THEIR EXCAVATION.



CenterPoint
Energy
Enex

F31470690



USER ID:
i220386

SCALE:
1" = 150'

DATE:
5/16/2013

N. FACET:
F31470692

E. FACET:
F31500690

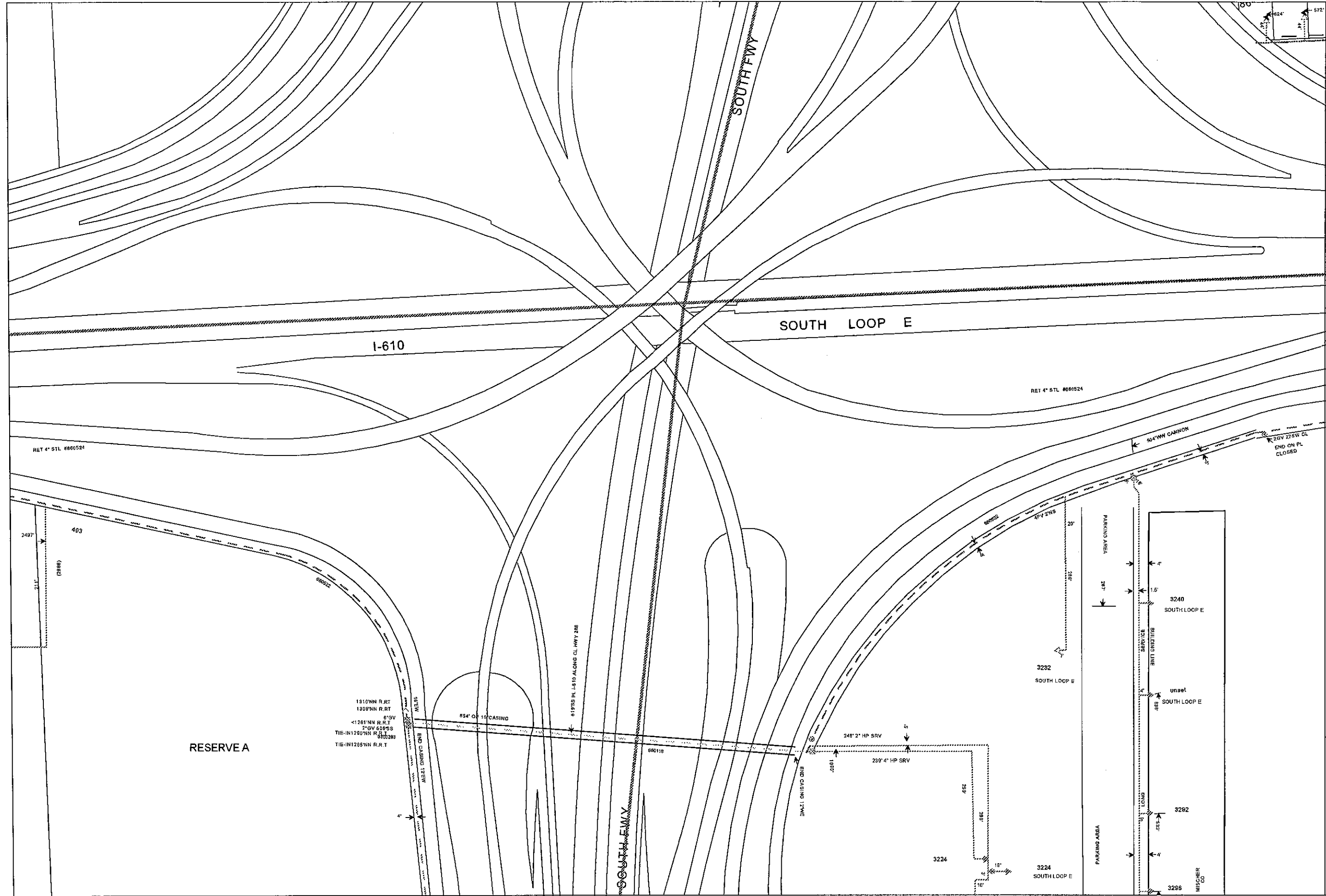
S. FACET:
F31470688

W. FACET:
F31440690

NOTES:

TOWN: InViewPlaceName

THIS MAP SHOWS GAS FACILITIES IN APPROXIMATE LOCATIONS. CONTRACTORS AND ENGINEERS SHALL DETERMINE EXACT LOCATIONS BEFORE EXCAVATING. CONTRACTORS AND ENGINEERS ARE FULLY RESPONSIBLE FOR ANY DAMAGES TO GAS FACILITIES RESULTING FROM THEIR EXCAVATIONS.



F31470688



USER ID:
i220386

SCALE:
1" : 150'

DATE:
5/16/2013

N. FACET:
F31470690

E. FACET:
F31500688

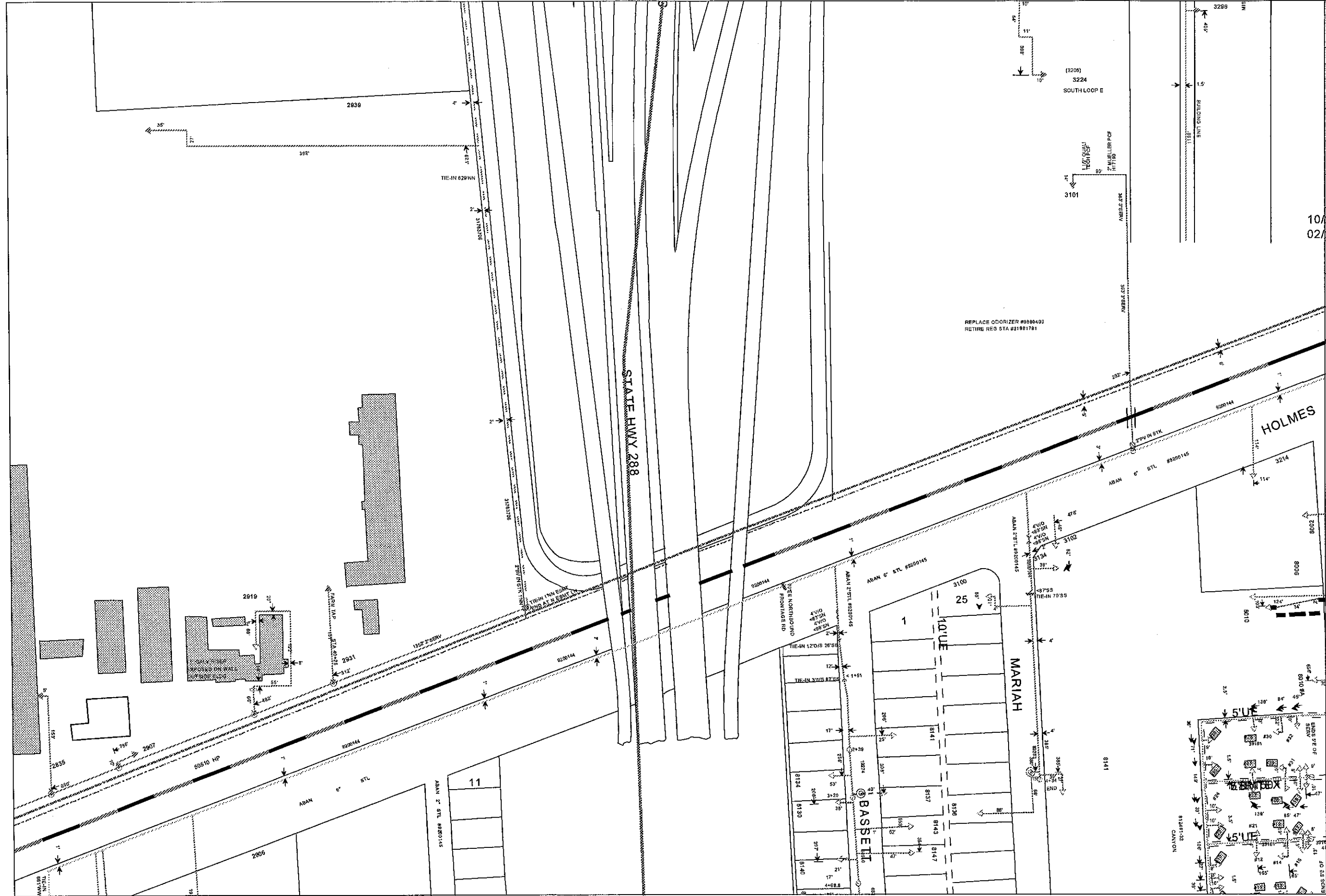
S. FACET:
F31470686

W. FACET:
F31440688

TOWN: InViewPlaceName

NOTES:

THIS MAP SHOWS GAS FACILITIES IN APPROXIMATE LOCATIONS. CONTRACTORS AND ENGINEERS SHALL DETERMINE EXACT LOCATIONS BEFORE EXCAVATING. CONTRACTORS AND ENGINEERS ARE FULLY RESPONSIBLE FOR ANY DAMAGES TO GAS FACILITIES RESULTING FROM THEIR EXCAVATIONS.



CenterPoint
Energy
Erax

F31470686



USER ID:
i220386

SCALE:
1" = 150'

DATE:
5/16/2013

10/ N. FACET:
02/ F31470688

E. FACET:
F31500686

S. FACET:
F31470684

W. FACET:
F31440686

TOWN: In ViewPlaceName

NOTES:

THIS MAP SHOWS GAS FACILITIES IN APPROXIMATE LOCATIONS. CONTRACTORS AND ENGINEERS SHALL DETERMINE EXACT LOCATIONS BEFORE EXCAVATING. CONTRACTORS AND ENGINEERS ARE FULLY RESPONSIBLE FOR ANY DAMAGES TO GAS FACILITIES RESULTING FROM THEIR EXCAVATIONS.

REPLACE ODORIZER #0800400
RETIRE REG STA #31981781

(3206)
3224
SOUTH LOOP E

LEG: QUAL
LIG: QUAL
H: 17.150
2: MULLER PCF
H: 17.150

3101

ABAN 6" STL #9200145

3299 ME

1.5
BUILDING LINE
BELL

HOLMES

MARIAH

BASSETT

STATE HWY 288

ABAN 6" STL #8200145

11

ABAN 6" STL #2200145

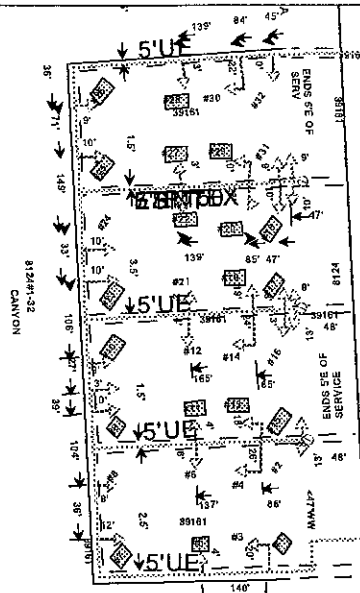
10' UE

25

1418

81245132
CANON

ENDS SEE OF

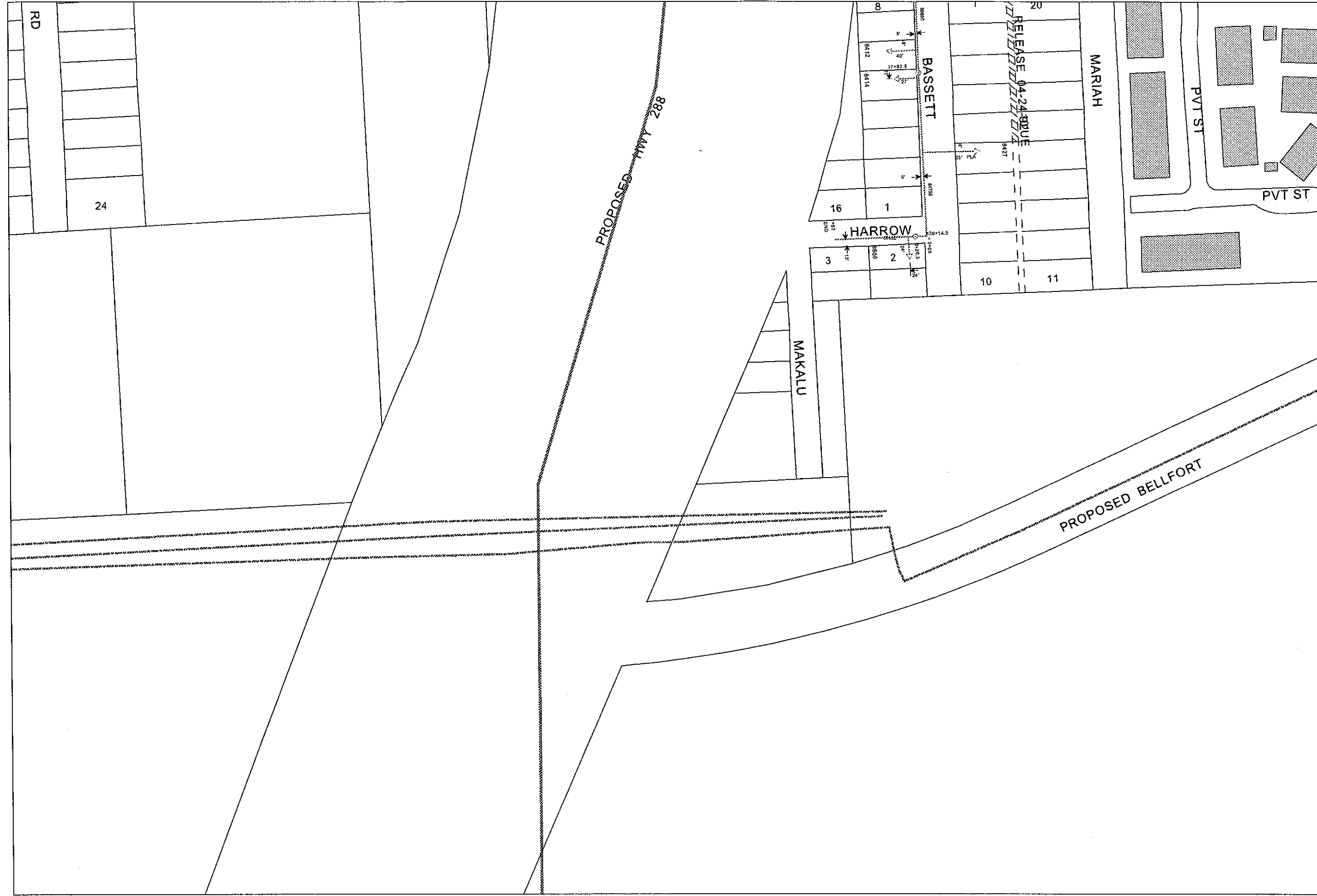


F31470686
USER ID: i220386
SCALE: 1" = 150'
DATE: 5/16/2013
N. FACET: F31470688
E. FACET: F31500686
S. FACET: F31470684
W. FACET: F31440686

NOTES:

TOWN: In ViewPlaceName

THIS MAP SHOWS GAS FACILITIES IN APPROXIMATE LOCATIONS. CONTRACTORS AND ENGINEERS SHALL DETERMINE EXACT LOCATIONS BEFORE EXCAVATING. CONTRACTORS AND ENGINEERS ARE FULLY RESPONSIBLE FOR ANY DAMAGES TO GAS FACILITIES RESULTING FROM THEIR EXCAVATIONS.

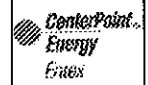


F31470684
USER ID: i220386
SCALE: 1" = 150'
DATE: 5/16/2013
N. FACET: F31470686
E. FACET: F31500684
S. FACET: F31470682
W. FACET: F31440684

TOWN: In ViewPlaceName

NOTES:

THIS MAP SHOWS GAS FACILITIES IN APPROXIMATE LOCATIONS. CONTRACTORS AND ENGINEERS SHALL DETERMINE EXACT LOCATIONS BEFORE EXCAVATING. CONTRACTORS AND ENGINEERS ARE FULLY RESPONSIBLE FOR ANY DAMAGES TO GAS FACILITIES RESULTING FROM THEIR EXCAVATIONS.



F31470682



USER ID:
i220386

SCALE:
1" : 300'

DATE:
5/16/2013

N. FACET:
F31470684

E. FACET:
F31500682

S. FACET:
F31470680

W. FACET:
F31440682

NOTES:

TOWN:In ViewPlaceName

THIS MAP SHOWS GAS FACILITIES IN APPROXIMATE LOCATIONS. CONTRACTORS AND ENGINEERS SHALL DETERMINE EXACT LOCATIONS BEFORE EXCAVATING. CONTRACTORS AND ENGINEERS ARE FULLY RESPONSIBLE FOR ANY DAMAGES TO GAS FACILITIES RESULTING FROM THEIR EXCAVATIONS.



F31470680



USER ID:
i220386

SCALE:
1" : 300'

DATE:
5/16/2013

N. FACET:
F31470682

E. FACET:
F31500680

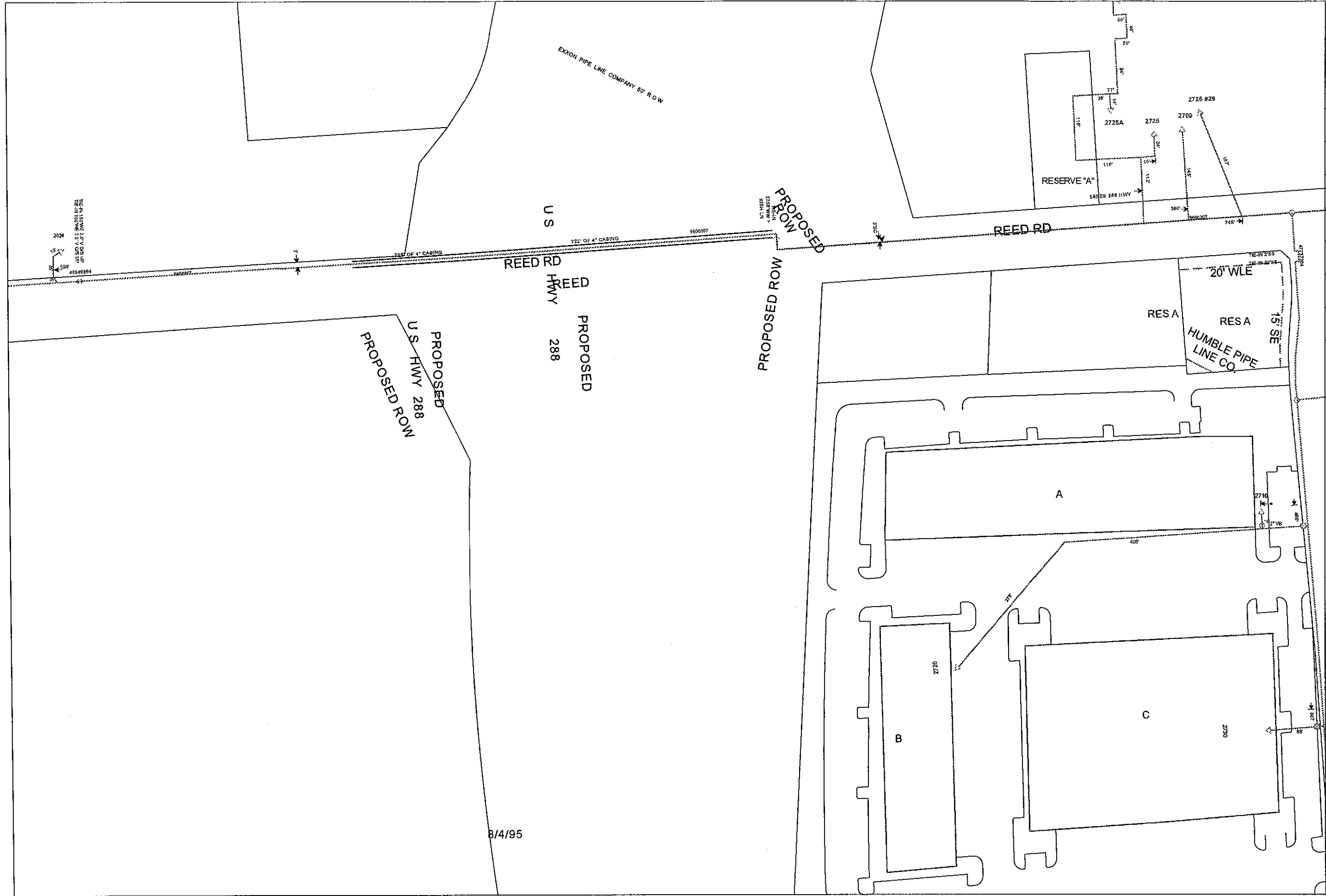
S. FACET:
F31470678

W. FACET:
F31440680

NOTES:

TOWN: InViewPlaceName

THIS MAP SHOWS GAS FACILITIES IN APPROXIMATE LOCATIONS. CONTRACTORS AND ENGINEERS SHALL DETERMINE EXACT LOCATIONS BEFORE EXCAVATING. CONTRACTORS AND ENGINEERS ARE FULLY RESPONSIBLE FOR ANY DAMAGES TO GAS FACILITIES RESULTING FROM THEIR EXCAVATIONS.



CenterPoint
Energy
Group

F31470680



USER ID:
i220386

SCALE:
1" = 150'

DATE:
5/16/2013

N. FACET:
F31470682

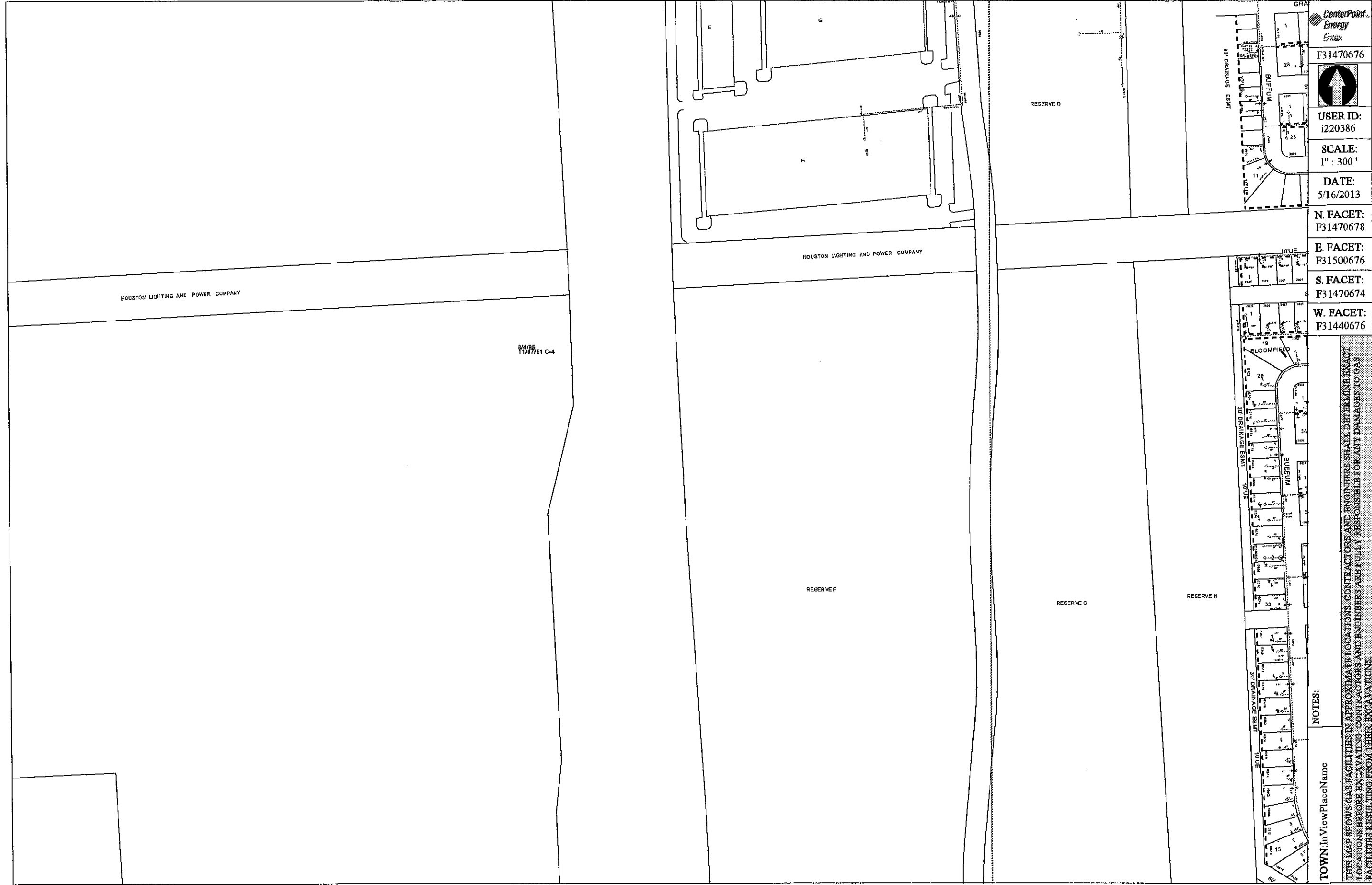
E. FACET:
F31500680

S. FACET:
F31470678

W. FACET:
F31440680

TOWN: In View Place Name

NOTES:
THIS MAP SHOWS GAS FACILITIES IN APPROXIMATE LOCATIONS. CONTRACTORS AND ENGINEERS SHALL DETERMINE EXACT LOCATIONS BEFORE EXCAVATING. CONTRACTORS AND ENGINEERS ARE FULLY RESPONSIBLE FOR ANY DAMAGES TO GAS FACILITIES RESULTING FROM THEIR EXCAVATIONS.



CenterPoint
Energy
Facilities

F31470676



USER ID:
i220386

SCALE:
1" : 300'

DATE:
5/16/2013

N. FACET:
F31470678

E. FACET:
F31500676

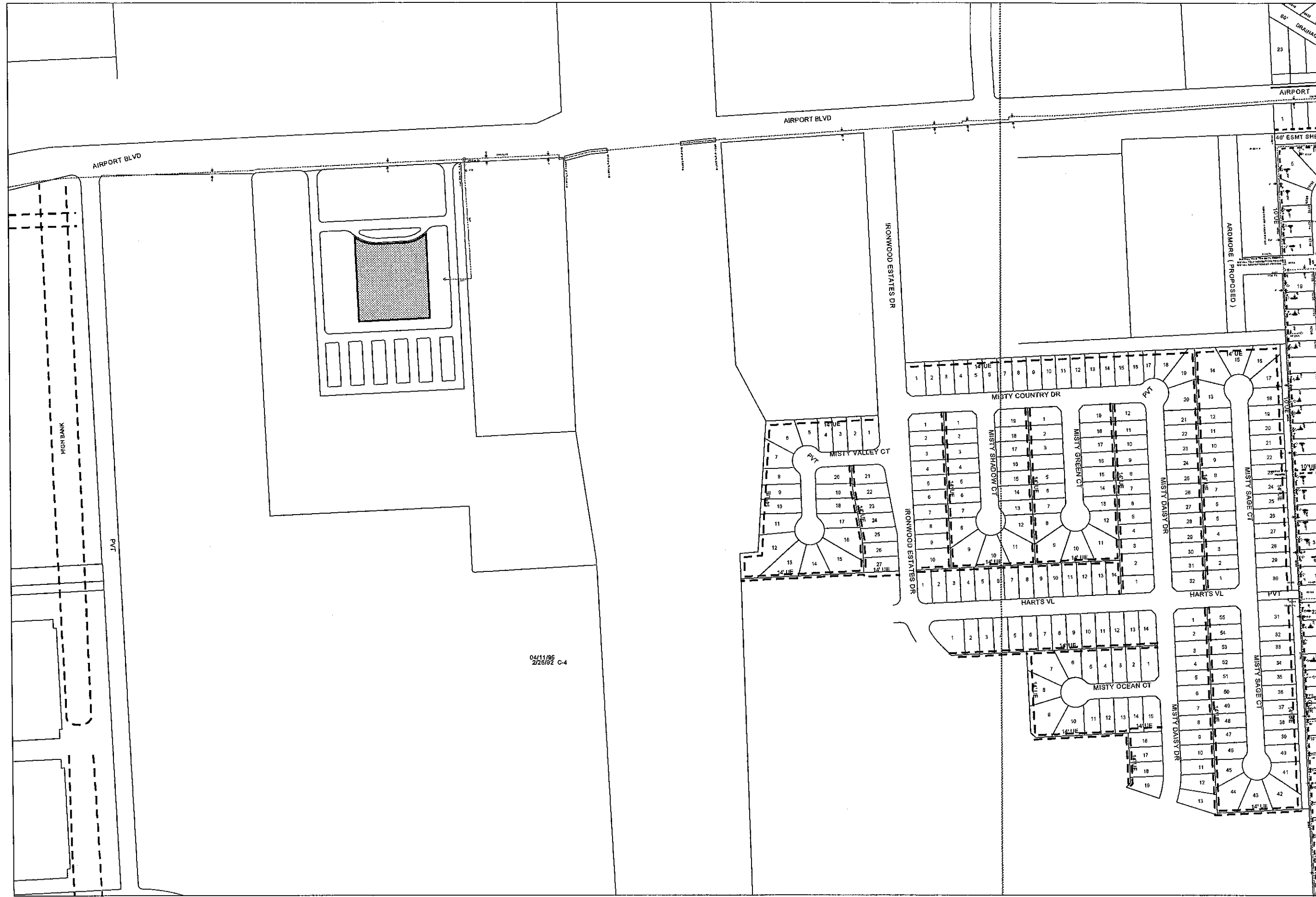
S. FACET:
F31470674

W. FACET:
F31440676

NOTES:

TOWN: InViewPlaceName

THIS MAP SHOWS GAS FACILITIES IN APPROXIMATE LOCATIONS. CONTRACTORS AND ENGINEERS SHALL DETERMINE EXACT LOCATIONS BEFORE EXCAVATING. CONTRACTORS AND ENGINEERS ARE FULLY RESPONSIBLE FOR ANY DAMAGES TO GAS FACILITIES RESULTING FROM THEIR EXCAVATIONS.



CenterPoint
Energy
Enix

F31470674



USER ID:
i220386

SCALE:
1" : 300'

DATE:
5/16/2013

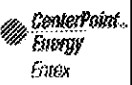
N. FACET:
F31470676

E. FACET:
F31500674

S. FACET:
F31470672

W. FACET:
F31440674

NOTES:
TOWN: In ViewPlaceName
THIS MAP SHOWS GAS FACILITIES IN APPROXIMATE LOCATIONS. CONTRACTORS AND ENGINEERS SHALL DETERMINE EXACT LOCATIONS BEFORE EXCAVATING. CONTRACTORS AND ENGINEERS ARE FULLY RESPONSIBLE FOR ANY DAMAGES TO GAS FACILITIES RESULTING FROM THEIR EXCAVATIONS.



F31470674



USER ID:
i220386

SCALE:
1" : 150'

DATE:
5/16/2013

N. FACET:
F31470676

E. FACET:
F31500674

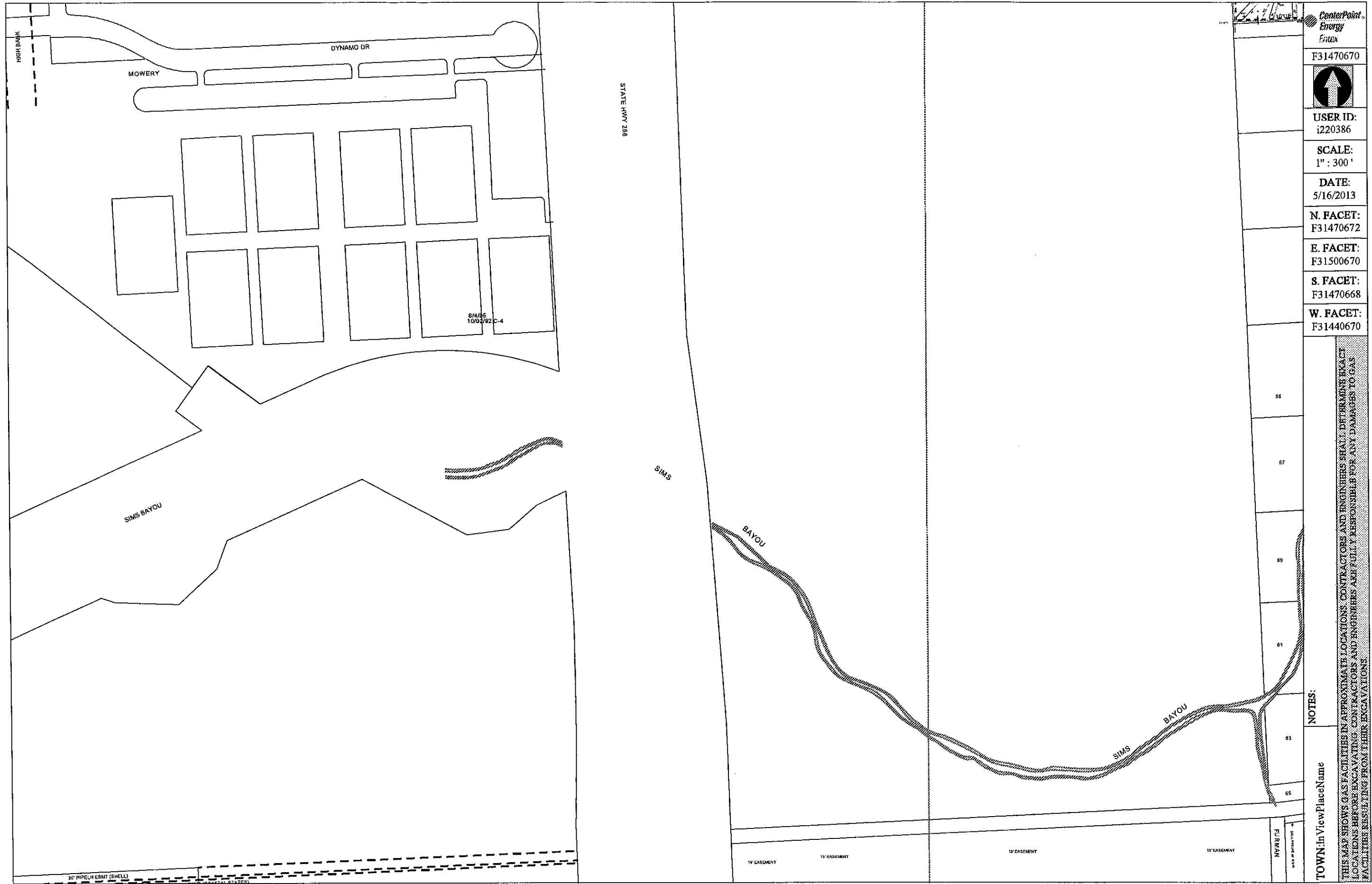
S. FACET:
F31470672

W. FACET:
F31440674

NOTES:

THIS MAP SHOWS GAS FACILITIES IN APPROXIMATE LOCATIONS. CONTRACTORS AND ENGINEERS SHALL DETERMINE EXACT LOCATIONS BEFORE EXCAVATING. CONTRACTORS AND ENGINEERS ARE FULLY RESPONSIBLE FOR ANY DAMAGES TO GAS FACILITIES RESULTING FROM THEIR EXCAVATIONS.

TOWN: InViewPlaceName



CenterPoint Energy Files

F31470670



USER ID: i220386

SCALE: 1" : 300'

DATE: 5/16/2013

N. FACET: F31470672

E. FACET: F31500670

S. FACET: F31470668

W. FACET: F31440670

NOTES:
 THIS MAP SHOWS GAS FACILITIES IN APPROXIMATE LOCATIONS. CONTRACTORS AND ENGINEERS SHALL DETERMINE EXACT LOCATIONS BEFORE EXCAVATING. CONTRACTORS AND ENGINEERS ARE FULLY RESPONSIBLE FOR ANY DAMAGES TO GAS FACILITIES RESULTING FROM THEIR EXCAVATIONS.

TOWN: In View Place Name

FURNAN



F31470668



USER ID:
I220386

SCALE:
1" : 300'

DATE:
5/16/2013

N. FACET:
F31470670

E. FACET:
F31500668

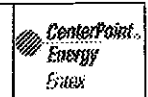
S. FACET:
F31470666

W. FACET:
F31440668

NOTES:

TOWN: InViewPlaceName

THIS MAP SHOWS GAS FACILITIES IN APPROXIMATE LOCATIONS. CONTRACTORS AND ENGINEERS SHALL DETERMINE EXACT LOCATIONS BEFORE EXCAVATING. CONTRACTORS AND ENGINEERS ARE FULLY RESPONSIBLE FOR ANY DAMAGES TO GAS FACILITIES RESULTING FROM THEIR EXCAVATIONS.



F31470664



USER ID:
i220386

SCALE:
1" : 300'

DATE:
5/16/2013

N. FACET:
F31470666

E. FACET:
F31500664

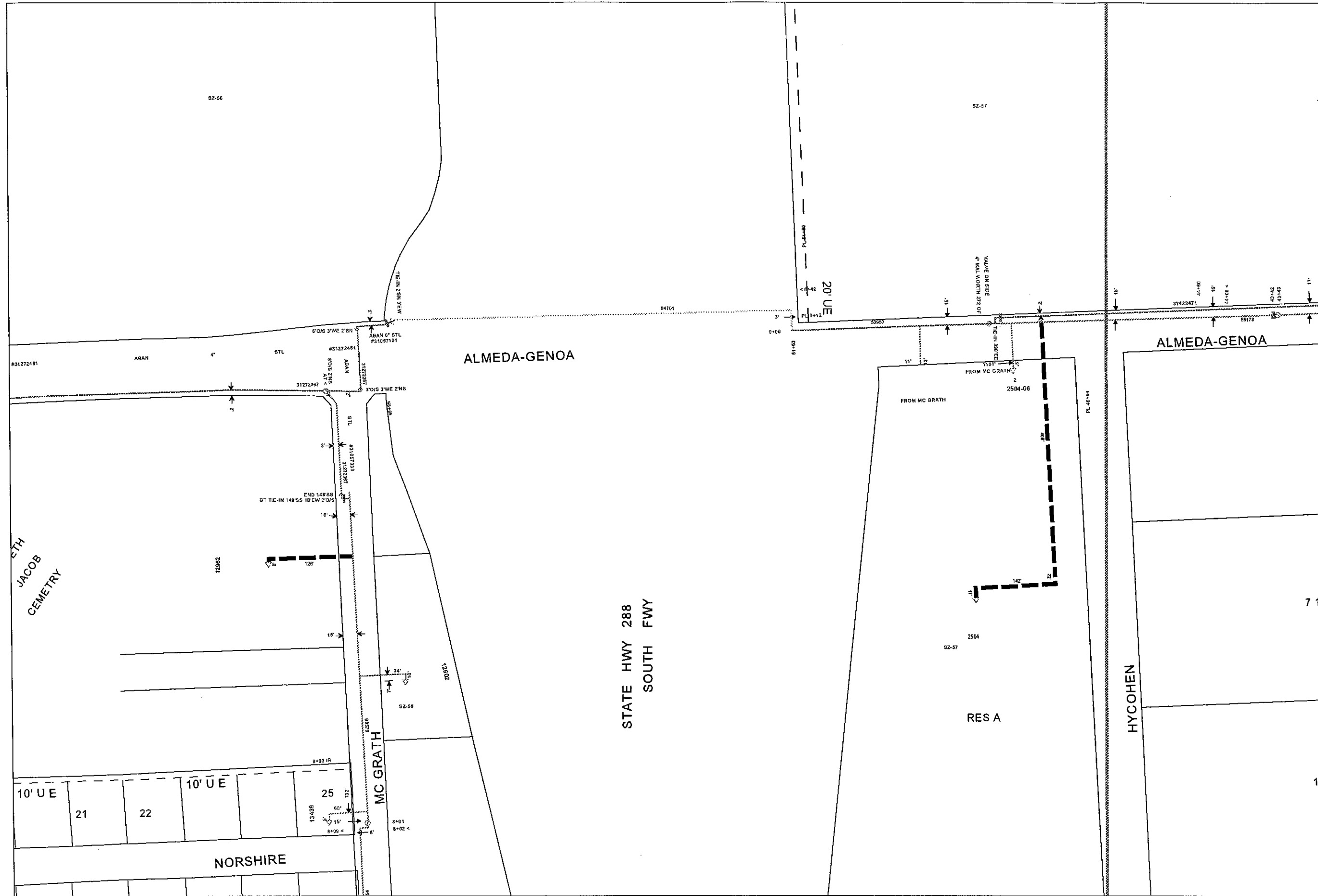
S. FACET:
F31470662

W. FACET:
F31440664

NOTES:

TOWN: In ViewPlaceName

THIS MAP SHOWS GAS FACILITIES IN APPROXIMATE LOCATIONS. CONTRACTORS AND ENGINEERS SHALL DETERMINE EXACT LOCATIONS BEFORE EXCAVATING. CONTRACTORS AND ENGINEERS ARE FULLY RESPONSIBLE FOR ANY DAMAGES TO GAS FACILITIES RESULTING FROM THEIR EXCAVATION.



F31470664



USER ID:
i220386

SCALE:
1" = 150'

DATE:
5/16/2013

N. FACET:
F31470666

E. FACET:
F31500664

S. FACET:
F31470662

W. FACET:
F31440664

NOTES:

TOWN: InViewPlaceName

10

7 11

THIS MAP SHOWS GAS FACILITIES IN APPROXIMATE LOCATIONS. CONTRACTORS AND ENGINEERS SHALL DETERMINE EXACT LOCATIONS BEFORE EXCAVATING. CONTRACTORS AND ENGINEERS ARE FULLY RESPONSIBLE FOR ANY DAMAGES TO GAS FACILITIES RESULTING FROM THEIR EXCAVATIONS.



CenterPoint Energy
Gas

F31470662

USER ID:
i220386

SCALE:
1" : 300'

DATE:
5/16/2013

N. FACET:
F31470664

E. FACET:
F31500662

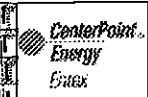
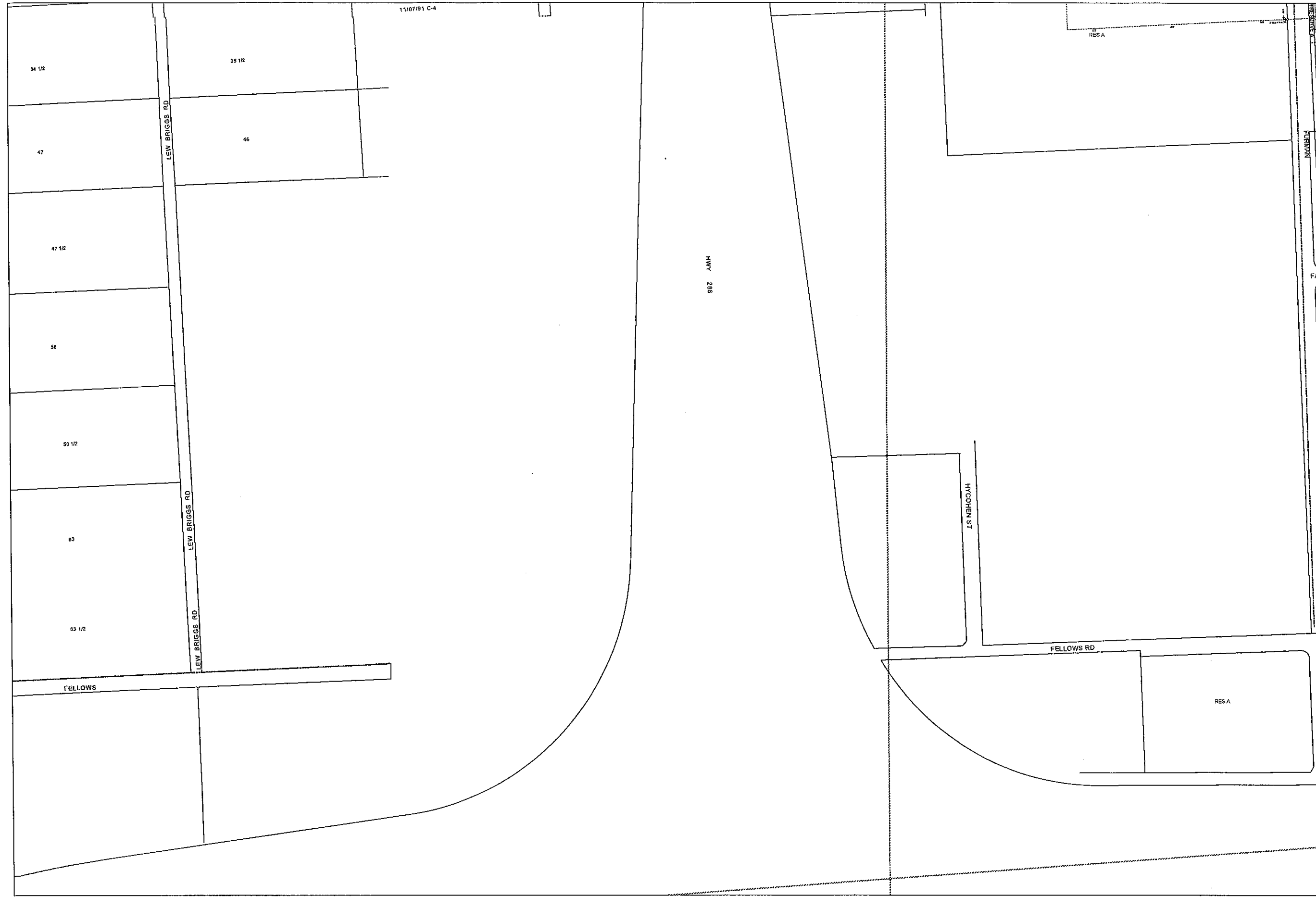
S. FACET:
F31470660

W. FACET:
F31440662

NOTES:

TOWN: In ViewPlaceName

THIS MAP SHOWS GAS FACILITIES IN APPROXIMATE LOCATIONS. CONTRACTORS AND ENGINEERS SHALL DETERMINE EXACT LOCATIONS BEFORE EXCAVATING. CONTRACTORS AND ENGINEERS ARE FULLY RESPONSIBLE FOR ANY DAMAGES TO GAS FACILITIES RESULTING FROM THEIR EXCAVATIONS.



F31470660



USER ID:
i220386

SCALE:
1" : 300'

DATE:
5/16/2013

N. FACET:
F31470662

E. FACET:
F31500660

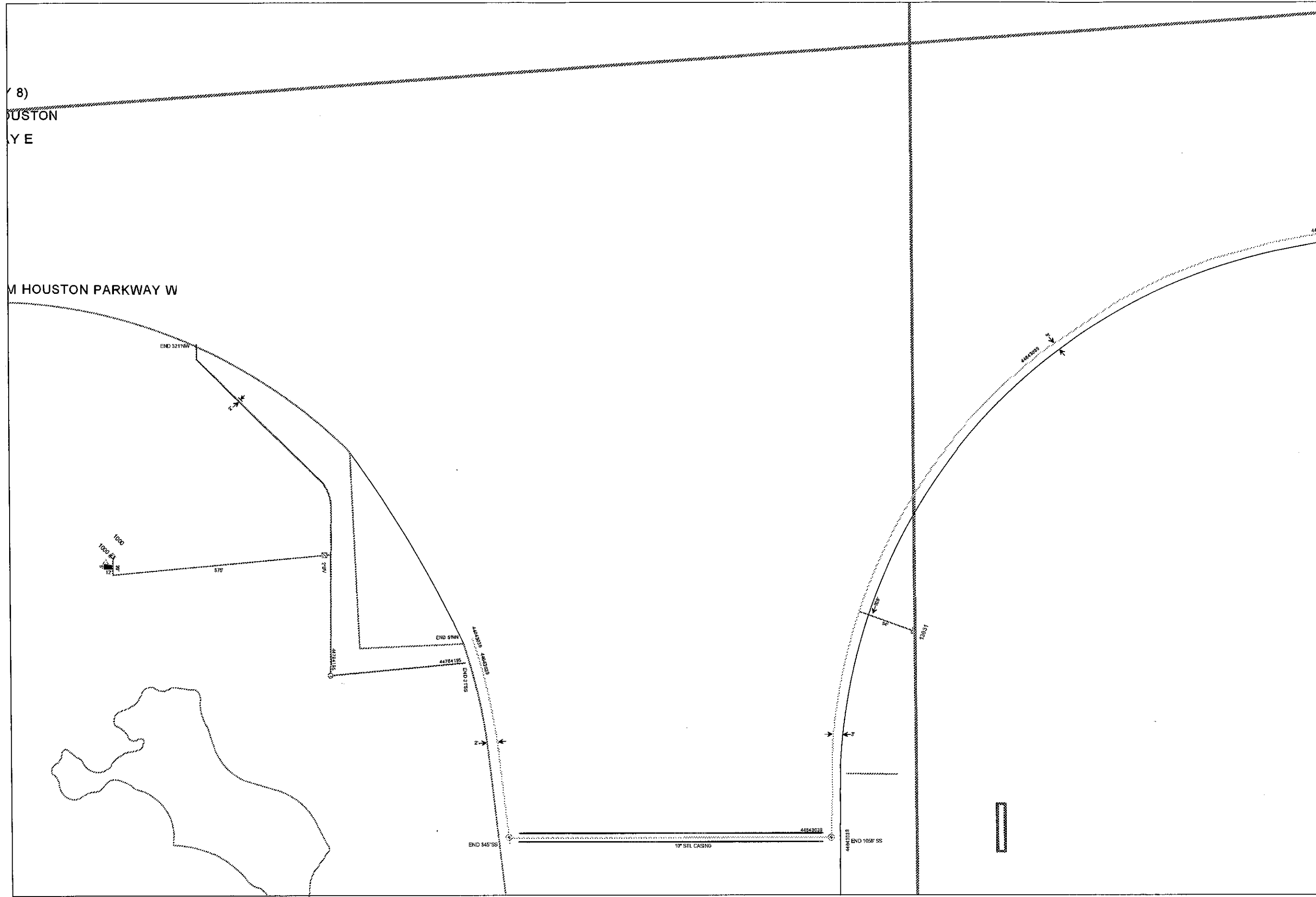
S. FACET:
F31470658

W. FACET:
F31440660

NOTES:

TOWN: In ViewPlaceName

THIS MAP SHOWS GAS FACILITIES IN APPROXIMATE LOCATIONS. CONTRACTORS AND ENGINEERS SHALL DETERMINE EXACT LOCATIONS BEFORE EXCAVATING. CONTRACTORS AND ENGINEERS ARE FULLY RESPONSIBLE FOR ANY DAMAGES TO GAS FACILITIES RESULTING FROM THEIR EXCAVATIONS.



8)
 USTON
 Y E

M HOUSTON PARKWAY W



F31470658



USER ID:
 i220386

SCALE:
 1" : 150'

DATE:
 5/16/2013

N. FACET:
 F31470660

E. FACET:
 F31500658

S. FACET:
 F31470656

W. FACET:
 F31440658

NOTES:

TOWN: InViewPlaceName

THIS MAP SHOWS GAS FACILITIES IN APPROXIMATE LOCATIONS. CONTRACTORS AND ENGINEERS SHALL DETERMINE EXACT LOCATIONS BEFORE EXCAVATING. CONTRACTORS AND ENGINEERS ARE FULLY RESPONSIBLE FOR ANY DAMAGES TO GAS FACILITIES RESULTING FROM THEIR EXCAVATIONS.



F31470658



USER ID:
i220386

SCALE:
1" = 300'

DATE:
5/16/2013

N. FACET:
F31470660

E. FACET:
F31500658

S. FACET:
F31470656

W. FACET:
F31440658

NOTES:

THIS MAP SHOWS GAS FACILITIES IN APPROXIMATE LOCATIONS. CONTRACTORS AND ENGINEERS SHALL DETERMINE EXACT LOCATIONS BEFORE EXCAVATING. CONTRACTORS AND ENGINEERS ARE FULLY RESPONSIBLE FOR ANY DAMAGES TO GAS FACILITIES RESULTING FROM THEIR EXCAVATIONS.

TOWN: In View Place Name



F31470656



USER ID:
i220386

SCALE:
1" : 300'

DATE:
5/16/2013

N. FACET:
F31470658

E. FACET:
F31500656

S. FACET:
F31470654

W. FACET:
F31440656

NOTES:

TOWNCOUNTRYPLACE

THIS MAP SHOWS GAS FACILITIES IN APPROXIMATE LOCATIONS. CONTRACTORS AND ENGINEERS SHALL DETERMINE EXACT LOCATIONS BEFORE EXCAVATING. CONTRACTORS AND ENGINEERS ARE FULLY RESPONSIBLE FOR ANY DAMAGES TO GAS FACILITIES RESULTING FROM THEIR EXCAVATIONS.



CenterPoint Energy Enx

F31470654



USER ID:
i220386

SCALE:
1" : 300'

DATE:
5/16/2013

N. FACET:
F31470656

E. FACET:
F31500654

S. FACET:
F31470652

W. FACET:
F31440654

NOTES:

TOWNCOUNTRY PLACE
THIS MAP SHOWS GAS FACILITIES IN APPROXIMATE LOCATIONS. CONTRACTORS AND ENGINEERS SHALL DETERMINE EXACT LOCATIONS BEFORE EXCAVATING. CONTRACTORS AND ENGINEERS ARE FULLY RESPONSIBLE FOR ANY DAMAGES TO GAS FACILITIES RESULTING FROM THEIR EXCAVATIONS.