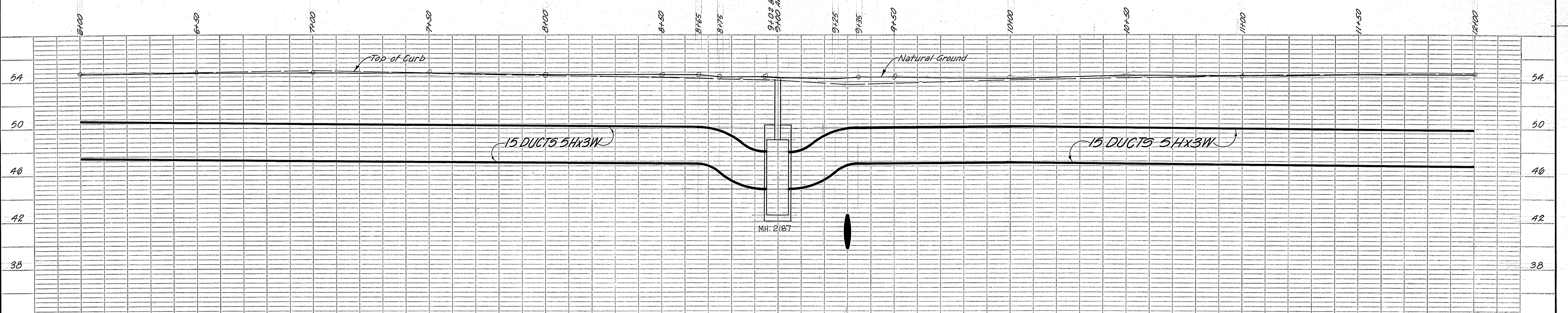
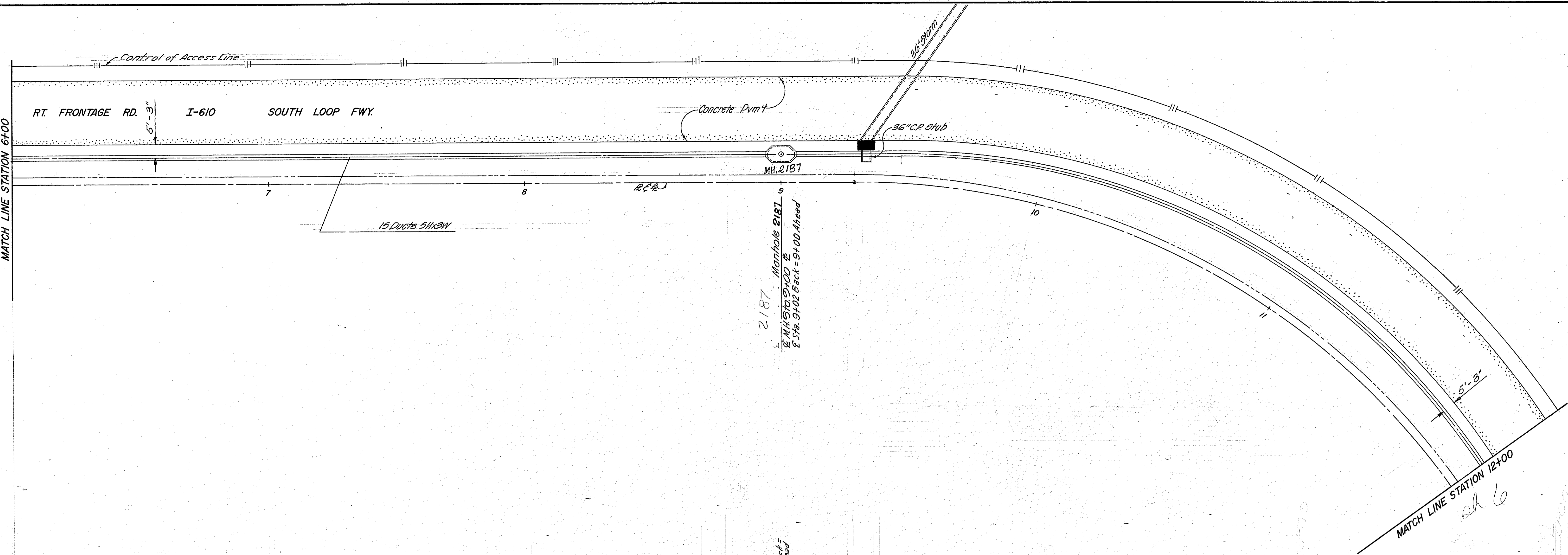
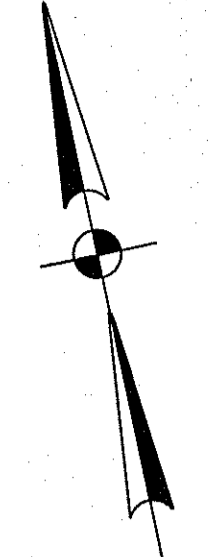


Bench Mark Elevation 54.33 - 1.78 in
Concrete 4.08 Ft. of B Sta. 5+83.

REVISED 9-26-69 NAT. GR. & ADDED TOPO

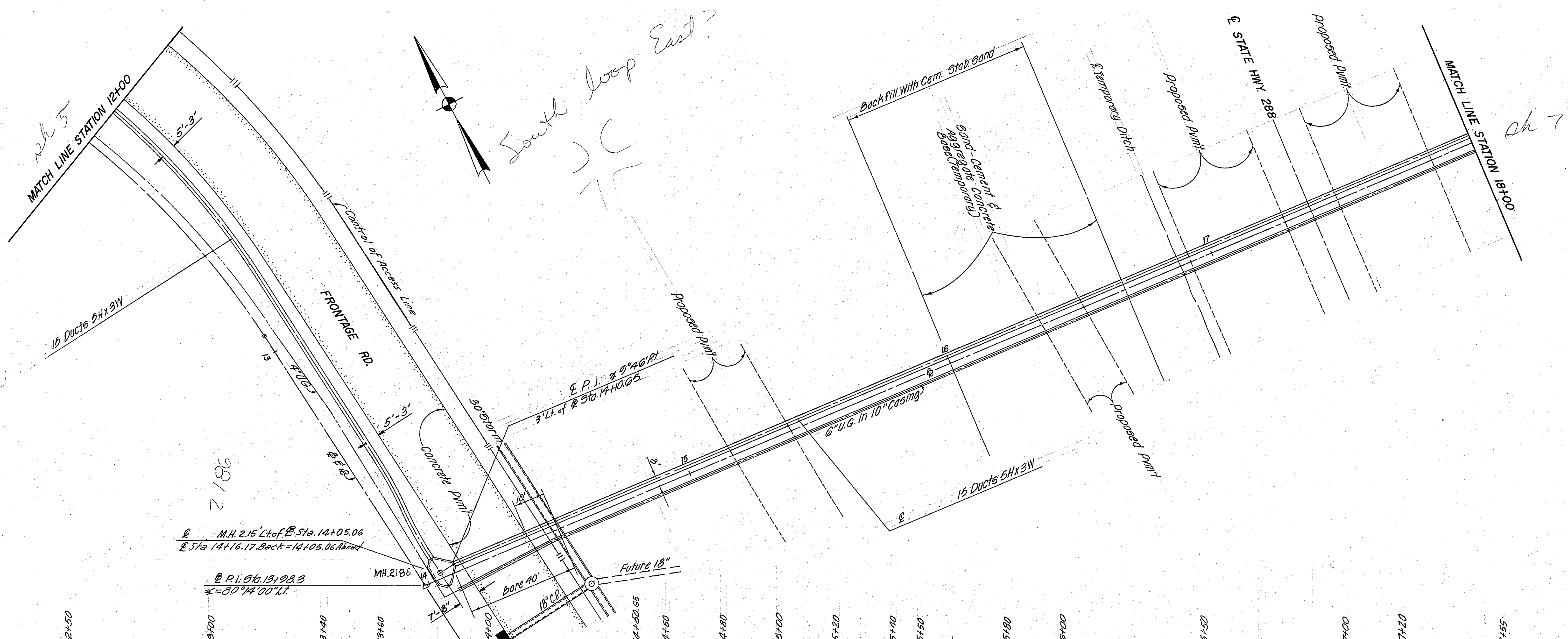
HOUSTON LIGHTING & POWER CO. ENGINEERING DEPARTMENT HOUSTON, TEXAS	
PLAN AND PROFILE OF UNDERGROUND CONDUIT HOLMES SUBSTATION I.H. 610 SOUTH LOOP FREEWAY	
APPROVED _____ DIRECTOR OF PUBLIC WORKS	DRAWN BY <u>L.E.K.</u> CHECKED BY <u>[Signature]</u> APPROVED <u>[Signature]</u> S.U.P.T. OF ENGINEERING DATE <u>2-20-68</u> SCALE <u>1"=4' VERT.</u> SHEET NO. 4 OF 11 SHEETS DWG. NO. 1065

ch 7
MATCH LINE STATION 6+00



REVISED 9-29-69 NAT. GR. PROFILE

HOUSTON LIGHTING & POWER CO. ENGINEERING DEPARTMENT HOUSTON, TEXAS	
PLAN AND PROFILE OF UNDERGROUND CONDUIT HOLMES SUBSTATION I.H. 610 SOUTH LOOP FREEWAY	
APPROVED SANITARY SEWER _____ STORM SEWER _____ PAVING DEPT. _____ DIRECTOR OF PUBLIC WORKS _____	DRAWN BY: L.E.K. CHECKED BY: <i>[Signature]</i> APPROVED: <i>[Signature]</i> Supt. of Engineering DATE: 2-20-68 SCALE: 1"=20' HOR. 1"=4' VERT. SHEET NO. 5 OF 11 SHEETS DWG. NO. 1065



NOTE: Bore on this sheet to consist of 34" I.D. 5/8" steel pipe with 15-4" Fiber Ducts filled with concrete.

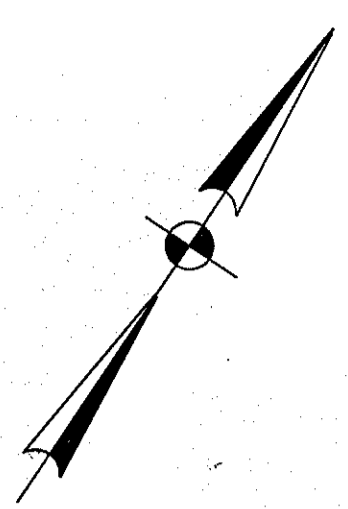
Bench Mark Elevation 54.24' cut on top of slab on E. of 25' slab 27.46' Lt. of E. Sta. 12+93.44.

REVISED 10-3-69 NAT. GR. PROFILE

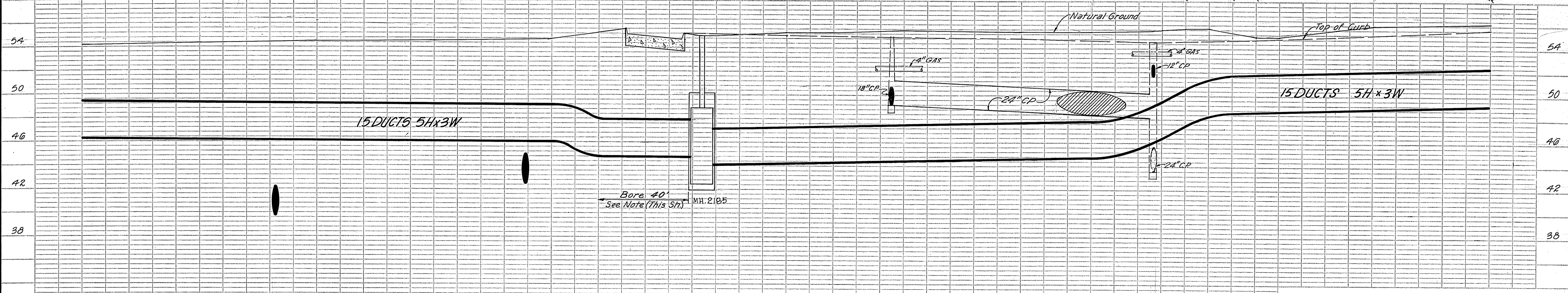
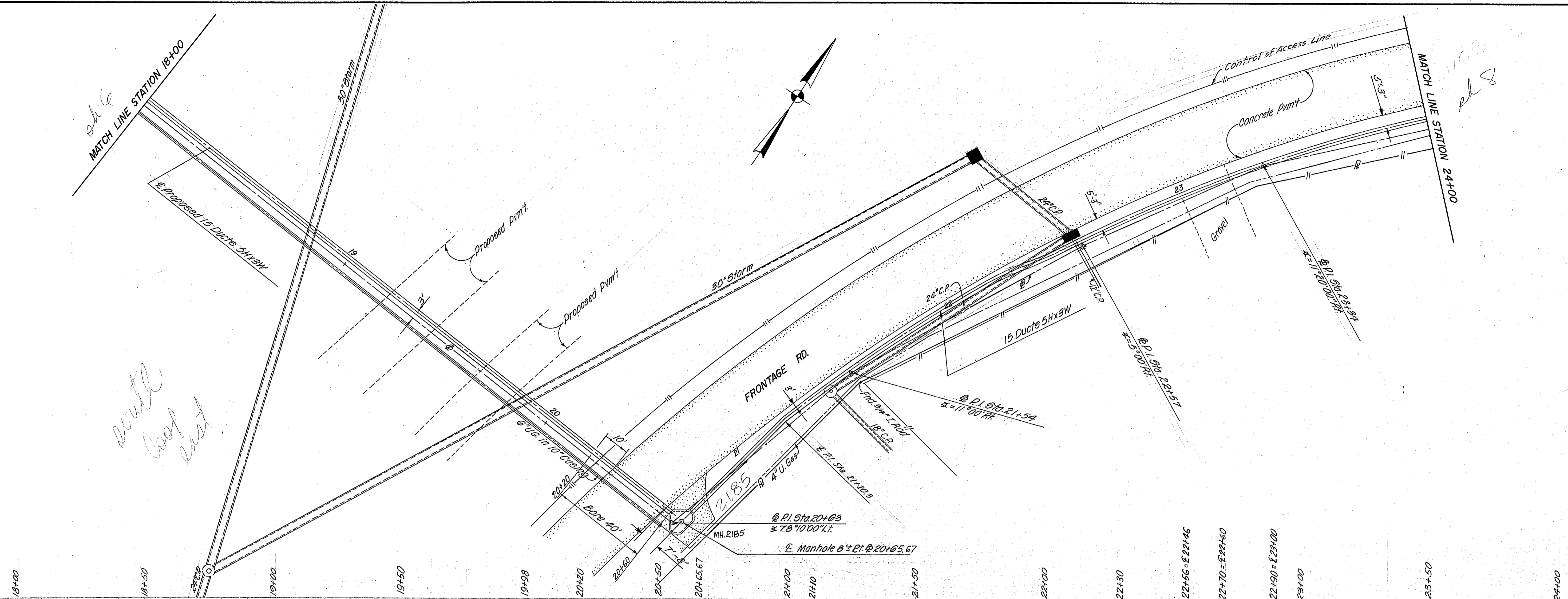
HOUSTON LIGHTING & POWER CO. ENGINEERING DEPARTMENT HOUSTON, TEXAS	
PLAN AND PROFILE OF UNDERGROUND CONDUIT HOLMES SUBSTATION I.H. 610 SOUTH LOOP FREEWAY	
APPROVED _____ DIRECTOR OF PUBLIC WORKS	DRAWN BY: L.E.K. CHECKED BY: <i>[Signature]</i> APPROVED: <i>[Signature]</i> S.U.P.T. OF ENGINEERING DATE: 2-20-68 SCALE: 1"=20' HOR. 1"=4' VERT. SHEET NO. 6 OF 11 SHEETS DWG. NO. 1065

sh 6
MATCH LINE STATION 18+00

200
el 8
MATCH LINE STATION 24+00



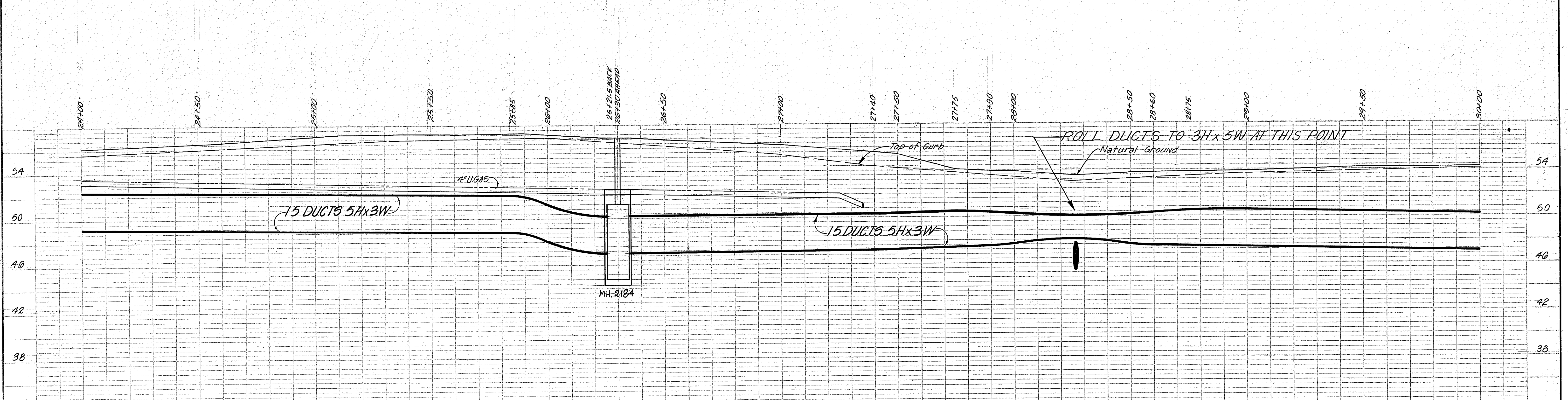
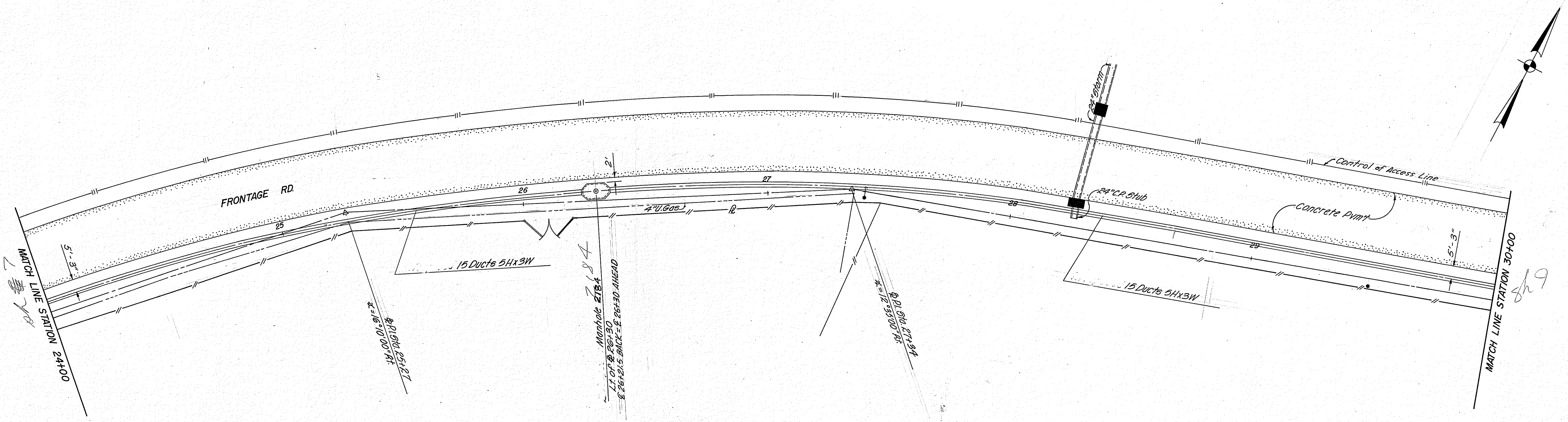
with
loop
cut



NOTE: Bores on this sheet to consist of 34" I.D. 5/8" steel pipe with 15-4" Fiber Ducts filled with concrete.

REVISED 10-3-69 NAT. GR. PROFILE

HOUSTON LIGHTING & POWER CO. ENGINEERING DEPARTMENT HOUSTON, TEXAS	
PLAN AND PROFILE OF UNDERGROUND CONDUIT HOLMES SUBSTATION I.H. 610 SOUTH LOOP FREEWAY	
APPROVED _____ DIRECTOR OF PUBLIC WORKS	DRAWN BY: L.E.K. CHECKED BY: <i>[Signature]</i> APPROVED: <i>[Signature]</i> S.U.P.T. OF ENGINEERING DATE: 2-20-68 SCALE: 1"=20' HOR. 1"=4' VERT. SHEET NO. 7 OF 11 SHEETS DWG. NO. 1065



Bench Mark Elevation 56.34 (Marked 56.45)
 R.R. Spike W. Base of P.P. at E. 27+40

REVISED 10-3-69 NAT. GR. PROFILE

HOUSTON LIGHTING & POWER CO. ENGINEERING DEPARTMENT HOUSTON, TEXAS	
PLAN AND PROFILE OF UNDERGROUND CONDUIT HOLMES SUBSTATION I.H. 610 SOUTH LOOP FREEWAY	
APPROVED DIRECTOR OF PUBLIC WORKS	DRAWN BY: L.E.K. CHECKED BY: <i>[Signature]</i> APPROVED: <i>[Signature]</i> SUPT. OF ENGINEERING DATE: 2-20-68 SCALE: 1"=4' VERT. SHEET NO. 8 OF 11 SHEETS DWG. NO. 1065