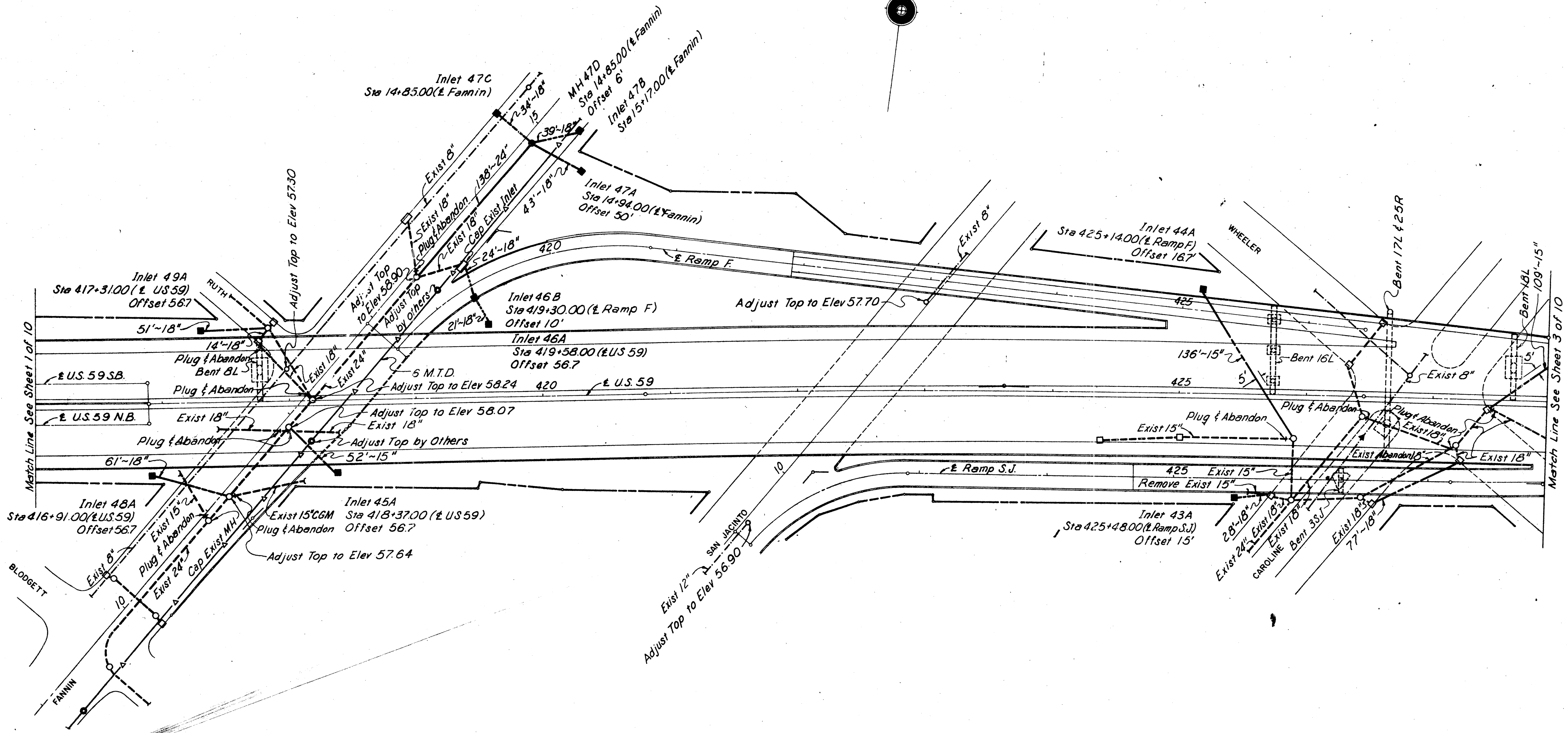


Note: For details showing conversion of Exist Inlet to Manhole, see "Storm Sewer Manholes" sheet 2 of 2.

Note: Offsets for Curb Inlets are to face of Curb.
 Offsets for Area Inlets or Manholes are to Center.

TEXAS HIGHWAY DEPARTMENT HOUSTON URBAN PROJECT									
SEWER PLAN									
SHEET 1 OF 10									
Dr. JAN	DRAWING	DATE	FED ROAD DIV NO	STATE	FEDERAL AID PROJECT NO	SHEET NO			
Ck. Dw. HWJ			6	TEXAS	U 514 (65)	172			
Ck. Dw. NWWJ			STATE DIST NO	COUNTY	SECTION NO	SECTION NO	SECTION NO	SECTION NO	SECTION NO
			12	Harris	27	13	32	U.S. 59	

16348



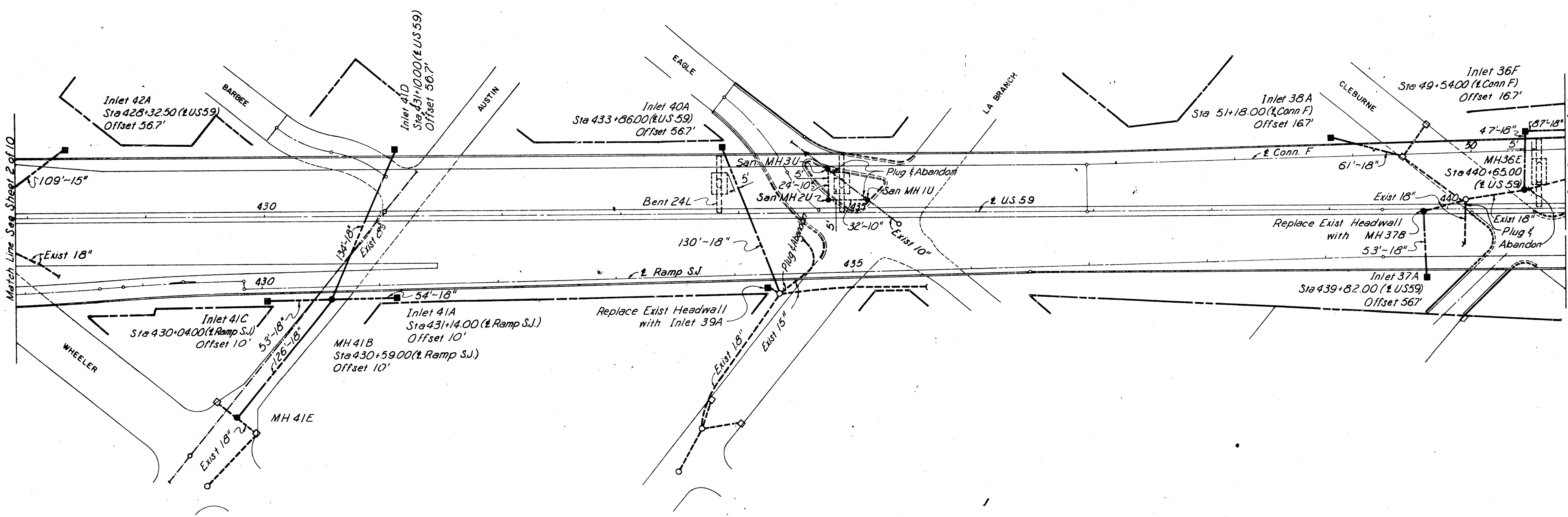
**TEXAS HIGHWAY DEPARTMENT
HOUSTON URBAN PROJECT**

SEWER PLAN

SHEET 2 OF 10

Dn	JAN	Drawing	DATE	FED ROAD DIST NO	STATE	FEDERAL AID PROJECT NO	SHEET NO
Ck	DH			5	TEXAS	U 514 (65)	173
Dw	MWJ						
Ck	Dw	MWJ		STATE DIST NO	COUNTY	SECTION NO	SECTION NO
				12	Harris	27 13 52	U.S. 59

16348

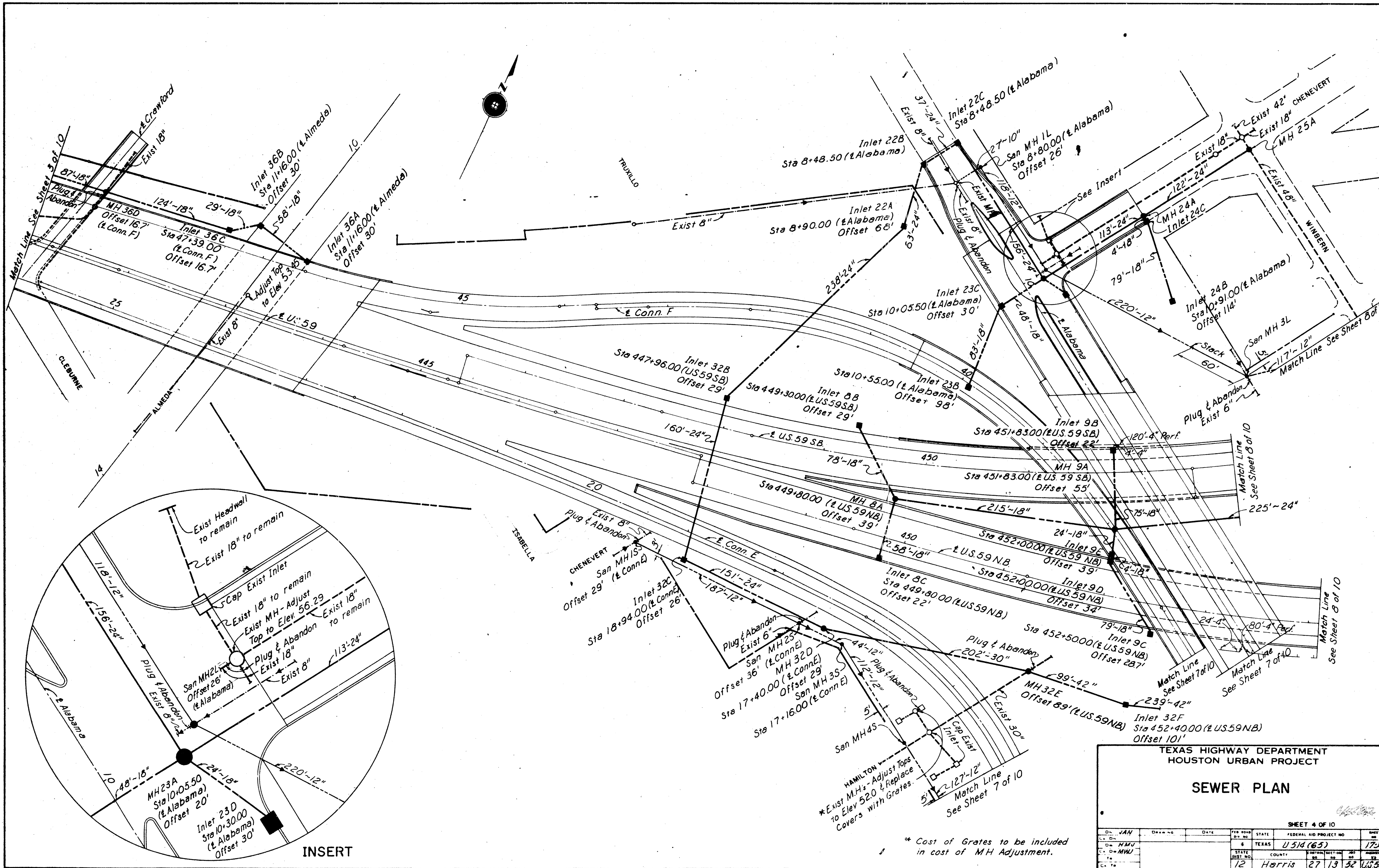


Match Line See Sheet 2 of 10

Match Line See Sheet 4 of 10

TEXAS HIGHWAY DEPARTMENT HOUSTON URBAN PROJECT									
SEWER PLAN									
SHEET 3 OF 10									
Dr.	JAN	DRAWING	DATE	PER ROAD	STATE	FEDERAL AID PROJECT NO.	SHEET		
Ch. Dr.	HMJ			BY NO.	6	TEXAS 0514 (65)	174		
Ch. Dr.	MWJ								
Ch. Dr.					12	Harris	27	13	52
									0359

16345



INSERT

TEXAS HIGHWAY DEPARTMENT
HOUSTON URBAN PROJECT

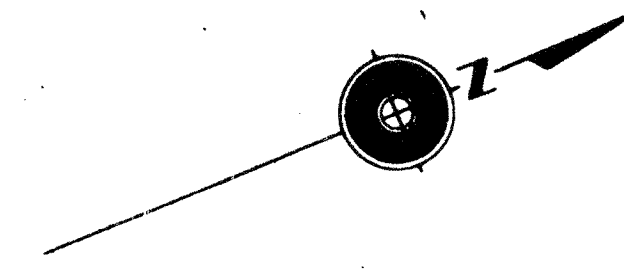
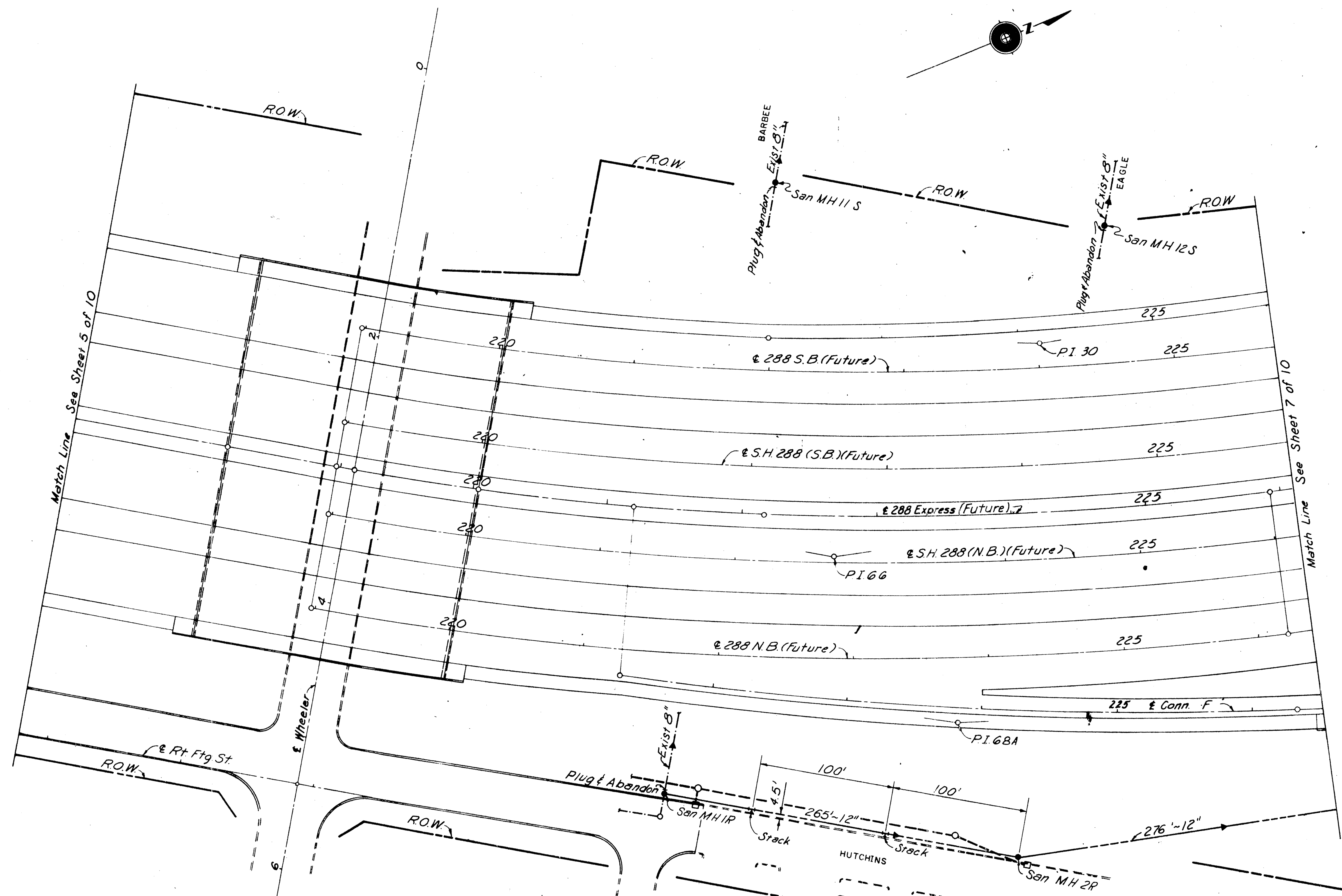
SEWER PLAN

SHEET 4 OF 10

DR. JAN	DRAWING	DATE	FED. ROAD	STATE	FEDERAL AID PROJECT NO.	SHEET
12			12	TEXAS	U 514 (65)	175
12				Harris	27 13 52	U 514

* Cost of Grates to be included in cost of MH Adjustment.

16345



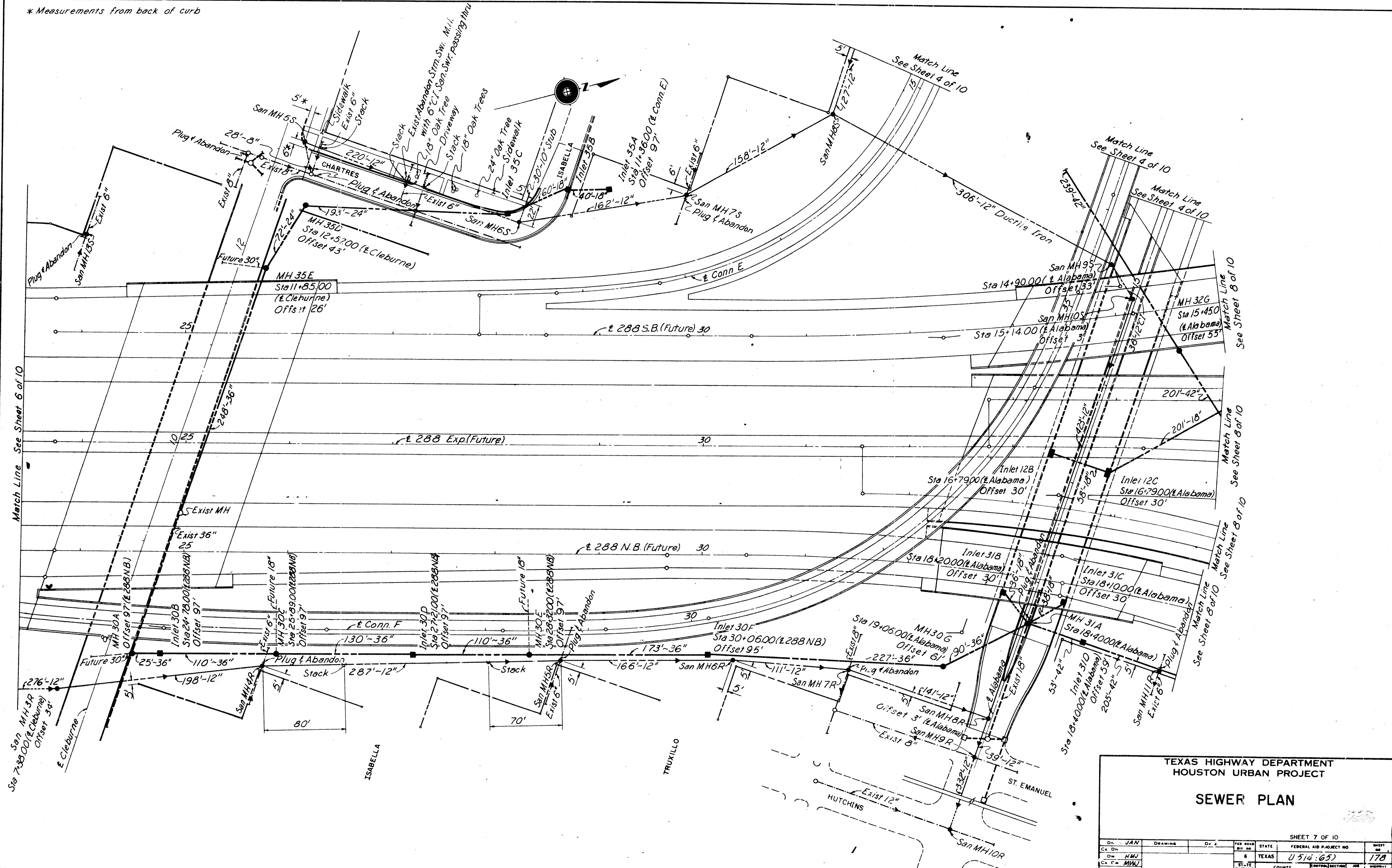
Match Line See Sheet 5 of 10

Match Line See Sheet 7 of 10

TEXAS HIGHWAY DEPARTMENT HOUSTON URBAN PROJECT									
SEWER PLAN									
SHEET 6 OF 10									
Dr.	JAN	DATE	FED. ROAD DIST. NO.	STATE	FEDERAL AID PROJECT NO.	SHEET NO.			
Dr.	HMJ		6	TEXAS	U 514 (65)	177			
Ch. Dr.	MWJ		STATE DIST. NO.	COUNTY	CONTROL SECTION NO.	JOB NO.	HIGHWAY NO.		
			12	Harris	27 13 52	US 59			

16348

* Measurements from back of curb



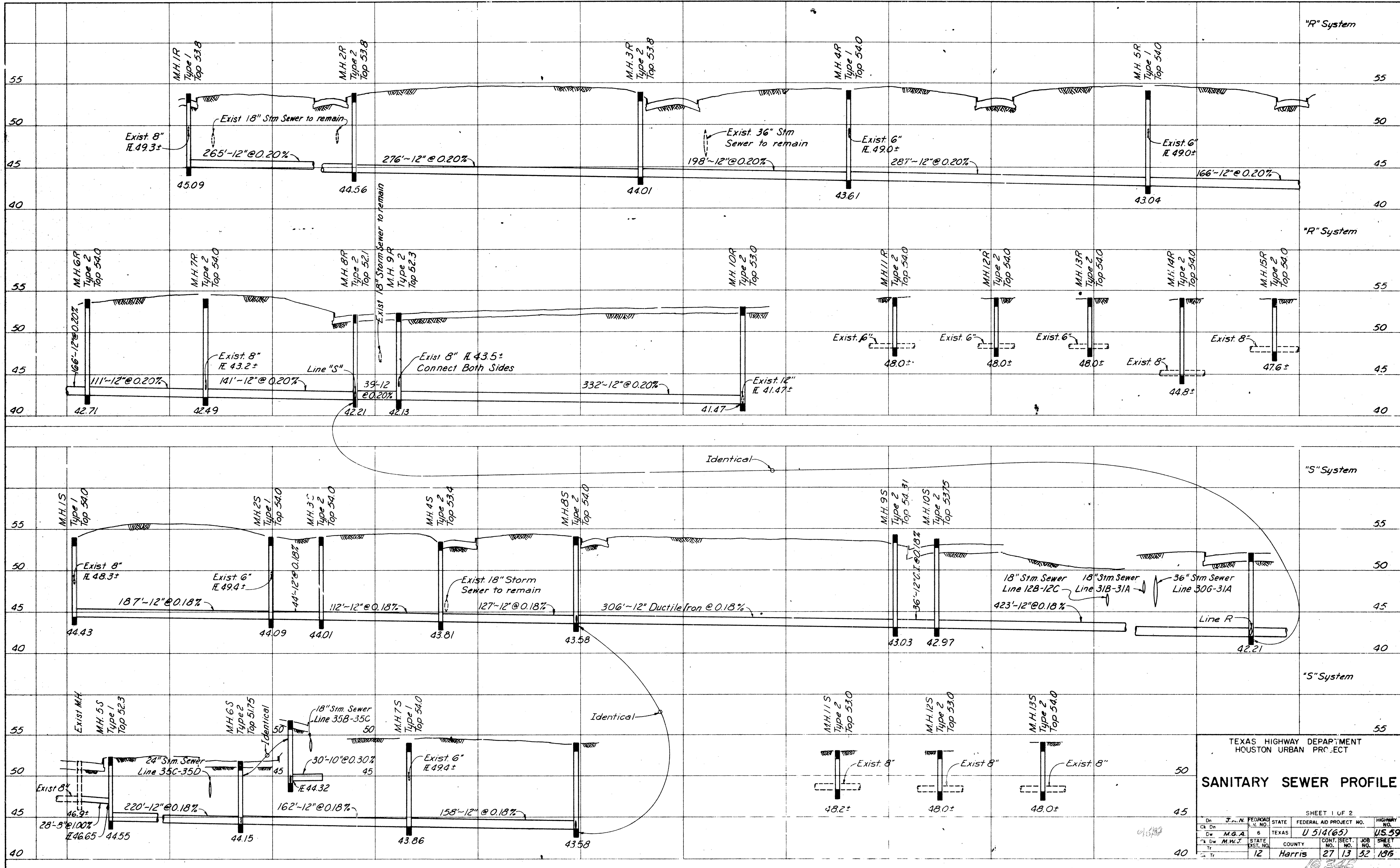
TEXAS HIGHWAY DEPARTMENT
HOUSTON URBAN PROJECT

SEWER PLAN

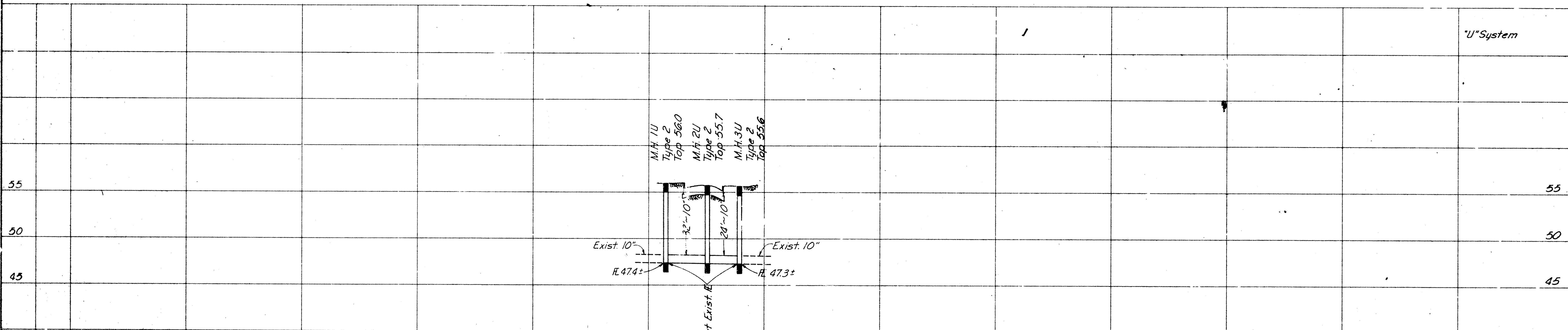
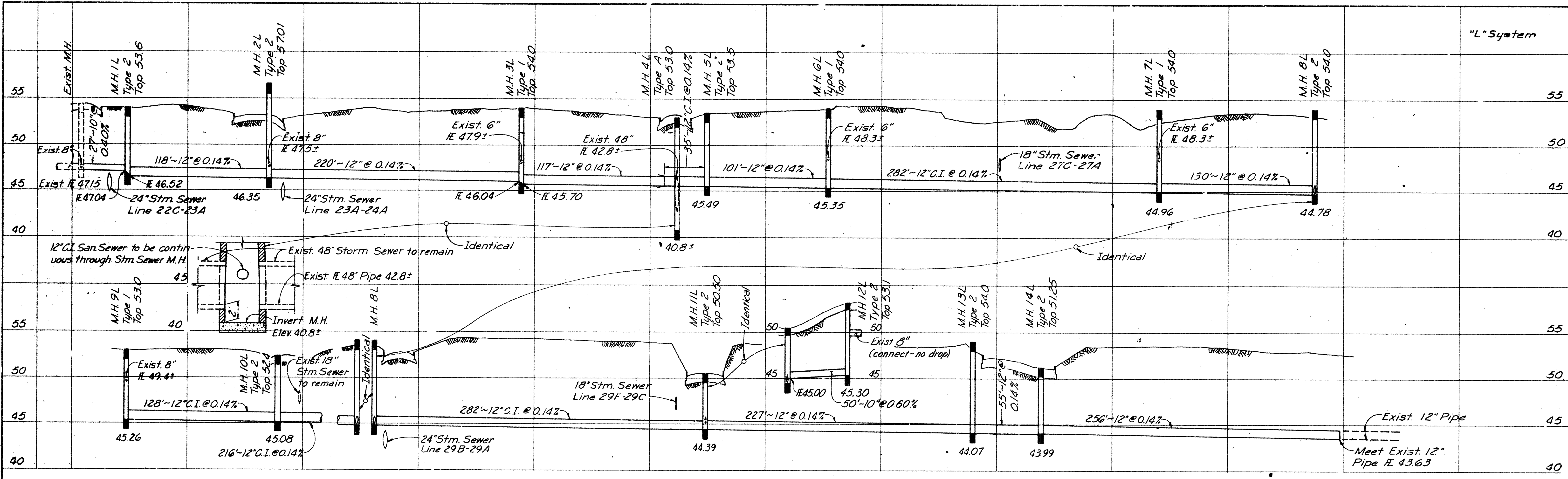
SHEET 7 OF 10

Dn. - JAN	DRAWING	D. 4	PER HOUR	STATE	FEDERAL AID PROJECT NO.	SHEET NO.
Ch. Dn.				6	TEXAS	
Dw. HAW					U 514 (65)	178
Ch. E. W. MWL						
Tr.						
Ch. Tr.				12	Harris	27 13 32 US 59

16346



TEXAS HIGHWAY DEPARTMENT HOUSTON URBAN PROJECT									
SANITARY SEWER PROFILE									
SHEET 1 OF 2									
Dr.	J.N.N.	FED. ROAD	STATE	FEDERAL AID PROJECT NO.	HIGHWAY NO.				
Ch. En.	M.G.A.	6	TEXAS	U 514(65)	US 59				
Ch. D.	M.W.J.	STATE	COUNTY	CONT. SECT. NO.	JOB NO.	SHEET NO.			
Tr.		12	Harris	27	13	52	186		

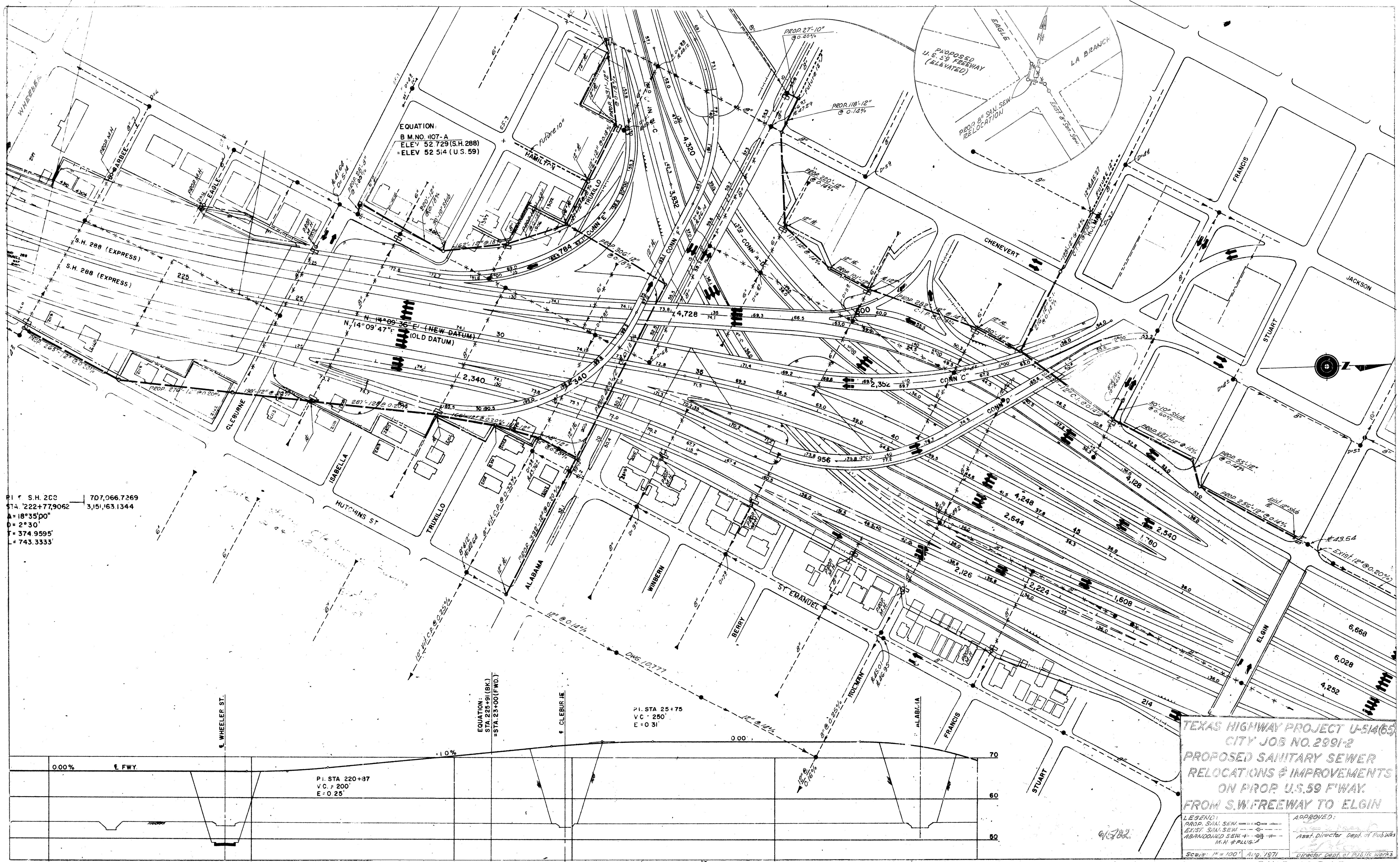


TEXAS HIGHWAY DEPARTMENT
HOUSTON URBAN PROJECT

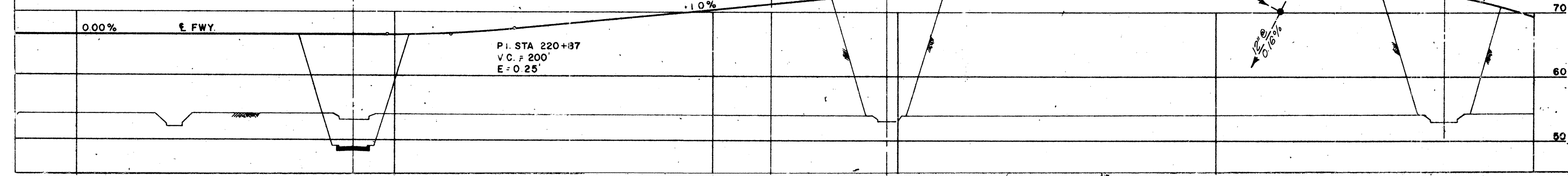
SANITARY SEWER PROFILE

SHEET 2 OF 2

DR. J.A.N.	FED. ROAD DIST. NO. 6	STATE TEXAS	FEDERAL AID PROJECT NO. U 514 (65)	HIGHWAY NO. 1559
CITY M.G.A.	COUNTY HARRIS	DATE 12	NO. 27	SHEET NO. 52
DR. M.W.J.	NO. 12	NO. 27	NO. 12	NO. 52
NO. 12	HARRIS	27	12	52



P.I. S.H. 288 707,066.7269
 STA. 222+77.9062 3,151,163.1344
 A = 18°35'00"
 D = 2°30'
 T = 374.9595'
 L = 743.3333'



TEXAS HIGHWAY PROJECT U-514(65)
CITY JOB NO. 2991-2
PROPOSED SANITARY SEWER
RELOCATIONS & IMPROVEMENTS
ON PROP. U.S. 59 F.WAY.
FROM S.W. FREEWAY TO ELGIN

LEGEND:
 PROP. SAN. SEW. ————
 EXIST. SAN. SEW. - - - -
 ABANDONED SEW. + + + +
 M.H. & PLUG. A

APPROVED:
 Asst. Director Dept. of Pub. Works
 Director, Dept. of Public Works

Scale: 1" = 100' Aug. 1971
 DWG. 16348

SEE PLAN FOR APPROX. ELEVATIONS IN INTERCHANGE.