

CITY OF HOUSTON, TEXAS  
DEPARTMENT OF PUBLIC WORKS  
PLANS FOR

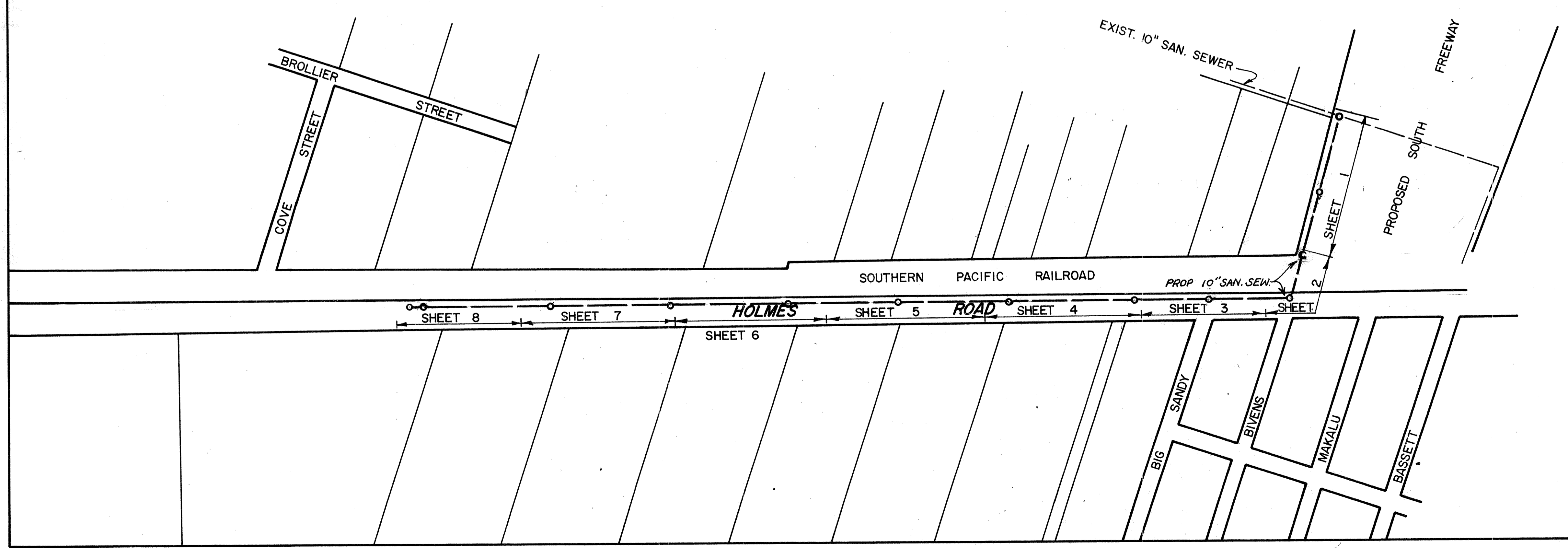
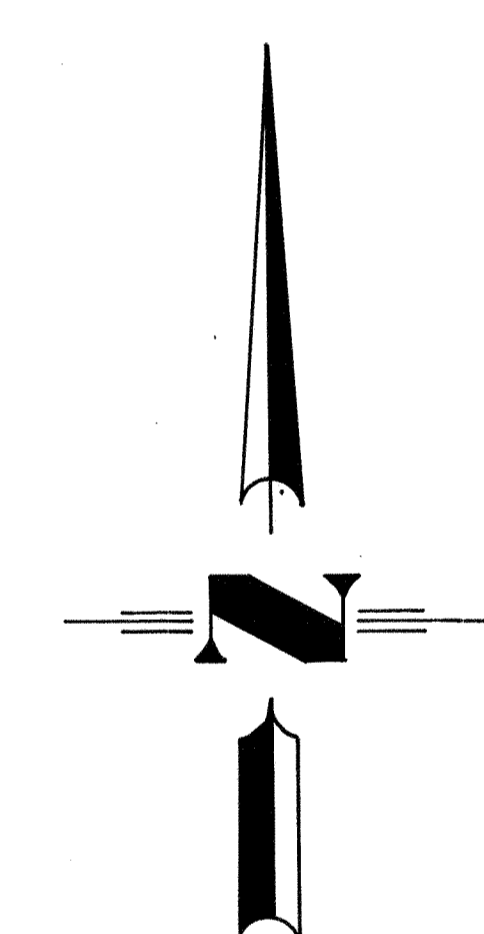
PROPOSED SANITARY SEWER

*HOLMES ROAD*

*JOB NO. 3400*

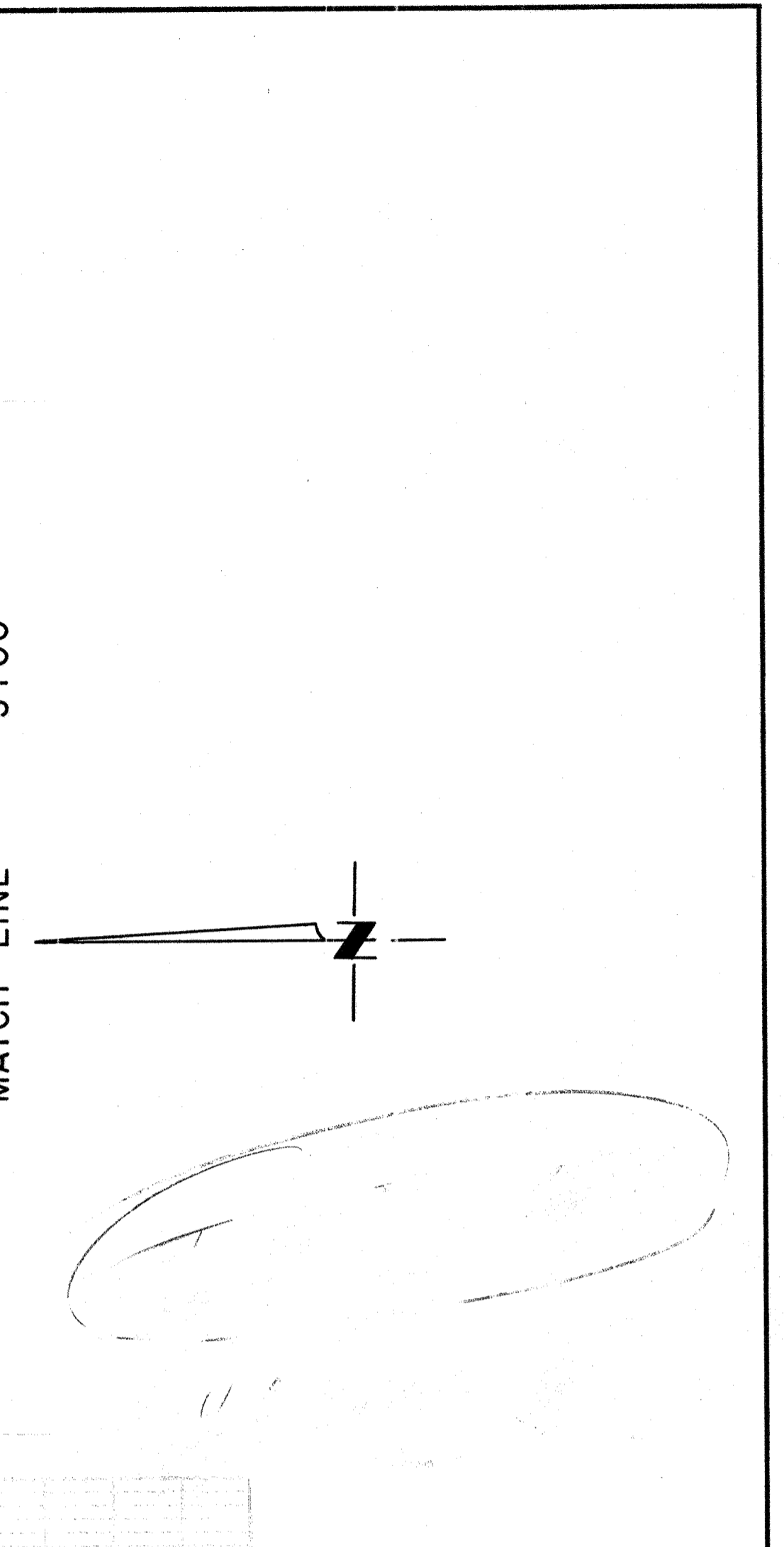
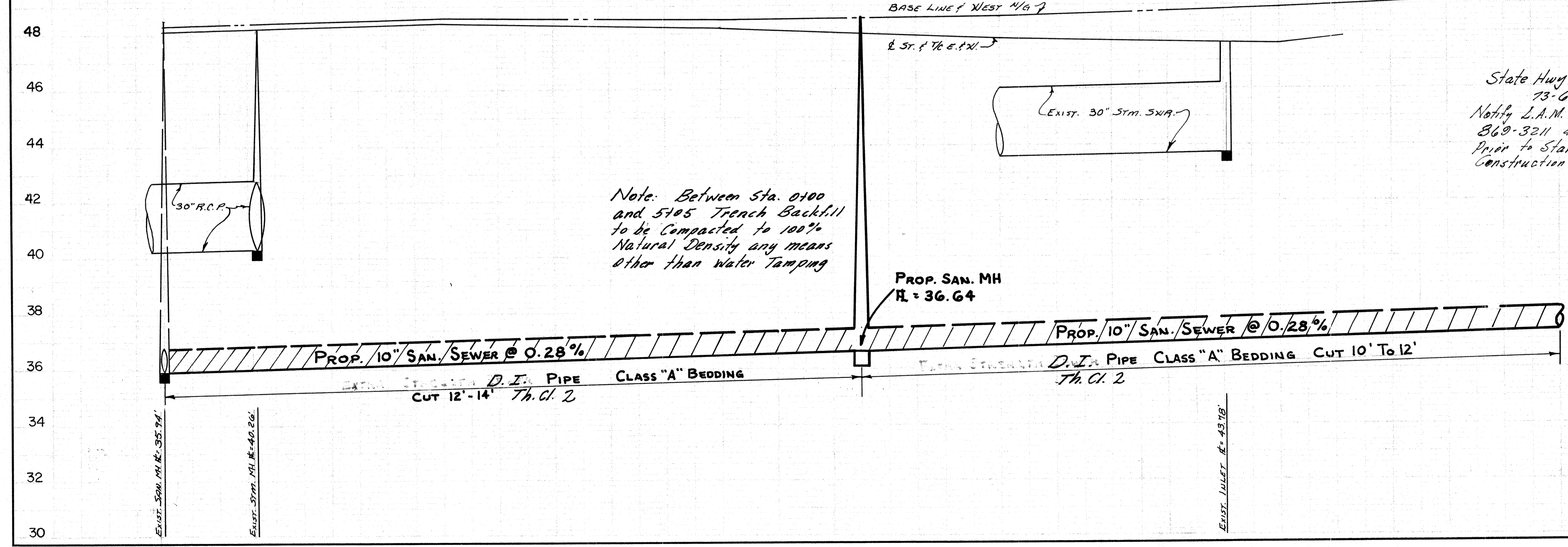
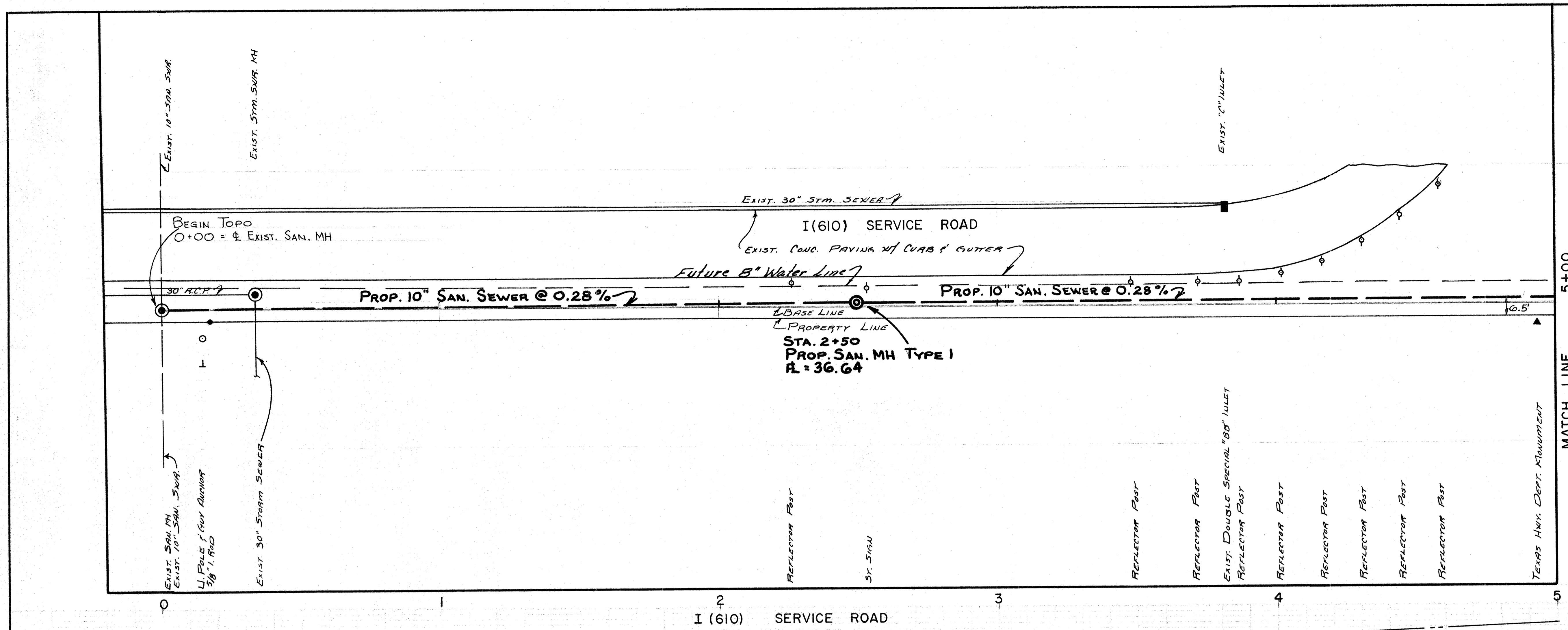
CHARLES R. HAILE ASSOCIATES, INC.  
CONSULTING ENGINEERS  
HOUSTON, TEXAS

*See Notes on  
Various Sheets  
RE: T.H.D. & F.C.D.  
Applicable to  
Proposed Road*



*E. B. Cape*  
**E. B. CAPE**  
DIRECTOR OF PUBLIC WORKS  
DATE: *July 26, 1973*

18127



B.M. ELEV. 49.36'

TEXAS HWY. DEPARTMENT  
MONUMENT. STA. 4+93.

Approved: *W.V. Ward*  
W.V. Ward  
Engr. - Mgr.  
Texas Hwy. Dept.  
7-23-73

State Hwy Permit  
73-6565  
Notified L.A.M. Bannette  
869-3211 48 Hrs.  
Prior to Start of  
Construction

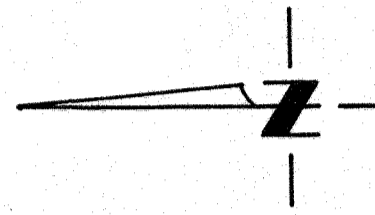
PROPOSED  
SANITARY SEWER  
ON HOLMES ROAD  
FROM  
SOUTH FREEWAY  
2800 FEET WEST  
JOB NO. 3400

CITY OF HOUSTON DEPARTMENT OF PUBLIC WORKS	
APPROVALS	
DESIGNED BY: <i>David Walden</i>	SANITARY SEWER
DRAWN BY: <i>R.W.L.</i>	WATER DEPT.
BRIDGE ENGINEER: <i>R. Williams</i>	TRAFFIC & TRANSPORTATION
CITY SURVEYOR: <i>R. Williams</i>	DIRECTOR OF PUBLIC WORKS
ASST. DIRECTOR OF PUBLIC WORKS: <i>R. Williams</i>	
SUBMITTED: <i>Feb 23 1973</i>	DESIGNED BY: <i>R.W.L.</i>
SCALE: 1"=20' HORIZ., 1"=2' VERT.	DRAWN BY: <i>R.W.L.</i>
DATE: FEB. 1973	SHEET NO. 1 OF 8 SHEETS
SURV. BY:	DWG. NO.
P. N. NO.:	

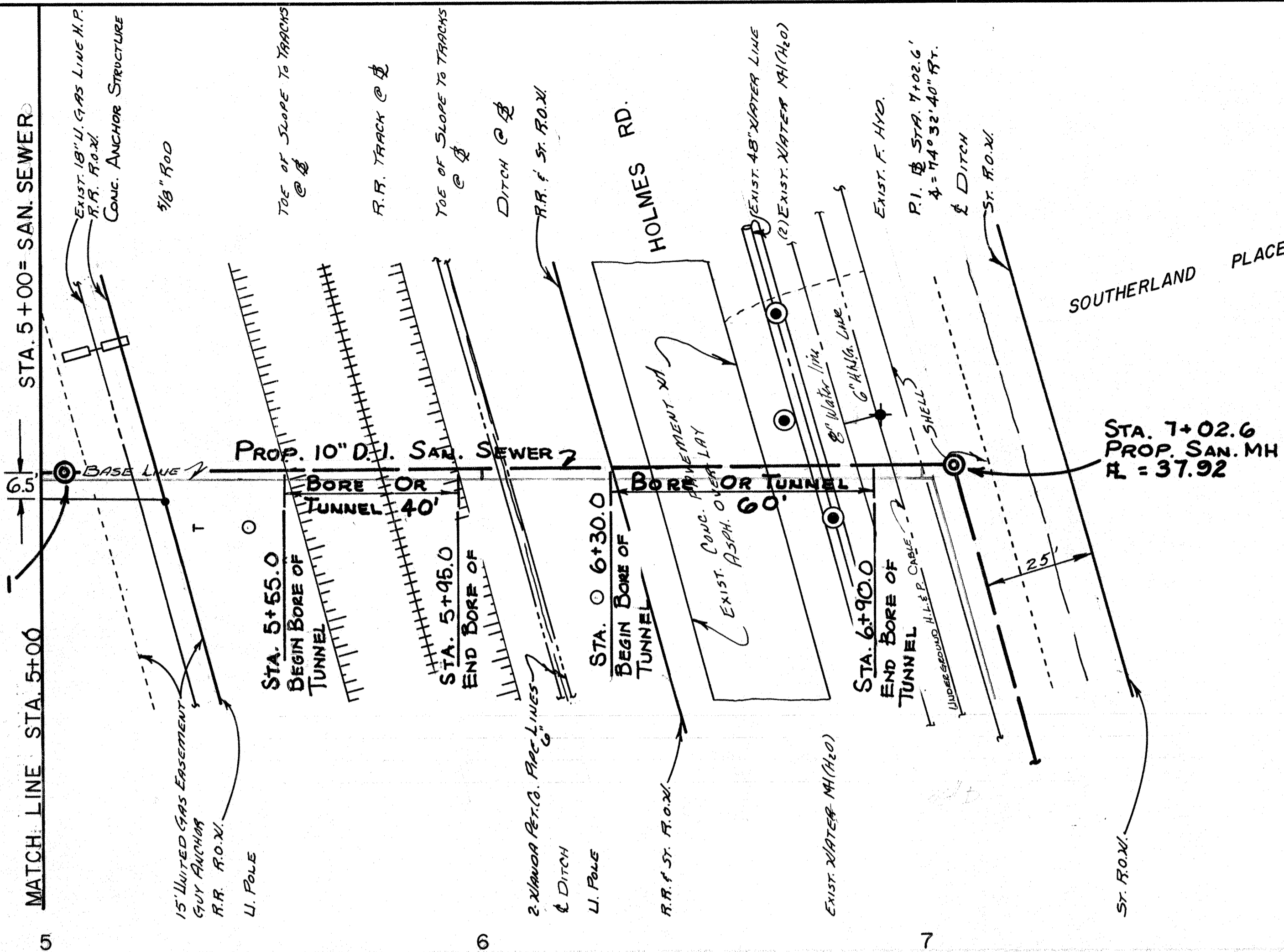
18127

NOTE: 48 HOURS PRIOR TO DIGGING IN VICINITY OF 18" HIGH PRESSURE UNITED GAS PIPELINE CALL MR. P.W. BRIGHTWELL AT 479-1234

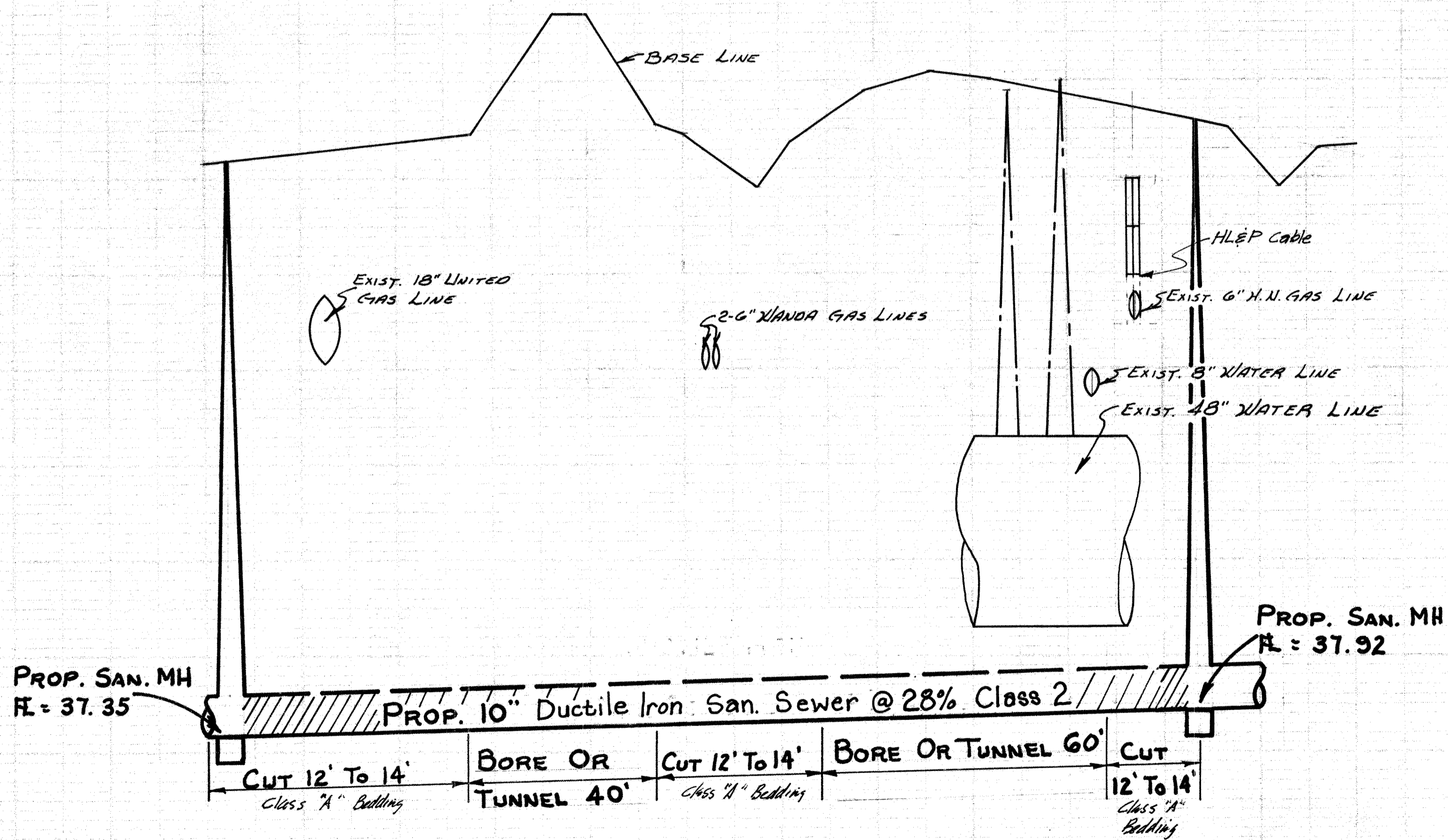
CONTRACTOR SHALL NOTIFY WANDA PETROLEUM CO. 48 HOURS PRIOR TO CROSSING G" PIPELINES.



STA 5+05  
PROP. SAN. MH TYPE I  
R = 37.35



51  
49  
47  
45  
43  
41  
39  
37  
35  
33



Approved: *W. G. Lamb*  
ASST. FLUO CONTROL ENGINEER  
DATE: 7/23/73

B.M. ELEV. 49.36'

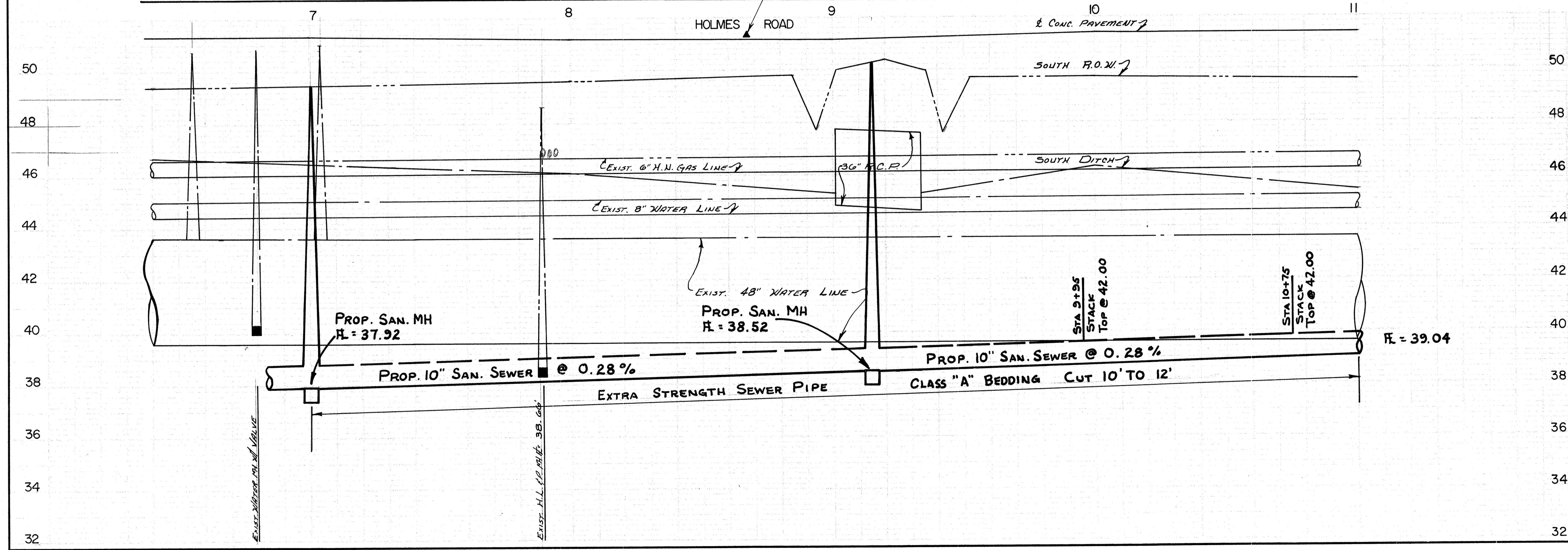
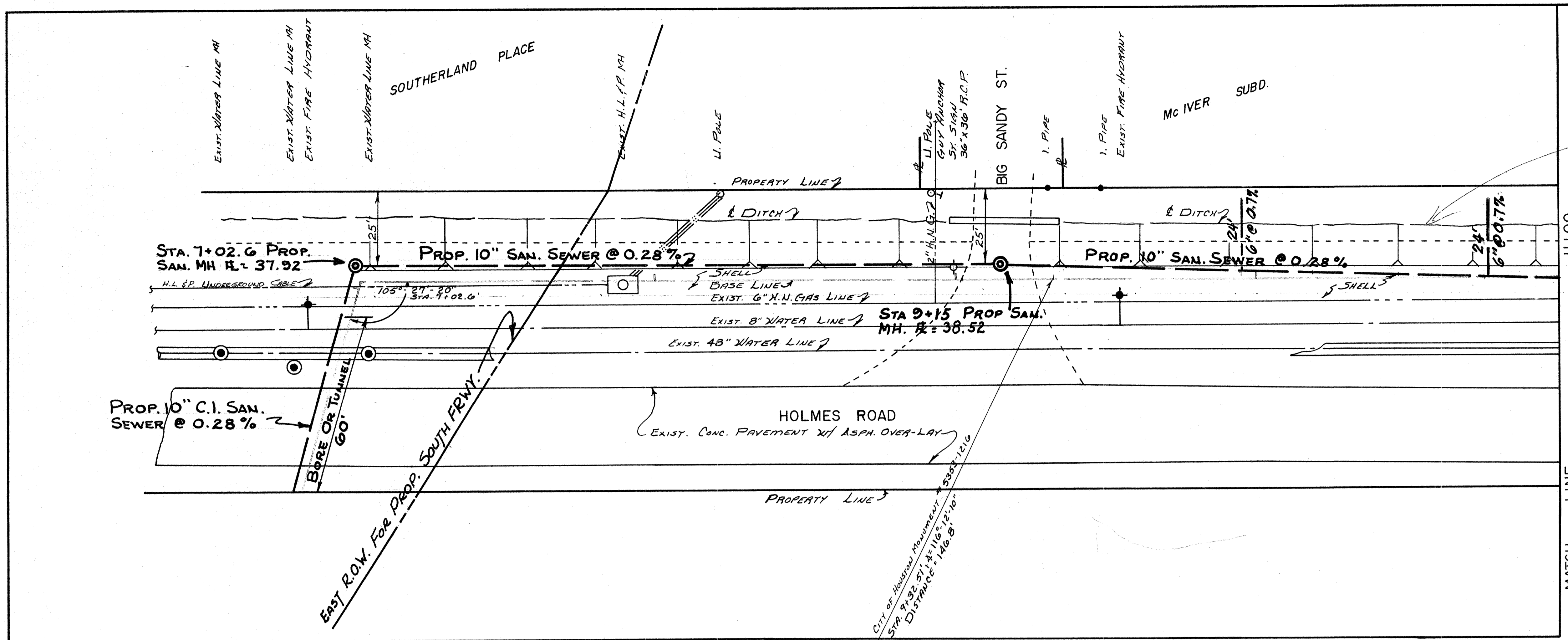
TEXAS HWY. DEPARTMENT  
MONUMENT. STA. 4+93.

Approved: *W. V. Ward*  
W. V. Ward  
Engr. - Mgr.  
Texas Hwy. Dept.  
7-23-73

PROPOSED  
SANITARY SEWER  
ON HOLMES ROAD  
FROM  
SOUTH FREEWAY  
2800 FEET WEST  
JOB NO. 3400

CITY OF HOUSTON DEPARTMENT OF PUBLIC WORKS	
APPROVALS	
STREET ENGINEER	WATER DEPT.
CITY SURVEYOR	TRAFFIC & TRANSPORTATION
ASST. DIRECTOR OF PUBLIC WORKS	DIRECTOR OF PUBLIC WORKS
SUBMITTED: DATE: FEB. 1973	DESIGNED BY: DRAWN BY: R.W.L.
SURV. BY:	SHEET NO. 2 OF 8 SHEETS
P. B. NO.:	DWG. NO.:

W. W. RECORDS  
MICROFILM  
DATE: 12/1/82  
18127



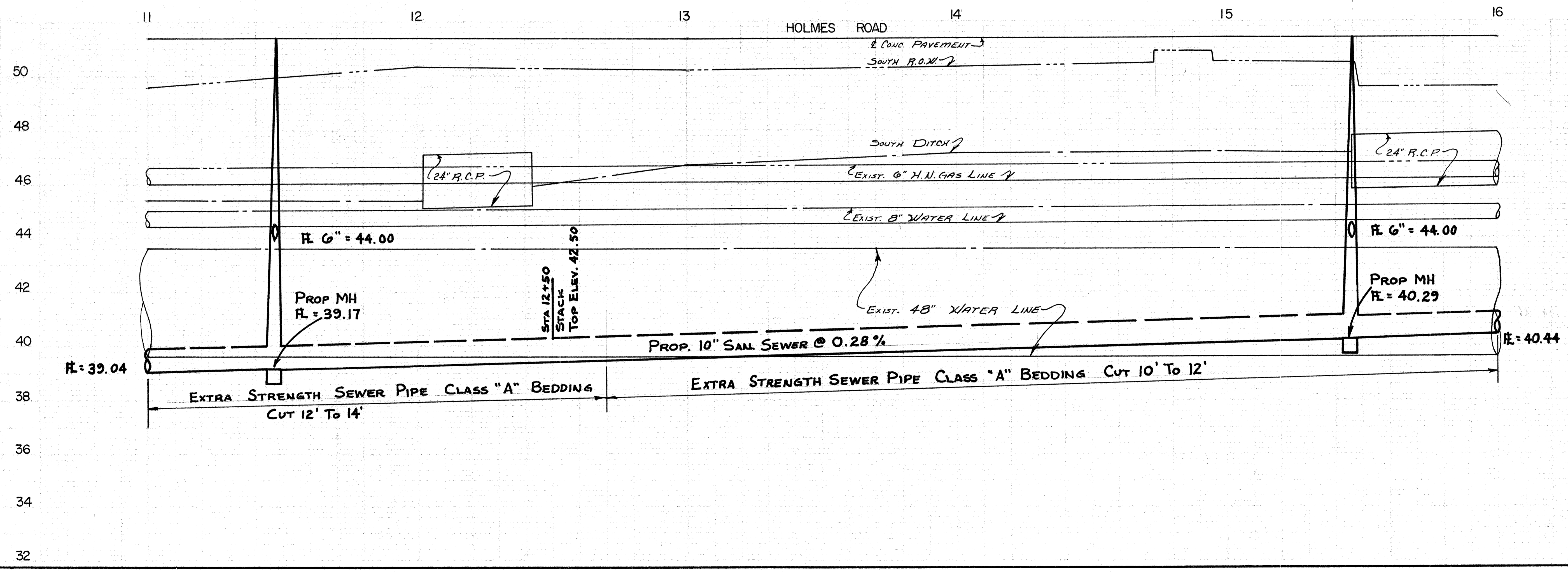
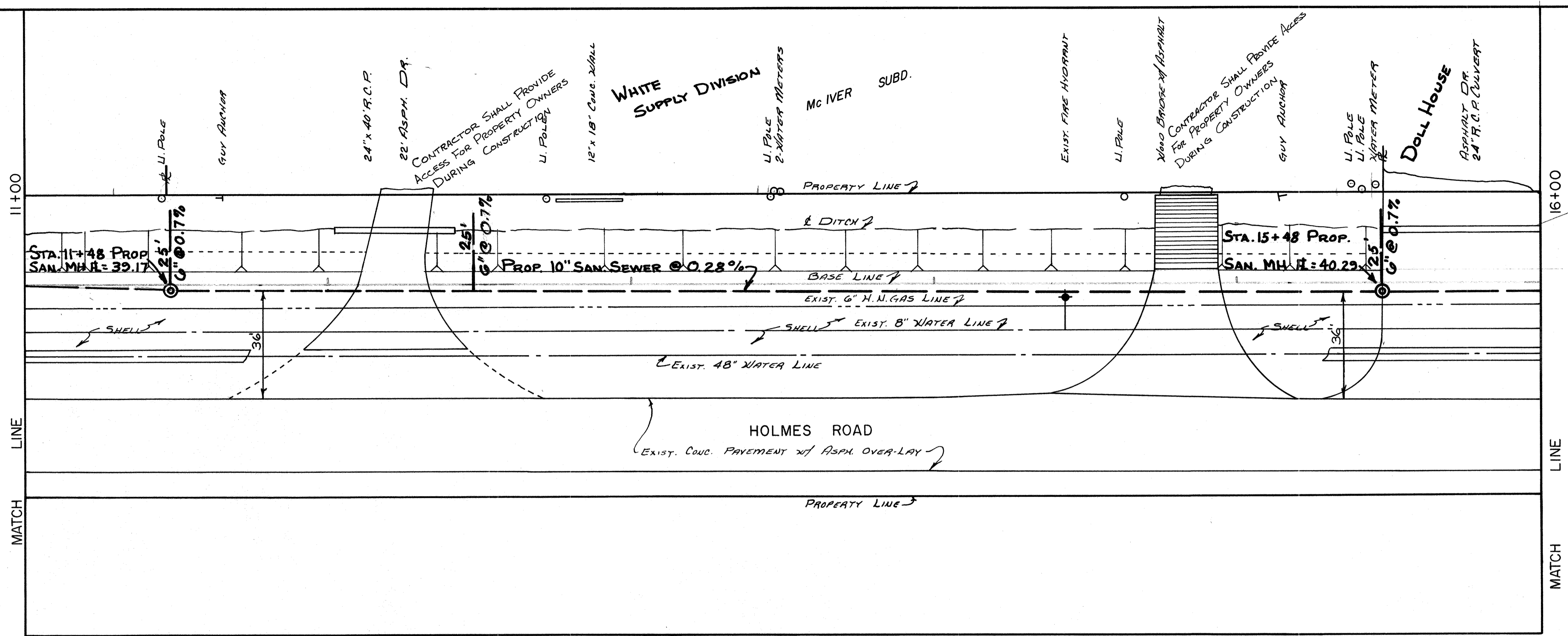
B.M. ELEV. 50.00'  
CITY OF HOUSTON MONUMENT #5365-1216

Approved: *[Signature]*  
ASST. FLOOD CONTROL ENGINEER  
7/23/73  
DATE

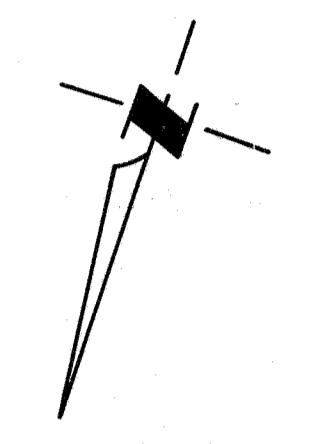
**PROPOSED  
SANITARY SEWER  
ON HOLMES ROAD  
FROM  
SOUTH FREEWAY  
2800 FEET WEST  
JOB NO. 3400**

CITY OF HOUSTON DEPARTMENT OF PUBLIC WORKS	
APPROVALS [Signatures]	APPROVALS [Signatures]
BRIDGE ENGINEER [Signature]	TRAFFIC & TRANSPORTATION [Signature]
CITY SUPERVISOR [Signature]	DIRECTOR OF PUBLIC WORKS [Signature]
ASST. DIRECTOR OF PUBLIC WORKS [Signature]	DIRECTOR OF PUBLIC WORKS [Signature]
SUBMITTED: SCALE: 1"=20' HORZ., 1"=2' VERT. DATE: FEB. 1973 SURV. BY: F. B. NO.:	DESIGNED BY: DRAWN BY: R.W.L. SHEET NO. 3 OF 8 SHEETS DWG. NO.

18127  
4/20/73



NCFCD

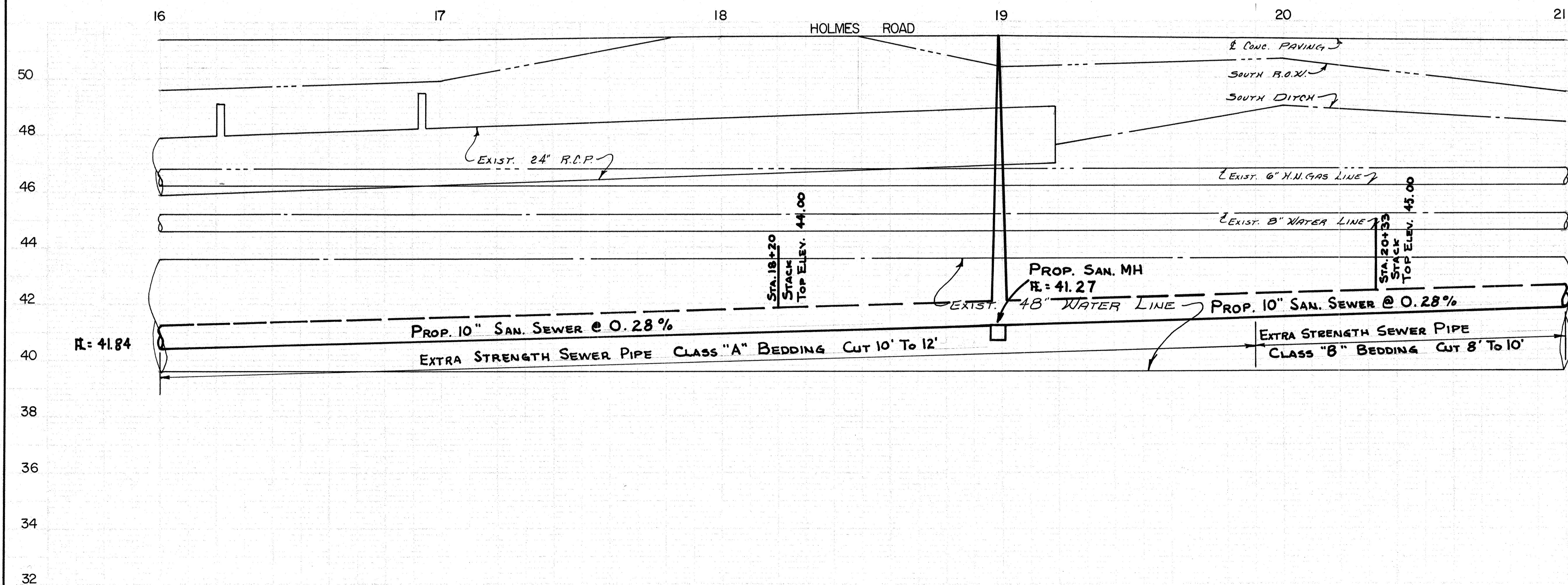
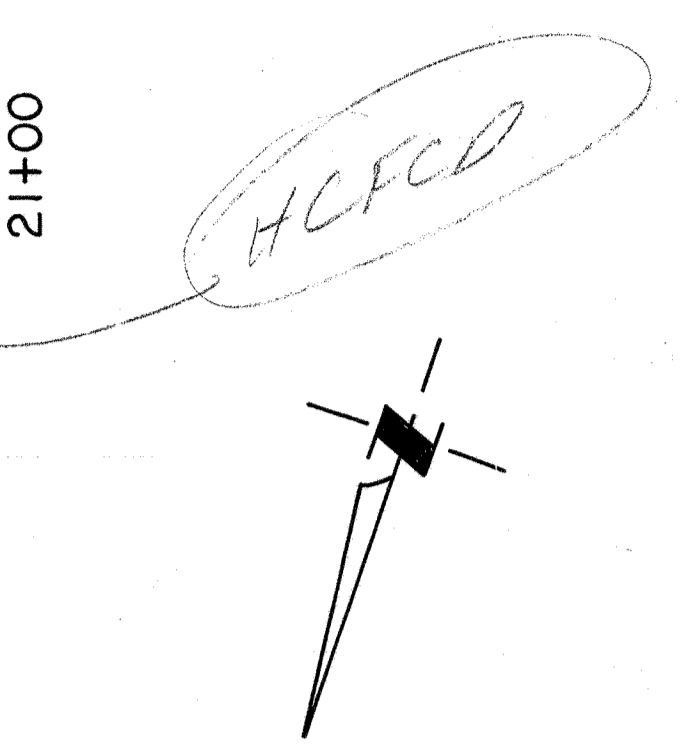
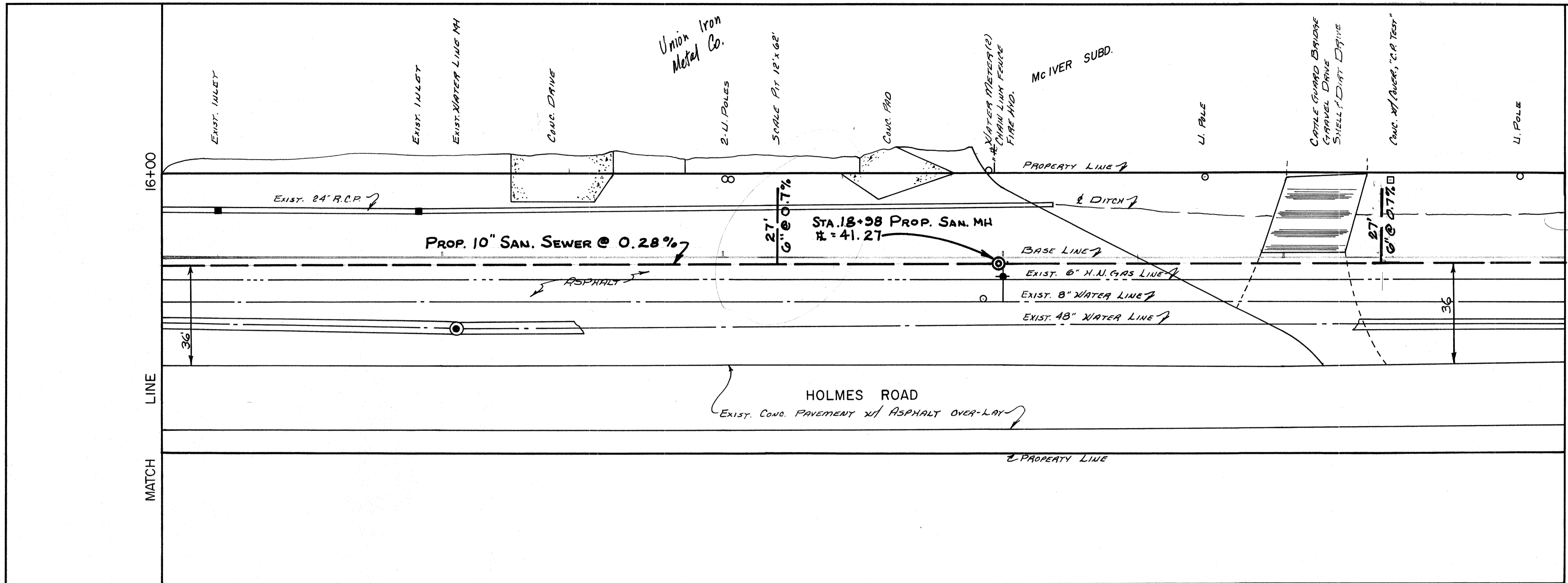


B.M. ELEV. 52.22'  
NORTH BOLT ON FIRE HYD.  
STA. 14+43.

Approved:  
*W. C. Crank*  
ASST. FLOOD CONTROL ENGINEER  
7/22/73  
DATE

PROPOSED  
SANITARY SEWER  
ON HOLMES ROAD  
FROM  
SOUTH FREEWAY  
2800 FEET WEST  
JOB NO. 3400

CITY OF HOUSTON DEPARTMENT OF PUBLIC WORKS	
APPROVALS: [Signature] 7/24/73 [Signature] 7/24/73	[Signature] [Signature]
STORM SEWER [Signature]	SANITARY SEWER [Signature]
SAVING DEPT. [Signature]	WATER DEPT. [Signature]
BRIDGE ENGINEER [Signature]	TRAFFIC & TRANSPORTATION [Signature]
CITY ENGINEER [Signature]	DIRECTOR OF PUBLIC WORKS [Signature]
ASST. DIRECTOR OF PUBLIC WORKS [Signature]	DIRECTOR OF PUBLIC WORKS [Signature]
SUBMITTED: SCALE: 1/20" HORZ., 1/2" VERT. DATE: FEB. 1973	DESIGNED BY: DRAWN BY: R.W.L. SHEET NO. 4 OF 8 SHEETS
SURV. BY: F. B. NO.:	DWG. NO.



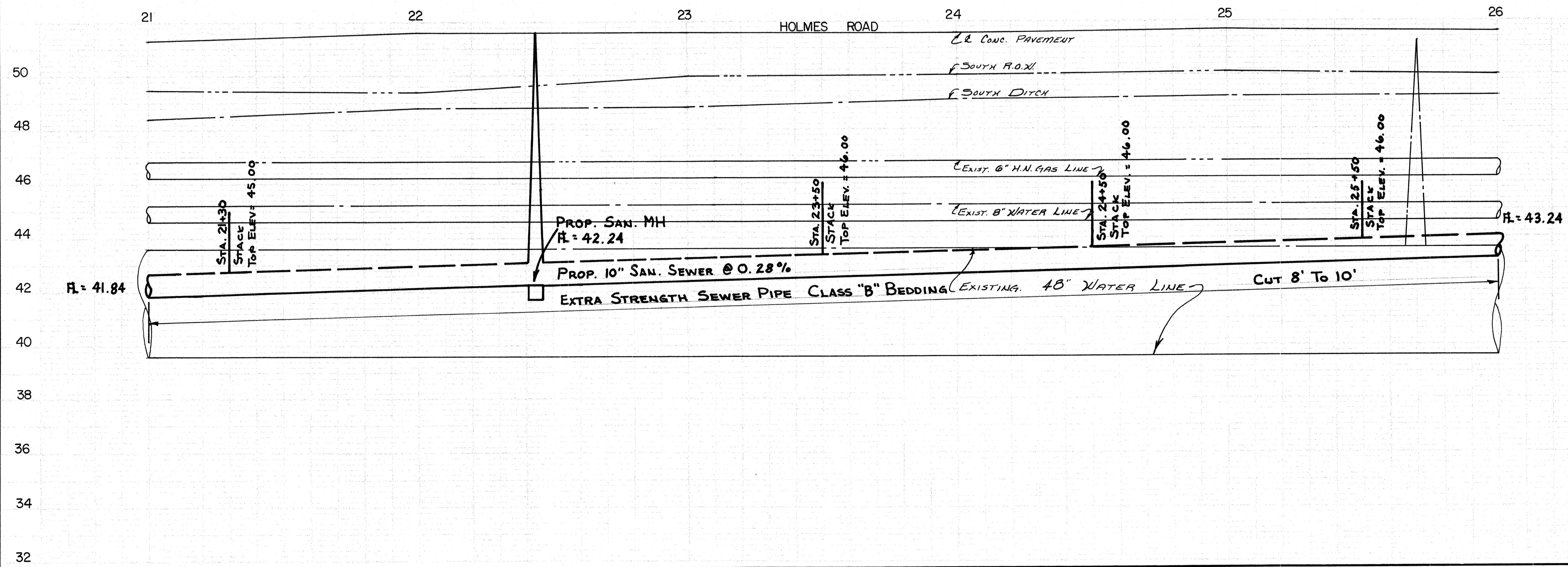
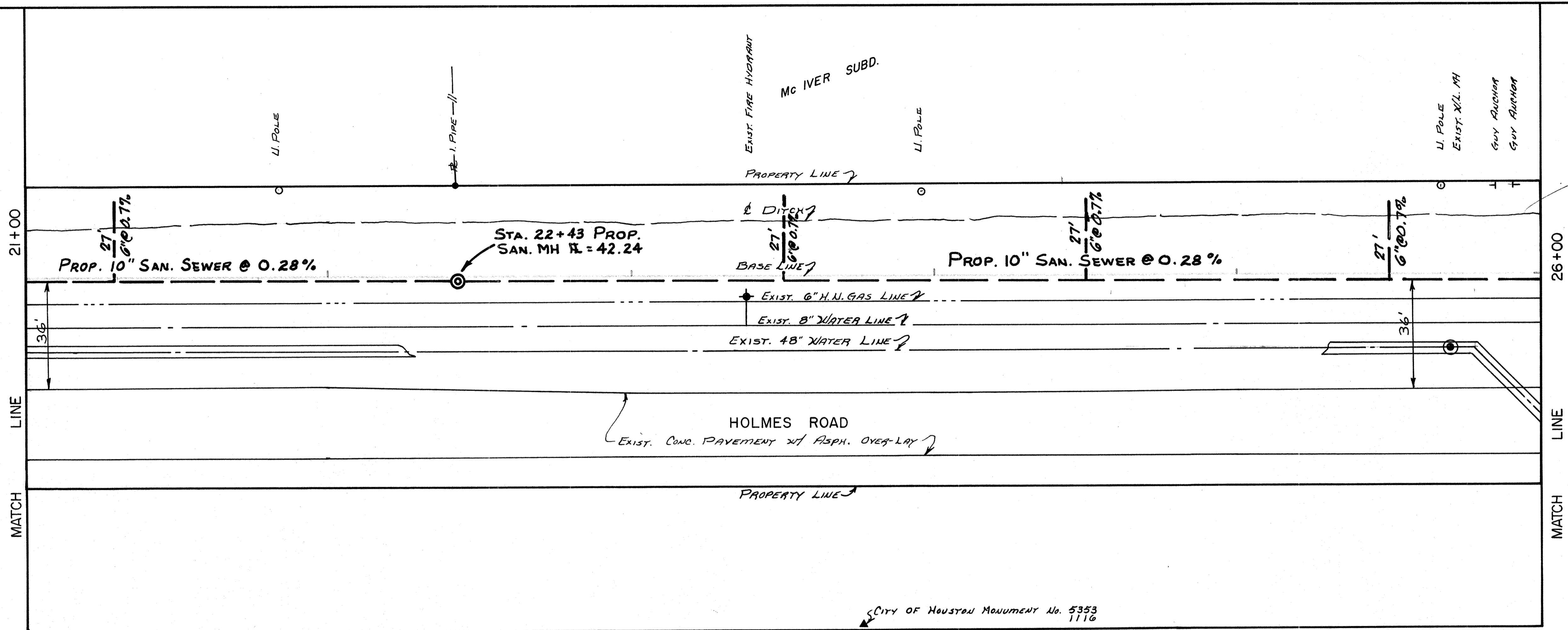
B.M. ELEV. 50.21'  
 City of Houston Monument  
 #3353-1116

Approved: *[Signature]*  
 ASST. FLOOD CONTROL ENGINEER  
 DATE: 7/23/73

PROPOSED  
 SANITARY SEWER  
 ON HOLMES ROAD  
 FROM  
 SOUTH FREEWAY  
 2800 FEET WEST  
 JOB NO. 3400

CITY OF HOUSTON DEPARTMENT OF PUBLIC WORKS	
APPROVALS [Signatures]	APPROVALS [Signatures]
STORM SEWER [Signature]	SANITARY SEWER [Signature]
PAVING DEPT. [Signature]	WATER DEPT. [Signature]
BRIDGE ENGINEER [Signature]	TRAFFIC & TRANSPORTATION [Signature]
CITY SURVEYOR [Signature]	DIRECTOR OF PUBLIC WORKS [Signature]
ASST. DIRECTOR OF PUBLIC WORKS [Signature]	DIRECTOR OF PUBLIC WORKS [Signature]
SUBMITTED: SCALE: 1"=20' HORZ., 1"=2' VERT. DATE: FEB. 1973 SURV. BY: P. S. NO.:	DESIGNED BY: DRAWN BY: R.W.L. SHEET NO. 5 OF 8 SHEETS DWG. NO.

18127  
 6/24/73



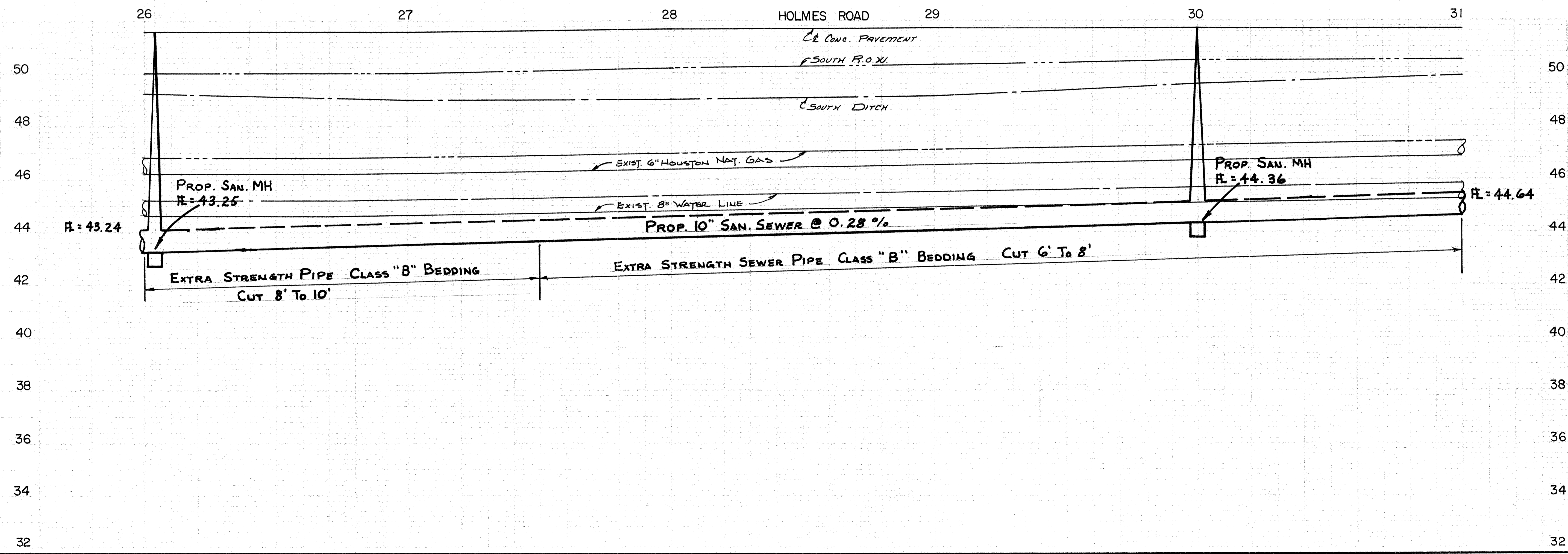
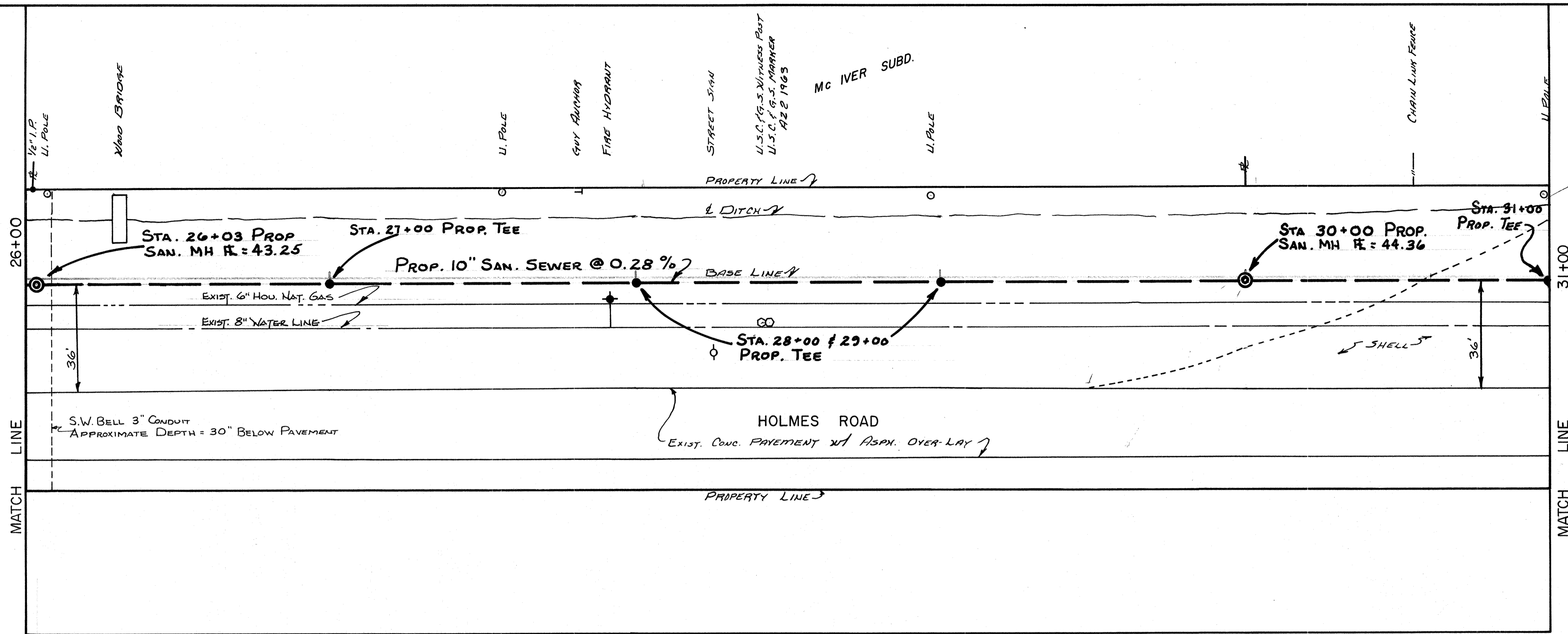
B.M. ELEV. 50.21'  
 City of Houston Monument  
 No. 5353-1116

Approved:  
*J.G. Lamb*  
 ASST. FLOOD CONTROL ENGINEER  
 7/23/73  
 DATE

**PROPOSED  
 SANITARY SEWER  
 ON HOLMES ROAD  
 FROM  
 SOUTH FREEWAY  
 2800 FEET WEST  
 JOB NO. 3400**

CITY OF HOUSTON DEPARTMENT OF PUBLIC WORKS	
APPROVALS <i>[Signature]</i> STATION ENGINEER	<i>[Signature]</i> SANITARY ENGINEER
<i>[Signature]</i> PLANNING DEPT.	<i>[Signature]</i> WATER DEPT.
BRIDGE ENGINEER	TRAFFIC & TRANSPORTATION
CITY SURVEYOR	<i>[Signature]</i>
ASST. DIRECTOR OF PUBLIC WORKS	DIRECTOR OF PUBLIC WORKS
SUBMITTED: SCALE: 1"=20' HORZ., 1"=2' VERT. DATE: FEB. 1973	DESIGNED BY: DRAWN BY: R.W.L. SHEET NO. 6 OF 8 SHEETS DWG. NO.

W. R. C. 18127  
 DATE 4/24/80



B.M. ELEV. 50.44  
 U.S.C. & G.S. MONUMENT  
 12-2 1968  
 STA. 28+44, 13.5 FT.

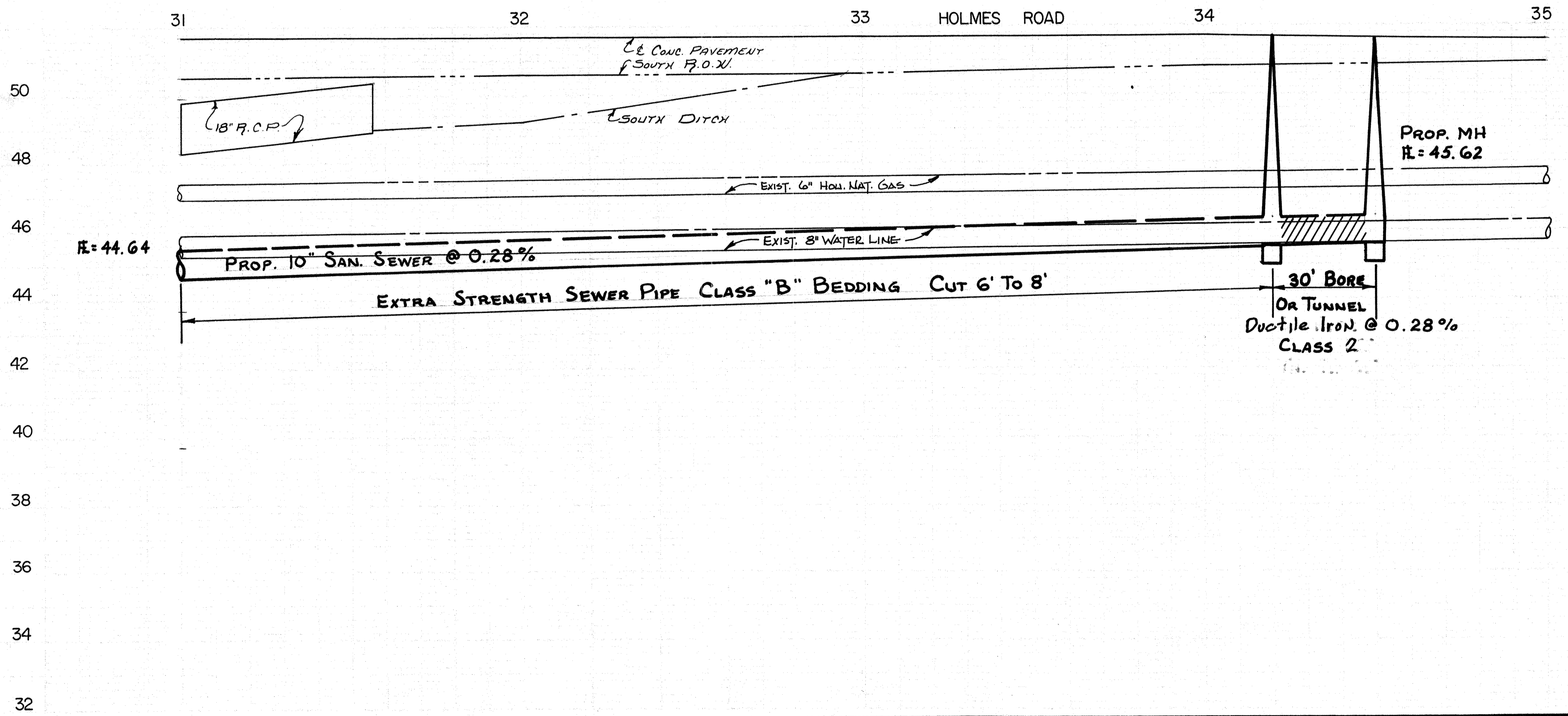
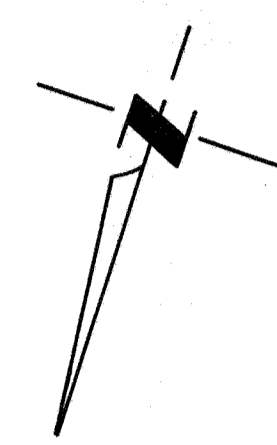
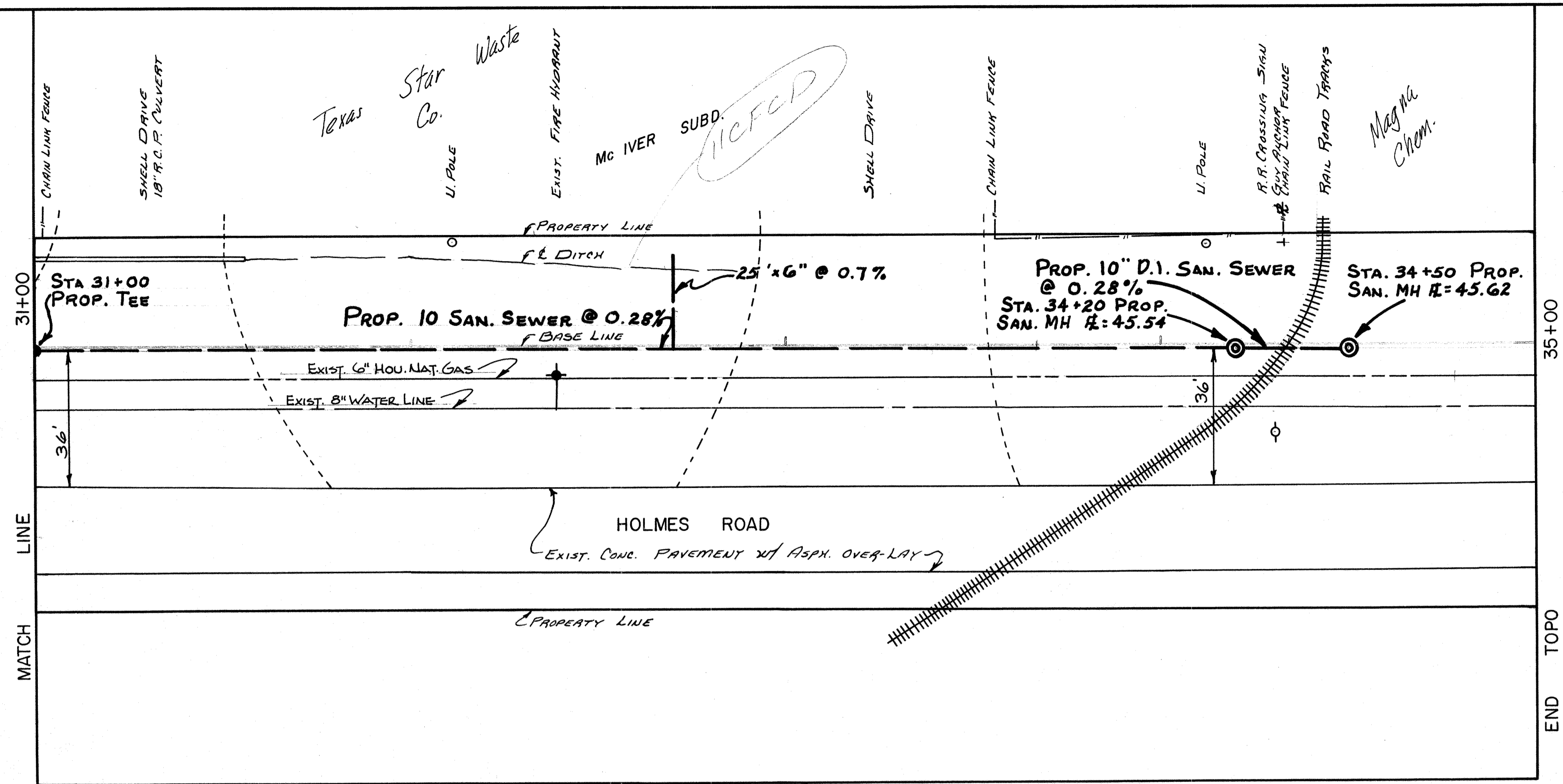
Approved: *[Signature]*  
 ASST. FLOOD CONTROL ENGINEER  
 2/23/73  
 DATE

**PROPOSED  
 SANITARY SEWER  
 ON HOLMES ROAD  
 FROM  
 SOUTH FREEWAY  
 2800 FEET WEST  
 JOB NO 3400**

CITY OF HOUSTON DEPARTMENT OF PUBLIC WORKS	
APPROVALS: [Signature] SANITARY SEWER	[Signature] WATER DEPT.
DESIGNED BY: [Signature]	TRAFFIC & TRANSPORTATION
CITY SURVEYOR: [Signature]	
ASST. DIRECTOR OF PUBLIC WORKS: [Signature]	DIRECTOR OF PUBLIC WORKS: [Signature]
SUBMITTED: SCALE: 1"=20' HORIZ., 1"=2' VERT. DATE: FEB. 1973	DESIGNED BY: DRAWN BY: R.W.L. SHEET NO. 7 OF 8 SHEETS DWG. NO.

18/27





B.M. ELEV. 51.39'  
 TOP. E. RAIL OF R.R. TRACK  
 STA. 341.34 @ BASE LINE

Approved:  
*R. G. Lamb*  
 ASST. FLOOD CONTROL ENGINEER  
 7/23/73  
 DATE

**PROPOSED  
 SANITARY SEWER  
 ON HOLMES ROAD  
 FROM  
 SOUTH FREEWAY  
 2800 FEET WEST  
 JOB NO. 3400**

CITY OF HOUSTON DEPARTMENT OF PUBLIC WORKS	
APPROVAL: <i>R. G. Lamb</i> ASST. FLOOD CONTROL ENGINEER	APPROVAL: <i>W. J. ...</i> CITY ENGINEER
DESIGNED BY: <i>R. G. Lamb</i> DATE: FEB. 1973	DRAWN BY: R.W.L. SHEET NO. 8 OF 8 SHEETS
DWG. NO. 18127	