

CITY OF HOUSTON

HARRIS COUNTY, TEXAS

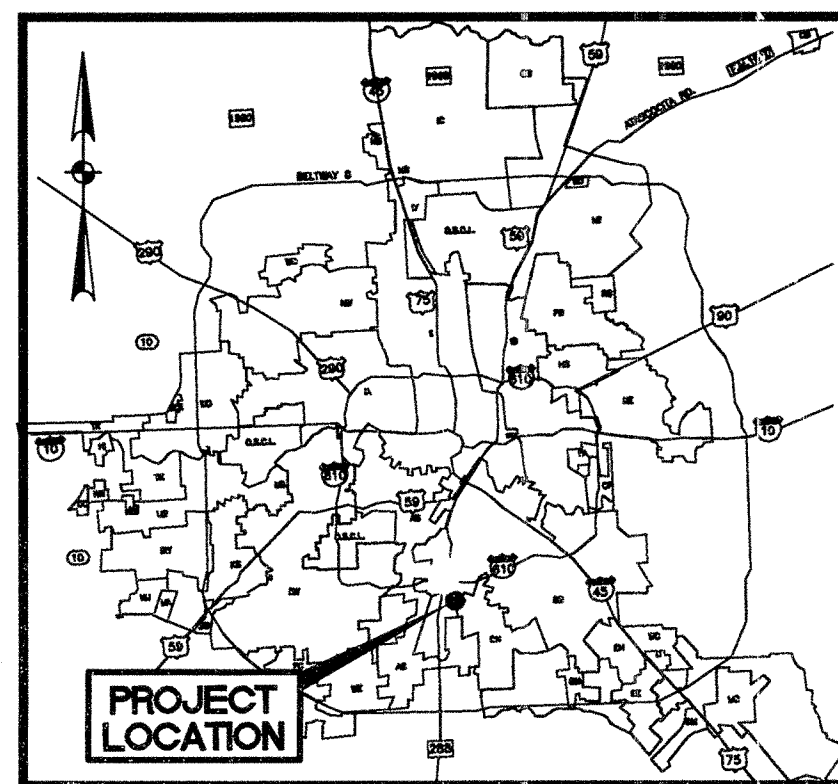
PLANS FOR CONSTRUCTION

OF

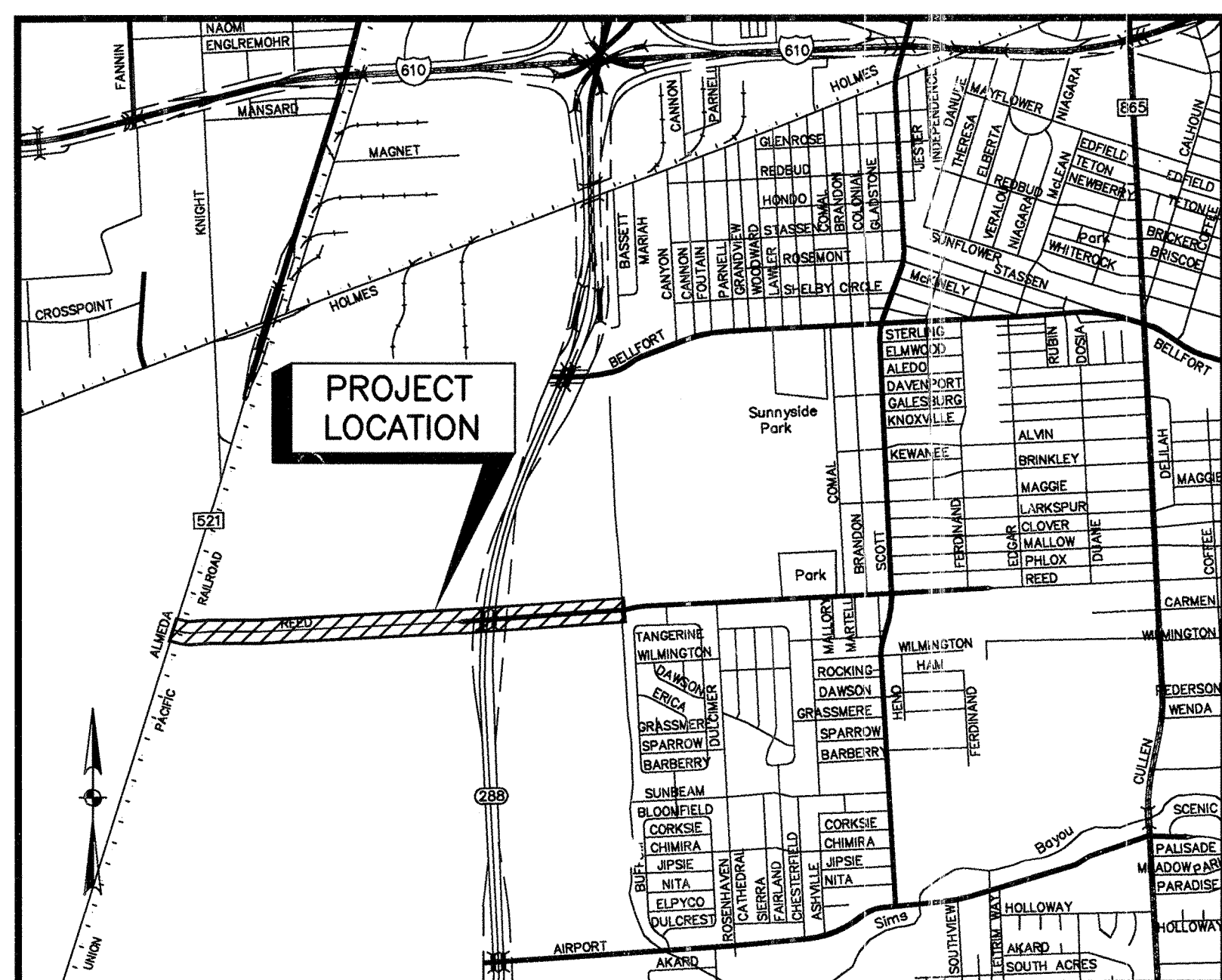
REED ROAD SANITARY SEWER EXTENSION

FROM ALMEDA ROAD TO APPROXIMATELY 1,130 FEET EAST OF S.H. 288

PHASE 1 (STA. 9+18 TO STA. 25+63); PHASE 2 (STA. 25+63 TO STA. 52+83); PHASE 3 (STA. 52+83 TO STA. 70+50)



LOCATION MAP
N.T.S.



VICINITY MAP

SCALE: 1"=2000'

KEY MAP # 572D, 573A, 573B
GIMS MAP # 5353C, 5353D
ZIP # 77045, 77051

SHEET No.	CATEGORY	DESCRIPTION
1	(PHASE 1-3)	COVER SHEET
2	(PHASE 1-3)	CONSTRUCTION NOTES
3	(PHASE 1-3)	PLAN LAYOUT AND SHEET INDEX
3A	(PHASE 1-3/ALT. A)	PLAN LAYOUT AND SHEET INDEX
3B	(PHASE 1-3/ALT. B)	PLAN LAYOUT AND SHEET INDEX
4	(PHASE 1-3)	PROFILE LAYOUT AND SHEET INDEX
4A	(PHASE 1-3/ALT. A)	PROFILE LAYOUT AND SHEET INDEX
4B	(PHASE 1-3/ALT. B)	PROFILE LAYOUT AND SHEET INDEX
5	(PHASE 1-3)	WASTEWATER SERVICE AREA MAP
5A	(PHASE 1-3/ALT. A)	WASTEWATER SERVICE AREA MAP
5B	(PHASE 1-3/ALT. B)	WASTEWATER SERVICE AREA MAP
6	(PHASE 1)	REED ROAD PLAN STA. 9+00 TO 13+40
6A	(PHASE 1/ALT. A)	REED ROAD PLAN STA. 9+00 TO 13+40
7	(PHASE 1)	REED ROAD PROFILE STA. 9+00 TO 13+40
7A	(PHASE 1/ALT. A)	REED ROAD PROFILE STA. 9+00 TO 13+40
8	(PHASE 1)	REED ROAD PLAN STA. 13+40 TO 18+40
8A	(PHASE 1/ALT. A)	REED ROAD PLAN STA. 13+40 TO 18+40
9	(PHASE 1)	REED ROAD PROFILE STA. 13+40 TO 18+40
9A	(PHASE 1/ALT. A)	REED ROAD PROFILE STA. 13+40 TO 18+40
10	(PHASE 1)	REED ROAD PLAN STA. 18+40 TO 23+40
10A	(PHASE 1/ALT. A)	REED ROAD PLAN STA. 18+40 TO 23+40
11	(PHASE 1)	REED ROAD PROFILE STA. 18+40 TO 23+40
11A	(PHASE 1/ALT. A)	REED ROAD PROFILE STA. 18+40 TO 23+40
12	(PHASE 1-2)	REED ROAD PLAN STA. 23+40 TO 28+40
12A	(PHASE 1-2/ALT. A)	REED ROAD PLAN STA. 23+40 TO 28+40
13	(PHASE 2)	REED ROAD PROFILE STA. 23+40 TO 28+40
13A	(PHASE 2/ALT. A)	REED ROAD PROFILE STA. 23+40 TO 28+40
14	(PHASE 2)	REED ROAD PLAN STA. 28+40 TO 33+40
15	(PHASE 2)	REED ROAD PROFILE STA. 28+40 TO 33+40
16	(PHASE 2)	REED ROAD PLAN STA. 33+40 TO 38+40
17	(PHASE 2)	REED ROAD PROFILE STA. 33+40 TO 38+40
18	(PHASE 2)	REED ROAD PLAN STA. 38+40 TO 43+40
19	(PHASE 2)	REED ROAD PROFILE STA. 38+40 TO 43+40
20	(PHASE 2)	REED ROAD PLAN STA. 43+40 TO 48+40
21	(PHASE 2)	REED ROAD PROFILE STA. 43+40 TO 48+40
22	(PHASE 2-3)	REED ROAD PLAN STA. 48+40 TO 53+40
23	(PHASE 2-3)	REED ROAD PROFILE STA. 48+40 TO 53+40
24	(PHASE 3)	REED ROAD PLAN STA. 53+40 TO 58+40
25	(PHASE 3)	REED ROAD PROFILE STA. 53+40 TO 58+40
26	(PHASE 3)	REED ROAD PLAN STA. 58+40 TO 63+40
26B	(PHASE 3/ALT. B)	REED ROAD PLAN STA. 58+40 TO 63+40
27	(PHASE 3)	REED ROAD PROFILE STA. STA. 58+40 TO 63+40
27B	(PHASE 3/ALT. B)	REED ROAD PROFILE STA. STA. 58+40 TO 63+40
28	(PHASE 3)	REED ROAD PLAN AND PROFILE STA. 63+40 TO 67+40
29	(PHASE 3)	REED ROAD PLAN AND PROFILE STA. 67+40 TO 72+40
30	(PHASE 1-3)	STORM WATER POLLUTION PREVENTION SITE PLAN
30A	(PHASE 1-3/ALT. A)	STORM WATER POLLUTION PREVENTION SITE PLAN
30B	(PHASE 1-3/ALT. B)	STORM WATER POLLUTION PREVENTION SITE PLAN
31	(PHASE 1-3)	STORM WATER POLLUTION PREVENTION PLAN DETAILS
32	(PHASE 1-3)	TRAFFIC CONTROL DETAILS
33	(PHASE 1)	ALMEDA ROAD TRAFFIC CONTROL PLAN
34	(PHASE 1/ALT. A)	REED ROAD TRAFFIC CONTROL PLAN
35	(PHASE 3/ALT. B)	REED ROAD TRAFFIC CONTROL PLAN
36	(PHASE 1-3)	DETAILS
37	(PHASE 1-3)	DETAILS
38	(PHASE 1-3)	DETAILS

"CONTRACTOR SHALL NOTIFY THE CITY OF HOUSTON, DEPARTMENT OF PUBLIC WORKS AND ENGINEERING BY BOTH PHONE AND REGISTERED LETTER 48 HOURS PRIOR TO CONSTRUCTION. PH # 713 863-1450.

C.O.F. LOG NO. 07-0464 I LMS NO. 07031677

r.g.miller engineers
since 1968
12121 Wickchester Lane
Suite 200
Houston, Texas 77079
(713) 461-9800

SURVEYED BY: Miller Survey, Inc. FB NO.:

NOTE: CITY SIGNATURES VALID FOR ONE YEAR ONLY AFTER DATE OF SIGNATURES

CITY OF HOUSTON
DEPARTMENT OF PUBLIC WORKS AND ENGINEERING

WATER: *[Signature]* 1-22-09
WASTEWATER: *[Signature]* 1-22-09
STORM: *[Signature]* 1-22-09

STREET & BRIDGE: *[Signature]* 1-22-09

CITY ENGINEER: *[Signature]* 1/22/09
DIRECTOR OF PUBLIC WORKS AND ENGINEERING: *[Signature]* 1/22/09

FOR CITY OF HOUSTON USE ONLY
CITY DWG NO. 41082

SHEET NO 1 OF 38

CONDITIONAL
WASTEWATER CAPACITY LETTER
NO.: 0016035-004
DATE: JUNE 27, 2007

STORM AVAILABILITY LETTER
NO.: SW2007061313
DATE: JUNE 28, 2007

WATER AVAILABILITY LETTER
NO.: 2007061313
DATE: JUNE 27, 2007

P:\MUNICIPAL\3443 REED ROAD\DWG\SOUTH\01-COVER.DWG, OCT. 10, 2007 12:45pm mmmmmmm

REED ROAD - 3343

NOTICE:
 AT LEAST 48 HOURS BEFORE EXCAVATING IN STREET R.O.W. OR EASEMENTS CALL THE ONE STOP NOTIFICATION 713-223-4587.

PRIVATE UTILITY LINES SHOWN

CenterPoint Energy/Electric Facilities (Approved only for crossing underground ductlines, unless otherwise noted. Valid at time of re-signing.)
 Date: 10/15/07

A.S. Miller
 Date: 02/18/07

30C Approved for underground ductlines, unless otherwise noted. Signature valid for one year.
 Date: 10/15/07

CenterPoint Energy/Gas Facilities (Gas service lines are not shown)

BENCHMARK

T.S.A.R.P. RM No. 030405: BEING AN ALUMINUM ROD LOCATED AT THE INTERSECTION OF DEAD END OF WESTERN SUNBEAM STREET AND C132-00-00 LOCATED IN GROUND EAST OF INTERSECTION AND 14.4 FEET NORTHEAST OF NORTH POINT OF DEAD END BARRICADE.
 ELEVATION = 44.46 FEET, NAVD88, 2001 ADJ.

FLOOD PLAIN NOTE

PROJECT IN ZONE "X" (AREAS DETERMINED TO BE OUTSIDE THE 0.2% ANNUAL CHANCE/500-YEAR FLOODPLAIN), AS PER FIRM #48201C0870L, REVISED JUNE 18, 2007.

CAUTION EXISTING GAS PIPELINES

LOT 45
 ACREAGE

CENTER LINE CURVE DATA

C-1
 $\Delta = 313'27"$
 $R = 1962.46'$
 $T = 55.23'$
 $L = 110.43'$
 $CH = S.88'48.41"W$
 (110.42')

NOTE:

1-22-09 - REVISED 36" W.F.L.

DRIVEWAY TO E.R. AND ANN TAYLOR PARK TO REMAIN OPEN AT ALL TIMES.

r.g.miller engineers
 since 1966

12121 Wickchester Lane
 Suite 200
 Houston, Texas 77079
 (713) 461-9600

STATE OF TEXAS
 RONALD J. NIELSEN
 54625
 LICENSED PROFESSIONAL ENGINEER

CITY OF HOUSTON
REED ROAD SANITARY SEWER EXTENSION (PHASE 1)

REED ROAD PLAN
 STA. 13+40 TO 18+40

NOTE: CITY SIGNATURES VALID FOR ONE YEAR ONLY AFTER DATE OF SIGNATURES

CITY OF HOUSTON
 DEPARTMENT OF PUBLIC WORKS AND ENGINEERING

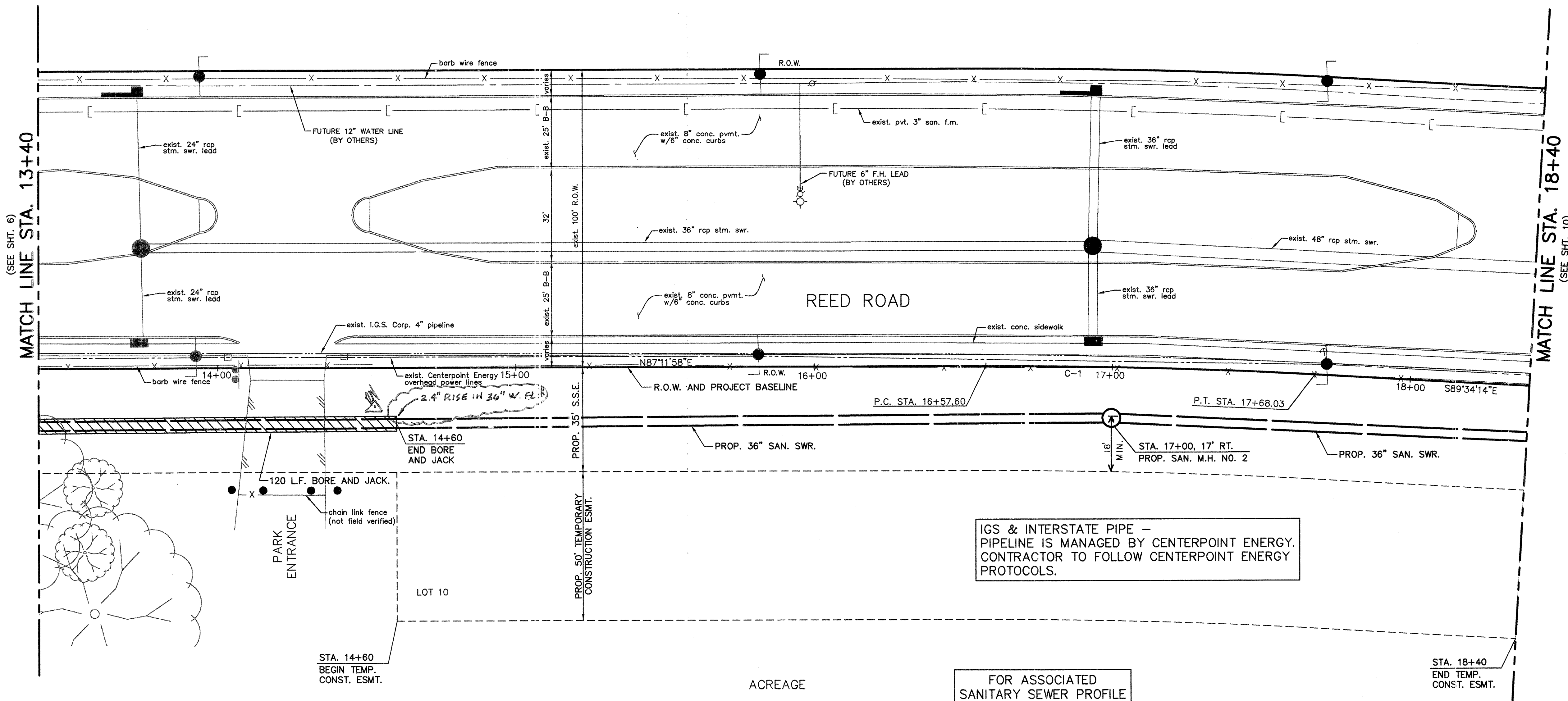
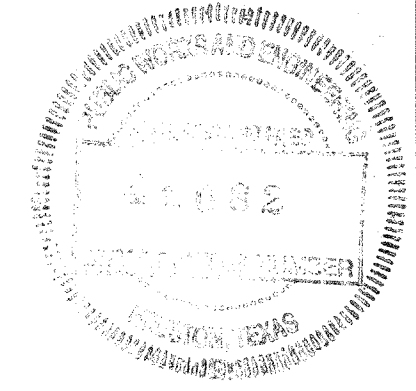
WATER	TRAFFIC & TRANSPORTATION
WASTEWATER	STORM WATER QUALITY
STORM	FACILITIES
STREET & BRIDGE	

FILE NO: _____ FOR CITY OF HOUSTON USE ONLY

DRAWING SCALE

HORZ : 1"=20'

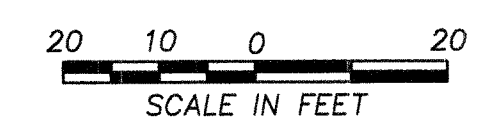
SHEET No: 8 OF 38



IGS & INTERSTATE PIPE - PIPELINE IS MANAGED BY CENTERPOINT ENERGY. CONTRACTOR TO FOLLOW CENTERPOINT ENERGY PROTOCOLS.

FOR ASSOCIATED SANITARY SEWER PROFILE SEE SHT. 9

INSIDE DIAMETER OF PIPE AT JOINT TO BE SEALED WITH APPROVED HOBAS PIPE MORTAR MATERIAL AND SEALED.



NOTICE:
 AT LEAST 48 HOURS BEFORE EXCAVATING IN STREET R.O.W. OR EASEMENTS CALL THE LONE STAR NOTIFICATION 713-223-4567.

PRIVATE UTILITY LINES SHOWN

CenterPoint Energy/Electric Facilities
 (Approved only for crossing underground ductlines, unless otherwise noted)
 Valid of time of review only.

Date: 10/15/07
 Signature: *[Signature]*

CenterPoint Energy/Gas Facilities
 (Gas service lines are not shown)

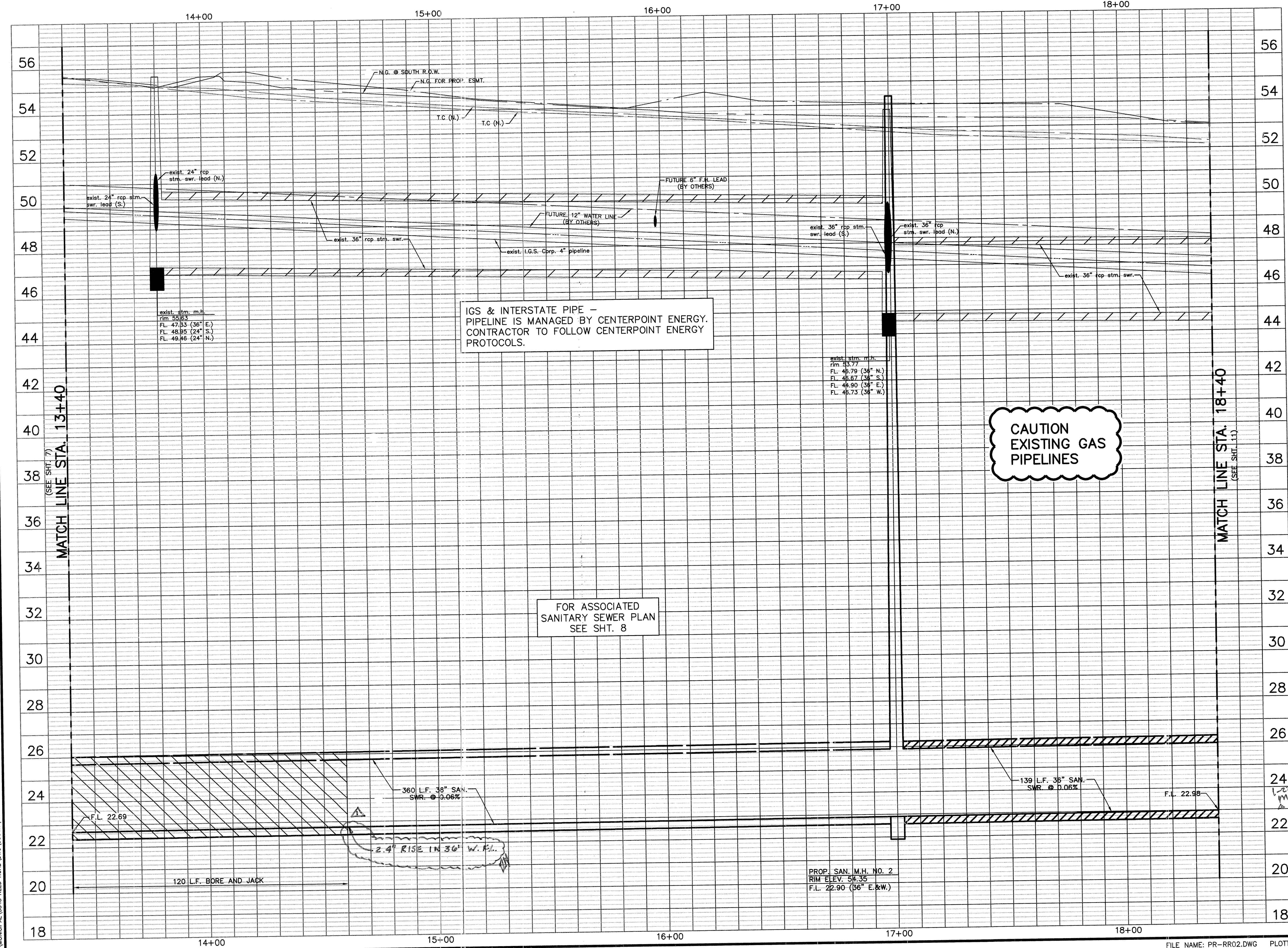
Date: 10/15/07
 Signature: *[Signature]*

BENCHMARK

T.S.A.R.P. RM No. 030405: BEING AN ALUMINUM ROD LOCATED AT THE INTERSECTION OF DEAD END OF WESTERN SUNBEAM STREET AND C132-00-00 LOCATED IN GROUND EAST OF INTERSECTION AND 14.4 FEET NORTHEAST OF NORTH POINT OF DEAD END BARRICADE.
 ELEVATION = 44.46 FEET, NAVD83, 2001 ADJ.

FLOOD PLAIN NOTE

PROJECT IN ZONE "X" (AREAS DETERMINED TO BE OUTSIDE THE 0.2% ANNUAL CHANCE/500-YEAR FLOODPLAIN), AS PER FIRM #4820100870L, REVISED JUNE 18, 2007.



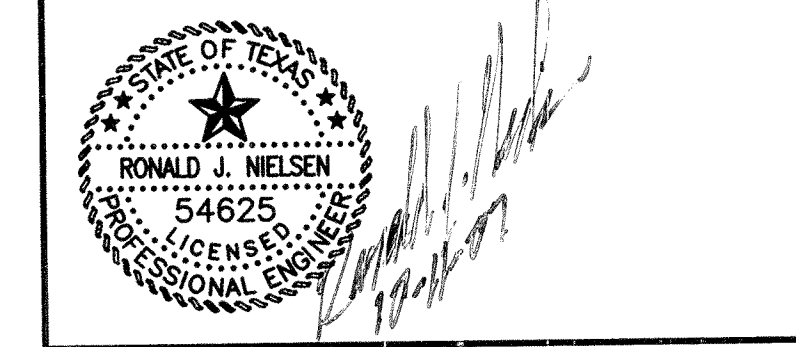
IGS & INTERSTATE PIPE - PIPELINE IS MANAGED BY CENTERPOINT ENERGY. CONTRACTOR TO FOLLOW CENTERPOINT ENERGY PROTOCOLS.

CAUTION EXISTING GAS PIPELINES

FOR ASSOCIATED SANITARY SEWER PLAN SEE SHT. 8

1-22-09 - REVISED 36" W.F.L.

r.g.miller engineers
 since 1966
 12121 Wickchester Lane
 Suite 200
 Houston, Texas 77079
 (713) 461-9600



CITY OF HOUSTON
 REED ROAD SANITARY SEWER EXTENSION (PHASE 1)

REED ROAD PROFILE
 STA. 13+40 TO 18+40

NOTE: CITY SIGNATURES VALID FOR ONE YEAR ONLY AFTER DATE OF SIGNATURES

CITY OF HOUSTON
 DEPARTMENT OF PUBLIC WORKS AND ENGINEERING

WATER: *[Signature]* 10/15/07
 WASTEWATER: *[Signature]* 10/15/07
 STORM: *[Signature]* 10/15/07
 TRAFFIC & TRANSPORTATION: *[Signature]* 10/15/07
 STORM WATER QUALITY: *[Signature]* 10/15/07
 FACILITIES: *[Signature]* 10/15/07
 STREET & BRIDGE: *[Signature]* 10/15/07

FILE NO: _____ FOR CITY OF HOUSTON USE ONLY

DRAWING SCALE

HORIZ : 1"=20'
 VERT : 1"=2'

SHEET No: 9 OF 38