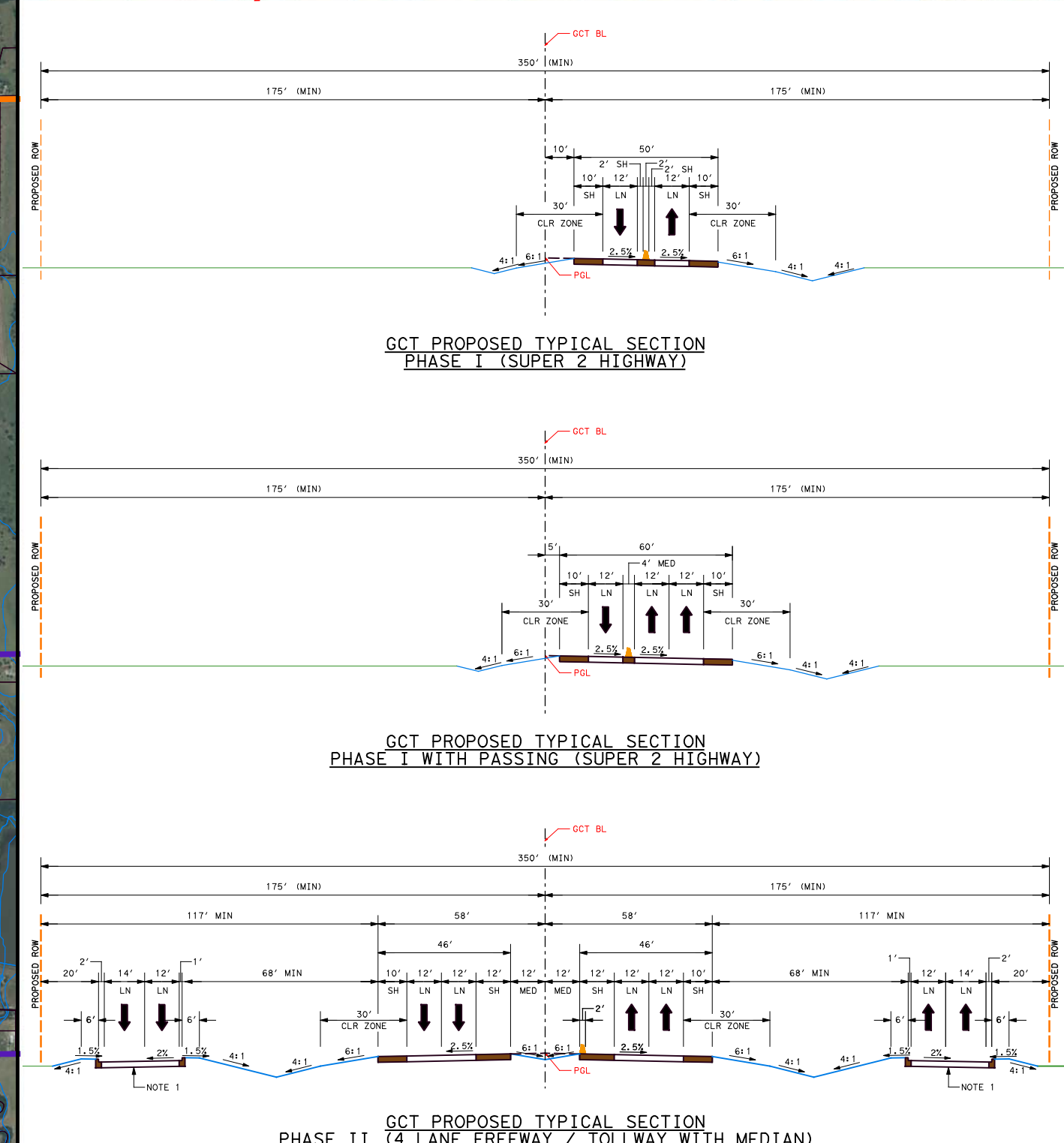
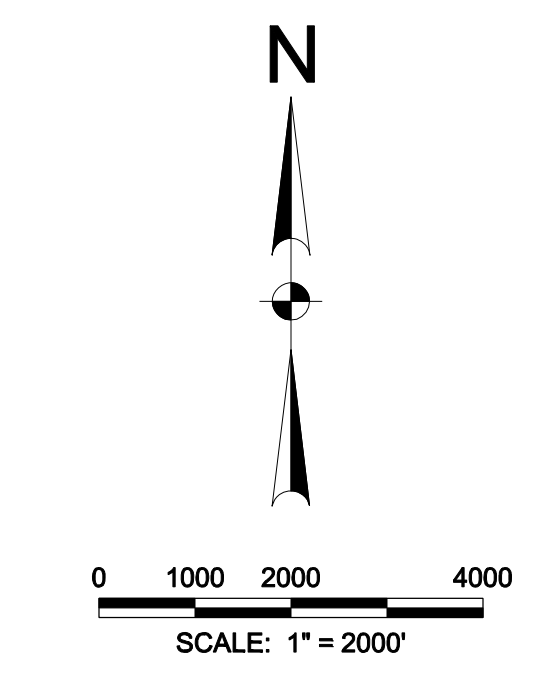
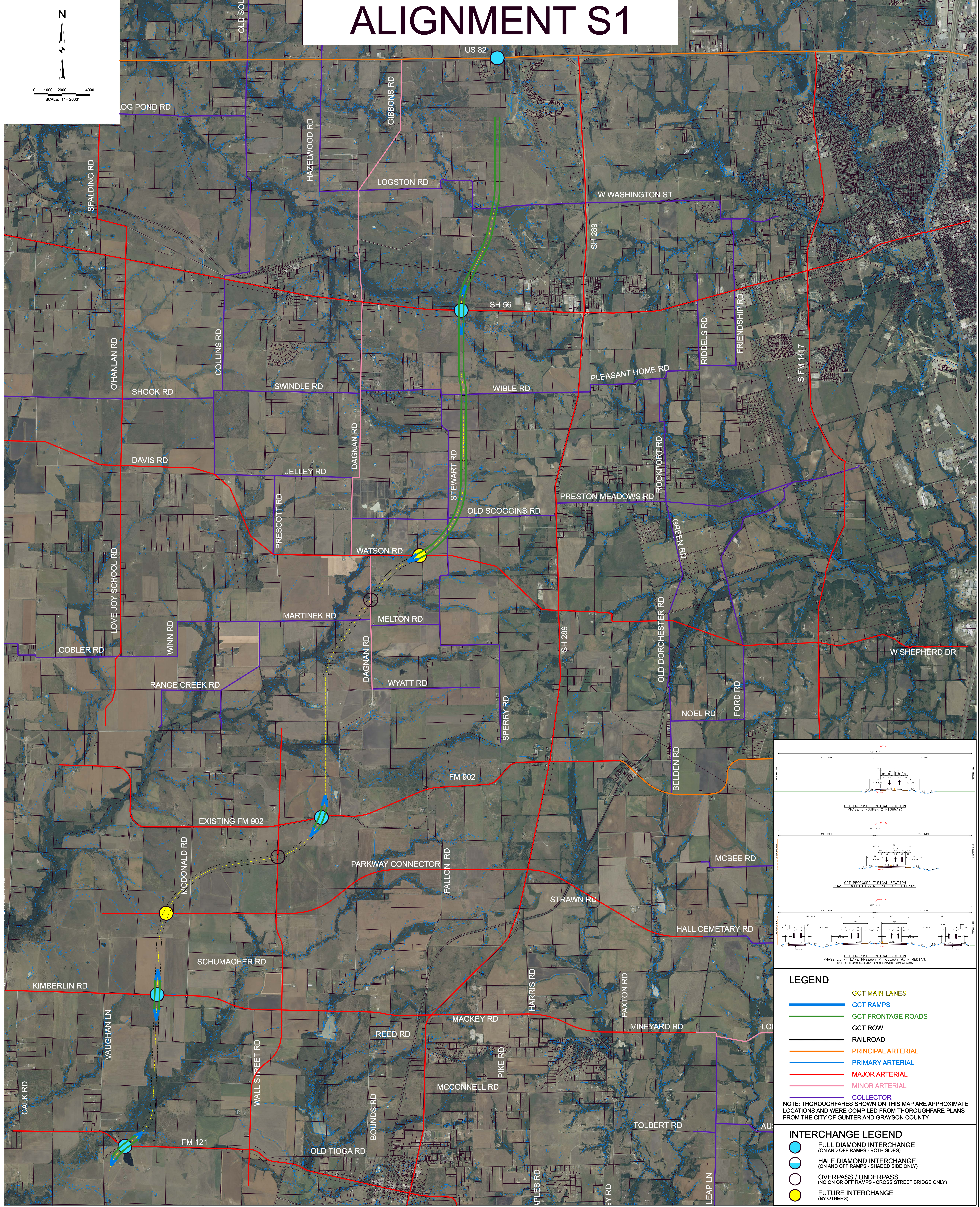


# ALIGNMENT S1



- LEGEND**
- GCT MAIN LANES
  - GCT RAMPS
  - GCT FRONTAGE ROADS
  - GCT ROW
  - RAILROAD
  - PRINCIPAL ARTERIAL
  - PRIMARY ARTERIAL
  - MAJOR ARTERIAL
  - MINOR ARTERIAL
  - COLLECTOR
- NOTE: THOROUGHFARES SHOWN ON THIS MAP ARE APPROXIMATE LOCATIONS AND WERE COMPILED FROM THOROUGHFARE PLANS FROM THE CITY OF GUNTER AND GRAYSON COUNTY

- INTERCHANGE LEGEND**
- FULL DIAMOND INTERCHANGE (ON AND OFF RAMPS - BOTH SIDES)
  - HALF DIAMOND INTERCHANGE (ON AND OFF RAMPS - SHADED SIDE ONLY)
  - OVERPASS / UNDERPASS (NO ON OR OFF RAMPS - CROSS STREET BRIDGE ONLY)
  - FUTURE INTERCHANGE (BY OTHERS)

Project No.:	Revision
Issued:	No.   Date   Description
Drawn By: ADL	
Checked By: ADL	
Scale: 1" = 2000'	
Sheet Title	
Sheet Number	

**BROWN & GAY ENGINEERS, INC.**  
 Houston • Austin • Dallas • Fort Worth • Frisco  
 TBPE Registration No. F-1046

**TEXAS DEPARTMENT OF TRANSPORTATION**

**GRAYSON COUNTY TOLLWAY**  
 PROPOSED INTERCHANGE CONCEPTS - ALIGN S1  
 GRAYSON COUNTY, TEXAS