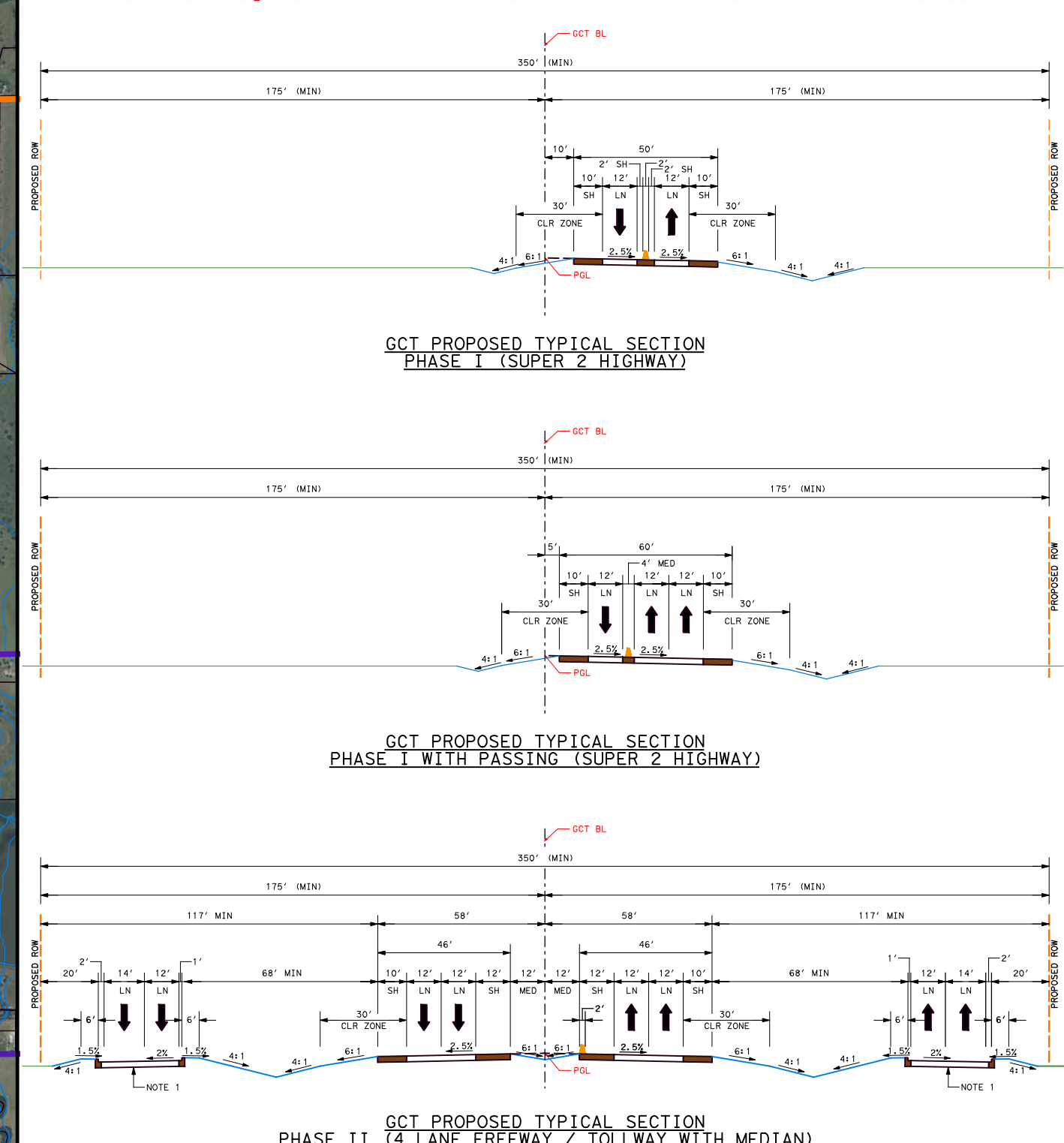
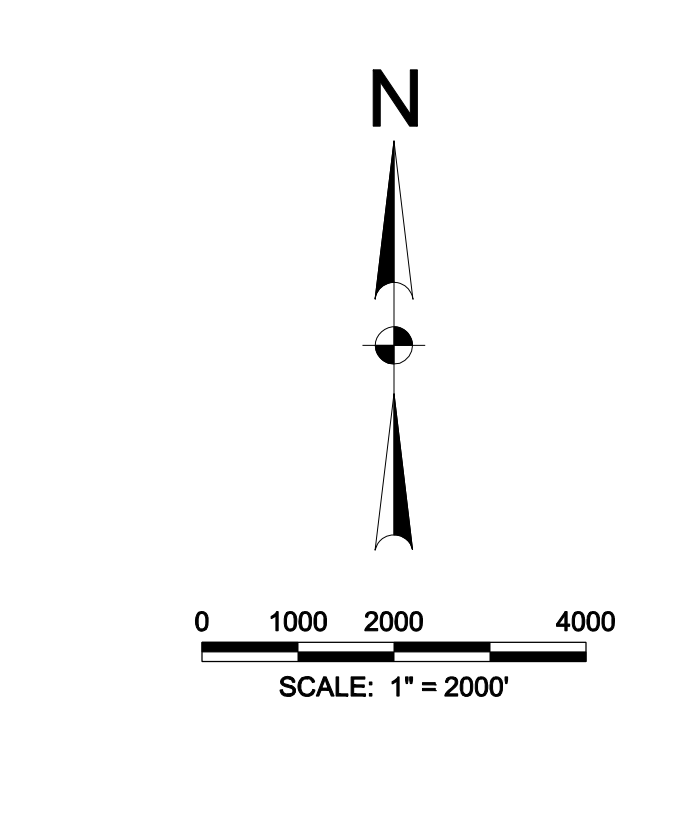
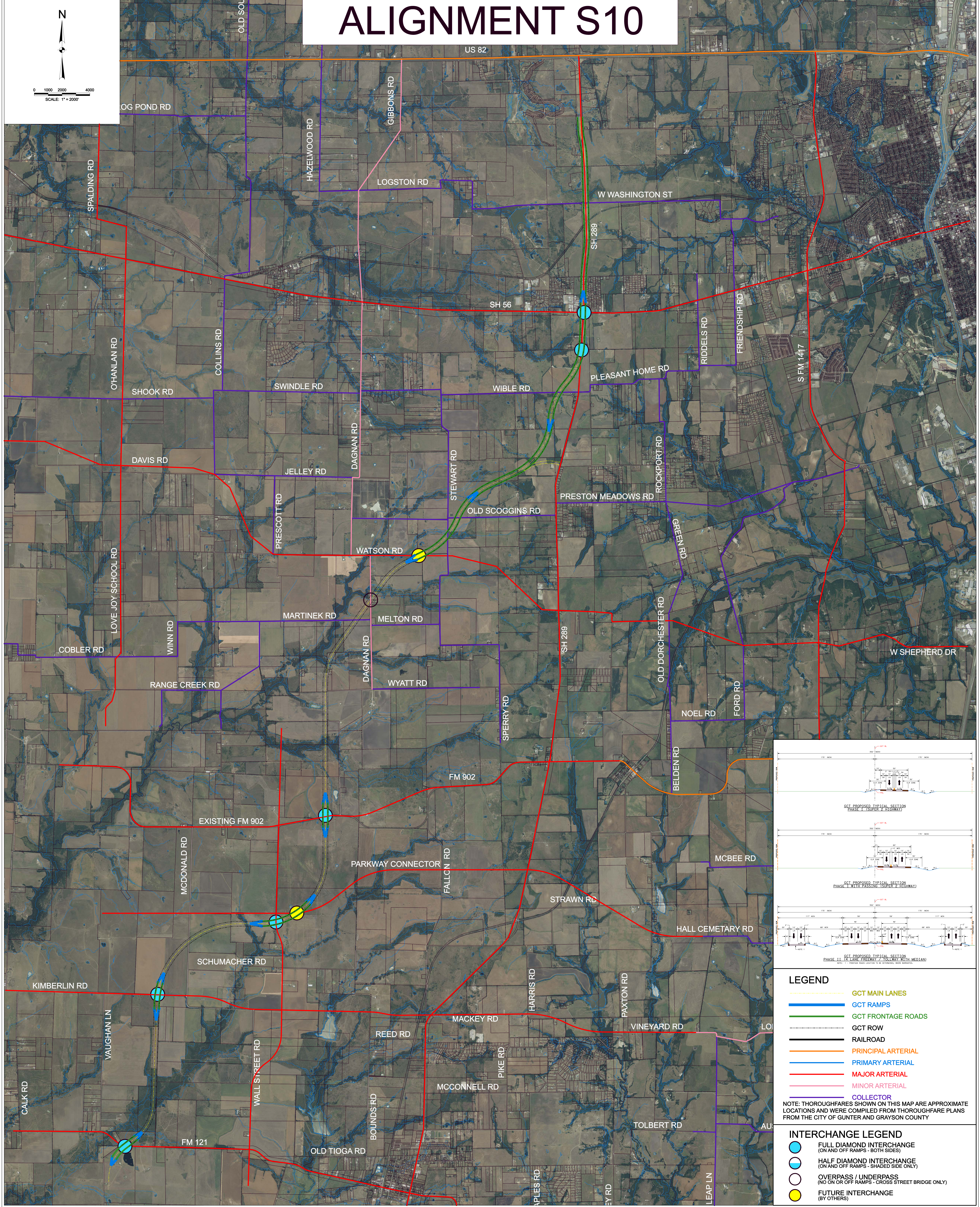


ALIGNMENT S10



- LEGEND**
- GCT MAIN LANES
 - GCT RAMPS
 - GCT FRONTAGE ROADS
 - GCT ROW
 - RAILROAD
 - PRINCIPAL ARTERIAL
 - PRIMARY ARTERIAL
 - MAJOR ARTERIAL
 - MINOR ARTERIAL
 - COLLECTOR
- NOTE: THOROUGHFARES SHOWN ON THIS MAP ARE APPROXIMATE LOCATIONS AND WERE COMPILED FROM THOROUGHFARE PLANS FROM THE CITY OF GUNTER AND GRAYSON COUNTY

- INTERCHANGE LEGEND**
- FULL DIAMOND INTERCHANGE (ON AND OFF RAMPS - BOTH SIDES)
 - HALF DIAMOND INTERCHANGE (ON AND OFF RAMPS - SHADED SIDE ONLY)
 - OVERPASS / UNDERPASS (NO ON OR OFF RAMPS - CROSS STREET BRIDGE ONLY)
 - FUTURE INTERCHANGE (BY OTHERS)

Project No.:		Revision	
Issued:		No.	Date
Drawn By: ADL			
Checked By: ADL			
Scale: 1" = 2000'			
Sheet Title			
Sheet Number			

BROWN & GAY ENGINEERS, INC.
 Houston • Austin • Dallas • Fort Worth • Frisco
 TBPE Registration No. F-1046

TEXAS DEPARTMENT OF TRANSPORTATION

GRAYSON COUNTY TOLLWAY
 PROPOSED INTERCHANGE CONCEPTS - ALIGN S10
 GRAYSON COUNTY, TEXAS