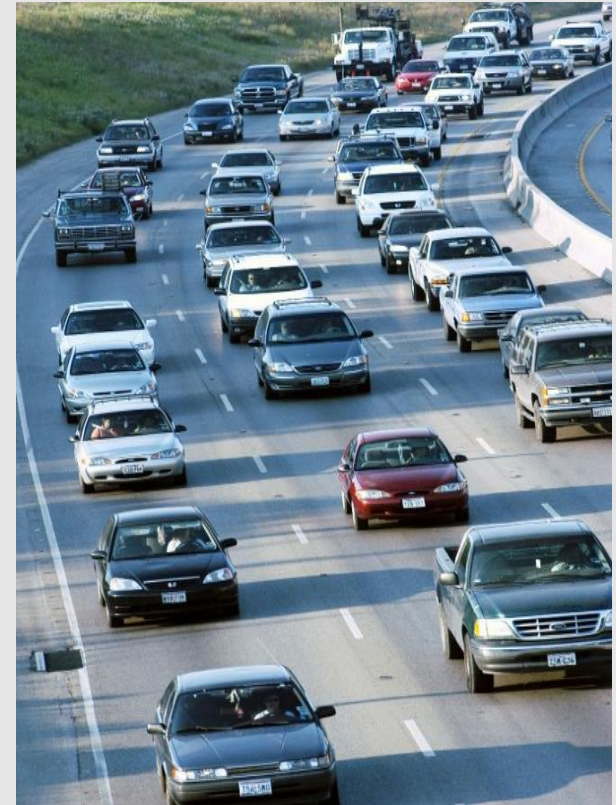




LOOP 337

OPEN HOUSE PUBLIC MEETING





Loop 337

FROM: IH 35

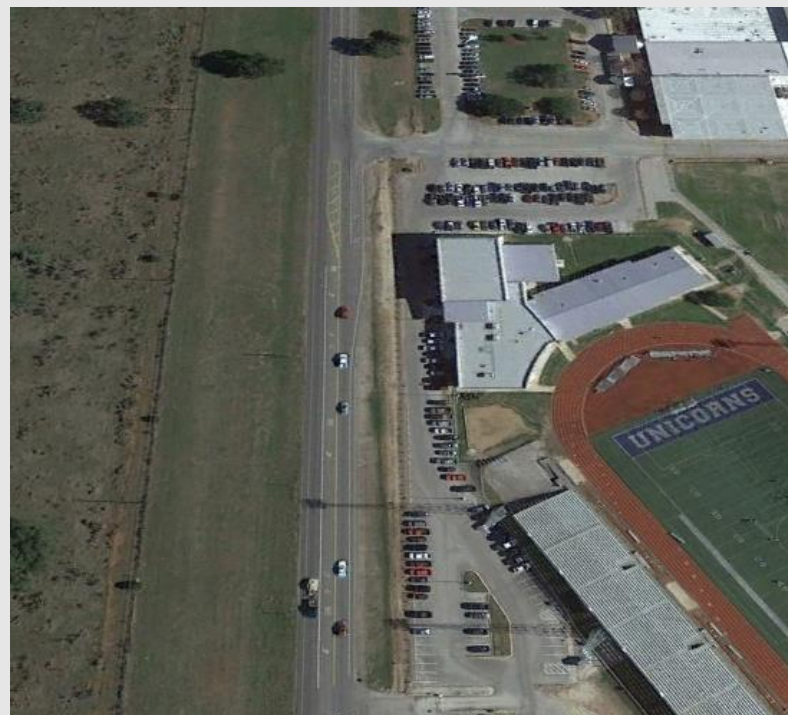
TO: Hillcrest Drive

COMAL COUNTY

OPEN HOUSE PUBLIC MEETING

NOVEMBER 12, 2015

5:00 – 7:00

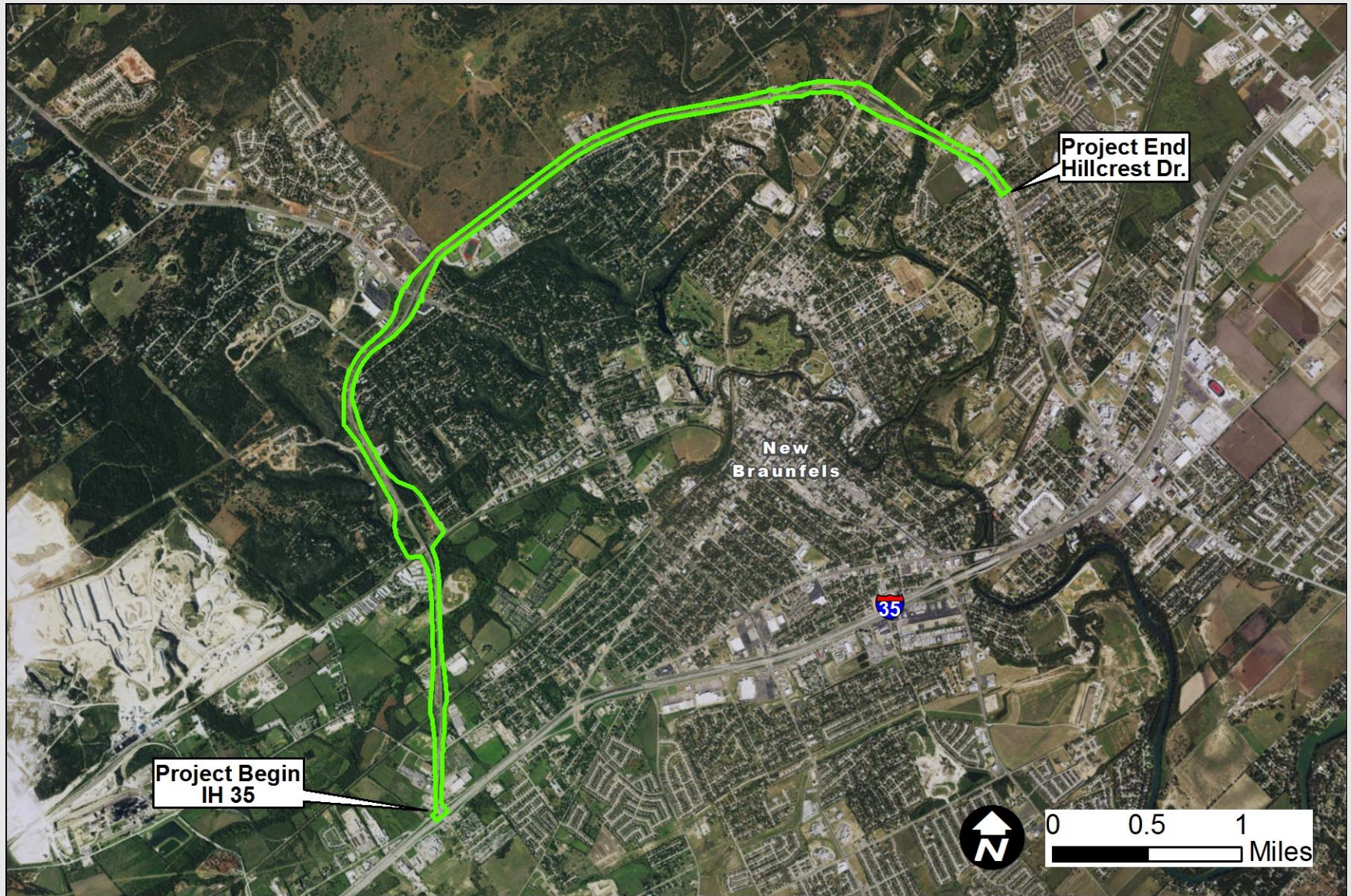


NEW BRAUNFELS HIGH SCHOOL

2551 Loop 337

New Braunfels, TX 78130

Project Location



Need and Purpose

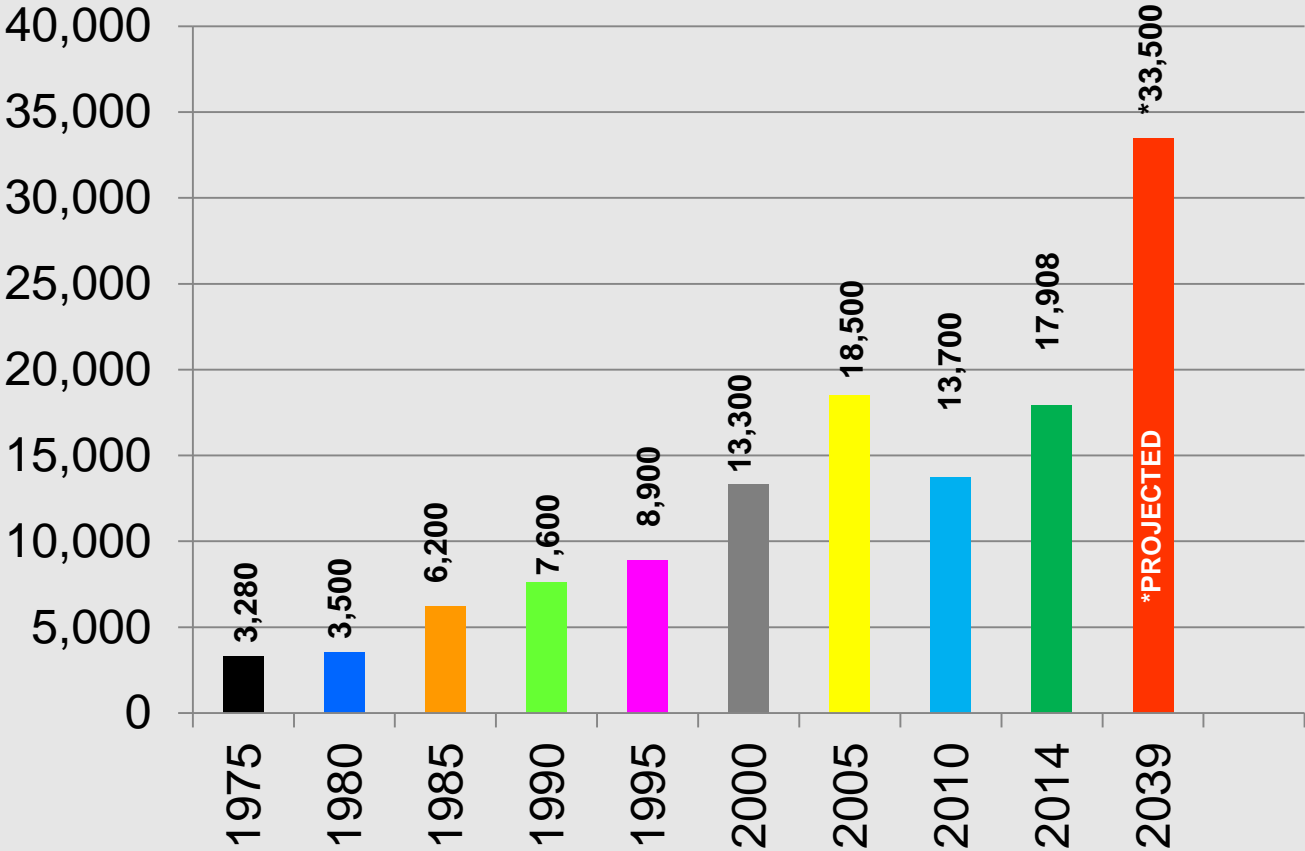
■ Need

- Growth along LP 337 has resulted in the degradation of traffic flow through the corridor
 - According to the Alamo Area Metropolitan Planning Organization, six geographies in the project area rank in the top third in Comal County for projected population growth between 2010-2040.
 - Large scale master development is planned along LP 337 in the project area
 - Traffic volumes on Loop 337 are expected to increase by 40-50% percent over the next 20 years.
- Increase in number of access points along the corridor without adequate turn lanes have created additional conflict points

■ Purpose

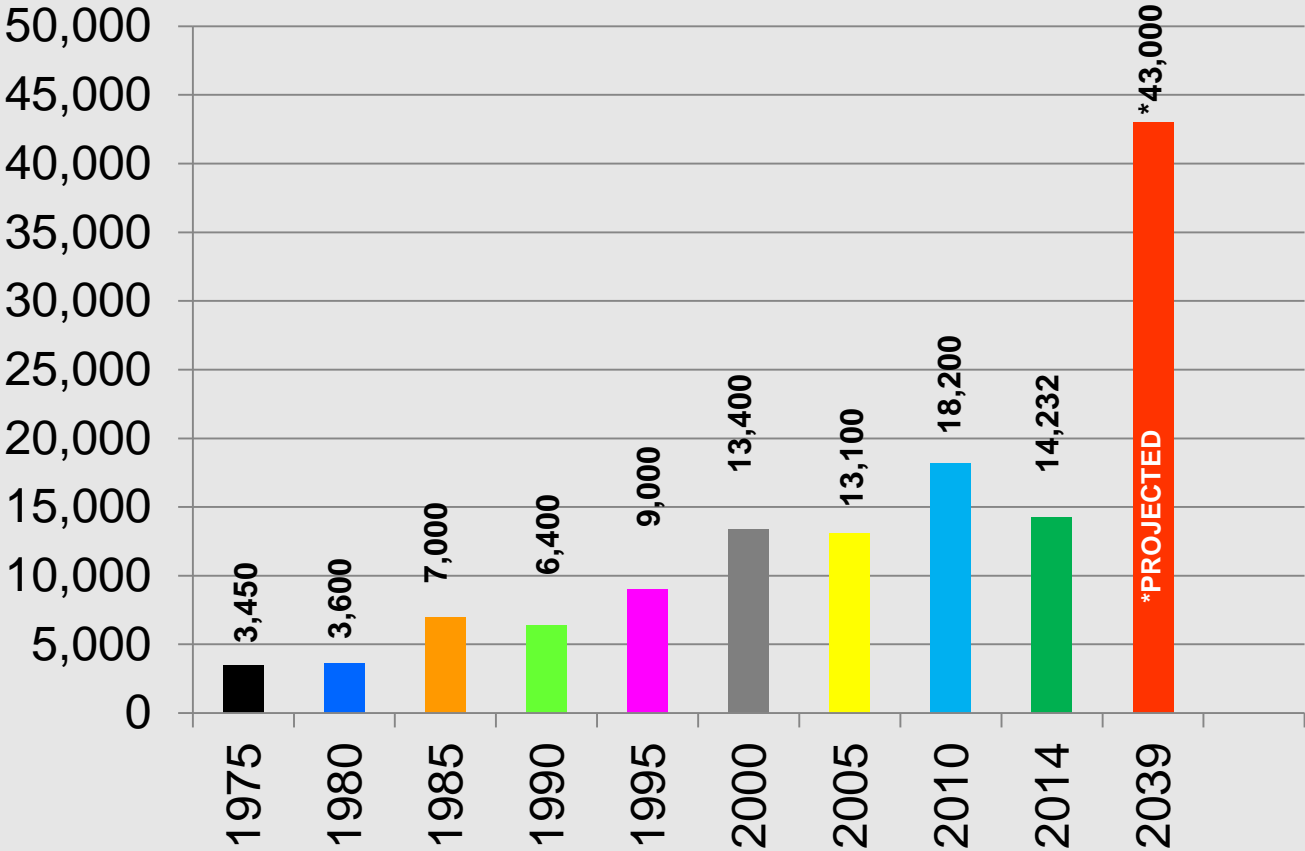
- The purpose of the project is to facilitate traffic flow on LP 337 in order to accommodate the projected increase in traffic and population growth.

Projected Traffic



Loop 337 (North of River Road) – Average Daily Traffic

Projected Traffic

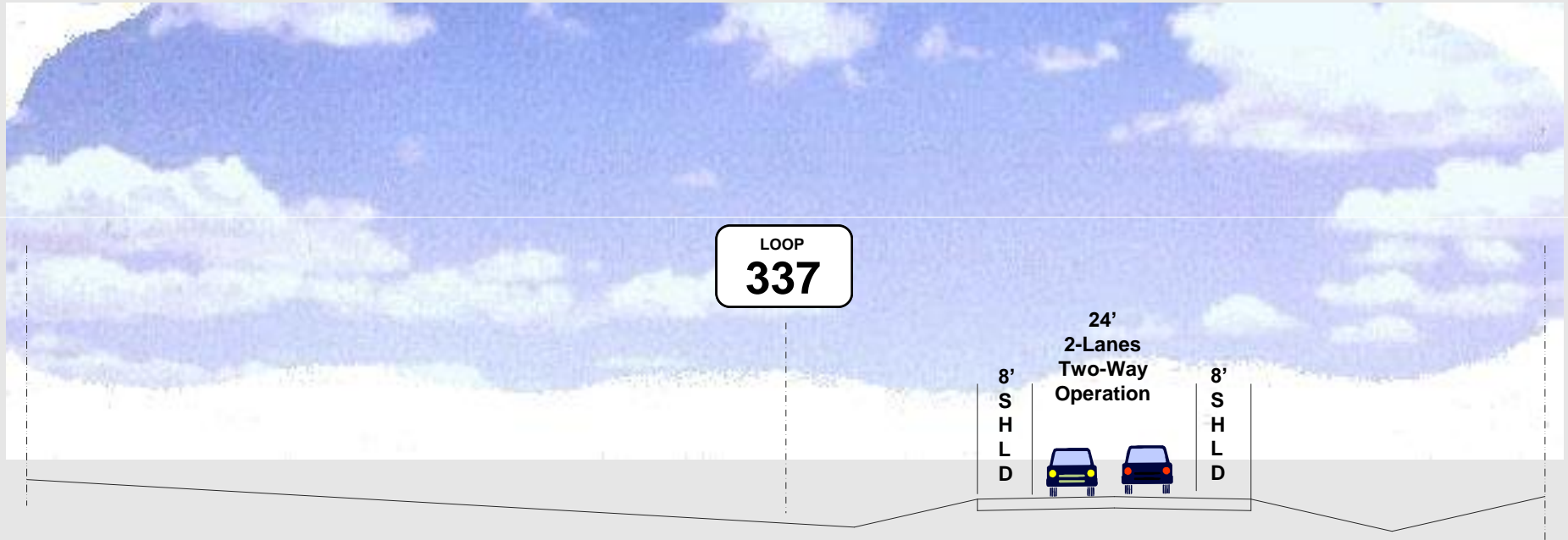


Loop 337 (South of SH 46 / Vicinity of San Antonio St.) – Average Daily Traffic

Project Information

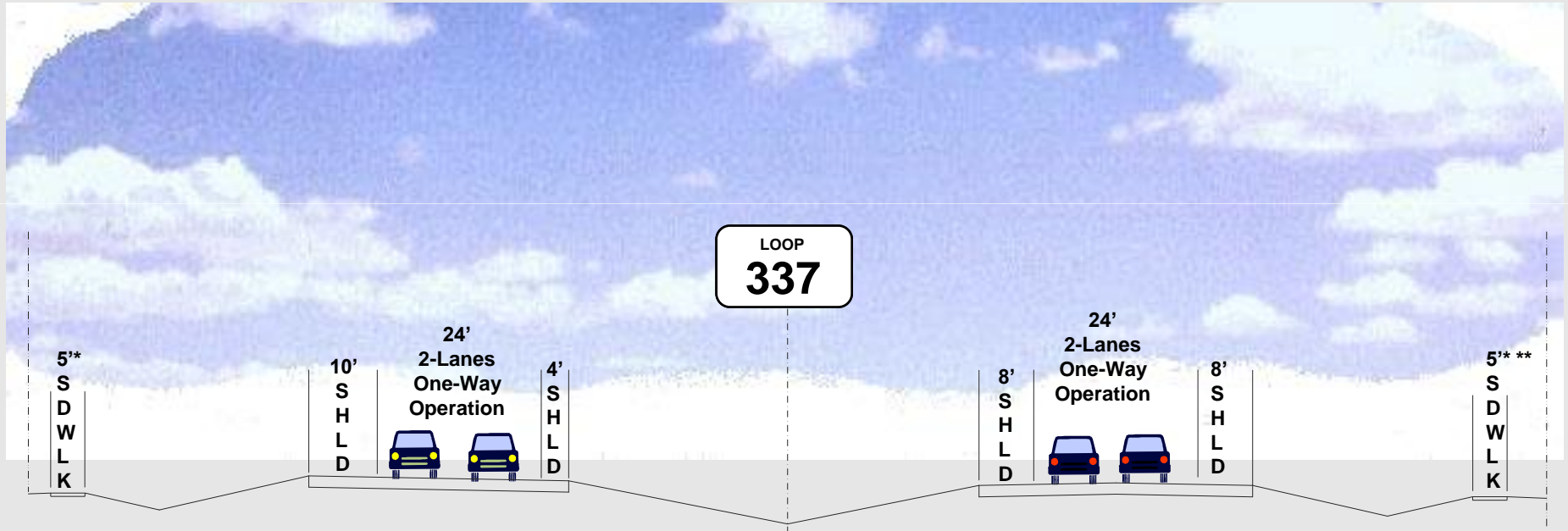
- Upgrade the existing Loop 337 roadway from two lanes undivided to a four-lane divided facility
- Wide grassy median
- Sidewalks added from Rivercrest Drive to River Terrace and from River Road to SH 46
- No additional ROW required
- Total project length = approximately 6.7 Miles

Typical Section



***Existing Loop 337
Typical Section***

Typical Section



*From Rivercrest to River Terrace

*From Rivercrest to River Terrace
**From River Road To SH 46

Proposed Loop 337 Typical Section

Environmental Studies

- No disproportionately high or adverse effects on minority or low income populations anticipated
- Traffic Noise Analysis is being performed
- Geologic Assessment is being performed
- Cultural resource (historical and archeological) studies are currently underway
- Biological Resources Evaluation is being performed
- Jurisdictional determination/ water resources study is being performed; no impacts to wetlands are anticipated
- Portions of the proposed project are located over the recharge and transition zones of the Edwards Aquifer
- Portions of the proposed project are located within a Federal Emergency Management Agency (FEMA) designated 100-year floodplain

- Current Let Date:
Spring 2017

- Estimated Construction Duration:
3 – 3 1/2 years

Current Estimated Construction Cost:
\$ 45 Million



- \$8.5 million from the Alamo Area Metropolitan Planning Organization
- \$31.5 million from State funds
- \$5 million local contribution

Provide Your Comments

Options for Commenting

1. Give comment card to TxDOT staff tonight
2. Provide comments to onsite court reporter
3. Fax comments to: (512) 338-2225, Attn: Emily Reed
4. Mail comments to: Cox McLain Environmental Consulting, Inc.
Attn: Emily Reed
6010 Balcones Drive, Suite 210
Austin, Texas 78731-3601
5. Email comments to: loop337project@coxmcclain.com

Deadline for comments: November 22, 2015

Meeting materials and project information will be posted at <https://goo.gl/EIQh7i>

***Thank You for Your
Participation!***

