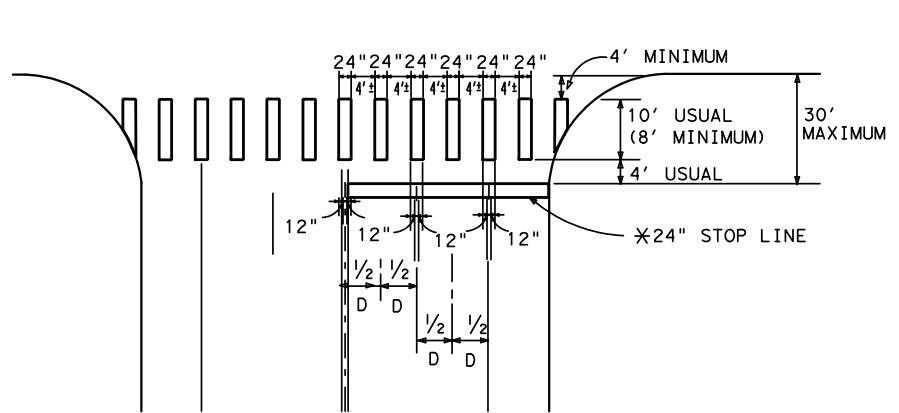
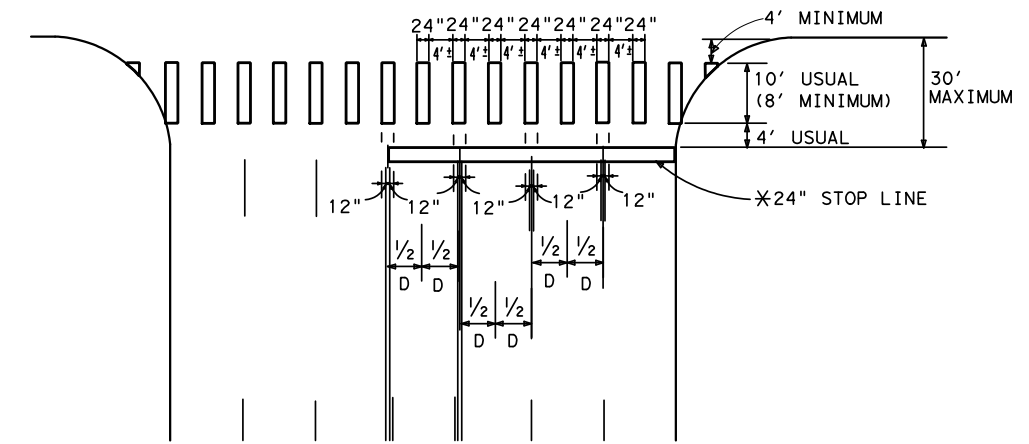


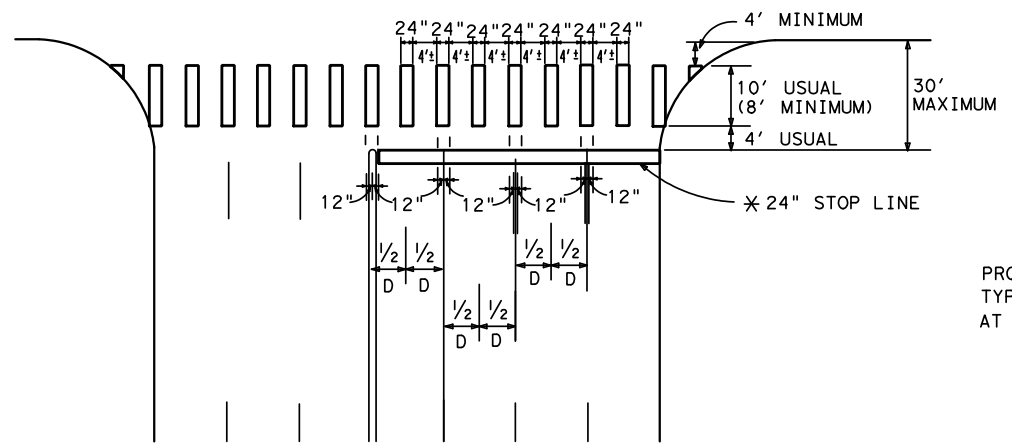
TWO LANES WITH SHOULDERS



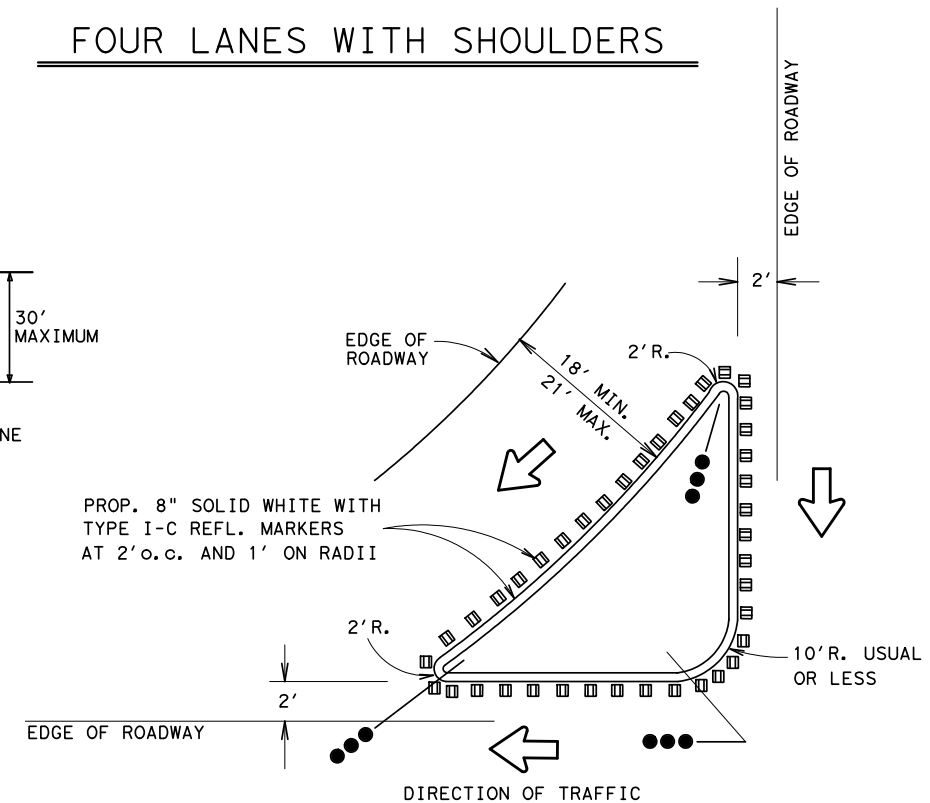
FOUR LANES WITH SHOULDERS



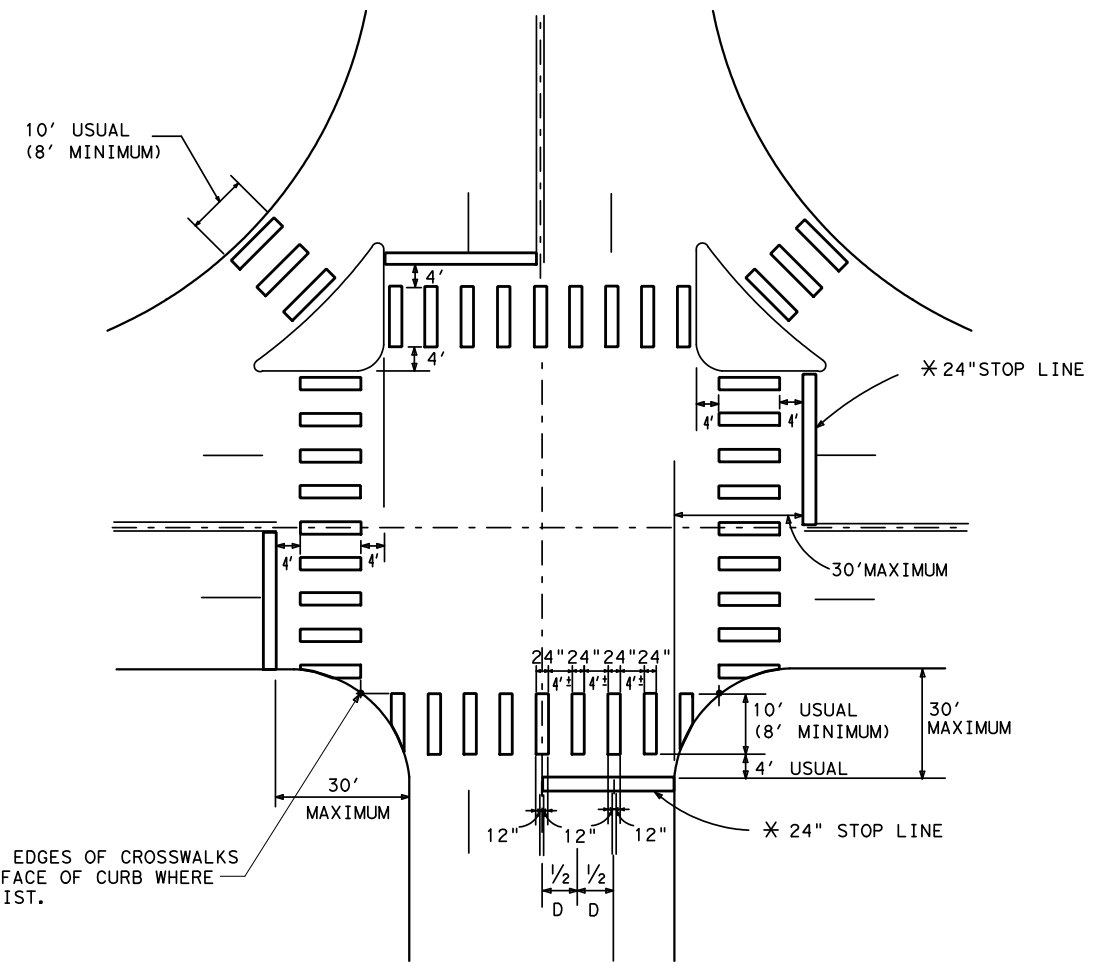
MULTI - LANES



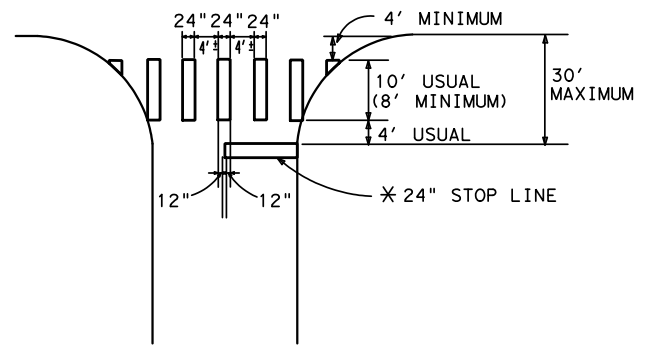
MULTI - LANE WITH MEDIAN



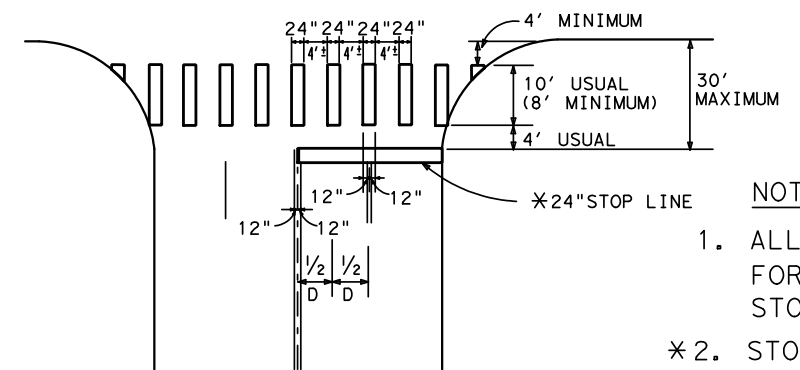
TYPICAL RIGHT TURN ISLAND WITH DELINEATION



INTERSECTION WITH RIGHT - TURN ISLANDS



TWO LANES



FOUR LANES

- NOTES:**
1. ALL LONGITUDINAL LINES FORMING CROSSWALK AND STOP LINES SHALL BE WHITE
 - * 2. STOP LINES AS REQUIRED ON DETAILED PAVEMENT MARKING PLANS.
 3. "D" IS EQUAL TO ONE HALF THE DISTANCE.

LEVELS DISPLAYED

1	2	3	4	5	6	7	8	9	10	11	12	13	14	15	16
17	18	19	20	21	22	23	24	25	26	27	28	29	30	31	32
33	34	35	36	37	38	39	40	41	42	43	44	45	46	47	48
49	50	51	52	53	54	55	56	57	58	59	60	61	62	63	

ACC:

San Antonio District Standard
TYPICAL CROSSWALK DETAILS
 TCD-05
 © 2006 Texas Department of Transportation

REVISIONS	FED. RD. DIV. NO.	FEDERAL AID PROJECT NO.	SHEET NO.
DEC 1999	6		
AUG 2005			
STATE	DIST.	COUNTY	
TEXAS	SAT		
CONT.	SECT.	JOB	HIGHWAY NO.