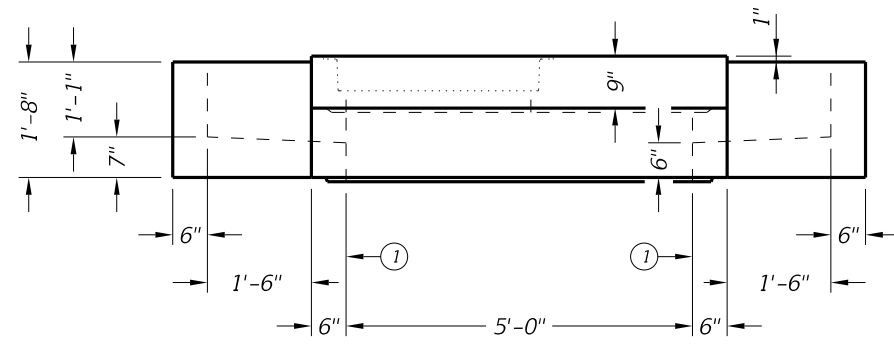
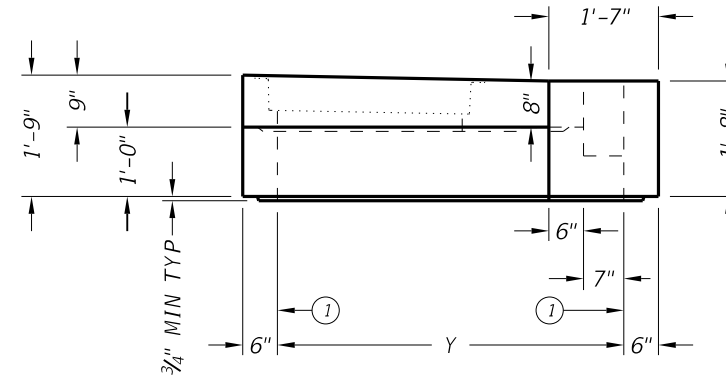


DISCLAIMER: The use of this standard is governed by the "Texas Engineering Practice Act". No warranty of any kind is made by TxDOT for any purpose whatsoever. TxDOT assumes no responsibility for the conversion of this standard to other formats or for incorrect results or damages resulting from its use.

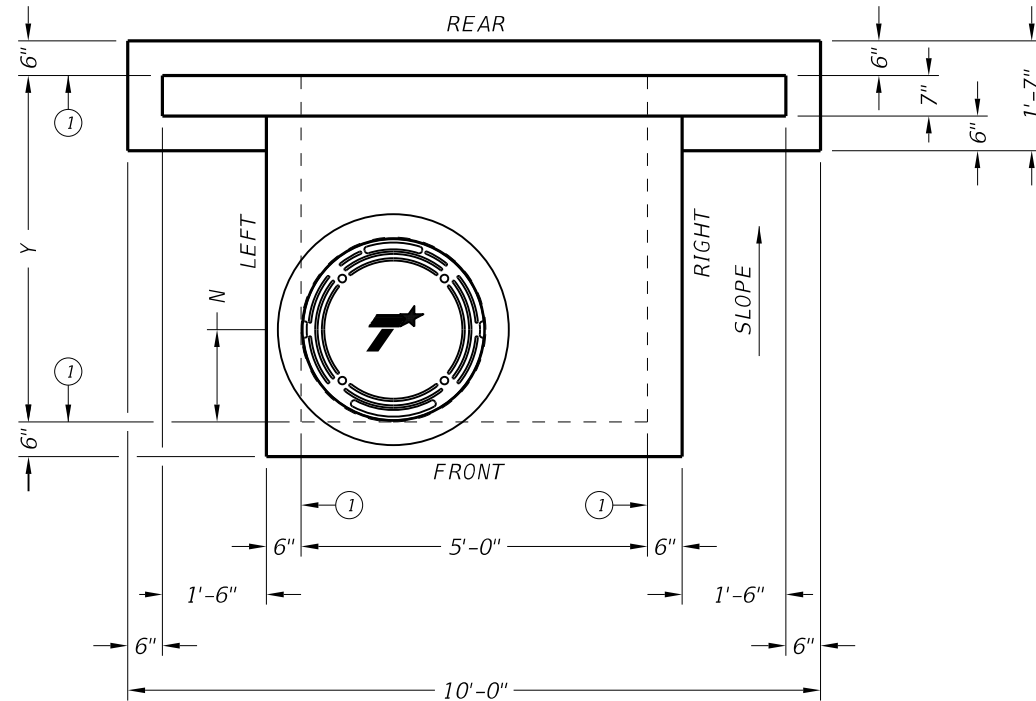


FRONT VIEW

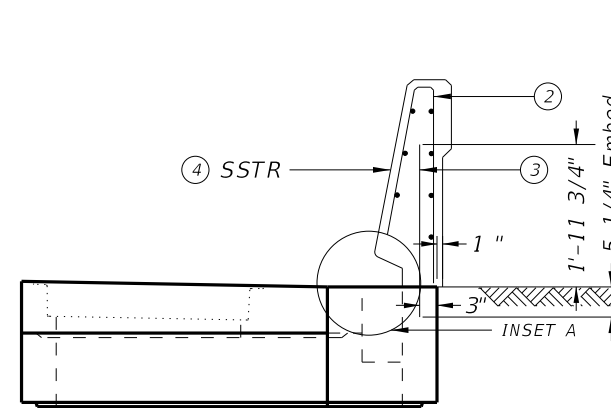


RIGHT VIEW

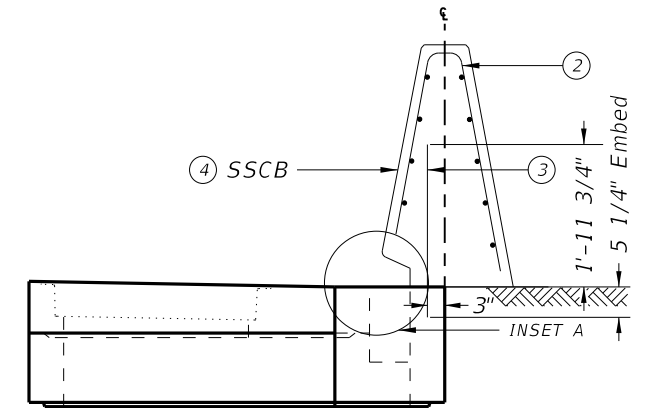
- ① Matches inside face of wall of precast base or riser below inlet.
- ② See SSCB and SSTR standards for reinforcing steel and additional details. Reinforcement around the drainage slots may be cut or bent to accommodate the edge and top clearances.
- ③ Embed (#6) anchor bars with a Type III, Class C, D, E, or F anchor adhesive every 12". Minimum adhesive anchor embedment depth is 5 1/4". Anchor adhesive chosen must be able to achieve a basic bond strength in tension, Nba, of 20 kips. Submit signed and sealed calculations or the manufacturer's published literature showing the proposed anchor adhesive's ability to develop this load to the Engineer for approval prior to use. Anchor installation, including hole size, drilling, and clean out, must be in accordance with Item 450, "Railing". The materials, labor and equipment to perform this work will be paid under the bid item 465 for PMBD (MOD).
- ④ The SSCB and SSTR over the inlet must be cast in place. The SSCB and SSTR over the inlet and drainage opening shown in "Inset A" will be paid for under Item 450 or 514.



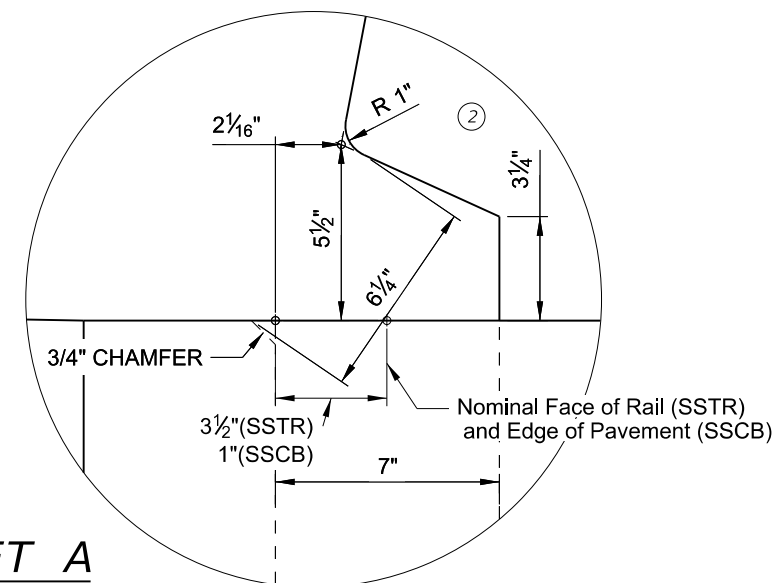
PLAN VIEW



SSTR BARRIER PLACEMENT DETAIL



SSCB BARRIER PLACEMENT DETAIL



INSET A

HL93 LOADING SHEET 1 OF 2



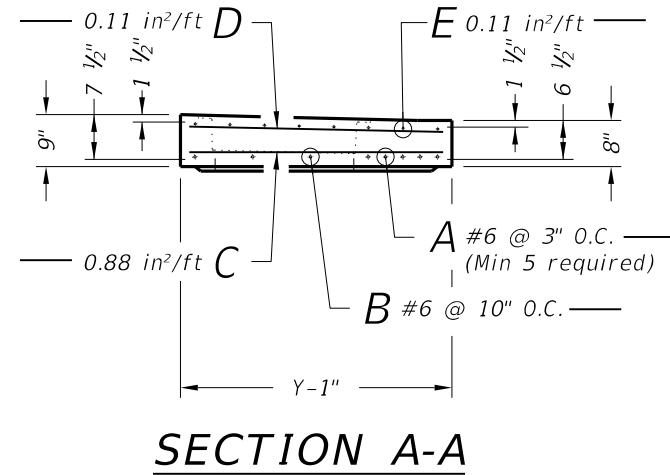
PRECAST MEDIAN BARRIER DRAIN (MOD)

PMBD (MOD)

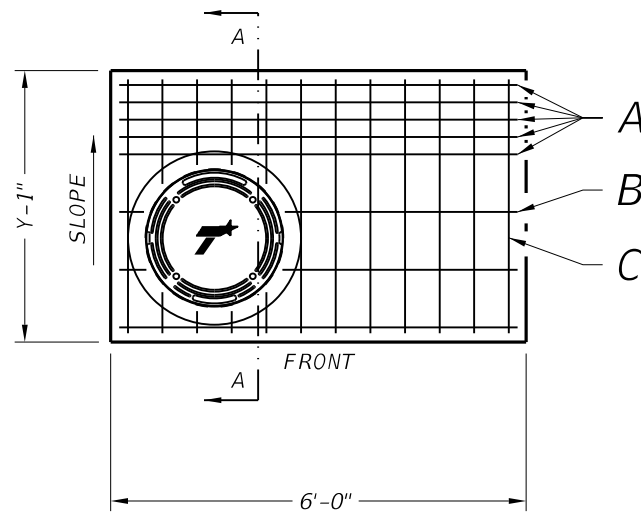
| | | | | |
|-------------------------|-----------|-----------|-----------|-----------|
| FILE: SAT-PMBD(MOD).dgn | DN: TxDOT | CK: TxDOT | DW: TxDOT | CK: TxDOT |
| ©TxDOT June 2020 | CONT | SECT | JOB | HIGHWAY |
| REVISIONS | | | | |
| | DIST | COUNTY | | SHEET NO. |

DATE:
FILE:

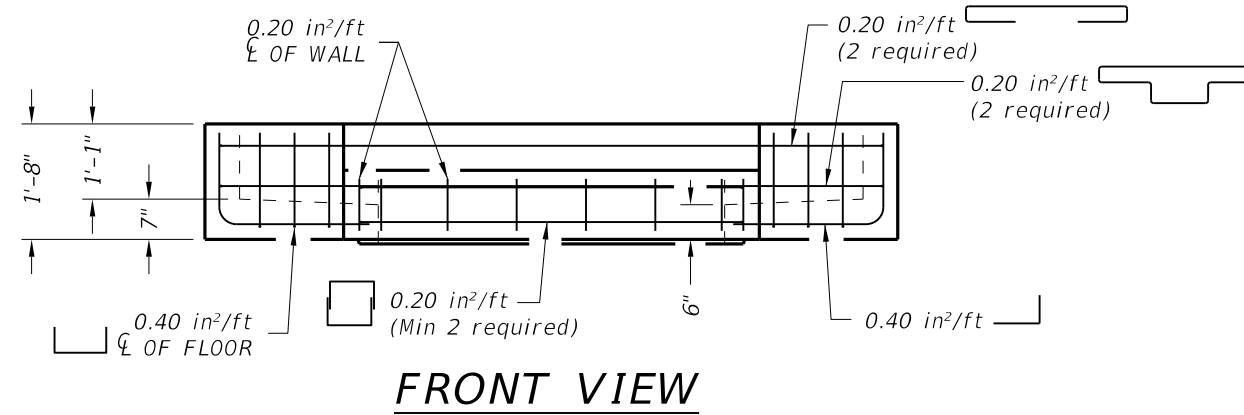
DISCLAIMER: The use of this standard is governed by the "Texas Engineering Practice Act". No warranty of any kind is made by TxDOT for any purpose whatsoever. TxDOT assumes no responsibility for the conversion of this standard to other formats or for incorrect results or damages resulting from its use.



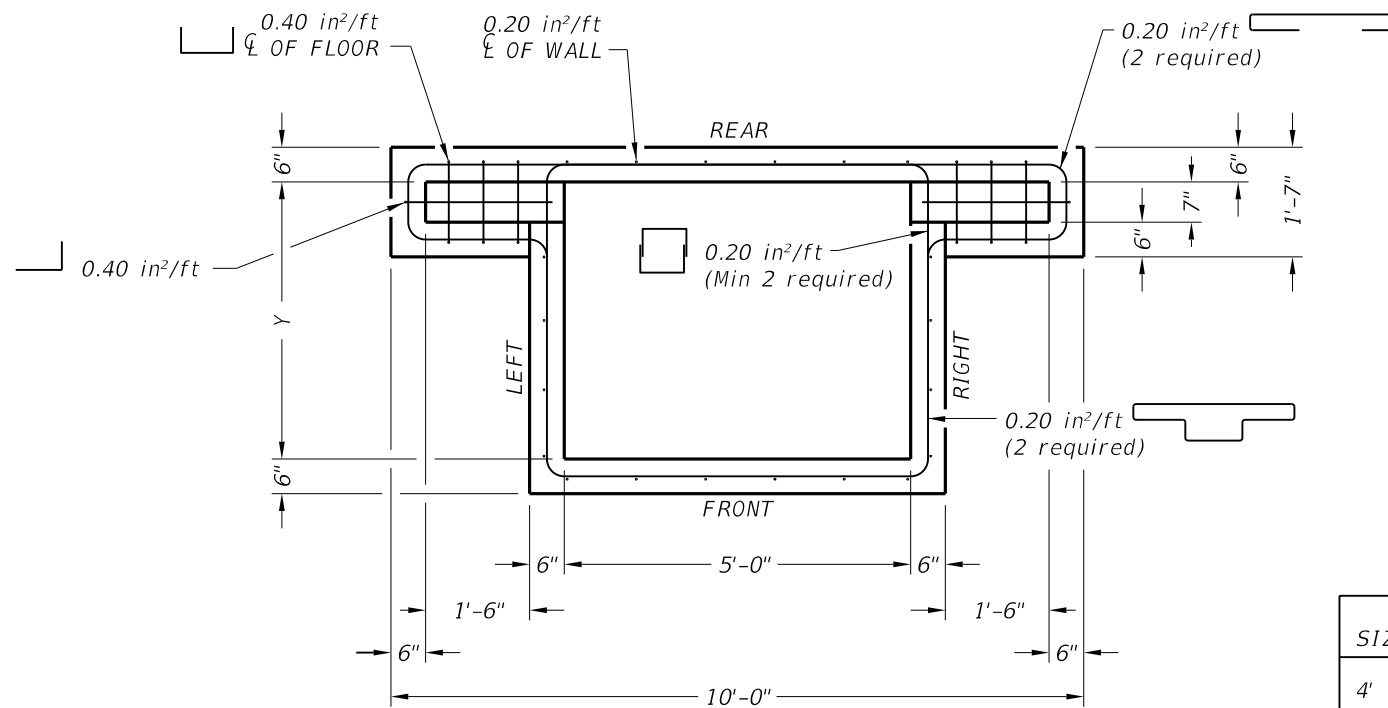
SECTION A-A



PLAN VIEW TOP SLAB
(BOTTOM MAT SHOWN)



FRONT VIEW



PLAN VIEW RISER

| SIZE (Y) | MH DIA* | N |
|----------|---------|-----|
| 4' | 24" | 12" |
| 5' | 32" | 16" |
| 6' | 32" | 16" |

*Nominal ring and cover size.

FABRICATION NOTES:

1. Provide Class "H" concrete in accordance with Item 421 and having a minimum compressive strength of 5,000 psi.
2. Provide Grade 60 reinforcing steel or equivalent area of WWR.
3. Design tongue and groove joints for full closure on both shoulders. Minimum spigot depth is $\frac{3}{4}$ ".
4. Provide lifting devices in conformance with Manufacturer's recommendations.
5. Provide cast iron solid cover, unless noted otherwise elsewhere in plans.

INSTALLATION NOTES:

1. Seal tongue and groove joints with preformed or bulk mastic in conformance with Manufacturer's recommendations. Tongue and groove joints may be grouted no more than 1" between each section, or $\frac{1}{2}$ the joint depth, whichever is greater.
2. Do not grout rubber gasket joints without Manufacturer's recommendation.
3. When pinned precast median barrier is used, longitudinally adjust pin locations to avoid drilling into the PMBD inlet. When CIP median barrier is anchored to CRCP, transversely adjust anchorage bar to avoid conflicting with the PMBD inlet.

GENERAL NOTES:

1. Designed according to ASTM C913.
2. Open area of throat = 756 sq in.
3. Payment for inlet is per Item 465, "Junction Boxes, Manholes, and Inlets" by type and size.

Cover dimensions are clear dimensions, unless noted otherwise.



PRECAST MEDIAN BARRIER DRAIN (MOD)

PMBD (MOD)

| | | | | |
|-------------------------|-----------|-----------|-----------|-----------|
| FILE: SAT-PMBD(MOD).dgn | DN: TxDOT | CK: TxDOT | DW: TxDOT | CK: TxDOT |
| ©TxDOT June 2020 | CONT | SECT | JOB | HIGHWAY |
| REVISIONS | DIST | COUNTY | SHEET NO. | |

DATE:
FILE: