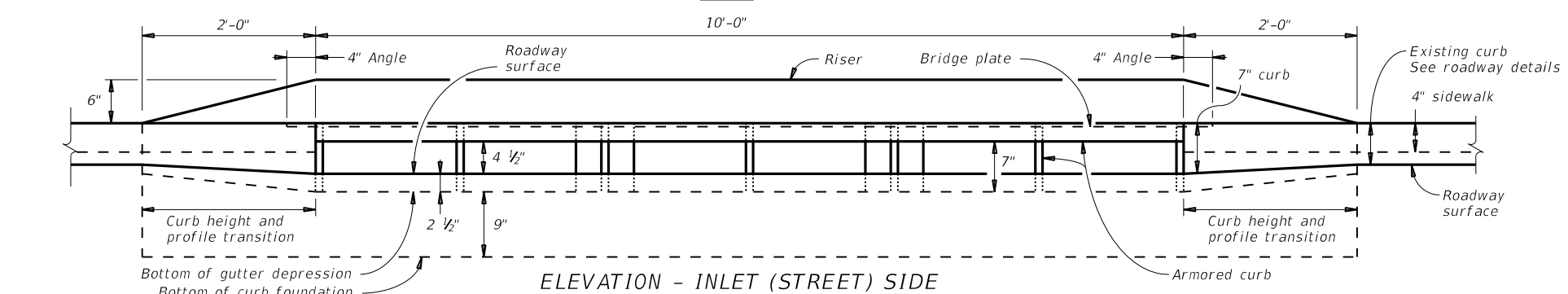
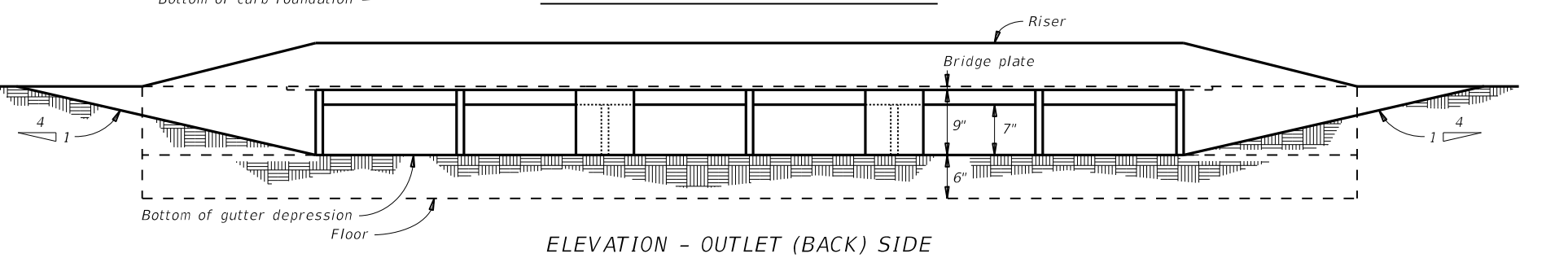


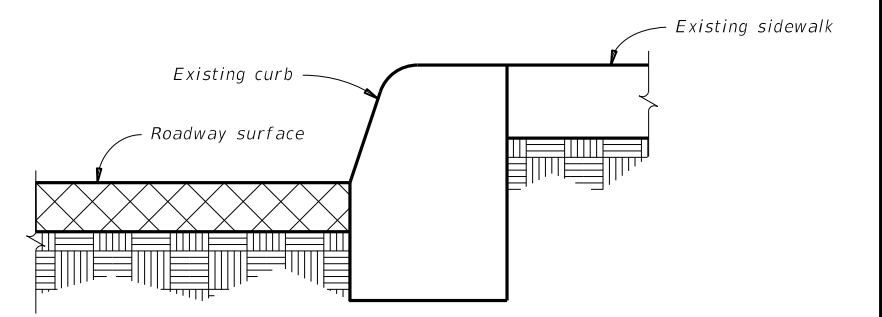
PLAN



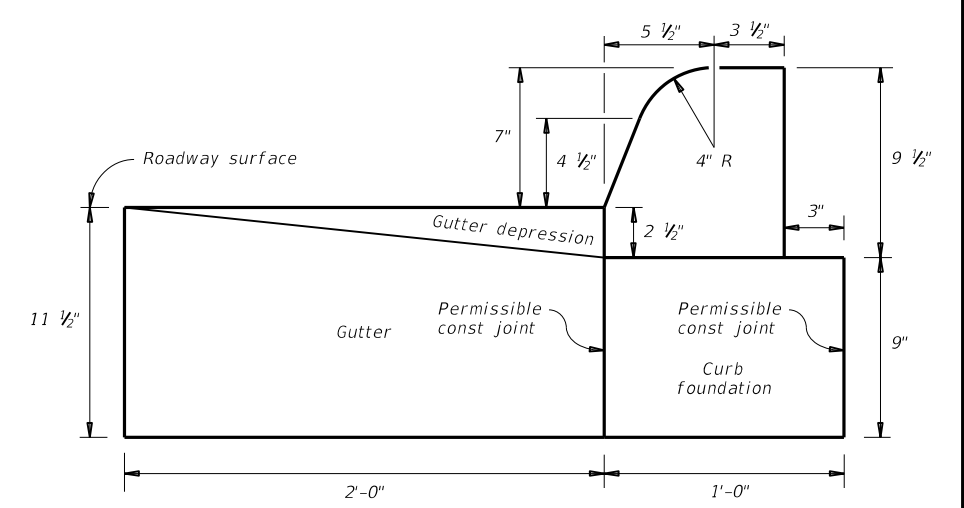
ELEVATION - INLET (STREET) SIDE



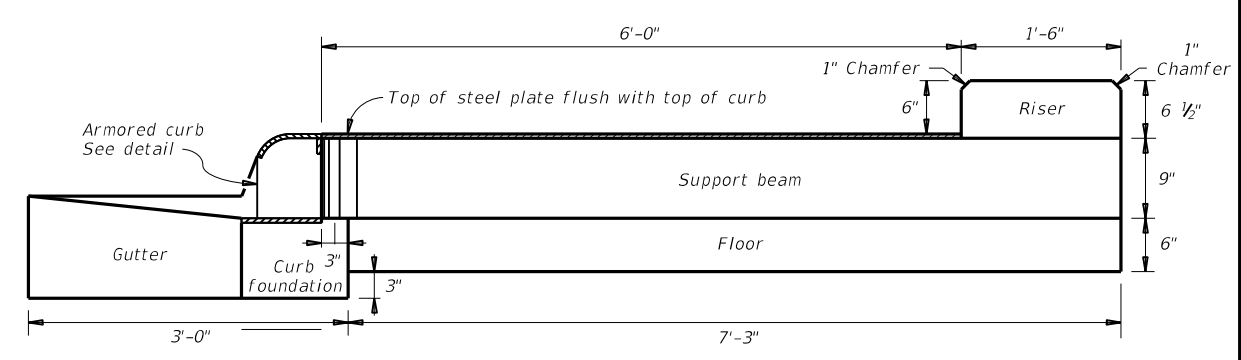
ELEVATION - OUTLET (BACK) SIDE



SECTION A



SECTION B DIMENSIONS



SECTION C DIMENSIONS

Cover dimensions are clear dimensions, unless noted otherwise. Reinforcing bar dimensions are out-to-out of bar.
Contractor is responsible for verifying all dimensions and quantities in the field before beginning work.

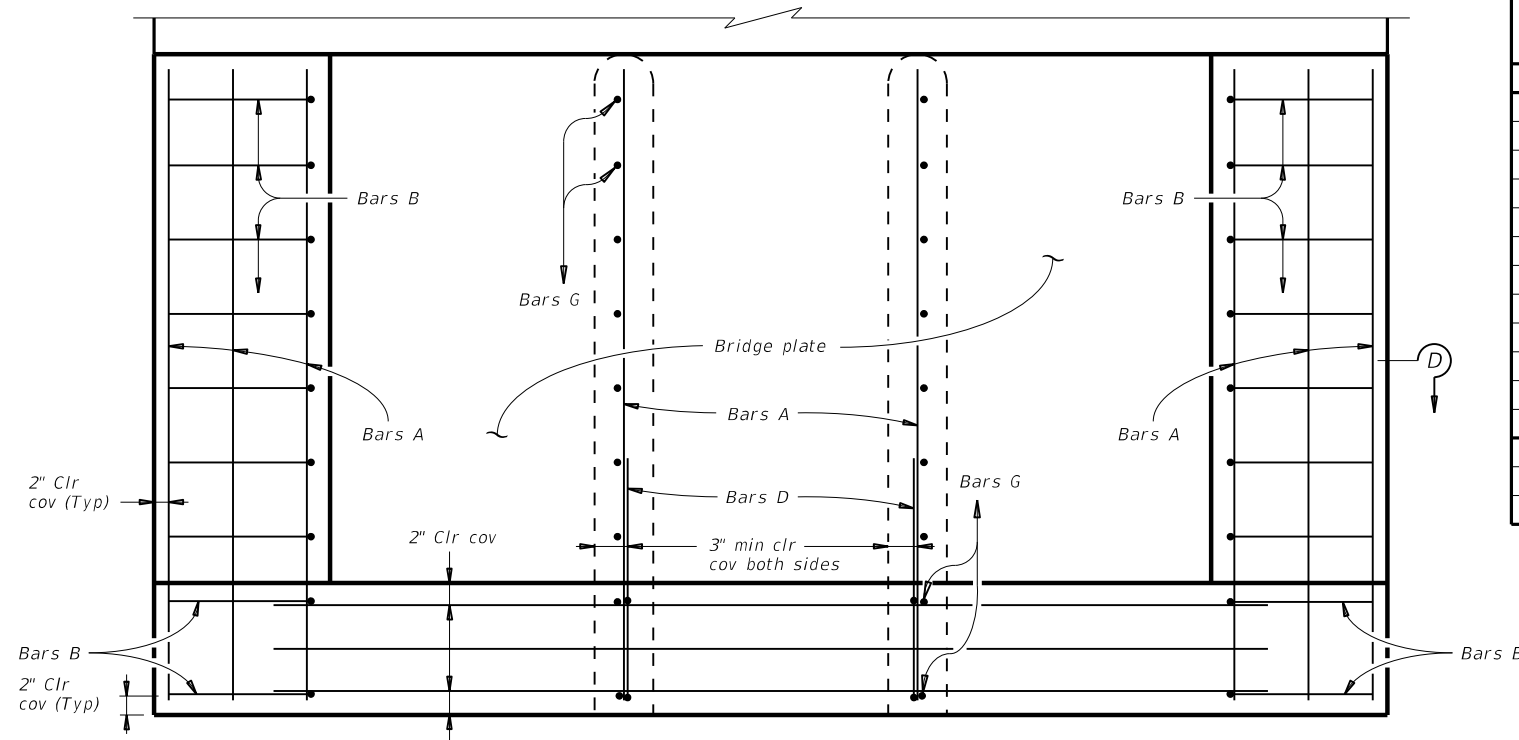
SHEET 1 OF 3

Texas Department of Transportation
San Antonio District (Structural Design)
© 2020 Prepared by and for the use of TxDOT

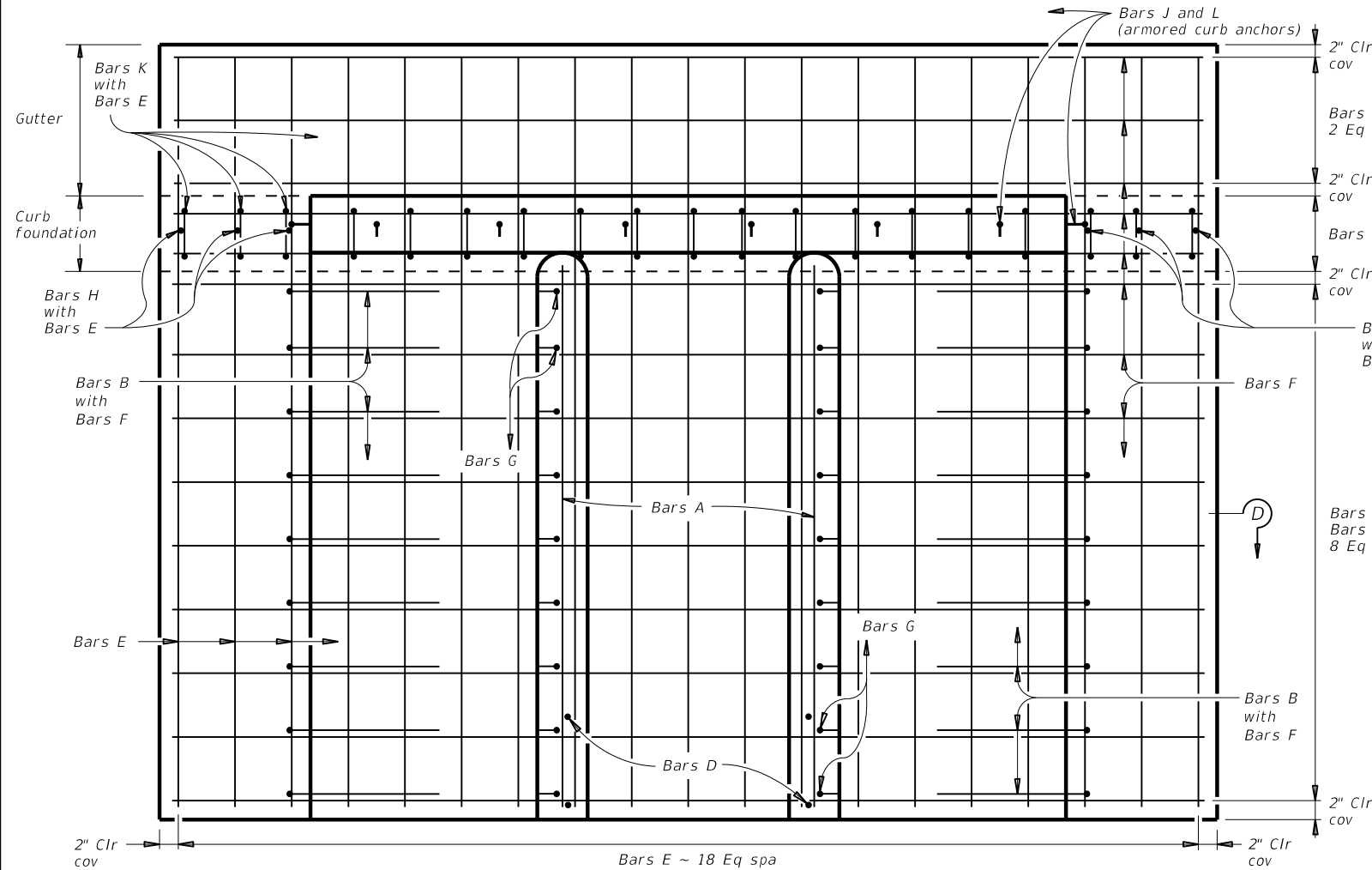
SIDEWALK BRIDGE
SAN ANTONIO DISTRICT STANDARD

DN: BCL	CK:	FILENAME: SA District Sidewalk Bridge.dgn		
DW: SRF	CK:	ORIGINAL DRAWING DATE: January 2020		
DIST	FED. RD. DIV. NO.	FEDERAL AID PROJECT NO.	COUNTY	
SAT	6		COUNTY	
CONTROL	SECTION	JOB	SHEET NO.	ROUTE
0000	00	000	000	ROUTE

REVISIONS:



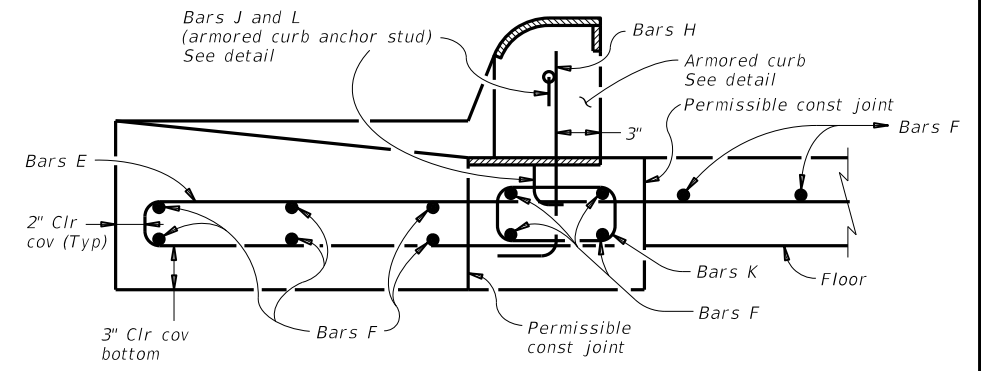
PLAN - TOP REINFORCEMENT



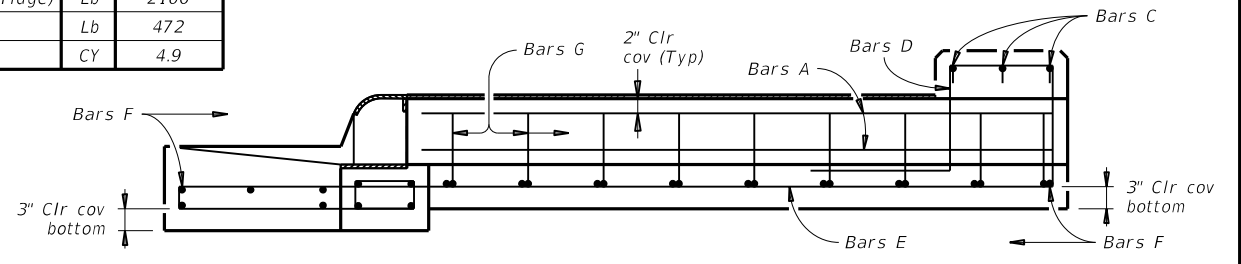
PLAN - BOTTOM REINFORCEMENT

TABLE OF ESTIMATED QUANTITIES
For Contractor information only.

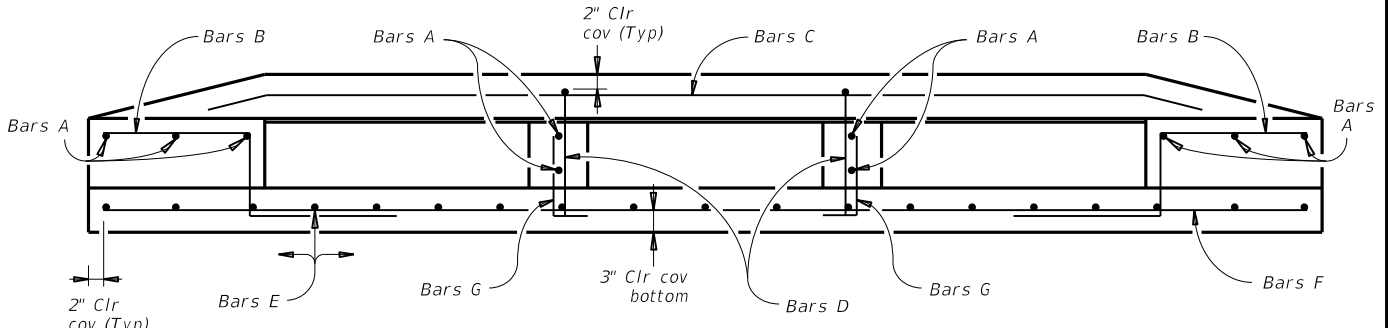
Bar	No.	Size	Length	Weight
A	10	#4	7'-2"	48
B	18	#4	4'-3"	52
C	3	#4	11'-4"	23
D	2	#4	5'-6"	8
E	19	#4	12'-10"	163
F	14	#4	13'-8"	128
G	18	#4	1'-6"	18
H	6	#4	1'-10"	8
I	6	#4	0'-8"	3
J	2	#4	0'-9"	1
K	19	#3	2'-6"	18
L	6	#4	0'-5"	2
Struct. steel (Misc. non bridge)				Lb 2100
Reinforcing Steel				Lb 472
Class "C" Concrete				CY 4.9



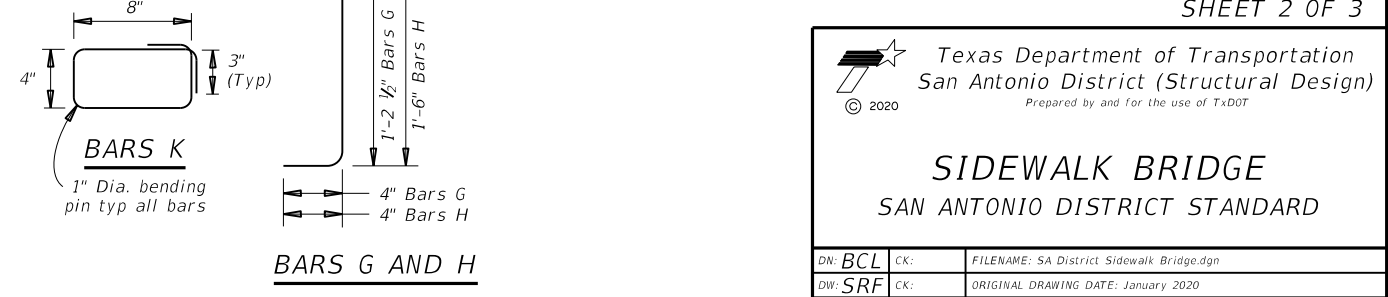
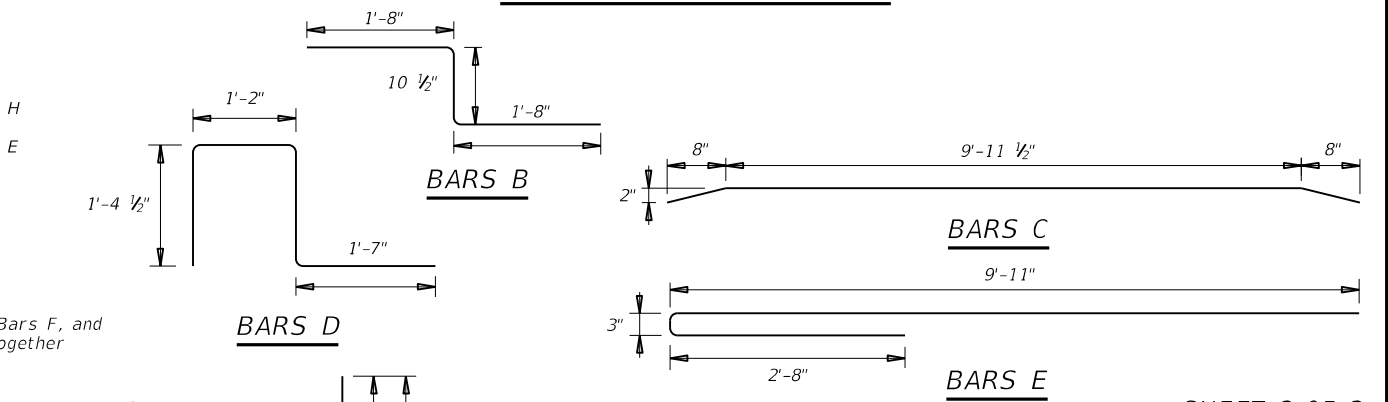
SECTION B REINFORCEMENT



SECTION C REINFORCEMENT



SECTION D REINFORCEMENT



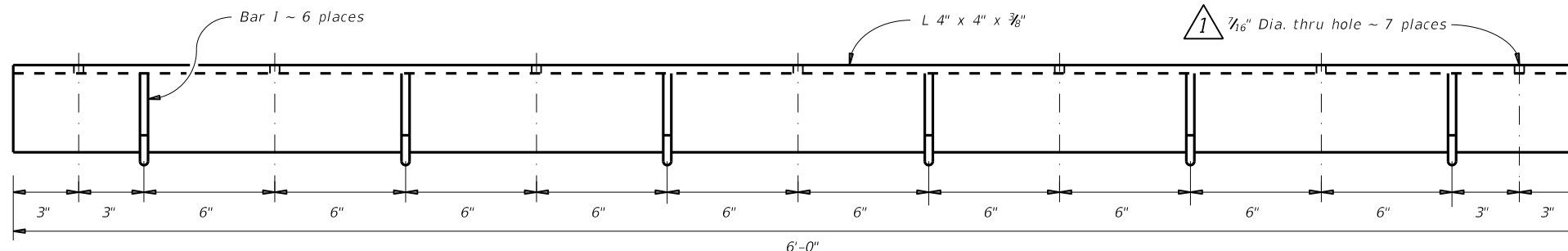
Cover dimensions are clear dimensions, unless noted otherwise. Reinforcing bar dimensions are out-to-out of bar.

Contractor is responsible for verifying all dimensions and quantities in the field before beginning work.

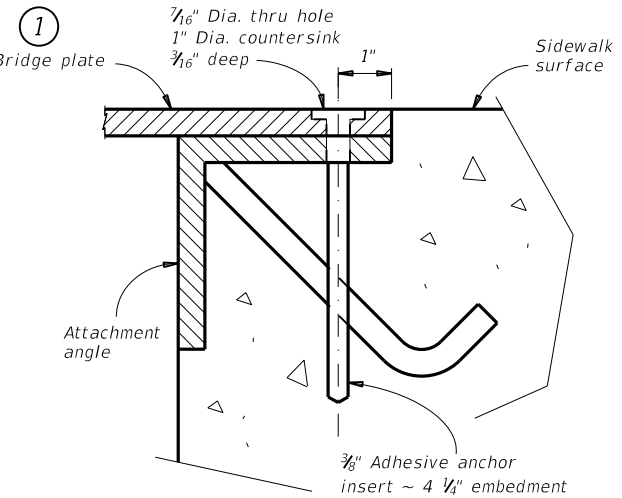
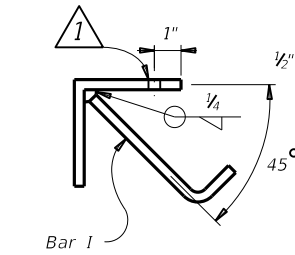
SIDEWALK BRIDGE
SAN ANTONIO DISTRICT STANDARD

DN: BCL	CK:	FILENAME: SA District Sidewalk Bridge.dgn
DW: SRF	CK:	ORIGINAL DRAWING DATE: January 2020
DIST: SAT	FED. RD. DIV. NO.: 6	COUNTY: COUNTY
CONTROL: 0000	SECTION: 00	JOB: 000
	SHEET NO.: 000	ROUTE: ROUTE

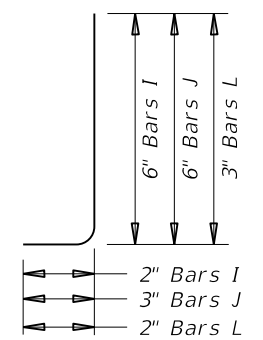
REVISIONS:



BRIDGE PLATE ATTACHMENT ANGLE
Two required

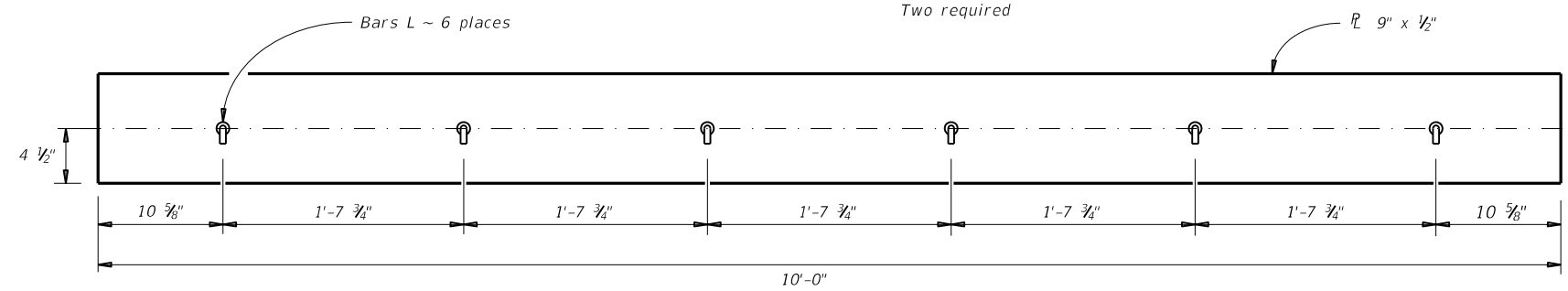


SECTION E



BARS I, J, AND L

APPROVED SLIP RESISTANT PLATE	
Product	Manufacturer Website
Algrip™, Steel	www.algrip.com
Mebac® #3, Steel	www.harscoikg.com
SlipNOT® Grade 2, Steel	www.slipnot.com

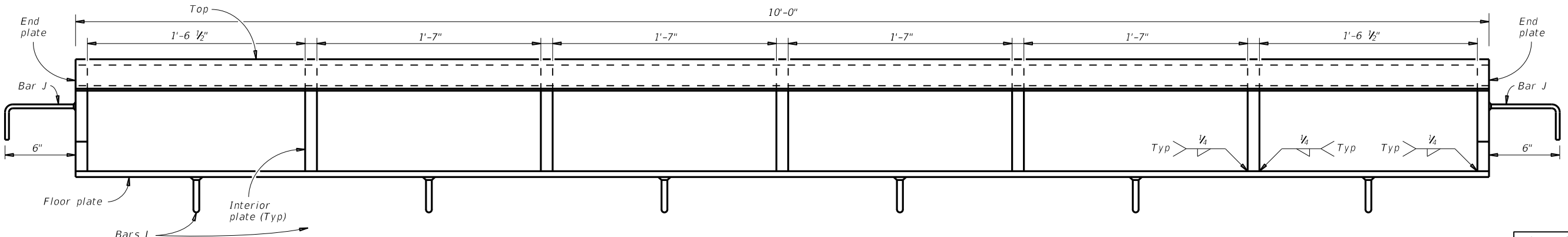


FLOOR PLATE

GENERAL NOTES:

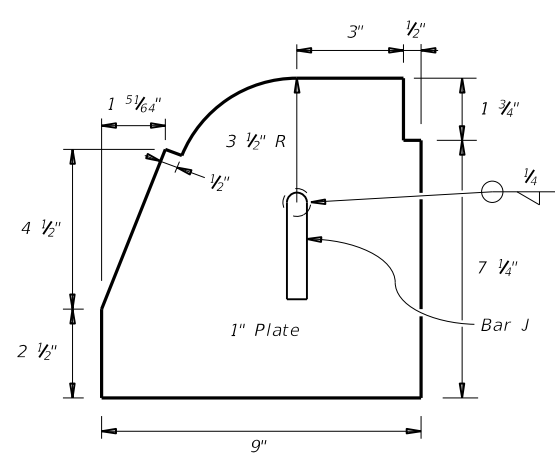
- Provide Class A concrete ($f'c = 3000$ psi).
- Provide Grade 60 reinforcing steel.
- Structural steel components must be Grade A36.
- All exposed edges of the armored curb must receive a $1/8$ " bevel.
- All structural steel components must be galvanized after fabrication in accordance with Item 445, "Galvanizing".
- Galvanizing damaged during transport or construction must be repaired in accordance with the Specification.
- The bridge plate must be hot-dip galvanized slip resistant steel (see table). Checker or diamond plate is not allowed, nor are slip resistant tapes, films, or non-metallic coatings.
- Adhesive anchor system must be HIT HY 150 H.I.S. internally threaded inserts as furnished by Hilti, Inc., Tulsa, OK, or approved equivalent.
- Sidewalk bridge, including all labor, armored curb, bridge plate, and other material complete and in place must be paid for under Item 465, "Inlet (Comp) (Ty Sidewalk Bridge)" by location.
- Shop drawings will not require the Engineer's approval if fabrication is in accordance with the details shown.

① Provide cover plates fabricated with a product from this list. No exceptions are permitted.

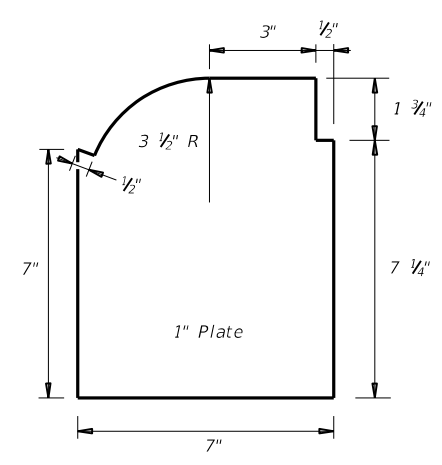


ARMORED CURB ASSEMBLY INLET ELEVATION

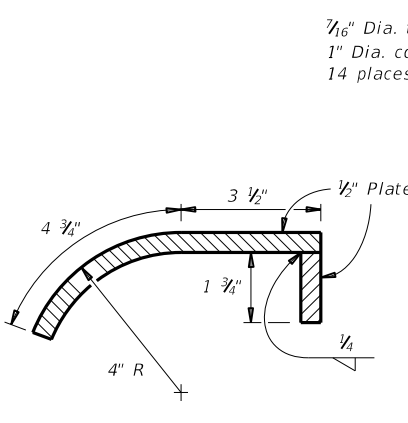
Cover dimensions are clear dimensions, unless noted otherwise. Reinforcing bar dimensions are out-to-out of bar.
Contractor is responsible for verifying all dimensions and quantities in the field before beginning work.



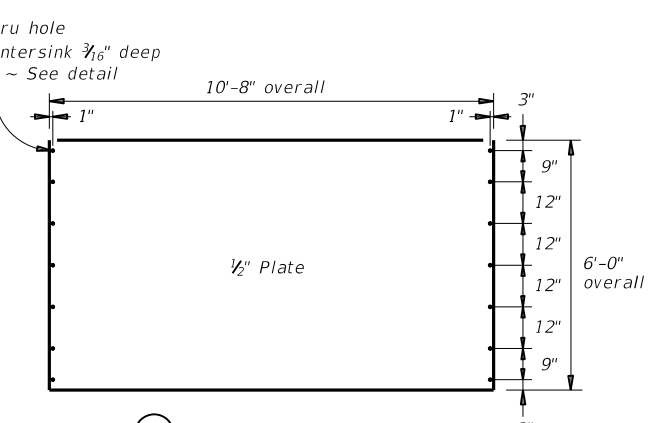
END PLATE
Two required



INTERIOR PLATE
Five required



TOP (SECTION)
10'-0" length



① **BRIDGE PLATE**

Hole location dimensions to center of hole

Texas Department of Transportation
San Antonio District (Structural Design)
© 2020 Prepared by and for the use of TxDOT

SIDEWALK BRIDGE
SAN ANTONIO DISTRICT STANDARD

DN: BCL	CK:	FILENAME: SA District Sidewalk Bridge.dgn		
DW: SRF	CK:	ORIGINAL DRAWING DATE: January 2020		
DIST	FED. RD. DIV. NO.	FEDERAL AID PROJECT NO.	COUNTY	
SAT	6		COUNTY	
CONTROL	SECTION	JOB	SHEET NO.	ROUTE
0000	00	000	000	ROUTE

REVISIONS:
① 12/7/22 Corrected hole placement error. Moved holes from side to top of angle.