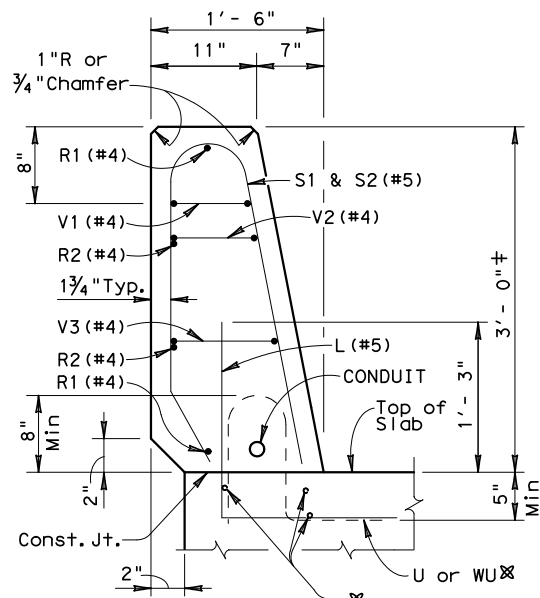


**BRIDGE LIGHTING-SSTR  
MOUNT DETAIL**

▲ FOUR 1/4" ANCHOR BOLTS (ASTM A193 GRADE B7 WITH THE TOP THREADED NOT LESS THAN 6 INCHES) OR ANCHOR RODS (ASTM A321). THE TOP END OF THE BOLTS OR RODS SHALL BE GALVANIZED NOT LESS THAN 8 INCHES AND FURNISHED WITH NUTS (ASTM A563, GRADE DH, GALVANIZED, HEAVY HEX) AND FLAT AND LOCK WASHERS. THE LOWER END OF THE BOLTS OR RODS SHALL BE FURNISHED WITH NUTS AND WASHERS. THE NUT SHALL BE TACK WELDED TO THE BOLTS OR ROD.

⊕ ANCHOR BOLT TEMPLATES SHALL BE PLACED AS SHOWN PRIOR TO PLACEMENT OF CONCRETE. AFTER CONCRETE IS POURED AND CURED THE TOP TEMPLATE SHALL BE REMOVED AND REPLACED WITH BASE PLATE AND POLE.



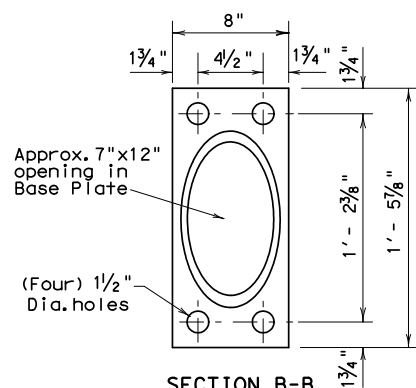
**SECTION A-A**  
(SHOWING ADDITIONAL REINFORCING FOR BRIDGE LIGHTING SSTR)  
‡ Increase 2" for overlay

BAR	SIZE	QUANTITY
L	#5	8
R1	#4	2
R2	#4	2
S1	#5	4
S2	#5	4
V1	#4	2
V2	#4	2
V3	#4	2

Schedule of additional reinforcement for each 10 foot cast-in-place section at light poles (excluding anchors)

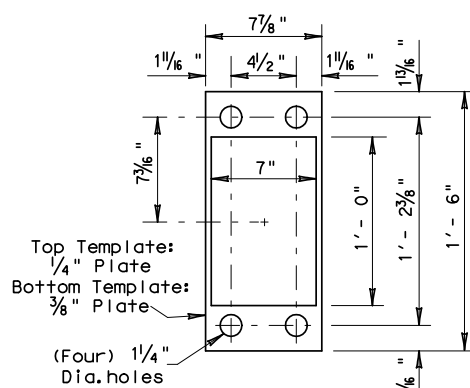
**GENERAL NOTES**

1. Poles on bridge rail shall be grounded using a ground rod and grounding conductor to each pole.
2. Anchor bolts, ground rods, junction box and rigid metal conduit as shown shall not be paid for directly, but will be considered subsidiary to the light pole.
3. Use special pole designation Roadway Illumination Assemblies. Example: (TY SP48S-8-8) (.4KW), where length of arm is 8 feet. (See Roadway Illumination Detail standards)
4. All conduit bends shall be in accordance with the National Electric Code.
5. 3/4" liquidtight flexible metal conduit may be used in lieu of 3/4" rigid metal conduit from the junction box to light pole base, except that 6 inches of conduit before and all conduit after exiting the concrete shall be rigid metal. Liquidtight flexible metal conduit shall be approved for use grounding conductor. The total length of all liquidtight as a flexible metal conduit in any ground return path shall be a maximum of six feet. The conduit shall be terminated in fittings listed for grounding. Branch circuits for rail mounted poles shall be on 60 amp breakers maximum.
6. Junction box shall be cast iron. See Electrical Detail standards for types.
7. Alternate forming methods may be used only with the prior approval of the Engineer.
8. This Bridge Lighting Detail is to be used with the State Standard "Single Slope Traffic Railing TYPE SSTR".

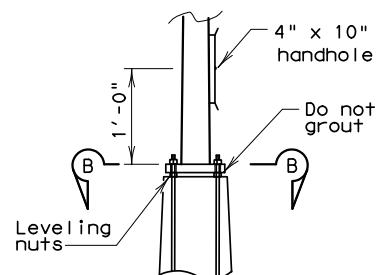


**SECTION B-B  
BASE PLATE**

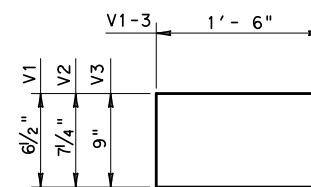
SHAPE OF POLE MAY BE ELLIPTICAL OR POLYGONAL PLATE, BOLTS, NUTS, etc. ARE SUBSIDIARY TO THE POLE



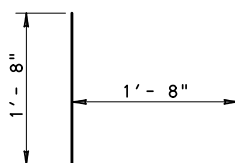
**ANCHOR BOLT TEMPLATE**



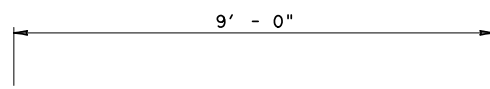
**POLE DETAIL**



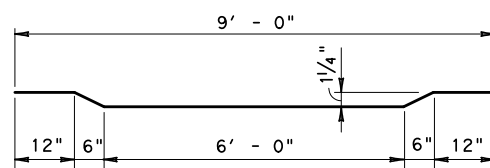
**BARS V1-3 (#4)**



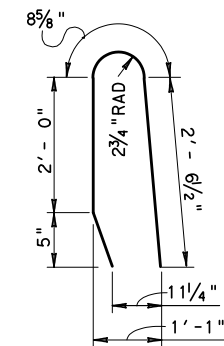
**BARS L (#5)**



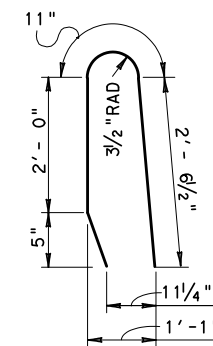
**BARS R1 (#4)**



**BARS R2 (#4)**



**BARS S1 (#5)**



**BARS S2 (#5)**

© 2005 Texas Department of Transportation  
San Antonio District (Structural Design)

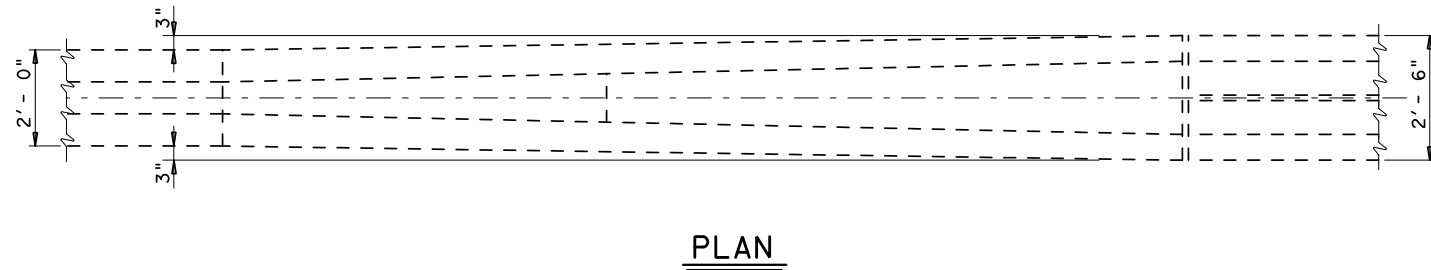
**BRIDGE LIGHTING  
DETAIL FOR SSTR**

SAN ANTONIO DISTRICT STANDARD

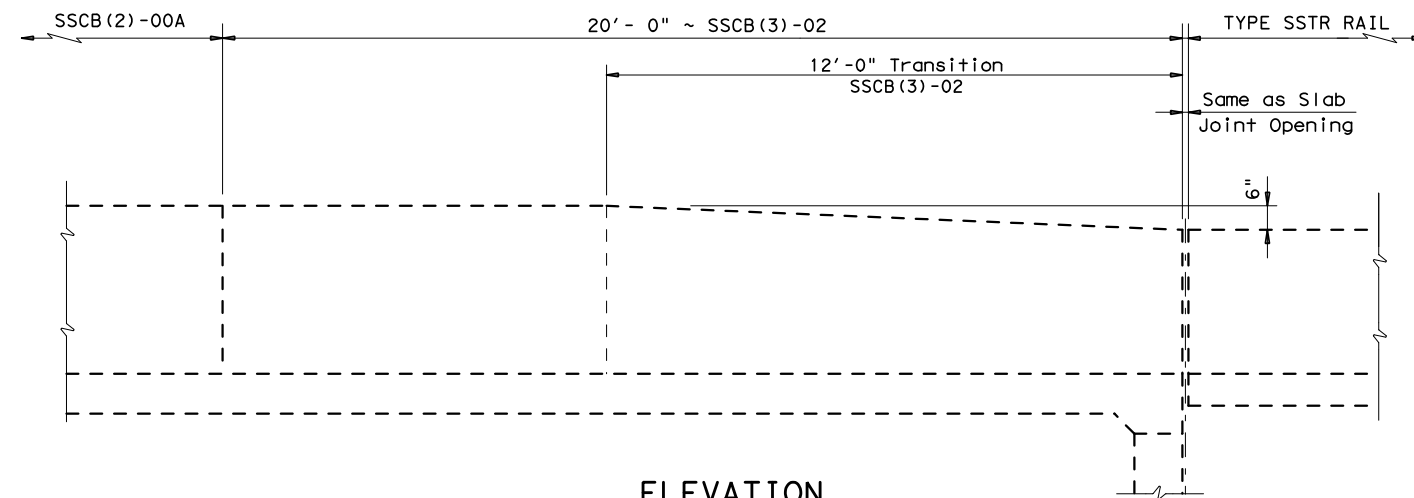
**BL-SSTR**

T:\Engdata\Bridge\DistStds\Working\blsstr\blsstrSA.dgn PREPARED BY AND FOR USE OF TxDOT.  
ORIGINAL DRAWING DATE: NOV. 2000 STATE FEDERAL DISTRICT REGION FEDERAL AID PROJECT SHEET  
DNL GPG REVISIONS SAT 6  
CK JHK 11-14-03 Changed title to Bridge Light Detail For SSTR to be used with SSTR State Std.  
DW MRM - - with SSTR State Std.  
CK GPG 08-11-05 Add Bars "L" to Slab

COUNTY	CONTROL	SECTION	JOB	HIGHWAY
--------	---------	---------	-----	---------

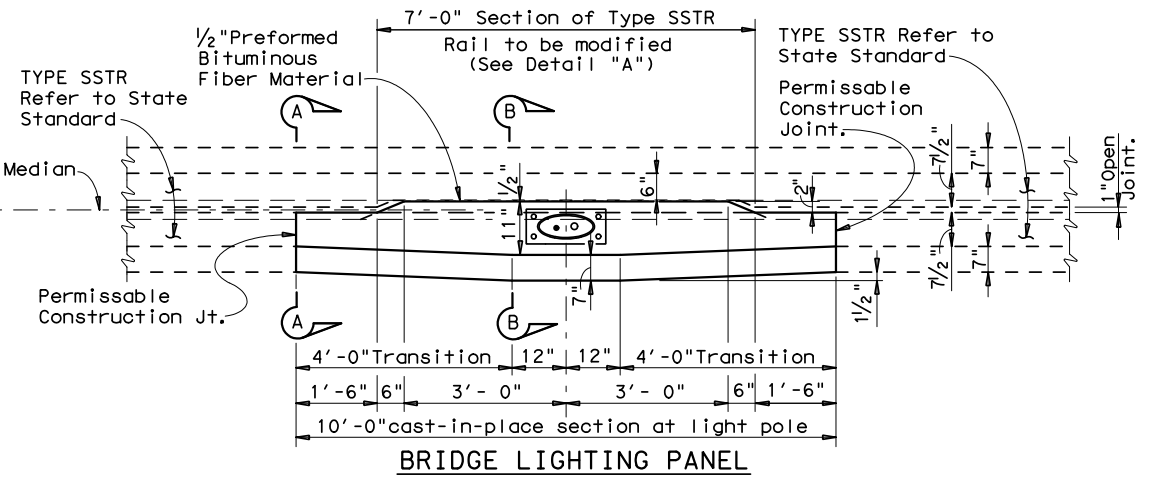


**PLAN**



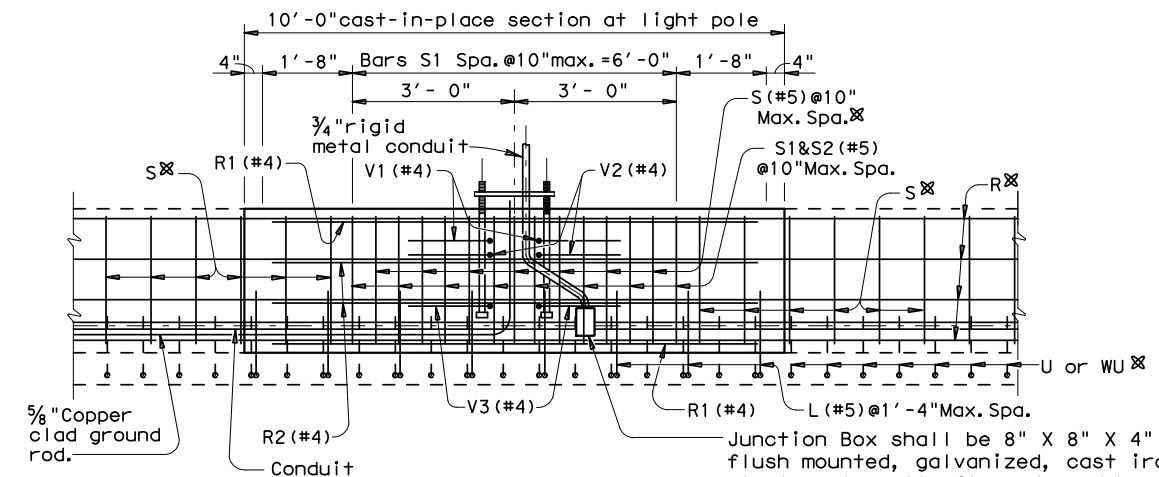
**ELEVATION**

**SHOWING TRANSITIONS BETWEEN ROADWAY AND BRIDGE RAIL**



**BRIDGE LIGHTING PANEL**

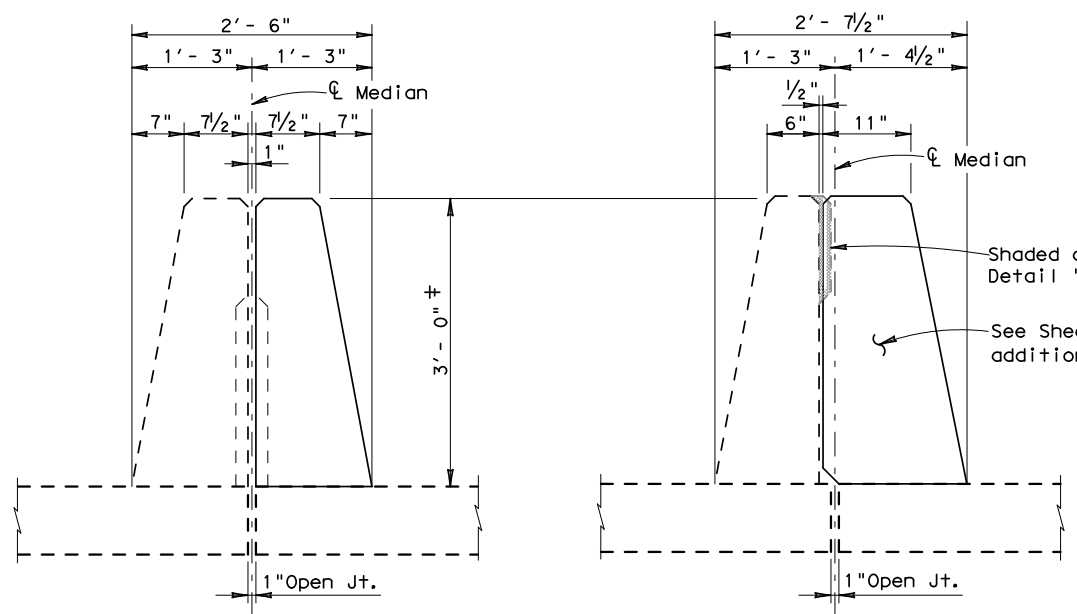
**PLAN**



**ELEVATION OF RAIL**

Junction Box shall be 8" X 8" X 4" heavy duty, flush mounted, galvanized, cast iron or cast steel, externally flanged, and be Crouse-Hinds Type WGB, 0-Z Gedney Type YR, or equal, if approved by the Engineer. Bond junction box to grounding conductor.

⊗ For conventional reinforcing steel size, spacing, and notes, refer to State Standard, SINGLE SLOPE TRAFFIC RAILING TYPE SSTR. Conventional reinforcing steel continues thru 10 foot light pole section.

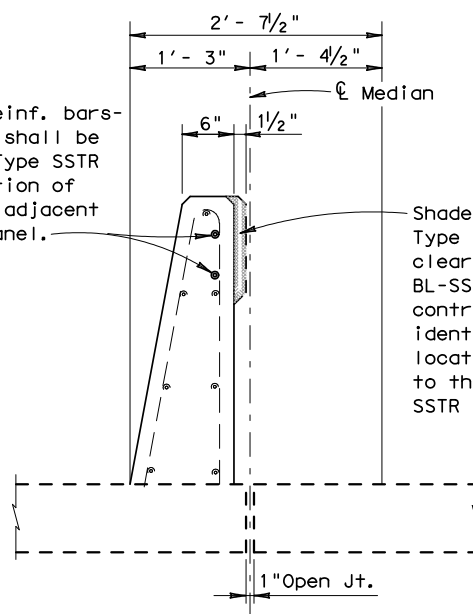


**SECTIONS A-A**

**SECTIONS B-B**

**SECTIONS SHOWING RAIL AT CENTER MEDIAN OF BRIDGE**

Two additional reinf. bars- #4 ~ 10'-0" long shall be centered in the Type SSTR rail at the location of omitted concrete adjacent to the BL-SSTR panel.



**DETAIL "A"**

**(TYPE SSTR RAIL MODIFICATION)**



**BRIDGE LIGHTING  
DETAIL FOR SSTR**

SAN ANTONIO DISTRICT STANDARD

**BL-SSTR**

T:/engdata/Bridge/DistStds/Working/blsstr/blsstrSA.dgn		PREPARED BY AND FOR USE OF TxDOT.	
ORIGINAL DRAWING DATE: NOV. 2000	STATE DISTRICT REGION	FEDERAL AID PROJECT	SHEET
DL: GPG	REVISIONS	SAT 6	
CK: JHK	11-14-03 Changed title to Bridge Light Detail For SSTR to be used with SSTR State Std.	COUNTY	CONTROL SECTION JOB HIGHWAY
DW: MRM			
CK: GPG	08-11-05 Add Bars "L" to Slab		