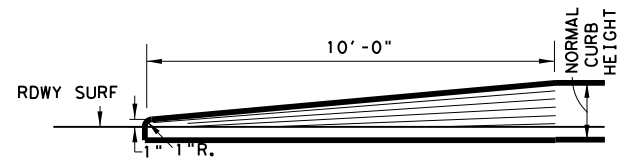
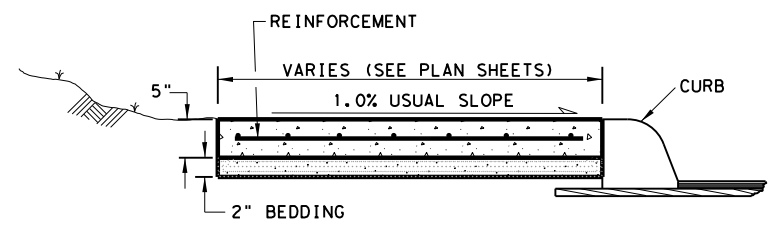
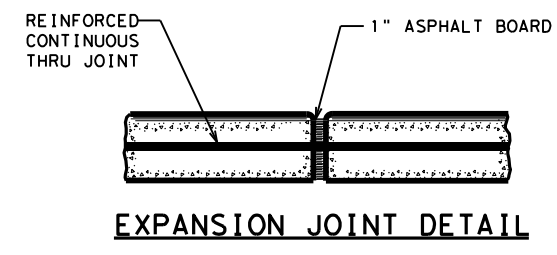


DATE: 2/23/2023 12:51:59 PM
 FILE: \\txdot\project\seon\line.com\TXDOT4\Documents\14 - AUS_Standards\District Design_Standards\MCPsWMD-23 (AUS).dgn



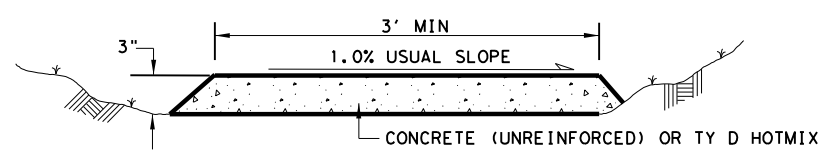
TRANSITION FOR CONCRETE CURB ENDS



SIDEWALK & SHARED USE PATH (S.U.P.) TYP. SECT.

SIDEWALK OR S.U.P. EXPANSION JOINTS ARE TO BE AT A MAX. SPACING OF 40' AND COINCIDE WITH THE CURB EXPANSION JOINTS (WHEN ADJACENT TO CURB).

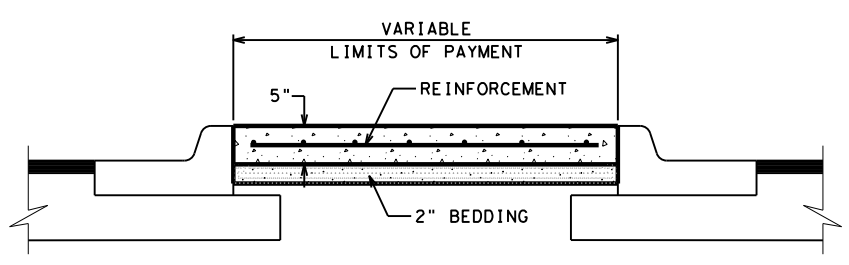
NOTE: TOOLED OR SAWED CONTRACTION JOINTS ARE NOT ALLOWED.



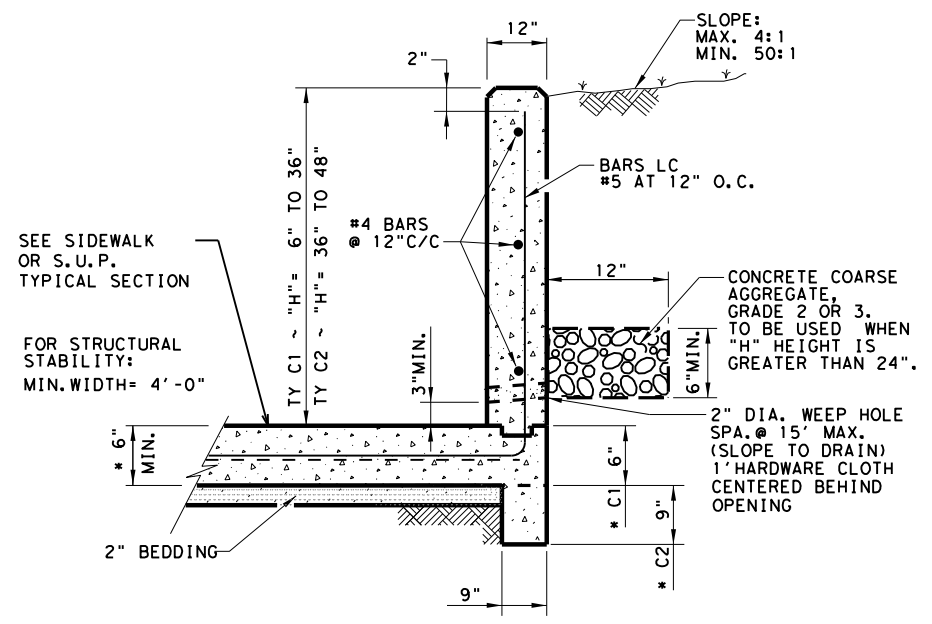
TEMPORARY SIDEWALK & SHARED USE PATH (S.U.P.)

CONC SIDEWALK (SPECIAL) (TYPE B)

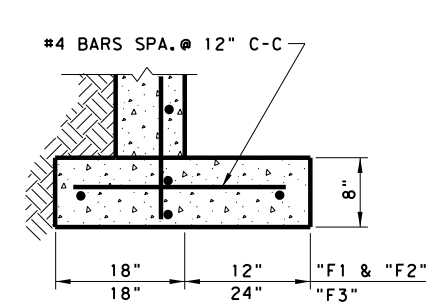
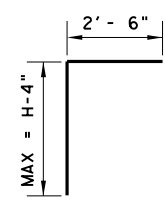
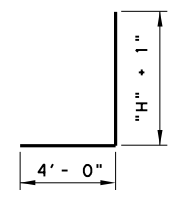
1. EXPANSION JOINTS, BEDDING, AND TOOL JOINTS ARE NOT REQUIRED.
2. PROVIDE 5' X 5' PASSING AREA AT INTERVALS NOT TO EXCEED 200'.
3. 4' TALL ORANGE CONSTRUCTION FENCE REQUIRED IF DROP OFF GREATER THAN 6" ADJACENT TO SIDEWALK.
4. ALL MATERIAL AND TESTING REQUIREMENTS ARE WAIVED.
5. INSTALLATION, MAINTENANCE, FENCE, AND REMOVAL ARE SUBSIDIARY TO SIDEWALK ITEM.
6. EXCAVATION AND EMBANKMENT TO PROVIDE ADA COMPLIANCE WILL BE PAID USING PERTINENT BID ITEMS.
7. LOCATION AS DIRECTED BY ENGINEER.



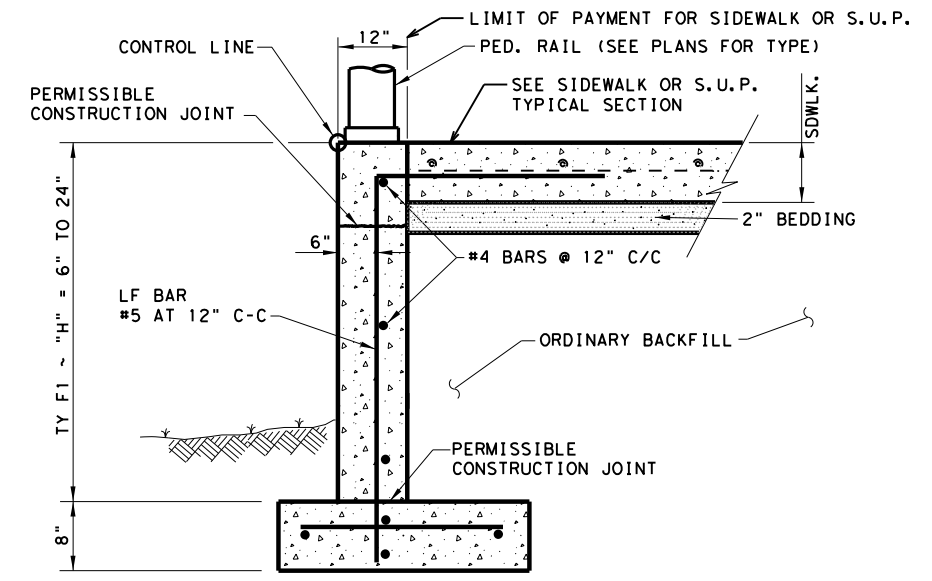
RIPRAP MEDIAN DETAIL



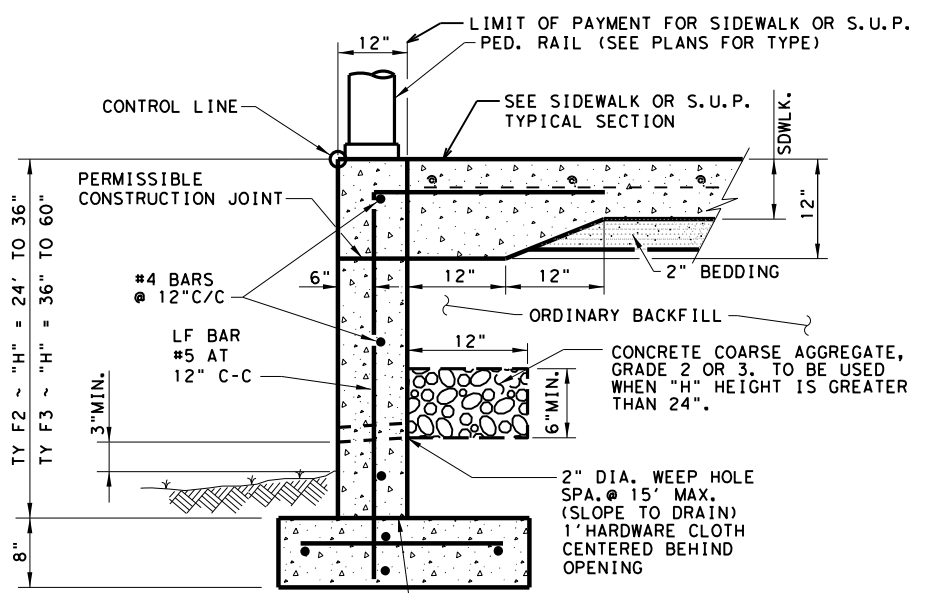
CONC CURB (TY C1) & (TY C2)



FOOTING DETAIL



CONC CURB (TY F1)†



CONC CURB (TY F2) & (TY F3)†

SIDEWALK, SHARED USE PATH, AND MEDIAN NOTES

Reinforcement will be in accordance with Item 432.3.1. Fiber reinforcement is not allowed. Class A and B Concrete are allowed to use Coarse Aggregate Grades 1-8.

Bedding may be sand, base, or RAP bedding. Furnish base meeting the requirement for any type or grade in accordance with Item 247. Base compressive strengths are waived. RAP must be 100% passing a 1 in. sieve. Bedding must be placed using ordinary compaction.

If roots are encountered verify with the Engineer prior to accommodating or removing 2 in. diameter or larger roots. Root removal must be in accordance with Item 752.4.2. Roots may remain in the bedding or base. For improvements within 6 in. of a root, the concrete thickness may be reduced by 1 in. and the bedding increased by 1 in. to minimize impacts to the roots. Adjust bedding and surface profile to provide a 1 in. bedding cushion around the roots. The surface profile may be adjusted to the extent allowed by ADA. This work is subsidiary.

CONCRETE CURB NOTES:

All Concrete, including adjacent sidewalk or S.U.P., shall be Class "C".
 All Reinforcing Steel shall be Grade 60.
 Minimum 4' sidewalk width for CONC CURB (TYPES C1 & C2).

†Until the sidewalk is complete, lateral support for the "F" curbs will be required.

ALL WORK SHOWN BEYOND TYPICAL SIDEWALK, S.U.P., AND PED RAIL IS SUBSIDIARY.

DESIGN SOIL PARAMETERS:

Soil Unit Wt. = 120 pcf
 Phi = 30 Degrees
 Cohesion = 50 psf
 Min. PI = 15
 Max. PI = 30

SURCHARGE:

TYPE F CURB q = 2' Adjacent to sidewalk
 Max. slope behind TYPE C Curb = 4:1
 Min. Factor of Safety against sliding is 1.5.
 Designed in accordance with current AASHTO Standards and Interim Specifications.

NOT TO SCALE

Austin District Standard

MISCELLANEOUS CURB, PATH, SIDEWALK, AND MEDIAN DETAILS

MCPsWMD-23 (AUS)

©TXDOT 2023	CONT	SECT	JOB	HIGHWAY
04/19/19 APPROVED 02/23/21 ADDED TEMP 5/W	REVISIONS			
DIST	COUNTY			SHEET NO.
AUS				