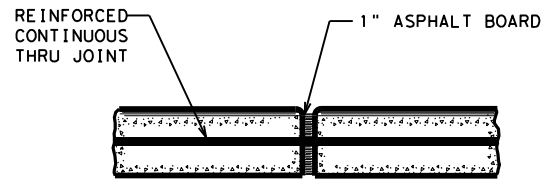
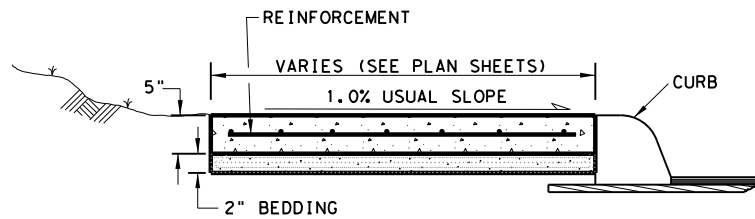


TAPER FOR CURB AND MEDIAN ENDS

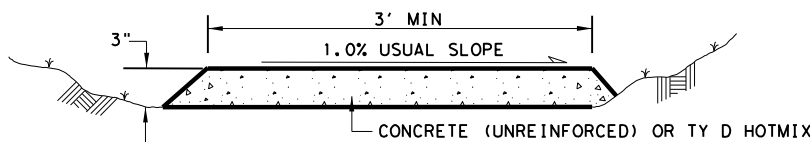


CURB, SIDEWALK, & SUP EXPANSION JOINT DETAIL



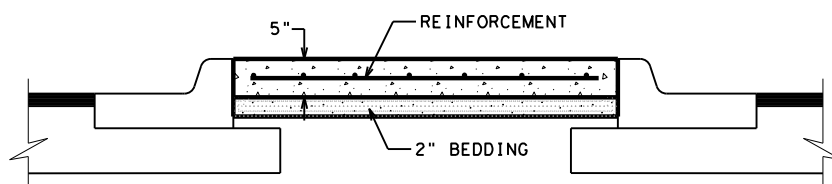
SIDEWALK & SHARED USE PATH (S.U.P.) TYP. SECT.

1. SIDEWALK OR S.U.P. EXPANSION JOINTS ARE TO BE AT A MAX. SPACING OF 40' AND COINCIDE WITH THE CURB EXPANSION JOINTS (WHEN ADJACENT TO CURB).
2. TOOLED OR SAWED CONTRACTION JOINTS ARE NOT ALLOWED



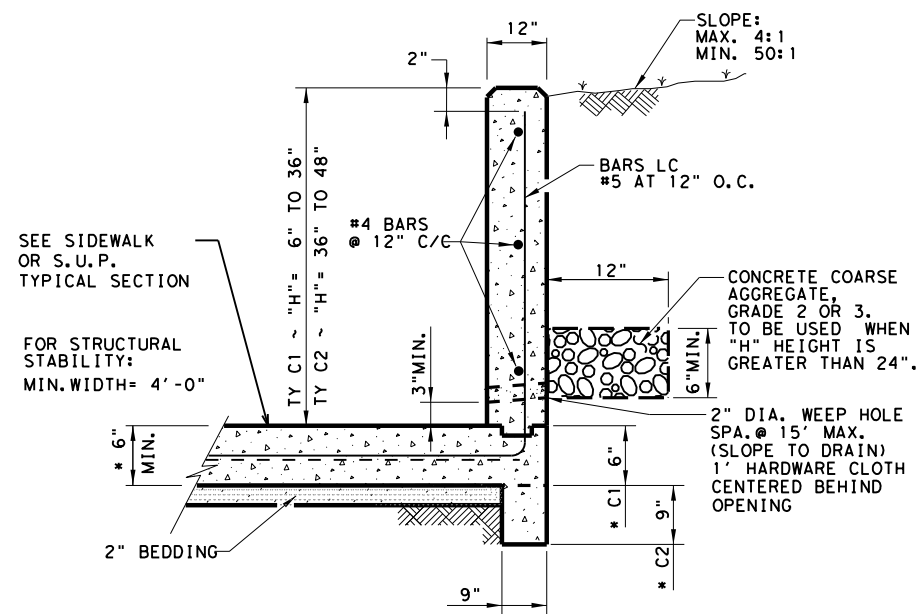
TEMPORARY SIDEWALK & SHARED USE PATH (S.U.P.)

1. EXPANSION JOINTS, BEDDING, AND TOOL JOINTS ARE NOT REQUIRED.
2. PROVIDE 5' X 5' PASSING AREA AT INTERVALS NOT TO EXCEED 200'.
3. 4' TALL ORANGE CONSTRUCTION FENCE REQUIRED IF DROP OFF GREATER THAN 6" ADJACENT TO SIDEWALK.
4. ALL MATERIAL AND TESTING REQUIREMENTS ARE WAIVED.
5. INSTALLATION, MAINTENANCE, FENCE, AND REMOVAL ARE SUBSIDIARY TO SIDEWALK ITEM.
6. EXCAVATION AND EMBANKMENT TO PROVIDE ADA COMPLIANCE WILL BE PAID USING PERTINENT BID ITEMS.
7. LOCATION AS DIRECTED BY ENGINEER.

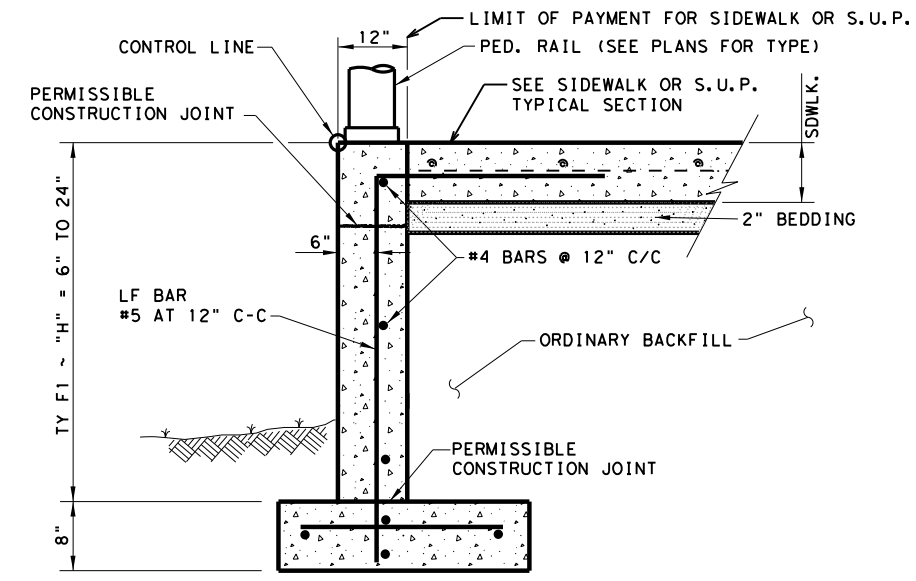
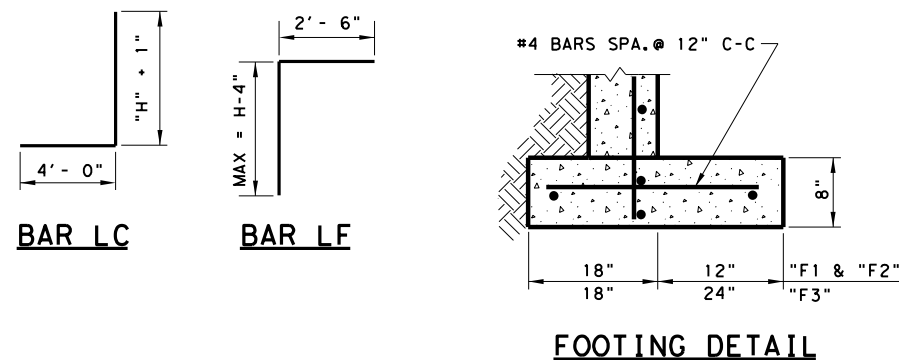


RIPRAP MEDIAN DETAIL

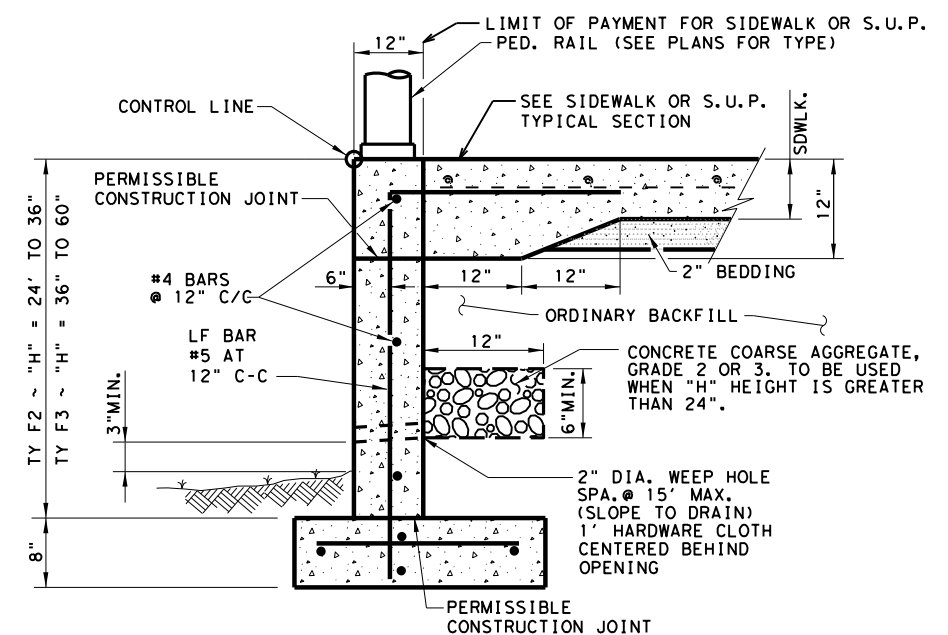
1. EXPANSION JOINTS ARE TO BE AT A MAX. SPACING OF 40' AND COINCIDE WITH THE CURB EXPANSION JOINTS (WHEN ADJACENT TO CURB)
2. EXPANSION MATERIAL BETWEEN MEDIAN AND CURB IS NOT REQUIRED.



CONC CURB (TY C1) & (TY C2)



CONC CURB (TY F1)†



CONC CURB (TY F2) & (TY F3)†

CONCRETE CURB NOTES:

- All Concrete, including adjacent sidewalk or S.U.P., shall be Class "C".
- All Reinforcing Steel shall be Grade 60.
- Minimum 4' sidewalk width for CONC CURB (TYPES C1 & C2).

†Until the sidewalk is complete, lateral support for the "F" curbs will be required.

ALL WORK SHOWN BEYOND TYPICAL SIDEWALK, S.U.P., AND PED RAIL IS SUBSIDIARY.

DESIGN SOIL PARAMETERS:

- Soil Unit Wt. = 120 pcf
- Phi = 30 Degrees
- Cohesion = 50 psf
- Min. PI = 15
- Max. PI = 30

SURCHARGE:

- TYPE F CURB q = 2' Adjacent to sidewalk
- Max. slope behind TYPE C Curb = 4:1
- Min. Factor of Safety against sliding is 1.5.
- Designed in accordance with current AASHTO Standards and Interim Specifications.

SIDEWALK, SHARED USE PATH, AND MEDIAN NOTES

Reinforcement will be in accordance with Item 432.3.1. Fiber reinforcement is not allowed. Class A and B Concrete are allowed to use Coarse Aggregate Grades 1-8.

Bedding may be sand, base, or RAP bedding. Furnish base meeting the requirement for any type or grade in accordance with Item 247. Base compressive strengths are waived. RAP must be 100% passing a 1 in. sieve. Bedding must be placed using ordinary compaction.

If roots are encountered verify with the Engineer prior to accommodating or removing 2 in. diameter or larger roots. Root removal must be in accordance with Item 752.4.2. Roots may remain in the bedding or base. For improvements within 6 in. of a root, the concrete thickness may be reduced by 1 in. and the bedding increased by 1 in. to minimize impacts to the roots. Adjust bedding and surface profile to provide a 1 in. bedding cushion around the roots. The surface profile may be adjusted to the extent allowed by ADA. This work is subsidiary.

NOT TO SCALE

Texas Department of Transportation Austin District Standard

MISCELLANEOUS CURB, PATH, SIDEWALK, AND MEDIAN DETAILS

MCPSWMD-25 (AUS)

DATE: \$DATE\$ FILE: \$FILE\$	\$TIMES\$	CONT	SECT	JOB	HIGHWAY
		DIST	COUNTY		SHEET NO.
		AUS			

©TxDOT 2025 REVISIONS
04/191 APPROVED
02/231 ADDED TEMP S/W
10/241 REVISED TO 2024 SPEC