

VOIDS DEFINITION

- VOID GREATER THAN SIX INCHES ACROSS IN ANY DIRECTION AND/OR
- VOID IS GREATER THAN ONE SQUARE FOOT ALONG ANY PLANE AND/OR
- VOID BLOWS AIR AND/OR
- VOID CONTINUALLY RECEIVES WATER DURING A RAIN EVENT AND/OR
- VOID HAS WATER FLOWING THROUGH OR OUT OF IT AND/OR

GENERAL NOTES

1. USING EXPLOSIVES IS NOT ALLOWED.
2. THE PROJECT AREA IS A KNOWN KARST AREA. FRACTURED MATERIAL, BOULDERS, UNDERGROUND VOIDS, GROUNDWATER, UNSTABLE MATERIAL, AND DRASTICALLY VARYING STRATA CAN BE EXPECTED. THE CONTRACTOR SHALL WORK WITH TXDOT AND TXDOT'S PARTNERS TO ALLOW ACCESS AND ON-SITE MONITORING OF EXCAVATION.
3. THE VOID MITIGATION DETAILS ARE EXAMPLES. IMPLEMENTATION OF THE APPROVED MITIGATION PLAN SHOULD USE THE REFERENCED BID ITEMS.
4. CONCRETE USED FOR VOID MITIGATION SHALL BE 3,000 PSI IN ACCORDANCE WITH ITEM 420 CLASS A CONC (MISC). QUANTITIES UNDER 4 CY MAY BE HAND MIXED ON SITE USING 5,000 PSI RATED BAG MIX CONCRETE.
5. 3 IN. x 5 IN. ROCK SHALL BE IN ACCORDANCE WITH ITEM 506. LARGE ROCK > 1 FT. SHALL BE IN ACCORDANCE WITH 12 IN. ROCK PER ITEM 432.
6. FILTER FABRIC AND EROSION LOGS WILL BE IN ACCORDANCE WITH ITEM 506.
7. IMPERMEABLE LINER WILL BE IN ACCORDANCE WITH ITEM 5056. THE EDGE OF THE LINER SHALL BE ANCHORED IN A 6 IN. WIDE BY 18 IN. DEEP TRENCH.
8. STEEL CASING, USED FOR DRILL SHAFT CONSTRUCTION, SHALL BE IN ACCORDANCE WITH ITEM 416.
9. AGGREGATE OR OTHER BACKFILL WILL BE PAID FOR BY OVERRUN OF EXISTING EMBANKMENT ITEM. FILTER FABRIC OVER THE AGGREGATE IS SUBSIDIARY. SANDBAGS SHALL BE PAID USING SANDBAGS FOR EROSION CONTROL. THE SANDBAGS SHALL BE POLYPROPYLENE AND FILLED WITH PEA GRAVEL. CONNECTOR PIPE SHALL BE PAID USING PIPE (PVC) (SCH 80) (6 IN).
10. IF A SINGLE VOID IMPACT CAUSES DELAYS BY MORE THAN 20 WORKING DAYS, DELAY WILL BE CONSIDERED FOR THE IMPACT BEYOND THE INITIAL 20 DAYS. IF THE ACCUMULATION OF VOID IMPACTS CAUSE DELAYS BY MORE 40 WORKING DAYS, DELAY WILL BE CONSIDERED FOR THE IMPACT BEYOND THE 40 DAYS. OVERHEAD, BARRICADES AND DELAYS WILL BE EVALUATED AND PAID IN ACCORDANCE WITH THE CONTRACT. IMPACTS WILL NOT BE CONSIDERED IMPACT AFTER A RESPONSE PROCEDURE IS PROVIDED. ALL DELAYS CAUSED BY A VOID AND THE DURATION FOR IMPLEMENTATION OF A RESPONSE ARE NON-COMPENSABLE FOR LABOR, EQUIPMENT, STANDBY, MOBILIZATIONS, AND COST ESCALATIONS.

VOID MITIGATION AND PROTECTION MEASURES

REFER TO VOID MITIGATION DETAILS FOR ADDITIONAL INFORMATION. VOID MITIGATION DETAILS ARE TO BE APPROVED BY GEOSCIENTIST AND THE TCEQ (IF APPLICABLE) PRIOR TO IMPLEMENTATION.

1. IN THE EVENT THAT UNKNOWN KARST VOIDS ARE ENCOUNTERED, WORK AT THAT LOCATION WILL BE HALTED IMMEDIATELY AND THE FEATURE WILL BE INSPECTED PROMPTLY BY TXDOT.
2. WHEN REQUIRED, TXDOT WILL INSPECT ALL VOIDS TO DETERMINE THE POTENTIAL OF THE FEATURES TO PROVIDE SUITABLE HABITAT FOR ENDANGERED KARST INVERTEBRATES. WORK AT THAT LOCATION WILL NOT RESUME UNTIL AUTHORIZATION TO DISTURB THE FEATURE HAS BEEN OBTAINED. REFER TO THE EPIC SHEET FOR ADDITIONAL INFORMATION FOR THREATENED OR ENDANGERED SPECIES.

TXDOT WILL INSPECT ALL VOIDS TO DETERMINE THE APPROPRIATE VOID MITIGATION PLAN.
3. ADDITIONAL EXCAVATION OF THE VOID MAY BE REQUIRED BY TXDOT OR THE GEOSCIENTIST TO FULLY EVALUATE THE VOID AND/OR MITIGATION PLAN PREPERATION. TXDOT APPROVAL IS REQUIRED PRIOR THE EXCAVATION. THIS WORK IS SUBSIDIARY.

VOID DISCOVERY PROTOCOL

IF A VOID IS DISCOVERED, THE FOLLOWING PROTOCOL WILL BE FOLLOWED:


1. ALL VOIDS REQUIRE AN EMAIL NOTIFICATION TO TXDOT DESIGNATED REPRESENTATIVE WITHIN 2 HOURS OF DISCOVERY. THE EMAIL WILL REQUIRE LOCATION INFORMATION (STATION, LATITUDE & LONGITUDE), DATES OF DISCOVERY, VIDEO/PICTURE DOCUMENTATION, SIZE, ETC. CONTRACTOR SHALL SUPPLY A CAMERA AND DIGITAL PICTURE/VIDEO DOCUMENTATION OF ALL VOIDS AND PROVIDE A MEASUREMENT OF THE SIZE OF THE VOID. FOR VOIDS THAT CANNOT BE SAFELY EXPLORED, ANOTHER DEVICE SHALL BE PROVIDED TO DOCUMENT THE VOID. CONTACT THE DISTRICT CONSTRUCTION OFFICE FOR AN EXAMPLE EMAIL THAT SHALL BE FOLLOWED. THIS WORK IS SUBSIDIARY.
2. ALL ACTIVITY WITHIN A 50-FOOT RADIUS OF THE VOID SHALL STOP. BLOCK TRAFFIC FROM DRIVING NEAR THE VOID AND PREVENT CONSTRUCTION EQUIPMENT FROM OPERATING IN THE VICINITY OF THE VOID USING BARRELS, ORANGE CONSTRUCTION FENCE OR OTHER APPROVED HIGHLY VISIBLE BARRIER.
3. A DRY VOID THAT IS LESS THAN 1 CF IN VOLUME OR LESS THAN 6 IN. IN ALL DIRECTIONS WILL NOT REQUIRE ACTION BEYOND NOTIFICATION. TXDOT SHALL BE NOTIFIED IMMEDIATELY VIA EMAIL AND PHONE WHEN A VOID IS FOUND THAT REQUIRES ACTION. TXDOT WILL RESPOND WITHIN 6 BUSINESS DAYS FROM TIME OF EMAIL NOTIFICATION TO PROVIDE GUIDANCE TO THE CONTRACTOR.
4. COVER THE VOID TO PREVENT CONTAMINATION AND CHANGES IN AMBIENT CONDITIONS (TARPS AND PLYWOOD, OR SIMILAR MATERIALS ARE APPROPRIATE AS AVAILABLE). WHERE COVERING THE VOID IS NOT FEASIBLE, CONTRACTOR SHALL OBTAIN APPROVAL FROM TXDOT OF ALTERNATE TEMPORARY PROTECTION MEASURES. BIODEGRADABLE EROSION CONTROL LOG (BECL) SHOULD WRAP THE SURFACE PERIMETER OF THE VOID. TEMPORARY PROTECTIONS SHOULD REMAIN IN PLACE UNTIL FINAL MITIGATION AND PROTECTION MEASURES ARE APPROVED AND IN PLACE. AN EARTHEN BERM WILL BE MAINTAINED ON THE UP-GRADIENT SIDE OF VOID TO PREVENT ANY CONSTRUCTION RUNOFF FROM ENTERING ANY PART OF THE FEATURE WHICH MAY REMAIN. THIS WORK IS SUBSIDIARY.
5. WHEN REQUIRED TXDOT SHALL IMMEDIATELY NOTIFY THE TEXAS COMMISSION ON ENVIRONMENTAL QUALITY (TCEQ) AUSTIN REGIONAL OFFICE.
6. TXDOT WILL PROVIDE FOR THE EVALUATION OF THE VOID A QUALIFIED GEOSCIENTIST LICENSED BY THE TEXAS BOARD OF PROFESSIONAL GEOSCIENTISTS OR BY A PROFESSIONAL ENGINEER WHO QUALIFIES TO PRACTICE GEOSCIENCE ACCORDING TO THE TEXAS BOARD OF PROFESSIONAL GEOSCIENTISTS.
7. WHEN REQUIRED TXDOT WILL SUBMIT AND OBTAIN APPROVAL OF AN ENCOUNTERED FEATURE MITIGATION PLAN TO THE TCEQ AUSTIN REGION OFFICE.
8. WORK SHOULD CEASE IN THE AREA UNTIL ASSESSMENT OF THE VOID CAN BE COMPLETED, TCEQ APPROVES THE ENCOUNTERED FEATURE MITIGATION PLAN AND MITIGATION IS COMPLETED. WHEN THE VOID IS OUTSIDE TCEQ JURISDICTION, TXDOT WILL APPROVE THE ENCOUNTERED FEATURE MITIGATION PLAN.

VOIDS RELATED TO DRILLED SHAFTS, SOIL NAILS, ROCK NAILS AND OTHER SIMILAR FUNCTIONS

1. SUBMIT INSTALLATION PLAN FOR REVIEW NO LATER THAN 2 MONTHS BEFORE CONSTRUCTION.
2. THE USE OF DRILLING FLUIDS, UNDERWATER PLACEMENT, OR SLURRY METHOD WILL NOT BE ALLOWED IF A VOID IS EXPOSED DURING DRILLING OF SHAFTS OR NAILS. THE CONTRACTOR SHALL USE APPROPRIATE INDUSTRY APPROVED METHODS TO PROVIDE A PRODUCT IN COMPLIANCE WITH THE SPECIFICATIONS. ADDITIONAL TIME OR COMPENSATION WILL NOT BE ALLOWED FOR USE OF ALTERNATE METHODS OR CASING INSTALLATION.
3. DURING NON-WORK HOURS OPEN HOLES SHALL BE PROTECTED FOR SAFETY AND COVERED. SHAFTS SHALL BE SURROUNDED BY EROSION CONTROL LOGS AT AN OFFSET OF 10' FROM THE EDGE OF THE OPENING. THIS WORK IS SUBSIDIARY
4. VIDEO DOCUMENTATION SHALL BE CONDUCTED OF A DRILL SHAFT ONCE EXCAVATION IS COMPLETE AND PRIOR TO PLACING REINFORCEMENT. SUFFICIENT LIGHTING SHALL ACCOMPANY THE VIDEO CAMERA TO ENSURE THE SHAFT AND VOIDS ARE VISIBLE. THIS WORK IS SUBSIDIARY.
5. CONCRETE USED TO FILL THE VOIDS WILL BE PAID USING CLASS A CONC (MISC) ITEM BUT WILL USE THE CLASS OF CONCRETE AS REQUIRED BY THE SPECIFICATION. QUANTITY OF CONCRETE WILL BE BASED ON VISUAL INSPECTION PROVIDED BY THE CONTRACTOR. IF VISUAL INSPECTION IS UNABLE TO DETERMINE THE SIZE OF THE VOID THE CONCRETE FOR PAYMENT WILL BE MEASURED AS THE ADDITIONAL CONCRETE BEYOND THE AMOUNT REQUIRED TO PLACE A CLEAN SHAFT PLUS 10 PERCENT WASTE.
6. THE USE OF PERMANENT CASING SHALL BE IN ACCORDANCE WITH ITEM 416. MATERIAL COST FOR CASING THAT REMAINS WILL BE PAID BY INVOICE FROM SUPPLIER WITH MARK UP IN ACCORDANCE WITH MATERIAL FOR ITEM 9.7. ADDITIONAL LABOR, EQUIPMENT, TIME, ETC. FOR INSTALLATION OF THE CASING WILL NOT BE COMPENSABLE.
7. ADDITIONAL NAIL LENGTH WILL BE PAID BY OVERRUN OF EXISTING BID ITEM. ALTERNATE NAIL TYPE COST WILL BE PAID BY INVOICE FROM SUPPLIER WITH MARK UP IN ACCORDANCE WITH MATERIAL FOR ITEM 9.7. LABOR, EQUIPMENT, ADDITIONAL TIME, ETC. WILL NOT BE COMPENSABLE.
8. CORE HOLES ARE REQUIRED FOR ALL DRILLED SHAFTS.

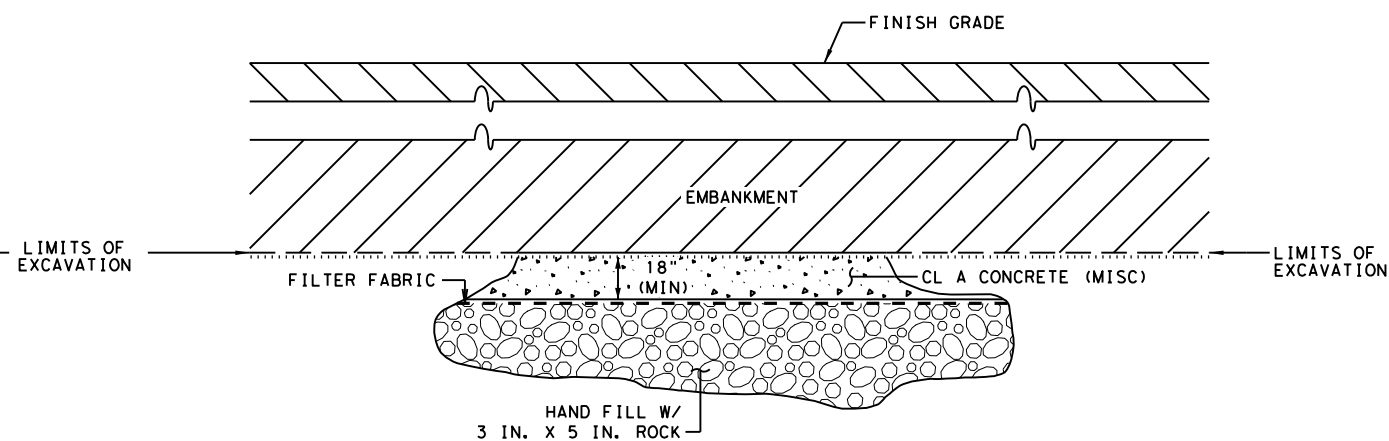
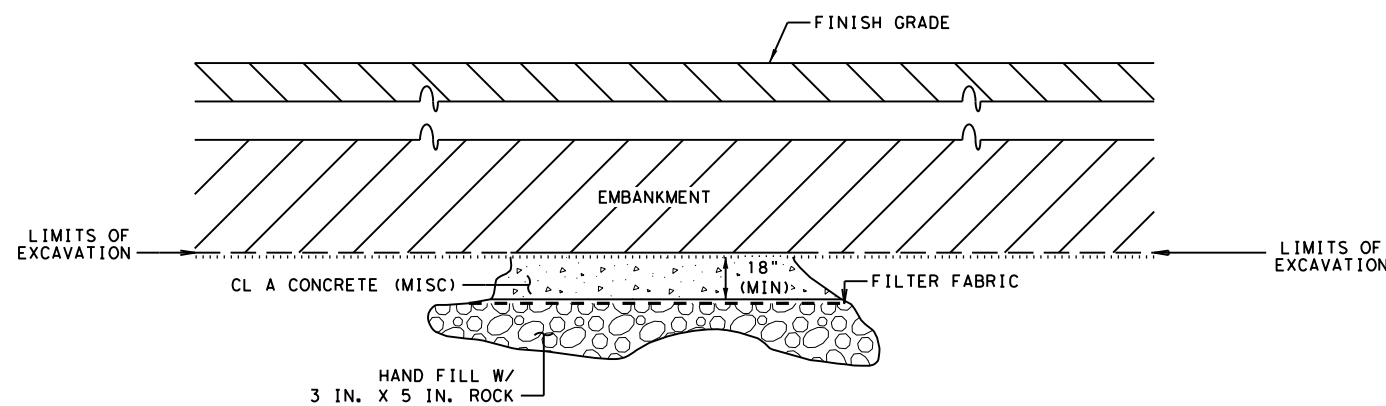
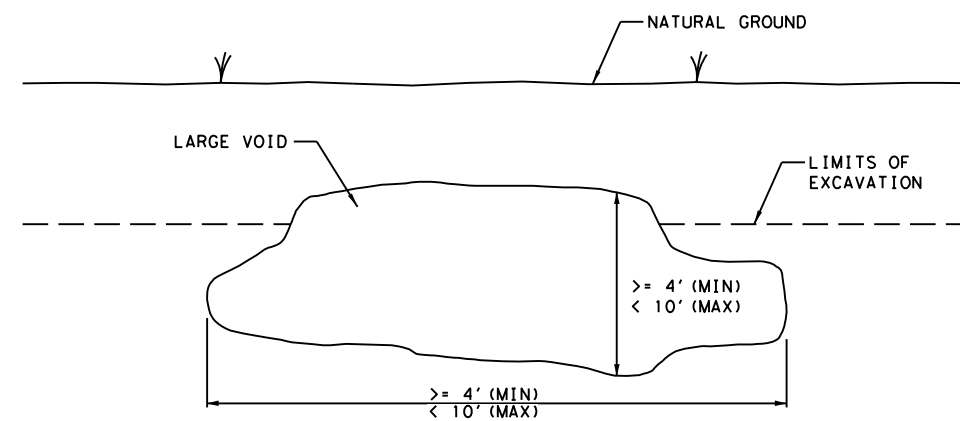
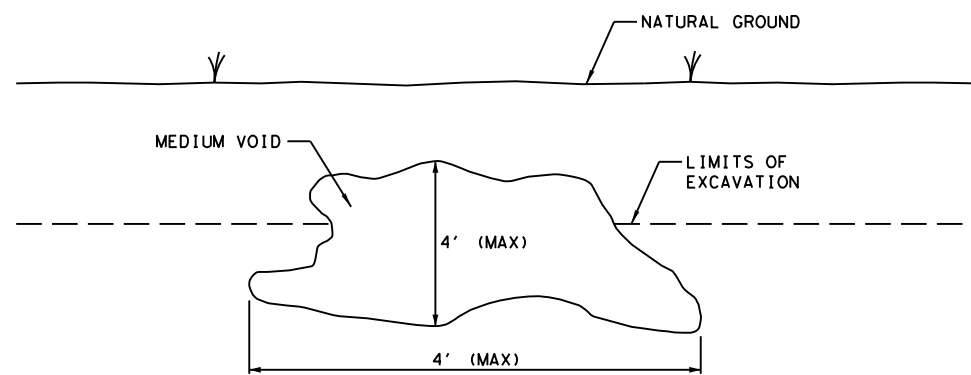
PLEASE REFER TO VOID MITIGATION INFO FOUND IN THE APPENDIX OF THE AUSTIN DESIGNERS GUIDE. PLEASE DELETE THIS NOTE.

PLEASE CONTACT ZACH LANFEEAR AND ANDY BLAIR AT TXDOT AUS ENV OFFICE PRIOR TO USING THESE DETAILS. PLEASE DELETE THIS NOTE PRIOR TO PLACING THESE DETAILS IN THE PLANS.

		Austin District Standard	
<h2 style="margin: 0;">VOID MITIGATION NOTES</h2> <h3 style="margin: 0;">VMD-18 (AUS)</h3>			
SHEET 1 OF 7			
©TXDOT 2020	CONT	SECT	JOB HIGHWAY
DIST	COUNTY		SHEET NO.

DATE: 9/21/2020 1:01:07 PM
 FILE: \\txdot\project\seonl\ine.com\TXDOT4\Documents\14 - AUS_Standards\District Design_Standards\Approved\VMD-18 (AUS).dgn

DATE: 9/21/2020 1:01:10 PM
 FILE: \\txdot\projectwiseon1\ine.com\TXDOT4\Documents\14 - AUS_Standards\District Design_Standards\Approved\VMD-18 (AUS).dgn



ROADWAY/S.U.P. GRADING OPERATIONS
 MEDIUM (DRY VOID)
 (<4' IN ANY DIRECTION)
 (1 CF < 64 CF)

ROADWAY/S.U.P. GRADING OPERATIONS
 LARGE (DRY VOID)
 (>=4' <10' ANY DIRECTION)
 (64 CF < 1000 CF)



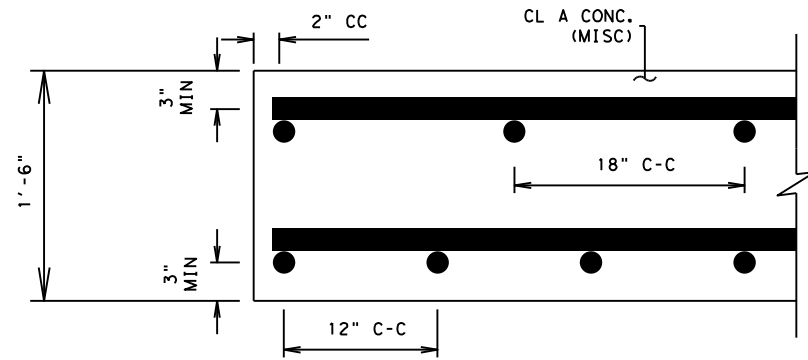
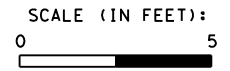
**VOID MITIGATION
DETAILS**

VMD-18 (AUS)

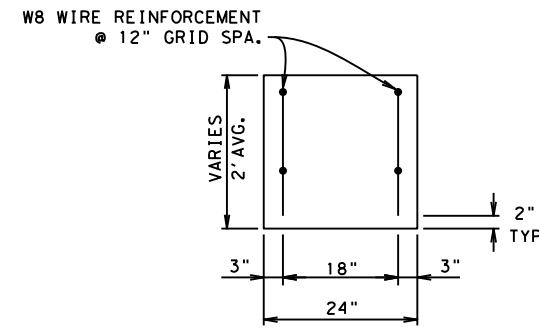
SHEET 2 OF 7

©TXDOT 2020	CONT	SECT	JOB	HIGHWAY
	DIST	COUNTY		SHEET NO.

DATE: 9/21/2020 1:01:12 PM
 FILE: \\txdot\projectwiseon1\ine.com\TXDOT4\Documents\14 - AUS_Standards\District Design_Standards\Approved\VMD-18 (AUS).dgn



REINFORCING DETAIL



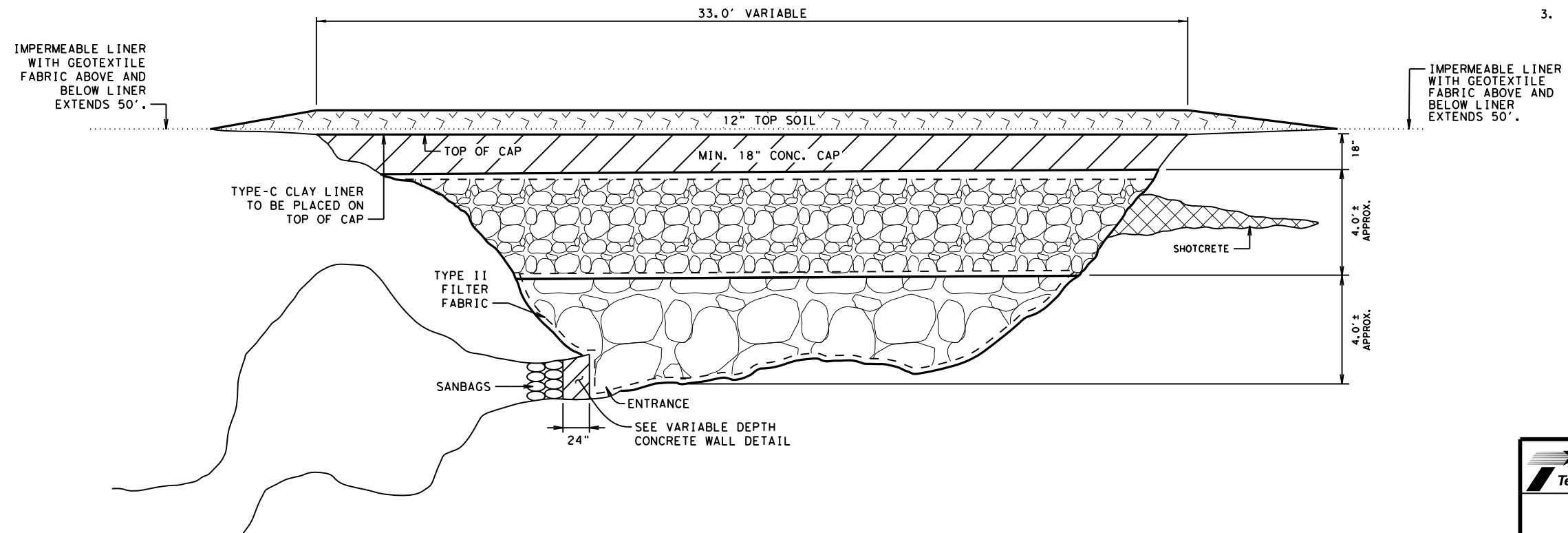
VARIABLE DEPTH CONCRETE WALL

LEGEND

- CLASS A CONC. (MISC)
- 3 IN. x 5 IN. ROCK
- LARGE ROCK (≥ 1 FT)
- SHOTCRETE

NOTE:

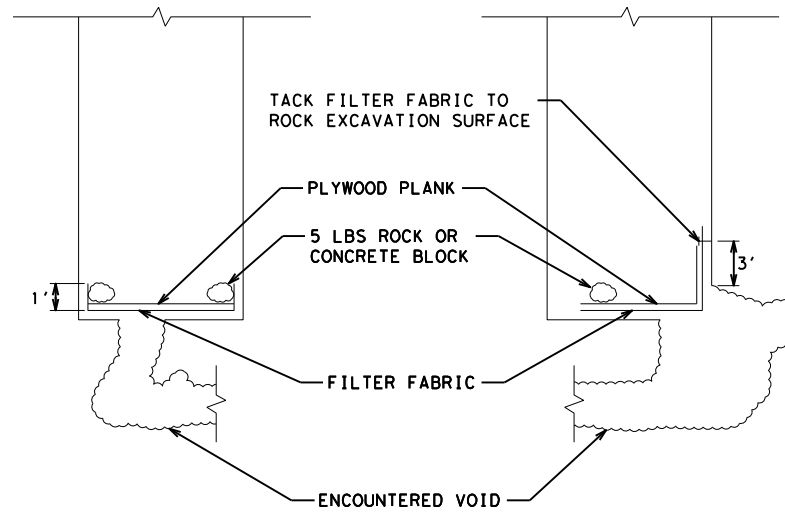
1. CONCRETE WALL AND CONCRETE CAP SHALL BE PAID USING CLASS A CONC. (MISC).
2. SHOTCRETE WILL BE PAID USING CLASS A CONC. (MISC).
3. THE 12 IN. TOPSOIL AND LINER MAY NOT BE APPLICABLE IF THE VOID IS NOT IN A POND.



ELEVATION OF VOID IN A POND

Austin District Standard									
VOID MITIGATION DETAILS									
VMD-18 (AUS)									
SHEET 3 OF 7									
©TxDOT 2020	<table border="1" style="width: 100%; border-collapse: collapse;"> <tr> <td style="width: 15%;">CONT</td> <td style="width: 15%;">SECT</td> <td style="width: 15%;">JOB</td> <td style="width: 15%;">HIGHWAY</td> </tr> <tr> <td colspan="2">DIST</td> <td>COUNTY</td> <td>SHEET NO.</td> </tr> </table>	CONT	SECT	JOB	HIGHWAY	DIST		COUNTY	SHEET NO.
CONT	SECT	JOB	HIGHWAY						
DIST		COUNTY	SHEET NO.						


DATE: 9/21/2020 1:01:14 PM
 FILE: \\txdot\projectwiseon1\ne.com\TXDOT4\Documents\14 - AUS_Standards\District Design_Standards\Approved\VMD-18 (AUS).dgn



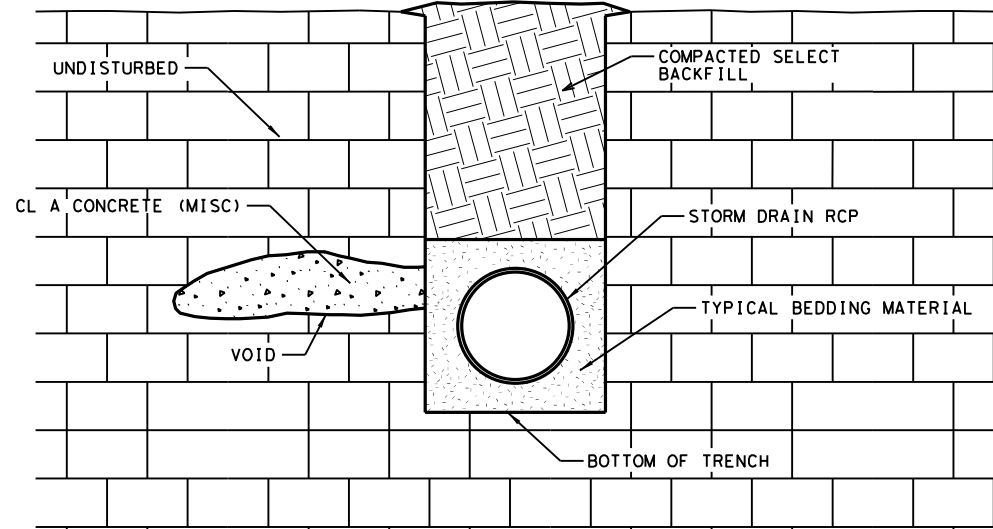
**TEMPORARY PROTECTION
 VOID AT BOTTOM OF TRENCH**

NOTES:

1. PLACE TEMPORARY PROTECTION WITHIN TRENCH TO COVER VOID AS INDICATED. FABRIC SHALL EXTEND A MINIMUM OF 3 IN. BEYOND EDGE OF VOID. PLACE A PLYWOOD PLANK (MINIMUM 0.75 IN. THICK) OVER FABRIC. PLANK AND FABRIC SHALL BE WEIGHTED AS REQUIRED BY 5 LBS ROCK OR CONCRETE BLOCK TO SECURE FILTER FABRIC.
2. TEMPORARY PROTECTION SHALL BE IN PLACE AT ALL TIMES THAT CONSTRUCTION OPERATIONS ARE NOT IN ACTUAL PROGRESS.
3. CONSTRUCTION OPERATIONS WITHIN 50' SHALL NOT PROGRESS DURING OCCURRENCE OF RAIN TO ALLOW FOR PROTECTION OF VOID DURING A RAIN EVENT.
4. LOCALIZED EROSION MEASURES (SILT FENCE, EROSION CONTROL LOG OR TRIANGULAR FILTER DIKES) SHALL BE INSTALLED ALONG THE TRENCH TO ENSURE THAT LOOSE SPOILS OR RUNOFF DO NOT ENTER THE TRENCH OR AFFECT PERFORMANCE OF TEMPORARY PROTECTION. USE EARTHEN BERN TO DIVERT WATER AWAY FROM THE TRENCH.
5. SPECIAL CARE SHALL BE TAKEN TO ENSURE THAT EROSION CONTROL MEASURES REQUIRED ALONG THE TRENCH ARE MAINTAINED, CLEANED AND FULLY FUNCTIONAL.
6. FILTER FABRIC AND ROCK OR CONCRETE BLOCKS AND PLYWOOD PLANK SHALL BE REMOVED FROM THE TRENCH WHEN PERMANENT VOID MITIGATION MEASURES ARE INSTALLED.

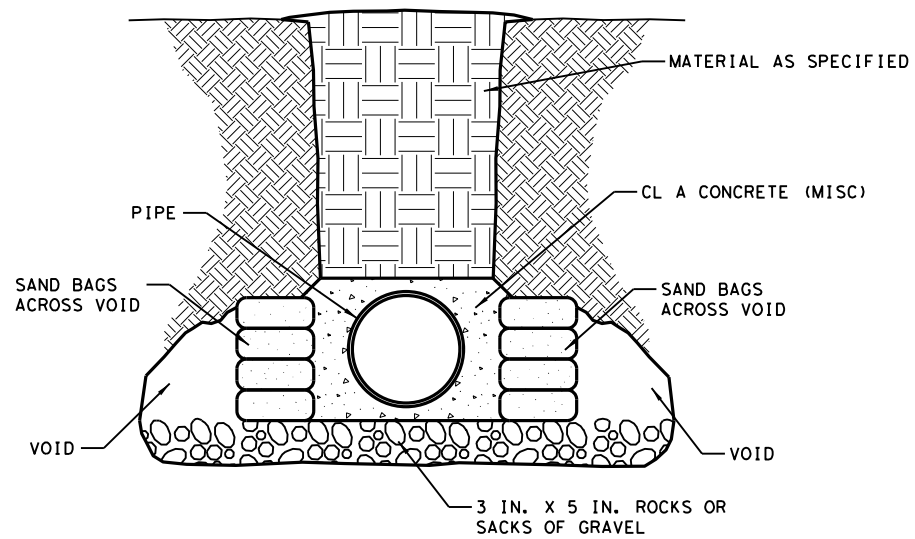
 Texas Department of Transportation		Austin District Standard		
<h2 style="margin: 0;">VOID MITIGATION DETAILS</h2> <h3 style="margin: 0;">VMD-18 (AUS)</h3>				
SHEET 4 OF 7				
©TXDOT 2020	CONT	SECT	JOB	HIGHWAY
	DIST	COUNTY		SHEET NO.

DATE: 9/21/2020 1:01:16 PM FILE: \\txdot\project\wiseon\line.com\TXDOT4\Documents\14 - AUS_Standards\District Design_Standards\Approved\VMD-18 (AUS).dgn



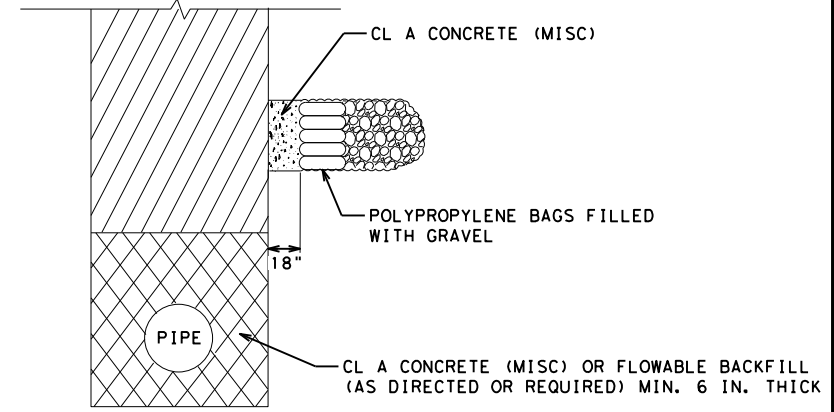
**TRENCHING OPERATIONS
SMALL/MEDIUM (DRY VOID)
(< 64 CF)**

VOID IS EITHER LARGER THAN SIX (6) INCHES IN AT LEAST ONE DIRECTION OR IS LOCATED WITHIN THE LEVEL OF THE PIPE EMBEDMENT. ALL ROCK WITHIN AND SURROUNDING THE VOID IS SOUND.



**TRENCHING OPERATIONS
LARGE (DRY VOID)
(64 CF < 1,000 CF)**

VOID INTERSECTS THE PLANE OF THE TRENCH FLOOR AND ANY OPENING IN TRENCH FLOOR IS GREATER THAN FOUR (4) FEET IN ANY DIRECTION, OR THE TRENCH FLOOR IS UNSTABLE.

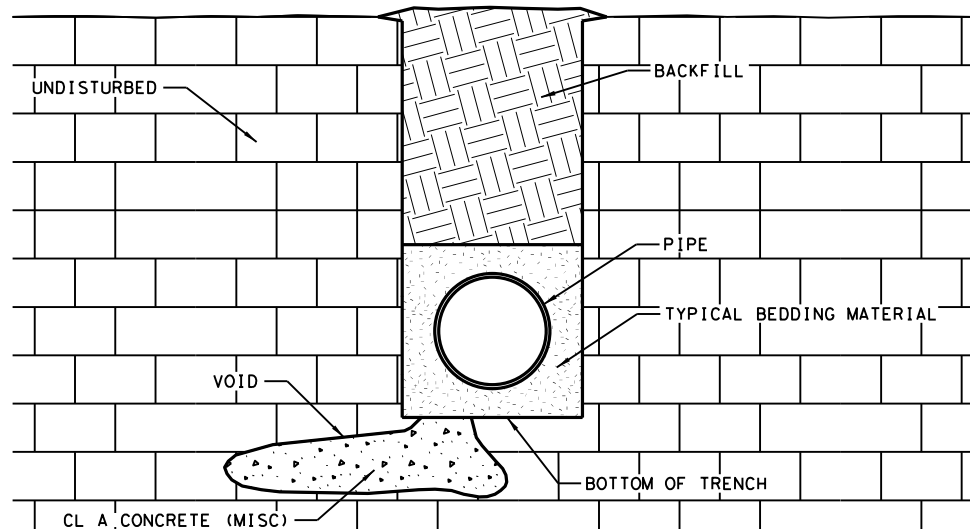


**TRENCHING OPERATIONS
LARGE (DRY VOID)
(64 CF < 1,000 CF)**

VOID IS ABOVE THE PLANE OF THE TRENCH FLOOR

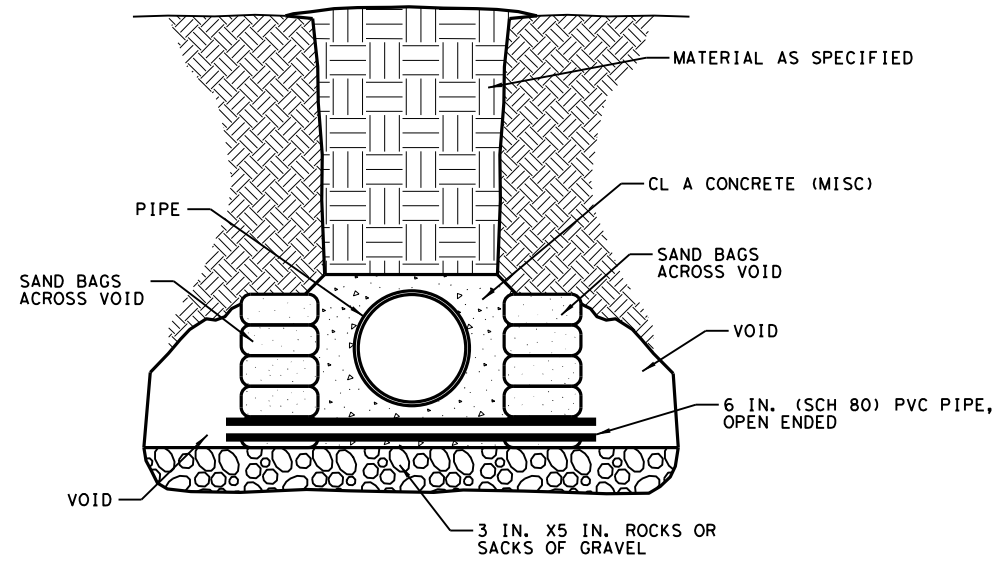
GENERAL NOTE:

1. ALL PIPES SHALL BE ENCASED WITH CLASS A CONCRETE THAT EXTENDS 5' BEYOND THE EDGE OF THE VOID IN ALL DIRECTIONS. THE CONCRETE SHALL PROVIDE 6 IN. COVER AROUND THE PIPE.



**TRENCHING OPERATIONS
SMALL/MEDIUM (DRY VOID)
(< 64 CF)**

VOID INTERSECTS THE PLANE OF THE TRENCH FLOOR AND IS LESS THAN FOUR (4) FEET IN ANY DIRECTION. ALL ROCK WITHIN AND SURROUNDING THE VOID IS SOUND.

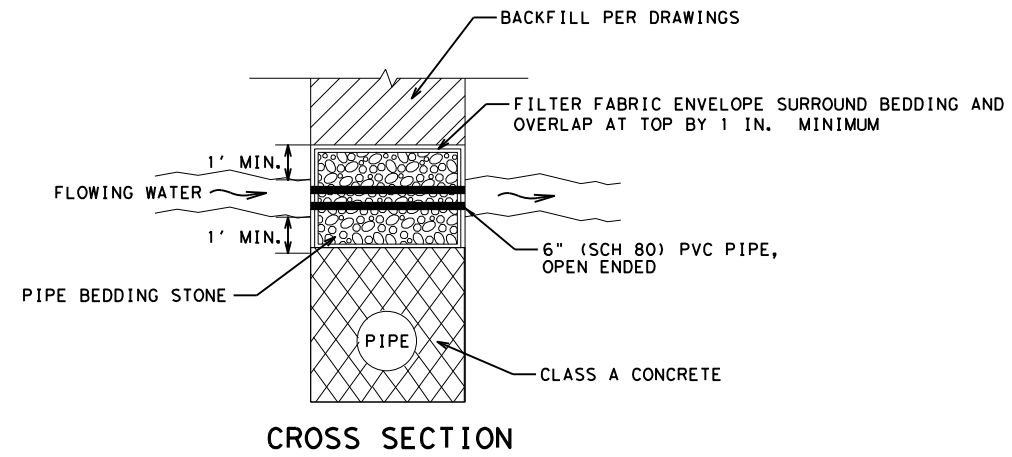


**TRENCHING OPERATIONS
LARGE (WET VOID)
(64 CF < 1,000 CF)**

VOID INTERSECTS THE PLANE OF THE TRENCH FLOOR AND ANY OPENING IN TRENCH FLOOR IS GREATER THAN FOUR (4) FEET IN ANY DIRECTION, OR THE TRENCH FLOOR IS UNSTABLE.

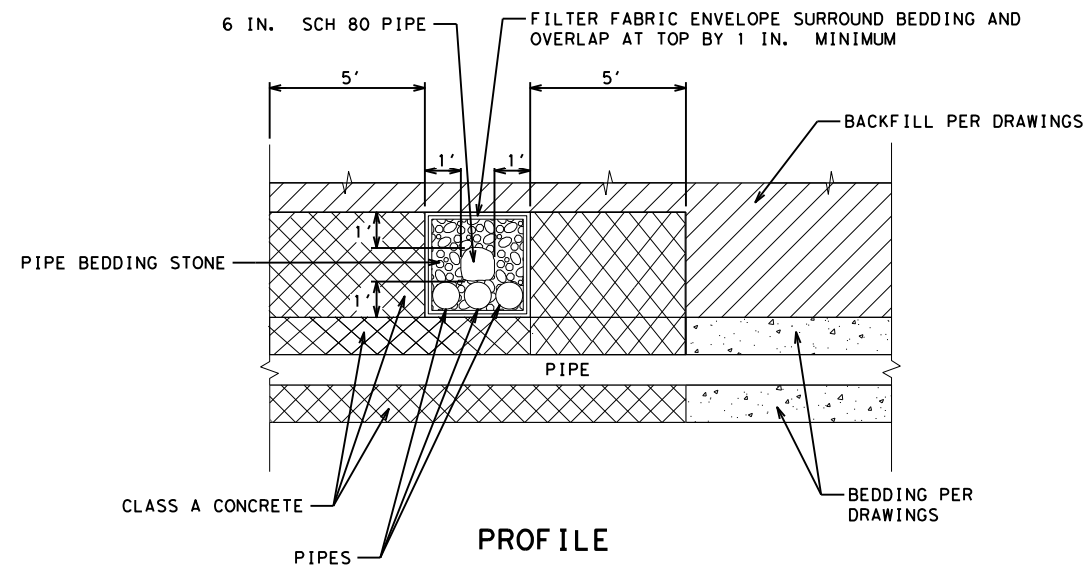
		Austin District Standard	
<h2>VOID MITIGATION DETAILS</h2> <h3>VMD-18 (AUS)</h3>			
SHEET 5 OF 7			
©TXDOT 2020	CONT	SECT	JOB HIGHWAY
	DIST	COUNTY	SHEET NO.

DATE: 9/21/2020 1:01:18 PM
 FILE: \\txdot\projectwiseon\line.com\TXDOT4\Documents\14 - AUS_Standards\District Design_Standards\Approved\VMD-18 (AUS).dgn



GENERAL NOTE:

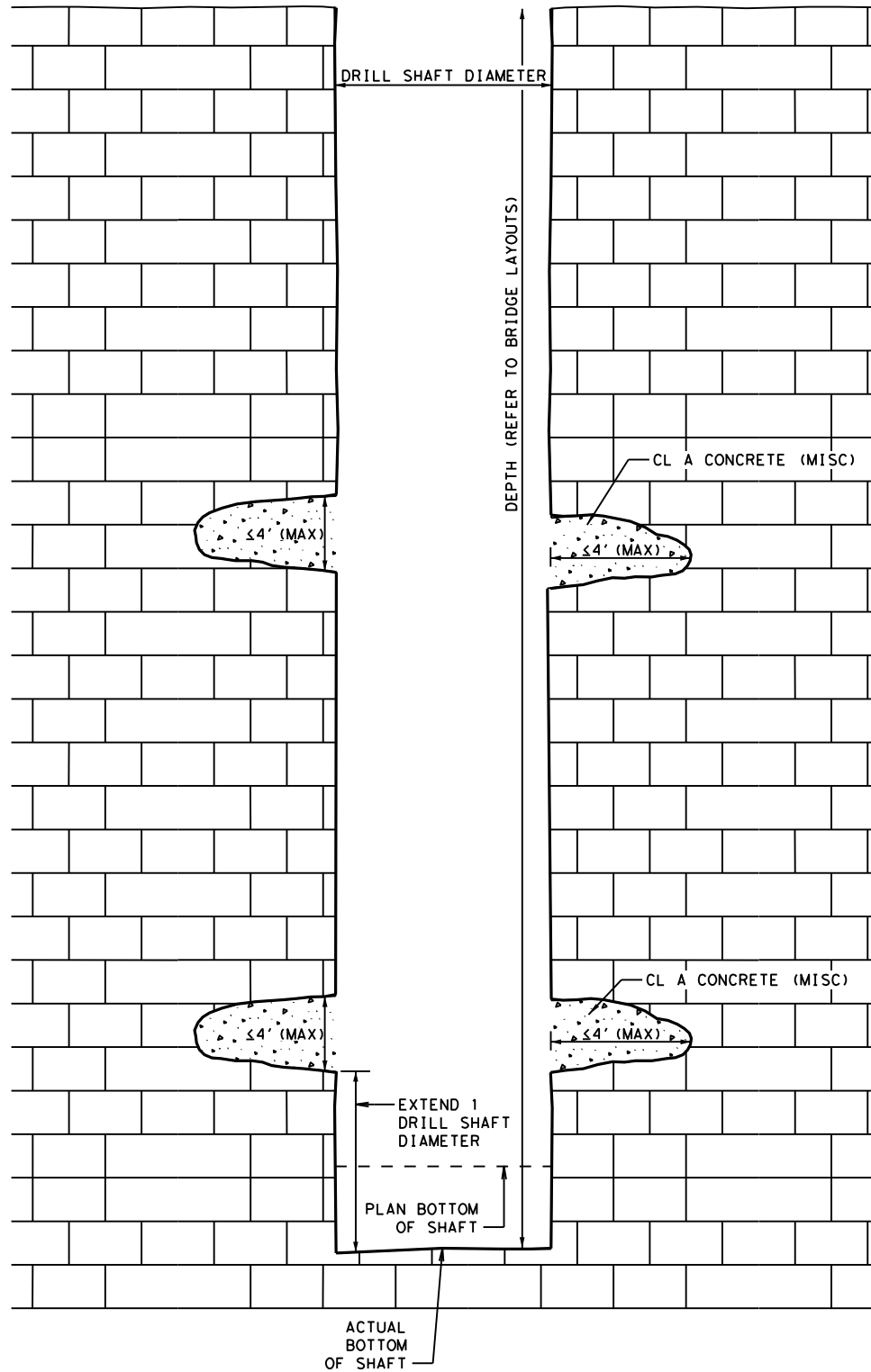
1. ALL PIPES SHALL BE ENCASED WITH CLASS A CONCRETE THAT EXTENDS 5' BEYOND THE EDGE OF THE VOID IN ALL DIRECTIONS. THE CONCRETE SHALL PROVIDE 6 IN. COVER AROUND THE PIPE.



TRENCHING OPERATIONS
 GROUNDWATER ABOVE
 BEDDING MATERIAL

		Austin District Standard	
VOID MITIGATION DETAILS VMD-18 (AUS)			
SHEET 6 OF 7			
©TXDOT 2020	CONT	SECT	JOB HIGHWAY
	DIST	COUNTY	SHEET NO.

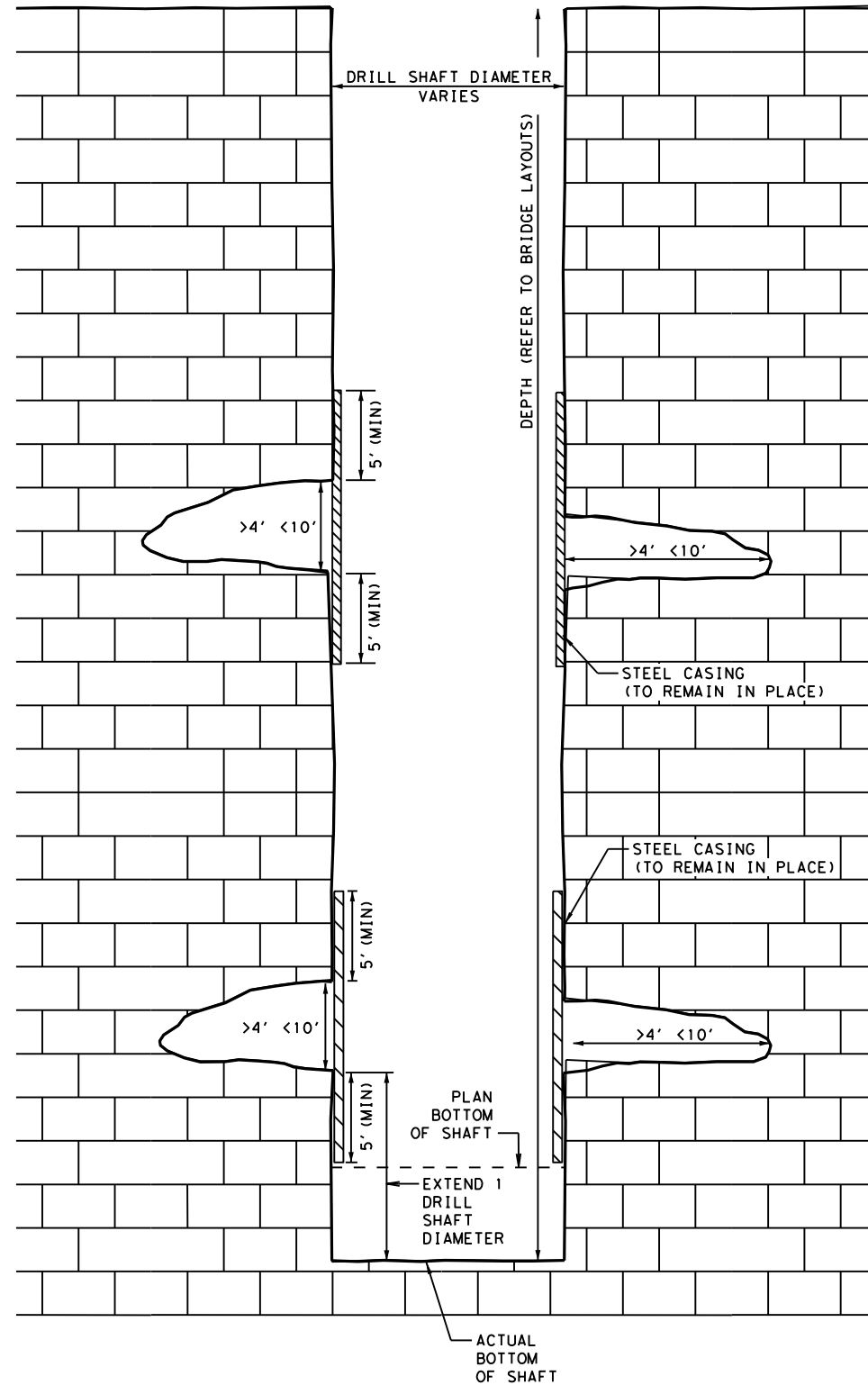
DATE: 9/21/2020 1:01:20 PM
 FILE: \\txdot\projectwiseon1\ine.com\TXDOT4\Documents\14 - AUS_Standards\District Design_Standards\Approved\VMD-18 (AUS).dgn



**DRILL SHAFT OPERATIONS
 SMALL/MEDIUM (DRY VOID)
 (≤4' IN ANY DIRECTION)**

CONCRETE FOR THE VOID SHALL BE PLACED CONTINUOUSLY WITH THE SHAFT

WHERE VOIDS ARE ENCOUNTERED, DRILL SHAFT LENGTHS MAY NEED TO BE INCREASED. APPROVAL FROM THE ENGINEER OF RECORD IS REQUIRED TO COMPLETE CONSTRUCTION OF THE DRILLED SHAFT.



**DRILL SHAFT OPERATIONS
 LARGE (DRY VOID)
 (>4' <10' IN ANY DIRECTION)**

WHERE VOIDS ARE ENCOUNTERED, DRILL SHAFT LENGTHS MAY NEED TO BE INCREASED. APPROVAL FROM THE ENGINEER OF RECORD IS REQUIRED TO COMPLETE CONSTRUCTION OF THE DRILL SHAFT.

NOTES:

1. STEEL CASING WILL BE USED FOR DRILL SHAFT CONSTRUCTION THAT ENCOUNTERS LARGE VOIDS, SO AS TO ALLOW A MINIMUM AMOUNT OF CONCRETE TO ENTER THE VOID.
2. STEEL CASING SHOULD EXTEND A MINIMUM OF FIVE FEET FROM THE EDGE OF THE VOID.
3. AS PART OF THE DRILL SHAFT INSTALLATION PLAN, CONTRACTOR SHALL PROVIDE MEANS AND METHODS FOR ANCHORING THE CASING.
4. REFER TO GENERAL NOTES FOR ADDITIONAL INFORMATION.
5. STEEL CASING MAYBE EXTENDED TO THE TOP OF THE SHAFT. THE ENTIRE LENGTH OF CASING INSTALLED IN A SHAFT WILL BE COMPENSATED IN ACCORDANCE WITH THE VOID MITIGATION NOTES.

**VOID MITIGATION
 DETAILS**

VMD-18 (AUS)

SHEET 7 OF 7

©TxDOT 2020	CONT	SECT	JOB	HIGHWAY
	DIST	COUNTY		SHEET NO.