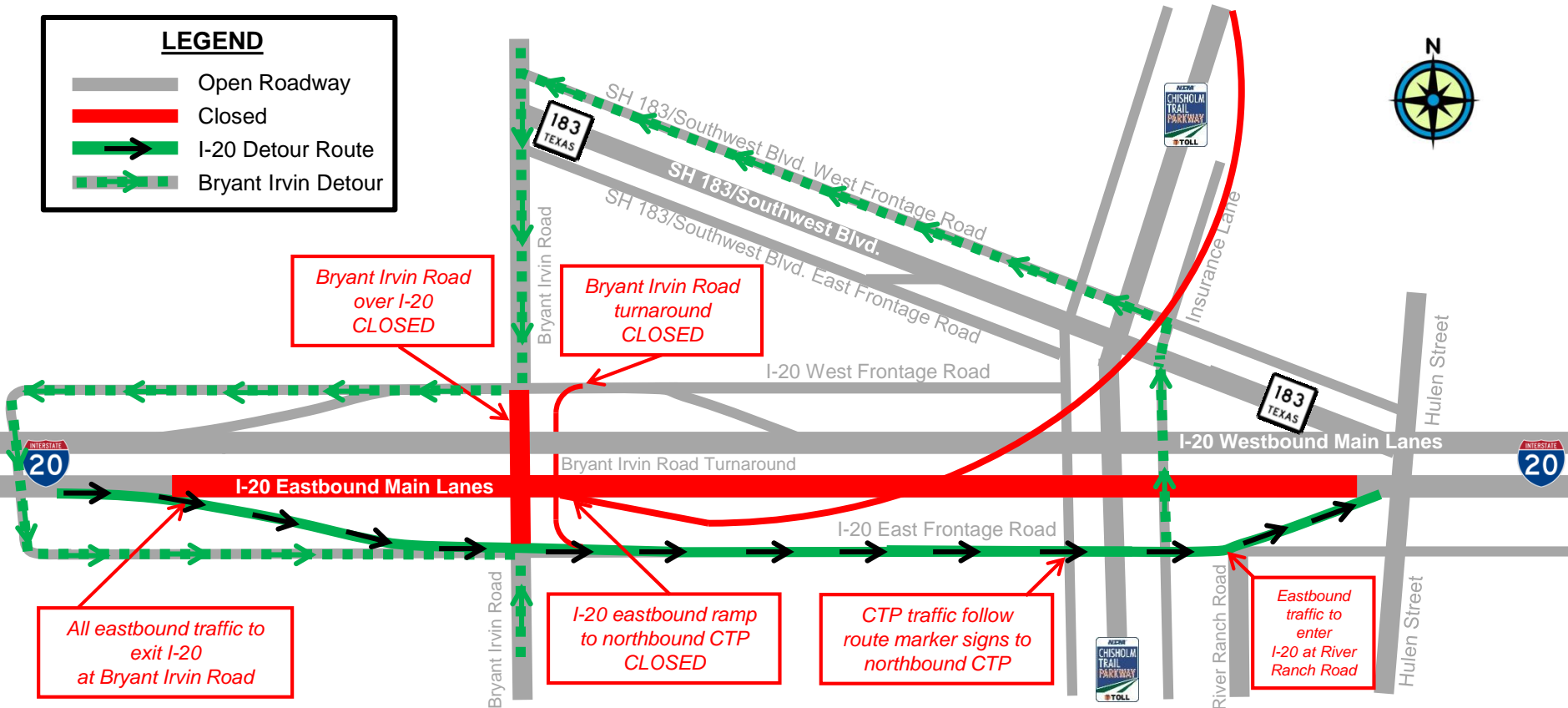


EB I-20/BRYANT IRVIN ROAD CLOSURE DETOUR MAP: FEB. 26 & MAR. 1



WHERE: Eastbound Interstate 20 (I-20) from Bryant Irvin Road to River Ranch Road
 Bryant Irvin Road over I-20
 I-20 eastbound ramp to northbound Chisholm Trail Parkway (CTP)

WHEN: Monday, February 26 and Thursday, March 1: 9 p.m. to 6 a.m. (weather permitting)

WHAT: Eastbound I-20 will be closed overnight on Monday, February 26 and again on Thursday, March 1 for installation of bridge beams and deck panels. Motorists should expect delays and thru traffic can use Interstate 30 as an alternate route. To facilitate the detour of traffic, the Bryant Irvin Road bridge will be closed to thru traffic over I-20. All eastbound I-20 motorists will exit at Bryant Irvin Road and continue on the frontage road and re-enter I-20 at River Ranch Road. Police will be present to facilitate the flow of traffic on the detour routes. The ramp from eastbound I-20 to northbound Chisholm Trail Parkway will be closed and motorists can follow the route marker signs to access the CTP.

