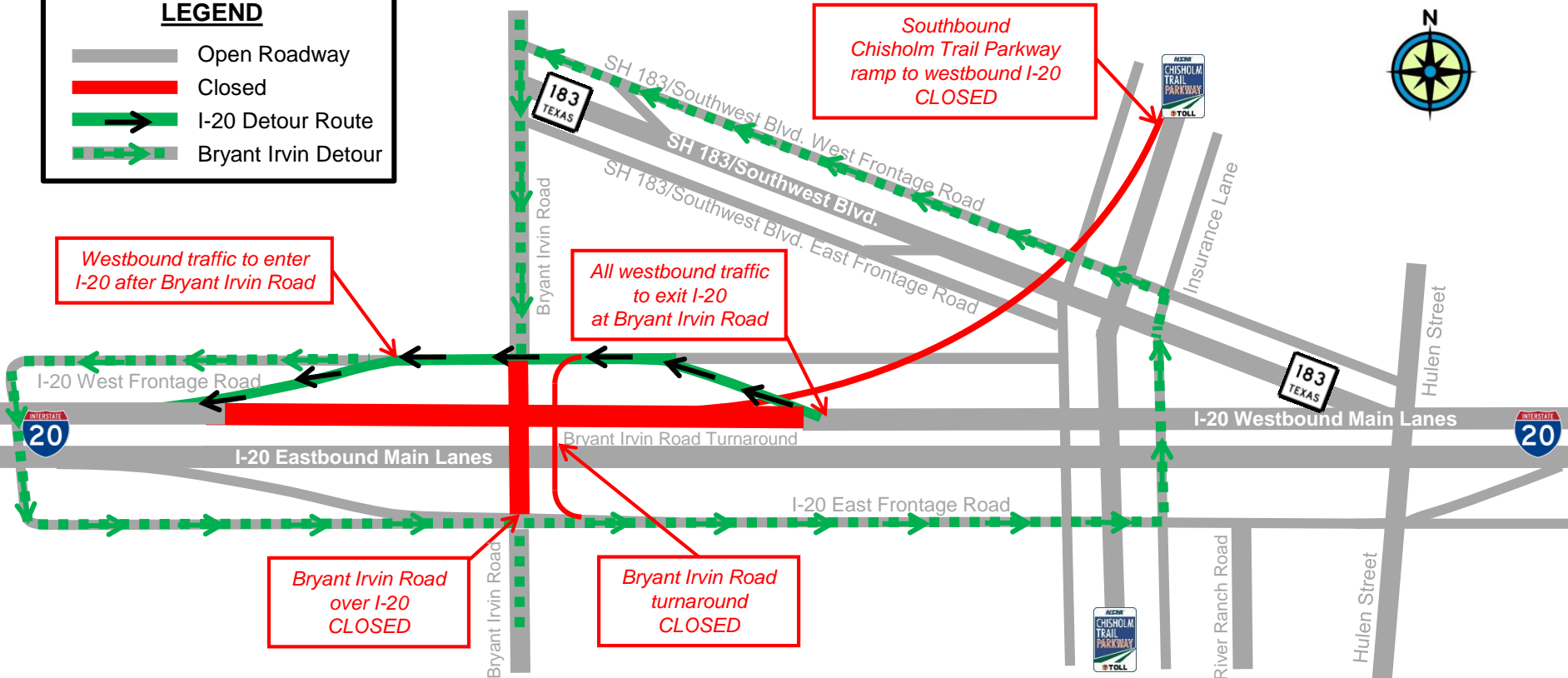


WB I-20/BRYANT IRVIN ROAD CLOSURE AND DETOUR MAP: FEB. 27 - 28

LEGEND

- Open Roadway
- Closed
- I-20 Detour Route
- Bryant Irvin Detour



WHERE: Westbound Interstate 20 (I-20) at Bryant Irvin Road
 Bryant Irvin Road over I-20
 Southbound Chisholm Trail Parkway (CTP) ramp to westbound I-20

WHEN: Tuesday and Wednesday nights, February 27 and 28, 9 p.m. to 6 a.m. (weather permitting)

WHAT: Westbound I-20 will be closed overnight on Tuesday and Wednesday Feb. 27 and 28 for installation of bridge beams and deck panels. Motorists should expect delays and thru traffic can use Interstate 30 as an alternate route. To facilitate the detour of traffic, the Bryant Irvin Road bridge will be closed to thru traffic over I-20. All westbound I-20 motorists will exit at Bryant Irvin Road and continue on the frontage road and re-enter I-20 at the next entrance ramp. Police will be present to facilitate the flow of traffic on the detour routes. The ramp from southbound Chisholm Trail Parkway to westbound I-20 will be closed and motorists can follow the route marker signs to access I-20.

