



# I-27 Feasibility Study from Amarillo to Dumas

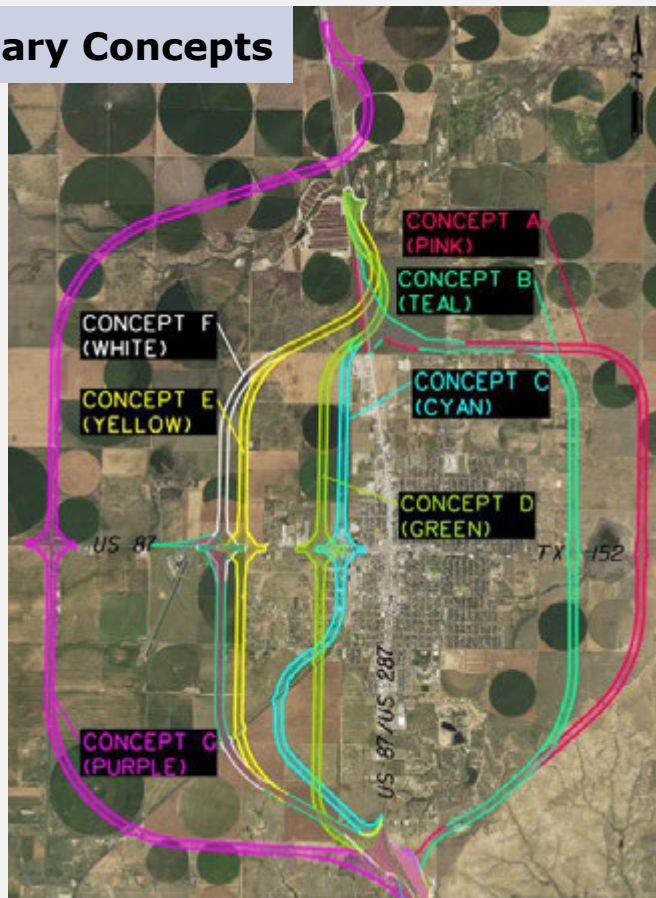
Proposed Concept Packet



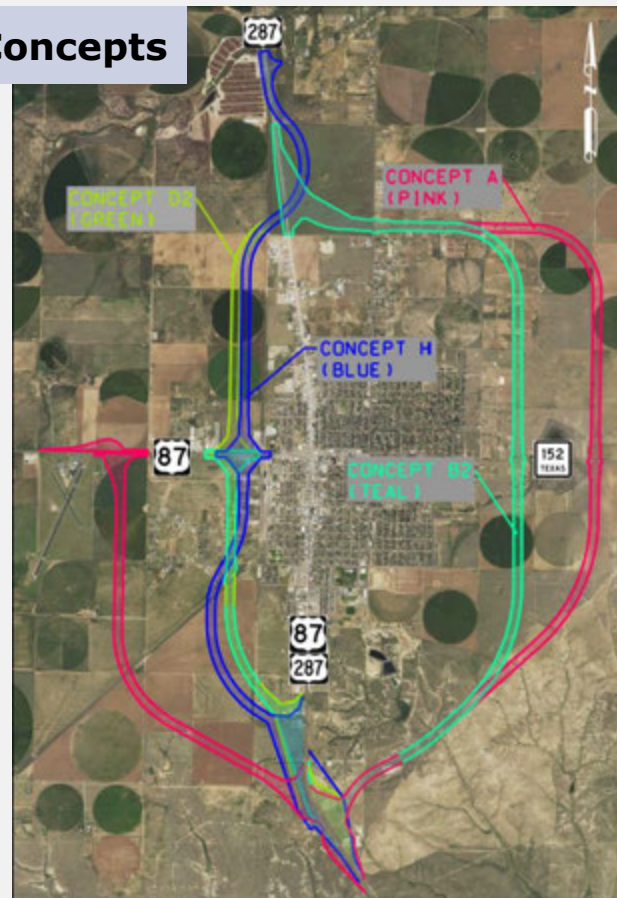
March 6, 2025

# Dumas Concepts

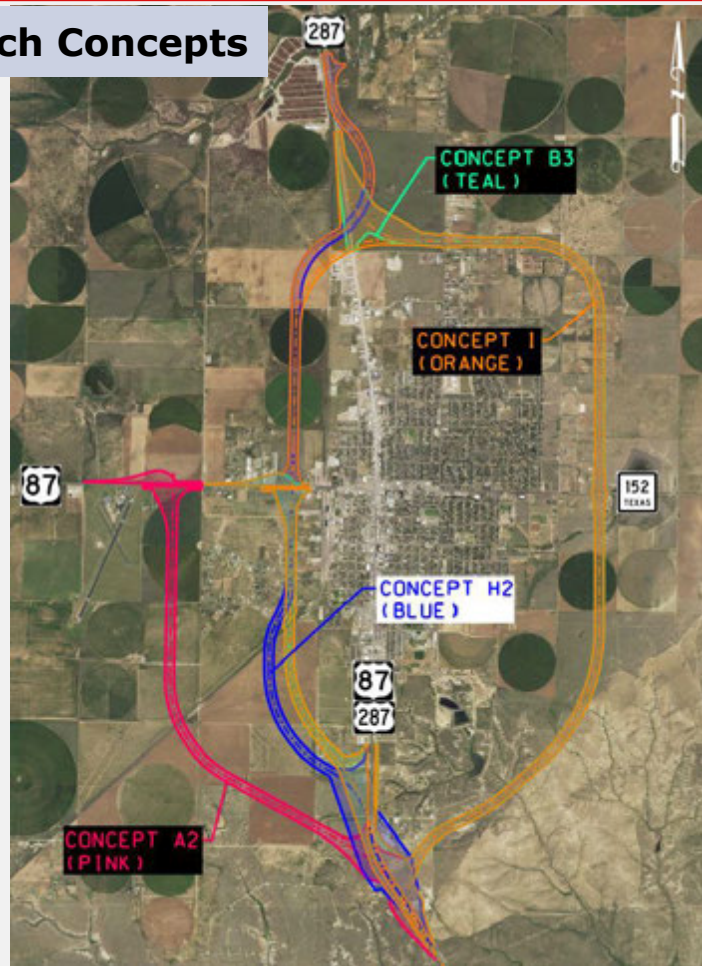
## January Concepts



## February Concepts



## March Concepts



## Concept A2 (Pink) March

- Adjusted the east leg to move closer to Dumas by 0.7 miles

Characteristics	
Length	15 mi (Second longest route; away from the city)
Acreage	828 acres
Interchanges	<ol style="list-style-type: none"> <li>1. North of Dumas at US 287</li> <li>2. N. Maddox Avenue</li> <li>3. East of Dumas at TX 152</li> <li>4. South of Dumas at US 87/287</li> <li>5. FM 762/Railroad</li> <li>6. West of Dumas at US 87</li> </ol>
Property Impacts	<ul style="list-style-type: none"> <li>• Lower impacts to residential and commercial buildings</li> <li>• Minimal property impacts at south and north termini</li> </ul>
Environmental Impacts	<ul style="list-style-type: none"> <li>• Avoids the wetland located at TX 152</li> <li>• Minor impacts to the existing creeks with a proposed bridge at multiple creek crossings</li> <li>• Minimal impact on irrigation wells</li> </ul>



Preliminary Concept for Discussion Purposes Only

# Concept B3 (Teal) March

- West leg shifted east 5,000 ft; closer to Dumas
- Interchange design at US 87 in Dumas, updated from directional to trumpet interchange
- Interchange at US 287 south of Dumas, shifted north 500-900 ft

Characteristics	
Length	13.6 mi (third longest route; closer to the city and away from Airport)
Acreage	795 acres
Interchanges	<ol style="list-style-type: none"> <li>1. North of Dumas at US 287</li> <li>2. N. Maddox Avenue</li> <li>3. East of Dumas at TX 152</li> <li>4. South of Dumas at US 87/287</li> <li>5. FM 762/Railroad</li> <li>6. West of Dumas at US 87</li> </ol>
Property Impacts	<ul style="list-style-type: none"> <li>• Higher impacts on residential parcels and buildings</li> <li>• Minimal property impacts at south and north termini</li> </ul>
Environmental Impacts	<ul style="list-style-type: none"> <li>• Avoids wetland located at TX 152</li> <li>• Minimizes major impacts to the existing creeks</li> <li>• Minimal impact on irrigation wells</li> </ul>



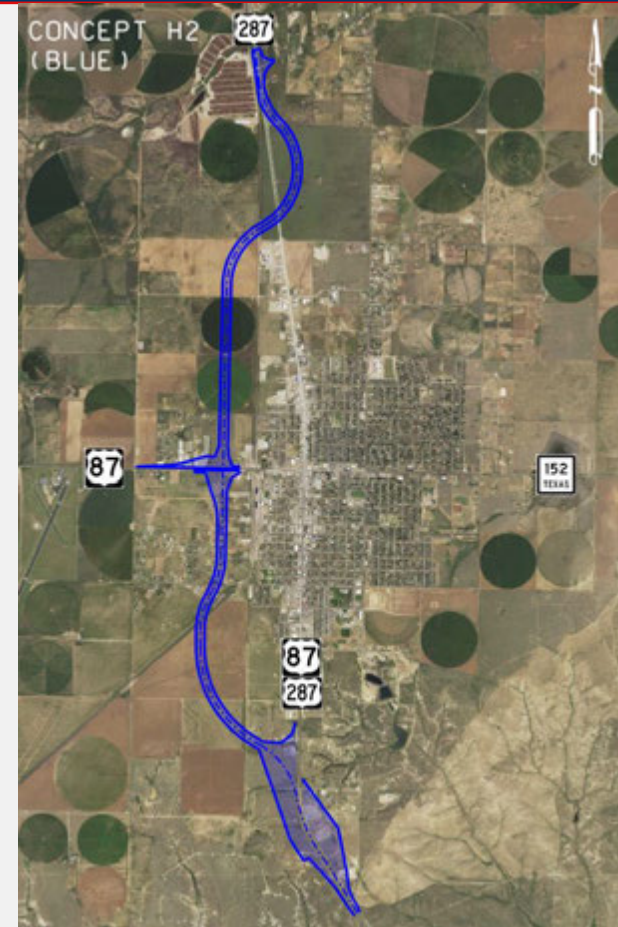
Preliminary Concept for Discussion Purposes Only

## Concept H2 (Blue) March

- New Concept developed by TxDOT, study team, & SWG
- Proposed minimum radii curves to avoid the cemetery
- Interchange design at US 87 in Dumas, updated from directional to trumpet interchange

### Characteristics

Length	8.3 mi (Shortest route with short curves closer to the city)
Acreage	565 acres
Interchanges	<ol style="list-style-type: none"> <li>1. North of Dumas at US 287</li> <li>2. Railroad crossing (north)</li> <li>3. West of Dumas at US 87</li> <li>4. FM 762/Railroad</li> <li>5. South of Dumas at US 87/287</li> </ol>
Property Impacts	<ul style="list-style-type: none"> <li>• Parallel to the railroad and closer to the city/downtown</li> <li>• Higher impact on commercial parcels and buildings</li> <li>• Avoids impacts to the cemetery</li> <li>• Avoids Dumas feed yard</li> </ul>
Environmental Impacts	<ul style="list-style-type: none"> <li>• Avoids creeks</li> <li>• Avoids Texhoma Park</li> <li>• Minimal impact on irrigation wells and irrigated parcels</li> </ul>



# Concept I (Orange) March

- New Concept developed by TxDOT & study team
- Loop around Dumas
- Most of the alignment is the same as Concept B3 (Teal) and NW leg is the same as Concept H2 (Blue)

## Characteristics

Length	18 mi (Longest route; loop around & closest to the city)
Acreage	1011 acres
Interchanges	<ol style="list-style-type: none"> <li>1. North of Dumas at US 287 (includes East &amp; West)</li> <li>2. N. Maddox Avenue</li> <li>3. East of Dumas at TX 152</li> <li>4. South of Dumas at US 87/287</li> <li>5. FM 762/Railroad</li> <li>6. West of Dumas at US 87</li> </ol>
Property Impacts	<ul style="list-style-type: none"> <li>• Parallel to the railroad and closer to the city/down</li> <li>• Avoids impacts to the cemetery</li> <li>• Avoids Dumas feed yard</li> </ul>
Environmental Impacts	<ul style="list-style-type: none"> <li>• Avoids wetland located at TX 152</li> <li>• Minimizes major impacts to the existing creeks</li> <li>• Avoids Texhoma Park</li> <li>• Minimal impact on irrigation wells</li> </ul>



Preliminary Concept for Discussion Purposes Only

# DRAFT Dumas Concept Evaluation Matrix March

Screening Goals	Evaluation Criteria	CONCEPT A2 (PINK)	CONCEPT B3 (TEAL)	CONCEPT H2 (BLUE)	CONCEPT I (ORANGE)
<b>Alignment Limits</b>	Length (mi)	15 -	13.6 0	8.3 ++	18 --
	Acreage	828 0	795 0	565 ++	1011 --
<b>Proposed ROW</b>	# of Parcels	96 ++	163 -	108 +	178 --
	# Residential Parcels	40 +	58 -	26 ++	63 --
	# Residential Buildings	13 0	14 0	10 ++	18 --
	# Commercial Parcels	11 ++	24 0	24 0	31 --
	# Commercial Buildings	1 ++	10 -	2 --	11 -
	Acreage of irrigated parcels	189 --	33 ++	56 +	90 0
	Transmission lines	4 --	4 --	1 ++	1 ++
	Railroad	1 ++	1 ++	3 --	2 -
<b>Environmental Constraints</b>	Section 4(f) - parks	0 ++	0 ++	0 ++	0 ++
	Cemeteries	0 ++	0 ++	0 ++	0 ++
	Historic sites	0 ++	0 ++	0 ++	0 ++
	Compatibility	Yes ++	Yes ++	Yes ++	Yes ++
<b>Construction Cost (\$ millions) Estimate</b>	TxDOT 2024 Unit Prices	\$\$\$ 0	\$\$\$ 0	\$ ++	\$\$\$\$\$ --
	Moore County Appraisal District Prices	\$ +	\$\$\$\$\$ --	\$\$\$\$\$ --	\$\$\$\$\$ --
<b>Stakeholder Input</b>	Stakeholder's issues and concerns	Carry Forward	Carry Forward	Carry Forward	Carry Forward

Preliminary Matrix for Discussion Purposes Only

# US 87 / 287 Concepts

## Proposed Interchange Locations

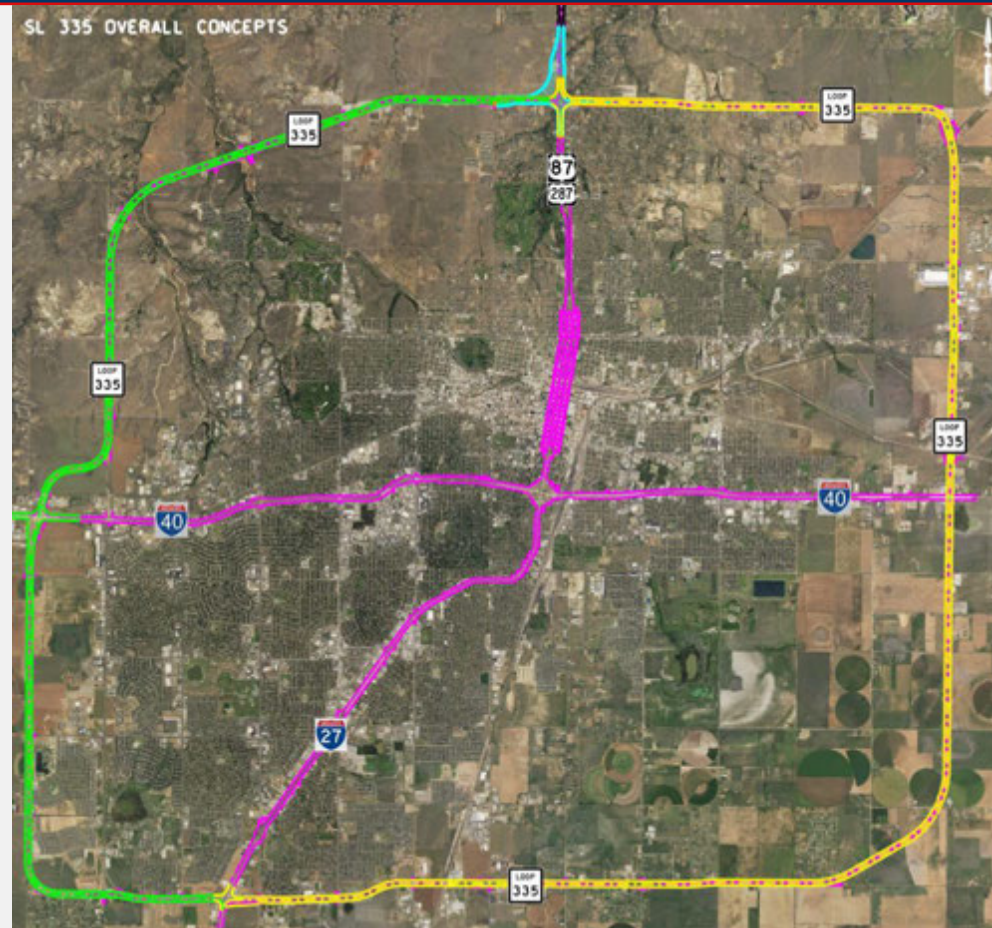
- Nine proposed interchange locations identified along US 87/US 287
- These locations would allow for access when US 87/US 287 is upgraded to interstate standards
- Meetings with affected property owners held on 3/5/2025



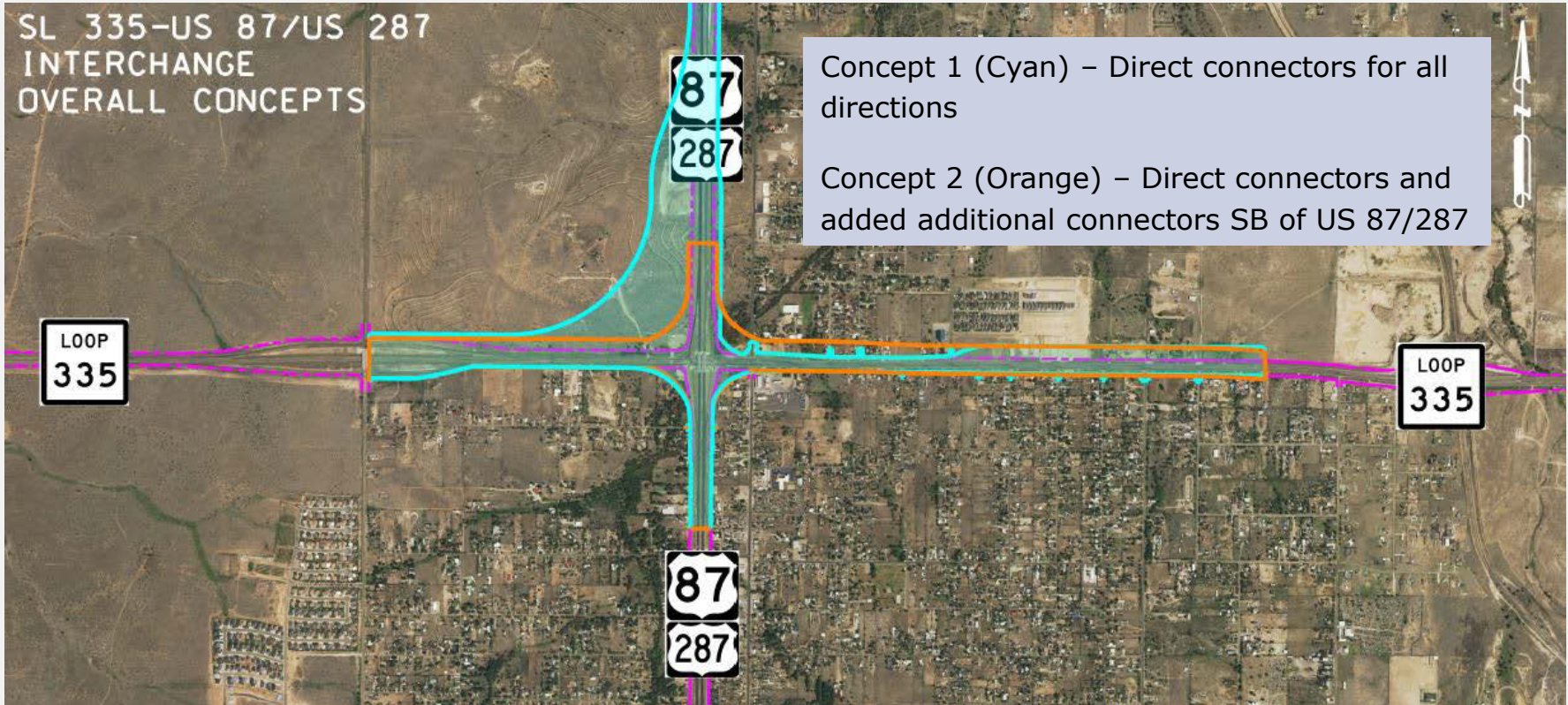
# SL 335 Concepts

## SL 335 February Concepts

- Two concepts: east (yellow) and west (green)
- Two proposed connection concepts for the proposed interchange at SL 335 and US 87/US 287

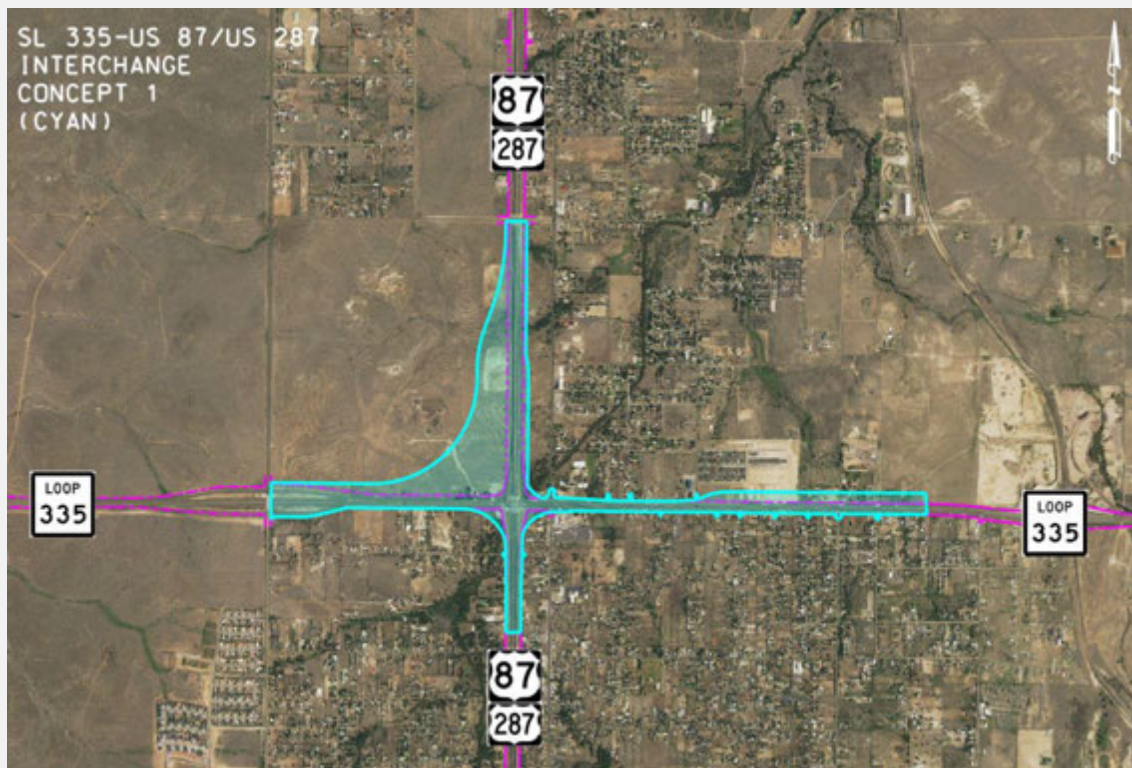


# SL 335 February Concepts



## SL 335 Concept 1 (Cyan) February

- Directional interchange (stack) at SL 335 and US 87/US 287
- Includes direct connectors for all directions
- Avoids impacts to existing properties at the NE corner
- Traverses vacant parcels in the NW quadrant of the interchange to minimize property impacts

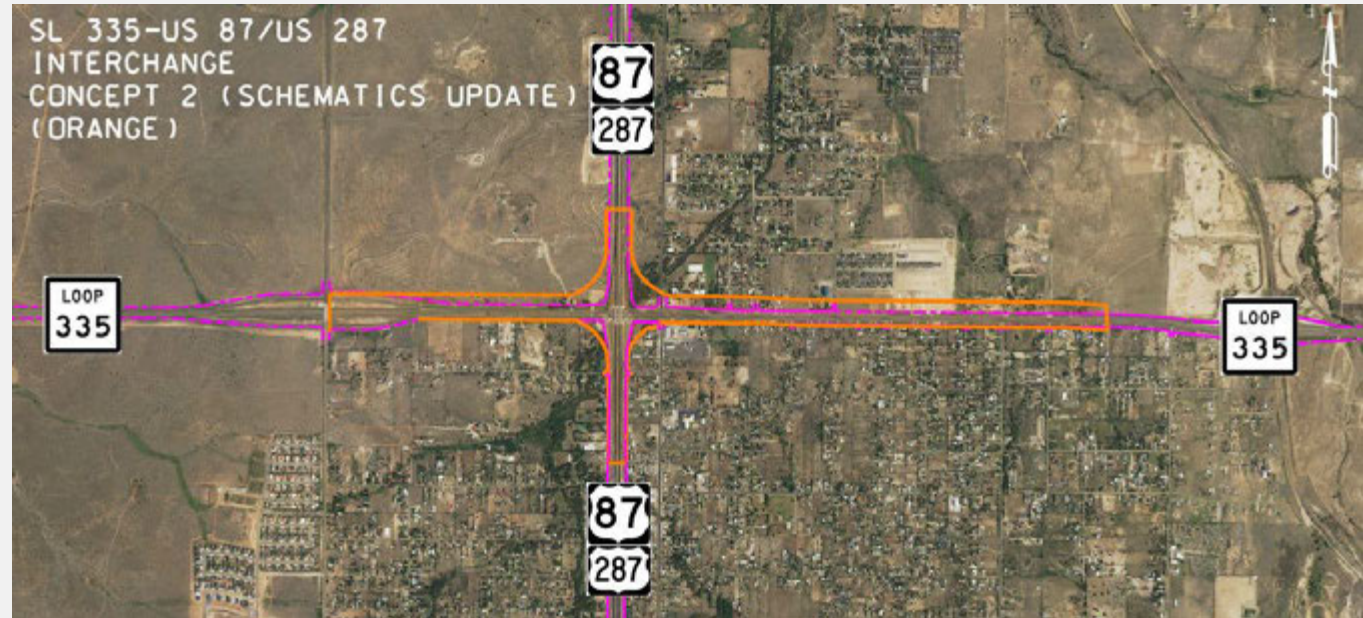


ROW Footprint for Connection A from 1/23/2025

Preliminary Concept for Discussion Purposes Only

## SL 335 Concept 2 (Orange) February

- Revision to the existing schematics for the SL 335 at the US 87/US 287 interchange
- Revisions include direct connectors from SL 335 WB to US 87/US 287 SB and SL 335 EB to US 87/US 287 SB



ROW Footprint for schematics at the intersection of SL 335 at US 87/US 287 from 1/23/2025