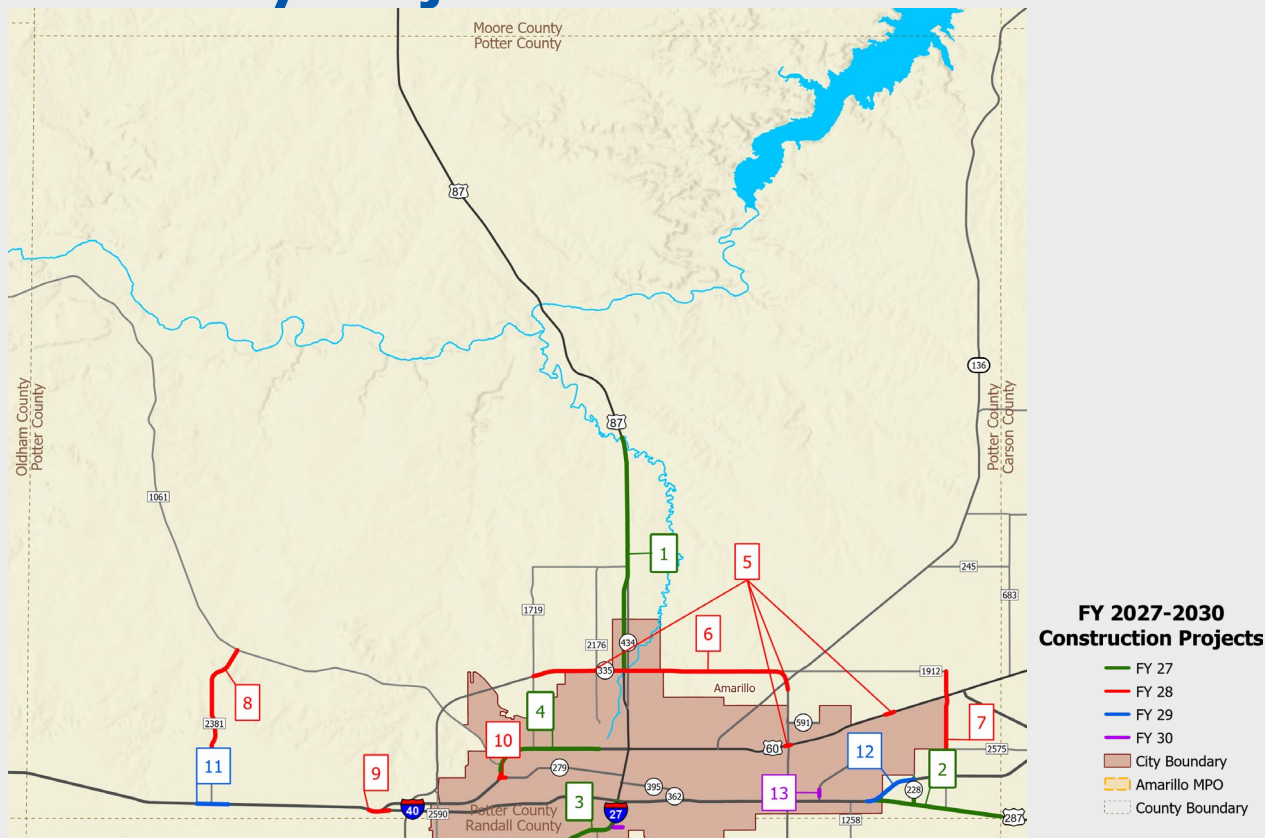


# Rural TIP Potter County Projects



2027 – 2030 Rural TIP

## Rural TIP Potter County Projects

Map ID	CSJ #	Highway	Limits from	Limits to	Project Description	Total Project Cost	TIP Year
1	0041-07-121 0041-07-123	US 87	Amarillo Creek 0.815 Mi North of SL 335	SL 335 SL 335	Rehab	\$14,950,000	2027
2	0042-01-032 0275-01-258 0042-10-004 0042-01-033	US 287 IH 40 SP 228 US 287	US 287 at SP 228 I 40 at SP 228 I 40 I 40	. . US 287 Armstrong Co Line	Intersection Improvements Preventive Maintenance Rehab Median Barrier	\$6,400,000	2027
3	0168-10-083 0168-10-084	I 27	Randall Co Line 0.2 Mi South of Tyler	I 40 Interchange 0.3 Mi South of Tyler	Landscape Improvements Bridge Column Protection	\$400,000	2027
4	0090-06-049 0090-06-053	BI 40-D	SL 279 (SW 9 <sup>th</sup> Ave)	N Hughes St	Pedestrian Improvements Preventive Maintenance	\$34,200,000	2027

## Rural TIP Potter County Projects (Continued)

Map ID	CSJ #	Highway	Limits from	Limits to	Project Description	Total Project Cost	TIP Year
5	0169-02-071 0169-02-072 0379-03-032 0379-03-033 2635-04-046	US 60 US 60 EB SL 335 NB SL 335 SB FM 2176	At SL 335 At Ave B At SH 136 At SH 136 At SL 335	.	Bridge Maintenance	\$7,610,000	2028
6	2635-01-044 2635-04-043	SL 335	US 87 FM 1719	0.4 M South SH 136 US 87	Preventive Maintenance	\$15,500,000	2028
7	1821-01-024	FM 1912	St Francis Ave	I 40	Preventive Maintenance	\$4,000,000	2028
8	2494-01-018	RM 2381	200' South of RM 1061	0.25 Mi North Bushland	Safety Treat Fixed Objects	\$1,176,500	2028
9	0275-01-261 0275-01-262	IH 40 WB IH 40 EB	At BI 40-D At BI 40-D	.	Bridge Maintenance	\$1,600,000	2028

## Rural TIP Potter County Projects (Continued #2)

Map ID	CSJ #	Highway	Limits from	Limits to	Project Description	Total Project Cost	TIP Year
10	0090-05-118 0090-06-052	Bell St	At SL 279 At BI 40-D	.	Bridge Maintenance	\$2,400,000	2028
11	0090-05-119	I 40 EB	At RM 2381	.	Bridge Rehab	\$720,000	2029
12	0275-01-265	I 40	US 287	SP 228	Install Illumination	\$2,235,800	2029
13	3251-01-010	SS 468	At BNSF Railroad / 3 <sup>rd</sup> Ave	.	Rehab Existing Bridge	\$6,700,000	2030